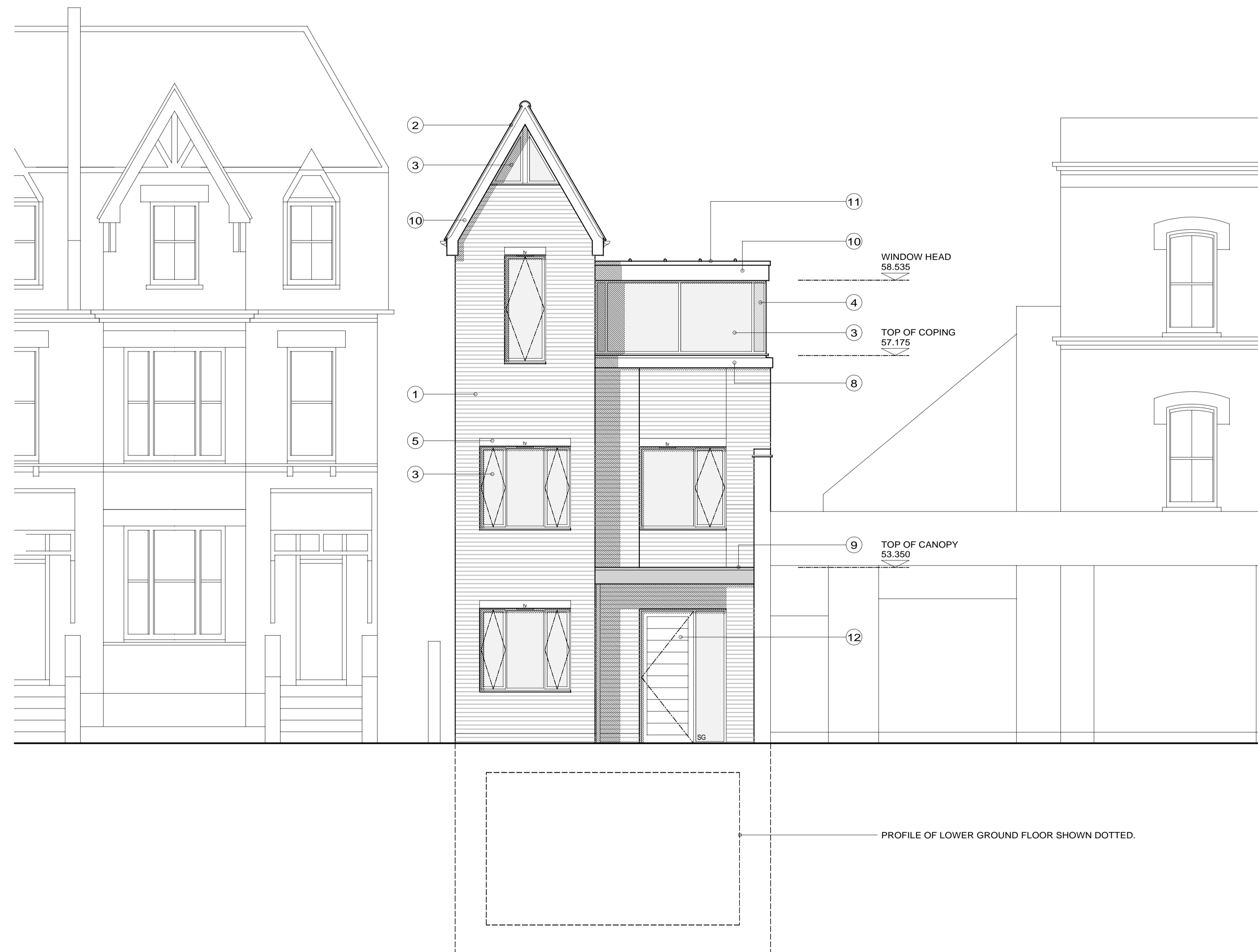


RIDGE	61.750
GLAZING SILL	60.250
WINDOW HEAD	58.985
WINDOW SILL	57.025
SECOND FLOOR FFL	56.122
WINDOW HEAD	55.535
WINDOW SILL	54.025
FIRST FLOOR FFL	53.137
WINDOW HEAD	52.610
WINDOW SILL	51.100
GROUND FLOOR FFL	50.175
LOWER GRD FLOOR FFL	46.910



EXTERNAL MATERIAL KEY

①	FACING BRICKWORK
②	NATURAL SLATE PITCHED ROOF COVERING
③	DOUBLE GLAZED WINDOWS WITH DARK GREY ALUMINIUM THERMALLY BROKEN FRAMES
④	OPAQUE GLASS SPANDREL PANEL
⑤	RECON STONE LINTOL
⑧	RECON STONE SILL/COPING
⑨	POLISHED STAINLESS STEEL CANOPY
⑩	WHITE PAINTED TIMBER FASCIA/BARGEBOARD
⑪	CODE 5 LEAD FLAT ROOF COVERING
⑫	HARDWOOD ENTRANCE DOOR

SG INDICATES SAFETY GLASS TO BS 6206
tv INDICATES ADJUSTABLE TRICKLE VENT TO WINDOW HEAD

proposed front elevation