

DO NOT SCALE THIS DRAWING

Contractors are to check all dimensions prior to commencement on site and notify the architect of any errors, omissions, or discrepancies.

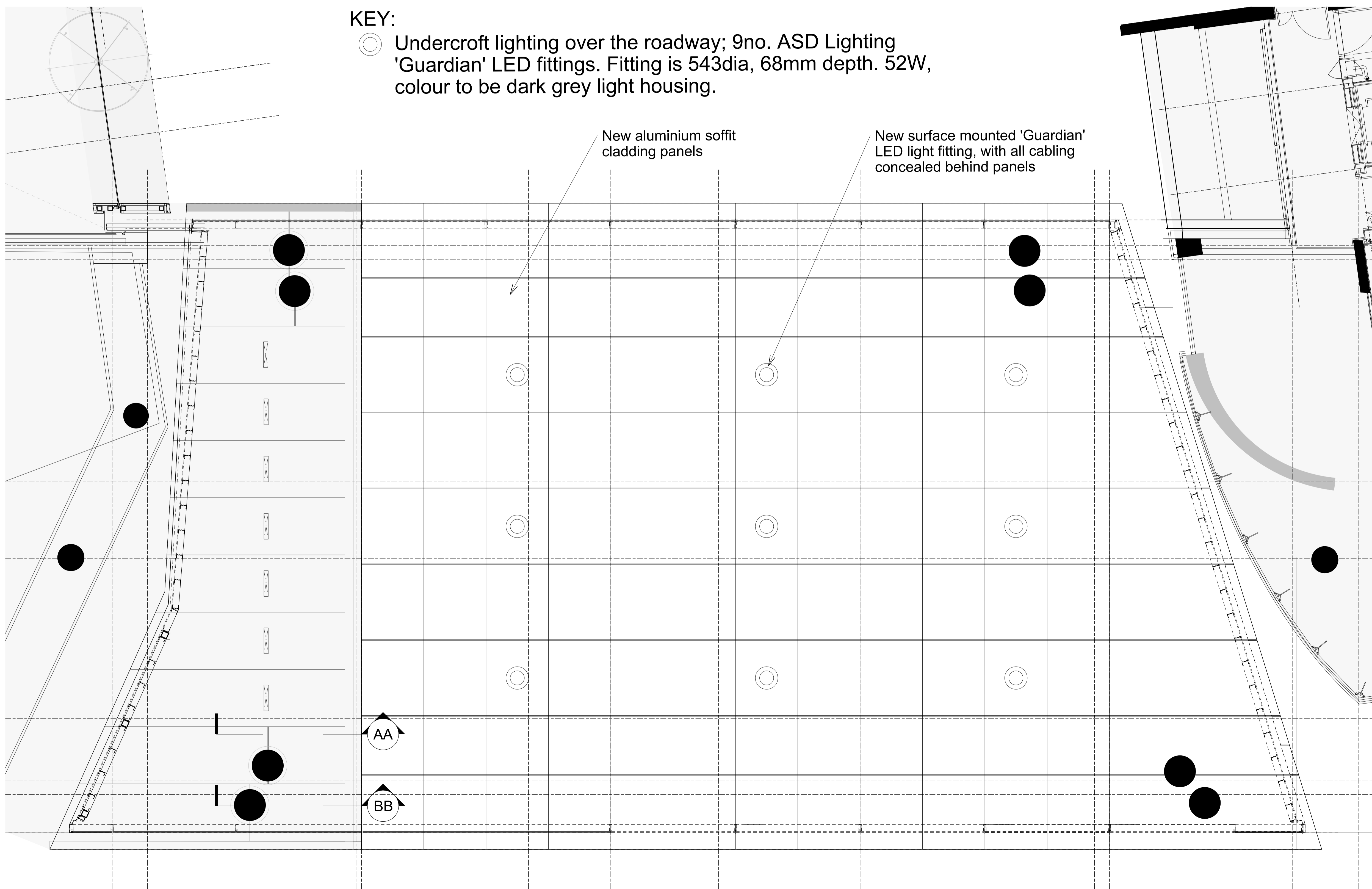
TateHindle Limited retain copyright of this drawing. It may not be copied, altered or reproduced in any way without their written authority.

KEY:

- Undercroft lighting over the roadway; 9no. ASD Lighting 'Guardian' LED fittings. Fitting is 543dia, 68mm depth. 52W, colour to be dark grey light housing.

New aluminium soffit cladding panels

New surface mounted 'Guardian' LED light fitting, with all cabling concealed behind panels



AS PROPOSED
Application ref: 2013/5507/P

Rev	Description	Date	Checked
00	ISSUED FOR PLANNING	18-08-14	SB

Status
FOR PLANNING

Client
UBS CLOVA

Project
110 HIGH HOLBORN

Drawing
PROPOSED CANOPY REFLECTIVE CEILING PLAN

Scale	Drawn	Date	Checked
1:50@A1	MB	13-08-14	SB

Project no.	Dwg	Revision
12550	A(35)021-MMA	00

tatehindle

TateHindle Limited
1 Lindsey Street
Smithfield
London EC1A 9HP
T 020 7332 4850
mail@tatehindle.co.uk
www.tatehindle.co.uk