



Zen Developments

4 St Augustine's Road, London NW1 9RN

Condition 6 –Cycle Storage Proposal

Rev A

CZWG Architects LLP

17 Bowling Green Lane LONDON EC1R 0QB

T 020 7253 2523

F 020 7250 0594

www.czwg.com

Contents

1. Introduction	4
2. The Proposal.....	5
Appendix A: Cycle Store Drawings	6
1913-00-DR-0102_P05 Upper Ground Floor	6
1913-00-DR-0603_P05 Elevation CC	6
1913-00-DR-0604_P05 Elevation DD	6
Appendix B: Semi-vertical Cycle Rack Datasheet	7

1. Introduction

This document has been prepared by CZWG for the proposed development of 4 St Augustine's Road, London which was granted planning permission subject to discharge of conditions. (Ref: APP/X5210/A/13/2204277) This *Cycle Storage Proposal* has been produced to specifically discharge planning condition 6 for this project:

Before the development commences, details of a secure and covered cycle storage area for 18 cycles shall be submitted to and approved in writing by the local planning authority. The approved facility shall thereafter be provided in its entirety prior to the first occupation of any of the units hereby permitted and thereafter permanently retained.

The proposed development is located at the junction of St Augustine's Road, Agar Grove and Murray Street, which is within the Camden Square Conservations Area. It will be a five storey building comprising 9 residential units (4x2 bedroom and 5x3 bedroom flats). The building will have a single pedestrian entrance at the north east corner levelling with the existing pavement.

2. The Proposal

The cycle store is located at the south east corner of the site. It can accommodate 18 bikes with the semi-vertical system.

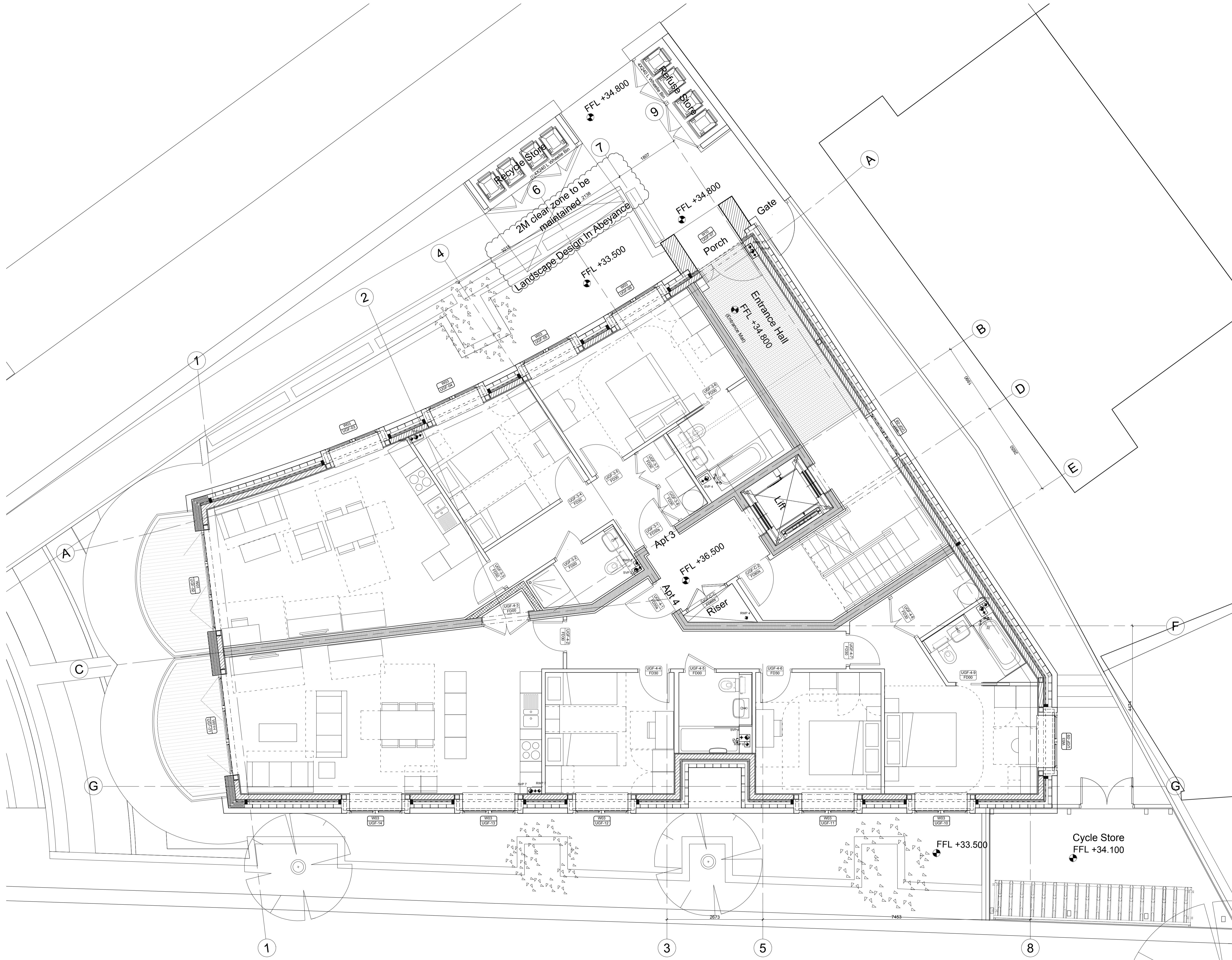
The store will be fully enclosed by the existing boundary wall (approximately 1.8m high from the outside pavement) at south and timber fencing on the other sides. It will be covered by a profiled sheet steel roof (galvanized finish) which is supported by the timber structures on steel footing. Both the roof and new fencing will be no higher than the existing boundary wall hence are not visible from the street. The residents can gain access through the secured gate and store doors from the path along the east side of the building.

Appendix A: Cycle Store Drawings

1913-00-DR-0102_P06 Upper Ground Floor

1913-00-DR-0603_P06 Elevation CC

1913-00-DR-0604_P06 Elevation DD



Rev: P06	Date: 25.06.14	Drn: SH	Chk: AW
Issue to discharge Planning Condition 6			
Rev: P05	Date: 22.05.14	Drn: SH	Chk: AW
Issue to discharge Planning Condition 6			
Rev: P04	Date: 08.10.13	Drn: EF	Chk: PG
Minor Graphic amendments			
Rev: P03	Date: 12.09.13	Drn: EF	Chk: PG
Planning (2nd Application)			
Rev: P02	Date: 01.05.13	Drn: CLA	Chk: PG
Conservation officer CAAC comments incorporated			
Rev: P01	Date: 26.02.13	Drn: CLA	Chk: PG
Initial Issue.			

Do not scale off this drawing
 Report all errors and omissions to the Architect
 Dimensions to be checked on site

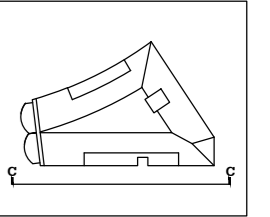
SHEET INFORMATION:
 Plotted by : S.H.E
 Plot date : 25 June 2014 17:33:08

Client:
 Zen Developments

Project:
 4 St Augustines Road

Title:
 GA Plan
 Upper Ground Floor

Drawing status:
 Discharge Condition



Rev: P06	Date: 25.06.14	Drn: SH	Chk: AW
Issue to discharge Condition 6			
Rev: P05	Date: 22.05.14	Drn: SH	Chk: AW
Issue to discharge Condition 6			
Rev: P04	Date: 08.10.13	Drn: EF	Chk: PG
Minor Graphic amendments			
Rev: P03	Date: 12.09.13	Drn: EF	Chk: LB
Planning (2nd Application)			
Rev: P02	Date: 01.05.13	Drn: CLA	Chk: LB
Conservation officer/ CAAC comments incorporated.			
Rev: P01	Date: 26.02.13	Drn: CLA	Chk: LB
Initial Issue.			

Do not scale off this drawing
Report all errors and omissions to the Architect
Dimensions to be checked on site

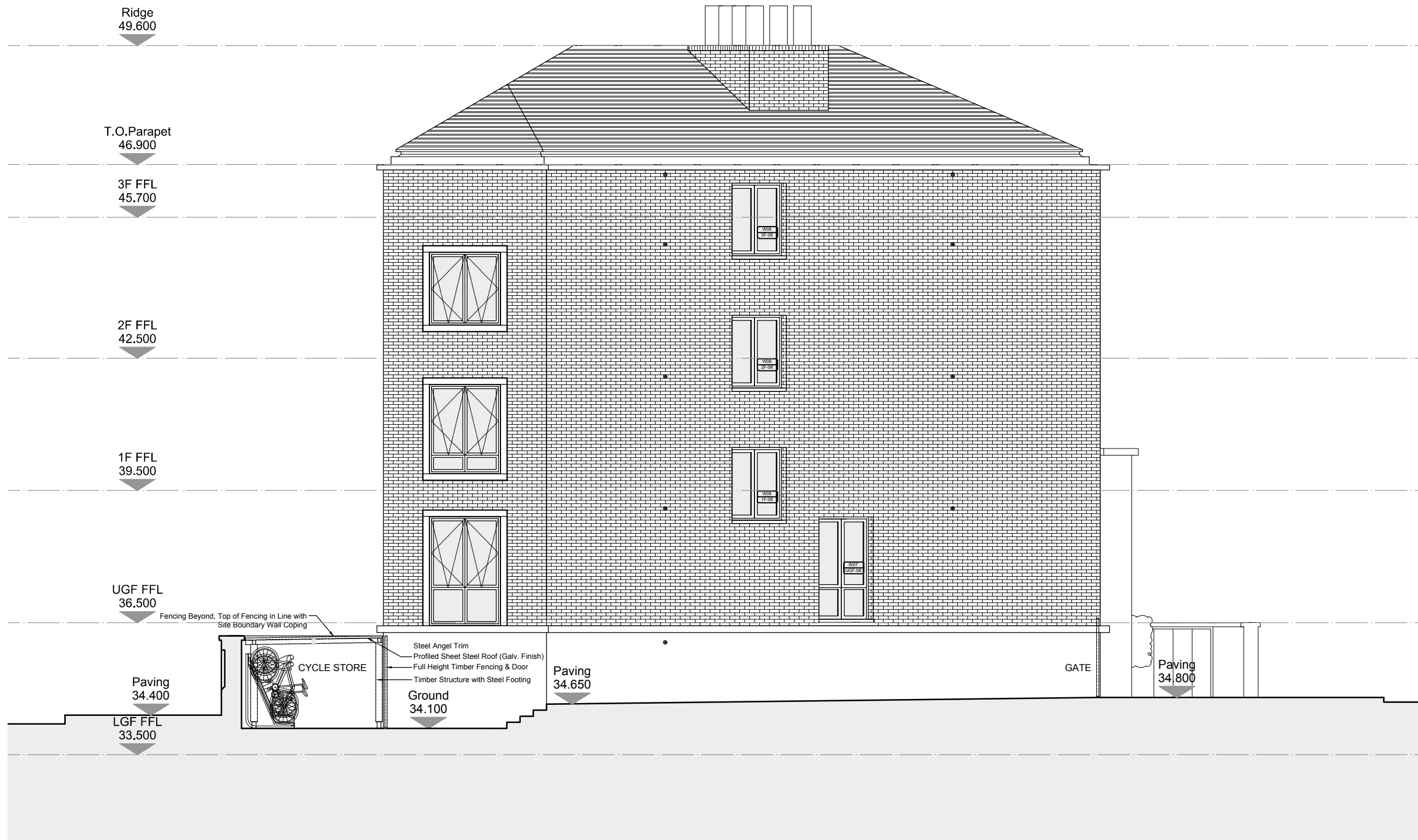
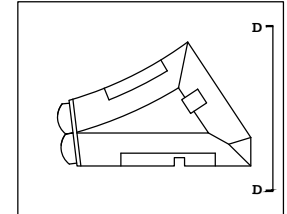
SHEET INFORMATION:
Plotted by : S.HE
Plot date : 25 June 2014 17:37:57

Client:
Zen Developments

Project:
4 St Augustines Road

Title:
Elevation CC

Drawing status:
Discharge Condition



Rev: P06	Date: 25.06.14	Drn: SH	Chk: AW
Issue to discharge Condition 6			
Rev: P05	Date: 22.05.14	Drn: SH	Chk: AW
Issue to discharge Condition 6			
Rev: P04	Date: 08.10.13	Drn: EF	Chk: PG
Minor Graphic amendments			
Rev: P03	Date: 12.09.13	Drn: EF	Chk: PG
Planning (2nd Application)			
Rev: P02	Date: 01.05.13	Drn: CLA	Chk: PG
Conservation officer/ CAAC comments incorporated.			
Rev: P01	Date: 26.02.13	Drn: CLA	Chk: PG
Initial Issue.			

Do not scale off this drawing
Report all errors and omissions to the Architect
Dimensions to be checked on site

SHEET INFORMATION:
Plotted by : S.HE
Plot date : 25 June 2014 17:41:28

Client:
Zen Developments

Project:
4 St Augustines Road

Title:
Elevation DD

Drawing status:
Discharge Condition

Scale @ A3
1:100

Drawing No: 1913-00-DR-0604 P06 Rev:

Appendix B: Semi-vertical Cycle Rack Datasheet

Product specification Sheet

Cycle Stands | Semi Vertical

Sheet Notes

- All dimensions are in mm unless otherwise stated
- Any dimensions scaled from this drawing are taken at readers own risk

Specification

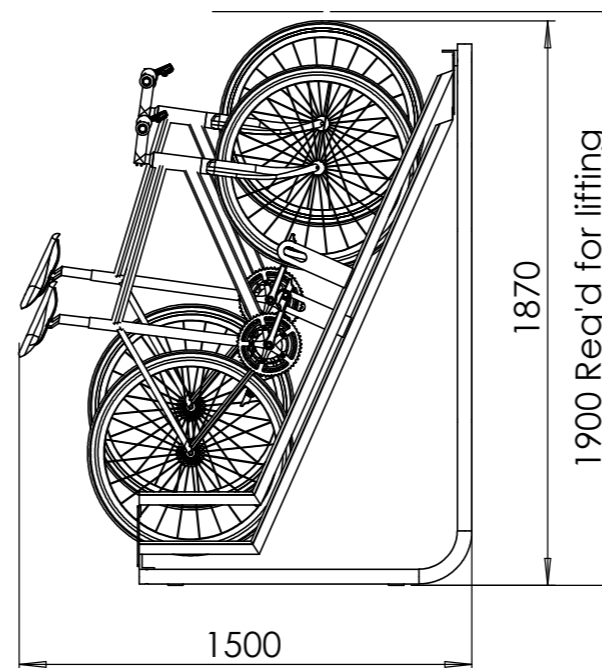
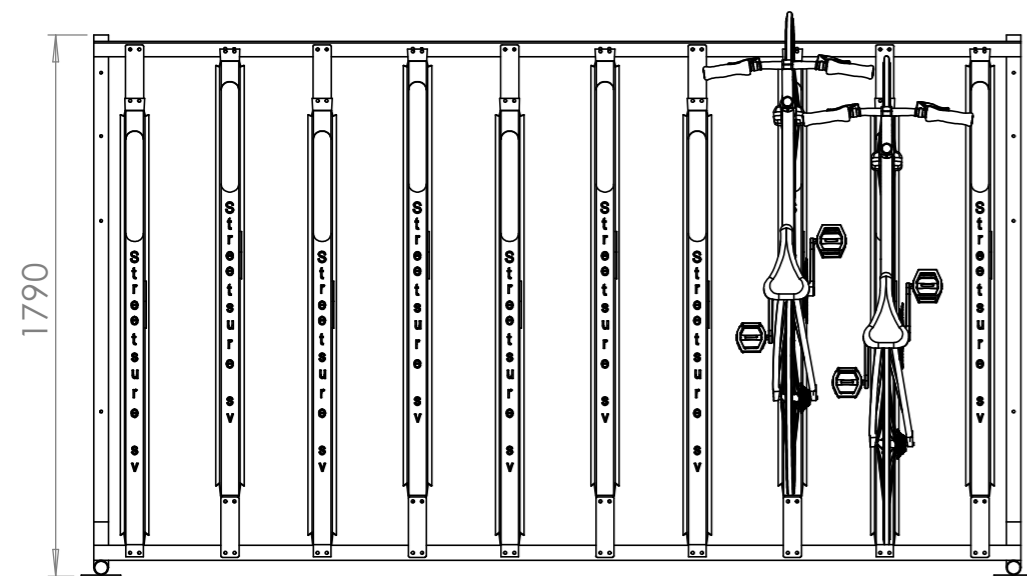
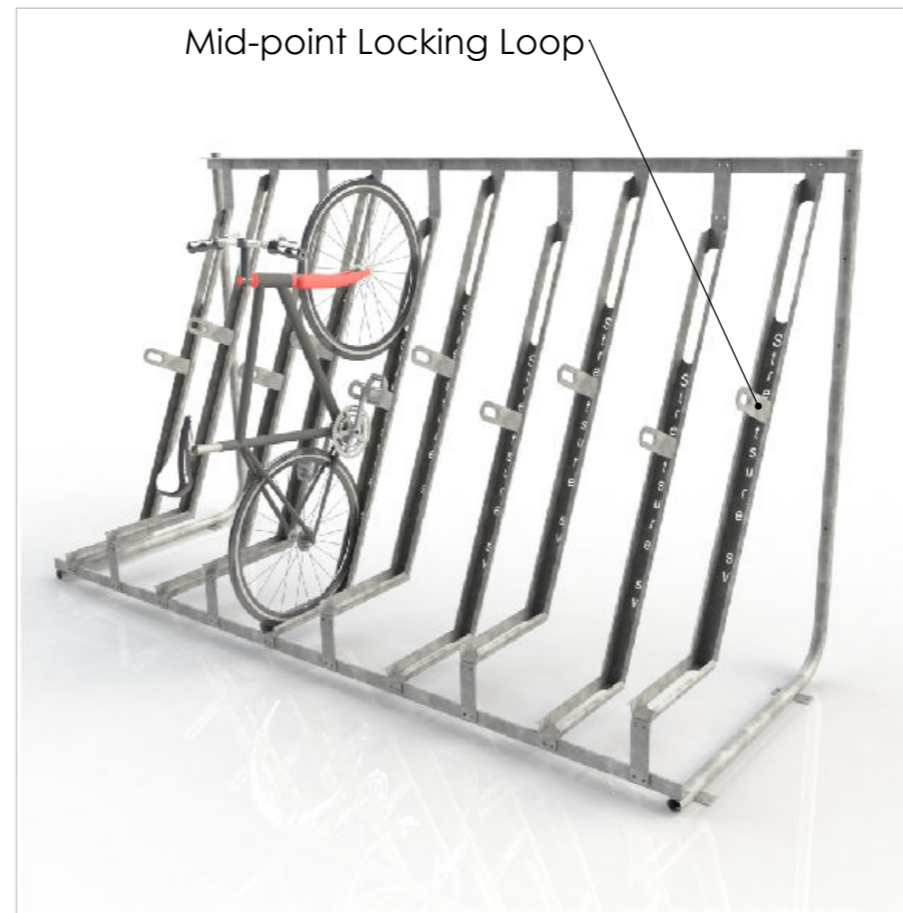
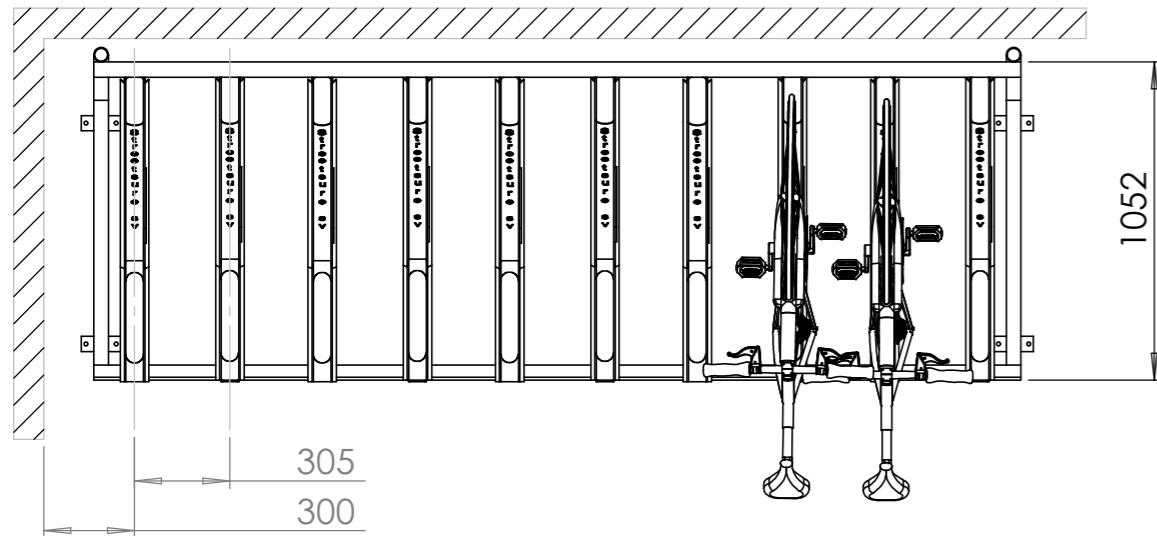
Streetsure "Semi-vert" cycle rack by Bellsure Group

W: www.bellsure.co.uk

E: jason@bellsure.co.uk

T: 01483 568287

- | | |
|----------------|-----------------------------------|
| Finish: | Galvanised or plascoating |
| Size: | As shown on drawing |
| Security: | Specialist mid-point locking loop |
| Fixing options | Surface mounted |
| Warantee | 15 Years |



REVISION	DESCRIPTION	DATE	ENGINEER
 			
<small>streetsuresolutions.co.uk</small> <small>a bellsure group company</small>			
<small>Specialists in providing street furniture and cycle parking infrastructure solutions</small> <small>www.bellsure.co.uk</small>			

T: 01483 568287 | F: 01483 540830 | E: streetsure@bellsure.co.uk

PRODUCT NAME:

Verti 45 Semi-vertical Cycle rack typical 10 cycle configuration

PROJECT

SCALE: 1:50 SHEET SIZE: A3 DRAWN BY: BK CHECKED BY: JD DATE: 17/10/14
 PROJECT NO. DRAWING NO. REVISION