

Lower Ground Floor Plan: Proposed

UCL Wilkins Lower Refectory

Discharge of Conditions
Rev D - 13/08/14

Introduction: Enabling Works 3

The Wilkins Terrace and Lower Refectory project has been split into a number of packages. The Enabling Works 3 (Catering Support) package of the works will provide office space and support facilities for the catering team both during construction and after completion of the Terrace and Lower Refectory.

The Enabling Works 3 (Catering Support) will be undertaken in advance of the Main Works and as such the design team aim to partially discharge conditions relevant to these works as soon as possible.

Enabling Works 3 (Catering Support) Project Areas

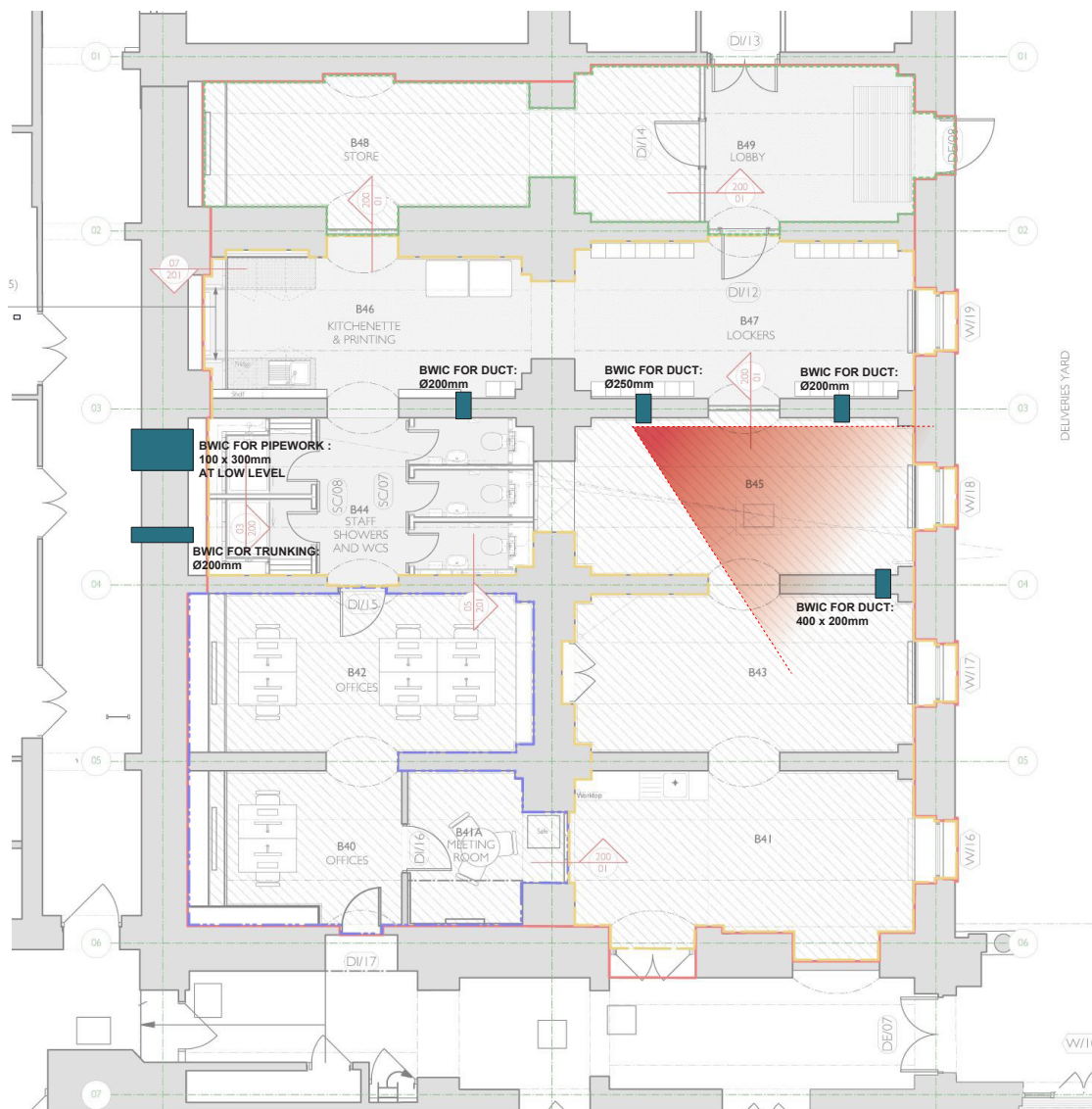
-  Offices, Showers, WCs, Changing, Lockers and Store
-  Preparation for Main Works including drainage and fire protection to window openings. WCs and finishes to be installed as part of Main Works.

UCL Wilkins Lower Refectory

Discharge of Conditions
Rev D - 13/08/14

LBC Condition 3e: Service runs and Ducting - Locations for Penetrations

The following images highlight the indicative locations and dimensions of builders work holes required for ductwork, pipework and trucking to be installed as part of Enabling Works 3.



View indicated on Proposed Plan - WCs, Lower Ground Floor

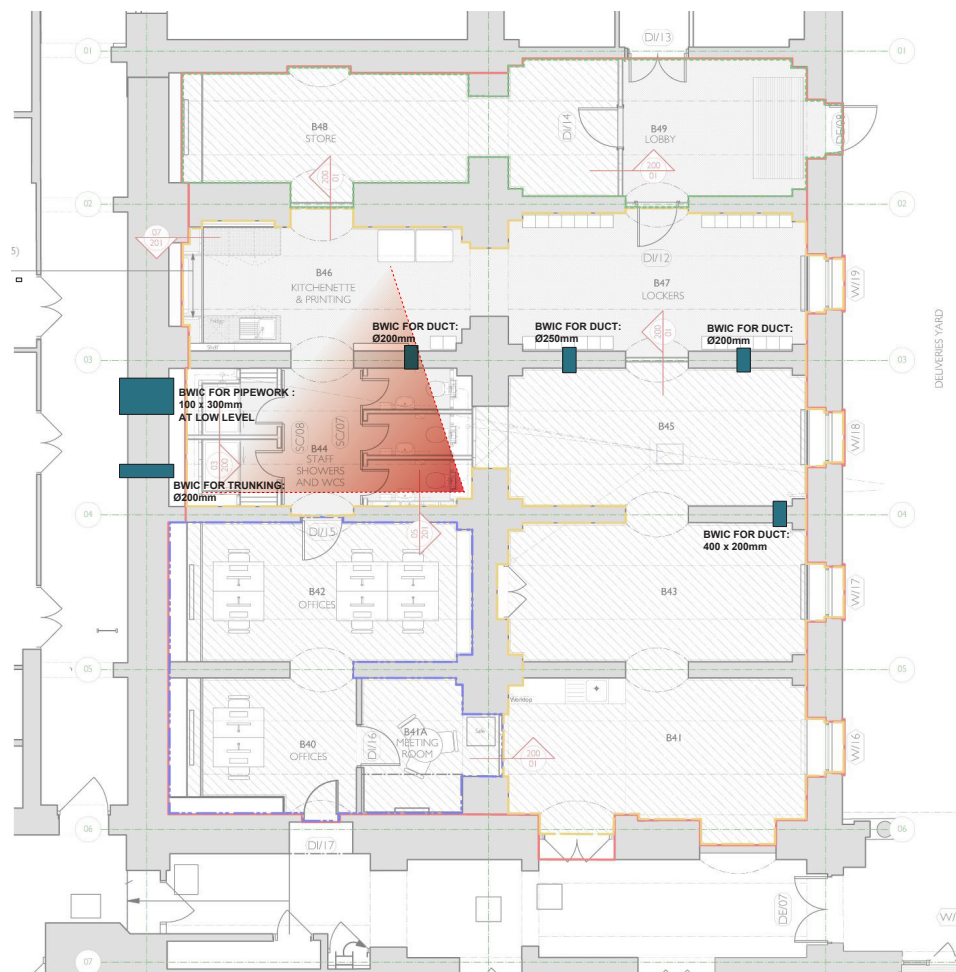


Indicative location of proposed builders work penetrations

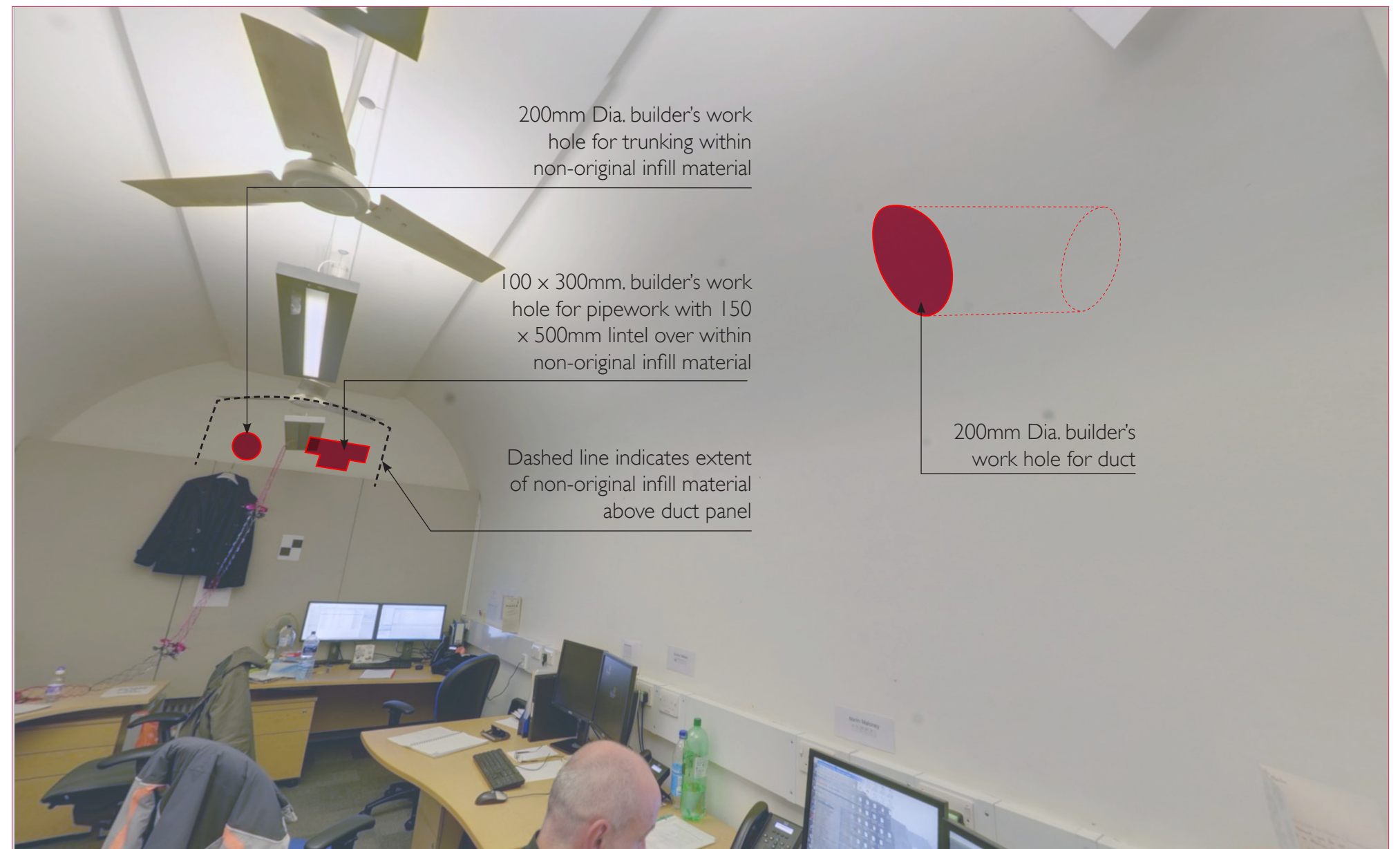
UCL Wilkins Lower Refectory

Discharge of Conditions
Rev D - 13/08/14

LBC Condition 3e:
Service runs and Ducting - Locations
for Penetrations



View indicated on Proposed Plan - WCs LG Floor

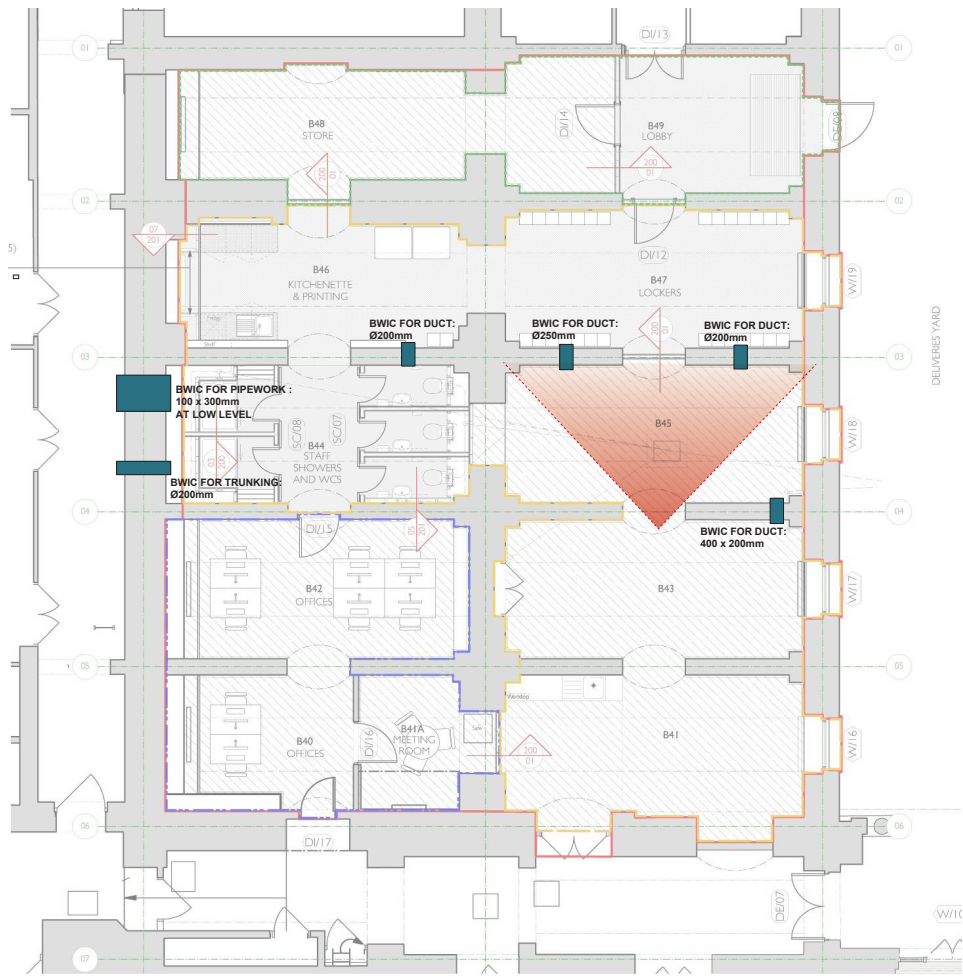


Indicative location of proposed builders work penetrations

UCL Wilkins Lower Refectory

Discharge of Conditions
Rev D - 13/08/14

LBC Condition 3e:
Service runs and Ducting - Locations
for Penetrations



View indicated on Proposed Plan - WCs, LG Floor

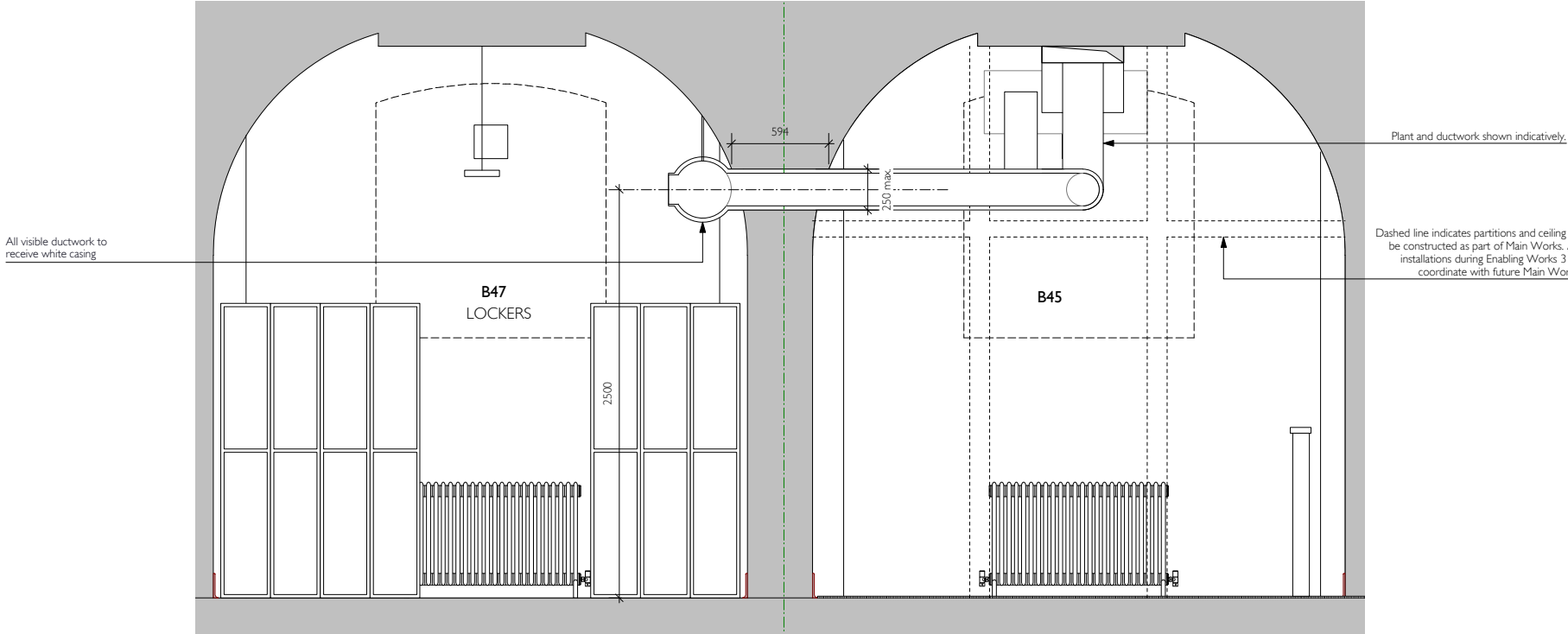


Indicative location of proposed builders work penetrations

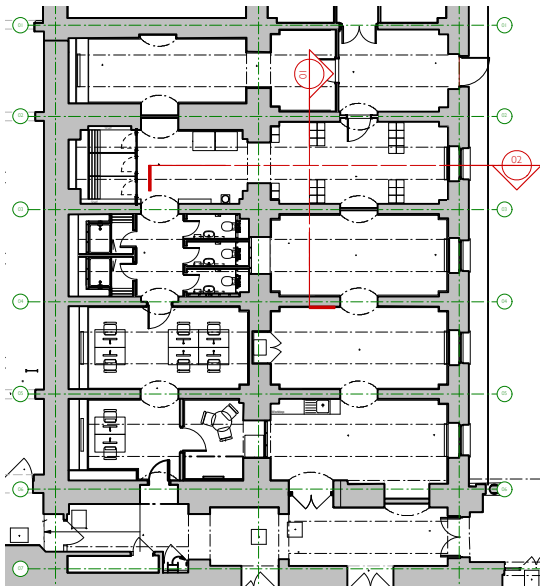
UCL Wilkins Lower Refectory

Discharge of Conditions
Rev D - 13/08/14

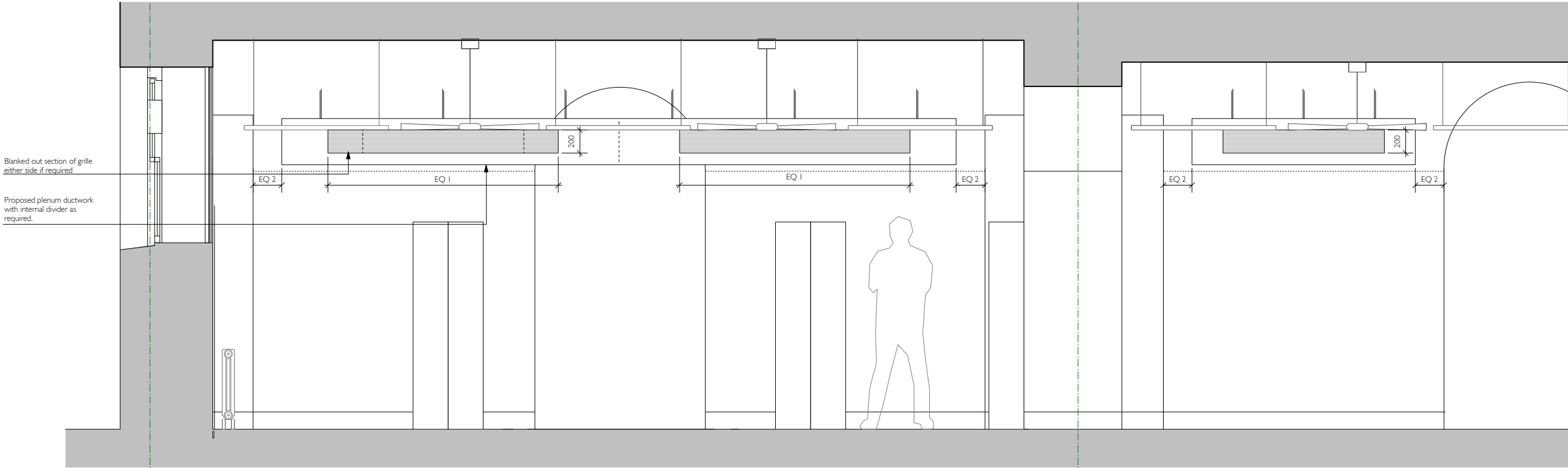
LBC Condition 3e:
Service runs and Ducting - Typical
Duckwork installation



01 Section through Rooms B47 & B45
1:20



03 Key Plan
NTS



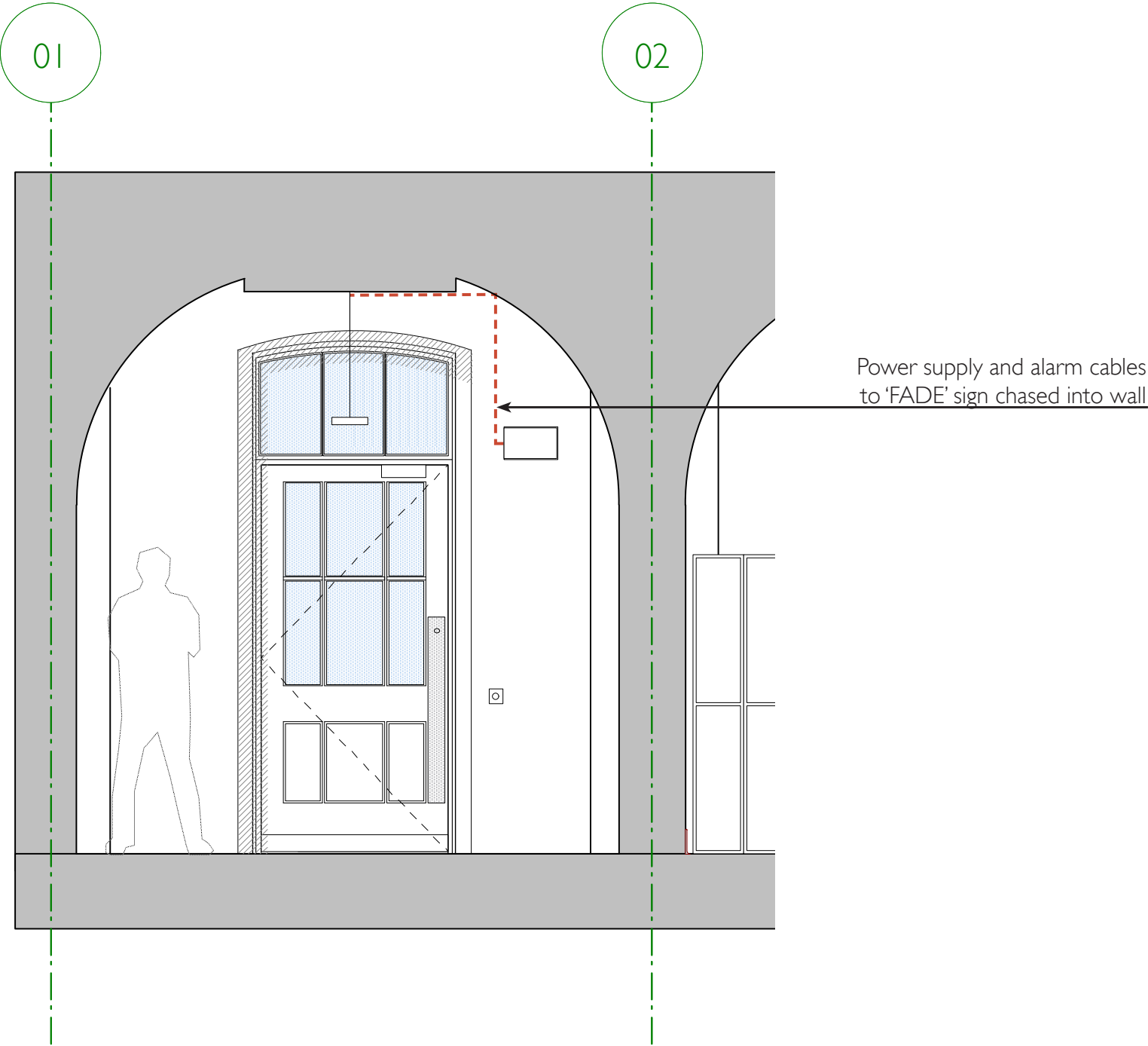
02 Section through Rooms B47 & B46
1:20

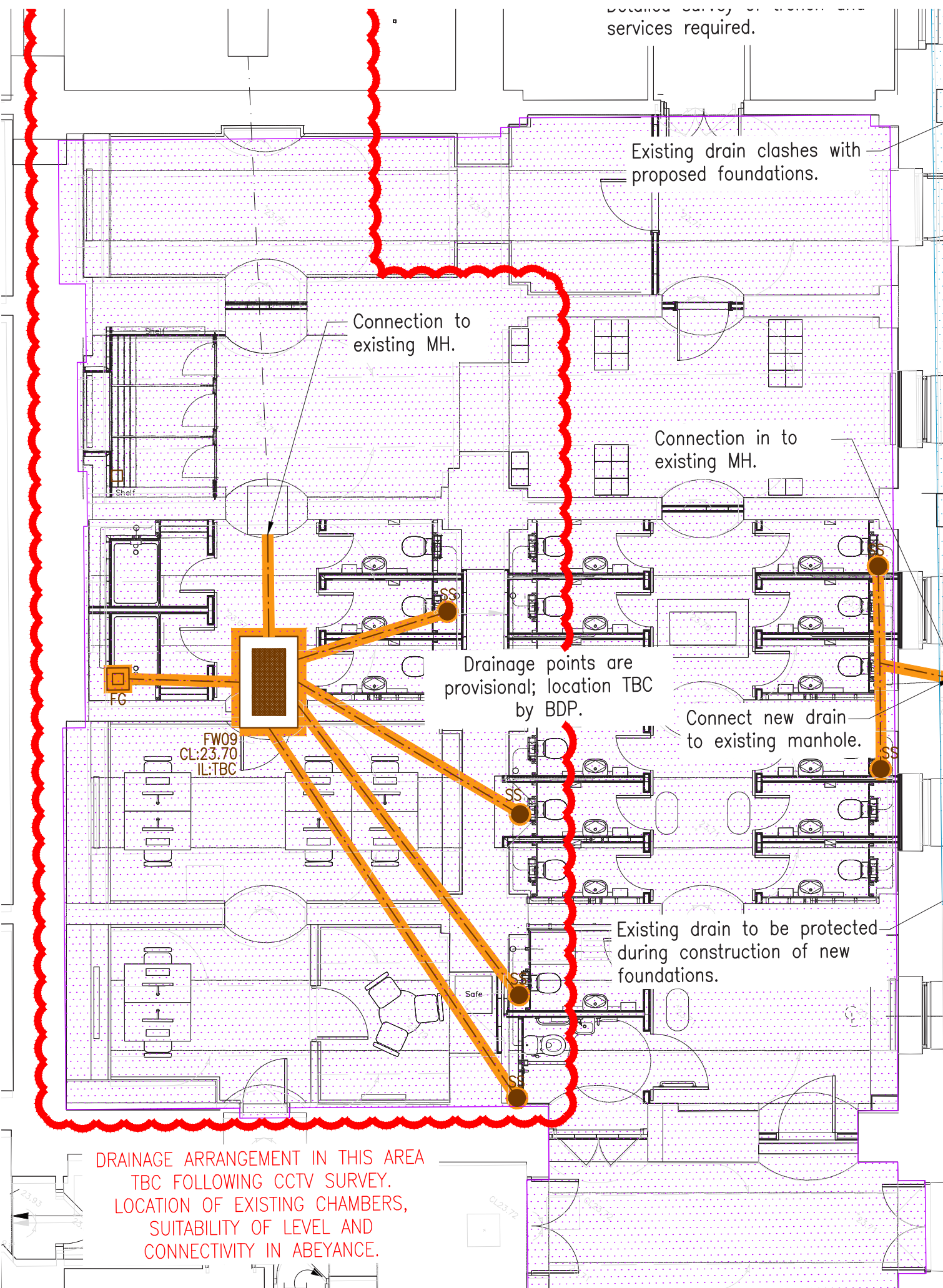
UCL Wilkins Lower Refectory

Discharge of Conditions
Rev D - 13/08/14

LBC Condition 3e: Service runs and Ducting - FADE sign installation

A 'Fire Alarm Activated, Do Not Enter' (FADE) sign is required internally adjacent to new door from the Catering Support lobby, to deter access to the future service yard when a fire alarm has been activated in the area. The existing power and fire alarm supplies will be adapted to supply the sign. Cables and will be chased into the wall to minimise visible clutter.



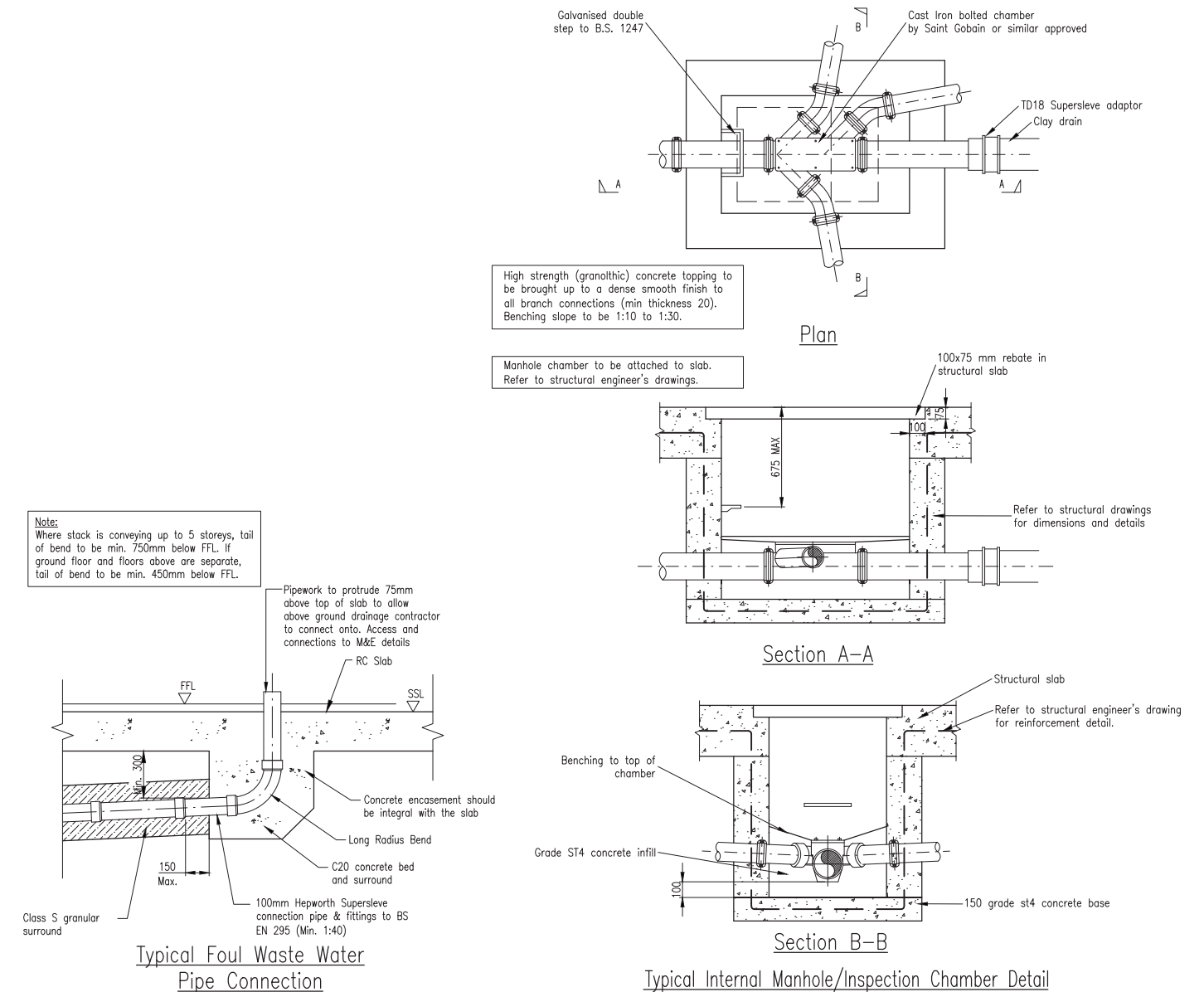


UCL Wilkins Lower Refectory

Discharge of Conditions
Rev D - 13/08/14

LBC Condition 3e: Drainage

New drainage routes are required for the proposed showers and WCs. Drainage routes and a new inspection chamber are to be installed as part of Enabling Works 3 as indicated in the drawing opposite. A trench approximately 300mm wide is required for the installation of each drainage run.



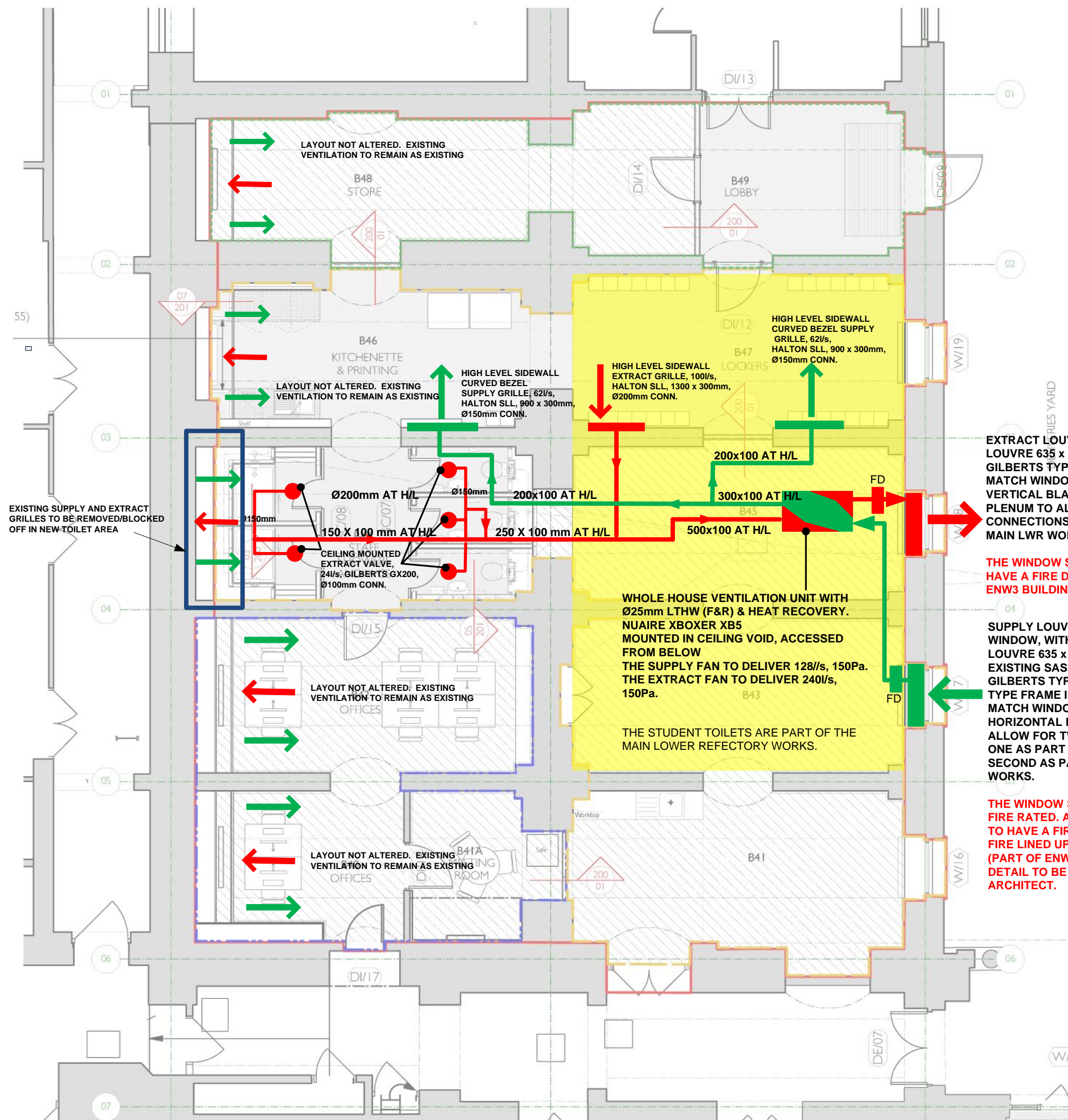
UCL Wilkins Lower Refectory

Discharge of Conditions

Rev D - 13/08/14

LBC Condition 3e:

Mechanical, Electrical and Public
Health Services Drawings



EXTRACT LOUVRE AT HIGH LEVEL IN WINDOW, WITH PLENUM. LOUVRE 635 x 355mm. TO FIT IN EXISTING SASH PANE. LOUVRE TO BE GILBERTS TYPE WGC 38 CHANNEL TYPE FRAME IN WHITE PPC FINISH TO MATCH WINDOW FRAME. VERTICAL BLADES DIVERTING EXHAUST AIR NORTH. PLENUM TO ALLOW FOR TWO CONNECTIONS; PLENUM TO ALLOW FOR TWO CONNECTIONS; ONE AS PART OF THESE WORKS, SECOND AS PART OF MAIN LWR WORKS.

THE WINDOW SHALL BE 60 MINUTE FIRE RATED. ALLOW FOR DUCTWORK TO HAVE A FIRE DAMPER AND BE FIRE LINED UP TO THE FIRE BOARD (PART OF ENW3 BUILDING WORKS). DETAIL TO BE DEVELOPED WITH ARCHITECT.

SUPPLY LOUVRE AT HIGH LEVEL IN WINDOW, WITH PLENUM. LOUVRE 635 x 355mm. TO FIT IN EXISTING SASH PANE. LOUVRE TO BE GILBERTS TYPE WGC 38 CHANNEL TYPE FRAME IN WHITE PPC FINISH TO MATCH WINDOW FRAME. HORIZONTAL BLADES. PLENUM TO ALLOW FOR TWO CONNECTIONS; ONE AS PART OF THESE WORKS, SECOND AS PART OF MAIN LWR WORKS.

THE WINDOW SHALL BE 60 MINUTE FIRE RATED. ALLOW FOR DUCTWORK TO HAVE A FIRE DAMPER AND BE FIRE LINED UP TO THE FIRE BOARD (PART OF ENW3 BUILDING WORKS). DETAIL TO BE DEVELOPED WITH ARCHITECT.

NOTES:

- EXISTING HEATING, INCLUDING RADIATORS AND RADIANT CEILING PANEL TO BE RETAINED.
- LTHW CONNECTION FOR VENTILATION UNIT TAKEN FROM ADJACENT RADIATOR CIRCUIT.
- NO COOLING TO BE PROVIDED.

CONTRACT ISSUE	REV D	12/06/14
16 Brewhouse Yard Clerkenwell London EC1V 4LJ United Kingdom		BDP.
PROJECT TITLE TEMPORARY REFECTORY CATERING OFFICES AND WC'S		
DRAWING TITLE Ventilation Layout		SCALE: N.T.S 08/05/14
Project No: P2005828	DRAWING NUMBER: SCH-M-57-01	REVISION: D

Existing containment to be identified. It is proposed to extended and modified existing containment to incorporate new 50x50mm trunking

Contractor shall modify existing small power circuit DB/EFD/GB/3L2 so that the circuit only serves B46 only. New small power circuit shall be provided to serve area B44, circuit ref: DB/EFD/GB/8L1

Provide new 50x50mm trunking for small power and lighting distribution at high level

New trunking ceiling mounted

50x50mm trunking drops down from HL to serve spur for hand dryer (Typical)

Existing trunking wall mounted

Existing distribution board DB/EFD/GB

SCHEDULE OF CIRCUIT DETAILS FOR THE INSTALLATION

Customer Code UCL148
Customer Name UCL
Customer Site WILKINS
Job Number 70952
Test Date 10/05/2010

Unique Reference : DB113807
Site DB Number : EFD/GB

Location of the distribution board B97	Supply to distribution board is from : DB094179,RM B36	No of phases: 3	Nominal Voltage: 400 V
Distribution board designation EFD/GB	Overcurrent protective device for the distribution circuit : Type BS (EN) 88 Rating 100 A	Associated RCD (if any): BS(EN) RCD No of Poles: LAn mA	Conductor Size: 25.0
Supply Cable Type: F			

CIRCUIT DETAILS

Circuit Number & Phase	Circuit Designation	Type of wiring	Reference Method	No of Points Served	Circuit Conductors: csa		Max. disconnection time permitted by BS 7671 (s)	OVERCURRENT PROTECTIVE DEVICES			RCD	Maximum Zs permitted by BS 7671 (Ω)
					Live	CPC		BS (EN)	Rating (A)	Short circuit capacity (kA)		
					(mm2)	(mm2)						
1L1	SKTS B42/B40	D	B	4	2.5,2.5	2.5	0.4	BS EN 60898 TYPE C	32	10	N/A	0.72
1L2	SKTS B41A	D	B	5	2.5,2.5	2.5	0.4	BS EN 60898 TYPE C	32	10	N/A	0.72
1L3	SKTS B41	D	B	3	2.5	2.5	0.4	BS EN 60898 TYPE C	20	10	N/A	1.15
2L1	SPURS B40/B42	D	B	3	2.5	2.5	0.4	BS EN 60898 TYPE C	20	10	N/A	1.15
2L2	SKTS B44/B45	D	B	15	2.5,2.5	2.5	0.4	BS EN 60898 TYPE C	32	10	N/A	0.72
2L3	SPUR B41	D	B	1	2.5	2.5	0.4	BS EN 60898 TYPE C	20	10	N/A	1.15
3L1	SKTS B47/B46	D	B	15	2.5,2.5	2.5	0.4	BS EN 60898 TYPE C	32	10	N/A	0.72
3L2	POWER B45 (MODIFIED)	D	B	3	2.5	2.5	0.4	BS EN 60898 TYPE C	20	10	N/A	1.15
3L3	SKTS B41/B43	D	B	15	2.5,2.5	2.5	0.4	BS EN 60898 TYPE C	32	10	N/A	0.72
4L1	SKTS B46/B47	D	B	3	2.5	2.5	0.4	BS EN 60898 TYPE C	20	10	N/A	1.15
4L2	SKTS B49/B48	D	B	15	2.5,2.5	2.5	0.4	BS EN 60898 TYPE C	32	10	N/A	0.72
4L3	SPURS B41/B43	D	B	4	2.5	2.5	0.4	BS EN 60898 TYPE C	20	10	N/A	1.15
5L1	H/DRYER B39	D	B	1	2.5	2.5	0.4	BS EN 60898 TYPE C	20	10	N/A	1.15
5L2	SPUR B49/B48	D	B	4	2.5	2.5	0.4	BS EN 60898 TYPE C	20	10	N/A	1.15
5L3	LTS B40/B42	D	B	5	1.5	1.5	0.4	BS EN 60898 TYPE C	10	10	N/A	2.30
6L1	LTS B39	D	B	2	1.5	1.5	0.4	BS EN 60898 TYPE C	10	10	N/A	2.30
6L2	HUB SPUR B43	D	B	1	2.5	2.5	0.4	BS EN 60898 TYPE C	16	10	N/A	1.44
6L3	LTS B41/B43/B41A	D	B	10	1.5	1.5	0.4	BS EN 60898 TYPE C	10	10	N/A	2.30
7L1	SKTS B42	D	B	6	2.5,2.5	2.5	0.4	BS EN 60898 TYPE C	32	10	N/A	0.72
7L2	Spare	N/A	N/A	N/A	N/A	N/A	0	N/A	N/A	N/A	N/A	N/A
7L3	LTS B49/B47/B45	D	B	12	1.5	1.5	0.4	BS EN 60898 TYPE C	10	10	N/A	2.30
8L1	POWER B44 (NEW)	D	B	3	4.0	4.0	0.4	BS EN 60898 TYPE C	20	10	N/A	1.15
8L2	LTS B44 (NEW)	D	B	3	2.5	2.5	0.4	BS EN 60898 TYPE C	20	10	N/A	1.15
8L3	LTS B48/B46 (MODIFIED)	D	B	9	1.5	1.5	0.4	BS EN 60898 TYPE C	10	10	N/A	2.30

16 Brewhouse
Yard Clerkenwell
London
EC1V 4LJ
United Kingdom

BDP.

PROJECT TITLE
TEMPORARY REFECTORY
CATERING OFFICES AND WC'S

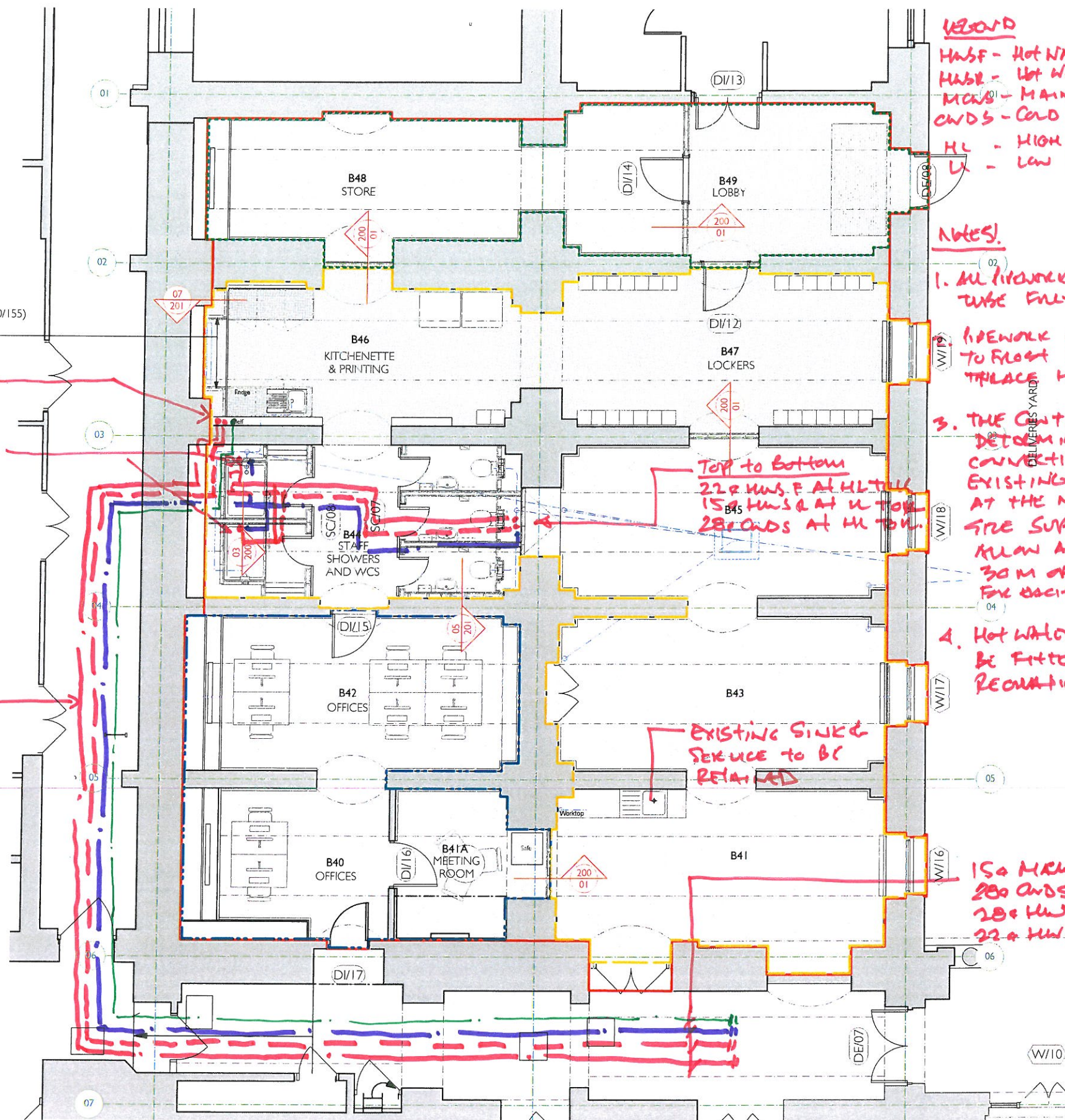
DRAWING TITLE
Small Power & Containment
Layout

SCALE:
N.T.S
23/04/14

Project No:
P2005828

DRAWING NUMBER:
SCH-E-60-01

REVISION:
A



OUTLINE SCOPE OF WORKS

PHASE 1

- B49 Lobby
 - New external door installed in modified opening.
 - Provide new plasterboard partition (K10/125) and door in arched opening.
 - Make good any damaged existing exposed flooring (assumed terrazzo).
 - Existing coved skirting retained and made good where necessary.
 - Provide new entrance matting (N10/302) to be laid over existing terrazzo flooring.
 - Existing lighting switching modified to suit new layout.
 - Repaint walls and ceiling (M60/110).

B48 Store / New Shop Offices

- Existing carpet and skirting retained, provide new threshold strip to door.
- Dado trunking retained.
- Radiator and panel concealing ducts retained.
- Provide new plasterboard partition (K10/125) and door.
- New partition in arched opening (K10/125).
- Lighting and ceiling fans retained in existing location.
- Repaint walls and ceiling (M60/110).

PHASE 2

- Shop office currently occupying B40, B41A & B42 relocated to B48 to enable works to this area.

B40, B41A & B42 New Catering Offices

- Install new DI/15 doorset.
- Install retained meeting room doorset as DI/16.
- Provide new independent lining (K10/155) to separate B41A and B41.
- Existing carpet and skirting retained.
- Dado trunking retained and modified to suit new openings.
- Radiator and panel concealing ducts retained.
- Lighting and ceiling fans retained in existing location.
- Repaint walls and ceiling (M60/110).

PHASE 3

B41, B43, B45 Existing Offices.

- Refurbish all windows.
- Apply opaque film (L10/212) to inside face of windows W/17 & W/18.
- Provide new fire lining to 2no. window openings W/17 & W/18.
- Provide new ventilation grille to W/17 & W/18.
- Form new man hole.
- Provide 4no. stub stacks with drainages runs to new man hole.
- Retain existing stub stack and drainage route adjacent to existing kitchenette.
- Retain and make good all existing floor finishes, skirting, lighting, ceiling fans and dado trunking.
- Install 2no. fan units as indicated on MEP drawings.

B46/B47 Kitchenette, Printing and Lockers

- Refurbish window (M60/130).
- Apply opaque film (L10/212) to inside face of windows W/19
- Provide new fire lining to 2no. window openings W/19
- Make good any damaged existing exposed flooring (assumed terrazzo).
- Provide new low level independent wall lining (K10/155) to end of kitchenette units below existing panel and ductwork.
- Provide 30no. locker units (N10/220)
- Install kitchenette (N11)
- Position of existing B46 radiator below end panels adjusted to sit centred between linings. Pipework adjusted to suit.
- Linear ventilation grille adjusted to suit new partitions.
- Dado trunking retained adjacent to printers. New connections made where required around new openings.

B44 Staff Showers and WCs

- Provide new partitions and laminate screens to form WC / Shower Cubicles.
- Provide sanitary fittings as set out in specification (N13).

LEGEND

- HWSF - Hot Water Service From
- HWSR - Hot Water Service Return
- MWS - MAINS COLD WATER SERVICE
- CWS - COLD WATER DOWN SERVICE

- HL - HIGH LEVEL
- L - LOW LEVEL.

NOTES

1. ALL PIPEWORK WILL BE CORRO TUBE FULLY INSULATED

2. PIPEWORK IN AREA SUBJECT TO FLOOD WILL BE ELECTRICAL TRIPLESS HEATED

3. THE CONTRACTOR WILL DETERMINE ON SITE CONNECTION POINT TO EXISTING INSTALLATION AT THE NEAREST SUITABLE FIRE SUPPLY. FOR TENDER ALLOW ADDITIONAL 30M OF PIPEWORK RUN. FOR EACH SERVICE

4. HOT WATER RETURN WILL BE FITTED WITH DOUBLE REGULATING VALVES.

EXISTING SINK & SERVICE TO BE RETAINED

150 MWS AT HL
200 CWS AT HL
200 HWS F AT HL
220 HWS R AT HL.

SEE NOTES

LEFT TO RIGHT

150 HWS F AT HL TO U
150 HWS R AT HL TO HL
150 MWS AT HL TO U

150 HWS F & CWS DED TO SHOWER MIXER

PIPEWORK IN STORE AT HL

Revision	Date	Amendment	Notes
T1	11.04.14	Tender Issue	Site area

0 5 10 metres

BDP.

JOB TITLE:

UCL WTLR ENABLING WORKS.3

DRAWING TITLE:

DOMESTIC WATER SERVICES
HIGH LEVEL

SCALE HTS

CREATED BY KMF

DATE APRIL 2014

JOB No

P200 5528

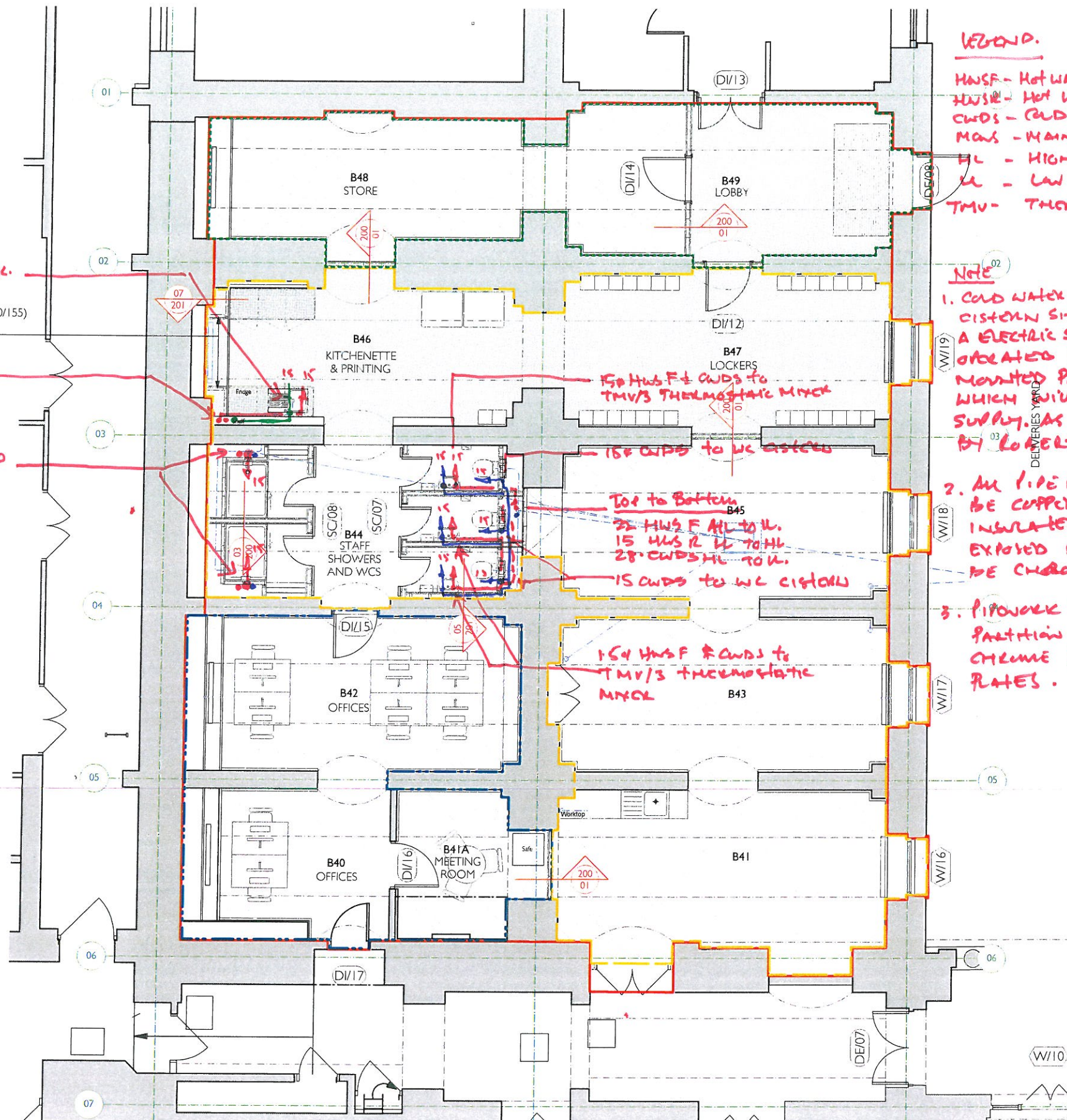
DRAWING NUMBER

SCH-P-53-01

REVISION

—

NO DIMENSIONS ARE TO BE TAKEN FROM THIS DRAWING. THE CONTRACTOR SHALL BE RESPONSIBLE FOR OBTAINING ALL DIMENSIONS AND QUANTITIES OF DISCREPANCY. THE DRAWING IS THE PROPERTY OF CH2M HILL AND IS NOT TO BE REPRODUCED OR TRANSMITTED IN ANY FORM OR BY ANY MEANS, ELECTRONIC OR MECHANICAL, INCLUDING PHOTOCOPYING, RECORDING, OR BY ANY INFORMATION STORAGE AND RETRIEVAL SYSTEM, WITHOUT THE WRITTEN PERMISSION OF CH2M HILL.



LEGEND.

HWSF - Hot Water Service Flow
HWSR - Hot Water Service Return
CWS - Cold Water Drain Service
MWS - Mains Cold Water Service

HL - HIGH LEVEL
LL - LOW LEVEL.

TMV - THERMOSTATIC MIXER VALVE.

NOTE

1. COLD WATER SUPPLY TO WC CISTERN SHALL INCORPORATE A ELECTRIC SOLENOID VALVE OPERATED BY A CONTACT MOUNTED PRESENCE DETECTOR WHICH WILL OPEN & CLOSE SUPPLY AS MANUFACTURED BY ROBERT PEARSON & CO.

2. ALL PIPEWORK WILL BE COPPER TUBE FULLY INSULATED WHERE EXPOSED PIPEWORK WILL BE CHROME PLATE.

3. PIPEWORK EXISTING WALLS / PARTITION WILL HAVE CHROME PLATE COVER PLATES.

OUTLINE SCOPE OF WORKS

PHASE 1

B49 Lobby

- New external door installed in modified opening.
- Provide new plasterboard partition (K10/125) and door in arched opening.
- Make good any damaged existing exposed flooring (assumed terrazzo).
- Existing coved skirting retained and made good where necessary.
- Provide new entrance matting (N10/302) to be laid over existing terrazzo flooring.
- Existing lighting switching modified to suit new layout.
- Repaint walls and ceiling (M60/110).

B48 Store / New Shop Offices

- Existing carpet and skirting retained, provide new threshold strip to door.
- Dado trunking retained.
- Radiator and panel concealing ducts retained.
- Provide new plasterboard partition (K10/125) and door.
- New partition in arched opening (K10/125).
- Lighting and ceiling fans retained in existing location.
- Repaint walls and ceiling (M60/110).

PHASE 2

Shop office currently occupying B40, B41A & B42 relocated to B48 to enable works to this area.

B40, B41A & B42 New Catering Offices

- Install new DI/15 doorset.
- Install retained meeting room doorset as DI/16.
- Provide new independent lining (K10/155) to separate B41A and B41.
- Existing carpet and skirting retained.
- Dado trunking retained and modified to suit new openings.
- Radiator and panel concealing ducts retained.
- Lighting and ceiling fans retained in existing location.
- Repaint walls and ceiling (M60/110).

PHASE 3

B41, B43, B45 Existing Offices.

- Refurbish all windows.
- Apply opaque film (L10/212) to inside face of windows W/17 & W/18.
- Provide new fire lining to 2no. window openings W/17 & W/18.
- Provide new ventilation grille to W/17 & W/18.
- Form new man hole.
- Provide 4no. stub stacks with drainages runs to new man hole.
- Retain existing stub stack and drainage route adjacent to existing kitchenette.
- Retain and make good all existing floor finishes, skirting, lighting, ceiling fans and dado trunking.
- Install 2no. fan units as indicated on MEP drawings.

B46/B47 Kitchenette, Printing and Lockers

- Refurbish window (M60/130).
- Apply opaque film (L10/212) to inside face of windows W/19
- Provide new fire lining to 2no. window openings W/19
- Make good any damaged existing exposed flooring (assumed terrazzo).
- Provide new low level independent wall lining (K10/155) to end of kitchenette units below existing panel and ductwork.
- Provide 30no. locker units (N10/220)
- Install kitchenette (N11)
- Position of existing B46 radiator below end panels adjusted to sit centred between linings. Pipework adjusted to suit.
- Linear ventilation grille adjusted to suit new partitions.
- Dado trunking retained adjacent to printers. New connections made where required around new openings.

B44 Staff Showers and WCs

- Provide new partitions and laminate screens to form WC / Shower Cubicles.
- Provide sanitary fittings as set out in specification (N13).
- Provide separate drainage to new stub stacks.

BDP.

JOB TITLE:

UCL WTLR ENABLING WORKS 3

DRAWING TITLE:

DOMESTIC WATER SERVICES LOW LEVEL

SCALE **MTS.**

CREATED BY **KHF**

DATE **APRIL 2014**

JOB NO

P2005828

DRAWING NUMBER

SCM-P-S3-04

REVISION

-

Revision	Date	Amendment
T1	11.04.14	Tender Issue.

Notes

Site area

0 5 10 metres

ALL DIMENSIONS ARE IN METRES UNLESS OTHERWISE STATED. DIMENSIONS ARE GIVEN TO THE CENTRE OF THE ELEMENT UNLESS OTHERWISE STATED. DIMENSIONS ARE GIVEN TO THE FACE OF THE ELEMENT UNLESS OTHERWISE STATED. DIMENSIONS ARE GIVEN TO THE CENTRE OF THE ELEMENT UNLESS OTHERWISE STATED. DIMENSIONS ARE GIVEN TO THE FACE OF THE ELEMENT UNLESS OTHERWISE STATED.