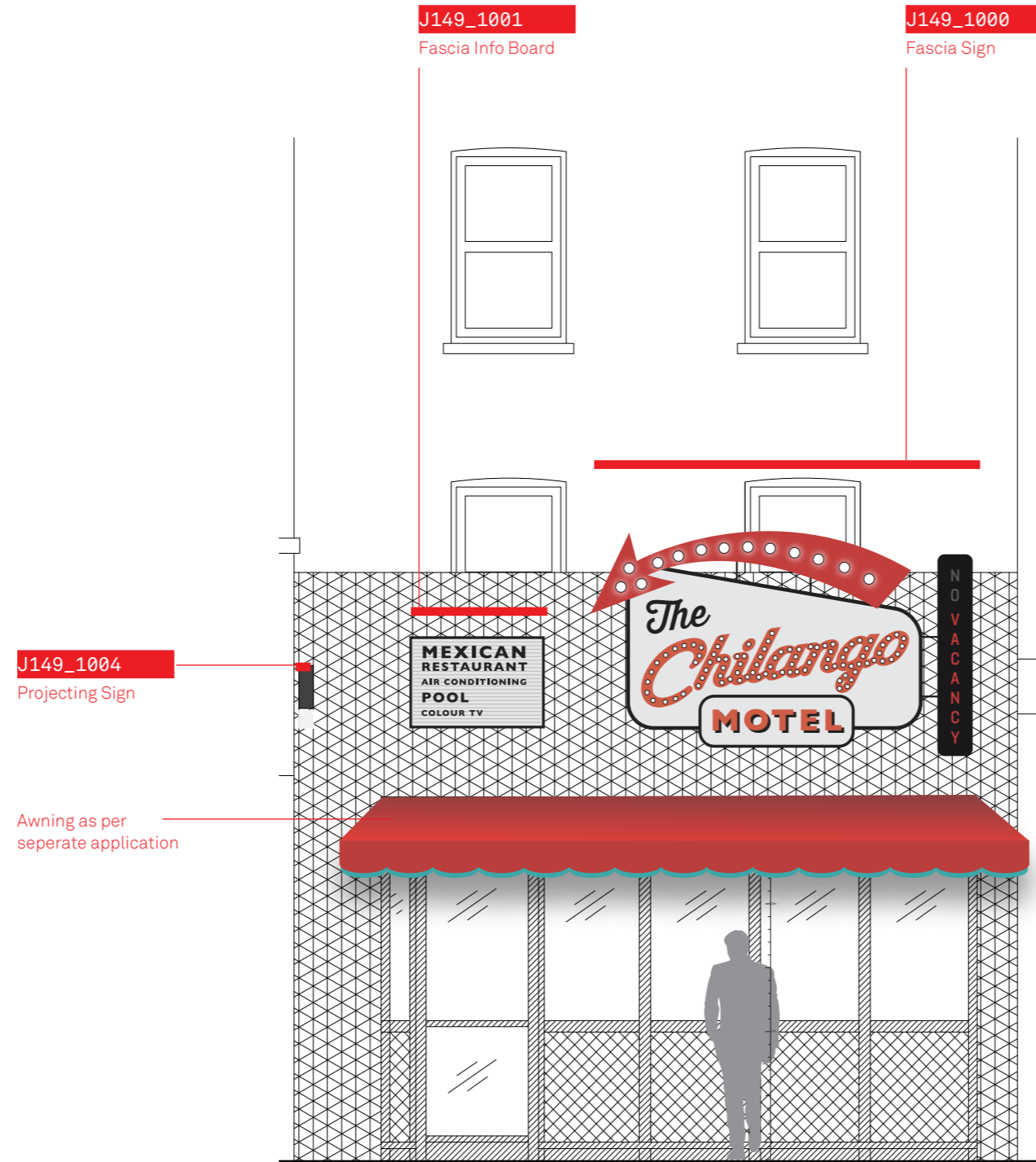


Fascia Elevation Option 1

CONTRACTOR TO ADVISE

ALL DIMENSIONS IN MILLIMETERS AND TO BE CONFIRMED PRIOR TO PRODUCTION

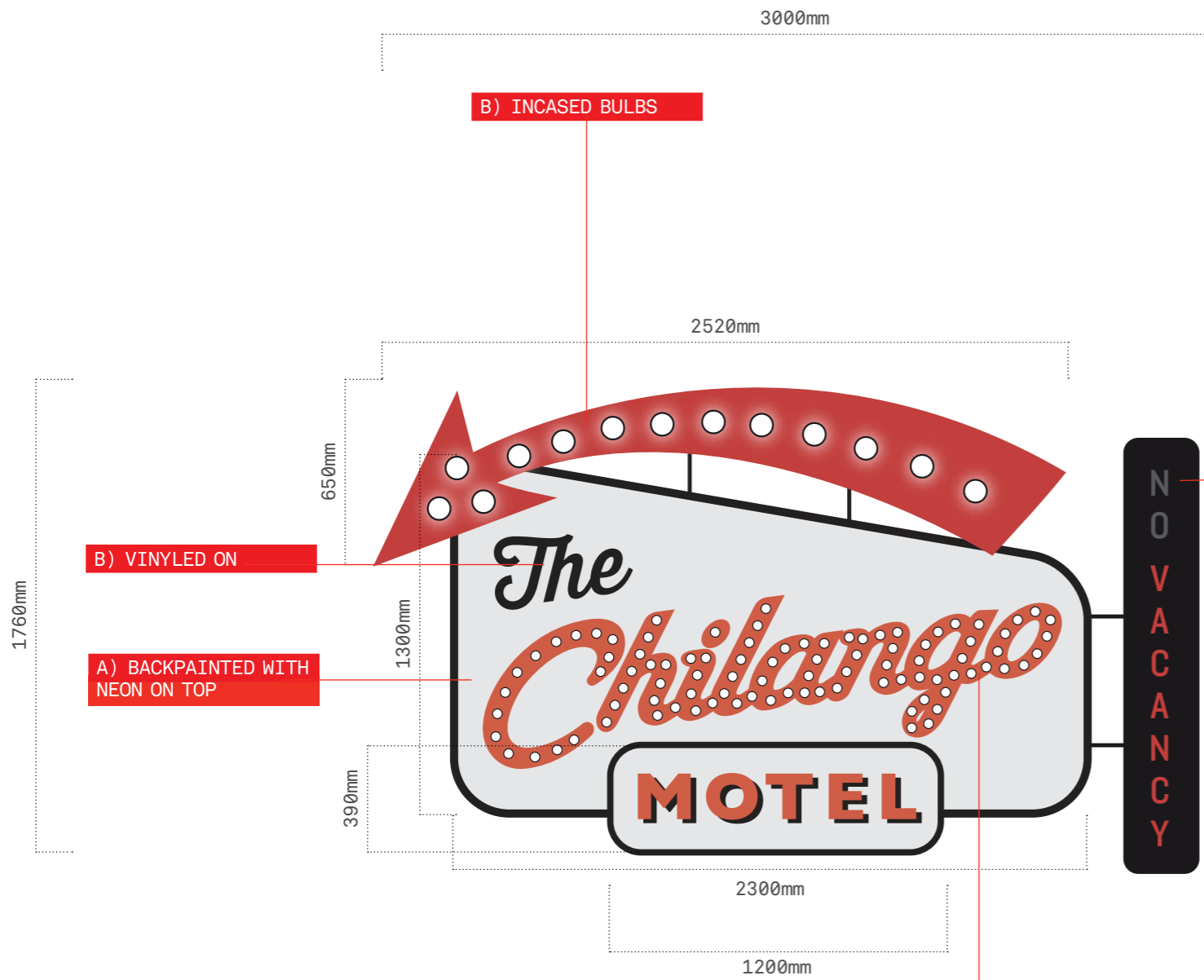


Chilango Camden Town	Drawing Number	Issue Date	Revision		
Fascia Elevation Option 1	14010_GA_008	05.08.14	A		

Fascia Sign

CONTRACTOR TO ADVISE

ALL DIMENSIONS IN MILLIMETERS AND TO BE CONFIRMED PRIOR TO PRODUCTION



Depth of sign to be approx 150mm - contractor to advise.

A) BACKPAINTED WITH NEON ON TOP

Illumination to 'NO' part of sign to alternate between on and off.

- RAL 3033 Pearl Pink
- RAL 7039 Quartz Grey
- RAL 9004 Signal Black

Construction

- See individual labels. Whole sign to be made of steel and powder coated then vinyled applied where indicated and neon where labelled. Each section to be joined with rods which will also be used to encase electrical supply to sign. Thickness of sign to be 150mm.

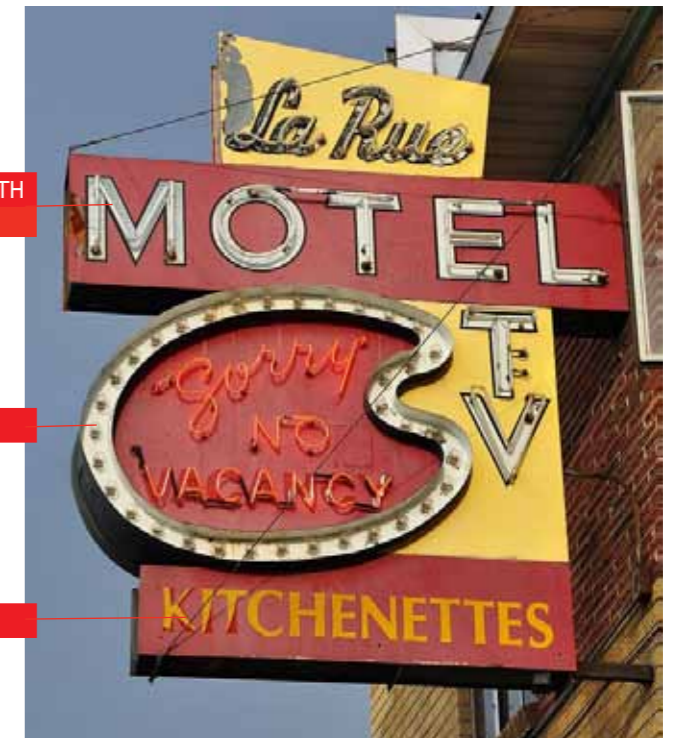
Lighting

- Bulbs to be used where indicated, neon to be used over vinyled text areas where indicated.

A) BACKPAINTED WITH NEON ON TOP

B) INCASED BULBS

B) VINYLED ON



B) INCASED BULBS

A) BACK PAINTED WITH NEON ON TOP

B) INCASED BULBS

B) VINYLED ON

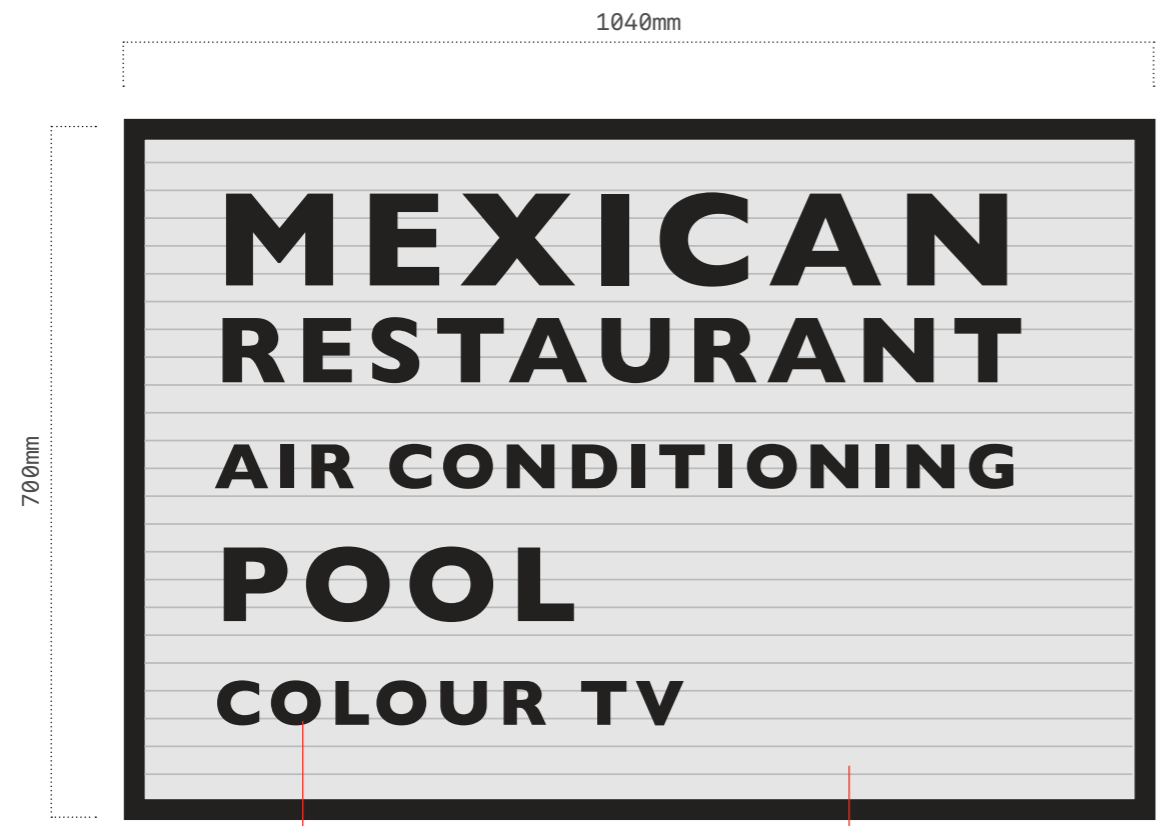


Chilango Camden Town	Drawing Number	Issue Date	Revision		
Fascia Sign	J149_1000	05.08.14	A		

Fascia Info Board

CONTRACTOR TO ADVISE

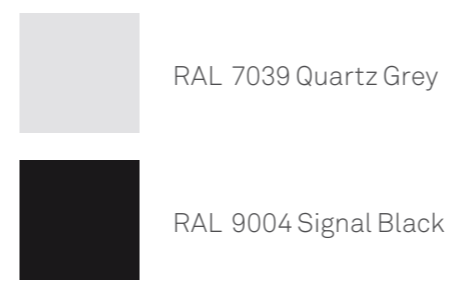
ALL DIMENSIONS IN MILLIMETERS AND TO BE CONFIRMED PRIOR TO PRODUCTION



10MM FRET CUT MDF LETTERS

LIGHTBOX

Depth of sign to be approx 150mm - contractor to advise.



Construction

- Lighbox with graphic vinyl text. Outer edge to be stainless steel and spray painted black to match RAL 9004 Signal Black.
- Letters to be fret cut from MDF 10mm thick and sprayed to match RAL 9004 then glued / pinned directly to lighbox.

Lighting

- Box to internally illuminate white

Fret cut MDF letters to be approx 10mm

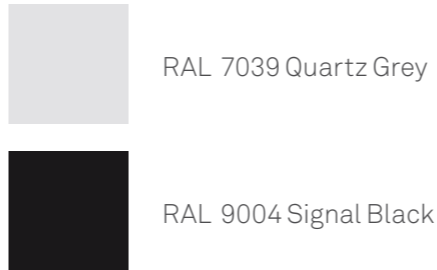
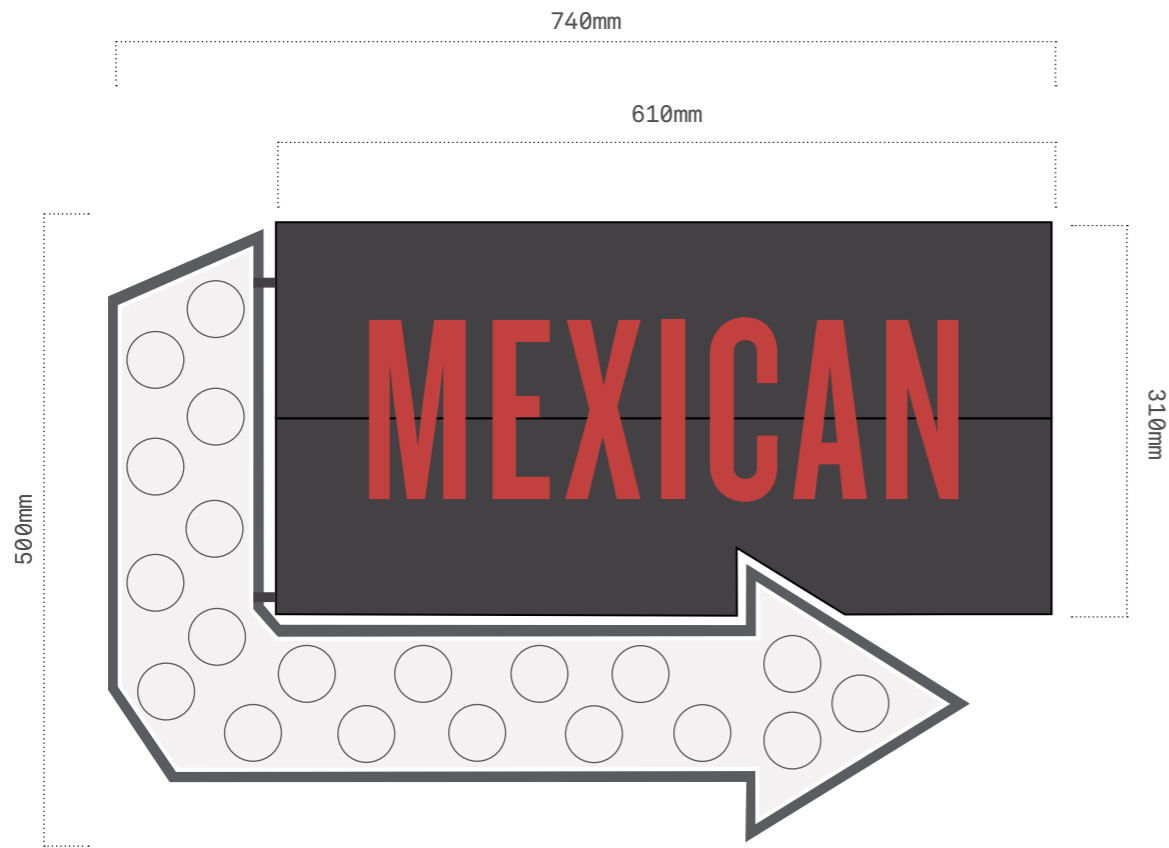


Chilango Camden Town	Drawing Number	Issue Date	Revision		
Fascia Info Board	J149_1001	05.08.14	A		

Projecting Sign

CONTRACTOR TO ADVISE

ALL DIMENSIONS IN MILLIMETERS AND TO BE CONFIRMED PRIOR TO PRODUCTION



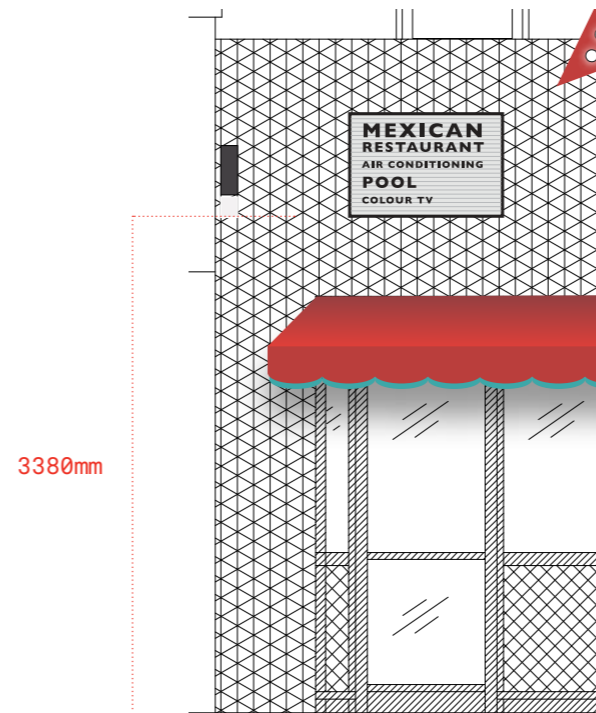
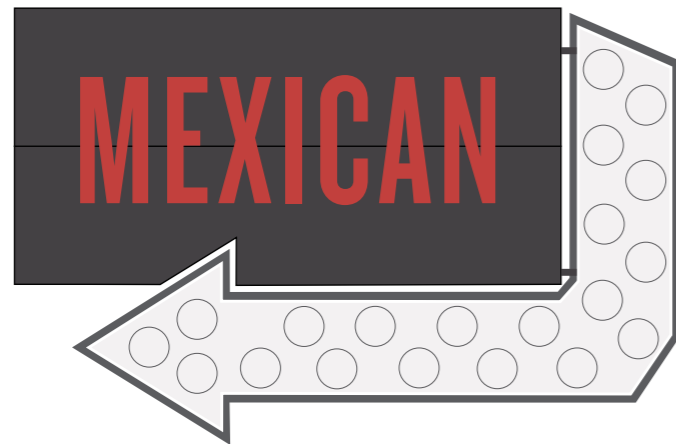
Construction

- Arrow - light box with steel frame powder coated to match RAL 9004 with open face exposed bulbs.
- Double sided.

Lighting

- Mexican to illuminate red. Bulbs to illuminate white,

Reverse



Example of sign taken from previous site



Chilango Camden Town	Drawing Number	Issue Date	Revision		
Projecting Sign	J149_1004	05.08.14	A		