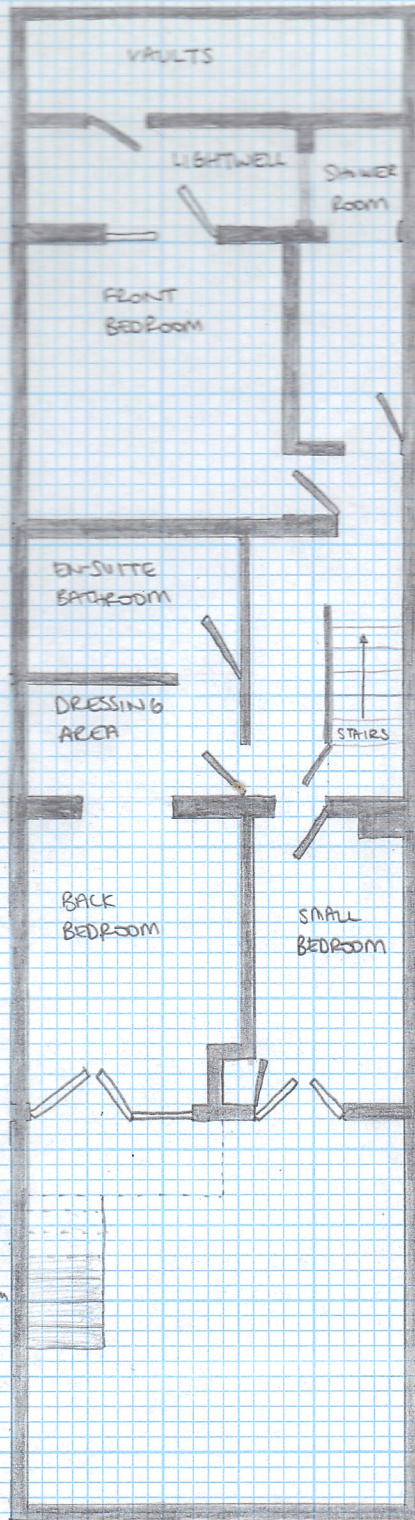


EXISTING:

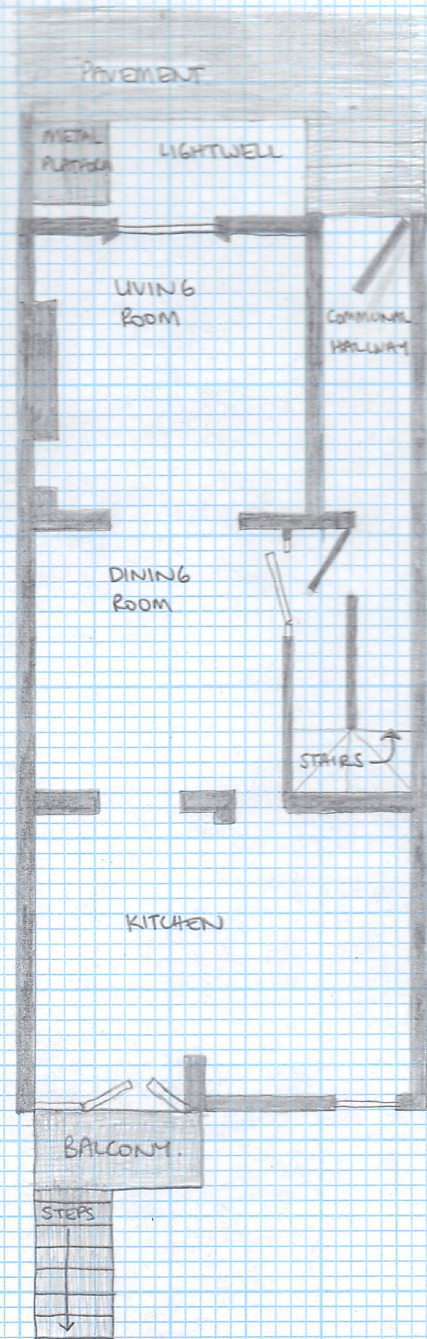
LOWER GROUND FLOOR:

UPPER GROUND FLOOR:

METAL PLATFORM AT STREET LEVEL WITH METAL RAILINGS, WHEELIE BIN AND WOODEN HOUSING BOX.



EXISTING SOLID WOOD + METAL BALCONY WITH SOLID METAL INDUSTRIAL STEPS EXTENDING 3000mm IN TO GARDEN. BALCONY 996mm x 2400mm



(Scale: 1:100)

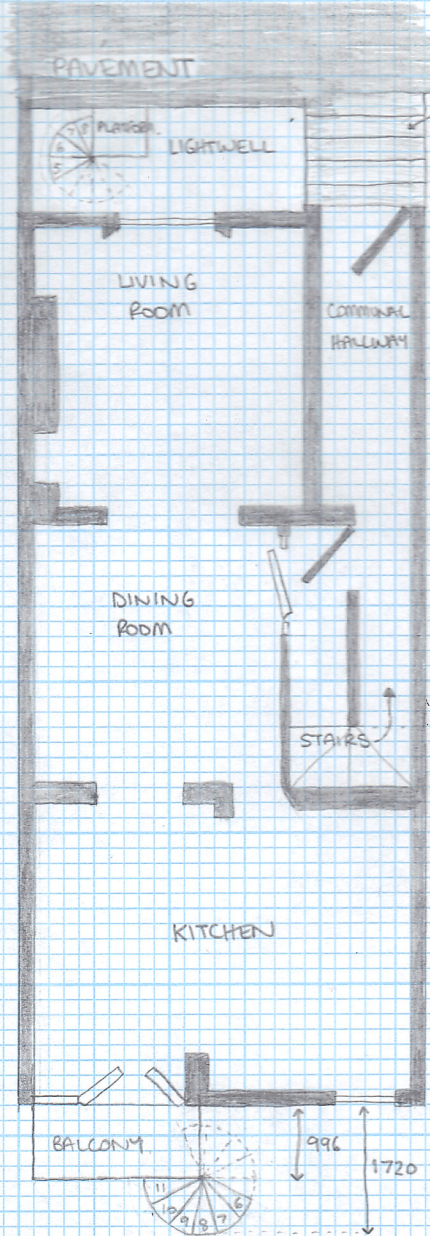
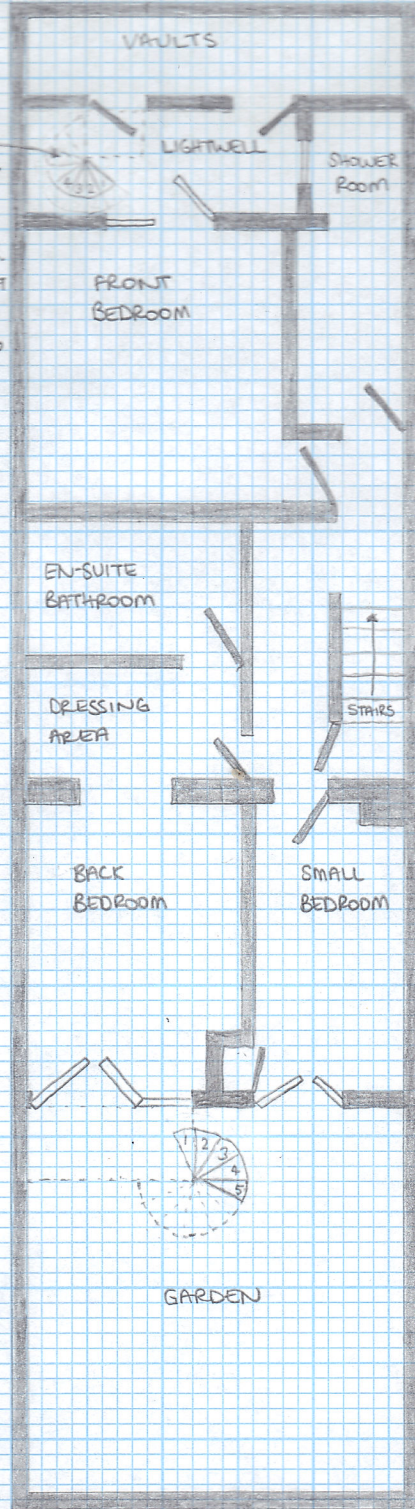
PROPOSED:

LOWER GROUND FLOOR

UPPER GROUND FLOOR

SPIRAL STAIRCASE WITH SMALL PLATFORM AT TOP + 8 STEPS DESCENDING IN TO LIGHTWELL.
 STEPS: 1067mm DIAMETER. CUSTOM-MADE WROUGHT IRON, PAINTED BLACK. GATE AT TOP IN KEEPING WITH FRONT RAILINGS

BALCONY 2400x996 (mm) WITH WROUGHT IRON TREADS AND 11 STEPS DESCENDING IN TO GARDEN.
 STEPS: 1448 DIAMETER, EXTENDING 1720mm FROM HOUSE INTO GARDEN. CUSTOM-MADE WROUGHT IRON



STEPS FROM PAVEMENT TO 5 EGBERT ST.

(Scale 1:100)