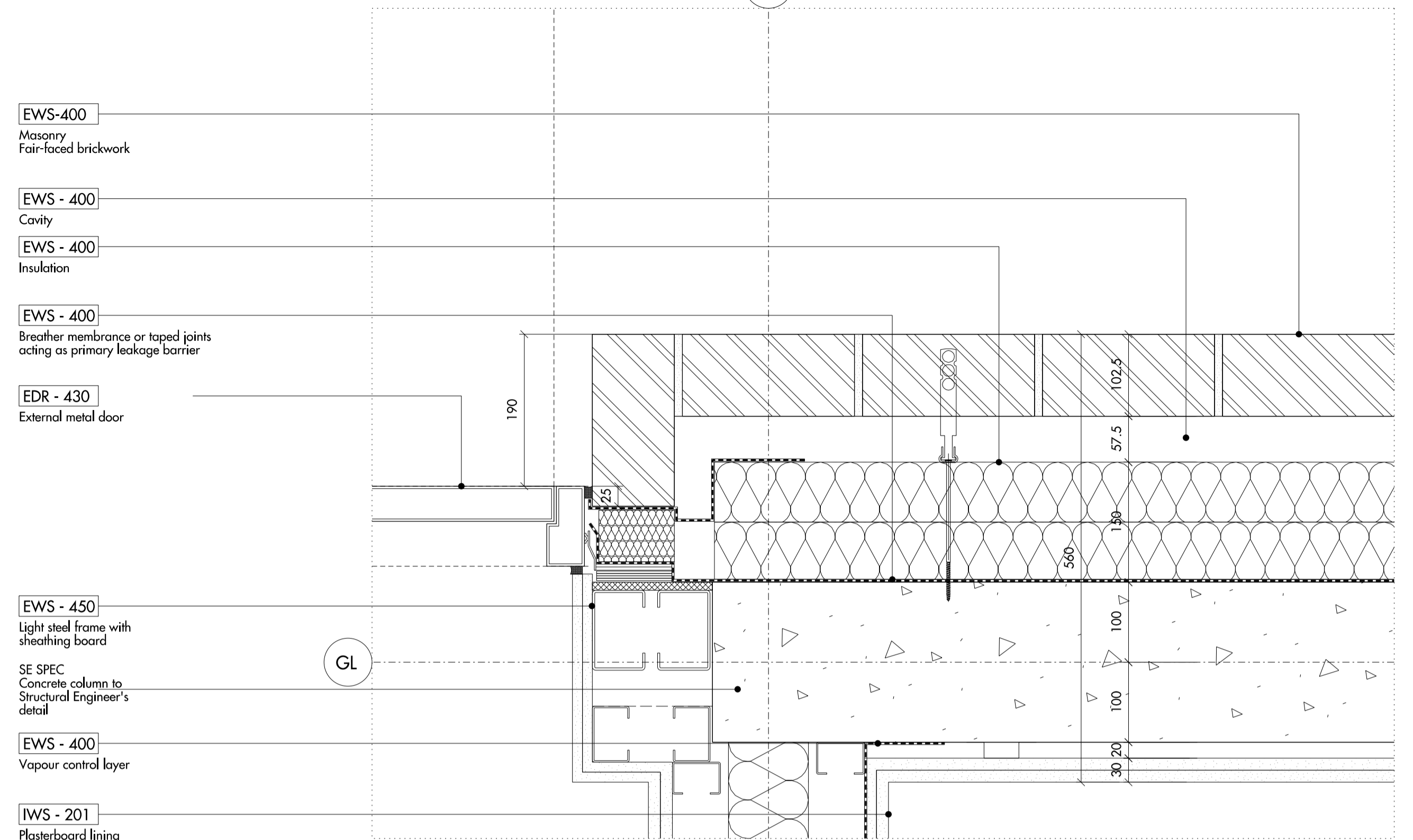


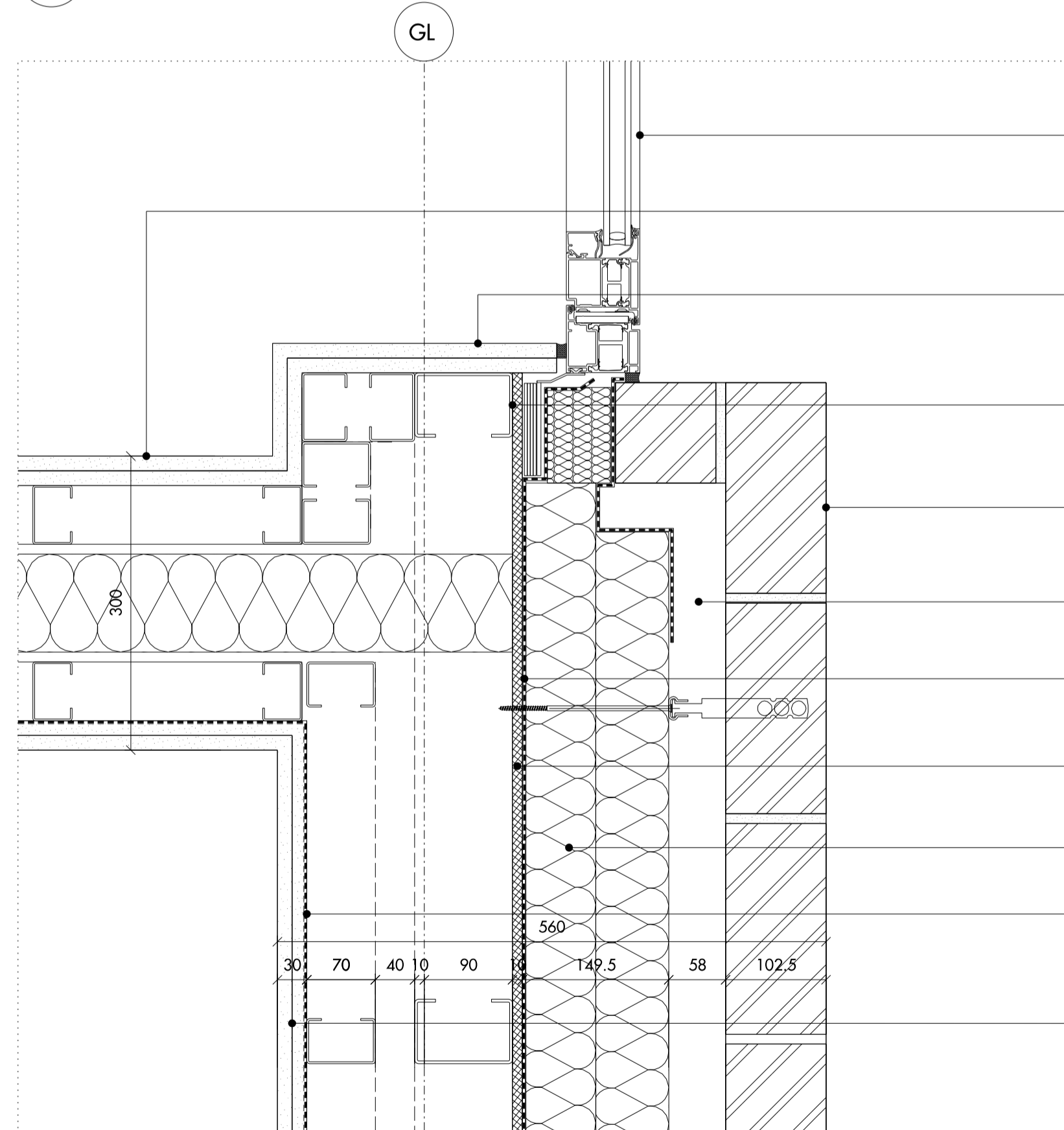
- EWS-400  
Masonry  
Fair-faced brickwork
- EWS - 400  
Cavity
- EWS - 400  
Insulation
- EWS - 400  
Breather membrane or taped joints  
acting as primary leakage barrier
- WIN- 402/403/413  
Window
- EWS - 400  
Acoustic insulation
- EWS - 450  
Light steel frame with  
sheathing board
- EWS - 400  
Vapour control layer
- IWS - 201  
Plasterboard lining

01 PLAN DETAIL



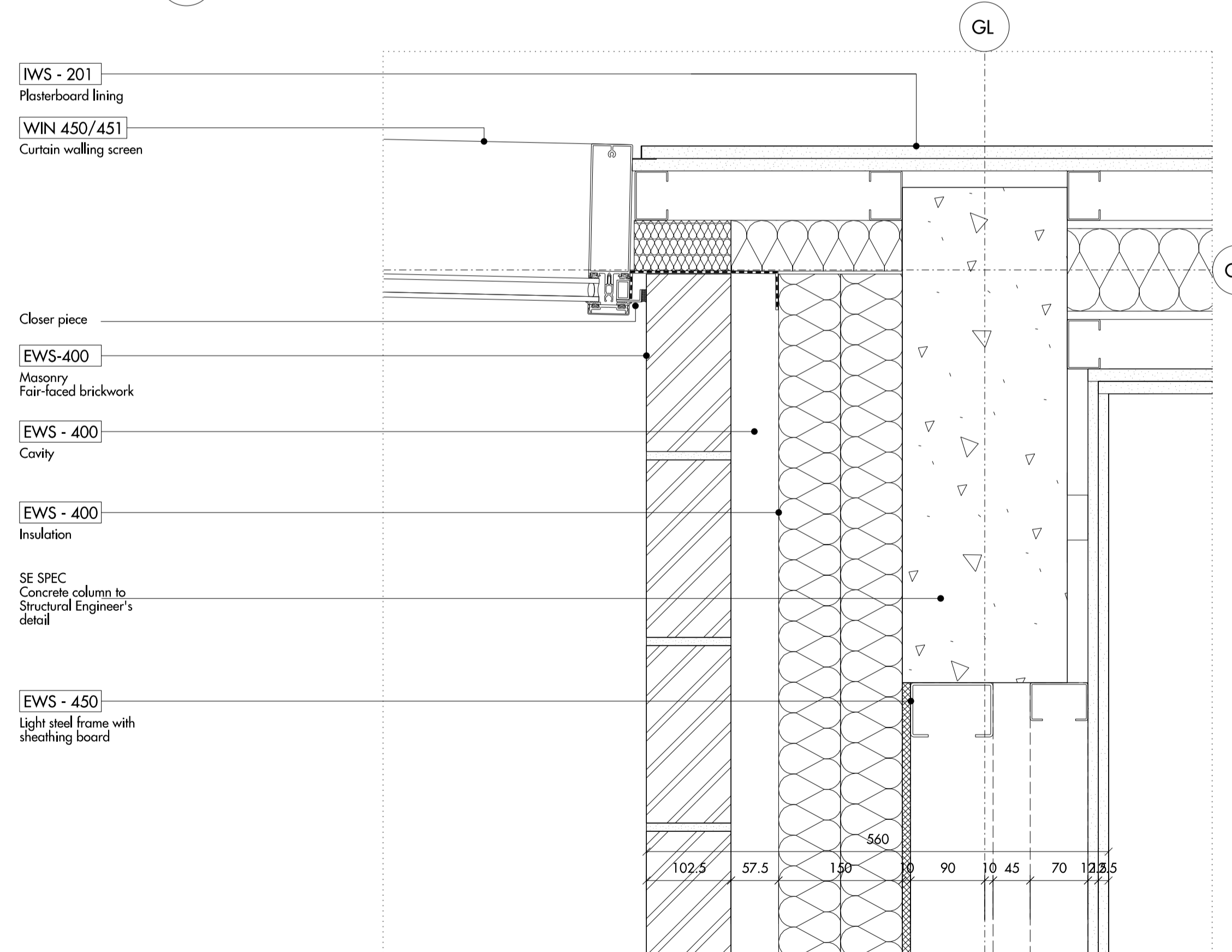
- EWS-400  
Masonry  
Fair-faced brickwork
- EWS - 400  
Cavity
- EWS - 400  
Insulation
- EWS - 400  
Breather membrane or taped joints  
acting as primary leakage barrier
- EDR - 430  
External metal door
- EWS - 450  
Light steel frame with  
sheathing board
- SE SPEC  
Concrete column to  
Structural Engineer's  
detail
- EWS - 400  
Vapour control layer
- IWS - 201  
Plasterboard lining

02 PLAN DETAIL



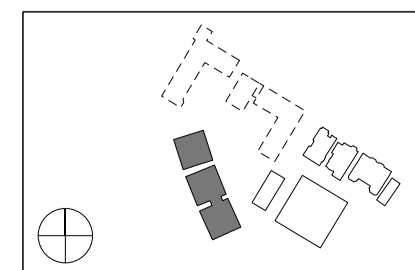
- WIN-420/421/422  
Window
- IWS - 223  
Party wall
- IWS - 201  
Plasterboard lining
- EWS - 450  
Light steel frame with  
sheathing board
- EWS - 400  
Masonry fair-faced  
brickwork
- EWS - 400  
Cavity
- EWS - 400  
Breather membrane or taped joints  
acting as primary leakage barrier
- EWS - 400  
Breather membrane or taped joints  
acting as primary leakage barrier
- EWS - 400  
Insulation
- EWS - 400  
Vapour control layer
- IWS - 201  
Dry lining

03 PLAN DETAIL



- IWS - 201  
Plasterboard lining
- WIN 450/451  
Curtain walling screen
- Claser piece
- EWS-400  
Masonry  
Fair-faced brickwork
- EWS - 400  
Cavity
- EWS - 400  
Insulation
- SE SPEC  
Concrete column to  
Structural Engineer's  
detail
- EWS - 450  
Light steel frame with  
sheathing board

04 PLAN DETAIL

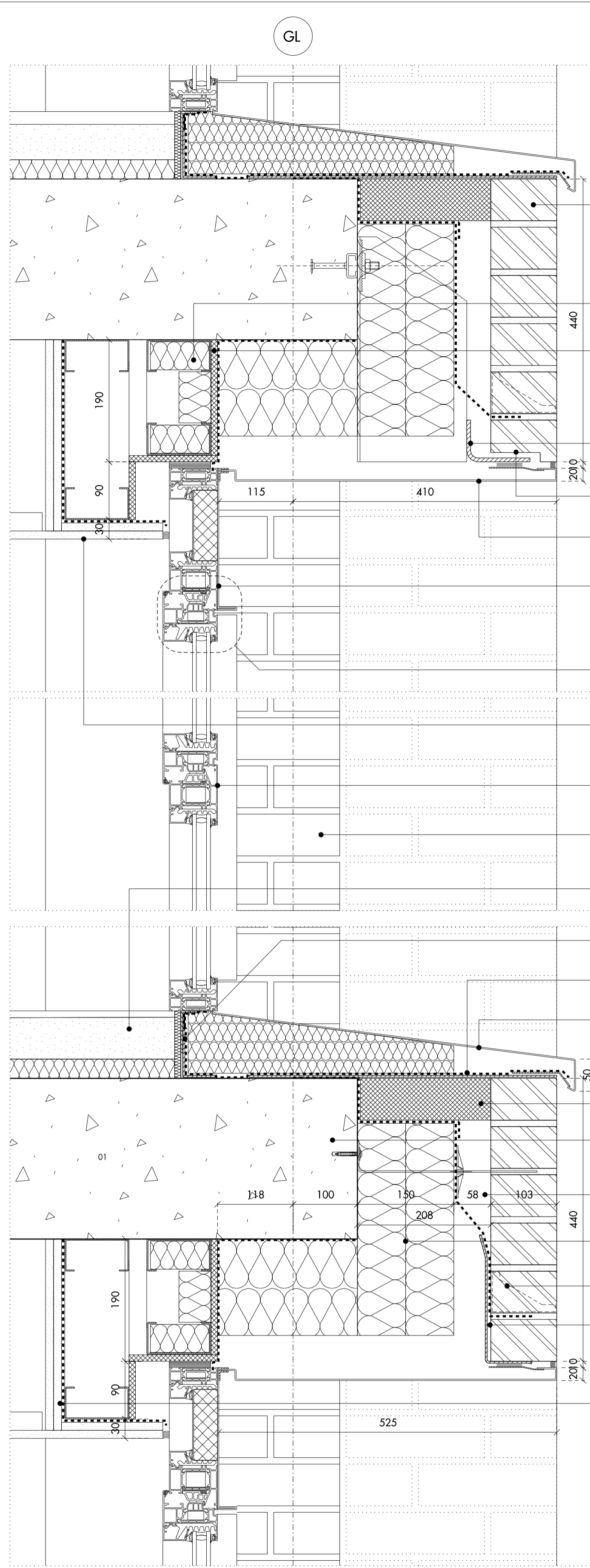


Do not scale from this drawing. Use figured dimensions only. Figured dimensions are in millimetres. All levels are in metres. All dimensions and levels shall be verified on site before proceeding with works. Detailed site survey to be carried out to verify positions and level relationships with site features and ordnance survey. Boundaries are indicative only and are to be verified by others. The architect must be notified of any discrepancy. Where building components are described in the specification as contractor designed, "construction" information relating to those components on this drawing represents design intent only.

REV	DATE	DESCRIPTION	CD
T1	05.08.2014	ISSUED FOR STAGE E	NR

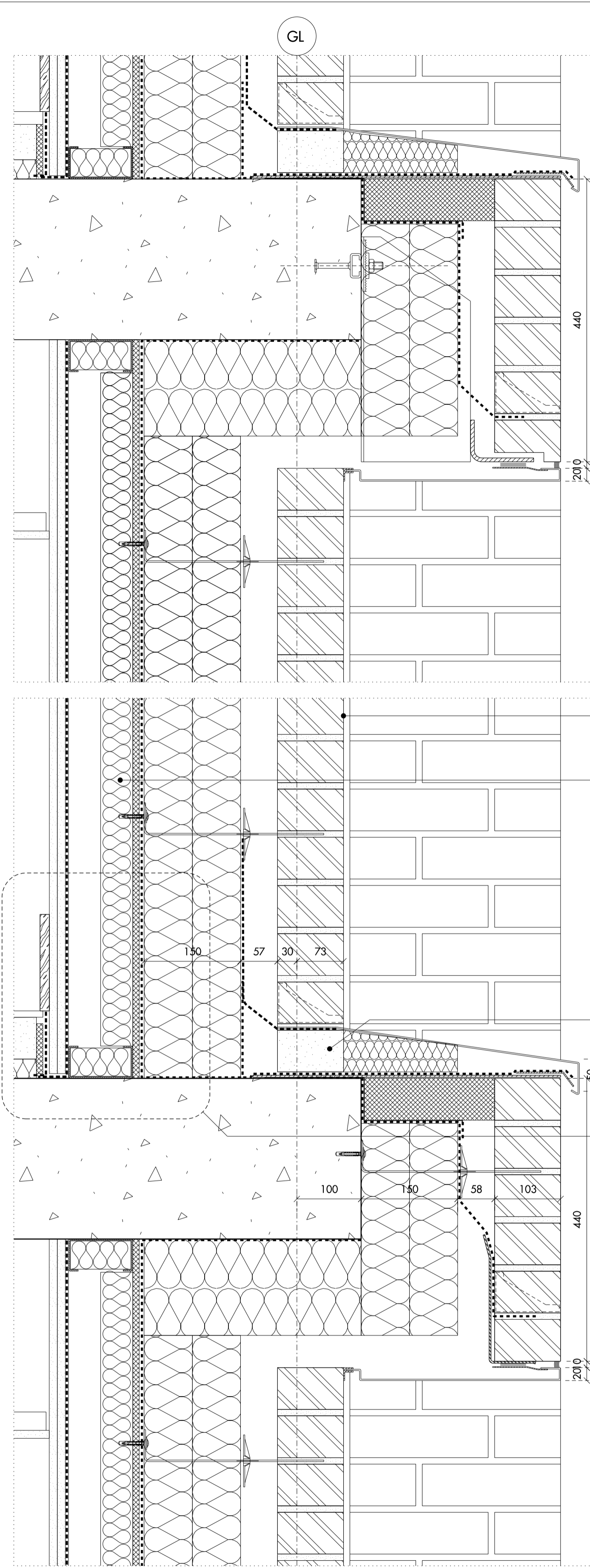
Allies and Morrison  
 85 Southwark Street  
 London SE1 0HX  
 020 7921 0100  
 020 7921 0101  
 info@alliesandmorrison.co.uk  
 telephone  
 facsimile  
 email  
 A&M JOB NO: 809

KIDDERPORE AVENUE - BLOCK F-H  
 EXTERNAL WALL DETAIL  
 PLAN  
 809\_04\_21\_502  
 SCALE: 1:5 @A1 1:10 @A3



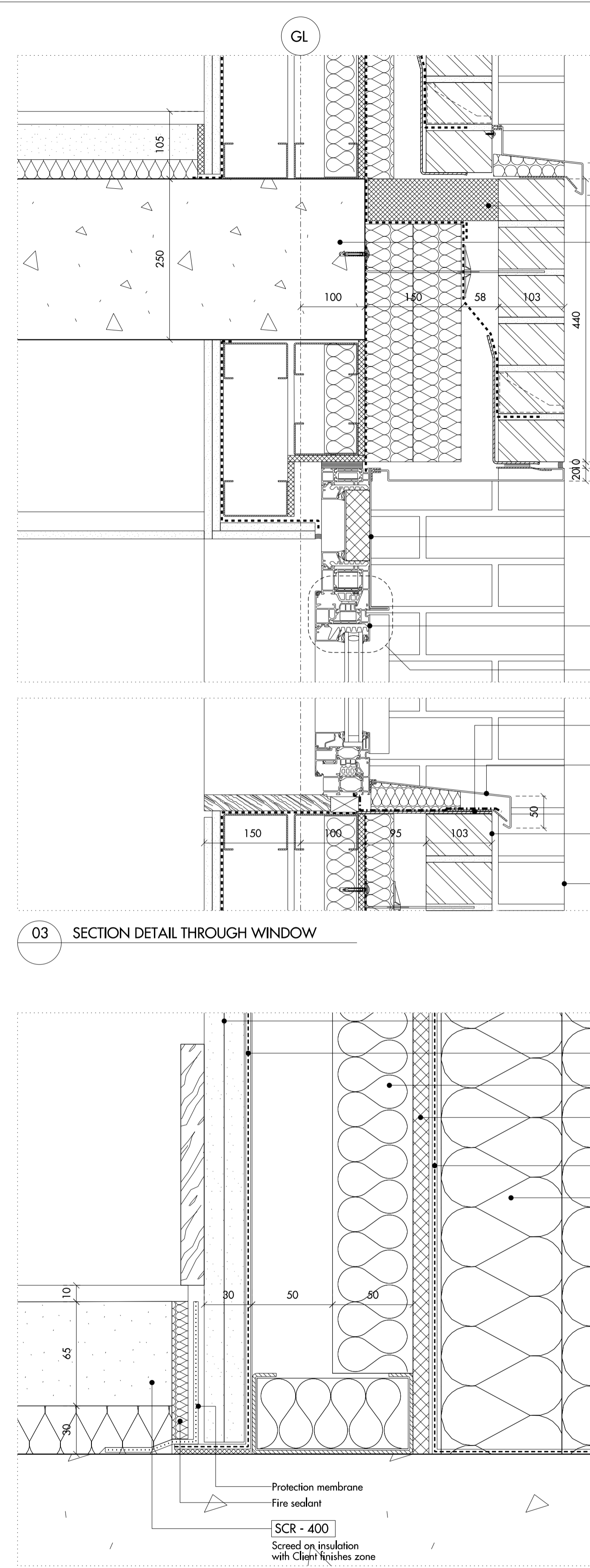
01 SECTION DETAIL THROUGH WINDOW

- EWS - 400  
Masonry  
Fair faced brickwork
- EWS - 400  
Acoustic insulation
- EWS - 400  
Light steel frame system with sheathing board
- SE SPEC  
Masonry Support angle to Structural Engineer's detail
- EWS - 400  
Brick special
- WIN - 400  
Metal pressing to soffit
- WIN - 400  
Over-panel
- 05
- CLG - 200  
Plasterboard ceiling
- WIN - 400  
Window system
- EWS - 400  
Fair faced brickwork reveal (in view)
- SCR - 400
- WIN - 400  
Pair of metal angles
- WIN - 400  
Metal support tray
- WIN - 400  
Metal cill
- EWS - 400  
Horizontal fire stop
- SE SPEC  
Floor slab to Structural Engineer's detail
- EWS - 400  
Cavity
- EWS - 400  
Partial fill cavity insulation
- EWS - 400  
Weephole
- SE SPEC  
Lintel to Structural Engineer's detail
- IWS - 201  
Plasterboard lining



02 SECTION DETAIL THROUGH WALL

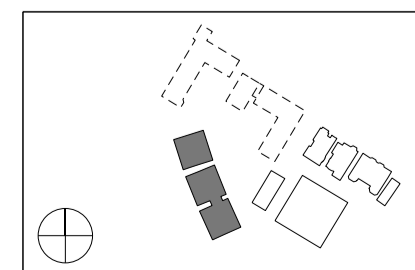
- EWS - 400  
Masonry  
Fair faced brickwork
- EWS - 400  
Acoustic insulation
- EWS - 400  
Thermally insulating and load-bearing block for brickwork
- 04



04 WALL TO SLAB JUNCTION DETAIL  
SCALE 1:2 @ A1

- EWS - 400  
Horizontal fire stop
- SE SPEC  
Floor slab to Structural Engineer's detail
- WIN - 412  
Over-panel
- WIN - 412  
Window system
- 05
- WIN - 412  
Metal support tray
- WIN - 412  
Metal cill
- EWS - 400  
Masonry  
Fair faced brickwork
- EWS - 400  
Fair faced brickwork reveal (in view)
- IWS - 201  
Plasterboard lining
- EWS - 400  
Vapour control layer
- EWS - 400  
Acoustic insulation
- EWS - 400  
Sheathing board on light steel frame system
- EWS - 400  
Breather membrane
- EWS - 400  
Partial fill cavity insulation
- WIN - 400  
Folded metal face panel as part of window system
- SCR - 400  
Screed on insulation with Client finishes zone

05 OVERPANEL DETAIL  
SCALE 1:2 @ A1

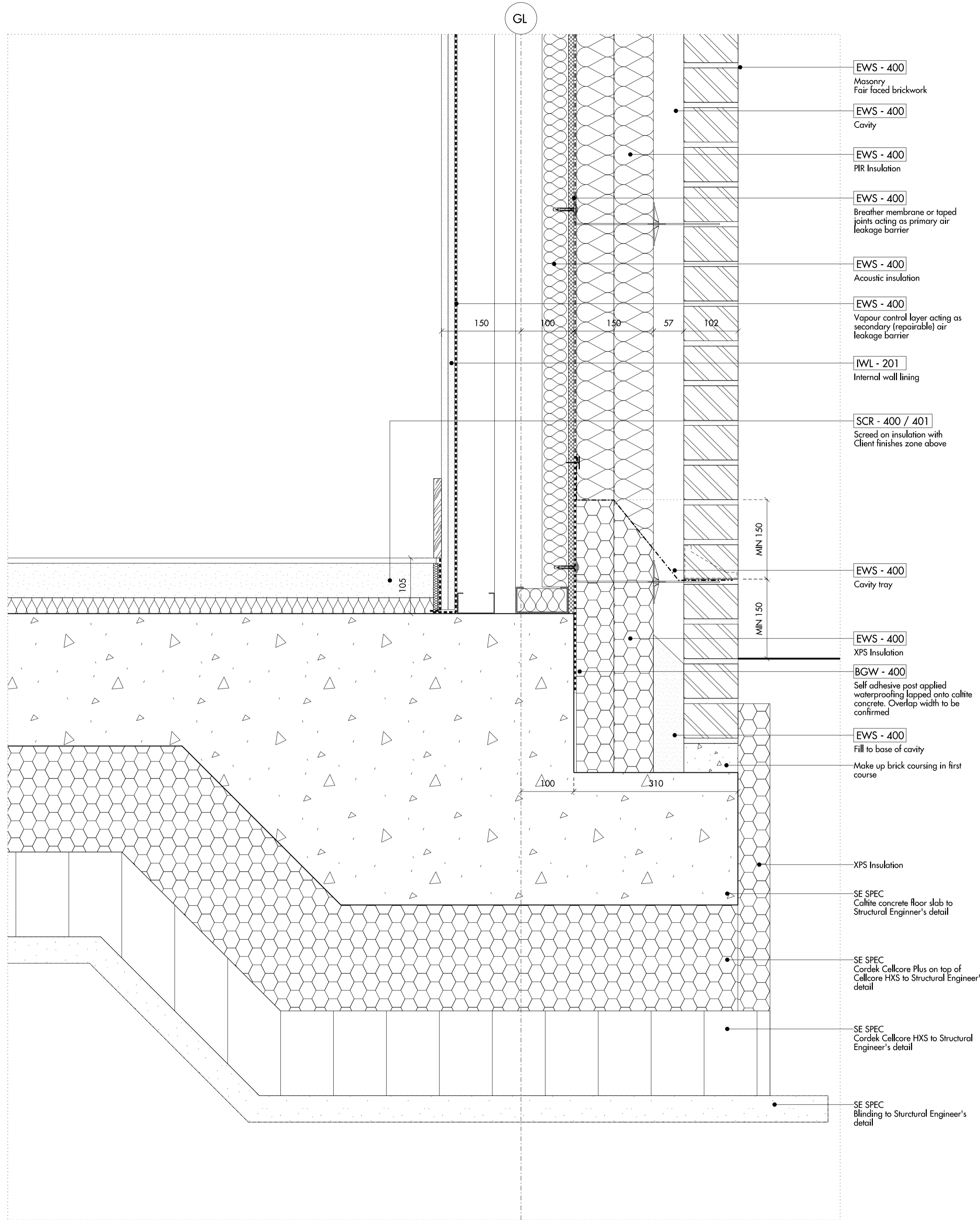


Do not scale from this drawing. Use figured dimensions only. Figured dimensions are in millimetres. All levels are in metres. All dimensions and levels shall be verified on site before proceeding with works. Detailed site survey to be carried out to verify positions and level relationships with site features and ordnance survey. Boundaries are indicative only and are to be verified by others. The architect must be notified of any discrepancy. Where building components are described in the specification as contractor designed, "construction" information relating to those components on this drawing represents design intent only.

REV	DATE	DESCRIPTION	CD
T1	11.07.2014	ISSUED FOR STAGE E	NR
T2	05.08.14	ISSUED FOR STAGE E	NR

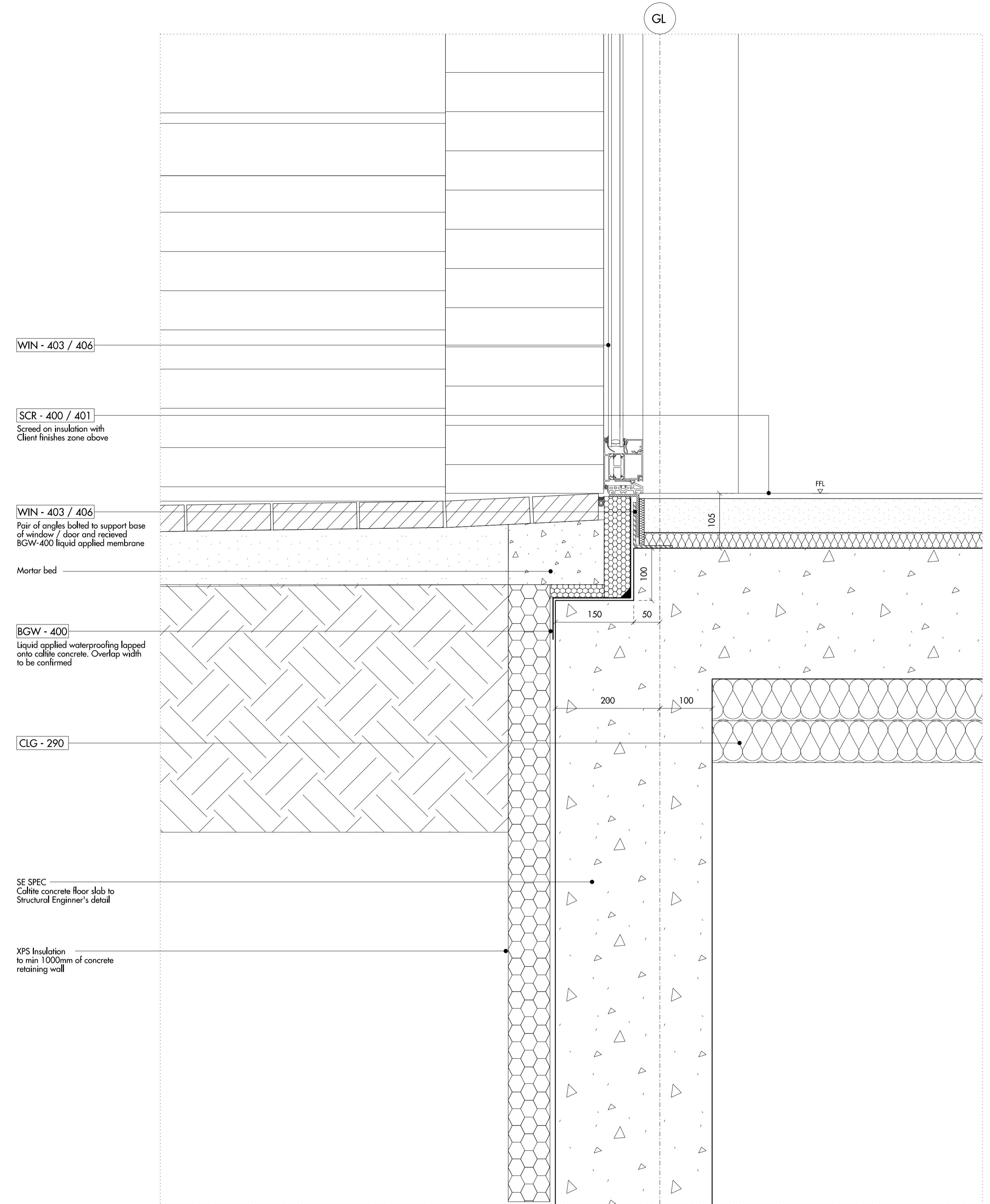
Allies and Morrison  
85 Southwark Street  
London SE1 0HX  
telephone 020 7921 0100  
facsimile 020 7921 0101  
email info@alliesandmorrisson.co.uk  
A&M JOB NO: 809

KIDDERPORE AVENUE - BLOCK F-H  
EXTERNAL WALL DETAIL  
SECTION  
809\_04\_21\_550  
SCALE: 1:5 @A1 1:10 @A3



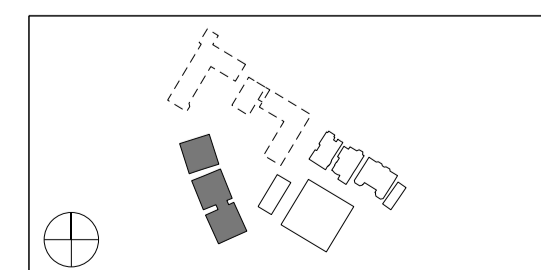
- EWS - 400  
Masonry  
Fair faced brickwork
- EWS - 400  
Cavity
- EWS - 400  
PIR Insulation
- EWS - 400  
Breather membrane or taped joints acting as primary air leakage barrier
- EWS - 400  
Acoustic insulation
- EWS - 400  
Vapour control layer acting as secondary (repairable) air leakage barrier
- IWL - 201  
Internal wall lining
- SCR - 400 / 401  
Screed on insulation with Client finishes zone above
- EWS - 400  
Cavity tray
- EWS - 400  
XPS Insulation
- BGW - 400  
Self adhesive post applied waterproofing lapped onto caltite concrete. Overlap width to be confirmed
- EWS - 400  
Fill to base of cavity
- Make up brick coursing in first course
- XPS Insulation
- SE SPEC  
Caltite concrete floor slab to Structural Engineer's detail
- SE SPEC  
Cordek Calcore Plus on top of Calcore HXS to Structural Engineer's detail
- SE SPEC  
Cordek Calcore HXS to Structural Engineer's detail
- SE SPEC  
Blinding to Structural Engineer's detail

01 DETAIL SECTION



- WIN - 403 / 406
- SCR - 400 / 401  
Screed on insulation with Client finishes zone above
- WIN - 403 / 406  
Pair of angles bolted to support base of window / door and received BGW-400 liquid applied membrane
- Mortar bed
- BGW - 400  
Liquid applied waterproofing lapped onto caltite concrete. Overlap width to be confirmed
- CLG - 290
- SE SPEC  
Caltite concrete floor slab to Structural Engineer's detail
- XPS Insulation to min 1000mm of concrete retaining wall

02 DETAIL SECTION



Do not scale from this drawing. Use figured dimensions only. Figured dimensions are in millimetres. All levels are in metres. All dimensions and levels shall be verified on site before proceeding with works. Detailed site survey to be carried out to verify positions and level relationships with site features and ordinance survey. Boundaries are indicative only and are to be verified by others. The architect must be notified of any discrepancy. Where building components are described in the specification as contractor designed, "construction" information relating to those components on this drawing represents design intent only.

REV	DATE	DESCRIPTION	CKD
T1	11.07.2014	ISSUED FOR STAGE E	NR
T2	05.08.2014	ISSUED FOR STAGE E	NR

Allies and Morrison  
85 Southwark Street  
London SE1 0HX  
020 7921 0100  
020 7921 0101  
info@alliesandmorrison.co.uk  
A&M JOB NO: 809

KIDDERPORE AVENUE - BLOCK F-H  
TYPICAL EXTERNAL WALL DETAIL  
PERIMETER SECTIONS  
809\_04\_21\_560  
SCALE: 1:5 @A1 1:10 @A3