

EXTERNAL WALL TYPES

- | | | | | | |
|--|-----------|--|--|-----------|---|
| | EWS - 200 | External brickwork masonry insulated cavity walling on light steel framed backing wall | | EWS - 206 | Masonry blockwork insulated cavity walling on concrete backing wall |
| | EWS - 201 | External brickwork masonry un-insulated cavity walling on blockwork frame | | EWS - 207 | External masonry brickwork insulated cavity walling on concrete backing wall |
| | EWS - 202 | External brickwork masonry un-insulated twin cavity walling on light steel framed backing wall | | EWS - 230 | External patterned metal rainscreen cladding on light steel framed backing wall |
| | EWS - 203 | EWS - 204 External brickwork masonry un-insulated cavity walling on concrete wall | | EWS - 231 | External metal rainscreen cladding to penthouse and upper floor |
| | EWS - 204 | Wall insulation to solid masonry blockwork walling | | EWS - 232 | Fins and shelves to penthouse |
| | EWS - 205 | Masonry blockwork insulated cavity wall to car park | | EWS - 233 | Metal rainscreen to penthouse parapet wall |

KEY:

- WINDOW TYPES
- WIN - 240

EXTERNAL DOOR KEY:

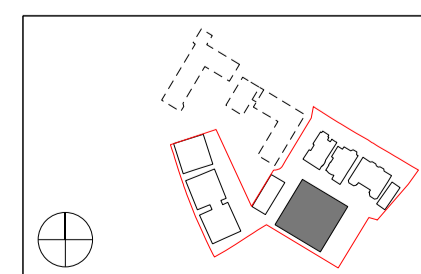
- EDR - 210 External metal boarded single leaf door
- EDR - 220 External metal boarded substation door system
- EDR - 221 Internal metal boarded double doors

LOUVRE KEY:

- LVR - 200 External metal louvres
- LVR - 201 Internal metal louvres

NOTES:

- 1) Drawings to be read in conjunction with:
 - 06 series GA drawings
 - 21 series drawings
 - Window schedule
 - Window specification
- 2) MVHR unit requires two air bricks per flat. For location refer to GA's and details
- 3) Movement joint required every 6m on the inner face of the parapet wall.
- 4) Refer to structural engineer drawings and specification for all masonry restraint items such as masonry angles, brick ties, wall starters, reinforcement and lintels.
- 5) Masonry restraint support angles to return in recessed balcony



Do not scale from this drawing. Use figured dimensions only. Figured dimensions are in millimetres. All levels are in metres. All dimensions and levels shall be verified on site before proceeding with works. Detailed site survey to be carried out to verify positions and level relationships with site features and ordnance survey. Boundaries are indicative only and are to be verified by others. The architect must be notified of any discrepancy. Where building components are described in the specification as contractor designed, "construction" information relating to those components on this drawing represents design intent only.

REV	DATE	DESCRIPTION	CKD
T1	11.07.2014	ISSUED FOR STAGE E	NR
T2	05.08.14	ISSUED FOR STAGE E	

Allies and Morrison
85 Southwark Street
London SE1 0HX
020 7921 0100
020 7921 0101
info@alliesandmorrison.co.uk

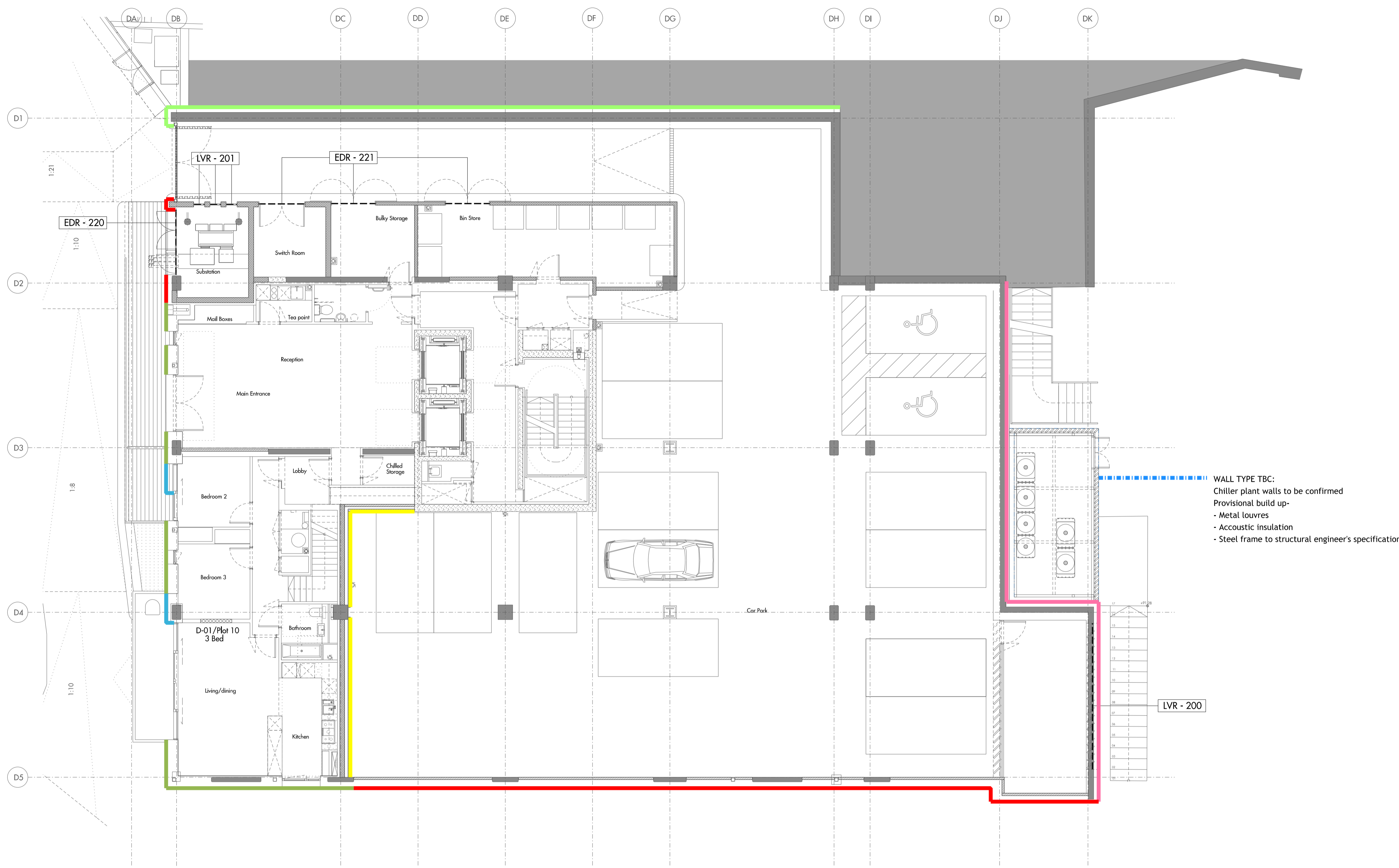
A&M JOB NO: 809

KIDDERPORE AVENUE : BLOCK D
LEVEL -02
EXTERNAL WALL SCOPE
809_02_21_100

SCALE 1:100@A1 1:200@A3

T2

Revision



01 BLOCK D - LEVEL -01
SCALE 1:100

EXTERNAL WALL TYPES

- | | | | |
|-------------|--|-------------|---|
| — EWS - 200 | External brickwork masonry insulated cavity walling on light steel framed backing wall | — EWS - 206 | Masonry blockwork insulated cavity walling on concrete backing wall |
| — EWS - 201 | External brickwork masonry un-insulated cavity walling on blockwork frame | — EWS - 207 | External masonry brickwork insulated cavity walling on concrete backing wall |
| — EWS - 202 | External brickwork masonry un-insulated twin cavity walling on light steel framed backing wall | — EWS - 230 | External patterned metal rainscreen cladding on light steel framed backing wall |
| — EWS - 203 | EWS - 204 External brickwork masonry un-insulated cavity walling on concrete wall | — EWS - 231 | External metal rainscreen cladding to penthouse and upper floor |
| — EWS - 204 | Wall insulation to solid masonry blockwork walling | — EWS - 232 | Fins and shelves to penthouse |
| — EWS - 205 | Masonry blockwork insulated cavity wall to car park | — EWS - 233 | Metal rainscreen to penthouse parapet wall |

KEY:
WINDOW TYPES
WIN - 240

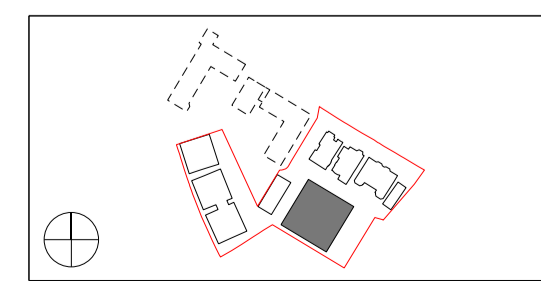
EXTERNAL DOOR KEY:

- EDR - 210 External metal louvered single leaf door
- EDR - 220 External metal louvered substation door system
- EDR - 221 Internal metal louvered double doors

LOUVRE KEY:

- LVR - 200 External metal louvres
- LVR - 201 Internal metal louvres

- NOTES:
- 1) Drawings to be read in conjunction with:
 - 06 series GA drawings
 - 21 series drawings
 - Window schedule
 - Window specification
 - 2) MVHR unit requires two air bricks per flat. For location refer to GA's and details
 - 3) Movement joint required every 6m on the inner face of the parapet wall.
 - 4) Refer to structural engineer drawings and specification for all masonry restraint items such as masonry angles, brick ties, wall starters, reinforcement and lintels.
 - 5) Masonry restraint support angles to return in recessed balcony

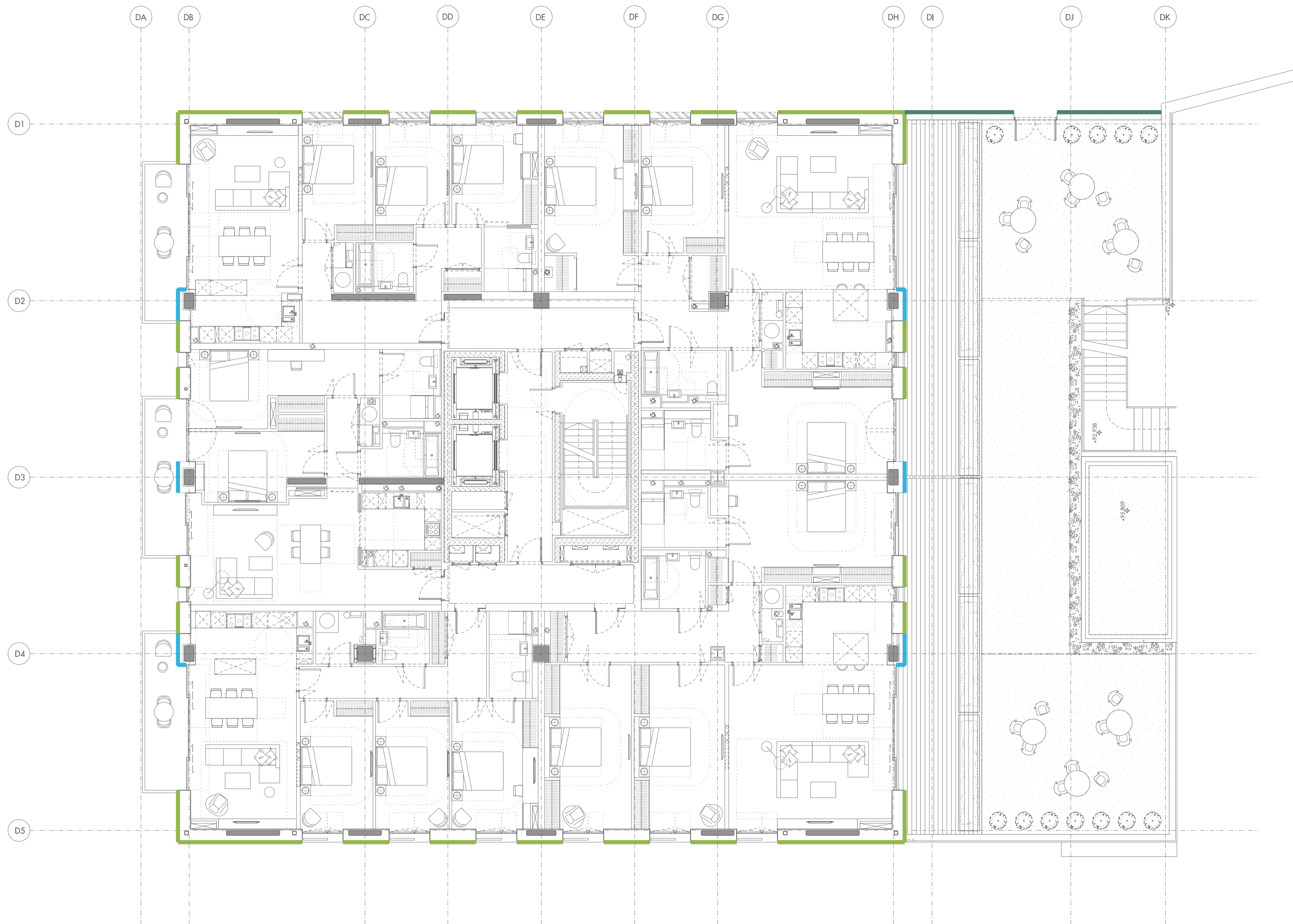


Do not scale from this drawing. Use figured dimensions only. Figured dimensions are in millimetres. All levels are in metres. All dimensions and levels shall be verified on site before proceeding with works. Detailed site survey to be carried out to verify positions and level relationships with site features and ordnance survey. Boundaries are indicative only and are to be verified by others. The architect must be notified of any discrepancy. Where building components are described in the specification as contractor designed, "construction" information relating to those components on this drawing represents design intent only.

REV	DATE	DESCRIPTION	CKD
T1	11.07.2014	ISSUED FOR STAGE E	NR
T2	05.08.14	ISSUED FOR STAGE E	NR

Allies and Morrison
85 Southwark Street
London SE1 0HX
020 7921 0100
020 7921 0101
info@alliesandmorrison.co.uk
A&M JOB NO: 809

KIDDERPORE AVENUE : BLOCK D
LEVEL -01
EXTERNAL WALL SCOPE
809_02_21_101
SCALE 1:100@A1 1:200@A3



01 BLOCK D - LEVEL 00
SCALE 1:100

EXTERNAL WALL TYPES

- | | | | | | |
|--|-----------|--|--|-----------|---|
| | EWS - 200 | External brickwork masonry insulated cavity walling on light steel framed backing wall | | EWS - 206 | Masonry blockwork insulated cavity walling on concrete backing wall |
| | EWS - 201 | External brickwork masonry un-insulated cavity walling on blockwork frame | | EWS - 207 | External masonry brickwork insulated cavity walling on concrete backing wall |
| | EWS - 202 | External brickwork masonry un-insulated twin cavity walling on light steel framed backing wall | | EWS - 230 | External patterned metal rainscreen cladding on light steel framed backing wall |
| | EWS - 203 | EWS - 204 External brickwork masonry un-insulated cavity walling on concrete wall | | EWS - 231 | External metal rainscreen cladding to penthouse and upper floor |
| | EWS - 204 | Wall insulation to solid masonry blockwork walling | | EWS - 232 | Fins and shelves to penthouse |
| | EWS - 205 | Masonry blockwork insulated cavity wall to car park | | EWS - 233 | Metal rainscreen to penthouse parapet wall |

KEY:
WINDOW TYPES

WIN - 240

EXTERNAL DOOR KEY:

External metal louvered single leaf door

External metal louvered substation door system

Internal metal louvered double doors

LOUVRE KEY:

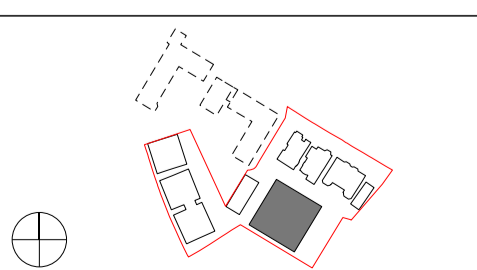
External metal louvres

Internal metal louvres

- NOTES:
- 1) Drawings to be read in conjunction with:
 - 06 series GA drawings
 - 21 series drawings
 - Window schedule
 - Window specification
 - 2) MVHR unit requires two air bricks per flat. For location refer to GA's and details
 - 3) Movement joint required every 6m on the inner face of the parapet wall.
 - 4) Refer to structural engineer drawings and specification for all masonry restraint items such as masonry angles, brick ties, wall starters, reinforcement and lintels.
 - 5) Masonry restraint support angles to return in recessed balcony

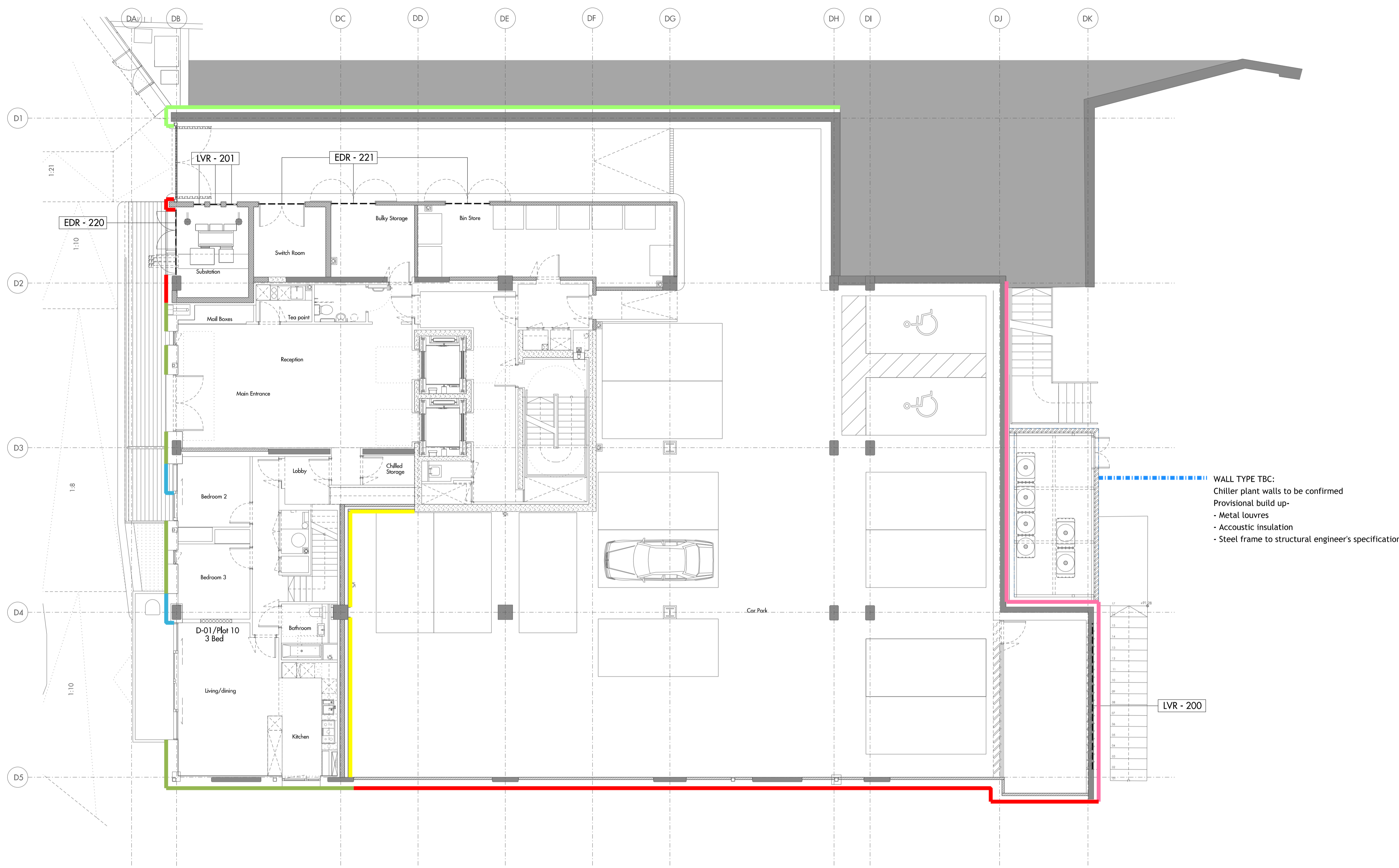
REV	DATE	DESCRIPTION	CKD
T1	11.07.2014	ISSUED FOR STAGE E	NR
T2	05.08.2014	ISSUED FOR STAGE E	NR

Do not scale from this drawing. Use figured dimensions only. Figured dimensions are in millimetres. All levels are in metres. All dimensions and levels shall be verified on site before proceeding with works. Detailed site survey to be carried out to verify positions and level relationships with site features and ordnance survey. Boundaries are indicative only and are to be verified by others. The architect must be notified of any discrepancy. Where building components are described in the specification as contractor designed, "construction" information relating to those components on this drawing represents design intent only.



Allies and Morrison
85 Southwark Street
London SE1 0HX
020 7921 0100
020 7921 0101
info@alliesandmorrison.co.uk
A&M JOB NO: 809

KIDDERPORE AVENUE : BLOCK D
LEVEL 00
EXTERNAL WALL SCOPE
809_02_21_102
SCALE 1:100@A1 1:200@A3



01 BLOCK D - LEVEL -01
SCALE 1:100

EXTERNAL WALL TYPES

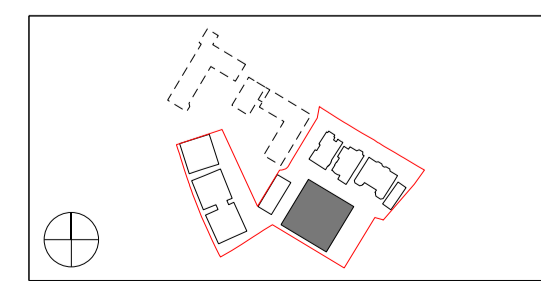
- | | |
|---|--|
| <ul style="list-style-type: none"> — EWS - 200 External brickwork masonry insulated cavity walling on light steel framed backing wall — EWS - 201 External brickwork masonry un-insulated cavity walling on blockwork frame — EWS - 202 External brickwork masonry un-insulated twin cavity walling on light steel framed backing wall — EWS - 203 EWS - 204 External brickwork masonry un-insulated cavity walling on concrete wall — EWS - 204 Wall insulation to solid masonry blockwork walling — EWS - 205 Masonry blockwork insulated cavity wall to car park | <ul style="list-style-type: none"> — EWS - 206 Masonry blockwork insulated cavity walling on concrete backing wall — EWS - 207 External masonry brickwork insulated cavity walling on concrete backing wall — EWS - 230 External patterned metal rainscreen cladding on light steel framed backing wall — EWS - 231 External metal rainscreen cladding to penthouse and upper floor - - - EWS - 232 Fins and shelves to penthouse - - - EWS - 233 Metal rainscreen to penthouse parapet wall |
|---|--|

KEY:
WINDOW TYPES
■ WIN - 240

EXTERNAL DOOR KEY:
EDR - 210 External metal louvered single leaf door
EDR - 220 External metal louvered substation door system
EDR - 221 Internal metal louvered double doors

LOUVRE KEY:
LVR - 200 External metal louvres
LVR - 201 Internal metal louvres

- NOTES:
- 1) Drawings to be read in conjunction with:
 - 06 series GA drawings
 - 21 series drawings
 - Window schedule
 - Window specification
 - 2) MVHR unit requires two air bricks per flat. For location refer to GA's and details
 - 3) Movement joint required every 6m on the inner face of the parapet wall.
 - 4) Refer to structural engineer drawings and specification for all masonry restraint items such as masonry angles, brick ties, wall starters, reinforcement and lintels.
 - 5) Masonry restraint support angles to return in recessed balcony

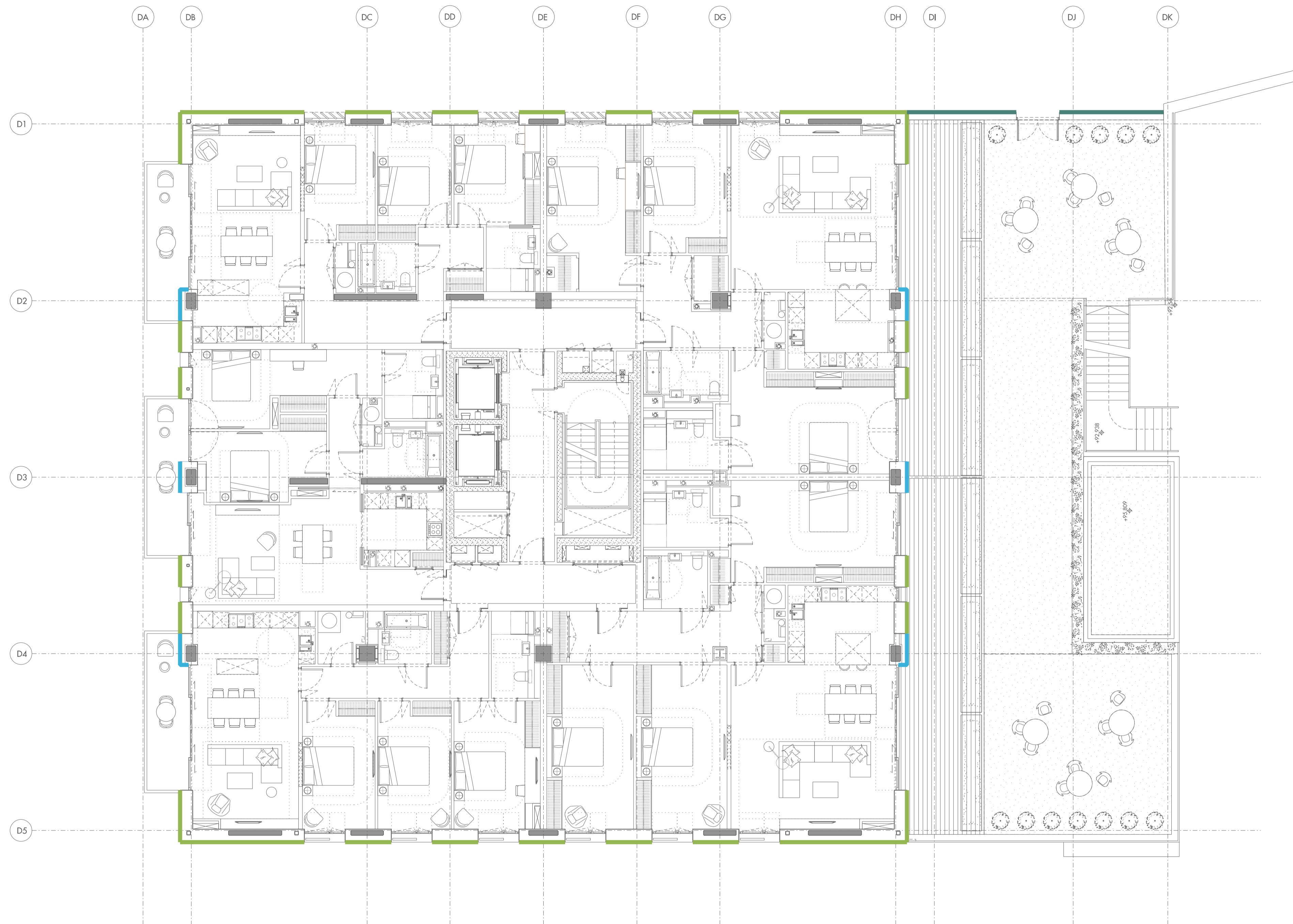


Do not scale from this drawing. Use figured dimensions only. Figured dimensions are in millimetres. All levels are in metres. All dimensions and levels shall be verified on site before proceeding with works. Detailed site survey to be carried out to verify positions and level relationships with site features and ordnance survey. Boundaries are indicative only and are to be verified by others. The architect must be notified of any discrepancy. Where building components are described in the specification as contractor designed, "construction" information relating to those components on this drawing represents design intent only.

REV	DATE	DESCRIPTION	CKD
T1	11.07.2014	ISSUED FOR STAGE E	NR
T2	05.08.14	ISSUED FOR STAGE E	NR

Allies and Morrison
 85 Southwark Street
 London SE1 0HX
 telephone 020 7921 0100
 facsimile 020 7921 0101
 email info@alliesandmorrison.co.uk
 A&M JOB NO: 809

KIDDERPORE AVENUE : BLOCK D
 LEVEL -01
 EXTERNAL WALL SCOPE
 809_02_21_101
 SCALE 1:100@A1 1:200@A3



01 BLOCK D - LEVEL 00
SCALE 1:100

EXTERNAL WALL TYPES

- | | | | | | |
|--|-----------|--|--|-----------|---|
| | EWS - 200 | External brickwork masonry insulated cavity walling on light steel framed backing wall | | EWS - 206 | Masonry blockwork insulated cavity walling on concrete backing wall |
| | EWS - 201 | External brickwork masonry un-insulated cavity walling on blockwork frame | | EWS - 207 | External masonry brickwork insulated cavity walling on concrete backing wall |
| | EWS - 202 | External brickwork masonry un-insulated twin cavity walling on light steel framed backing wall | | EWS - 230 | External patterned metal rainscreen cladding on light steel framed backing wall |
| | EWS - 203 | EWS - 204 External brickwork masonry un-insulated cavity walling on concrete wall | | EWS - 231 | External metal rainscreen cladding to penthouse and upper floor |
| | EWS - 204 | Wall insulation to solid masonry blockwork walling | | EWS - 232 | Fins and shelves to penthouse |
| | EWS - 205 | Masonry blockwork insulated cavity wall to car park | | EWS - 233 | Metal rainscreen to penthouse parapet wall |

KEY:

- WINDOW TYPES
- WIN - 240

EXTERNAL DOOR KEY:

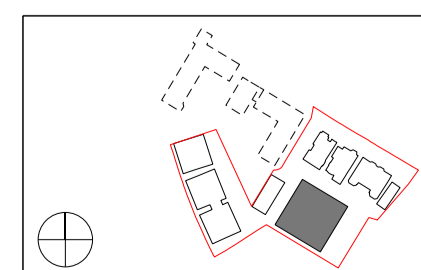
- External metal louvered single leaf door
- External metal louvered substation door system
- Internal metal louvered double doors

LOUVRE KEY:

- External metal louvres
- Internal metal louvres

NOTES:

- 1) Drawings to be read in conjunction with:
 - 06 series GA drawings
 - 21 series drawings
 - Window schedule
 - Window specification
- 2) MVHR unit requires two air bricks per flat. For location refer to GA's and details
- 3) Movement joint required every 6m on the inner face of the parapet wall.
- 4) Refer to structural engineer drawings and specification for all masonry restraint items such as masonry angles, brick ties, wall starters, reinforcement and lintels.
- 5) Masonry restraint support angles to return in recessed balcony



Do not scale from this drawing. Use figured dimensions only. Figured dimensions are in millimetres. All levels are in metres. All dimensions and levels shall be verified on site before proceeding with works. Detailed site survey to be carried out to verify positions and level relationships with site features and ordnance survey. Boundaries are indicative only and are to be verified by others. The architect must be notified of any discrepancy. Where building components are described in the specification as contractor designed, "construction" information relating to those components on this drawing represents design intent only.

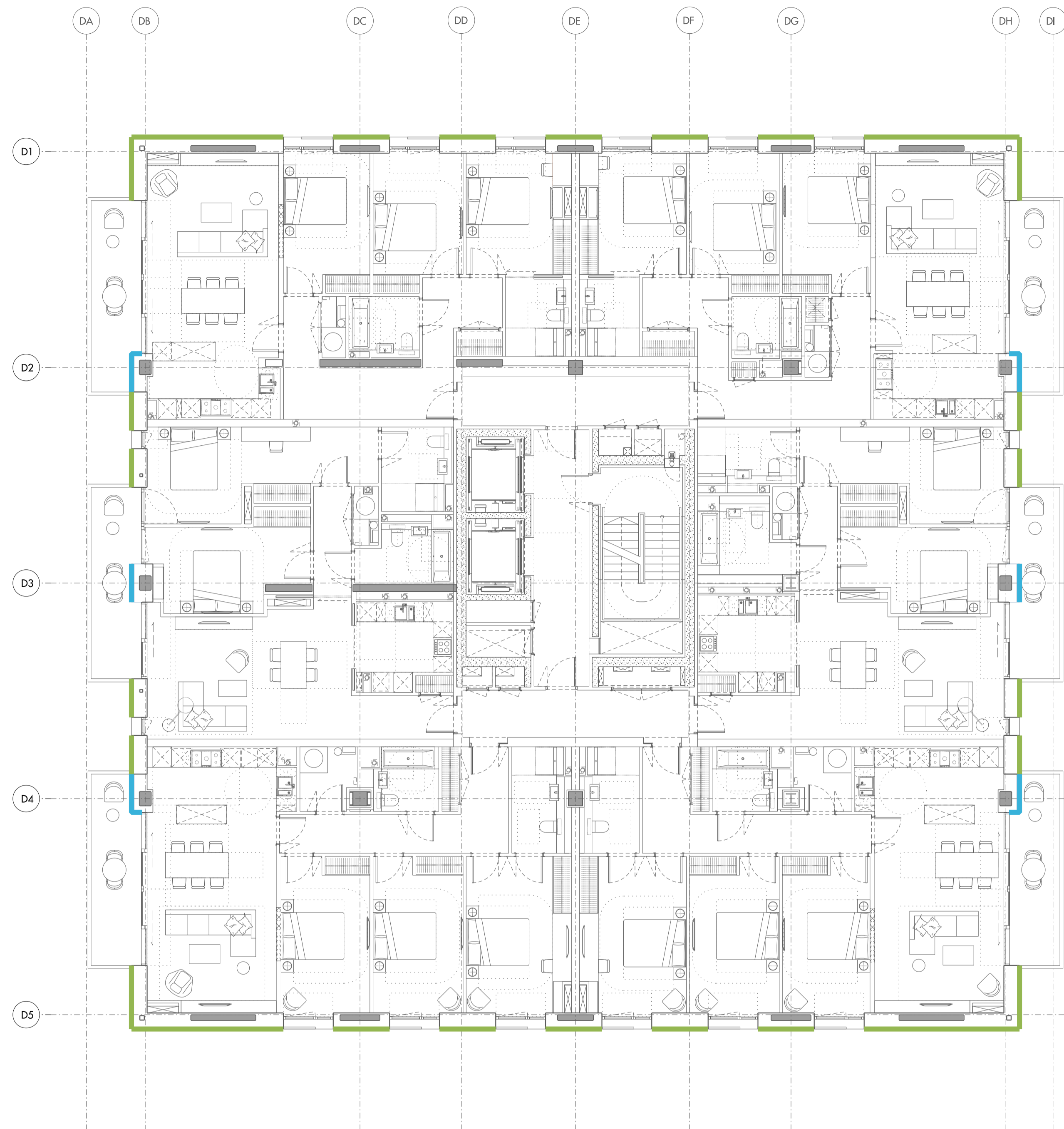
REV	DATE	DESCRIPTION	CKD
T1	11.07.2014	ISSUED FOR STAGE E	NR
T2	05.08.2014	ISSUED FOR STAGE E	NR

Allies and Morrison
85 Southwark Street
London SE1 0HX
020 7921 0100
020 7921 0101
info@alliesandmorrison.co.uk

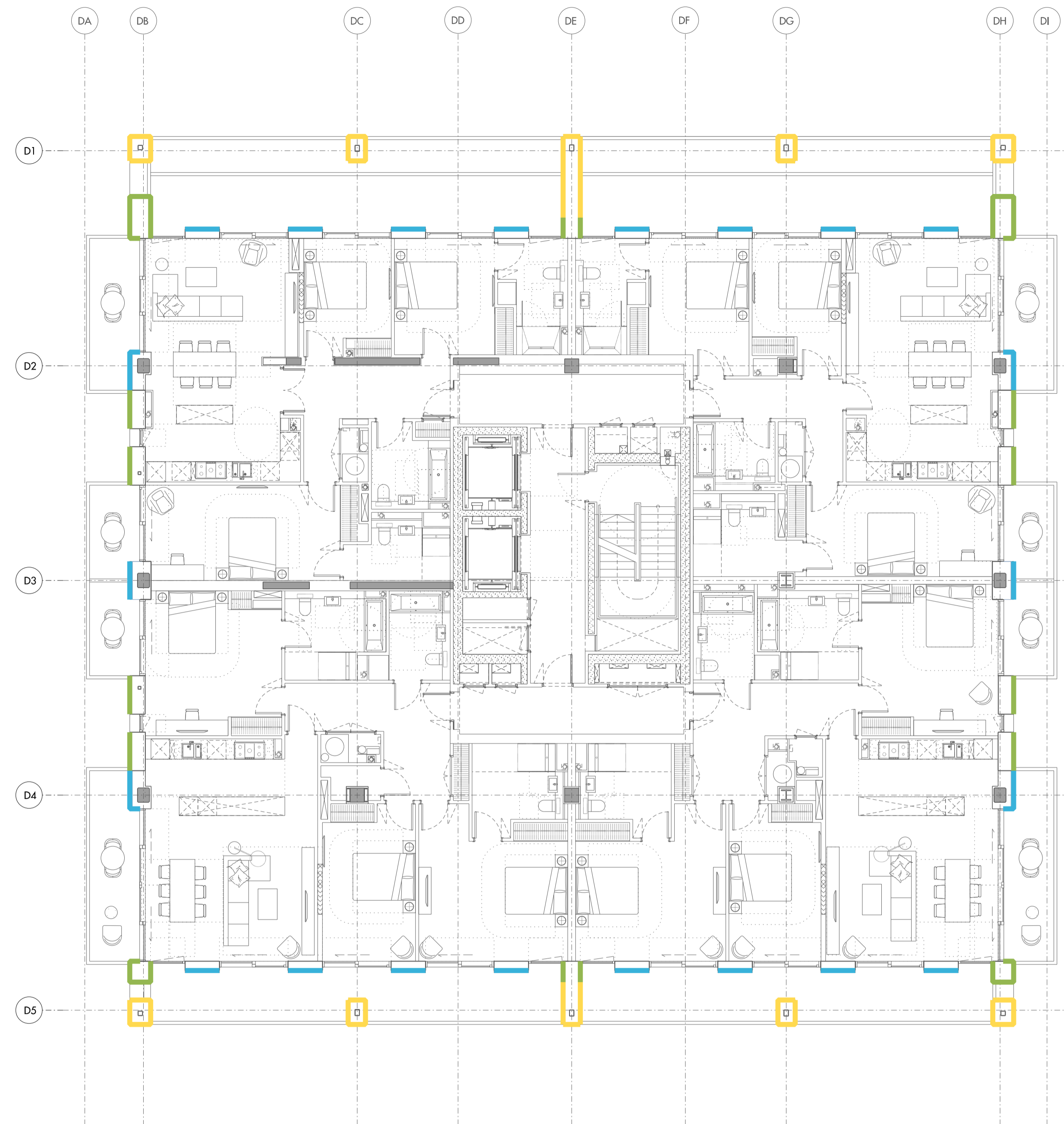
A&M JOB NO: 809

KIDDERPORE AVENUE : BLOCK D
LEVEL 00
EXTERNAL WALL SCOPE
809_02_21_102

SCALE 1:100@A1 1:200@A3



01 BLOCK D - TYPICAL FLOOR (LEVELS 01, 02, 03)
SCALE 1:100



02 BLOCK D - LEVEL 04
SCALE 1:100

EXTERNAL WALL TYPES

- | | | | | | |
|--|-----------|--|--|-----------|---|
| | EWS - 200 | External brickwork masonry insulated cavity walling on light steel framed backing wall | | EWS - 206 | Masonry blockwork insulated cavity walling on concrete backing wall |
| | EWS - 201 | External brickwork masonry un-insulated cavity walling on blockwork frame | | EWS - 207 | External masonry brickwork insulated cavity walling on concrete backing wall |
| | EWS - 202 | External brickwork masonry un-insulated twin cavity walling on light steel framed backing wall | | EWS - 230 | External patterned metal rainscreen cladding on light steel framed backing wall |
| | EWS - 203 | EWS - 204 External brickwork masonry un-insulated cavity walling on concrete wall | | EWS - 231 | External metal rainscreen cladding to penthouse and upper floor |
| | EWS - 204 | Wall insulation to solid masonry blockwork walling | | EWS - 232 | Fins and shelves to penthouse |
| | EWS - 205 | Masonry blockwork insulated cavity wall to car park | | EWS - 233 | Metal rainscreen to penthouse parapet wall |

KEY:

- WINDOW TYPES
- WIN - 240

EXTERNAL DOOR KEY:

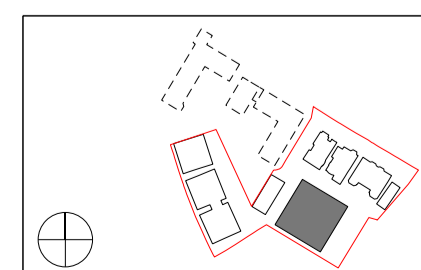
- External metal louvered single leaf door
- External metal louvered substation door system
- Internal metal louvered double doors

LOUVRE KEY:

- External metal louvres
- Internal metal louvres

NOTES:

- 1) Drawings to be read in conjunction with:
 - 06 series GA drawings
 - 21 series drawings
 - Window schedule
 - Window specification
- 2) MVHR unit requires two air bricks per flat. For location refer to GA's and details
- 3) Movement joint required every 6m on the inner face of the parapet wall.
- 4) Refer to structural engineer drawings and specification for all masonry restraint items such as masonry angles, brick ties, wall starters, reinforcement and lintels.
- 5) Masonry restraint support angles to return in recessed balcony



Do not scale from this drawing. Use figured dimensions only. Figured dimensions are in millimetres. All levels are in metres. All dimensions and levels shall be verified on site before proceeding with works. Detailed site survey to be carried out to verify positions and level relationships with site features and ordnance survey. Boundaries are indicative only and are to be verified by others. The architect must be notified of any discrepancy. Where building components are described in the specification as contractor designed, "construction" information relating to those components on this drawing represents design intent only.

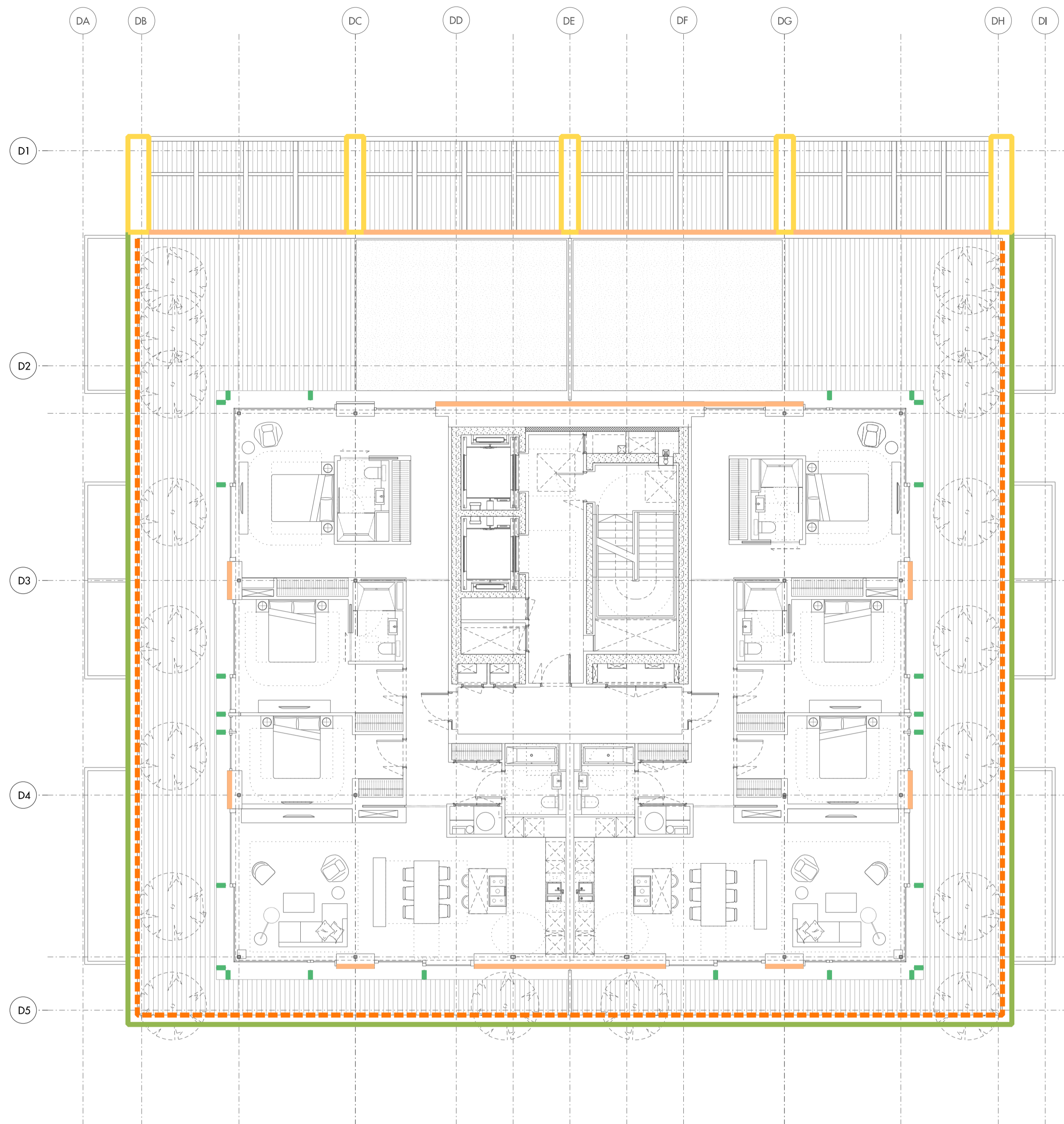
REV	DATE	DESCRIPTION	CKD
T1	11.07.2014	ISSUED FOR STAGE E	NR
T2	05.08.2014	ISSUED FOR STAGE E	NR

Allies and Morrison
85 Southwark Street
London SE1 0HX
020 7921 0100
020 7921 0101
info@alliesandmorrison.co.uk

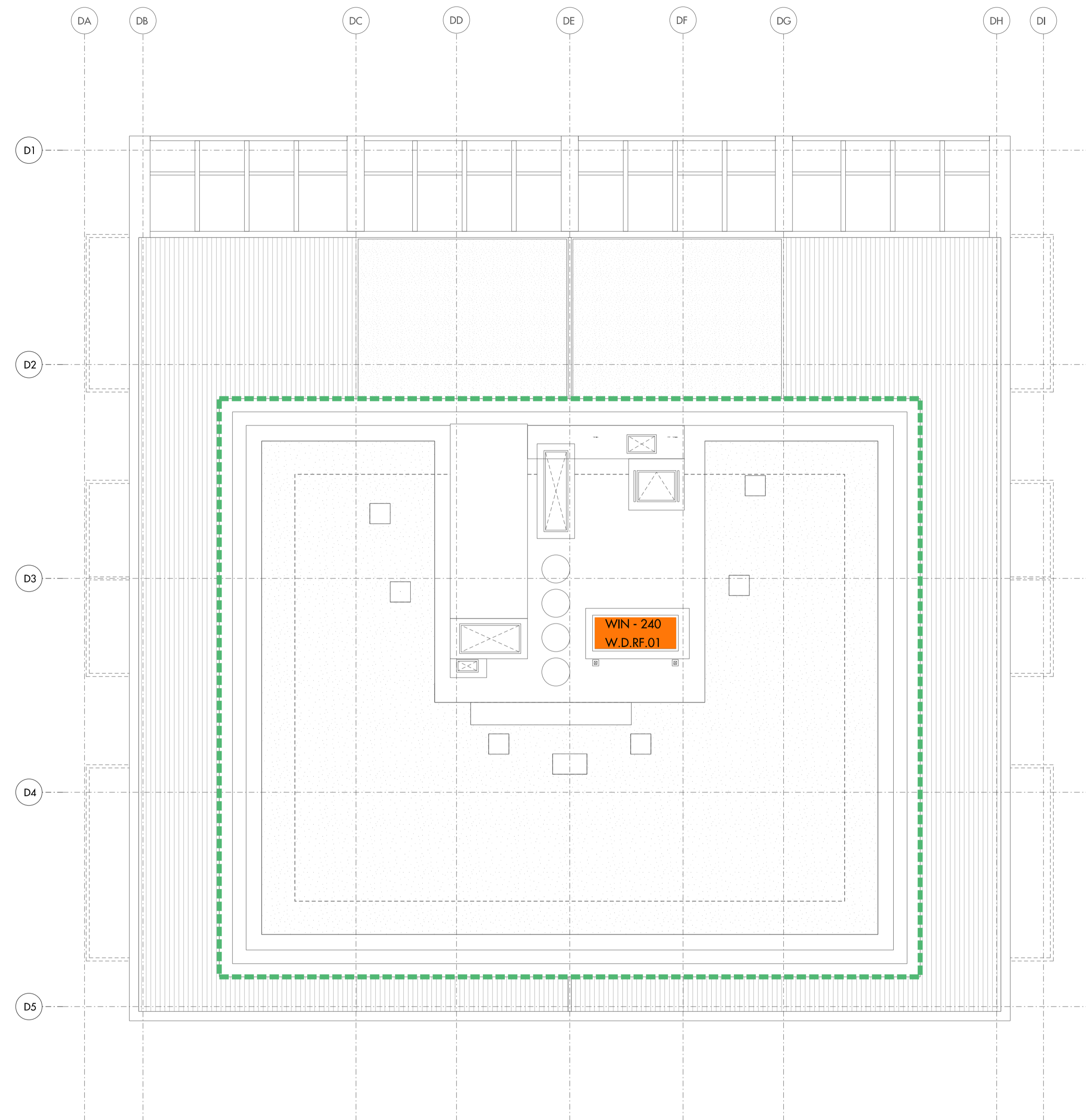
A&M JOB NO: 809

KIDDERPORE AVENUE : BLOCK D
LEVEL 03 & 04
EXTERNAL WALL SCOPE
809_02_21_104

SCALE 1:100@A1 1:200@A3















01 BLOCK D - LEVEL 05
SCALE 1:100



02 BLOCK D - ROOF PLAN
SCALE 1:100

EXTERNAL WALL TYPES

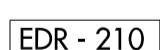
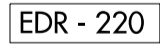
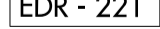
- | | |
|--|--|
|  EWS - 200 External brickwork masonry insulated cavity walling on light steel framed backing wall |  EWS - 206 Masonry blockwork insulated cavity walling on concrete backing wall |
|  EWS - 201 External brickwork masonry un-insulated cavity walling on blockwork frame |  EWS - 207 External masonry brickwork insulated cavity walling on concrete backing wall |
|  EWS - 202 External brickwork masonry un-insulated twin cavity walling on light steel framed backing wall |  EWS - 230 External patterned metal rainscreen cladding on light steel framed backing wall |
|  EWS - 203 EWS - 204 External brickwork masonry un-insulated cavity walling on concrete wall |  EWS - 231 External metal rainscreen cladding to penthouse and upper floor |
|  EWS - 204 Wall insulation to solid masonry blockwork walling |  EWS - 232 Fins and shelves to penthouse |
|  EWS - 205 Masonry blockwork insulated cavity wall to car park |  EWS - 233 Metal rainscreen to penthouse parapet wall |

KEY:



WINDOW TYPES

 WIN - 240

EXTERNAL DOOR KEY:

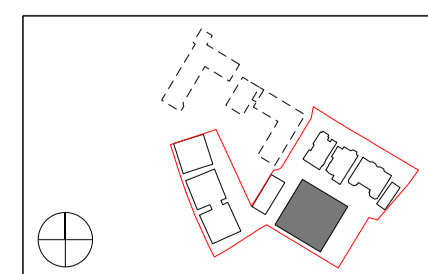
-  EDR - 210 External metal louvered single leaf door
-  EDR - 220 External metal louvered substation door system
-  EDR - 221 Internal metal louvered double doors

LOUVRE KEY:

-  LVR - 200 External metal louvres
-  LVR - 201 Internal metal louvres

NOTES:

- 1) Drawings to be read in conjunction with:
 - 06 series GA drawings
 - 21 series drawings
 - Window schedule
 - Window specification
- 2) MVHR unit requires two air bricks per flat. For location refer to GA's and details
- 3) Movement joint required every 6m on the inner face of the parapet wall.
- 4) Refer to structural engineer drawings and specification for all masonry restraint items such as masonry angles, brick ties, wall starters, reinforcement and lintels.
- 5) Masonry restraint support angles to return in recessed balcony



Do not scale from this drawing. Use figured dimensions only. Figured dimensions are in millimetres. All levels are in metres. All dimensions and levels shall be verified on site before proceeding with works. Detailed site survey to be carried out to verify positions and level relationships with site features and ordinance survey. Boundaries are indicative only and are to be verified by others. The architect must be notified of any discrepancy. Where building components are described in the specification as contractor designed, "construction" information relating to those components on this drawing represents design intent only.

REV	DATE	DESCRIPTION	CKD
T1	11.07.2014	ISSUED FOR STAGE E	NR
T2	05.08.14	ISSUED FOR STAGE E	NR

Allies and Morrison
85 Southwark Street
London SE1 0HX
020 7921 0100
020 7921 0101
info@alliesandmorrison.co.uk

A&M JOB NO: 809

KIDDERPORE AVENUE : BLOCK D
LEVEL 05 & ROOF PLAN
EXTERNAL WALL SCOPE
809_02_21_105

SCALE 1:100@A1 1:200@A3