



- KEY: WINDOW TYPES**
- WIN - 200
  - WIN - 201
  - WIN - 202
  - WIN - 203
  - WIN - 204
  - WIN - 205
  - WIN - 206
  - WIN - 207
  - WIN - 208
  - WIN - 209
  - WIN - 210
  - WIN - 240
- KEY: EXTERNAL DOOR TYPES**
- EDR - 210
  - EDR - 220
  - EDR - 221
- KEY: LOUVRE TYPES**
- LVR - 200
  - LVR - 201

**BRICK RECESS CILL AND SOFFIT FLASHINGS**

- PPC aluminium flashing to cill and soffit of brick opening
- Brick to return as soffit
- PPC aluminium flashing to cill and soffit of brick opening

**EXTERNAL WALL TYPES**

- EWS - 200 External brickwork masonry insulated cavity walling on light steel framed backing wall
- EWS - 201 External brickwork masonry un-insulated cavity walling on blockwork frame
- EWS - 202 External brickwork masonry un-insulated twin cavity walling on light steel framed backing wall
- EWS - 203 External brickwork masonry un-insulated cavity walling on concrete wall
- EWS - 204 Wall insulation to solid masonry blockwork walling
- EWS - 205 Masonry blockwork insulated cavity wall to car park
- EWS - 206 Masonry blockwork insulated cavity walling on concrete backing wall
- EWS - 207 External masonry brickwork insulated cavity walling on concrete backing wall
- EWS - 230 External patterned metal rainscreen cladding on light steel framed backing wall
- EWS - 231 External metal rainscreen cladding to penthouse and upper floor
- EWS - 232 Fins and shelves to penthouse
- EWS - 233 Metal rainscreen to penthouse parapet wall

**MASONRY SUPPORT**

Refer to Structural Engineer drawings and specifications for details

- Masonry support angle
- Channel lintel
- Dropped lintel
- Masonry reinforcement
- MJ Movement joint
- Movement joint inside parapet every 6m
- PP Parapet post
- Steel post

To be confirmed by Structural engineers

**NOTES:**

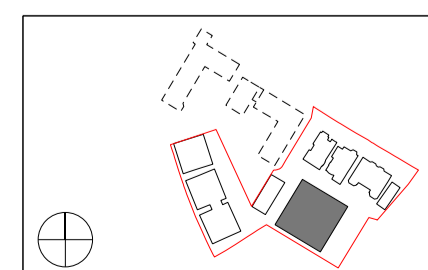
Drawings to be read in conjunction with:

- 06 series GA drawings
- 21 series drawings
- Window schedule
- Window specification
- MVHR unit requires two air bricks per flat. For location refer to GA's and details

Movement joint required every 6m on the inner face of the parapet wall.

Refer to structural engineer drawings and specification for all masonry restraint items such as masonry angles, brick ties, wall starters, reinforcement and lintels.

Masonry restraint support angles to return in recessed balcony



Do not scale from this drawing. Use figured dimensions only. Figured dimensions are in millimetres. All levels are in metres. All dimensions and levels shall be verified on site before proceeding with works. Detailed site survey to be carried out to verify positions and level relationships with site features and ordinance survey. Boundaries are indicative only and are to be verified by others. The architect must be notified of any discrepancy. Where building components are described in the specification as contractor designed, "construction" information relating to those components on this drawing represents design intent only.

REV	DATE	DESCRIPTION	OXD
T1	11.07.2014	ISSUED FOR STAGE E	NR
T2	05.08.14	ISSUED FOR STAGE E	

Allies and Morrison  
 85 Southwork Street  
 London SE1 0HX  
 020 7921 0100  
 020 7921 0101  
 info@alliesandmorrison.co.uk

KIDDERPORE AVENUE : BLOCK D  
 NORTH WEST ELEVATION  
 EXTERNAL WALL SCOPE  
 809\_02\_21\_200

A&M JOB NO: 809

SCALE 1:100@A1 200@A3



- KEY:**
- |                     |             |                            |             |                     |
|---------------------|-------------|----------------------------|-------------|---------------------|
| <b>WINDOW TYPES</b> | <b>KEY:</b> | <b>EXTERNAL DOOR TYPES</b> | <b>KEY:</b> | <b>LOUVRE TYPES</b> |
| WIN - 200           | EDR - 210   | EDR - 220                  | LVR - 200   |                     |
| WIN - 201           | EDR - 221   |                            | LVR - 201   |                     |
| WIN - 202           |             |                            |             |                     |
| WIN - 203           |             |                            |             |                     |
| WIN - 204           |             |                            |             |                     |
| WIN - 205           |             |                            |             |                     |
| WIN - 206           |             |                            |             |                     |
| WIN - 207           |             |                            |             |                     |
| WIN - 208           |             |                            |             |                     |
| WIN - 209           |             |                            |             |                     |
| WIN - 210           |             |                            |             |                     |
| WIN - 240           |             |                            |             |                     |

- BRICK RECESS CILL AND SOFFIT FLASHINGS**
- PPC aluminium flashing to cill and soffit of brick opening
  - Brick to return as soffit
  - PPC aluminium flashing to cill and soffit of brick opening

- EXTERNAL WALL TYPES**
- EWS - 200 External brickwork masonry insulated cavity walling on light steel framed backing wall
  - EWS - 201 External brickwork masonry un-insulated cavity walling on blockwork frame
  - EWS - 202 External brickwork masonry un-insulated twin cavity walling on light steel framed backing wall
  - EWS - 203 External brickwork masonry un-insulated cavity walling on concrete wall
  - EWS - 204 Wall insulation to solid masonry blockwork walling
  - EWS - 205 Masonry blockwork insulated cavity wall to car park
  - EWS - 206 Masonry blockwork insulated cavity walling on concrete backing wall
  - EWS - 207 External masonry brickwork insulated cavity walling on concrete backing wall
  - EWS - 230 External patterned metal rainscreen cladding on light steel framed backing wall
  - EWS - 231 External metal rainscreen cladding to penthouse and upper floor
  - EWS - 232 Fins and shelves to penthouse
  - EWS - 233 Metal rainscreen to penthouse parapet wall

**NOTES:**

Drawings to be read in conjunction with:

- 06 series GA drawings
- 21 series drawings
- Window schedule
- Window specification

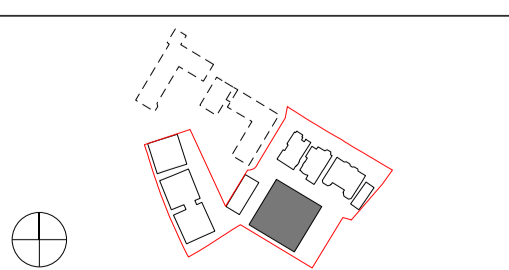
MVHR unit requires two air bricks per flat. For location refer to GA's and details

Movement joint required every 6m on the inner face of the parapet wall.

Refer to structural engineer drawings and specification for all masonry restraint items such as masonry angles, brick ties, wall starters, reinforcement and lintels.

Masonry restraint support angles to return in recessed balcony

- MASONRY SUPPORT**  
Refer to Structural Engineer drawings and specifications for details
- Masonry support angle
  - Channel lintel
  - Dropped lintel
  - Masonry reinforcement
  - Movement joint
  - Movement joint inside parapet every 6m
  - Parapet post
  - Steel post

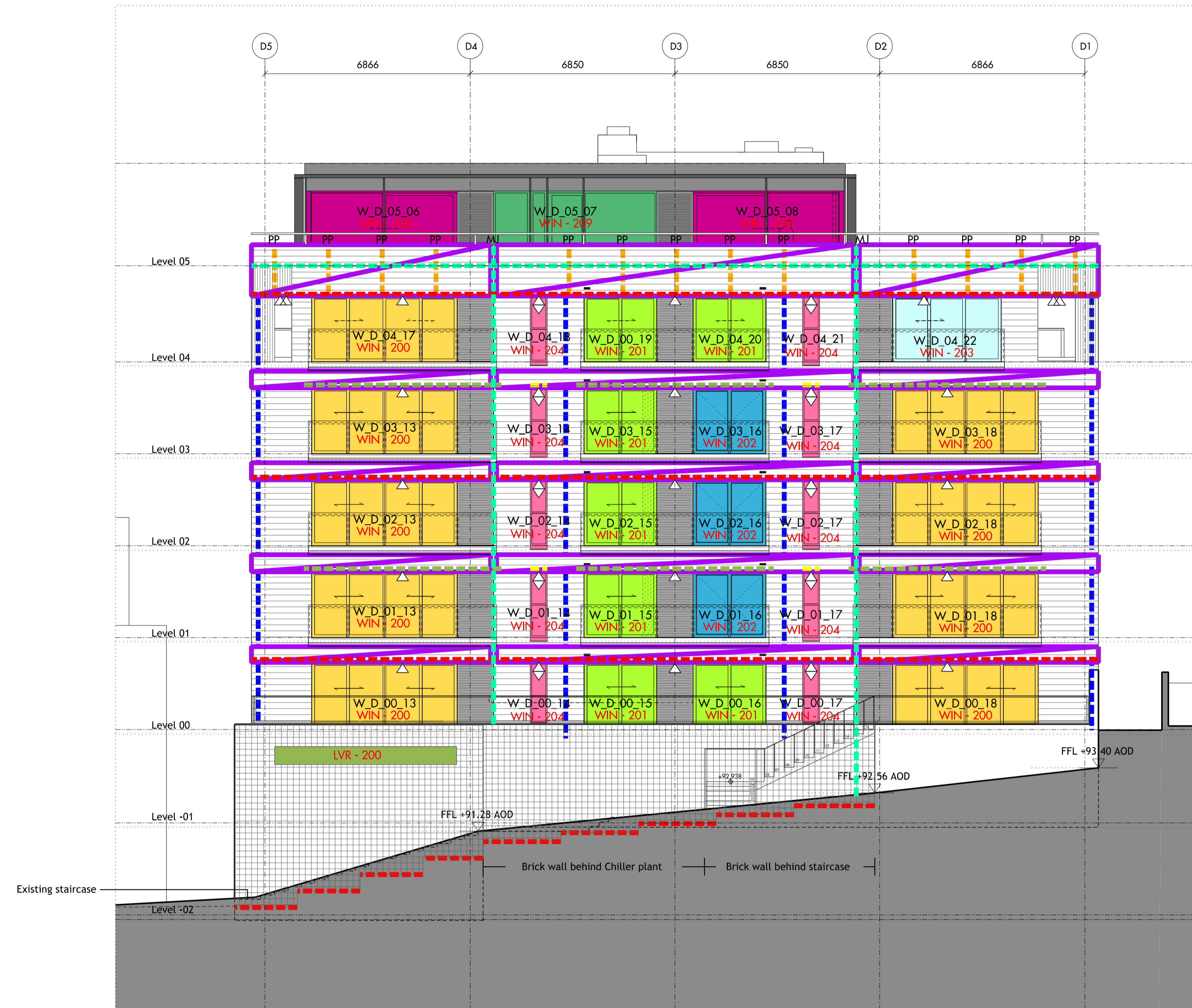


Do not scale from this drawing. Use figured dimensions only. Figured dimensions are in millimetres. All levels are in metres. All dimensions and levels shall be verified on site before proceeding with works. Detailed site survey to be carried out to verify positions and level relationships with site features and ordnance survey. Boundaries are indicative only and are to be verified by others. The architect must be notified of any discrepancy. Where building components are described in the specification as contractor designed, "construction" information relating to those components on this drawing represents design intent only.

REV	DATE	DESCRIPTION	CD
T1	11.07.2014	ISSUED FOR STAGE E	NR
T2	05.08.14	ISSUED FOR STAGE E	

Allies and Morrison  
85 Southwark Street  
London SE1 0HX  
telephone 020 7921 0100  
facsimile 020 7921 0101  
email info@alliesandmorrison.co.uk  
A&M JOB NO: 809

KIDDERPORE AVENUE : BLOCK D  
**SOUTH WEST ELEVATION**  
**EXTERNAL WALL SCOPE**  
809\_02\_21\_201  
SCALE 1:100@A1 1:200@A3



**NOTES:**

Drawings to be read in conjunction with:

- 06 series GA drawings
  - 21 series drawings
  - Window schedule
  - Window specification
- MVHR unit requires two air bricks per flat. For location refer to GA's and details

Movement joint required every 6m on the inner face of the parapet wall.

Refer to structural engineer drawings and specification for all masonry restraint items such as masonry angles, brick ties, wall starters, reinforcement and lintels.

Masonry restraint support angles to return in recessed balcony

**KEY:**

**WINDOW TYPES**

- WIN - 200
- WIN - 201
- WIN - 202
- WIN - 203
- WIN - 204
- WIN - 205
- WIN - 206
- WIN - 207
- WIN - 208
- WIN - 209
- WIN - 210
- WIN - 240

**KEY:**

**EXTERNAL DOOR TYPES**

- EDR - 210
- EDR - 220
- EDR - 221

**KEY:**

**LOUVRE TYPES**

- LVR - 200
- LVR - 201

**BRICK RECESS CILL AND SOFFIT FLASHINGS**

- PPC aluminium flashing to cill and soffit of brick opening
- Brick to return as soffit
- PPC aluminium flashing to cill and soffit of brick opening

**EXTERNAL WALL TYPES**

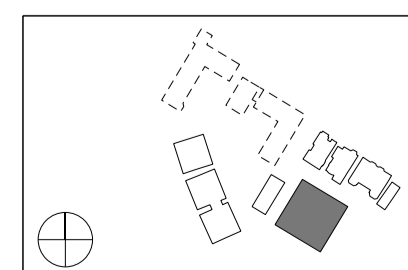
- EWS - 200 External brickwork masonry insulated cavity walling on light steel framed backing wall
- EWS - 201 External brickwork masonry un-insulated cavity walling on blockwork frame
- EWS - 202 External brickwork masonry un-insulated twin cavity walling on light steel framed backing wall
- EWS - 203 External brickwork masonry un-insulated cavity walling on concrete wall
- EWS - 204 Wall insulation to solid masonry blockwork walling
- EWS - 205 Masonry blockwork insulated cavity wall to car park
- EWS - 206 Masonry blockwork insulated cavity walling on concrete backing wall
- EWS - 207 External masonry brickwork insulated cavity walling on concrete backing wall
- EWS - 230 External patterned metal rainscreen cladding on light steel framed backing wall
- EWS - 231 External metal rainscreen cladding to penthouse and upper floor
- EWS - 232 Fins and shelves to penthouse
- EWS - 233 Metal rainscreen to penthouse parapet wall

**MASONRY SUPPORT**

Refer to Structural Engineer drawings and specifications for details

- Masonry support angle
- Channel lintel
- Dropped lintel
- Masonry reinforcement
- MJ Movement joint
- Movement joint inside parapet every 6m
- PP Parapet post
- Steel post

To be confirmed by Structural engineers

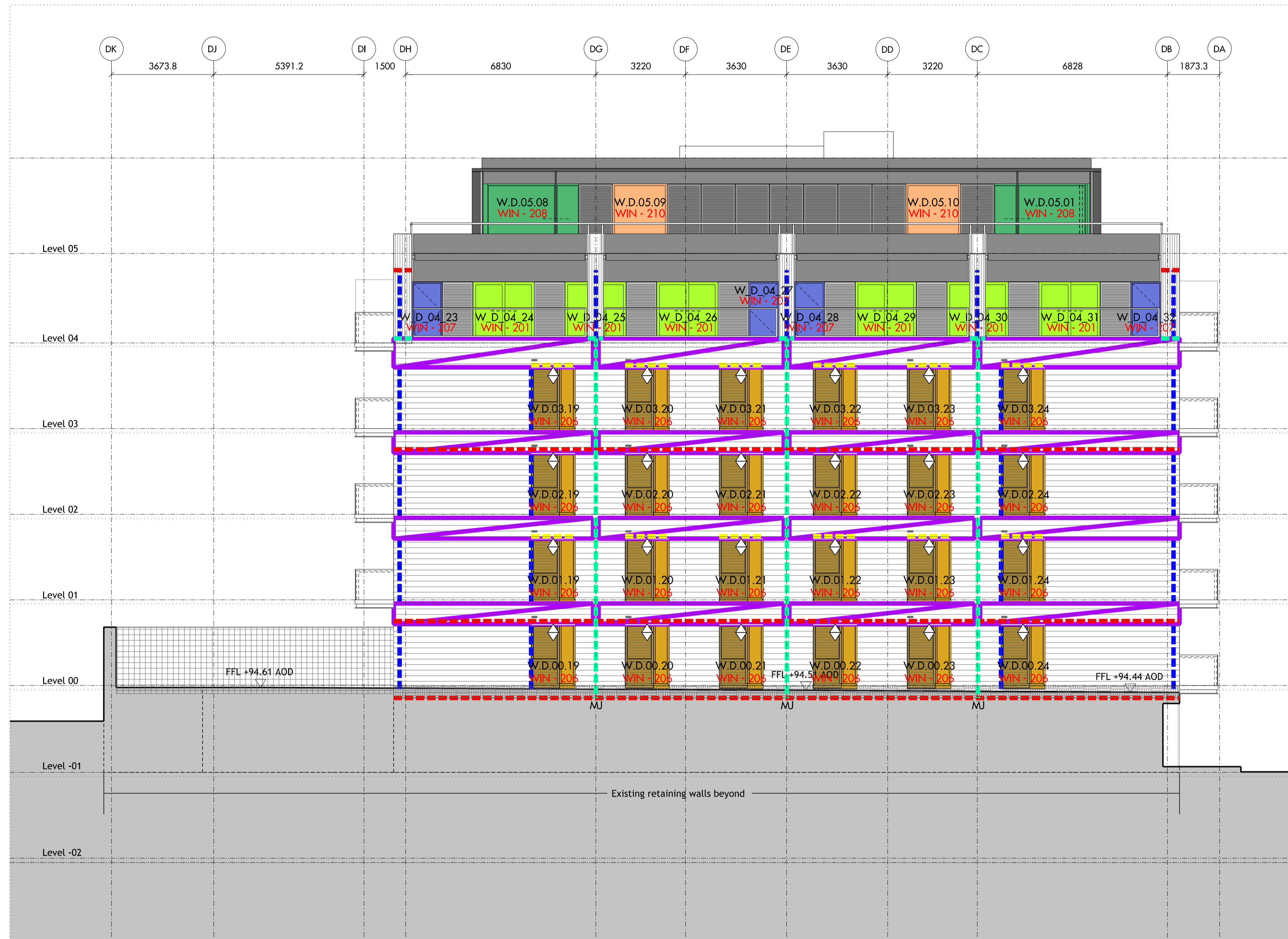


Do not scale from this drawing. Use figured dimensions only. Figured dimensions are in millimetres. All levels are in metres. All dimensions and levels shall be verified on site before proceeding with works. Detailed site survey to be carried out to verify positions and level relationships with site features and ordnance survey. Boundaries are indicative only and are to be verified by others. The architect must be notified of any discrepancy. Where building components are described in the specification as contractor designed, "construction" information relating to those components on this drawing represents design intent only.

REV	DATE	DESCRIPTION	CD
T1	11.07.2014	ISSUED FOR STAGE E	NR
T2	05.08.14	ISSUED FOR STAGE E	

Allies and Morrison  
 85 Southwork Street  
 London SE1 0HX  
 telephone 020 7921 0100  
 facsimile 020 7921 0101  
 email info@alliesandmorrison.co.uk  
 A&M JOB NO: 809

KIDDERPORE AVENUE: BLOCK D  
**SOUTH EAST ELEVATION**  
**EXTERNAL WALL SCOPE**  
 809\_02\_21\_202  
 SCALE: 1:100 @A1 1:200 @A3



- KEY: WINDOW TYPES**
- WIN - 200
  - WIN - 201
  - WIN - 202
  - WIN - 203
  - WIN - 204
  - WIN - 205
  - WIN - 206
  - WIN - 207
  - WIN - 208
  - WIN - 209
  - WIN - 210
  - WIN - 240
- KEY: EXTERNAL DOOR TYPES**
- EDR - 210
  - EDR - 220
  - EDR - 221
- KEY: LOUVRE TYPES**
- LVR - 200
  - LVR - 201

- BRICK RECESS CILL AND SOFFIT FLASHINGS**
- PPC aluminium flashing to cill and soffit of brick opening
  - Brick to return as soffit
  - PPC aluminium flashing to cill and soffit of brick opening

- EXTERNAL WALL TYPES**
- EWS - 200 External brickwork masonry insulated cavity walling on light steel framed backing wall
  - EWS - 201 External brickwork masonry un-insulated cavity walling on blockwork frame
  - EWS - 202 External brickwork masonry un-insulated twin cavity walling on light steel framed backing wall
  - EWS - 203 External brickwork masonry un-insulated cavity walling on concrete wall
  - EWS - 204 Wall insulation to solid masonry blockwork walling
  - EWS - 205 Masonry blockwork insulated cavity wall to car park
  - EWS - 206 Masonry blockwork insulated cavity walling on concrete backing wall
  - EWS - 207 External masonry brickwork insulated cavity walling on concrete backing wall
  - EWS - 230 External patterned metal rainscreen cladding on light steel framed backing wall
  - EWS - 231 External metal rainscreen cladding to penthouse and upper floor
  - EWS - 232 Fins and shelves to penthouse
  - EWS - 233 Metal rainscreen to penthouse parapet wall

- MASONRY SUPPORT**  
Refer to Structural Engineer drawings and specifications for details
- Masonry support angle
  - Channel lintel
  - Dropped lintel
  - Masonry reinforcement
  - MJ Movement joint
  - Movement joint inside parapet every 6m
  - PP Parapet post
  - Steel post

**NOTES:**

Drawings to be read in conjunction with:

- 06 series GA drawings
  - 21 series drawings
  - Window schedule
  - Window specification
- MVHR unit requires two air bricks per flat. For location refer to GA's and details

Movement joint required every 6m on the inner face of the parapet wall.

Refer to structural engineer drawings and specification for all masonry restraint items such as masonry angles, brick ties, wall starters, reinforcement and lintels.

Masonry restraint support angles to return in recessed balcony

REV	DATE	DESCRIPTION	CKD
T1	11.07.2014	ISSUED FOR STAGE E	NR
T2	05.08.14	ISSUED FOR STAGE E	

Do not scale from this drawing. Use figured dimensions only. Figured dimensions are in millimetres. All levels are in metres. All dimensions and levels shall be verified on site before proceeding with works. Detailed site survey to be carried out to verify positions and level relationships with site features and ordinance survey. Boundaries are indicative only and are to be verified by others. The architect must be notified of any discrepancy. Where building components are described in the specification as contractor designed, "construction" information relating to those components on this drawing represents design intent only.

Allies and Morrison  
85 Southwark Street  
London SE1 0HX  
020 7921 0100  
020 7921 0101  
info@alliesandmorrison.co.uk  
A&M JOB NO: 809

KIDDERPORE AVENUE: BLOCK D  
NORTH EAST ELEVATION  
EXTERNAL WALL SCOPE  
809\_02\_21\_203  
SCALE: 1:100 @A1 1:200 @A3