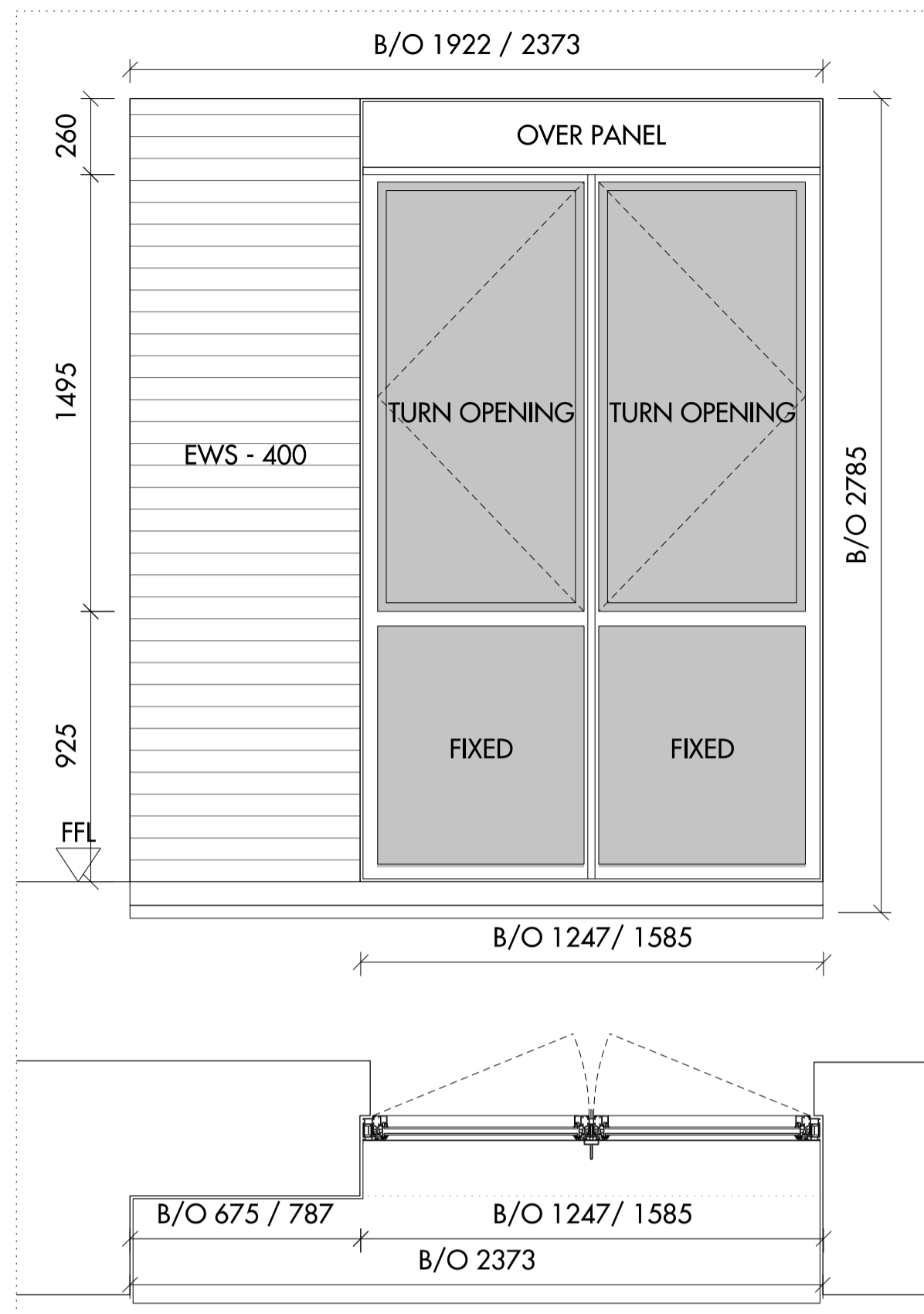
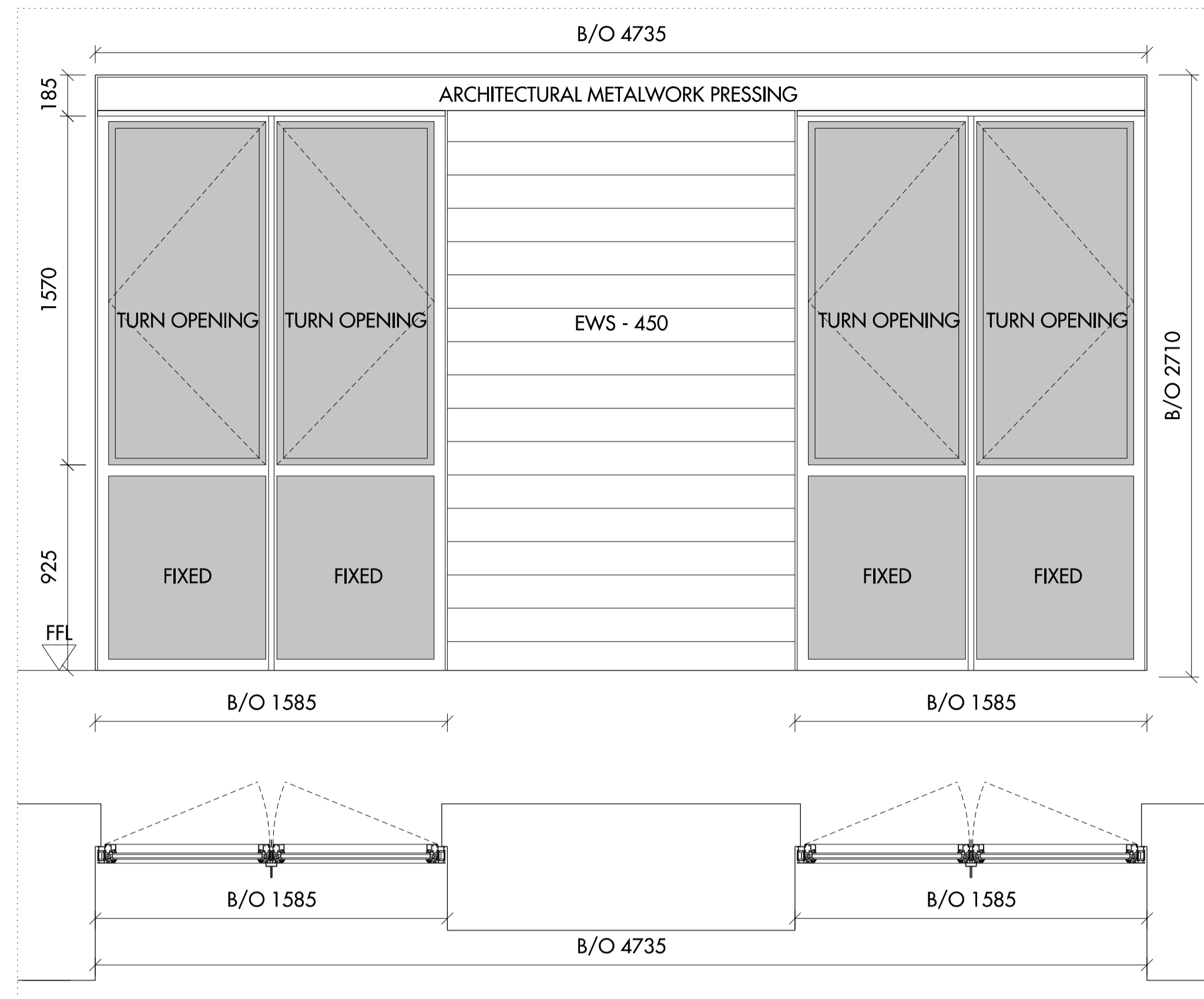


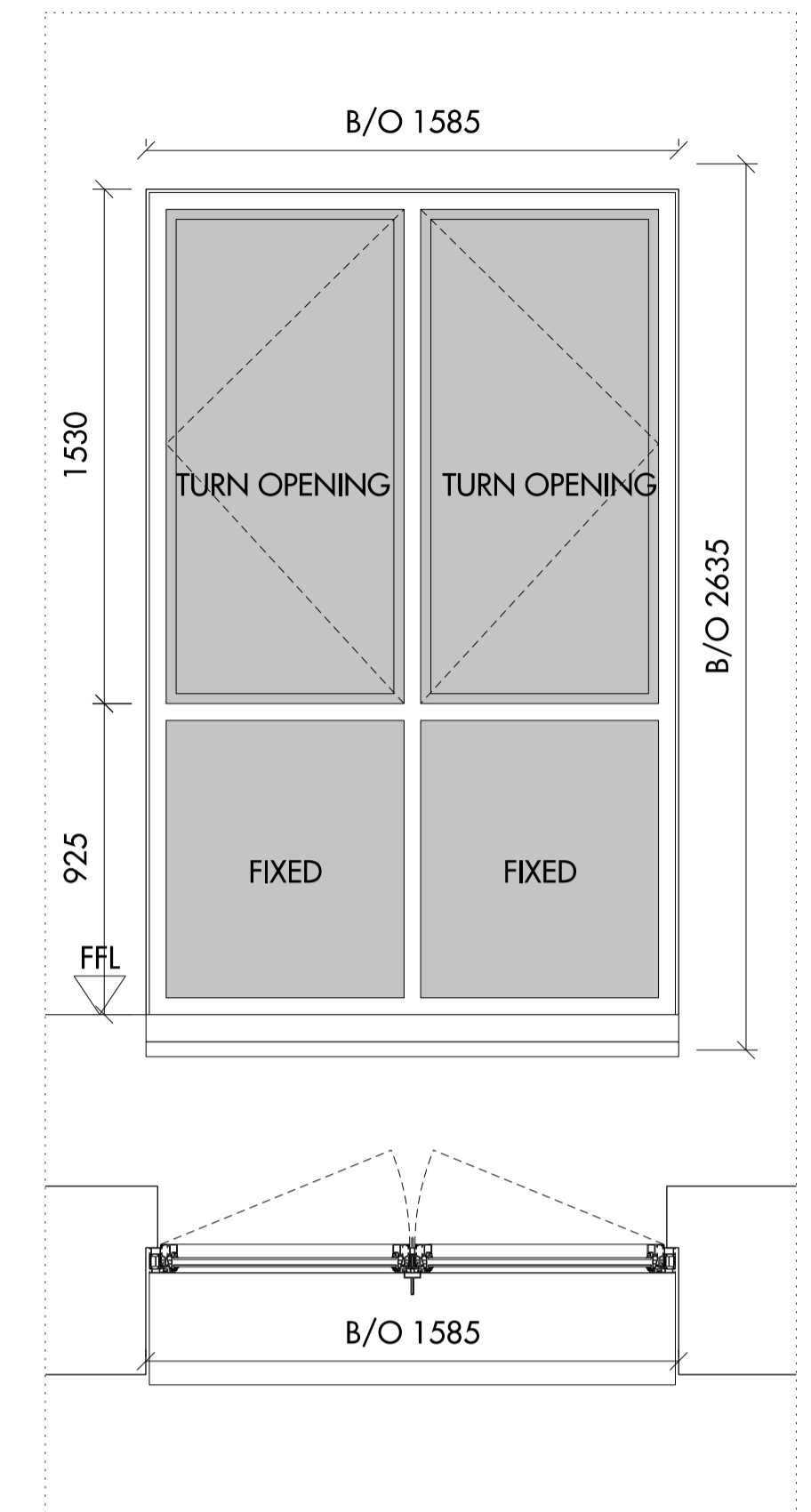
01 WIN - 400 ARRANGEMENT 01



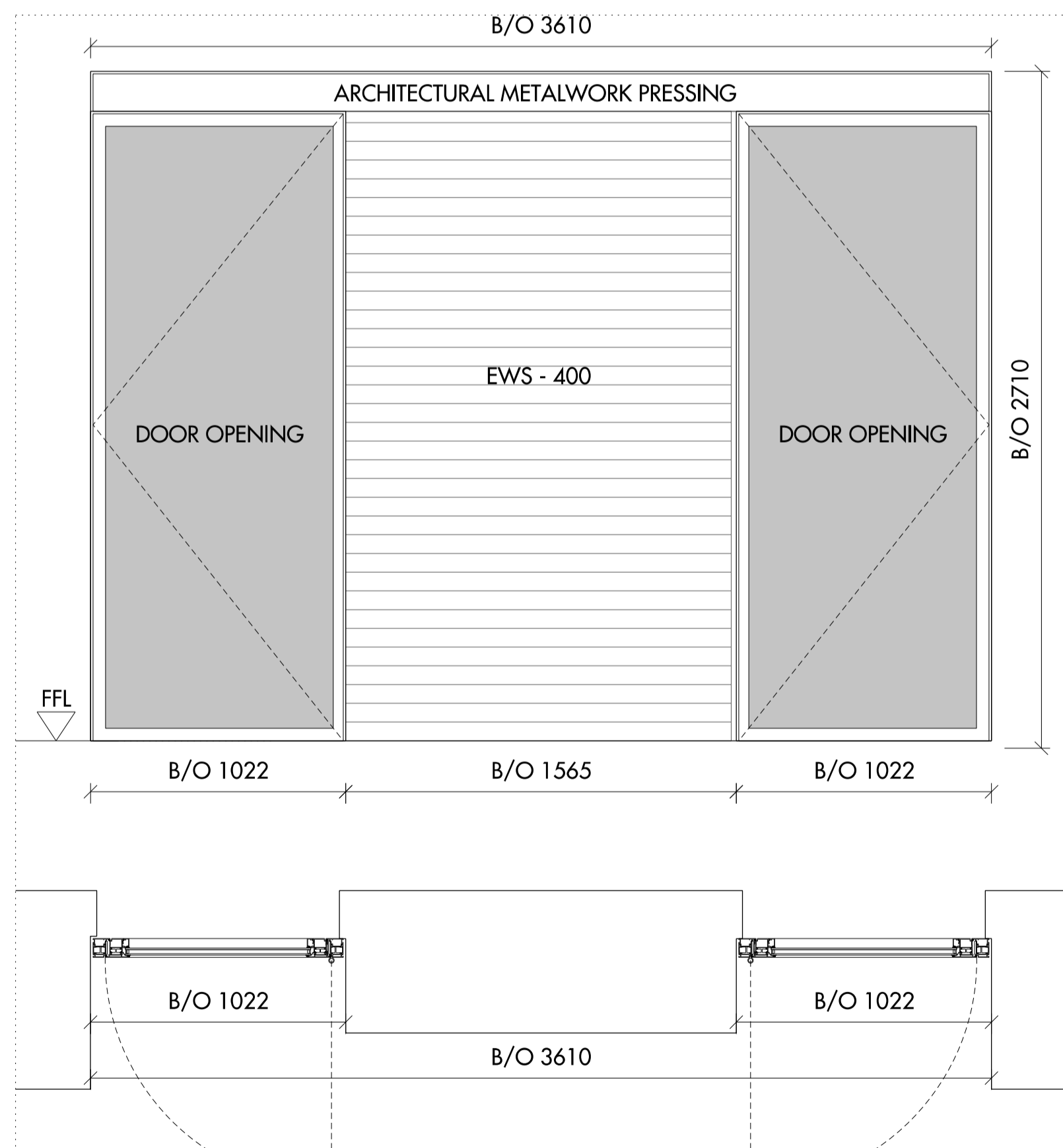
02 WIN - 400 ARRANGEMENT 02



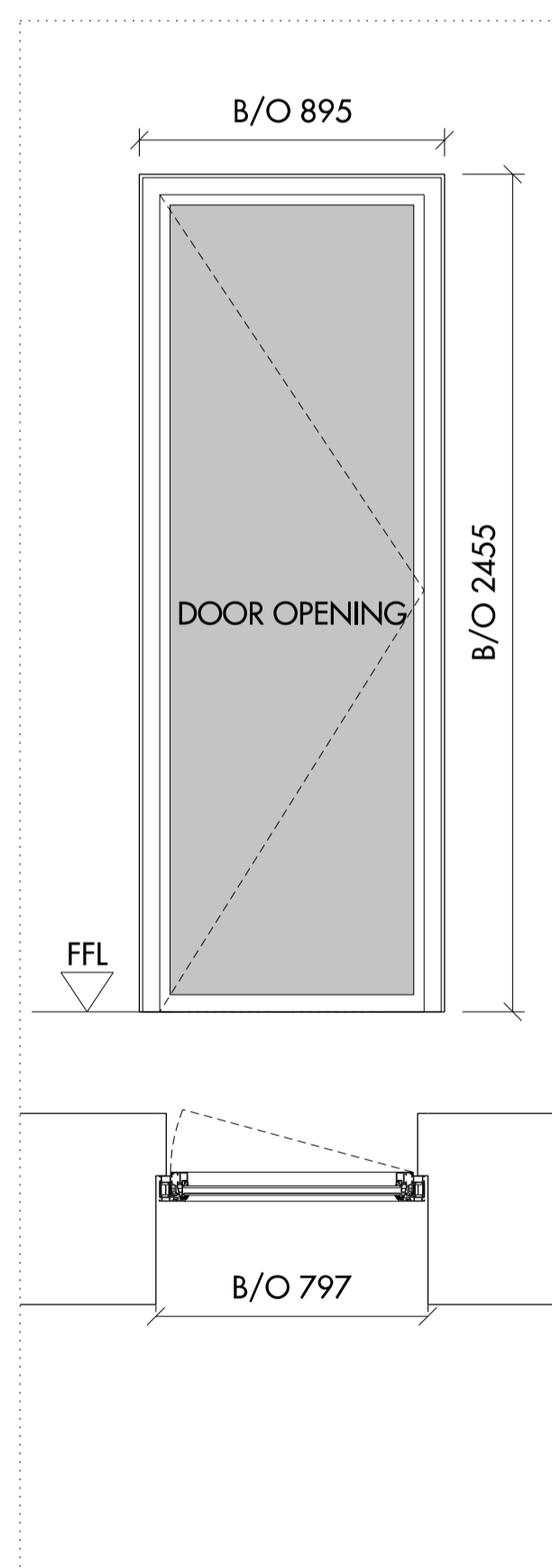
03 WIN - 401 ARRANGEMENT 01



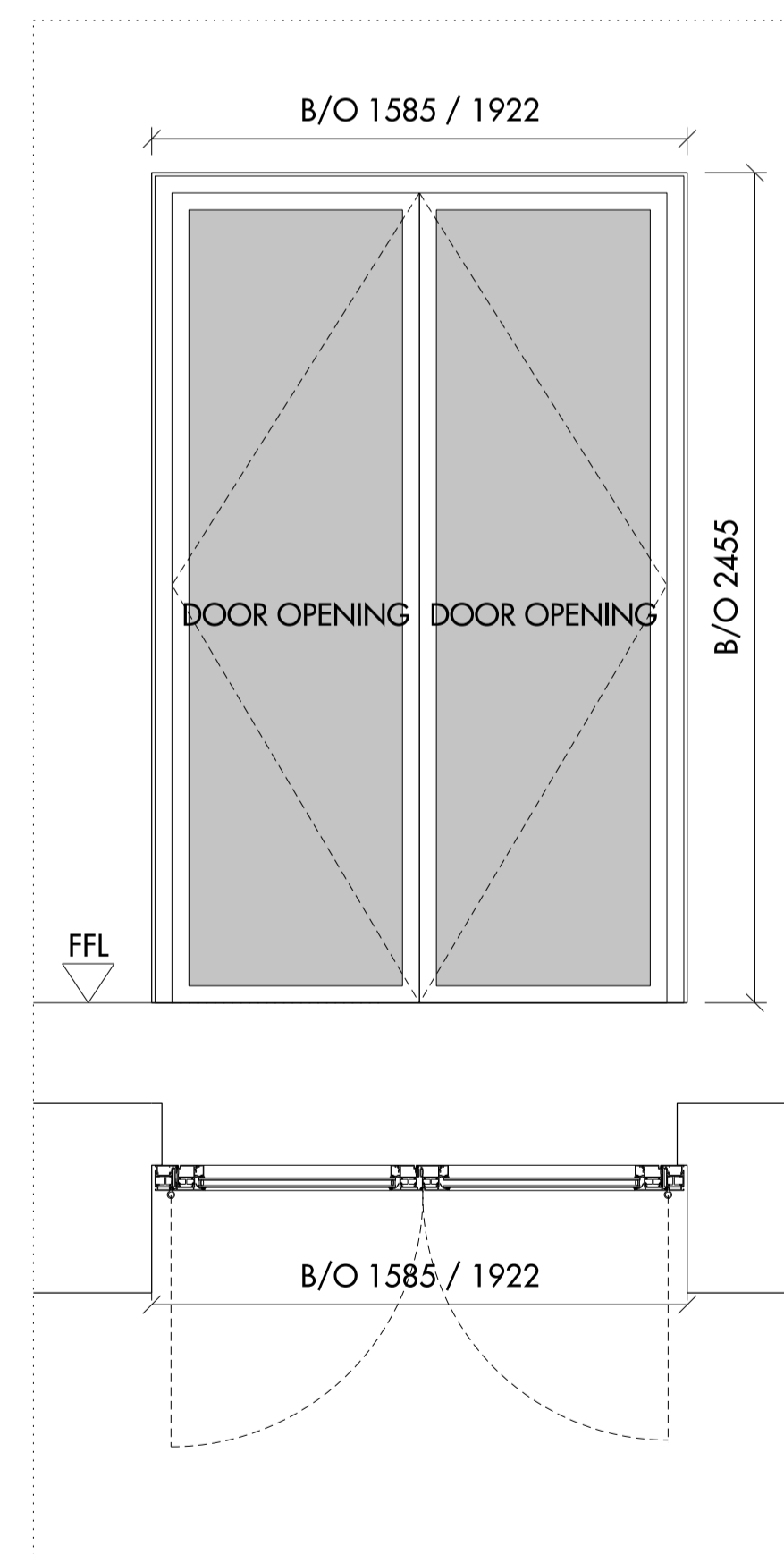
04 WIN - 401 ARRANGEMENT 02



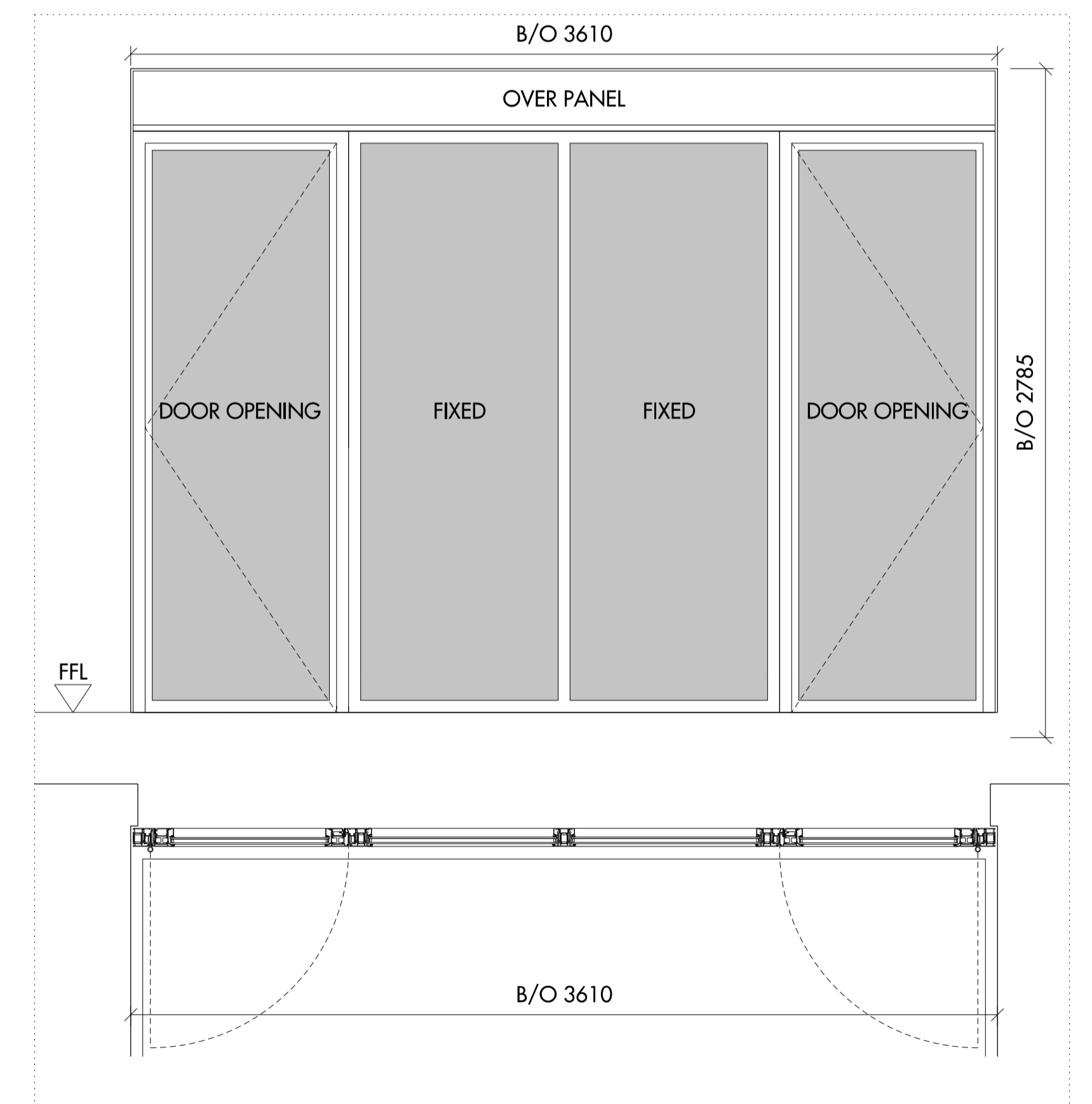
05 WIN - 402 ARRANGEMENT 01



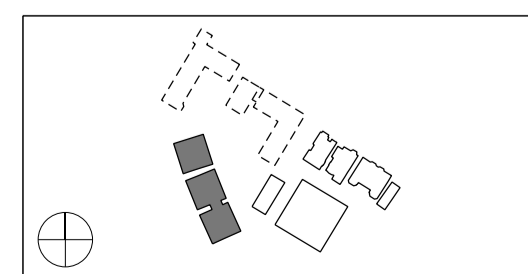
06 WIN - 402 ARRANGEMENT 02



07 WIN - 403



08 WIN - 404



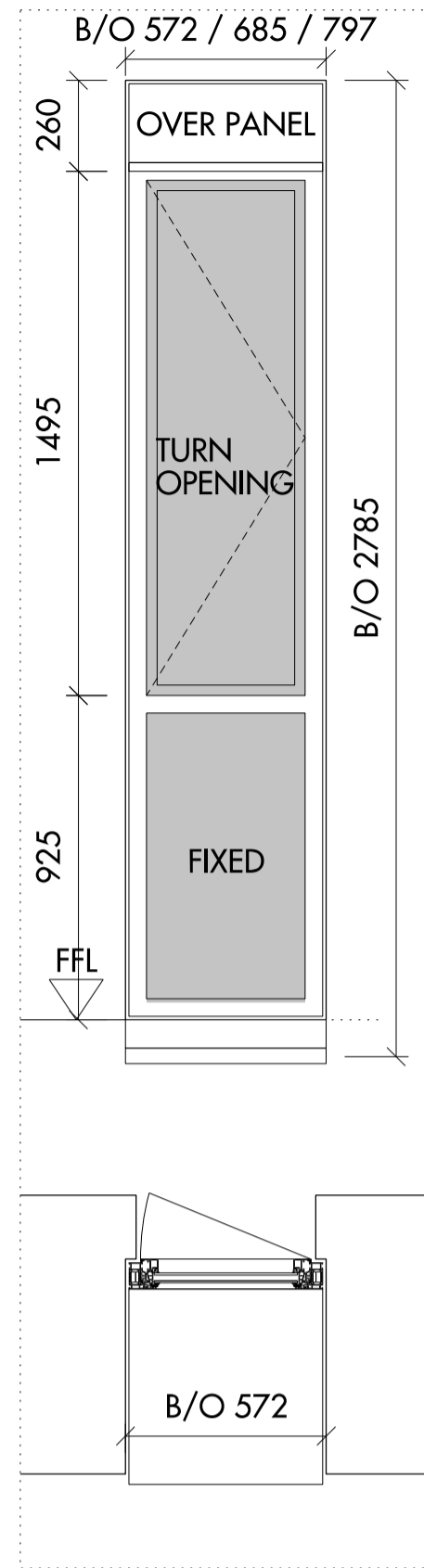
Do not scale from this drawing. Use figured dimensions only. Figured dimensions are in millimetres. All levels are in metres. All dimensions and levels shall be verified on site before proceeding with works. Detailed site survey to be carried out to verify positions and level relationships with site features and ordnance survey. Boundaries are indicative only and are to be verified by others. The architect must be notified of any discrepancy. Where building components are described in the specification as contractor designed, "construction" information relating to those components on this drawing represents design intent only.

REV	DATE	DESCRIPTION	CD
T1	05.08.14	ISSUED FOR STAGE E	NR

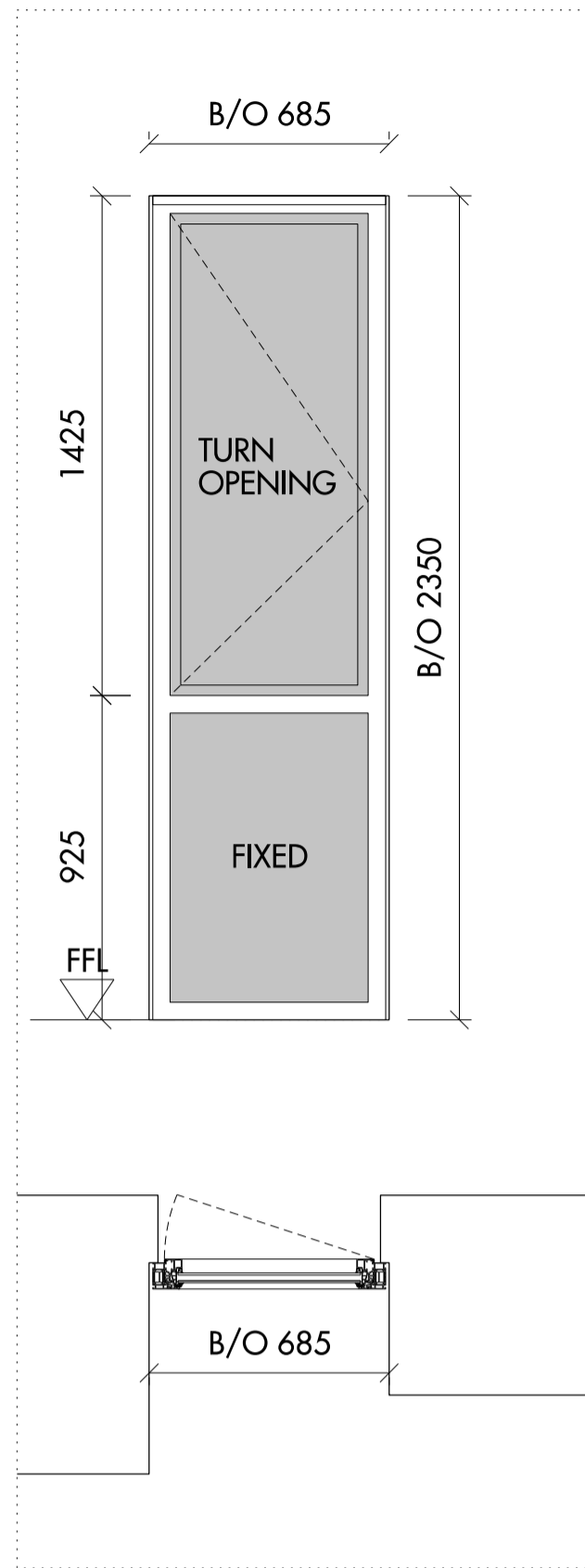
NOTES:
 For technical requirements refer to window specification: 809_10_WIN_EDR_Window systems
 To be read in conjunction with:
 809_04_06_150 and 170 series setting out drawings
 809_04_21 series drawings

Allies and Morrison
 85 Southwark Street
 London SE1 0HX
 020 7921 0100
 020 7921 0101
 info@alliesandmorrison.co.uk
 telephone
 facsimile
 email
 A&M JOB NO: 809

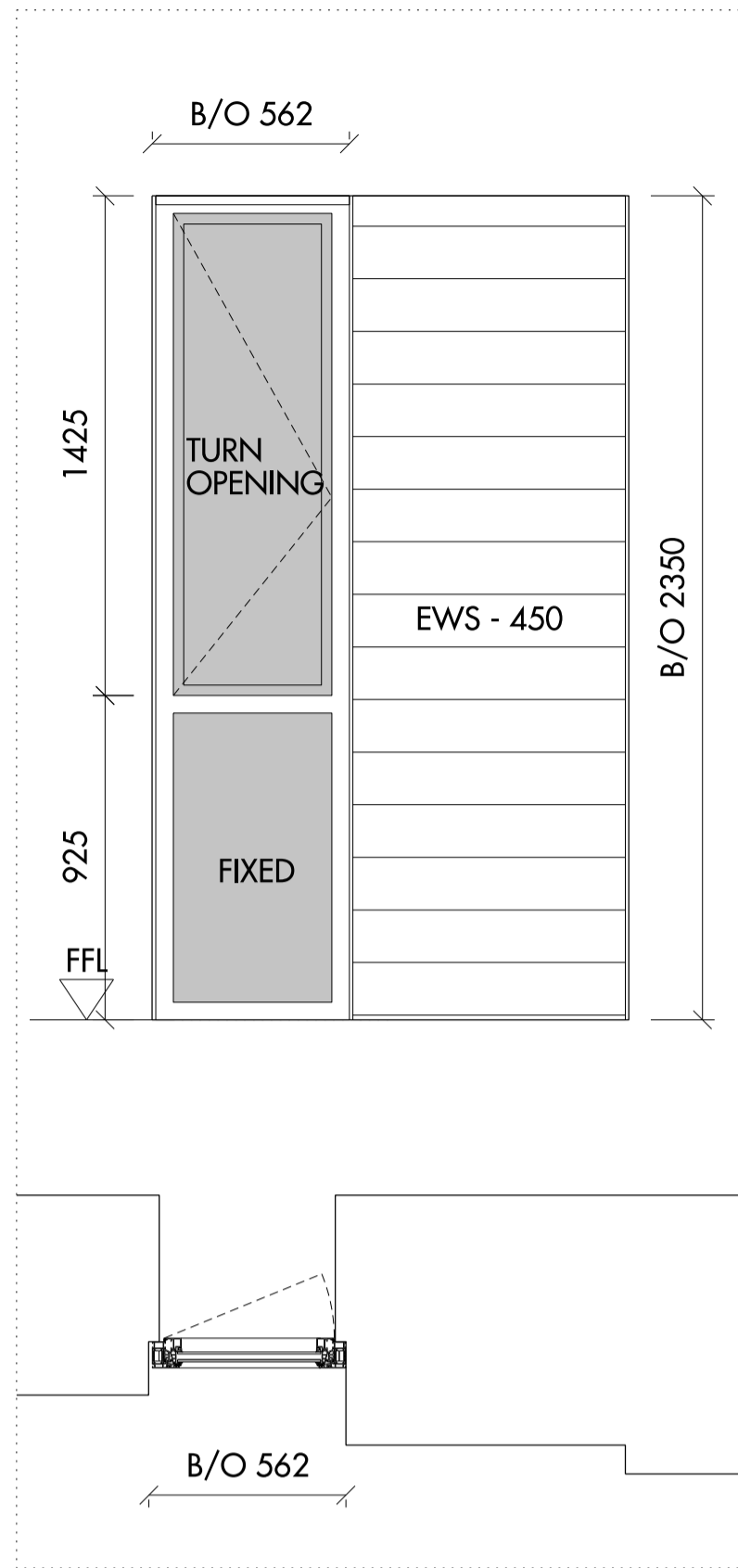
KIDDERPORE AVENUE : BLOCK F-H
WINDOW TYPES
EXTERNAL WALLS
809_04_21_400
 SCALE 1:20 @A1 1:40@A3



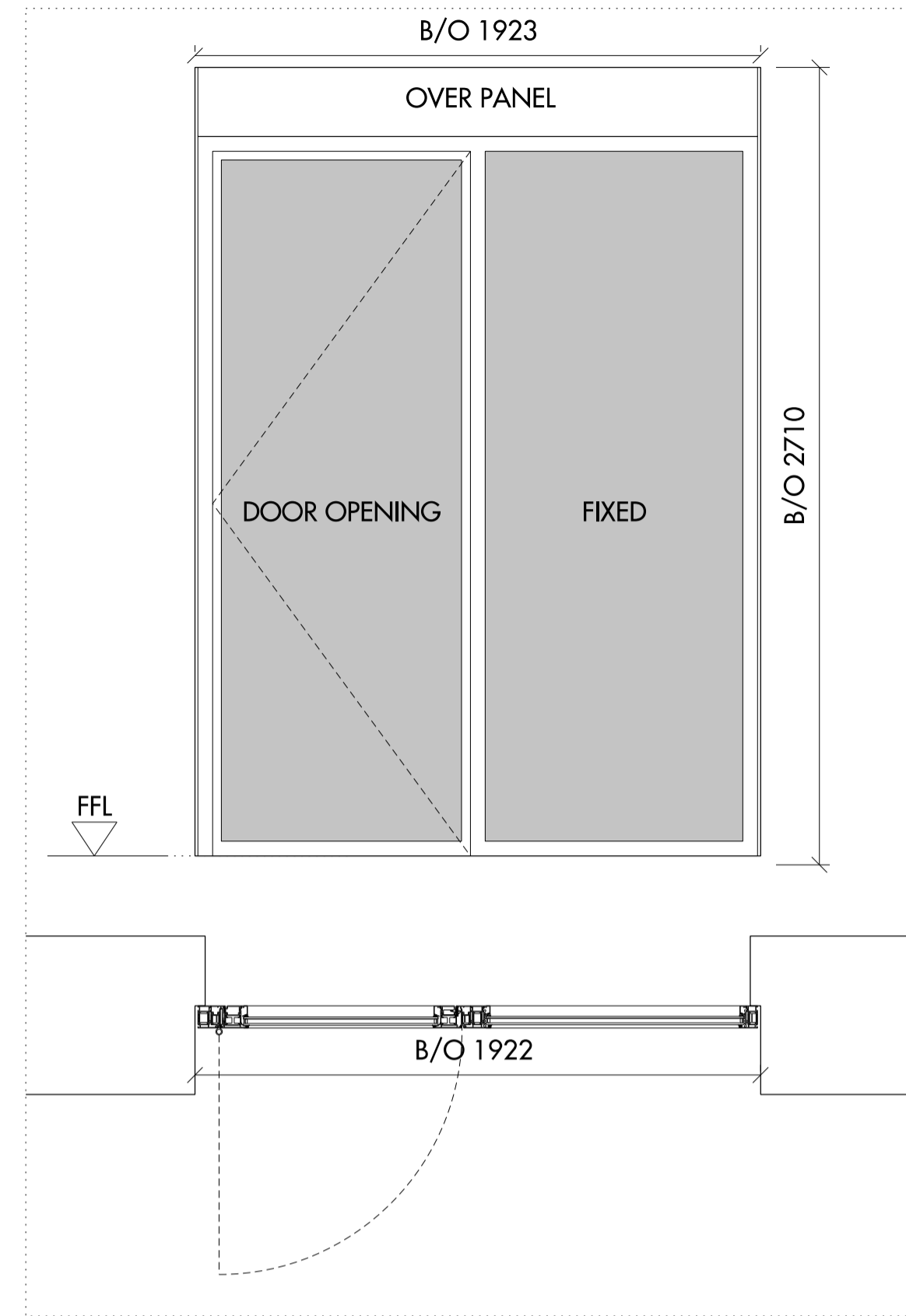
09 WIN - 405



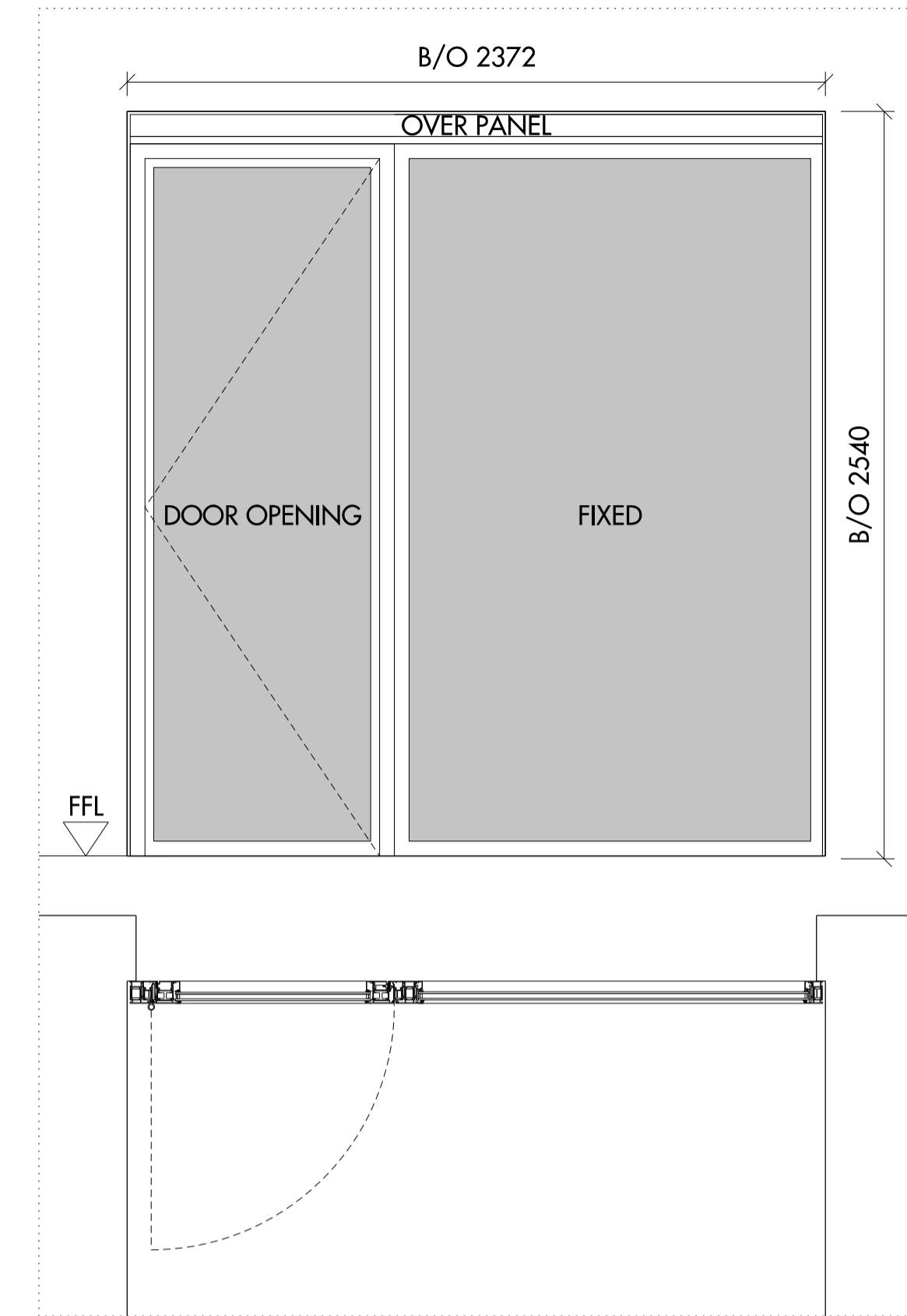
10 WIN - 406 ARRANGEMENT 01



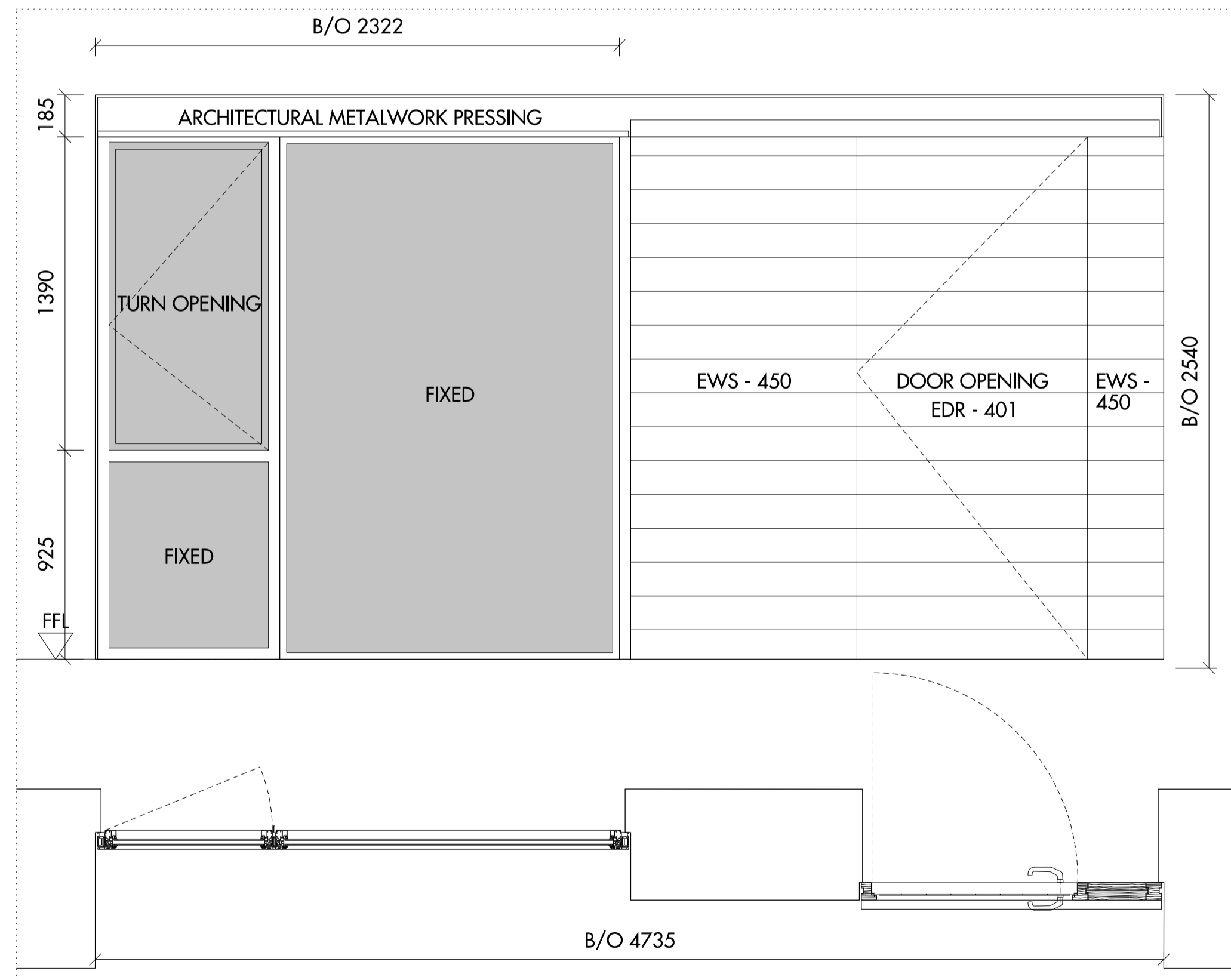
11 WIN - 406 ARRANGEMENT 02



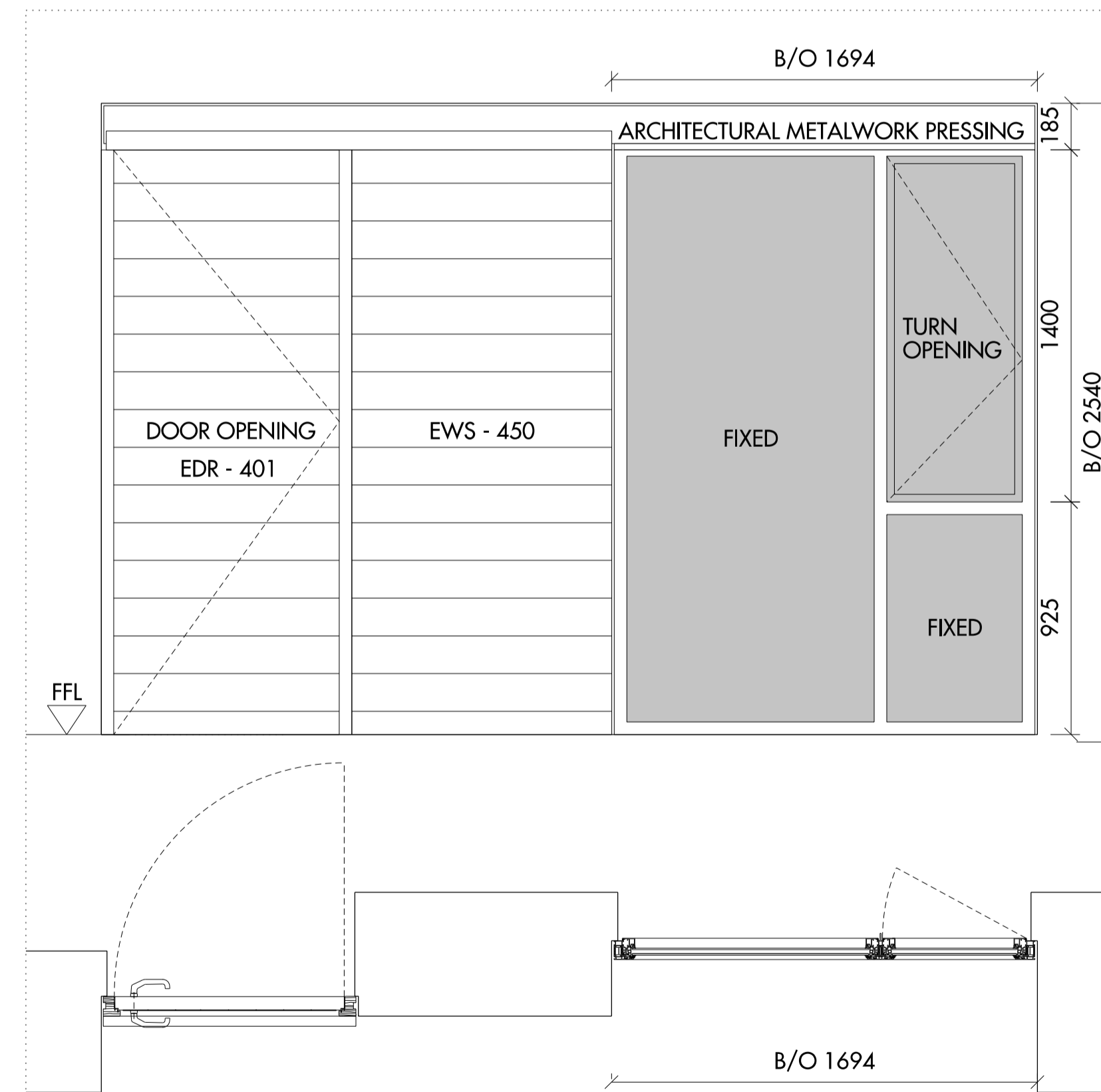
12 WIN - 407



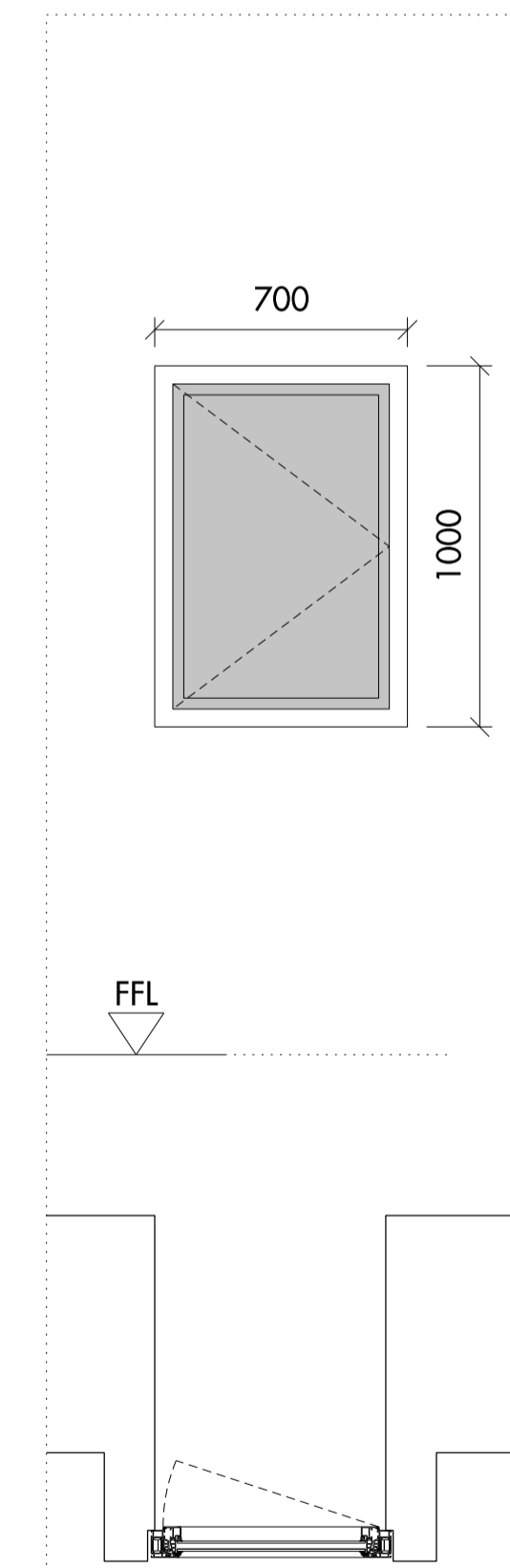
13 WIN - 408



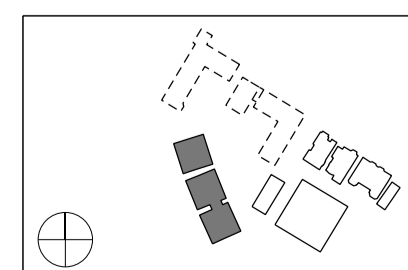
14 WIN - 409 ARRANGEMENT 01



15 WIN - 409 ARRANGEMENT 02



16 WIN - 410



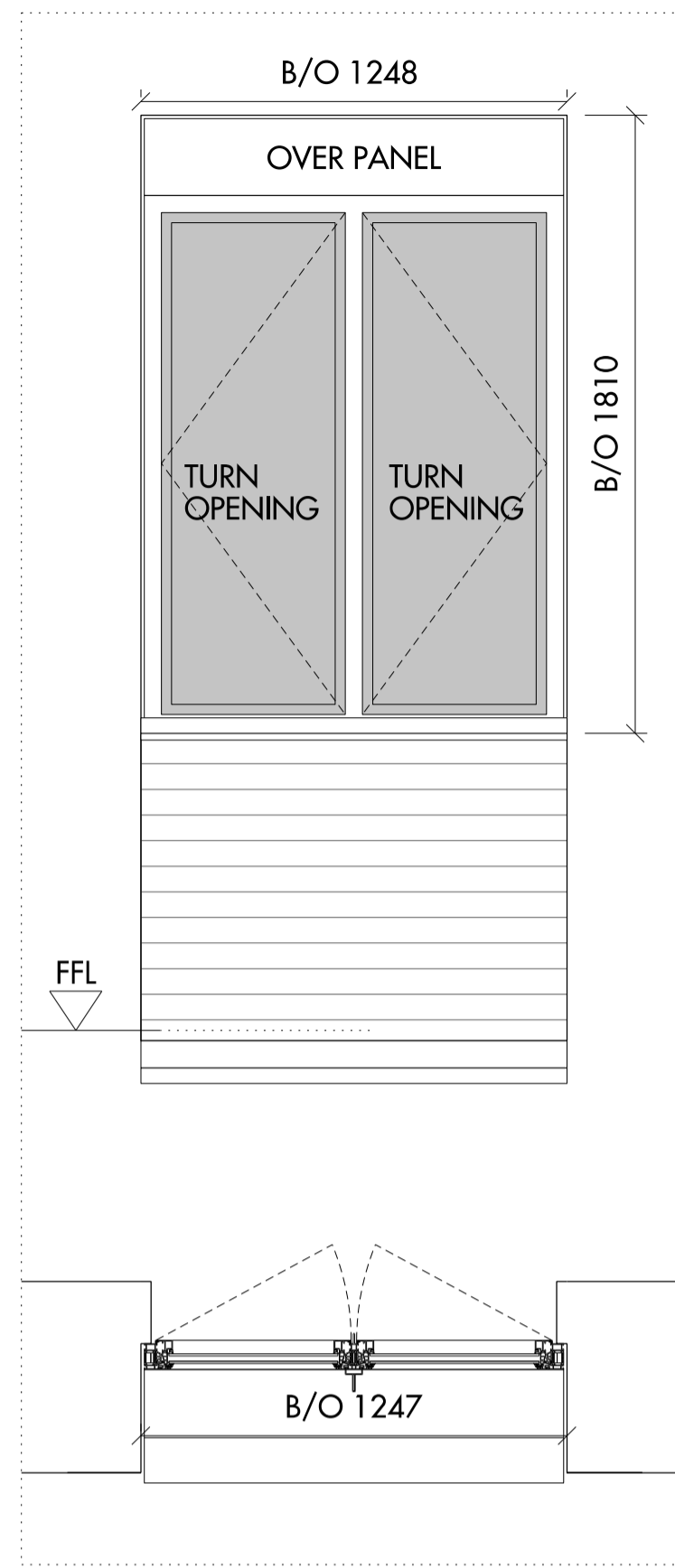
Do not scale from this drawing. Use figured dimensions only. Figured dimensions are in millimetres. All levels are in metres. All dimensions and levels shall be verified on site before proceeding with works. Detailed site survey to be carried out to verify positions and level relationships with site features and ordnance survey. Boundaries are indicative only and are to be verified by others. The architect must be notified of any discrepancy. Where building components are described in the specification as contractor designed, "construction" information relating to those components on this drawing represents design intent only.

REV	DATE	DESCRIPTION	CD
T1	05.08.14	ISSUED FOR STAGE E	NR

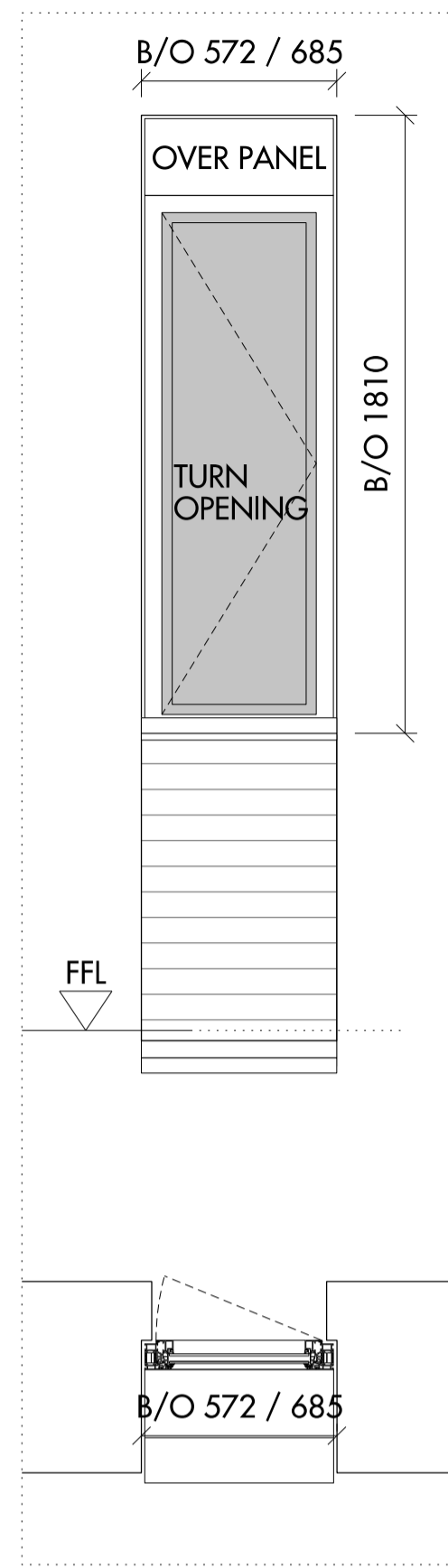
NOTES:
For technical requirements refer to window specification: 809_10_WIN_EDR_Window systems
To be read in conjunction with:
809_04_06_150 and 170 series setting out drawings
809_04_21 series drawings

Allies and Morrison
85 Southwark Street
London SE1 0HX
020 7921 0100
020 7921 0101
info@alliesandmorrison.co.uk
A&M JOB NO: 809

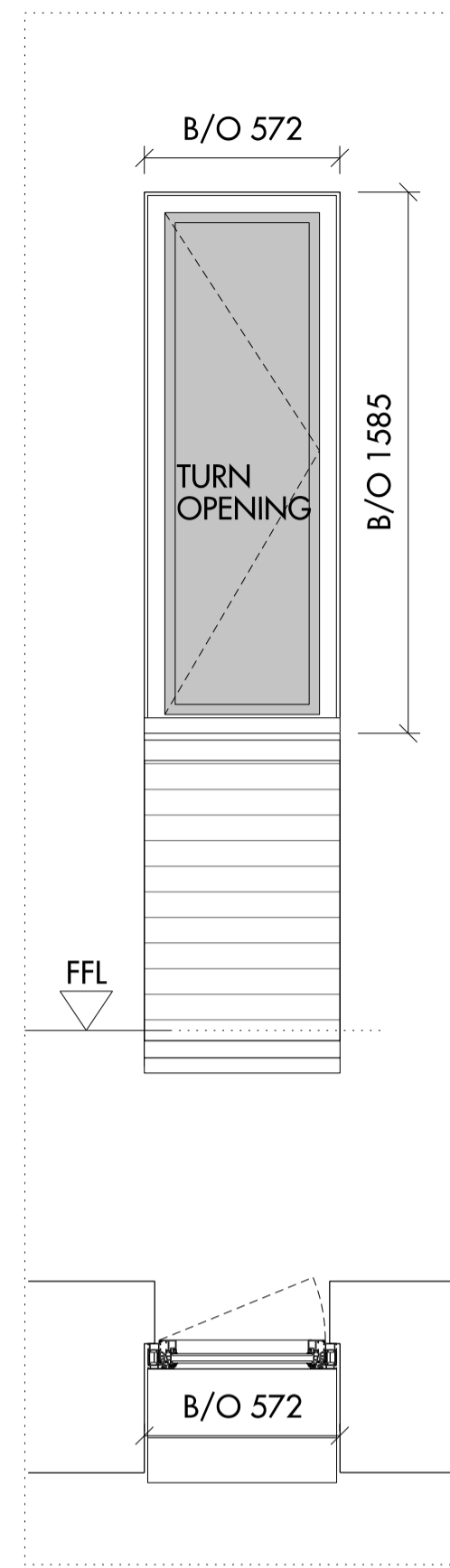
KIDDERPORE AVENUE : BLOCK F-H
WINDOW TYPES
EXTERNAL WALLS
809_04_21_401
SCALE 1:20 @A1 1:40@A3



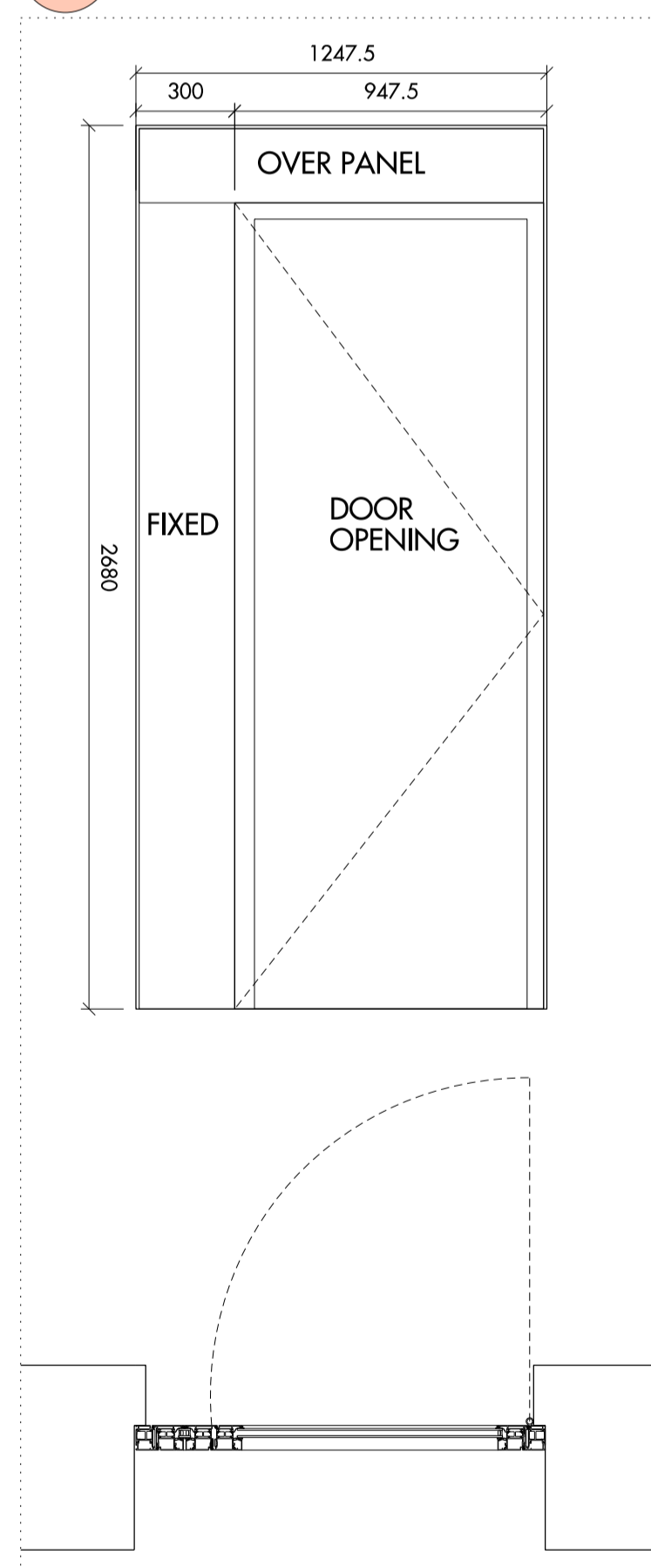
17 WIN - 411



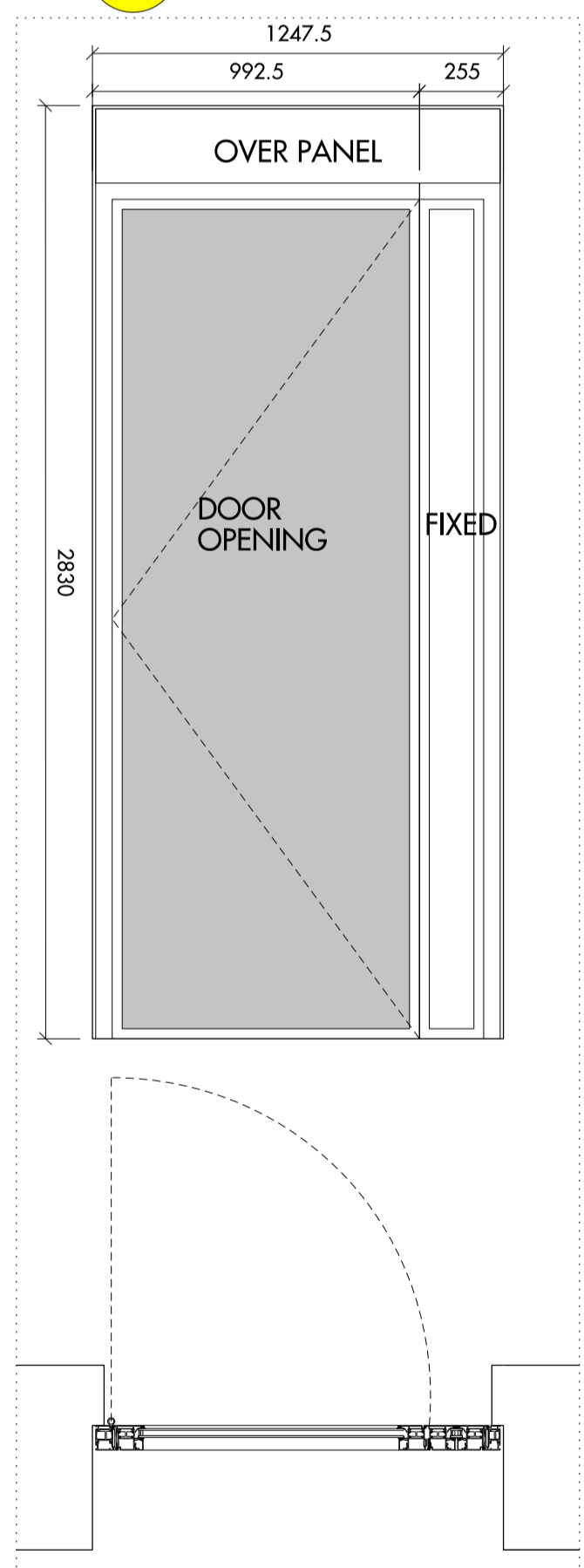
18 WIN - 412



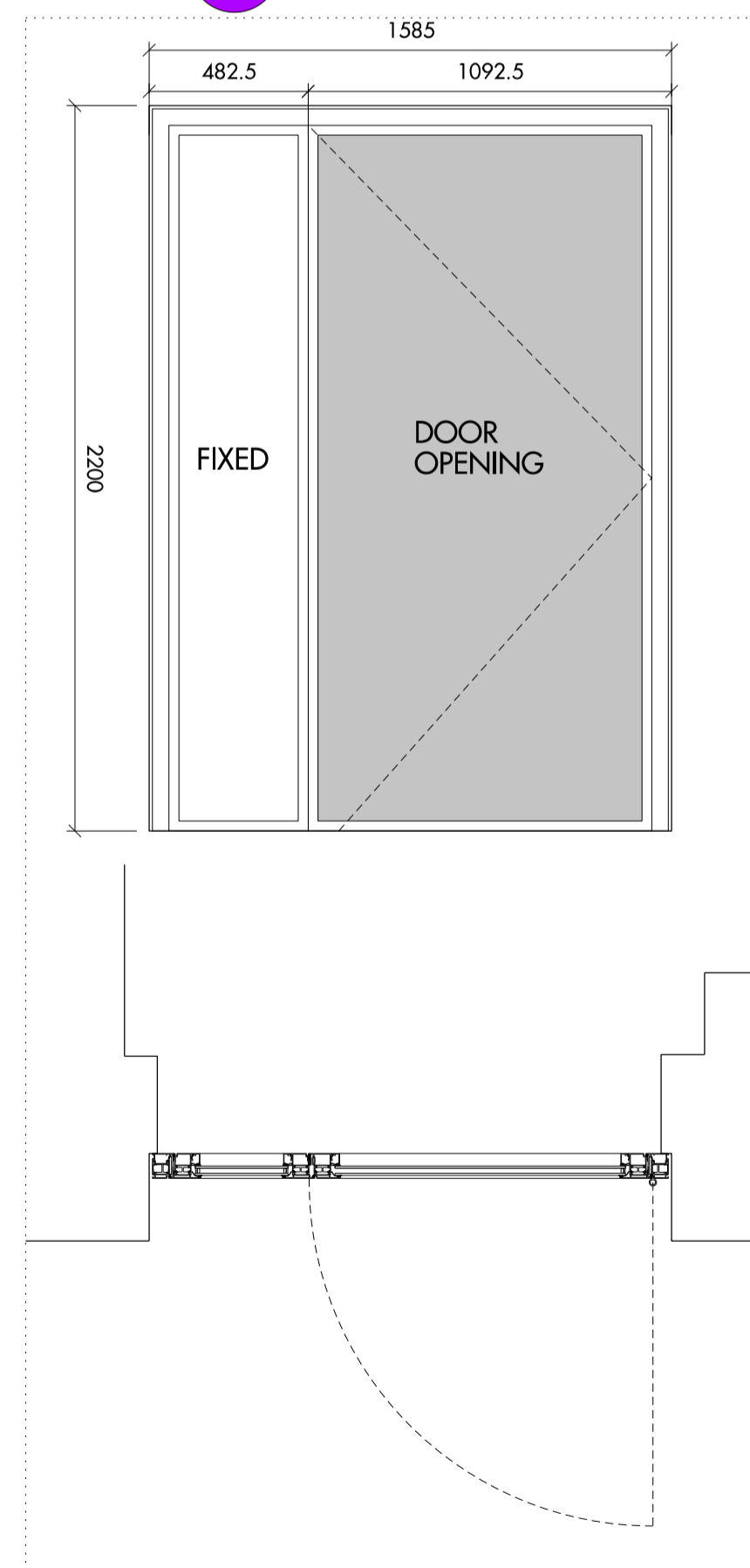
19 WIN - 413



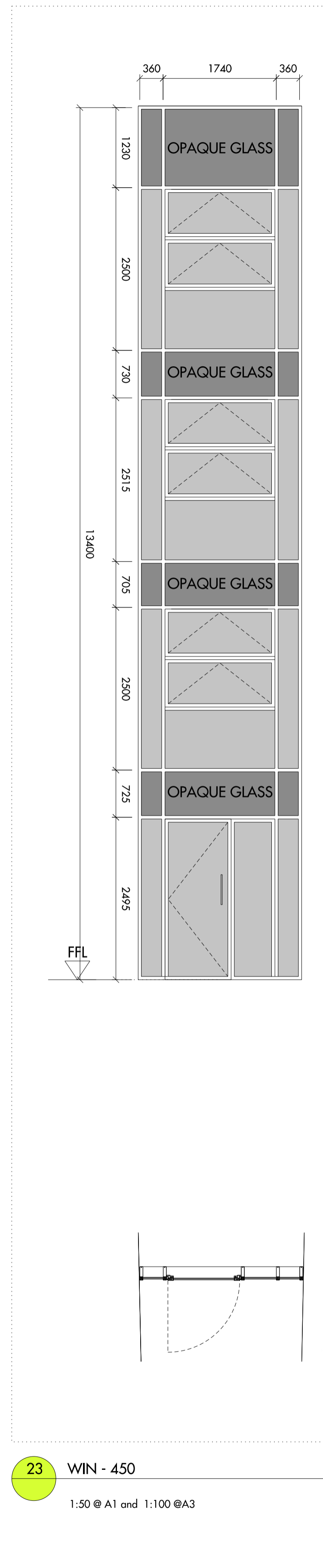
20 WIN - 420



21 WIN - 421

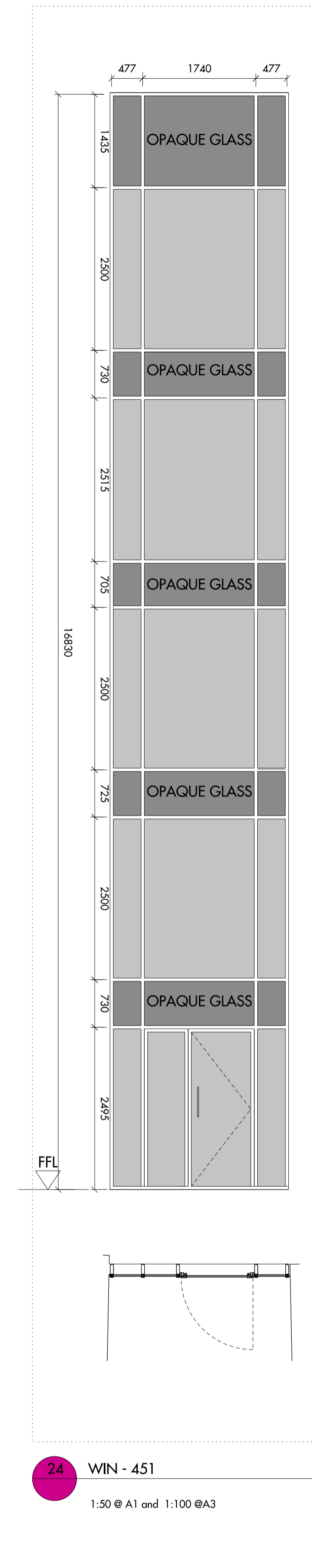


22 WIN - 422



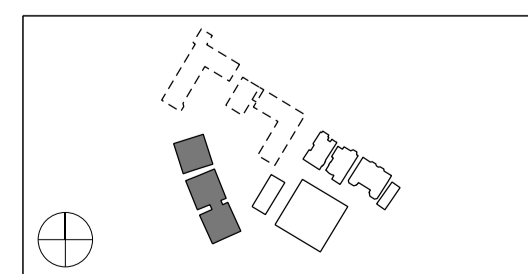
23 WIN - 450

1:50 @ A1 and 1:100 @ A3



24 WIN - 451

1:50 @ A1 and 1:100 @ A3



Do not scale from this drawing. Use figured dimensions only. Figured dimensions are in millimetres. All levels are in metres. All dimensions and levels shall be verified on site before proceeding with works. Detailed site survey to be carried out to verify positions and level relationships with site features and ordnance survey. Boundaries are indicative only and are to be verified by others. The architect must be notified of any discrepancy. Where building components are described in the specification as contractor designed, "construction" information relating to those components on this drawing represents design intent only.

REV	DATE	DESCRIPTION	CD
T1	05.08.14	ISSUED FOR STAGE E	NR

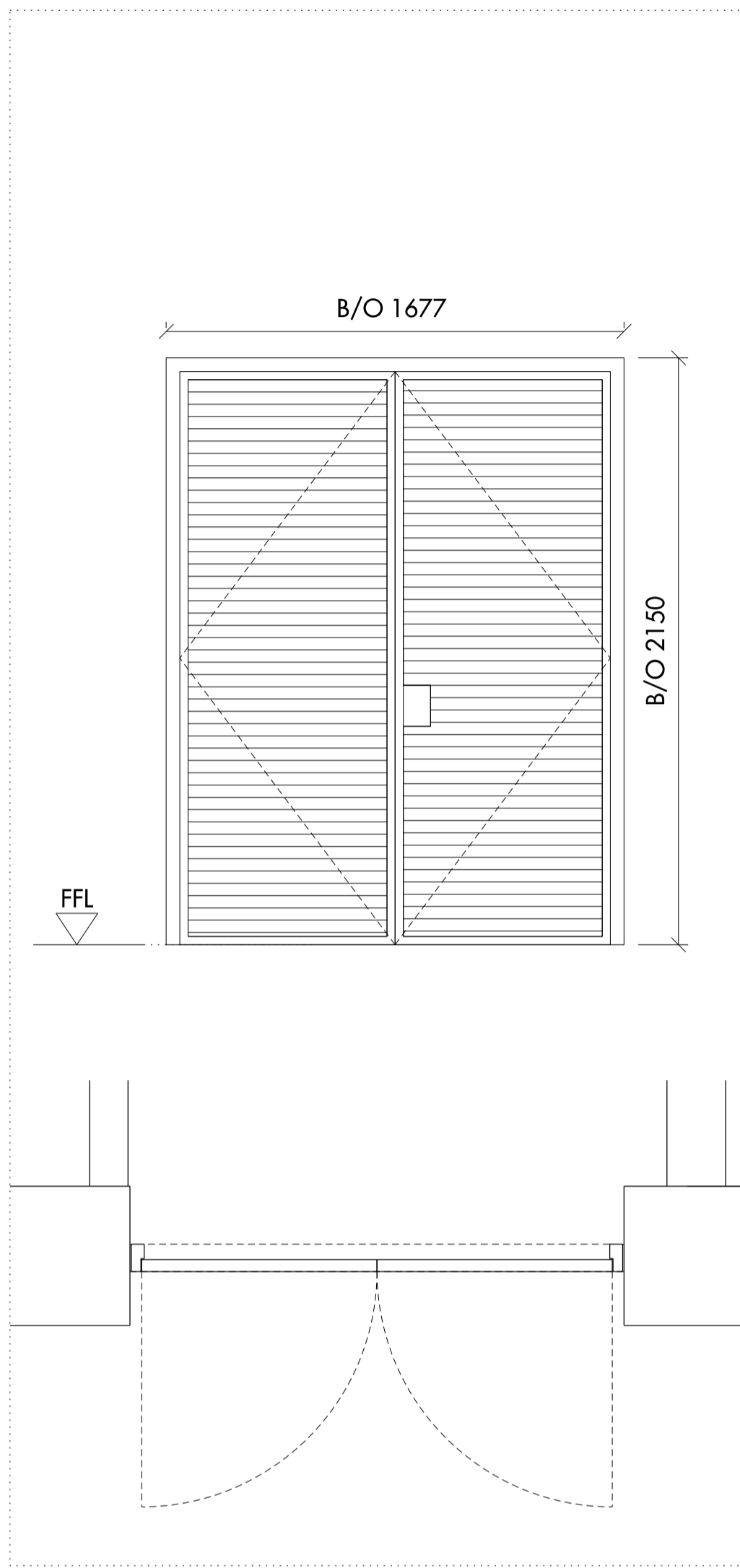
NOTES:
For technical requirements refer to window specification: 809_10_WIN_EDR_Window systems
To be read in conjunction with:
809_04_06_150 and 170 series setting out drawings
809_04_21 series drawings

Allies and Morrison
85 Southwark Street
London SE1 0HX
020 7921 0100
020 7921 0101
info@alliesandmorrison.co.uk

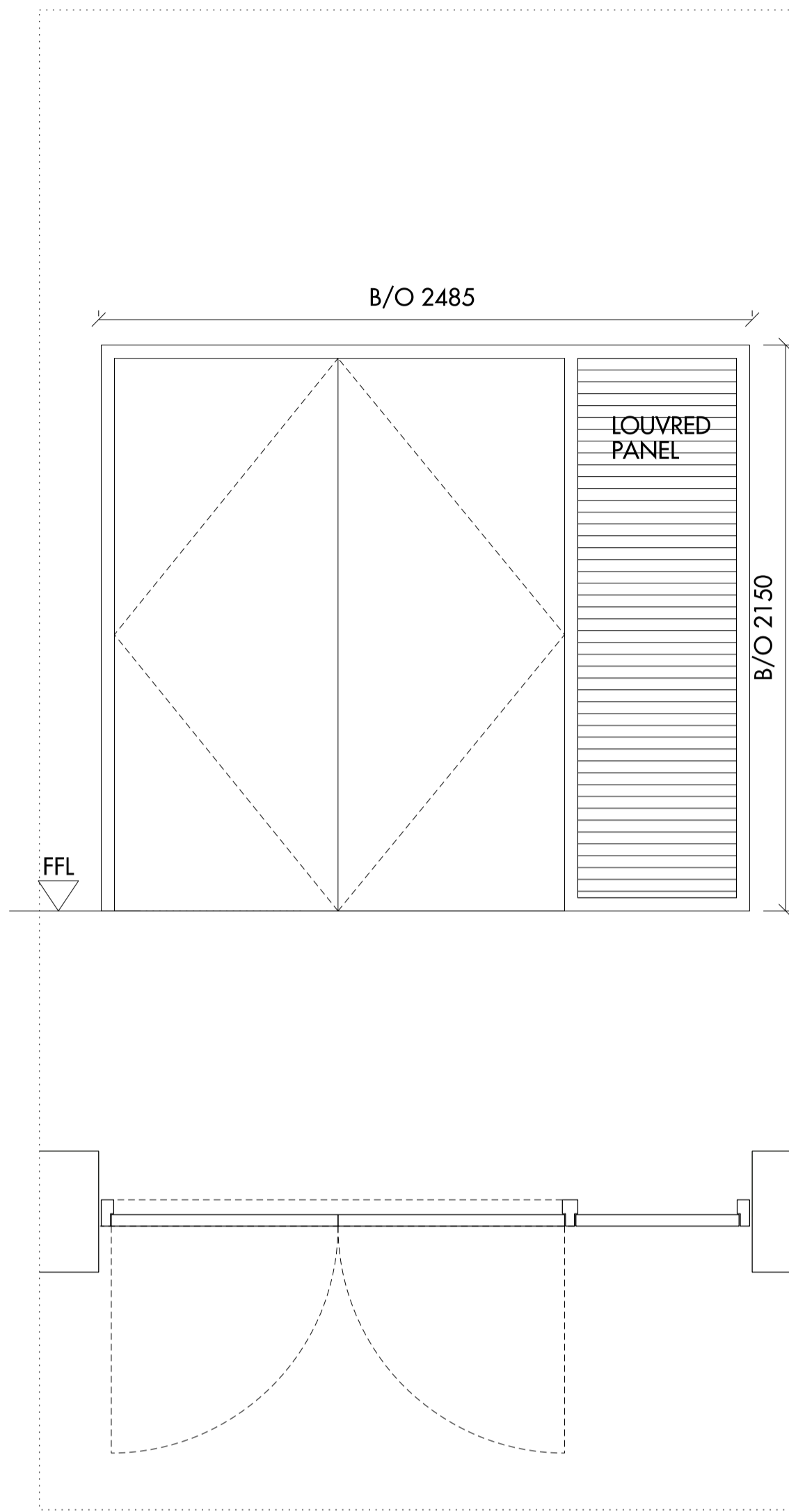
KIDDERPORE AVENUE : BLOCK F-H
WINDOW TYPES
EXTERNAL OPENINGS
809_04_21_402

A&M JOB NO: 809

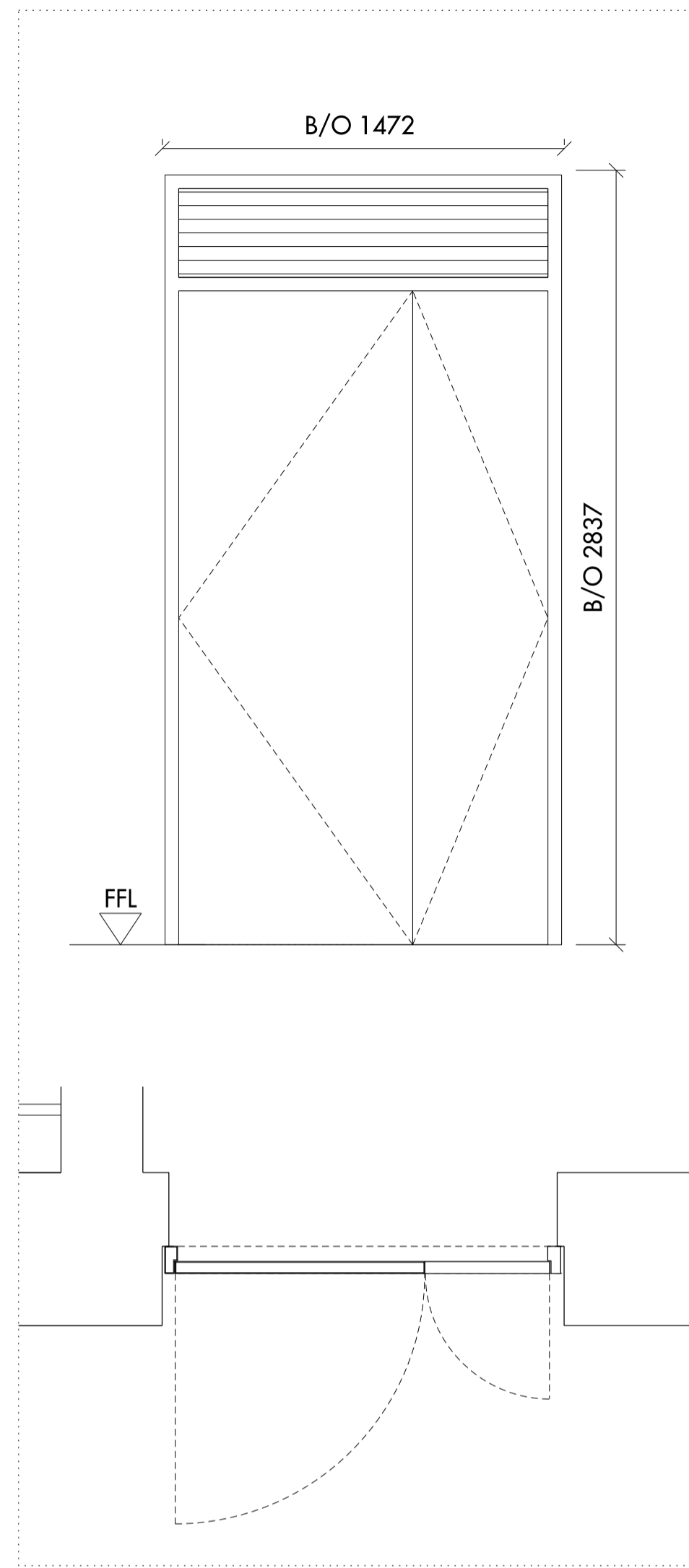
SCALE 1:20 @A1 1:40 @A3



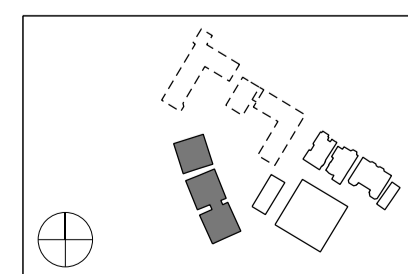
01 EDR - 420



02 WIN - 412



03 EDR - 430



Do not scale from this drawing. Use figured dimensions only. Figured dimensions are in millimetres. All levels are in metres. All dimensions and levels shall be verified on site before proceeding with works. Detailed site survey to be carried out to verify positions and level relationships with site features and ordnance survey. Boundaries are indicative only and are to be verified by others. The architect must be notified of any discrepancy. Where building components are described in the specification as contractor designed, "construction" information relating to those components on this drawing represents design intent only.

REV	DATE	DESCRIPTION	CD
T1	05.08.14	ISSUED FOR STAGE E	NR

NOTES:
 For technical requirements refer to window specification: 809_10_WIN_EDR_Window systems
 To be read in conjunction with:
 809_04_06_150 and 170 series setting out drawings
 809_04_21 series drawings

Allies and Morrison
 85 Southwark Street
 London SE1 0HX
 telephone 020 7921 0100
 facsimile 020 7921 0101
 email info@alliesandmorrison.co.uk
 A&M JOB NO: 809

KIDDERPORE AVENUE : BLOCK F-H
 EXTERNAL DOOR TYPES
 EXTERNAL WALLS
 809_04_21_403
 SCALE 1:20 @A1 1:40 @A3