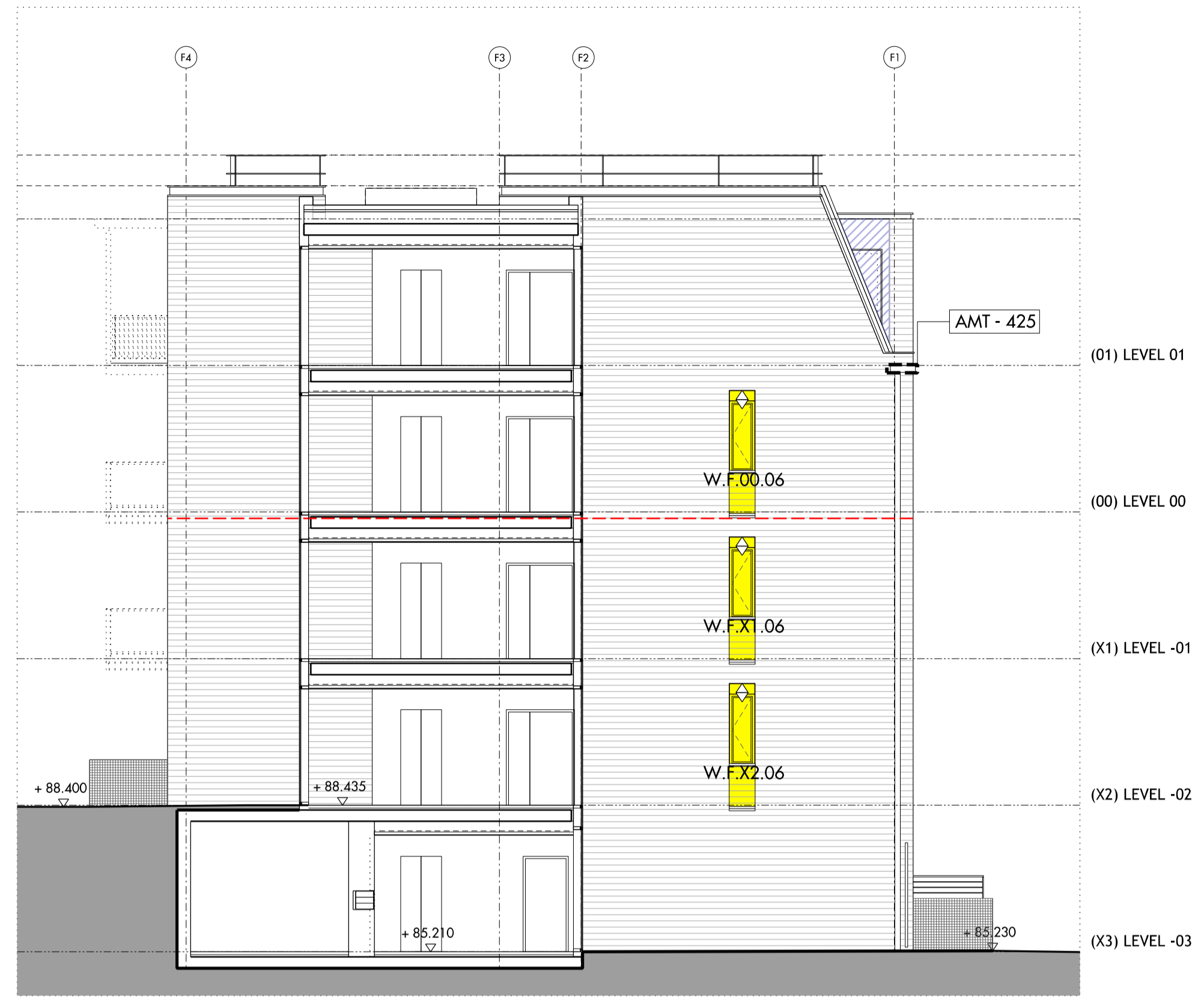


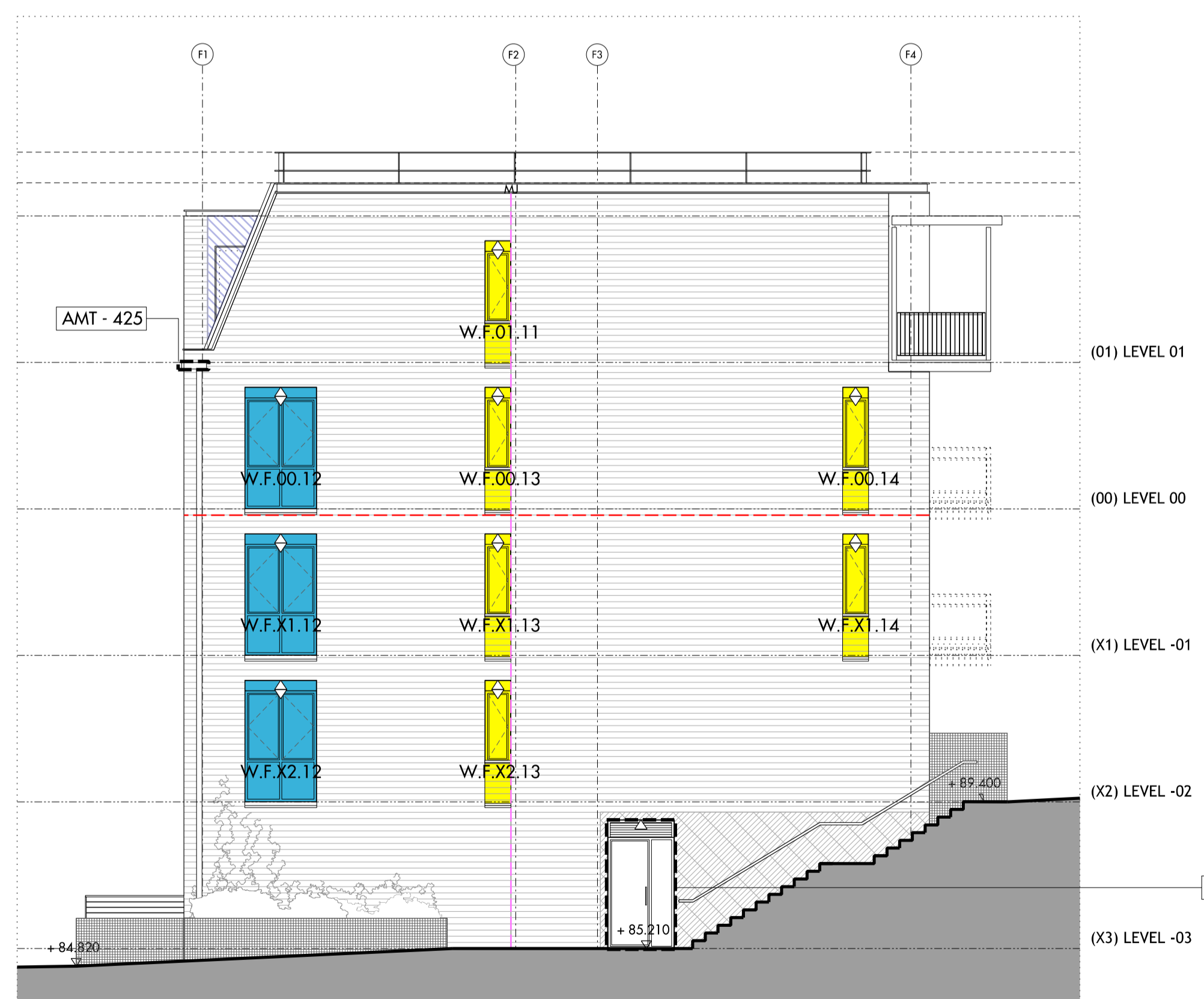
01 BLOCK F / ELEVATION - FINCHLEY ROAD



02 BLOCK F / ELEVATION - NORTH WEST



03 BLOCK F / ELEVATION - COURT YARD



04 BLOCK F / ELEVATION - SOUTH EAST

**NOTES:**  
 Drawings to be read in conjunction with:  
 - 809\_04\_06\_150 and 170 series setting out drawings  
 - 809\_04\_21 series drawings  
 - 809\_04 Window schedule  
 - 809\_10\_WIN\_EDR\_Window systems Specification  
 MVRH unit requires two air bricks per flat. For location refer to GA's and details  
 Movement joint required every 6m on the inner face of the parapet wall. Masonry restraint support angles to return in recessed balcony. Refer to Structural Engineer drawings and specification for all masonry restraint items such as masonry angles, brick ties, wall starters, reinforcement and lintels.  
 X = MINUS LEVEL FOR WINDOW REFS (eg. X1 = Site level -01)

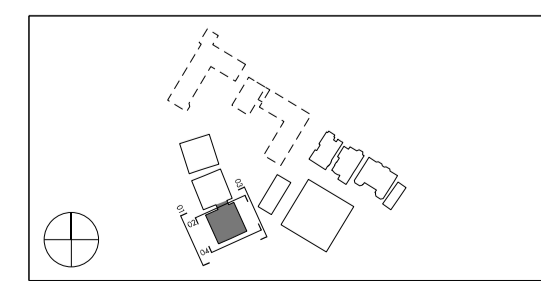
- KEY:**  
**WINDOW TYPES**
- WIN - 400 - ARRANGEMENT 01
  - WIN - 400 - ARRANGEMENT 02
  - WIN - 401 - ARRANGEMENT 01
  - WIN - 401 - ARRANGEMENT 02
  - WIN - 402 - ARRANGEMENT 01
  - WIN - 402 - ARRANGEMENT 02
  - WIN - 403
  - WIN - 404
  - WIN - 405
  - WIN - 406 - ARRANGEMENT 01
  - WIN - 406 - ARRANGEMENT 02
  - WIN - 407
  - WIN - 408
  - WIN - 409 - ARRANGEMENT 01
  - WIN - 409 - ARRANGEMENT 02
  - WIN - 410
  - WIN - 411
  - WIN - 412
  - WIN - 413
  - WIN - 420
  - WIN - 421
  - WIN - 422
  - WIN - 450
  - WIN - 451

- EXTERNAL WALL TYPES**
- EWS - 400
  - EWS - 401
  - EWS - 430
  - EWS - 450
  - EWI - 400
  - BB EWS - 400 - Brirbox

- EXTERNAL DOOR TYPES**
- EDR - 400 Single leaf residential door set
  - EDR - 401 Single leaf residential door set
  - EDR - 420 Double leaf door set to energy centre
  - EDR - 421 Double leaf door set to bulk store and bin store
  - EDR - 430 Single and a half leaf communal door set + lounge

- BRICK RECESS CILL AND SOFFIT FLASHINGS**
- PPC aluminium flashing to soffit of brick opening
  - PPC aluminium flashing to cill and soffit of brick opening
- MASONRY SUPPORT**
- Masonry support angle
  - Channel lintel
  - Masonry reinforcement
  - MJ Movement joint
  - Movement joint inside parapet every 6m
  - PP Parapet post
  - Steel post

- ARCHITECTURAL METALWORK**
- AMT - 425 Feature metal panel below eaves Refer to A&M Specification



Do not scale from this drawing. Use figured dimensions only. Figured dimensions are in millimetres. All levels are in metres. All dimensions and levels shall be verified on site before proceeding with works. Detailed site survey to be carried out to verify positions and level relationships with site features and ordinance survey. Boundaries are indicative only and are to be verified by others. The architect must be notified of any discrepancy. Where building components are described in the specification as contractor designed, "construction" information relating to those components on this drawing represents design intent only.

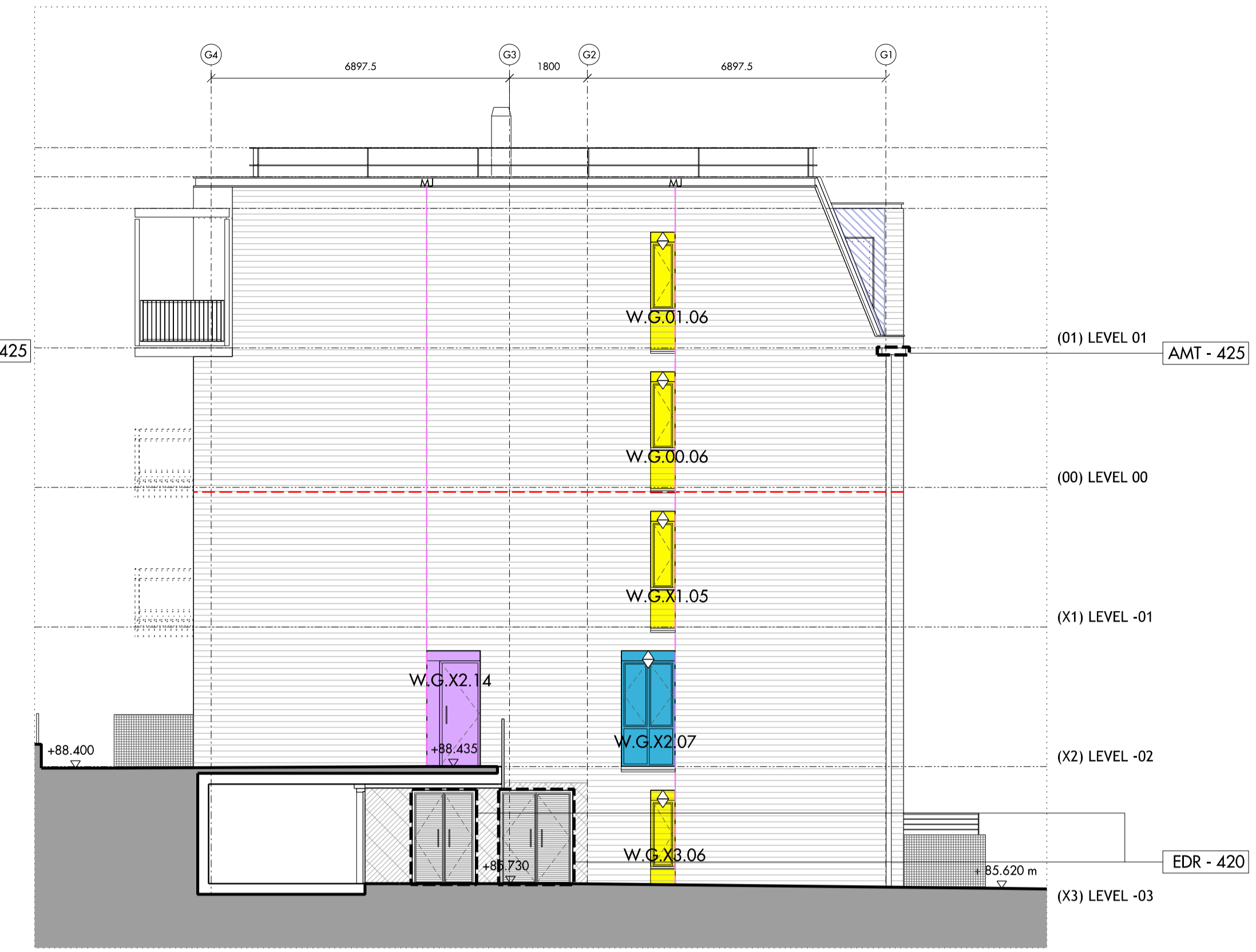
REV	DATE	DESCRIPTION	CD
T1	11.07.2014	ISSUED FOR STAGE E	NR
T2	05.08.2014	ISSUED FOR STAGE E	NR

Allies and Morrison  
 85 Southwark Street  
 London SE1 0HX  
 020 7921 0100  
 020 7921 0101  
 info@alliesandmorrison.co.uk  
 telephone  
 facsimile  
 email  
 A&M JOB NO: 809

KIDDERPORE AVENUE : BLOCK F  
**EXTERNAL ELEVATIONS**  
**EXTERNAL WALL SCOPE**  
 809\_04\_21\_200  
 SCALE 1:100@A1 1:200@A3



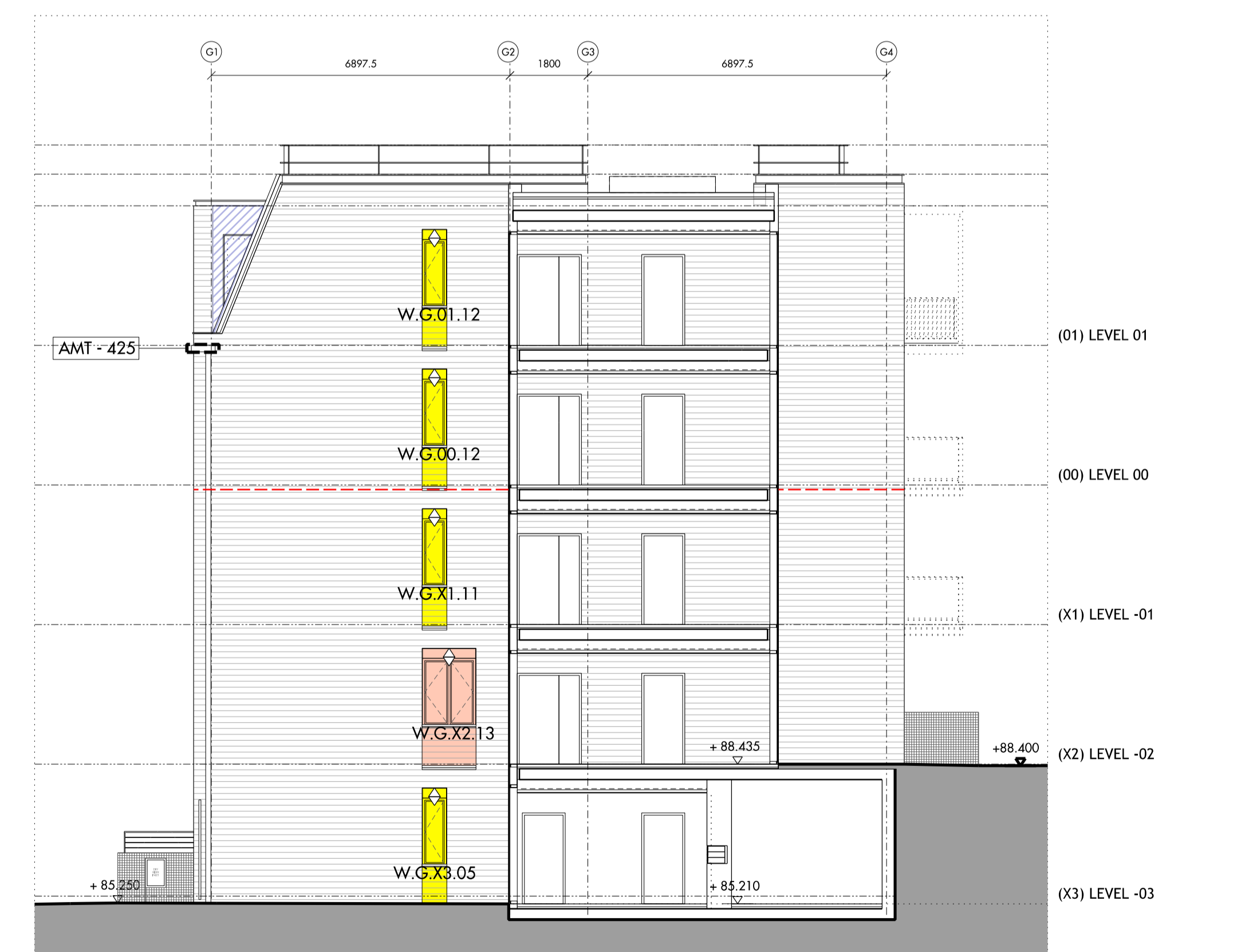
01 BLOCK G / ELEVATION - FINCHLEY ROAD



02 BLOCK G / ELEVATION - NORTH WEST



03 BLOCK G / ELEVATION - COURT YARD



04 BLOCK G / ELEVATION - SOUTH EAST

**NOTES:**  
 Drawings to be read in conjunction with:  
 - 809\_04\_06\_150 and 170 series setting out drawings  
 - 809\_04\_21 series drawings  
 - 809\_04 Window schedule  
 - 809\_10\_WIN\_EDR\_Window systems Specification  
 MJFR unit requires two air bricks per flat. For location refer to GA's and details  
 Movement joint required every 6m on the inner face of the parapet wall. Masonry restraint support angles to return in recessed balcony. Refer to Structural Engineer drawings and specification for all masonry restraint items such as masonry angles, brick ties, wall starters, reinforcement and lints.  
 X = MINUS LEVEL FOR WINDOW REFS (eg. X1 = Site level -01)

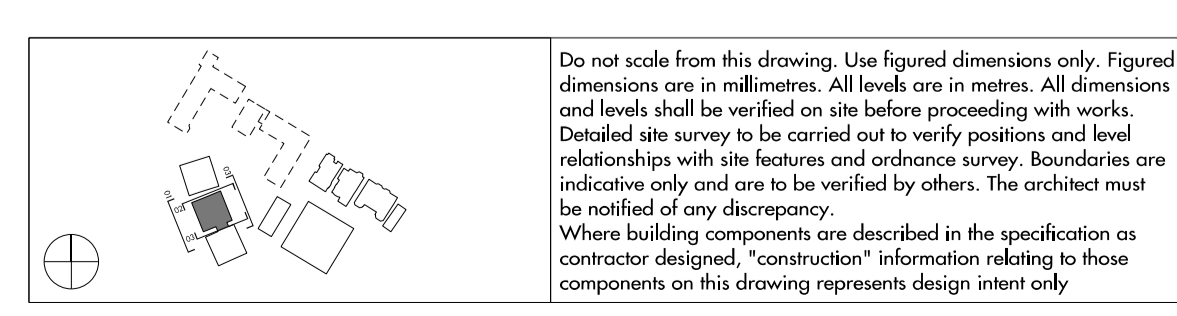
- KEY:**  
**WINDOW TYPES**
- WIN - 400 - ARRANGEMENT 01
  - WIN - 400 - ARRANGEMENT 02
  - WIN - 401 - ARRANGEMENT 01
  - WIN - 401 - ARRANGEMENT 02
  - WIN - 402 - ARRANGEMENT 01
  - WIN - 402 - ARRANGEMENT 02
  - WIN - 403
  - WIN - 404
  - WIN - 405
  - WIN - 406 - ARRANGEMENT 01
  - WIN - 406 - ARRANGEMENT 02
  - WIN - 407
  - WIN - 408
  - WIN - 409 - ARRANGEMENT 01
  - WIN - 409 - ARRANGEMENT 02
  - WIN - 410
  - WIN - 411
  - WIN - 412
  - WIN - 413
  - WIN - 420
  - WIN - 421
  - WIN - 422
  - WIN - 450
  - WIN - 451

- EXTERNAL WALL TYPES**
- EWS - 400
  - EWS - 401
  - EWS - 430
  - EWS - 450
  - EWI - 400
  - BB EWS - 400 - Birdbox

- EXTERNAL DOOR TYPES**
- EDR - 400 Single leaf residential door set
  - EDR - 401 Single leaf residential door set
  - EDR - 420 Double leaf door set to energy centre
  - EDR - 421 Double leaf door set to bulk store and bin store
  - EDR - 430 Single and a half leaf communal door set + louvre

- BRICK RECESS CILL AND SOFFIT FLASHINGS**
- PPC aluminium flashing to soffit of brick opening
  - PPC aluminium flashing to cill and soffit of brick opening
- MASONRY SUPPORT**
- Refer to Structural Engineer drawings and specifications for details
  - Masonry support angle
  - Channel lintel
  - Masonry reinforcement
  - MJ Movement joint
  - MJ Movement joint inside parapet every 6m
  - PP Parapet post
  - SP Steel post

- ARCHITECTURAL METALWORK**
- AMT - 425 Feature metal panel below eaves Refer to A&M Specification



REV	DATE	DESCRIPTION	CKD
T1	11.07.2014	ISSUED FOR STAGE E	NR
T2	05.08.2014	ISSUED FOR STAGE E	NR

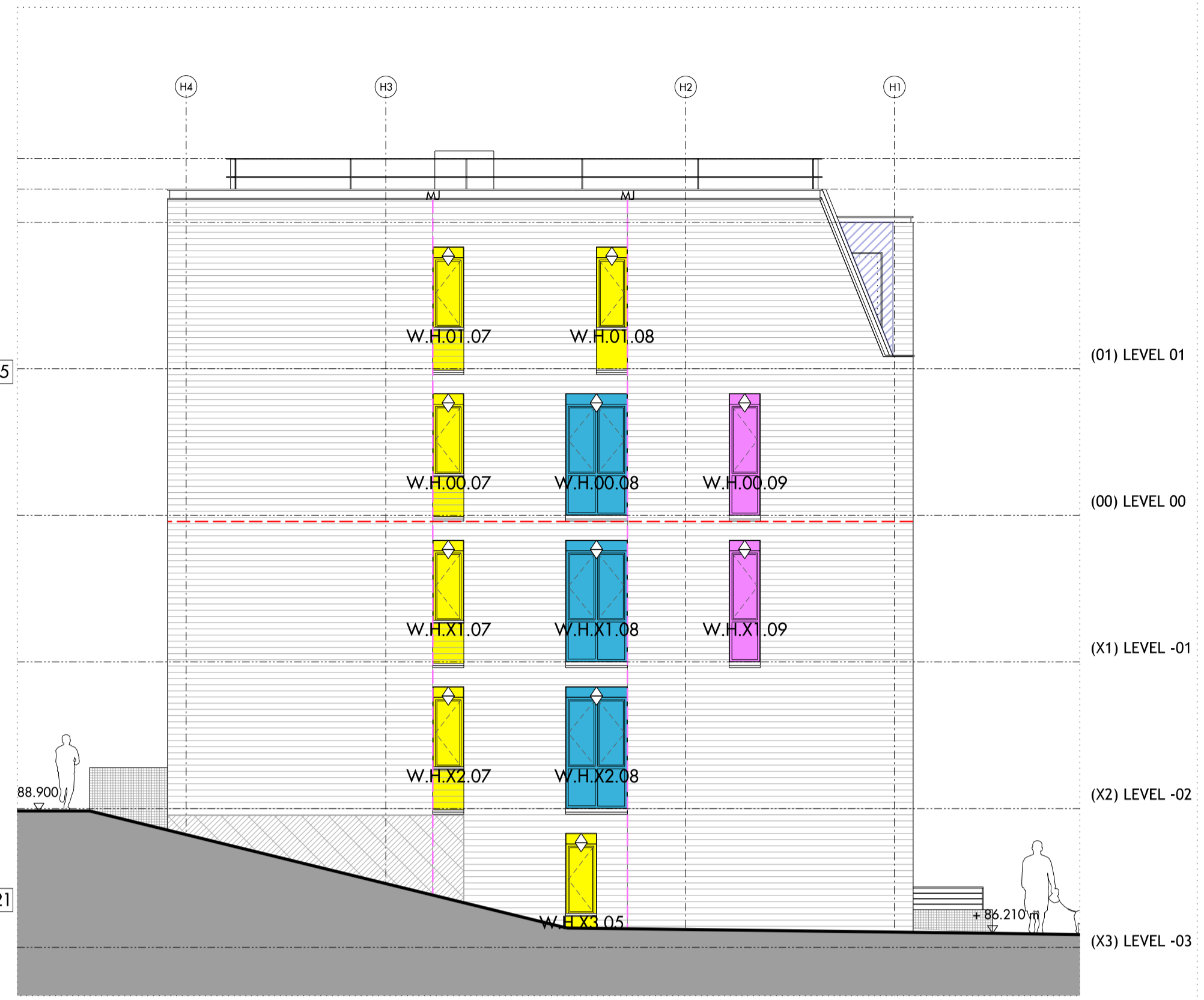
Allies and Morrison  
 85 Southwark Street  
 London SE1 0HX  
 020 7921 0100  
 020 7921 0101  
 info@alliesandmorrison.co.uk  
 telephone  
 facsimile  
 email  
 A&M JOB NO: 809

KIDDERPORE AVENUE : BLOCK G  
 EXTERNAL ELEVATIONS  
 EXTERNAL WALL SCOPE  
 809\_04\_21\_210  
 SCALE 1:100@A1 1:200@A3



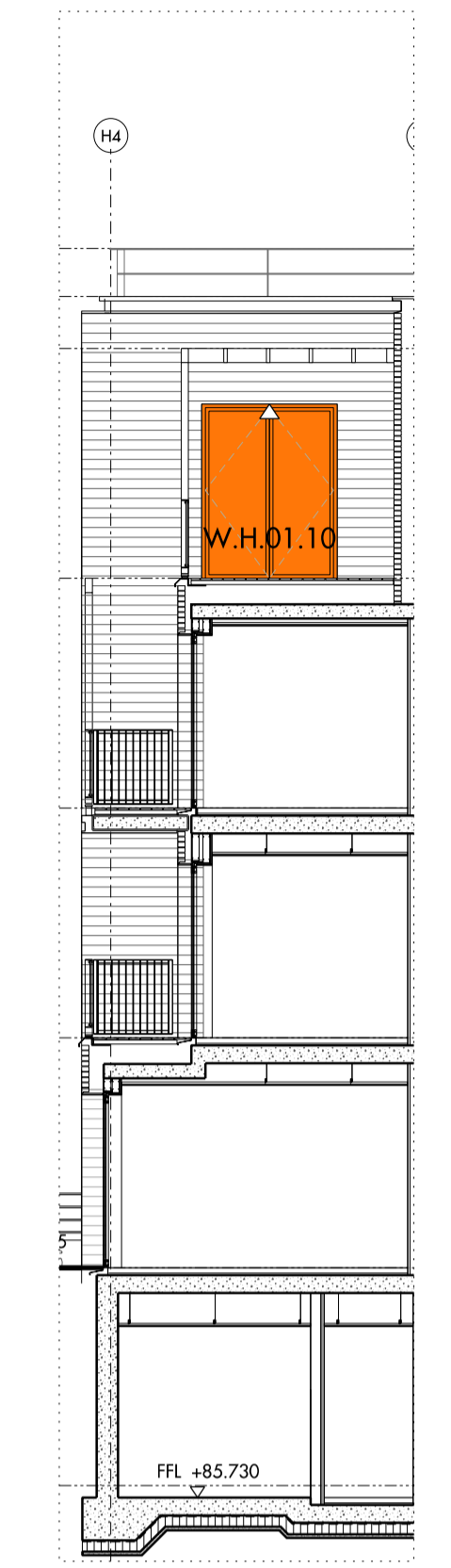
01 BLOCK H / ELEVATION - FINCHLEY ROAD

EDR - 401



02 BLOCK H / ELEVATION - NORTH WEST

EDR - 421



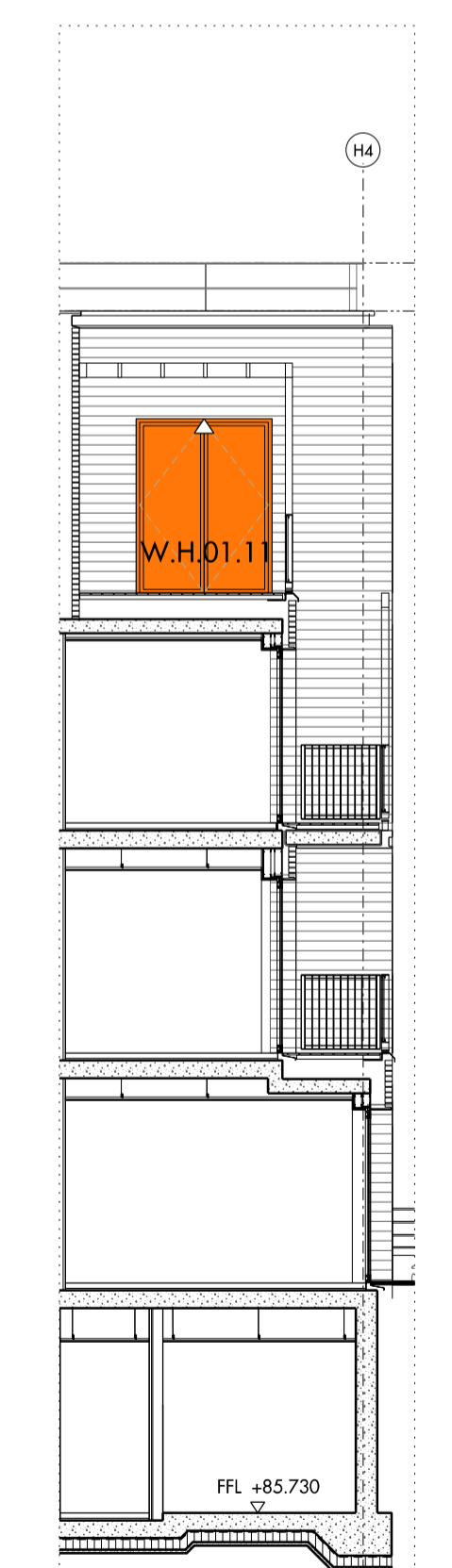
05 BLOCK H / ELEVATION AA



03 BLOCK H / ELEVATION - COURT YARD



04 BLOCK H / ELEVATION - SOUTH EAST



06 BLOCK H / ELEVATION BB

**NOTES:**  
 Drawings to be read in conjunction with:  
 - 809\_04\_06\_150 and 170 series setting out drawings  
 - 809\_04\_21 series drawings  
 - 809\_04 Window schedule  
 - 809\_10\_WIN\_EDR\_Window systems Specification  
 MVR unit requires two air bricks per flat. For location refer to GA's and details  
 Movement joint required every 6m on the inner face of the parapet wall. Masonry restraint support angles to return in recessed balcony. Refer to Structural Engineer drawings and specification for all masonry restraint items such as masonry angles, brick ties, wall starters, reinforcement and lintels.  
 X = MINUS LEVEL FOR WINDOW REFS (eg. X1 = Site level -01)

- KEY:**  
**WINDOW TYPES**
- WIN - 400 - ARRANGEMENT 01
  - WIN - 400 - ARRANGEMENT 02
  - WIN - 401 - ARRANGEMENT 01
  - WIN - 401 - ARRANGEMENT 02
  - WIN - 402 - ARRANGEMENT 01
  - WIN - 402 - ARRANGEMENT 02
  - WIN - 403
  - WIN - 404
  - WIN - 405
  - WIN - 406 - ARRANGEMENT 01
  - WIN - 406 - ARRANGEMENT 02
  - WIN - 407
  - WIN - 408
  - WIN - 409 - ARRANGEMENT 01
  - WIN - 409 - ARRANGEMENT 02
  - WIN - 410
  - WIN - 411
  - WIN - 412
  - WIN - 413
  - WIN - 420
  - WIN - 421
  - WIN - 422
  - WIN - 450
  - WIN - 451

- EXTERNAL WALL TYPES**
- EWS - 400
  - EWS - 401
  - EWS - 430
  - EWS - 450
  - EWI - 400
  - BB EWS - 400 - Birrbox

- EXTERNAL DOOR TYPES**
- EDR - 400 Single leaf residential door set
  - EDR - 401 Single leaf residential door set
  - EDR - 420 Double leaf door set to energy centre
  - EDR - 421 Double leaf door set to bulk store and bin store
  - EDR - 430 Single and a half leaf communal door set + louvre

- BRICK RECESS CILL AND SOFFIT FLASHINGS**
- PPC aluminium flashing to soffit of brick opening
  - PPC aluminium flashing to cill and soffit of brick opening
- MASONRY SUPPORT**
- Refer to Structural Engineer drawings and specifications for details
  - Masonry support angle
  - Channel lintel
  - Masonry reinforcement
  - MJ Movement joint
  - Movement joint inside parapet every 6m
  - PP Parapet post
  - Steel post
- ARCHITECTURAL METALWORK**
- AMT - 425 Feature metal panel below eaves Refer to A&M Specification

Do not scale from this drawing. Use figured dimensions only. Figured dimensions are in millimetres. All levels are in metres. All dimensions and levels shall be verified on site before proceeding with works. Detailed site survey to be carried out to verify positions and level relationships with site features and ordinance survey. Boundaries are indicative only and are to be verified by others. The architect must be notified of any discrepancy. Where building components are described in the specification as contractor designed, "construction" information relating to those components on this drawing represents design intent only.

REV	DATE	DESCRIPTION	CD
T1	11.07.2014	ISSUED FOR STAGE E	NR
T2	05.08.2014	ISSUED FOR STAGE E	NR

REV	DATE	DESCRIPTION	CD
T1	11.07.2014	ISSUED FOR STAGE E	NR
T2	05.08.2014	ISSUED FOR STAGE E	NR

Allies and Morrison  
 85 Southwark Street  
 London SE1 0HX  
 telephone 020 7921 0100  
 facsimile 020 7921 0101  
 email info@alliesandmorrison.co.uk  
 A&M JOB NO: 809

KIDDERPORE AVENUE : BLOCK H  
 EXTERNAL ELEVATIONS  
 EXTERNAL WALL SCOPE  
 809\_04\_21\_220  
 SCALE 1:100@A1 1:200@A3