

existing walls to be made good and retained



AA

BB

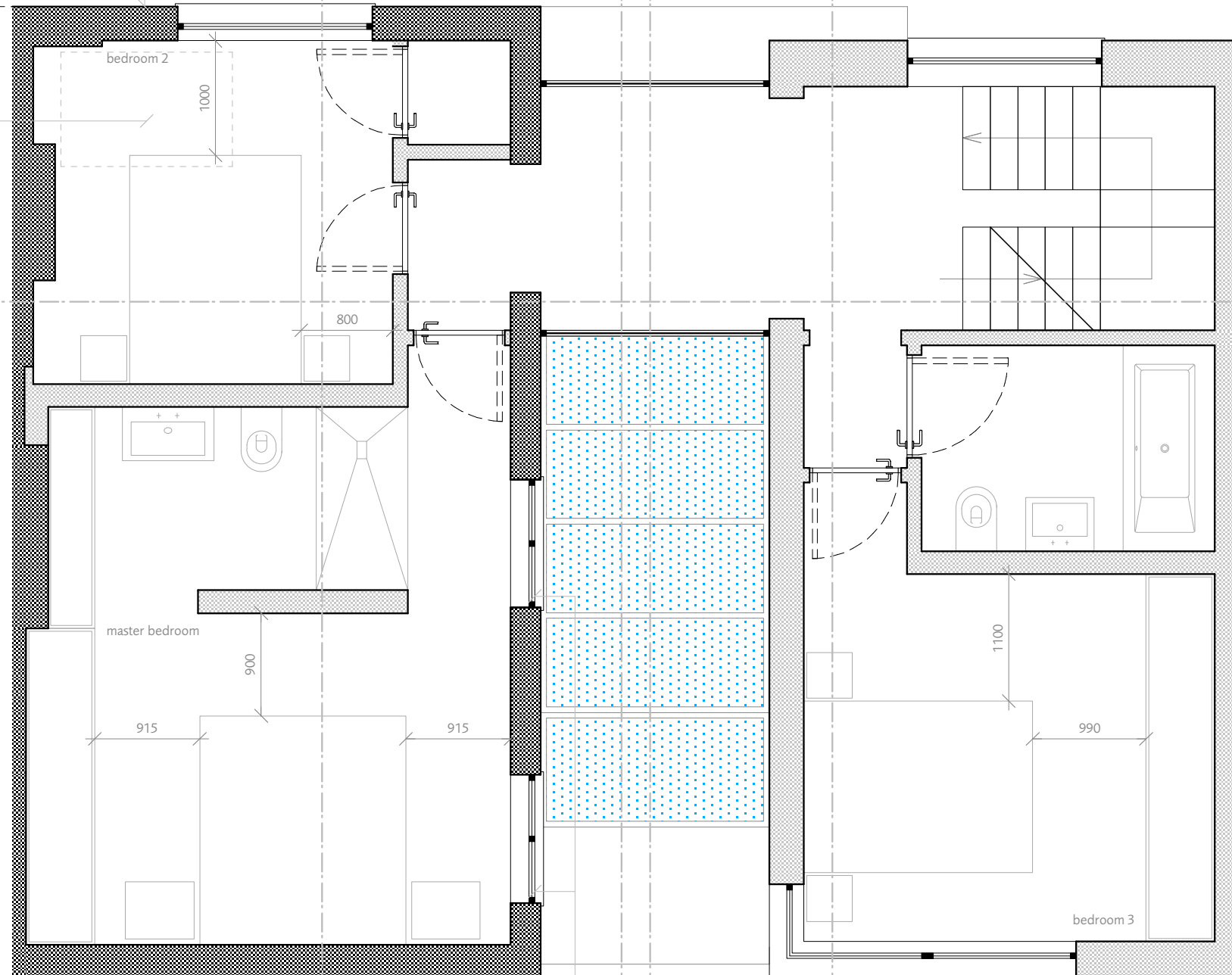
CC

DD

© Dols Wong Architects. this drawing may not be copied, altered or reproduced in any way or passed to a third party without their written authority. report all discrepancies to the architects or engineers before commencing construction or fabrication. read in conjunction with all other relevant architects and engineer drawings, schedules and specifications. do not scale off this drawing.ref. noted dims only

potential position for a through-floor lift

EE



existing openings to be retained

c 26.08.14
for planning

proposed first floor plan **122c**

102, Camden Mews
London NW1 9AG 1108
1:50 @A3

Dols Wong
architects

The Studio
61, Brondesbury Road
London NW6 6BP
44 (0)20 7372 2121 architects@dols Wong.com