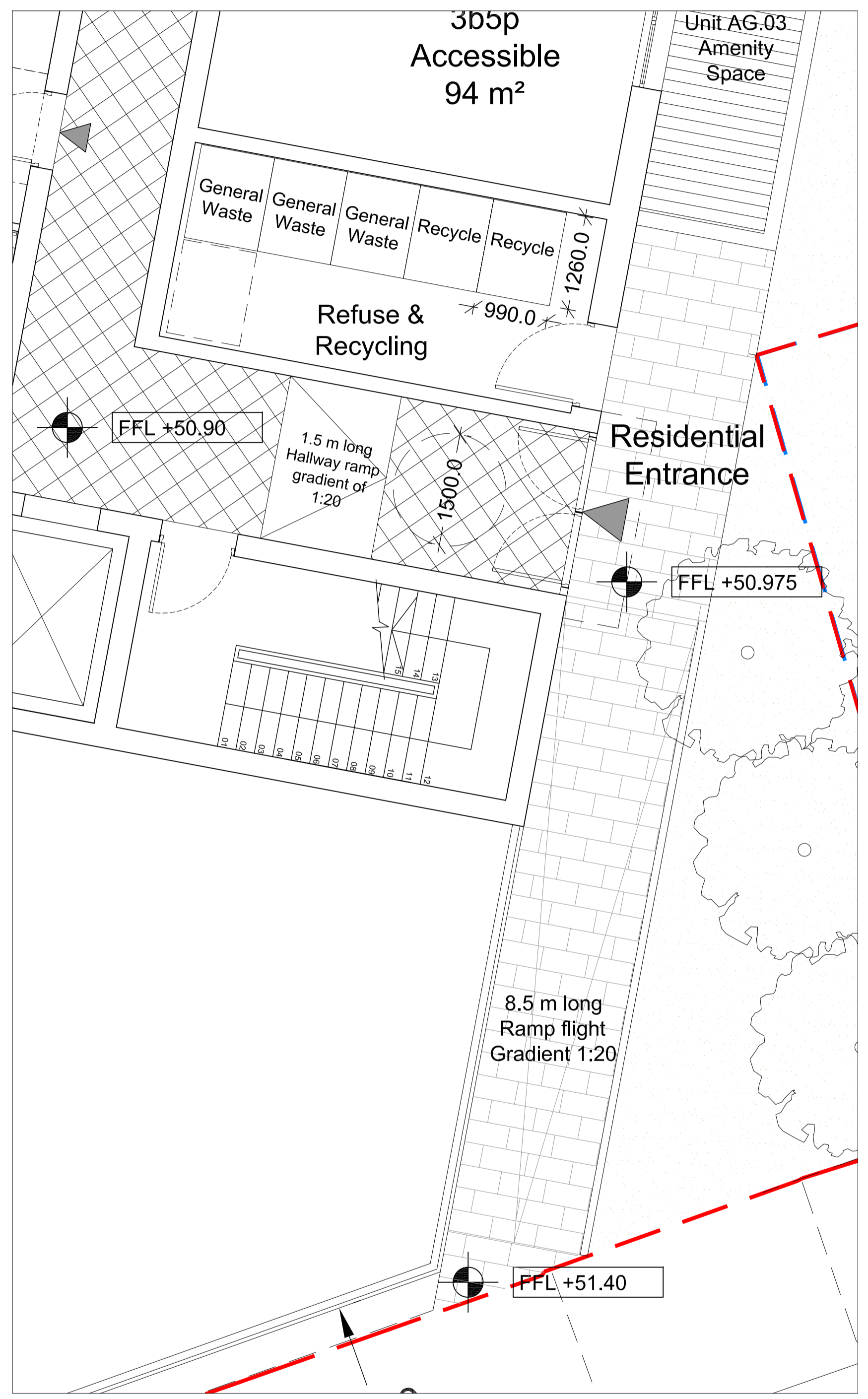
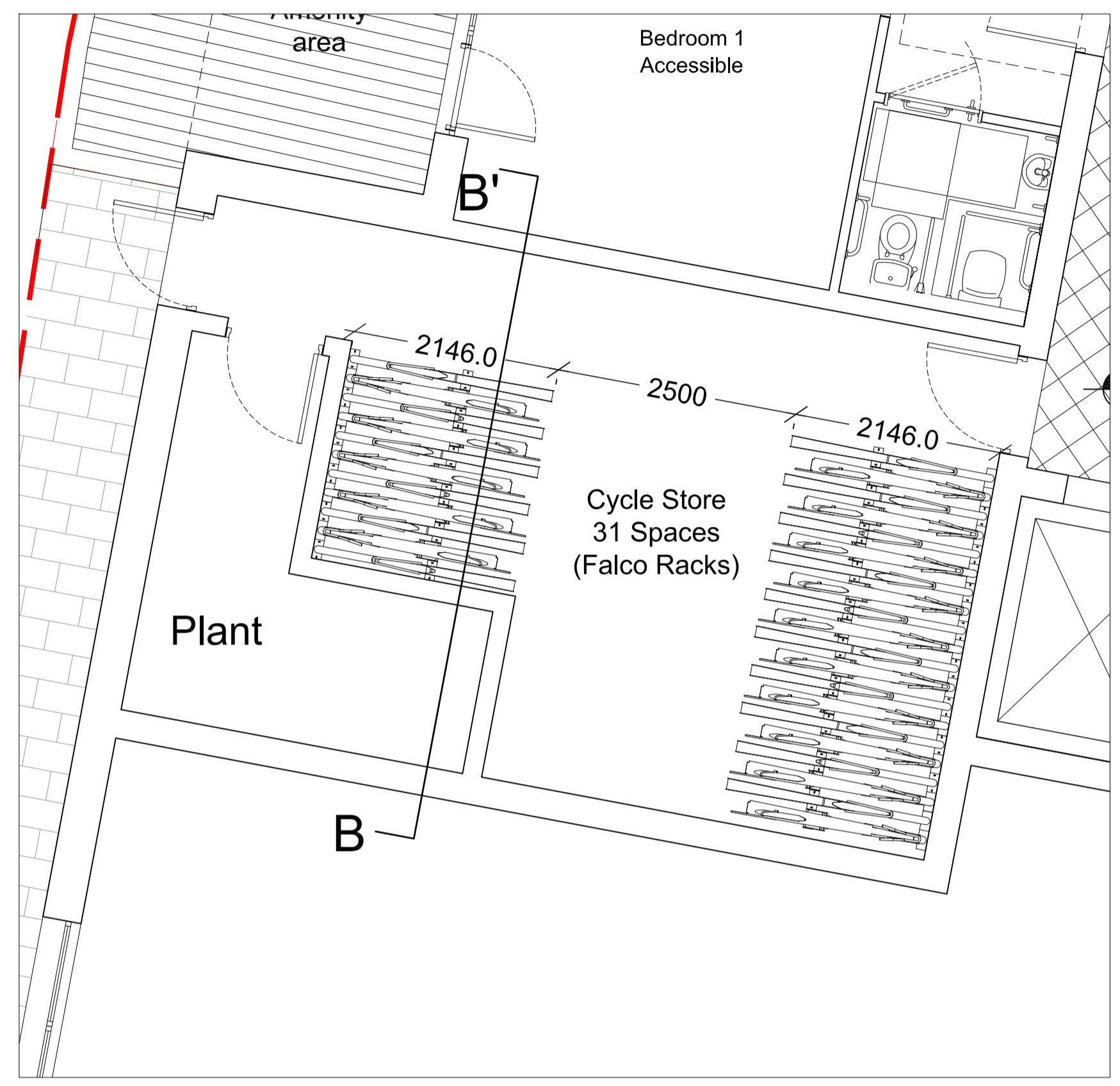
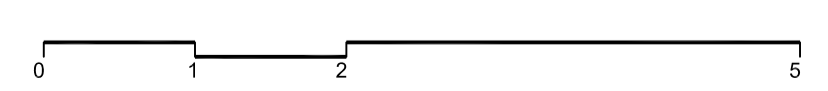


NOTES



Refuse Storage Detail Plan & Access
 Scale 1:50@A3

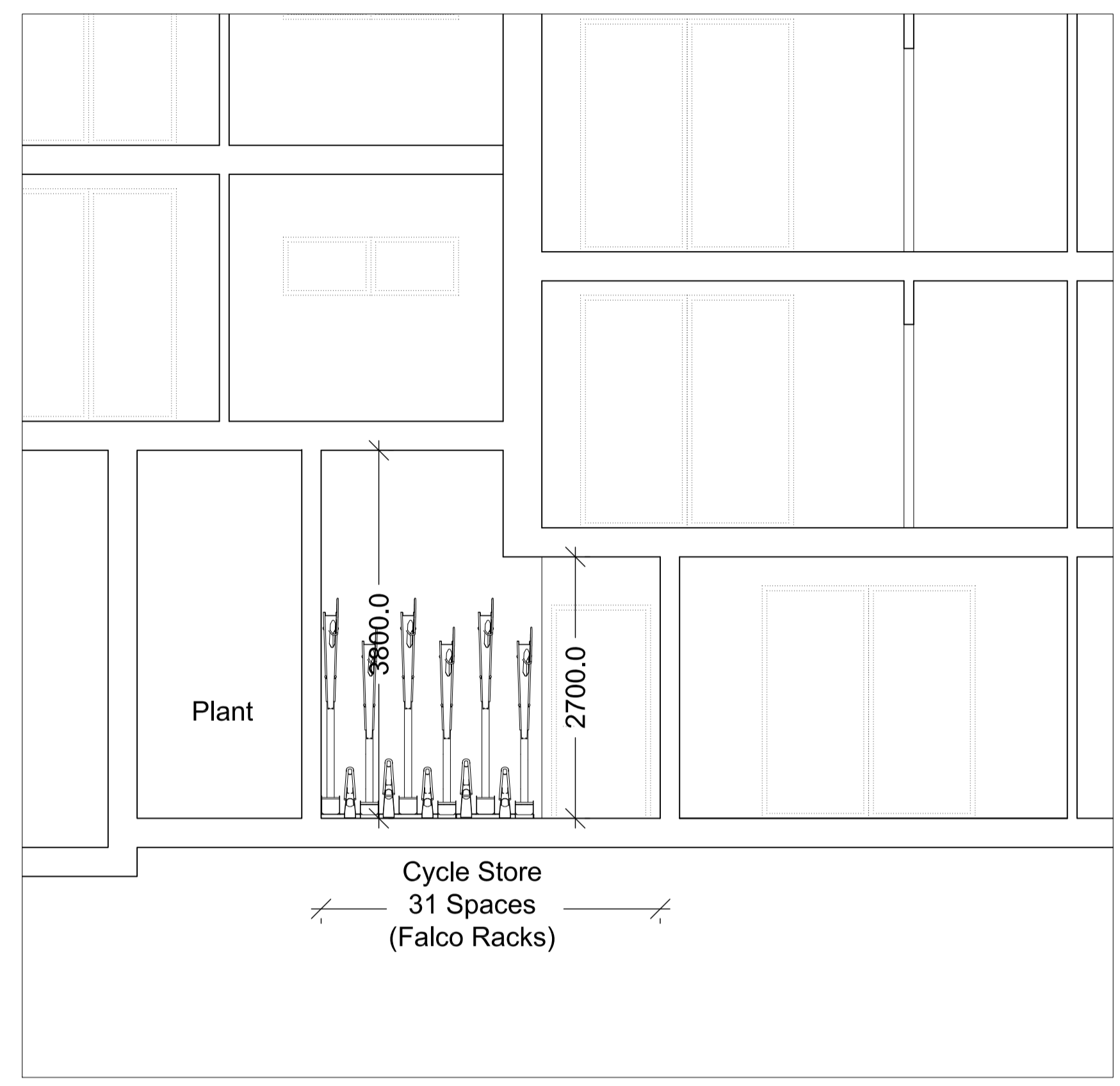
- 3 eurobins 1100 l. for General Waste
- 2 eurobins 1100 l. for Recycle
- Lifetime Homes recommended gradient for 500 mm. rise 1:20 (10 m. long flight to achieve it).
- 2 flights proposed: External of 8.5 m. + Hallway flight of 1.5 m= 10m in total.
- Flush main door to avoid SBD issues and canopy introduced to shelter entrance.



Cycle Storage Detail Plan
 Scale 1:50@A3

-Provision for 31 cycle spaces. Falco Racks 00.304-series.

- Complying with "TFL Cycle Standards":
- 1space per 1 or 2b flat = 17nr.
 - 2 spaces per 3b flat = 12nr.
 - 1visitor space per 10 units = 2nr
 - Total= 31 spaces



Cycle Storage Detail Section BB'
 Scale 1:50@A3 (See A 120 001 P0_Section AA)

-Falco Racks 00.304-series minimum headroom height required 2.7 m.

P7 Planning submission	30.07.14	JB
rev amendments	date	by
dexter moren associates		
57d jamestown road london nw1 7db UK		
architecture		
project 159-161 Iverson Rd.		
client McGregor Homes Ltd.		
drawing title Refuse & Cycle Storage		
drawing status Planning		
scale 1:25 @ A1 1:50@ A3	date 09.07.14	drawn by JB checked by HL
job no. 0974	drawing no. A-130-001	revision P7