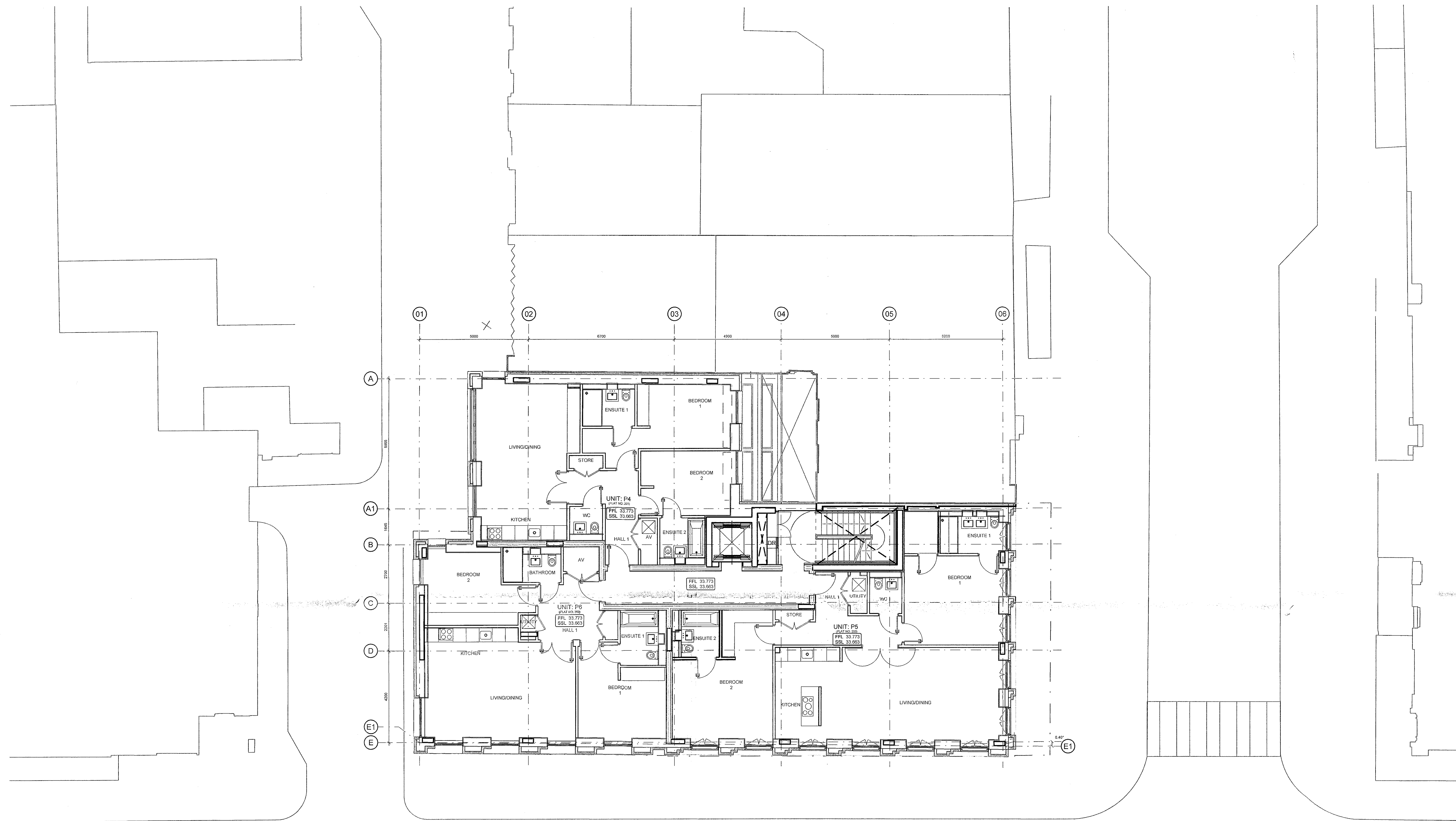


Notes

1. BASED ON DSDHA DRAWING NO: 205_20.103T5_2F



A 18/08/2014 SURROUNDING CONTEXT ADDED SF
Revisions By Authorised

Important note
All dimensions in millimetres. Where dimensions are not given, drawings must not be scaled and the matter referred back to Veretec Limited.

All dimensions and conditions are to be checked on site by the contractor prior to preparing drawings or commencing any work. The contractor is responsible for checking that there is no conflict between site dimensions and drawn dimensions.

In the event of any detail or dimensional conflict between Veretec Limited drawings, the matter must be referred back to Veretec Limited for clarification.

Veretec Limited.
36-40 York Way
London N1 9AB
Tel: +44 (0)20 7843 3199
Fax: +44 (0)20 7843 3001
Email: london@veretec.co.uk
Web: www.veretec.co.uk

Client
KNIGHT HARWOOD

Project
73 CHARLOTTE STREET

Title
PROPOSED SECOND FLOOR

Date
MAY 2014

Drawn
OG

Checked
SF

Authorised
KM

Scale
1:100@A1 1:200 @A3

Issue status

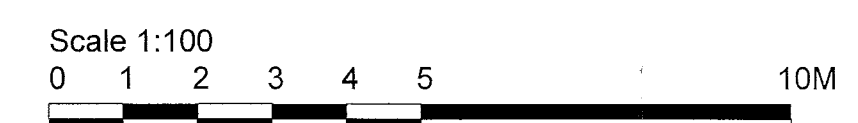
PLANNING

Drawing number
21164-09-AR-07-102

Rev
A

Client Drawing number

01 PROPOSED SECOND FLOOR PLAN
Scale 1:50



VERETEC: P:\21164-09-AR\Rev01.dwg, DWG, 18/08/2014, 14:28:17, 581
P:\21164-09-AR\Rev01.dwg, DWG, 18/08/2014, 14:28:17, 581
P:\21164-09-AR\Rev01.dwg, DWG, 18/08/2014, 14:28:17, 581
P:\21164-09-AR\Rev01.dwg, DWG, 18/08/2014, 14:28:17, 581
P:\21164-09-AR\Rev01.dwg, DWG, 18/08/2014, 14:28:17, 581
P:\21164-09-AR\Rev01.dwg, DWG, 18/08/2014, 14:28:17, 581