

Notes

1. BASED ON DSDHA DRAWING NO: 205\_30.001T5\_Charlotte Street

MATERIAL LEGEND:

- 01 DARK PETERSEN BRICK, D58 HF FORMAT (220X105X65MM) MORTAR TO BE RECESSED BY 6MM, COLOUR REF: WEBER 1093
- 02 LIGHT PETERSEN BRICK, D51 HF FORMAT (220X105X65MM) MORTAR TO BE RECESSED BY 3MM, COLOUR REF: WEBER 1202
- 03 LIGHT PETERSEN BRICK, D51 HF FORMAT (220X105X65MM) MORTAR TO BE FLUSHED, COLOUR REF: WEBER 1202
- 04 DECORATIVE METAL BALUSTRADE PPC, COLOUR REF: INTERPON D2525, RAL NOIR 2100 SABLE, MATT
- 05 JULIET METAL BALUSTRADE PPC, COLOUR REF: INTERPON D2525, RAL NOIR 2100 SABLE, MATT
- 06 TERRACE METAL BALUSTRADE PPC, COLOUR REF: INTERPON D2525, RAL NOIR 2100 SABLE, MATT
- 07 ORNATE METAL BALUSTRADES, COLOUR REF: INTERPON D2525, RAL NOIR 2100 SABLE, MATT
- 08 ORNATE METAL VENTILATION GRILLE, COLOUR REF: INTERPON D2525, RAL NOIR 2100 SABLE, MATT
- 09 DARK METAL SPANDREL PANEL WITH SIGNAGE, COLOUR REF: INTERPON D2525, RAL NOIR 2100 SABLE, MATT
- 10 FRAMELESS GLAZING SYSTEM WITH BUTT JOINTS AND FRAMELESS OPENABLE DOORS / WINDOWS
- 11 GREY HORIZONTAL ZINC RAINSCREEN SYSTEM
- 12 GREY PPC ALUMINUM COPPING

B	18-Aug-14	NOTES ADDED	SF
A	4-Jul-14	PIER UPDATE, DOOR TO BASEMENT CYCLE DOOR MOVED	OG

Revisions By Authorised

**Important note**  
 All dimensions in millimetres. Where dimensions are not given, drawings must not be scaled and the matter referred back to Veretec Limited.  
 All dimensions and conditions are to be checked on site by the contractor prior to preparing drawings or commencing any work. The contractor is responsible for checking that there is no conflict between site dimensions and drawn dimensions.  
 In the event of any detail or dimensional conflict between Veretec Limited drawings, the matter must be referred back to Veretec Limited for clarification.

Veretec Limited,  
 36-40 York Way  
 London N1 9AB  
 Tel: +44 (0)20 7843 3199  
 Fax: +44 (0)20 7843 3001  
 Email: london@veretec.co.uk  
 Web: www.veretec.co.uk

Client  
 KNIGHT HARWOOD

Project  
 73 CHARLOTTE STREET

Title  
 PROPOSED NORTH-EAST ELEVATION  
 CHARLOTTE STREET

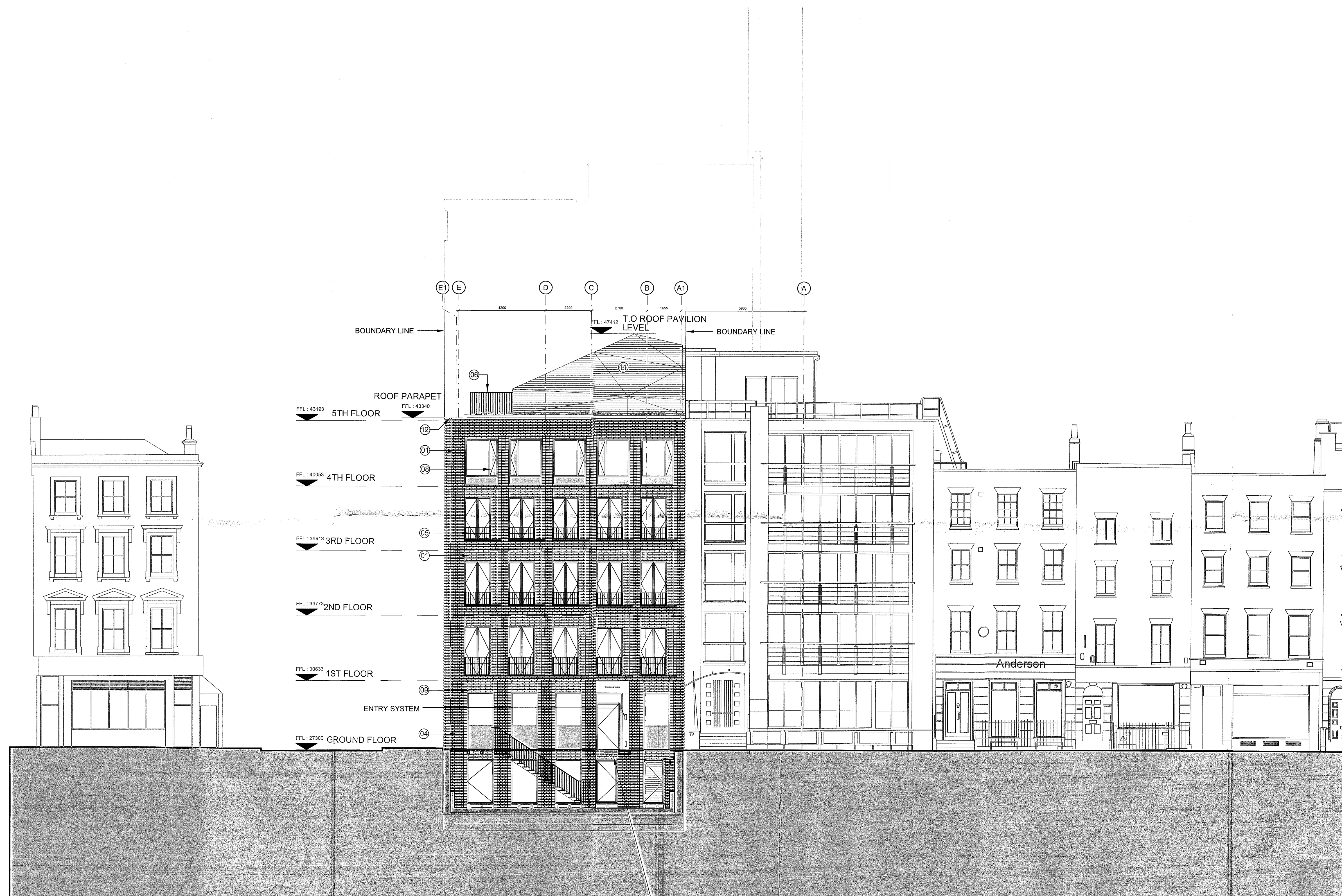
Date	Drawn	Checked	Authorised
MAY 2014	OG	SF	KM

Scale  
 1:100@A1 1:200 @A3

Issue status

PLANNING

Drawing number  
 21164-09-AR-07-108  
 Client Drawing number  
 -



CCTV CAMERA MOUNTED ONTO  
 UNDERSIDE OF FOOT BRIDGE

01 EAST ELEVATION  
 07-108 CHARLOTTE STREET

