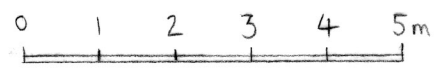
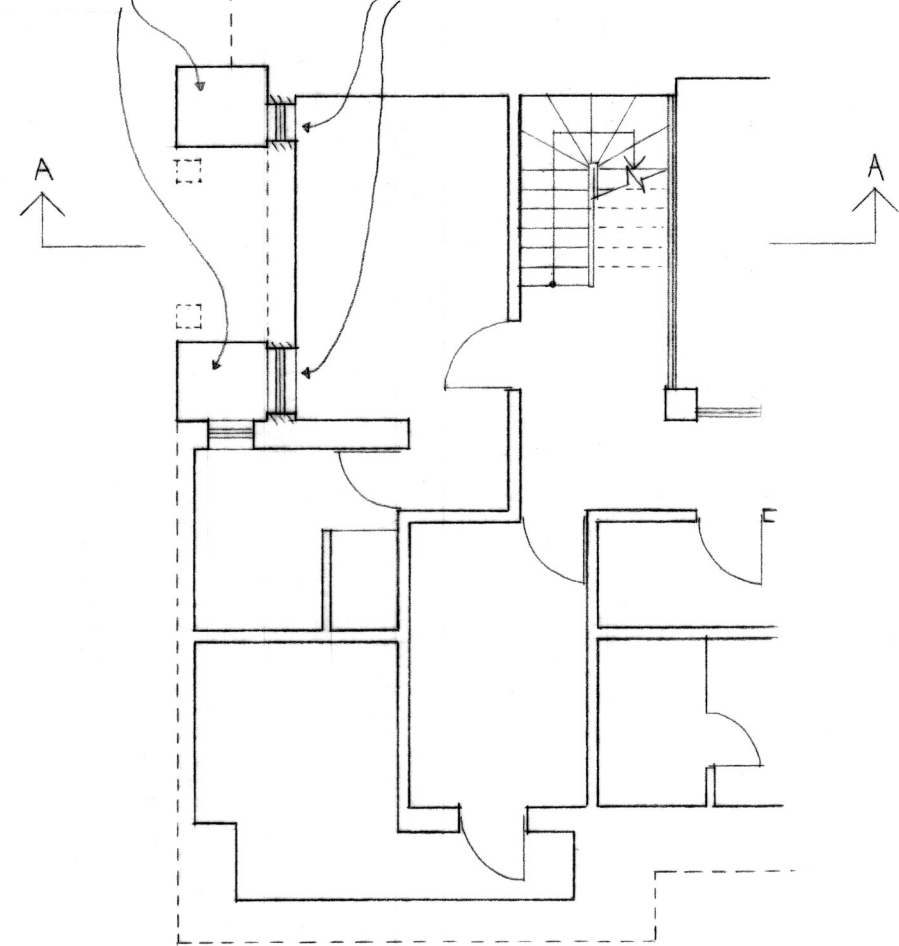


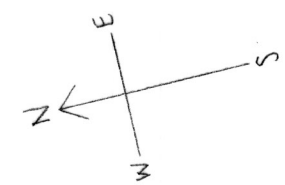
NOTE: PROPOSED PART-PLAN BASED ON APPROVED BASEMENT PLAN BY WEBB ARCHITECTS LTD DRG NO 1124.01.13(B)

LIGHTWELLS TO SUIT PORCH ABOVE

REDUCED WINDOWS TO SUIT LIGHTWELLS AND PROVIDE EMERGENCY EGRESS



PROPOSED SECTION A-A & PROPOSED BASEMENT PART-PLAN
 53A ELSWORTHY ROAD
 JULY 2014
 SCALE 1:100
 ADAM ARCHITECTURE
 5811/PL04A



REV A - 02/09/14 - NOTES ADDED.