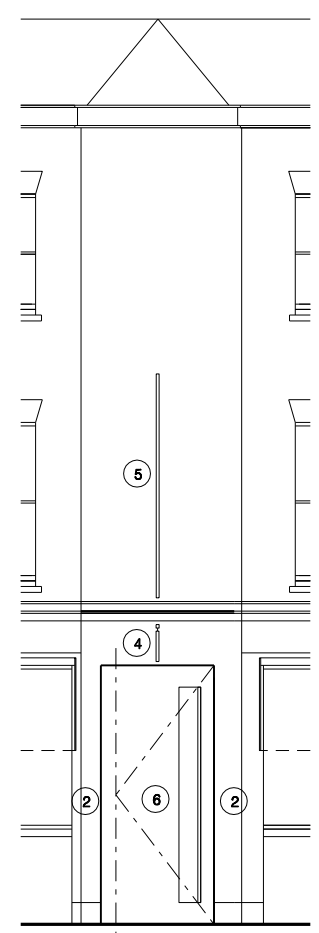


- ① new glazed brick panels to window recesses below existing windows
- ② repaint facade throughout at ground floor
- ③ new pull out awnings above each window with graphics – see e\_002
- ④ new metal hanging sign above door 500mm X 600mm approx – see e\_002
- ⑤ new vertical flagpole above aligned with hanging sign below – 3m x 600mm approx. – see e\_002
- ⑥ new full height metal pivot-hinged door with glazed vision panel, power operated for disabled access
- ⑦ replace existing glazed operable vent with double glazed vent and replace existing double door with metal clad door-and-a-half, per building control request
- ⑧ new graphics to reinstated fascia above windows and new lighting above entablature – see e\_002
- ⑨ replace existing non-original, single glazing with new, frameless, fixed double-glazed panels to match existing – with internal window graphics



proposed elevation



proposed corner elevation



proposed elevation

Rev	Notes	Date
–	issued for planning	08.09.14

- all dimensions are to be checked on site and any discrepancies reported to the architect  
 - architect to be informed of any additional information required  
 - do not scale this drawing  
**PRELIMINARY**



<b>WORKS</b> ARCHITECTURE		16 UPPER MONTAGU STREET LONDON W1H 2AH 020 7224 8750 WWW.WORKSARCHITECTURE.COM		
		Project: goodge place		
Title: proposed elevations				
Date: 08.09.14	Drawn: js	Scale: 1:100@a3 1:50@a1	Drawing Number: e 101	Revision: