

Beiriso, 5 Eagle House, Procter Street, London, WC1V 6NX.

DRAWN BY: C Jackson

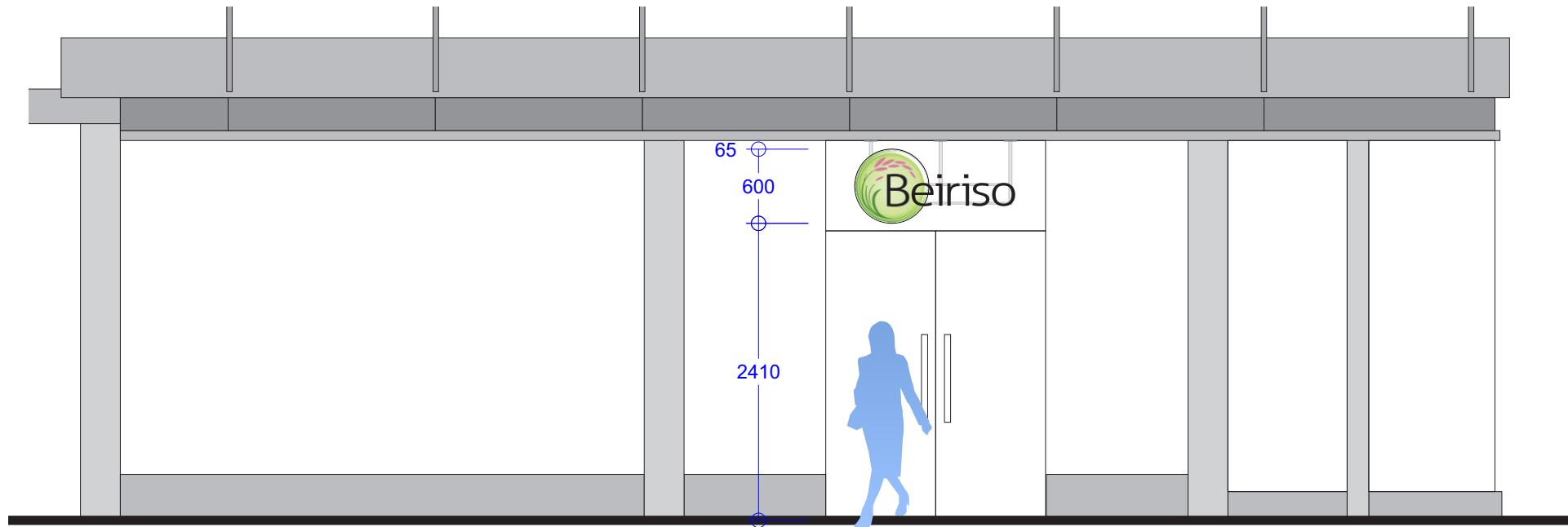
W/O No: 8681 02

DWG No. A3/206337 - 01 Rev 0

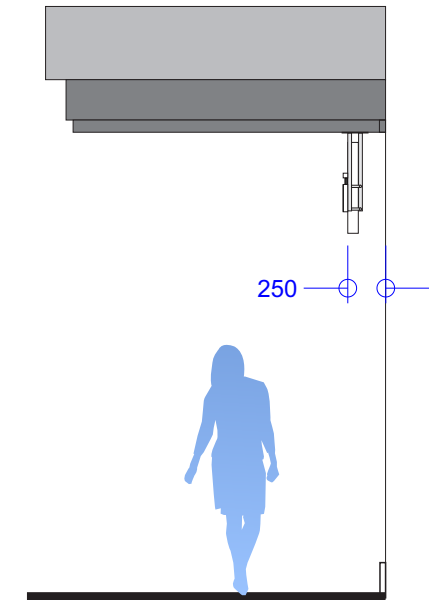
DATE: 20.08.14

SCALE: 1:50

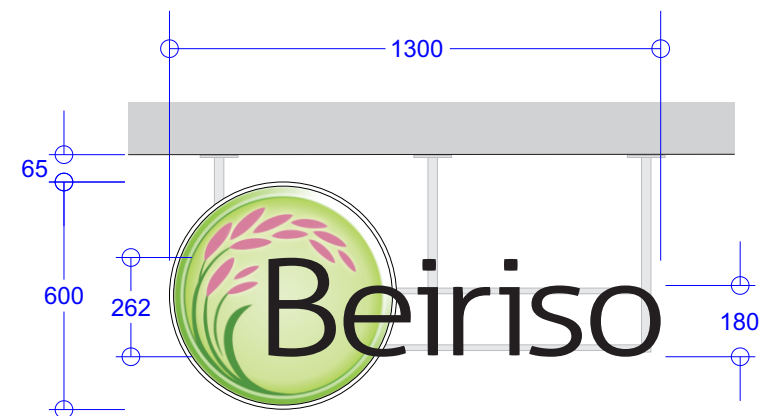
Rev	Description	Date	Revised by



Elevation 1:50



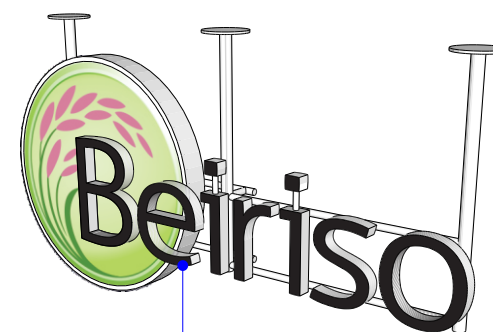
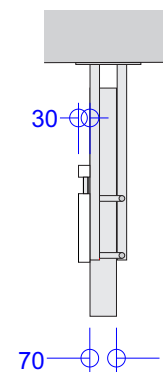
Side 1:50.



1 No Single sided internally illuminated sususpended sign.

Circular logo 70mm deep fabricated from 18swg s/steel finished white & glazed with an opal acrylic face panel.
Face panel applied with a translucent green & pink digitally printed vinyl graphic to fully illuminate.

Approx luminance level - 600cdm2



Letters fabricated from opal acrylic 30mm deep with the letter faces further applied with opaque black vinyl to allow only the opal letter returns to illuminate.

Letters & logo secured to a mirror polished s/steel tubular frame secured to underside of metal soffit over entrance.