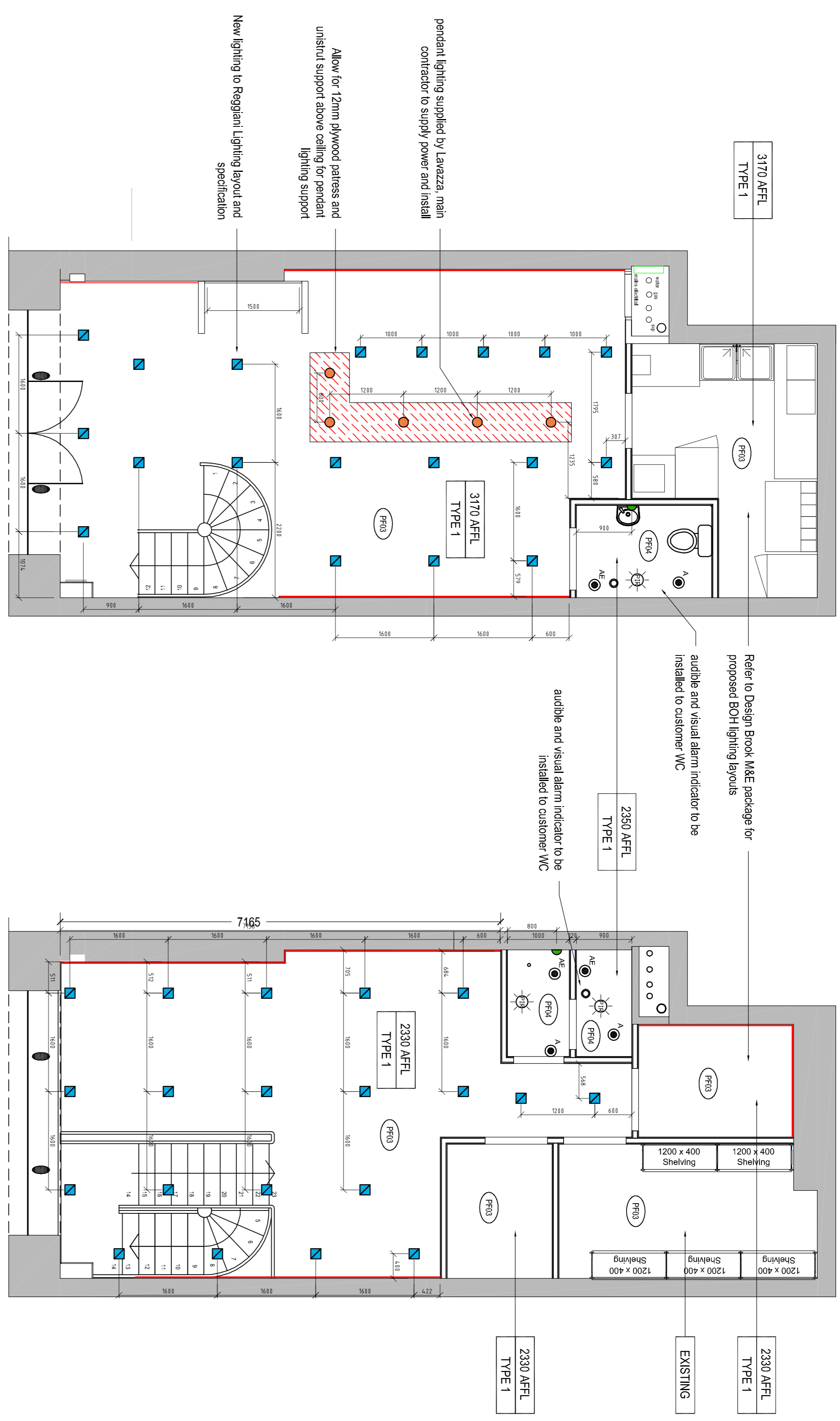


CEILING WORKS
COST OPTION #1
 ALLOW FOR PATCHING A REPAIRING EXISTING PLASTERBOARD CEILING WHERE ANY EXISTING SERVICES AND PARTITIONS ARE REMOVED. ALLOW FOR PROVIDING ADDITIONAL MF CEILING SUPPORTS TO SUIT NEW LIGHTING LAYOUT WHERE CUT IN

CEILING WORKS
COST OPTION #2
 ALLOW FOR STRIPPING BACK EXISTING PLASTERBOARD CEILING AND RE-BOARDING, USING EXISTING METAL FRAME CEILING IN PLACE. ADDITIONAL HANGERS TO BE INSTALLED TO SUIT PROPOSED LIGHTING LAYOUT



PROPOSED GROUND FLOOR REFLECTIVE CEILING PLAN
 SCALE 1:50 @A1

PROPOSED MEZZANINE FLOOR REFLECTIVE CEILING PLAN
 SCALE 1:50 @A1

Drawing Ref	Description	Drawing Ref	Description
A	Surface Mounted 1x38W 2D Fluorescent as Manufactured by Thornlux Lighting Ref: Dd1 Halo 72800U	■	14W LED c/w 1-10V Dimmable Driver & 11 Degree Reflector as Manufactured by Reggiani. Refer to Quote for Reference Details
AE	Surface Mounted 1x38W 2D Fluorescent c/w 3hr Emergency Light as Manufactured by Thornlux Lighting Ref: Dd1 Halo EDT 12800U	●	Suspended Pendant c/w Low Energy E27 Lamp Ref: &T tradition Megabulb SR2
B	Surface Mounted 2x49W T5 Fluorescent as Manufactured by Thorn Lighting Ref: Arrowslim 9621414 c/w Polycarbonate Diffuser Ref: 96278696	●	Suspended Pendant c/w Megaman Lillip 23 W Lamp as Manufactured by Secto Design Ref: Cdo 4240
BE	Surface Mounted 2x35W T5 Fluorescent c/w 3hr Emergency as Manufactured by Thorn Lighting Ref: 96278696		
C	600x600 Recessed Modular LED (35W) as Manufactured by Thorn Lighting Ref: 96241476		
DE	600x600 Recessed Modular LED (35W) c/w 3hr Emergency as Manufactured by Thorn Lighting Ref: 96241477		
D	Surface Mounted Vapour Sealed 2x49W T5 Fluorescent as Manufactured by Thorn Lighting Ref: Aquaforce II 96236929		
DE	Surface Mounted Vapour Sealed 2x49W T5 Fluorescent c/w 3hr Emergency as Manufactured by Thorn Lighting Ref: Aquaforce II 96236935		
E	Surface Mounted Emergency Self-Contained LED Bulhead as Manufactured by Thorn Lighting Ref: Voyager 96241057		
6G	Ceiling Mounted LED Emergency Exit Sign as Manufactured by Thorn Lighting Ref: Voyager 96102976		
6G	One Way One Gang Light Switch		
6G	6 Gang Dimmer Switch for Main Area Reggiani Lighting Scheme as Manufactured by Lutron or Equal and Approved. Final Decision to be Made by Client		
6G	360° PIR Detection (Minimum 8m Detection Radius)		

PROPOSED CEILING FINISHES

TYPE 1 = PLASTERBOARD MF CEILING

TYPE 2 = LAY-IN CEILING GRID AND TILES, SPEC:ARMSSTRONG DUNE SUPREME, 600x600x15mm, COLOUR: WHITE

PF03 = SIKKENS: E7.10.50

PF04 = SIKKENS: F4.07.76

PF05 = DULUX TRADE SPEC: MATT COLOUR: WHITE

SALES FLOOR LIGHTING LEGEND

○ N. 10 - &thodition Suspended lamp Product: Megabulb SR2
● N. 6 - Secto Design Wall lamp Product: Secto 4230
■ N. 37 - 35W CMH MOSACCO MEDIUM BEAM Supplier REGGIANI

NOTE: REFER TO DESIGN BROOK M&E PACKAGE FOR LIGHTING REQUIREMENTS TO BOH AND PREPARATION AREA