



NOTE  
DO NOT SCALE FROM THIS DRAWING. ALL DIMENSIONS RELATING TO SUB-CONTRACTORS OR SUPPLIERS WORK MUST BE CHECKED AND AGREED BETWEEN THE GENERAL CONTRACTOR AND THE SUB-CONTRACTORS AND SUPPLIERS. ALL DIMENSIONS ARE IN MILLIMETRES. IF IN DOUBT ASK. THIS DRAWING MAY BE SCALED FOR PLANNING PURPOSES ONLY. ALL WORKS OR MATERIALS INDICATED ON THIS DRAWING ARE TO BE TO THE LATEST BRITISH STANDARDS AND ARE TO BE CARRIED OUT IN ACCORDANCE WITH THE RELEVANT CODES OF PRACTICE OR RECOGNISED TRADE ASSOCIATION RECOMMENDATIONS AND PUBLICATIONS.  
© THIS DRAWING IS THE COPYRIGHT OF ALPHEGA.

#### MATERIALS SCHEDULE

**Fortress Road elevation**  
Where a temporary hoarding has been installed, the hoarding to be removed.

Shopfront External View - Powder coated aluminium.  
External colour to be "Traffic Grey B", finish Matt RAL7043. Internal Colour of Shopfront (Internal frames/mullions should be colour "Traffic Grey B" finished RAL7043.

Shop entrance - Powder coated aluminium.  
External colour to be "Traffic Grey B" finish Matt RAL7043. Internal Colour of Entrance door to be "Pure White" - RAL 9010 finish 70% gloss level - Satin finish, to provide contrast for visually impaired.

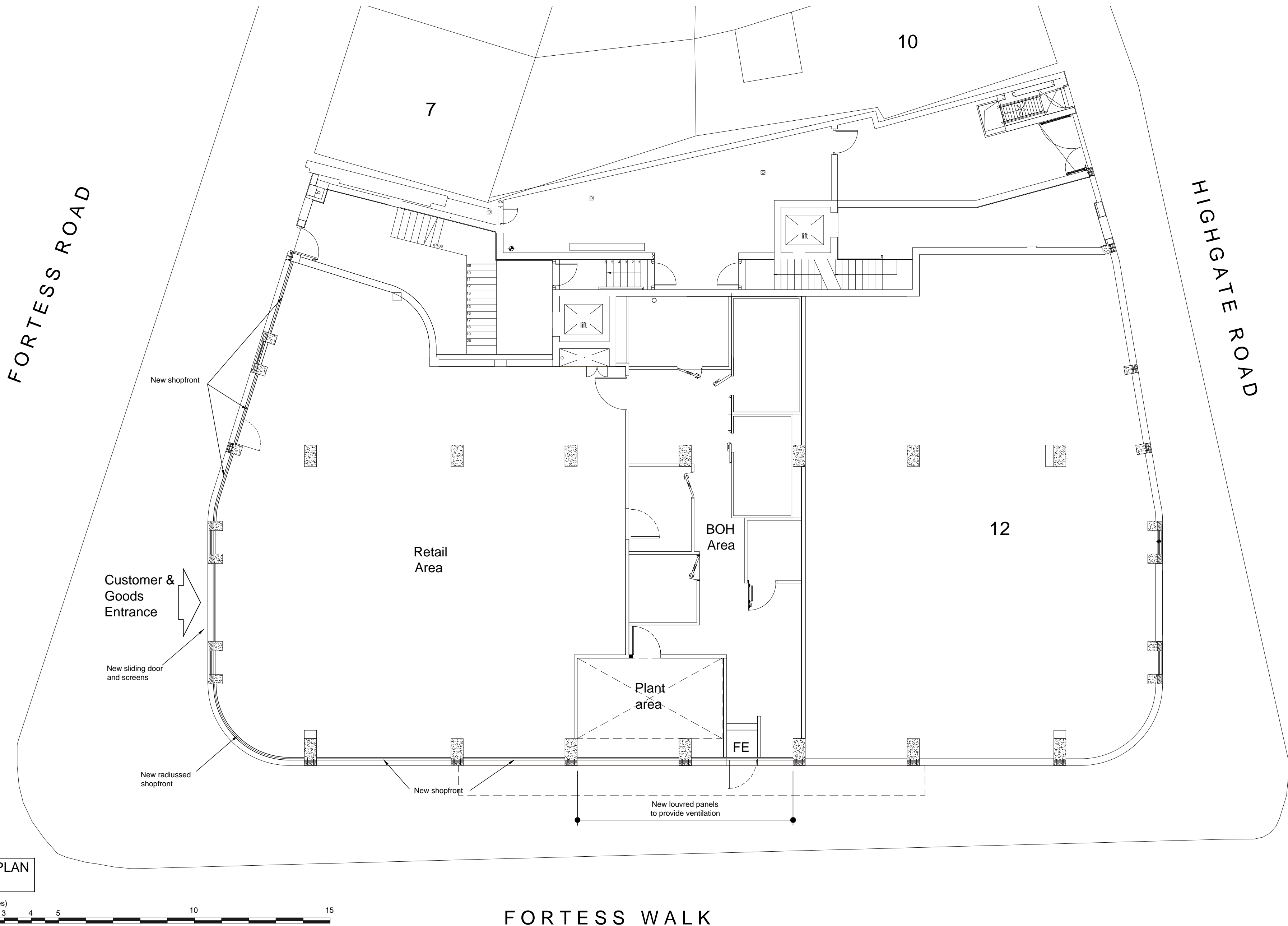
Above the new shopfront an aluminium clad spandrel beam will be installed between the top of the shopfront and the signage zone, as previously approved under approval 2006/3521/P

**Fortress Walk elevation**  
Where a temporary hoarding has been installed, the hoarding to be removed.  
Shopfront External View - Powder coated aluminium.

External colour to be "Traffic Grey B", finish Matt RAL7043. Internal Colour of Shopfront (Internal frames/mullions should be colour "Traffic Grey B" finished RAL7043.

Where indicated two sections of powder coated aluminium ventilation louvres are to be installed. One section will incorporate a fire escape door. External colour to be "Traffic Grey B", finish Matt RAL7043

Above the new shopfront and louvre panels an aluminium clad spandrel beam will be installed between the top of the shopfront and the signage zone, as previously approved under approval 2006/3521/P



#	03/09/14	LQ	Drawing created.
REV	DATE	DRN	DESCRIPTION
<b>ALPHEGA</b> from inception to completion			
5 dukes court, bognor road, chichester, west sussex, po19 8fx tel 08708 712270 email: office@alphega.org			
Client TCG			
Location 9 Fortress Road Kentish Town London NW5 1AS			
Drawing Title Proposed Plan & Elevations			
Date Sept 2014	Drawn By L.O.	Scale 1:100 @ A1	
CAD file name 1889 - Fortress Road Planning Rev01.dwg			
Drawing No 1889/SL-32	Revision #		

PLANNING