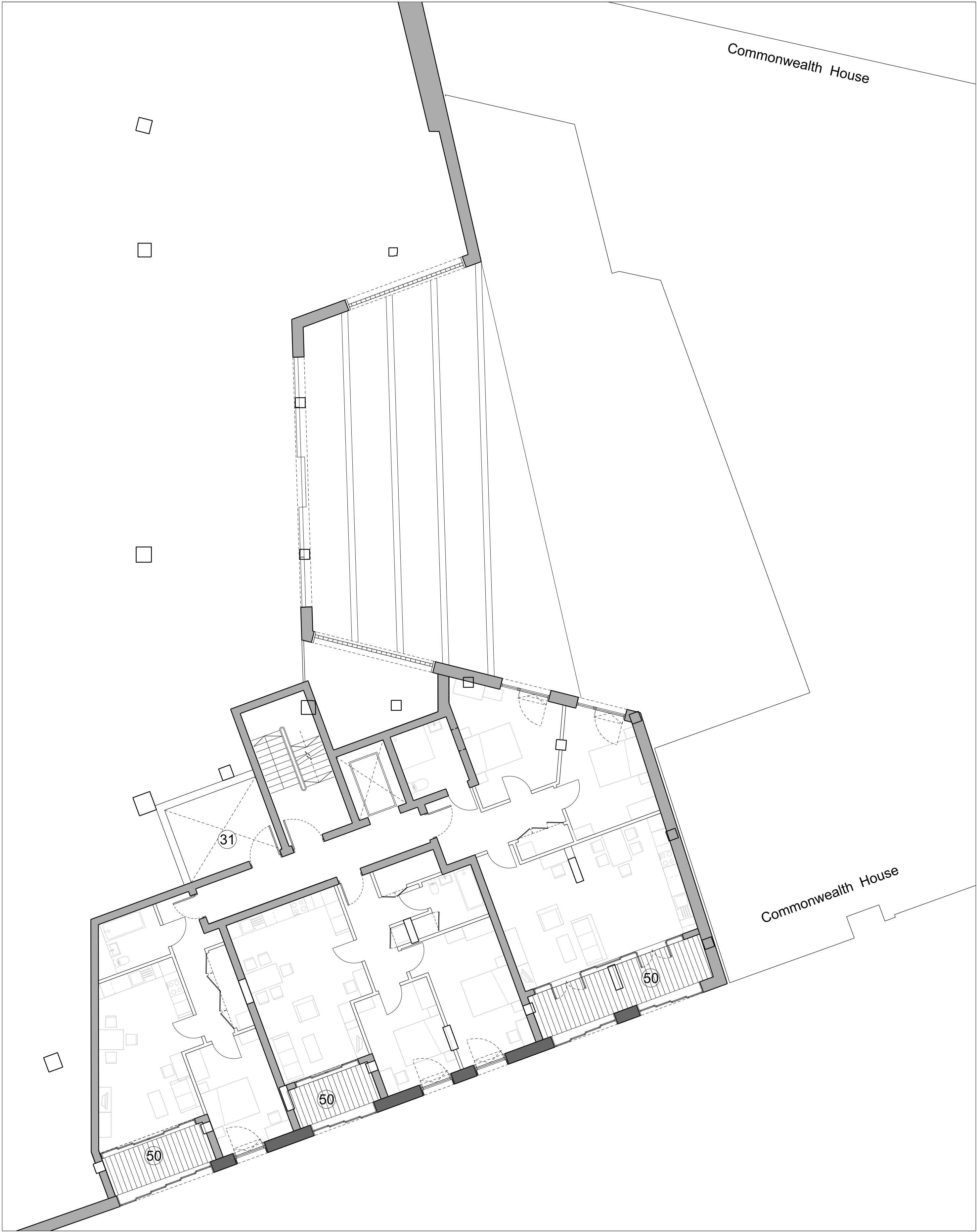


Affordable Housing Section



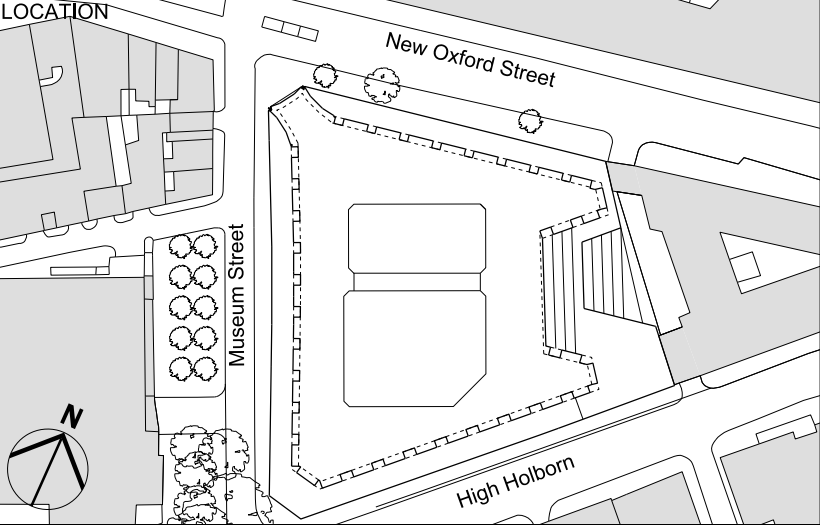
Typical Affordable Housing Layout

- NOTES
- Internal layouts are indicative only.  
Landscape indicative only.  
Plant indicative only.
- GA KEY
- 01 Entrance: Office
  - 02 Entrance: Retail
  - 03 Entrance: Residential
  - 04 Entrance: Cycle-Parking & Facilities (Office and Retail)
  - 05 Entrance: Service Yard
  - 06 Entrance: UKPN
  - 07 Reception/Lobby: Office
  - 08 Reception/Lobby: Residential
  - 09 Reception/Lobby: Cycle-Parking & Facilities (Office and Retail)
  - 10 Retail
  - 11 Office: Office Space
  - 12 Office: Building Management
  - 13 Residential
  - 17 Residential: Storage and other ancillary uses
  - 20 Ancillary: WC / Washroom
  - 21 Ancillary: Building Staff Facilities
  - 22 Ancillary: Plant
  - 23 Ancillary: Lift Lobby
  - 24 Ancillary: Service Bay
  - 25 Ancillary: Goods In
  - 26 Ancillary: Waste Storage - Office
  - 27 Ancillary: Waste Storage - Retail
  - 28 Ancillary: Waste Storage - Residential
  - 29 Ancillary: Changing Facilities/Showers/Lockers
  - 30 Ancillary: Plant (external)
  - 31 Ancillary: Riser
  - 32 Ancillary: Cyclist Lift
  - 40 Cycle Parking: Office
  - 41 Cycle Parking: Retail
  - 42 Cycle Parking: Residential
  - 43 Disabled Car Parking: Office
  - 44 Disabled Car Parking: Residential
  - 45 Loading Bay
  - 46 Dunn's Passage
  - 47 Proposed Vehicle Gates
  - 48 Proposed Pedestrian Gate
  - 49 Wintergarden: Office
  - 50 Wintergarden: Residential
  - 51 Terrace: Office
  - 52 Terrace: Residential
  - 53 Boiler Flues
  - 54 Rooftop Plant
  - 55 BMU Store
  - 56 Photovoltaic Panels
  - 57 Royal Mail Cable Route
  - 58 UKPN Substations
  - 59 Access to Royal Mail tunnels
  - 60 Potential Access to Royal Mail cable route
  - 61 Existing Royal Mail drums
  - 62 Building Maintenance Unit Track
  - 63 Balustrade
  - 64 Existing Hoarding
  - 65 Satellite dishes
  - 66 Extent of opening along party wall is indicative only and will be subject to a party wall agreement with the neighbouring property.

P03	26.08.14	PLANNING SUBMISSION
P02	03.07.14	PLANNING DRAFT
P01	30.05.14	PLANNING DRAFT

REV	DATE
-----	------

- NOTE
1. Do not scale from this drawing, other than for Planning purposes.
  2. All dimensions to be checked on site by the contractor and such dimensions to be his responsibility.
  3. Report all drawing errors, omissions and discrepancies to the architect.
  4. This document may be issued in an uncontrolled CAD format to enable others to use it as background information to make alterations and/or additions. In that instance the file will be accompanied by a PDF version. It is for those making such alterations and additions to ensure that they make use of current background information. AHMM Ltd accepts no liability for any such alterations or additions to the background information or arising out of changes to background information which occur prior to alterations or additions being made.



**ALLFORD HALL MONAGHAN MORRIS**  
ARCHITECTS Ltd  
MORELANDS, 5-23 OLD STREET LONDON EC1V 9HL  
TEL 020 7251 5261 FAX 020 7251 5123 WEB WWW.AHMM.CO.UK

job title  
21-31 New Oxford Street

drawing title / location  
Affordable Housing  
Section & Typical Layout Plan - Proposed

drawn by	checked	scale	status
MP	CK	1:100@A1/1:200@A3	PLANNING

project	zone	source	classification	drawing no.	revision
12141	-	PL	[00]	251	P03