

EXISTING 1No. V/7TEF MULTI-BAND ANTENNA
AND 1No. V/7TEF DUAL-BAND ANTENNA ON
STAND-OFF BRACKETS FIXED TO WALL
MOUNTED CLIMBABLE SUPPORT POLE

EXISTING V/7TEF 2No. WALL
MOUNTED ERICSSON RRUS

EXISTING 1No. V/7TEF MULTI-BAND ANTENNA
AND 1No. V/7TEF DUAL-BAND ANTENNA ON
STAND-OFF BRACKETS FIXED TO WALL
MOUNTED CLIMBABLE SUPPORT POLE

TOP OF EXISTING V/7TEF ANTENNAS
+21.2m AGL

U/S OF EXISTING V/7TEF ANTENNAS
+19.2m AGL

U/S OF EXISTING V/7TEF ANTENNAS
+18.6m AGL

EXISTING PARAPET
+15.7m AGL

EXISTING TEF EQUIPMENT CABIN MOUNTED
ON STEEL SUPPORT GRILLAGE, WITH
OPEN MESH FLOORING, ACCESS LADDER
AND SAFETY HANDRAIL

EXISTING V/7TEF 2No. WALL MOUNTED
ERICSSON RRUS (STACKED)

EXISTING 1No. V/7TEF MULTI-BAND ANTENNA
AND 1No. V/7TEF DUAL-BAND ANTENNA ON
STAND-OFF BRACKETS FIXED TO WALL
MOUNTED CLIMBABLE SUPPORT POLE

TOP OF EXISTING V/7TEF ANTENNAS
+22.4m AGL

U/S OF EXISTING V/7TEF ANTENNAS
+20.4m AGL

U/S OF EXISTING V/7TEF ANTENNAS
+19.8m AGL



EXISTING SOUTH WEST ELEVATION

(1:125)

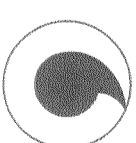
Notes:

1 ALL DIMENSIONS ARE IN MM UNLESS NOTED OTHERWISE

N.G.R. E: 530367 N: 181803

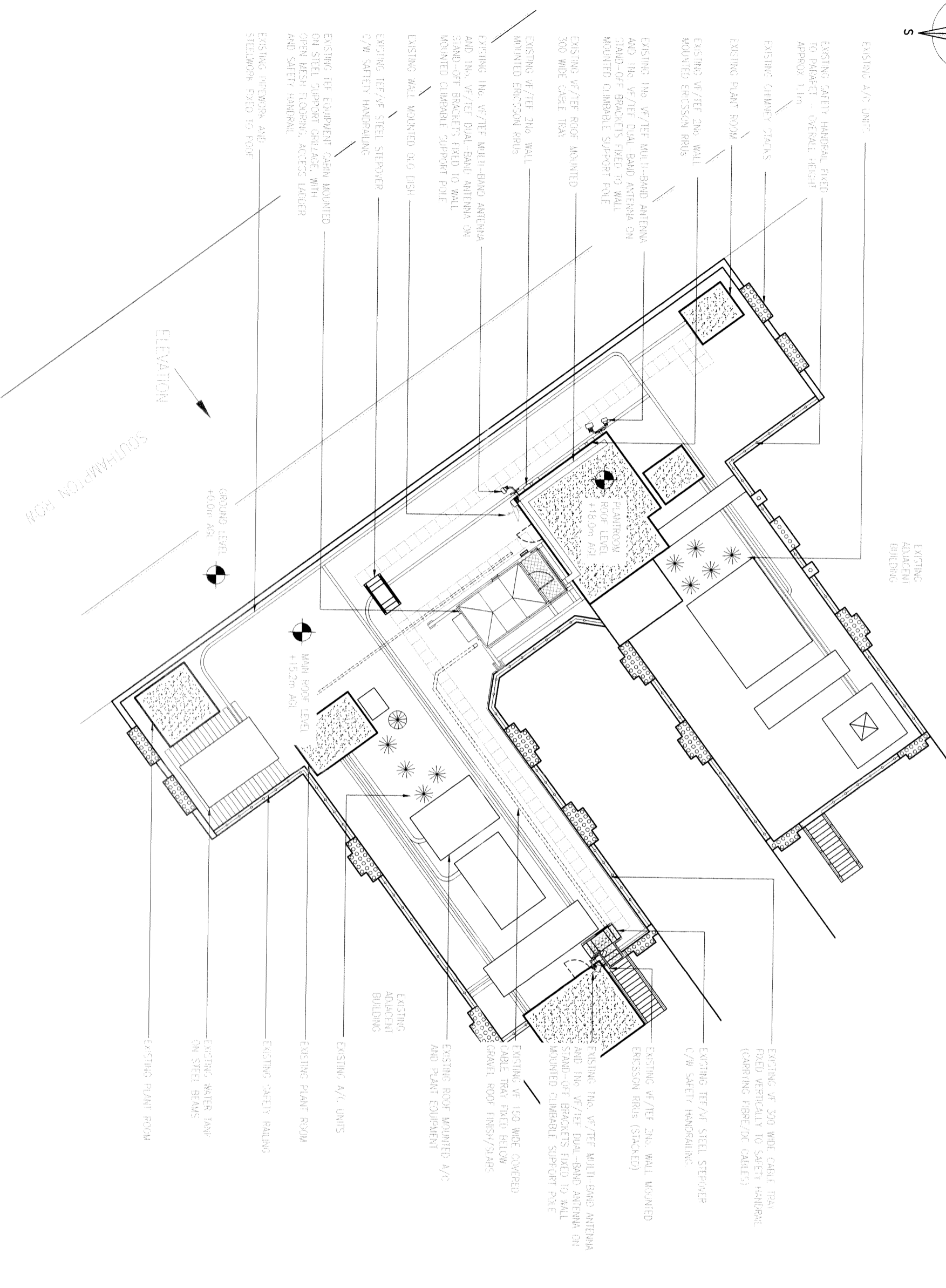
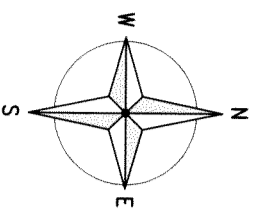
REV	DESCRIPTION	DATE
B	Issued for Construction	29.05.14
A	Issued for Planning	04.12.13
BY	CH	DATE

mono #
MONO CONSULTANTS LIMITED
Packwood House
Guild Street
Stratford-upon-Avon
CV37 6RP
T: 44 (0)1789 290099
F: 44 (0)1789 290088
www.monocconsultants.com



Cell Name	BONNINGTON HOTEL	Opt	A
Cell ID No	CTIL	Host	CTIL
Cell ID No	137295 (VF) 78797	Sharer	(TEF) 9063
Site Address / Contact Details			
BONNINGTON HOTEL (NOW CALLED DOUBLE TREE BY HILTON) 98 SOUTHAMPTON ROW LONDON WC1B 4BH			

Drawing Title:	EXISTING SITE ELEVATION		
Purpose of Issue:	PLANNING		
Drawing Number:	301		
Scale:	As Shown	Drawn:	WH
Checked:	CM	Date:	04.12.13
Approved:	AB	Date:	04.12.13
Issue:	G		



ELEVATION

SOUTHAMPTON ROW

EXISTING SITE PLAN
(1:200)

Notes:
1 ALL DIMENSIONS ARE IN MM UNLESS NOTED OTHERWISE
N.G.R. E: 530387 N: 181803

REV	MODIFICATION	BY	CH	DATE
B	Issued for Construction	PCH	SR	29.05.14
A	Issued for Planning	WH	CM	04.12.13

mono #
MONO CONSULTANTS LIMITED
Peckwood House
Guild Street
Stratford-upon-Avon
CV37 6RP
t. 44 (0)1789 290099
f. 44 (0)1789 290088
www.monoconsultants.com

Cell Name	Opt
BONNINGTON HOTEL	A
Cell ID No	Share
CTIL	Host
CTIL) 157295 (VF) 78797	Share
	CTIL) 9063

Site Address / Contact Details
BONNINGTON HOTEL
(NOW CALLED DOUBLE TREE BY HILTON)
98 SOUTHAMPTON ROW
LONDON
WC1B 4BH

Drawing Title:	EXISTING SITE PLAN			
Purpose of issue:	PLANNING			
Drawing Number:	201			
Scale:	As Shown	Drawn:	WH	Date:
Checked:	CM	Date:	04.12.13	Issue:
		Approved:	AB	Date:
				04.12.13
				G