



Plate 3: 1978 The Castle, from Kentish Town Road



Plate 4: 2013 site from Castle Road



Plate 5: 2013 site from Kentish Town Road

Appendix 1

Geotechnical information April 2013



Site Analytical Services Ltd.

REF: 13/20593

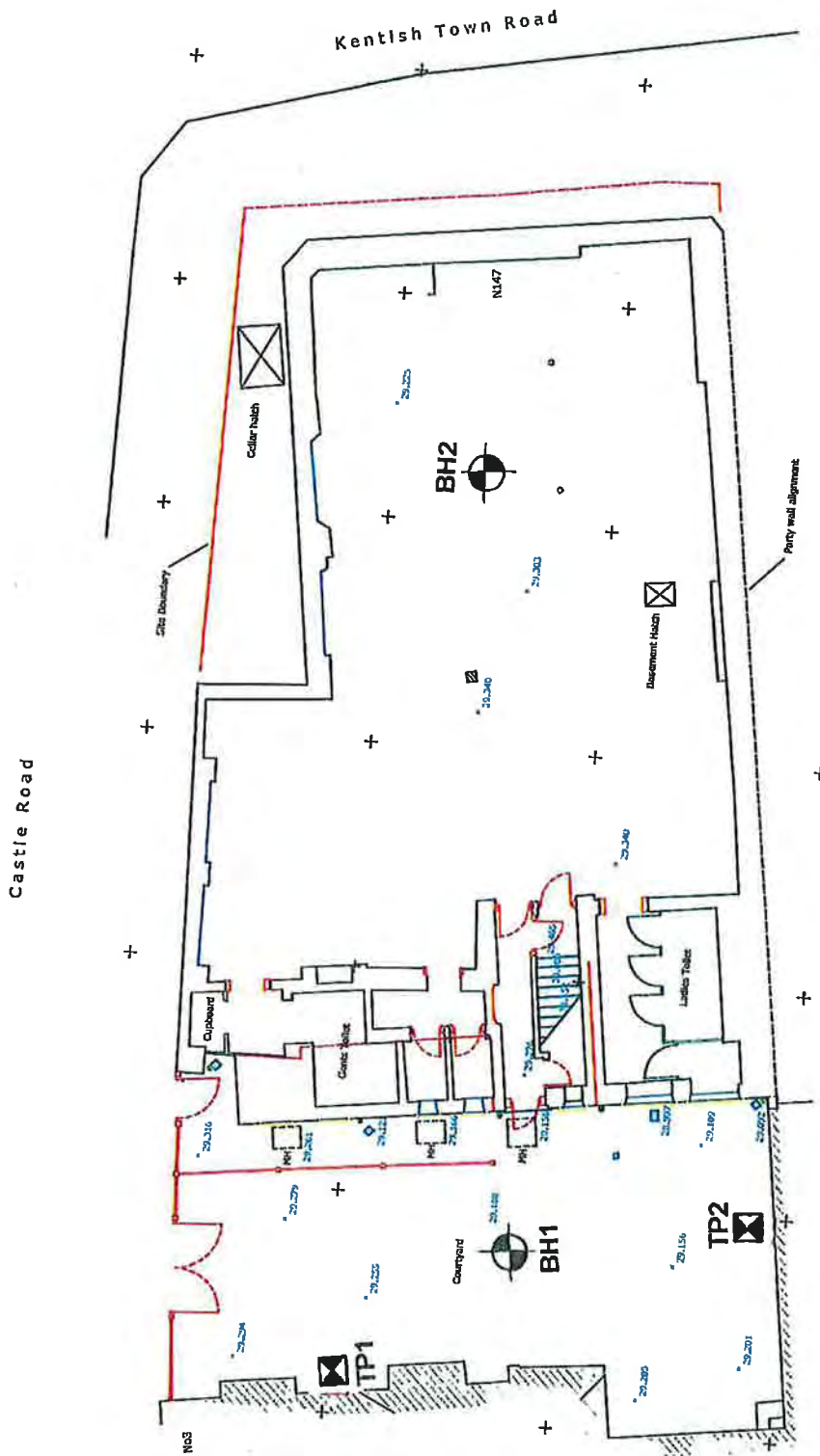
LOCATION: 147 Kentish Town Road, London NW1 8PD

FIG: 1

TITLE: Site Sketch Plan

DATE: April 2013

SCALE: NTS





Site Analytical Services Ltd.

REF: 13/20593

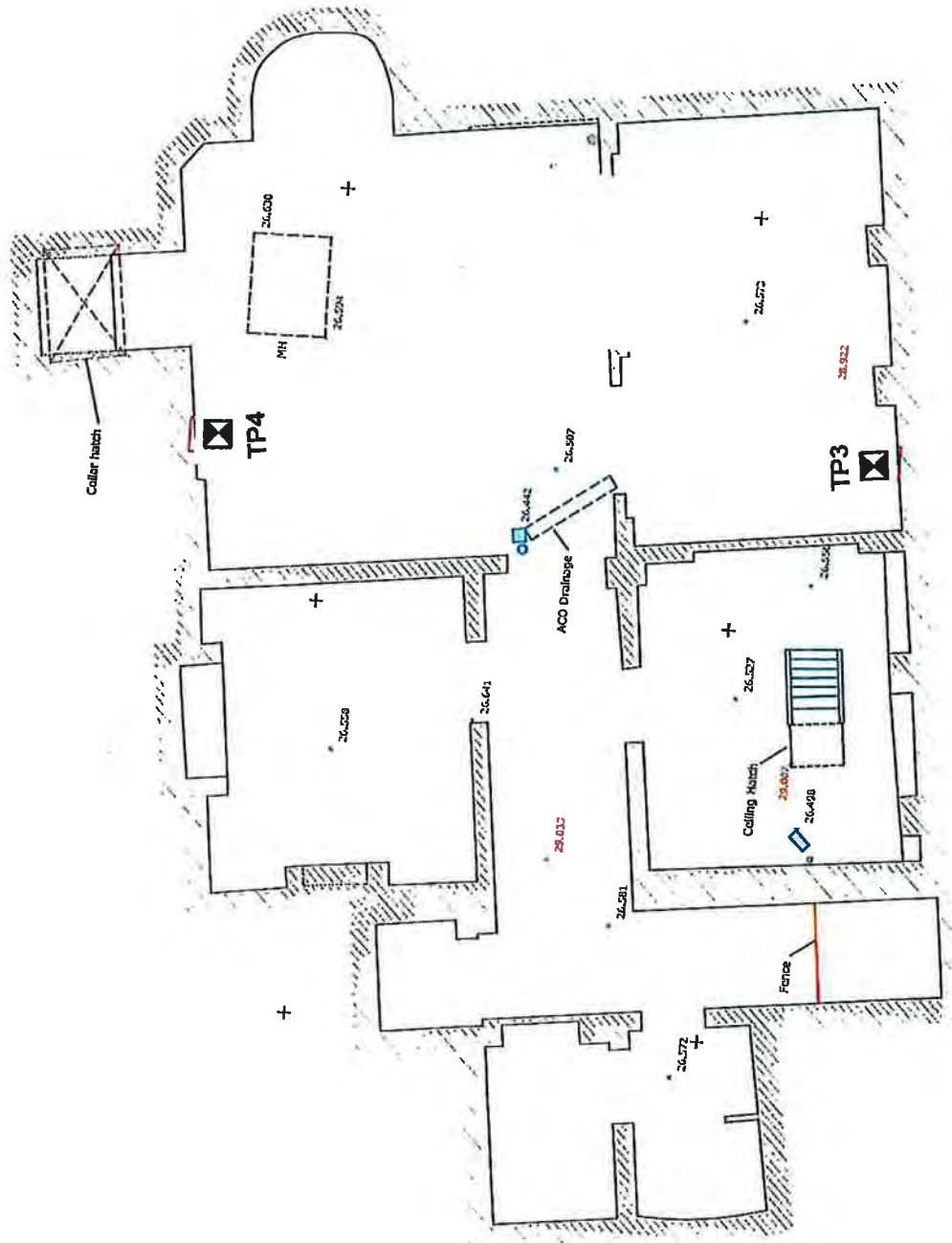
LOCATION: 147 Kentish Town Road, London NW1 8PD

FIG: 1a

TITLE: Site Sketch Plan

DATE: April 2013

SCALE: NTS





Site Analytical Services Ltd.

REF: 13/20593

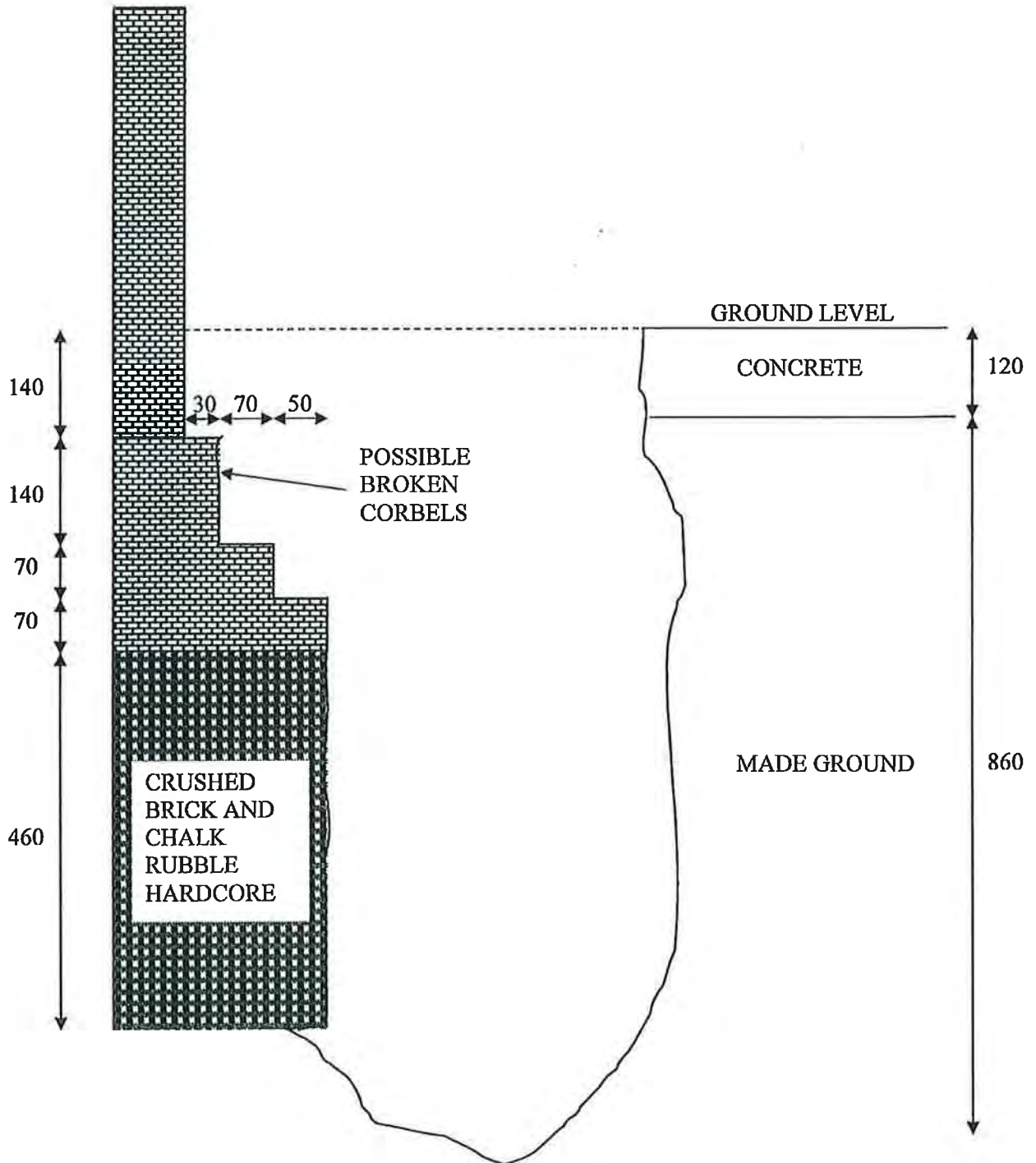
LOCATION: 147 Kentish Town Road, London, NW1 8PD

FIG: 2

TITLE: Trial Pit 1

DATE: April 2013

SCALE: NTS



END OF TRIAL PIT 1 AT 980mm DEPTH

DIMENSIONS IN mm



Site Analytical Services Ltd.

REF: 13/20593

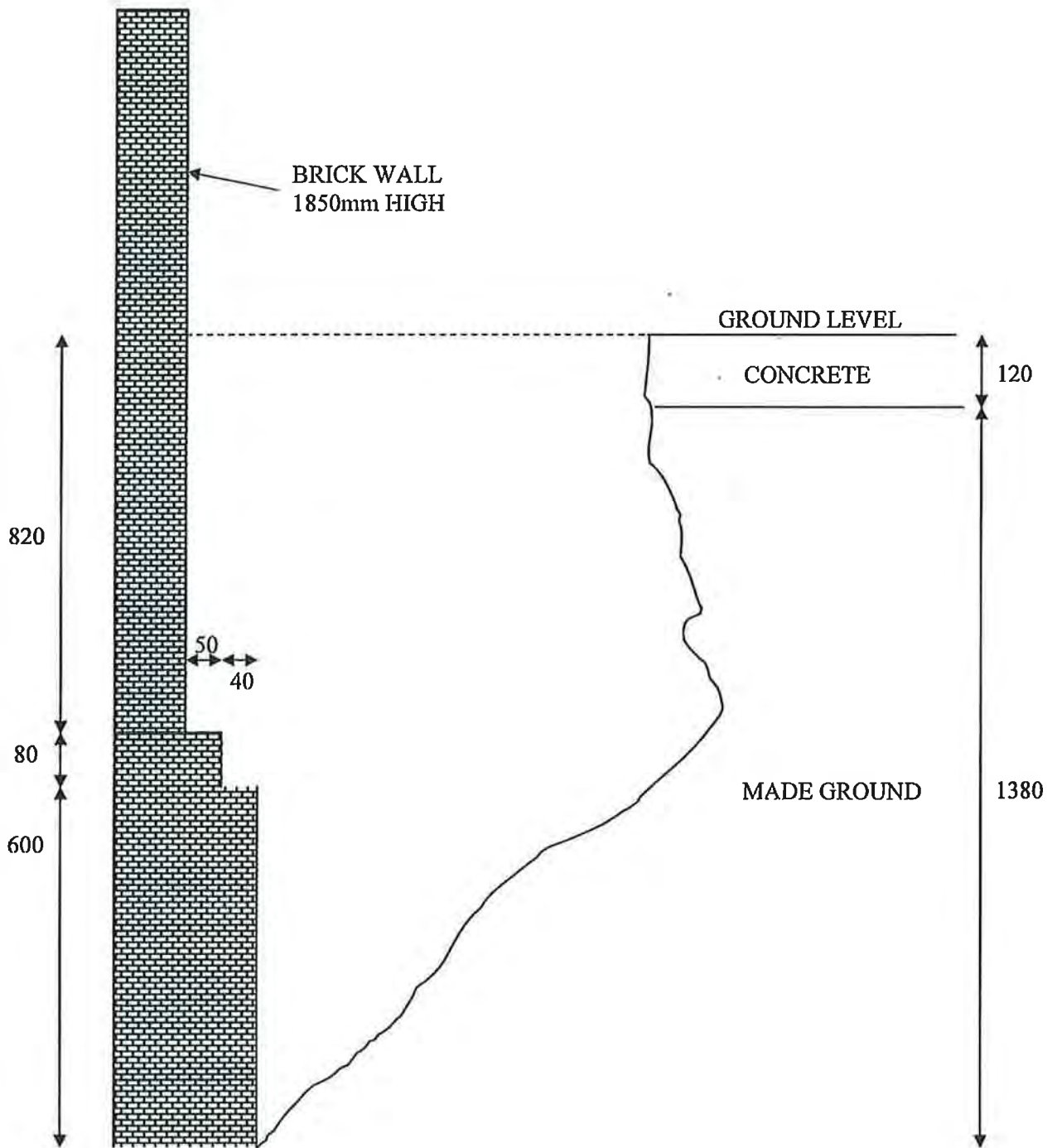
LOCATION: 147 Kentish Town Road, London, NW1 8PD

FIG: 3

TITLE: Trial Pit 2

DATE: April 2013

SCALE: NTS



BASE OF FOUNDATION NOT FOUND

END OF TRIAL PIT 2 AT 1500mm DEPTH

DIMENSIONS IN mm



Site Analytical Services Ltd.

REF: 13/20593

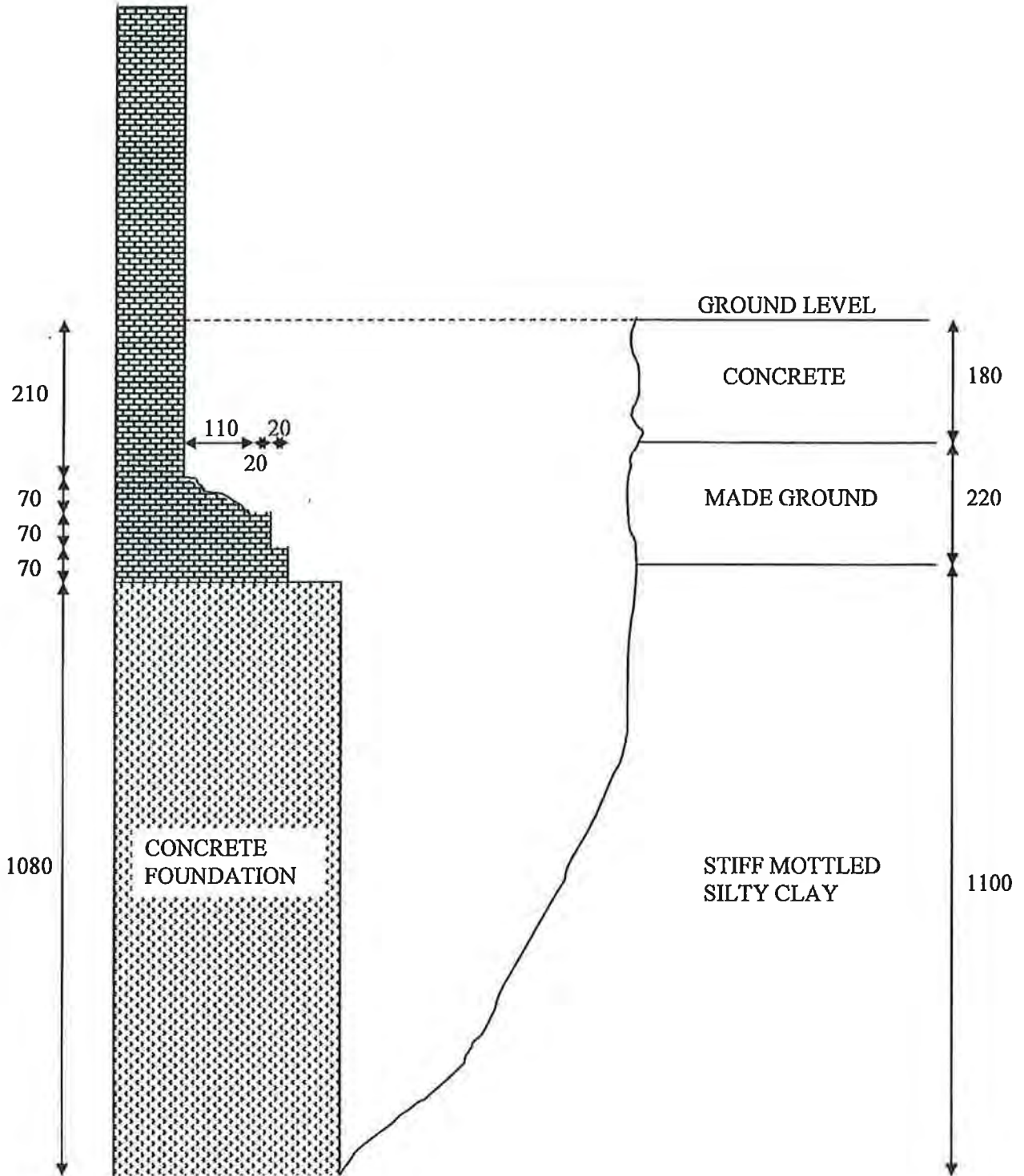
LOCATION: 147 Kentish Town Road, London, NW1 8PD

FIG: 4

TITLE: Trial Pit 3

DATE: April 2013

SCALE: NTS



BASE OF FOUNDATION NOT FOUND

END OF TRIAL PIT 3 AT 1500mm DEPTH

DIMENSIONS IN mm



Site Analytical Services Ltd.

REF: 13/20593

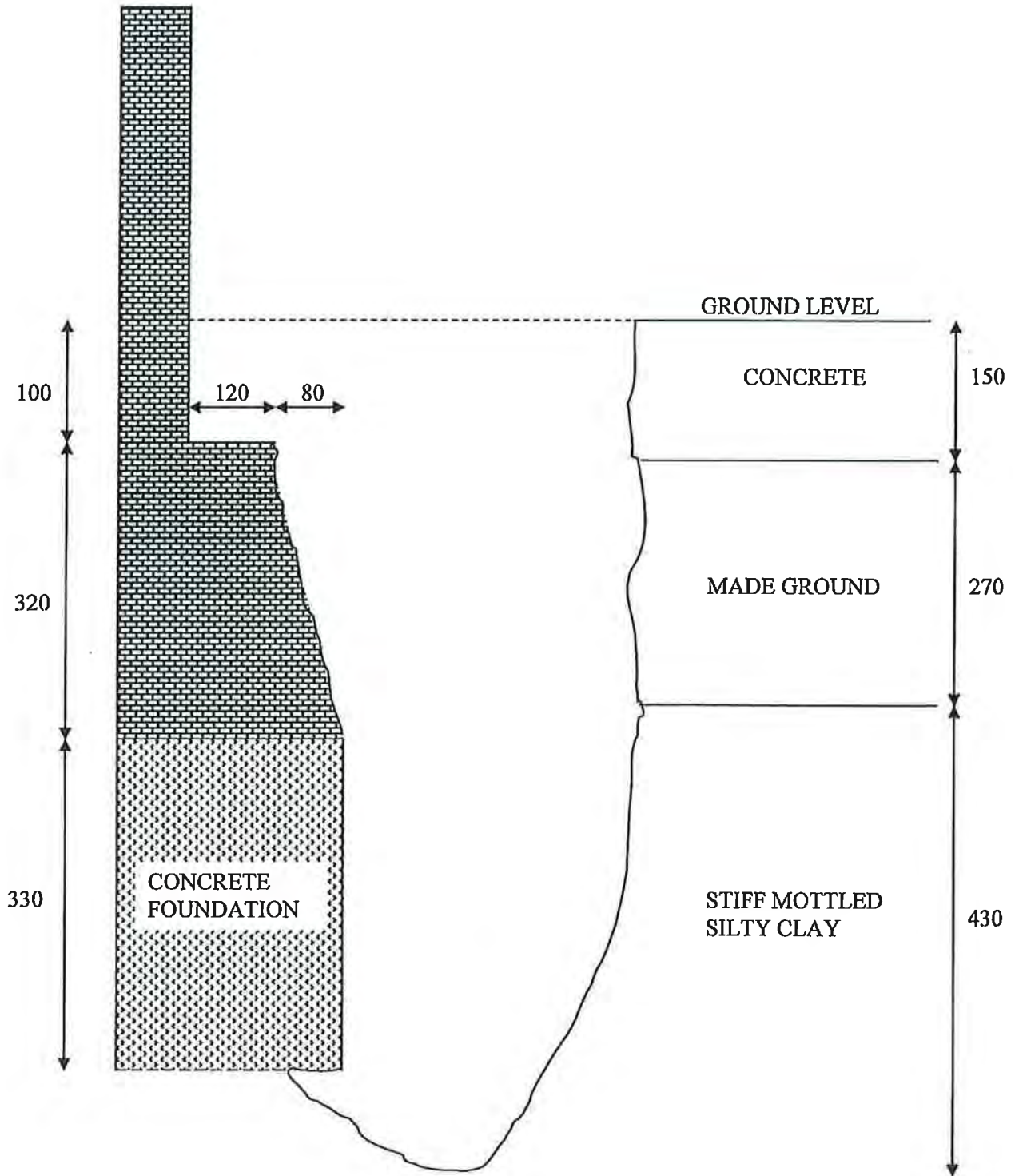
LOCATION: 147 Kentish Town Road, London, NW1 8PD

FIG: 5

TITLE: Trial Pit 4

DATE: April 2013

SCALE: NTS



END OF TRIAL PIT 4 AT 850mm DEPTH

DIMENSIONS IN mm

Site Analytical Services Ltd.

Site
147 KENTISH TOWN ROAD, LONDON, NW1 8PD
Borehole Number
BH1

Boring Method CONTINUOUS FLIGHT AUGER	Casing Diameter 100mm cased to 0.00m	Ground Level (mOD)	Client RINGLEY LIMITED	Job Number 1320593
	Location TQ 299 844	Dates 25/04/2013	Engineer RWA LONDON	Sheet 1/2

Depth (m)	Sample / Tests	Casing Depth (m)	Water Depth (m)	Field Records	Level (mOD)	Depth (m) (Thickness)	Description	Legend	Water
0.25	D1					(0.10)	MADE GROUND : Concrete surface.		
0.50	D2					0.10	MADE GROUND : Black ashes and clinker.		
0.75	D3					(0.30)	MADE GROUND : Very soft black silty clay with ashes and brick fragments.		
1.00	D4					0.40			
1.00-1.30	M1 34/300					(1.50)			
1.60	D5					1.90			
1.60-1.80	M2 38/300					(0.50)	Dense brown very sandy sub angular fine to coarse very clayey flint GRAVEL. Sand is fine to coarse.		
2.00	D6					2.40			
2.00-2.30	M3 100/100						Stiff becoming very stiff brown and mottled orange brown, veined blue grey silty CLAY with occasional partings of light brown silty fine sand and occasional small gypsum crystals		
2.50	D7								
2.50	V1 140+								
3.00	V2 140+								
3.00	D8								
3.50	D9								
3.50	V3 140+								
4.00	D10								
4.00	V4 140+								
4.50	D11					(4.60)			
4.50	V5 140+								
5.00	V6 140+								
5.00	D12								
6.00	D13								
6.00	V7 140+								
7.00	D14					7.00	Very stiff dark grey brown fissured silty clay with occasional partings of light brown silty fine sand and scattered small gypsum crystals		
7.00	V8 140+								
8.00	D15					(8.00)			
8.00	V9 140+								
9.00	D16								
9.00	V10 140+					10.00			

Remarks Groundwater was not encountered during drilling D = Disturbed Sample M = Mackintosh Probe - Blows/Penetration (mm) V = Vane Test - Result in kPa	Scale (approx)	Logged By
	1:50	APS
	Figure No. 1320593.BH1	

Site Analytical Services Ltd.

Site
147 KENTISH TOWN ROAD, LONDON, NW1 8PD

Borehole Number
BH1

Boring Method CONTINUOUS FLIGHT AUGER	Casing Diameter 100mm cased to 0.00m	Ground Level (mOD)	Client RINGLEY LIMITED	Job Number 1320593
	Location TQ 289 844	Dates 25/04/2013	Engineer RWA LONDON	Sheet 2/2

Depth (m)	Sample / Tests	Casing Depth (m)	Water Depth (m)	Field Records	Level (mOD)	Depth (m) (Thickness)	Description	Legend	Water
10.00 10.00	D17 V11 140+						AS PREVIOUS SHEET		
11.00 11.00	V12 140+ D18								
12.00 12.00	D19 V13 140+					(5.00)			
13.00 13.00	D20 V14 140+								
14.00 14.00	D21 V15 140+								
15.00 15.00	D22 V16 140+			25/04/2013: DRY		15.00	Complete at 15.00m		

Remarks	Scale (approx) 1:50	Logged By APS
	Figure No. 1320593.BH1	

Site Analytical Services Ltd.

Site
147 KENTISH TOWN ROAD, LONDON, NW1 8PD

Borehole Number
BH2

Boring Method CONTINUOUS FLIGHT AUGER	Casing Diameter 100mm cased to 0.00m	Ground Level (mOD)	Client RINGLEY LIMITED	Job Number 1320593
	Location TQ 289 844	Dates 26/04/2013	Engineer RWA LONDON	Sheet 1/2

Depth (m)	Sample / Tests	Casing Depth (m)	Water Depth (m)	Field Records	Level (mOD)	Depth (m) (Thickness)	Description	Legend	Water
0.25	D1					(0.10)	MADE GROUND : Concrete surface.		
0.50	D2					0.10	MADE GROUND : Brick and concrete rubble		
0.75	D3					(0.10)	MADE GROUND : Very soft black silty clay with ashes and brick fragments.		
1.00	D4					0.20			
1.00-1.30	M1 42/300					(1.10)			
1.50	D5					1.30	Dense brown very sandy sub angular fine to coarse very clayey flint GRAVEL. Sand is fine to coarse.		
1.50-1.88	M2 138/175					(1.10)			
2.00	D6					2.40	Stiff becoming very stiff brown and mottled orange brown, veined blue grey silty CLAY with occasional partings of light brown silty fine sand and occasional small gypsum crystals		
2.00-2.14	M3 100/140								
2.60	D7								
2.60	V1 140+								
3.00	V2 140+								
3.00	D8								
3.60	D9								
3.60	V3 140+								
4.00	D10								
4.00	V4 140+								
4.50	D11					(4.50)			
4.50	V5 140+								
5.00	V6 140+								
5.00	D12								
6.00	D13								
6.00	V7 140+								
7.00	D14					6.90	Very stiff dark grey brown fissured silty clay with occasional partings of light brown silty fine sand and scattered small gypsum crystals		
7.00	V8 140+								
8.00	D15					(3.10)			
8.00	V9 140+								
9.00	D16								
9.00	V10 140+								
						10.00			

Remarks
Groundwater was not encountered during drilling
D = Disturbed Sample
M = Mackintosh Probe - Blows/Penetration (mm)
V = Vane Test - Result in kPa

Scale (approx)
1:50

Logged By
APS

Figure No.
1320593.BH1

Site Analytical Services Ltd.

Site
147 KENTISH TOWN ROAD, LONDON, NW1 8PD
Borehole Number
BH2

Boring Method CONTINUOUS FLIGHT AUGER	Casing Diameter 100mm cased to 0.00m	Ground Level (mOD)	Client RINGLEY LIMITED	Job Number 1320593
	Location TQ 289 844	Dates 26/04/2013	Engineer RWA LONDON	Sheet 2/2

Depth (m)	Sample / Tests	Casing Depth (m)	Water Depth (m)	Field Records	Level (mOD)	Depth (m) (Thickness)	Description	Legend	Water
10.00 10.00	D17 V11 140+						AS PREVIOUS SHEET		
11.00 11.00	V12 140+ D18								
12.00 12.00	D19 V13 140+					(5.00)			
13.00 13.00	D20 V14 140+								
14.00 14.00	D21 V15 140+								
15.00 15.00	D22 V16 140+			26/04/2013:DRY		15.00	Complete at 15.00m		

Remarks	Scale (approx)	Logged By
	1:50	APS
	Figure No. 1320593.BH1	

Site Analytical Services Ltd.

Site
147 KENTISH TOWN ROAD, LONDON, NW1 8PB
Trial Pit Number
TP1

Excavation Method HAND EXCAVATION	Dimensions 300 x 300	Ground Level (mOD)	Client RINGLEYS LIMITED	Job Number 1320593
	Location TQ 289 844	Dates 25/04/2013	Engineer RWA LONDON	Sheet 1/1

Depth (m)	Sample / Tests	Water Depth (m)	Field Records	Level (mOD)	Depth (m) (Thickness)	Description	Legend	Water
0.25	D1		25/04/2013: DRY		(0.12)	MADE GROUND : Concrete		
0.50	D2				0.12	MADE GROUND : Very soft black silty clay with ashes, brick fragments and clinker		
0.75	D3				(0.76)			
0.88-0.88	M1 100/50				0.88	MADE GROUND : Very dense black silty brick rubble		
					(0.10)			
					0.98	Complete at 0.98m		

Plan

Remarks

For details of foundations exposed - see sketch
Groundwater was not encountered during the excavation
M = Mackintosh Probe - Blows/Penetration (mm)
D = Disturbed Sample

Scale (approx)	Logged By	Figure No.
1:50	APS	1320593.TP1

Site Analytical Services Ltd.

Site
147 KENTISH TOWN ROAD, LONDON, NW1 8PB
Trial Pit Number
TP2

Excavation Method HAND EXCAVATION	Dimensions 300 x 300	Ground Level (mOD)	Client RINGLEYS LIMITED	Job Number 1320593
	Location TQ 289 844	Dates 25/04/2013	Engineer RWA LONDON	Sheet 1/1

Depth (m)	Sample / Tests	Water Depth (m)	Field Records	Level (mOD)	Depth (m) (Thickness)	Description	Legend	Water
0.25	D1				0.12	MADE GROUND : Concrete	[Hatched Pattern]	
0.50	D2				0.12	MADE GROUND : Very soft black silty clay with ashes, brick fragments and clinker		
0.75	D3				(1.38)			
1.00	D4							
1.50	D5		25/04/2013:DRY		1.50	Complete at 1.50m		

Plan

Remarks

For details of foundations exposed - see sketch
Groundwater was not encountered during the excavation
M = Mackintosh Probe - Blows/Penetration (mm)
D = Distrubed Sample

Scale (approx)	Logged By	Figure No.
1:50	APS	1320593.TP2

Site Analytical Services Ltd.

Site
147 KENTISH TOWN ROAD, LONDON, NW1 8PB
Trial Pit Number
TP3

Excavation Method HAND EXCAVATION	Dimensions 300 x 300	Ground Level (mOD)	Client RINGLEYS LIMITED	Job Number 1320593
	Location TQ 289 844	Dates 25/04/2013	Engineer RWA LONDON	Sheet 1/1

Depth (m)	Sample / Tests	Water Depth (m)	Field Records	Level (mOD)	Depth (m) (Thickness)	Description	Legend	Water
0.25	D1				(0.18)	MADE GROUND : Concrete		
0.50	D2				0.18 (0.22) 0.40	MADE GROUND : Very soft black silty clay with ashes, brick fragments and clinker		
0.75	D3					Stiff brown and mottled orange brown, veined blue grey silty CLAY with occasional partings of light brown silty fine sand		
1.00	D4				(1.10)			
1.50	D5		25/04/2013:DRY		1.50	Complete at 1.50m		

Plan

Remarks

D = Distrubed Sample
M = Mackintosh Probe - Blows/Penetration (mm)
Groundwater was not encountered during the excavation
For details of foundations exposed - see sketch

Scale (approx)	Logged By	Figure No.
1:50	APS	1320593.TP2

Site Analytical Services Ltd.

Site
147 KENTISH TOWN ROAD, LONDON, NW1 8PB
Trial Pit Number
TP4

Excavation Method HAND EXCAVATION	Dimensions 300 x 300	Ground Level (mOD)	Client RINGLEYS LIMITED	Job Number 1320593
	Location TQ 289 844	Dates 25/04/2013	Engineer RWA LONDON	Sheet 1/1

Depth (m)	Sample / Tests	Water Depth (m)	Field Records	Level (mOD)	Depth (m) (Thickness)	Description	Legend	Water
0.26	D1				(0.15)	MADE GROUND : Concrete		
0.50	D2				(0.27) 0.42	MADE GROUND : Very soft black silty clay with ashes, brick fragments and clinker		
0.75	D3				(0.43)	Stiff brown and mottled orange brown, veined blue grey silty CLAY with occasional partings of light brown silty fine sand		
0.85	V1 140+		25/04/2013:DRY		0.85	Complete at 0.85m		

Plan

.
.
.
.
.

Remarks

For details of foundations exposed - see sketch
Groundwater was not encountered during the excavation
M = Mackintosh Probe - Blows/Penetration (mm)
D = Disturbed Sample

Scale (approx)	Logged By	Figure No.
1:50	APS	1320593.TP4

Cgms

www.cgms.co.uk

Cgms