

SOURCES CONSULTED

1. **General**

British Library
Camden Local Studies & Archives Centre
Greater London Historic Environment Record

2. **Internet**

<http://www.british-history.ac.uk/>
<http://list.english-heritage.org.uk/>

3. **Bibliographic**

Bridgland Quaternary River terrace deposits as a framework for the Lower Palaeolithic record in Gamble & Lawson (eds.) *The English Palaeolithic Reviewed* 1996

British Geological Survey British Regional Geology *London and the Thames Valley*
Fourth Edition 1996

CgMs *Planning and Policy Statement 147 Kentish Town Road London NW1 8PB* August 2013 unpublished document

Cherry & Pevsner *Buildings of England London 4: North* 1999

Department of Communities and Local Government *National Planning Policy Framework* 2012

Department of Communities and Local Government/Department of Culture Media and Sport/English Heritage *PPS5 Planning for the Historic Environment: Historic Environment Planning Practice Guide* 2010

English Heritage *Comparison of PPS5 Policies with Historic Environment-Related Policies in the NPPF – Part 1* 5 April 2012 unpublished document

English Heritage *Comparison of PPS5 Policies with Historic Environment-Related Policies in the NPPF – Part 2* 5 April 2012 unpublished document

Gibbard *The Pleistocene History of the Lower Thames Valley* 1994

Greater London Archaeological Advisory Service *Standards for Archaeological Work* June 2009 consultation draft (unpublished document)

Institute for Archaeologists *Standard & Guidance for archaeological desk based assessment* November 2012 unpublished document

London County Council *Names and Streets and Places in the Administrative County of London* 1955

London Topographical Society/London & Metropolitan Archives *The London County Council Bomb Damage Maps 1939-1945*, 2005

MoLAS/English Heritage *The Archaeology of Greater London: An Assessment of archaeological evidence for human presence in the area now covered by Greater London* 2000

Site Analytical Services Ltd *147 Kentish Town Road London NW1 8PD Report on a Ground Investigation* May 2013 unpublished document

Walford *Old and New London* Volume 5 1878

Weinreb, Hibbert & Keay (eds.) *The London Encyclopaedia* 2008

Wymer *The Lower Palaeolithic Occupation of Britain* 2 volumes 1999

3. **Cartographic**

1745 John Rocque

1801 Tompson Map of St Pancras

1807 Ordnance Survey Drawing

1842 Plan of the Hamlet of Kentish Town

1849 St Pancras Parish Map

1868 St Pancras Parish Map

1870 Ordnance Survey

1894 Ordnance Survey

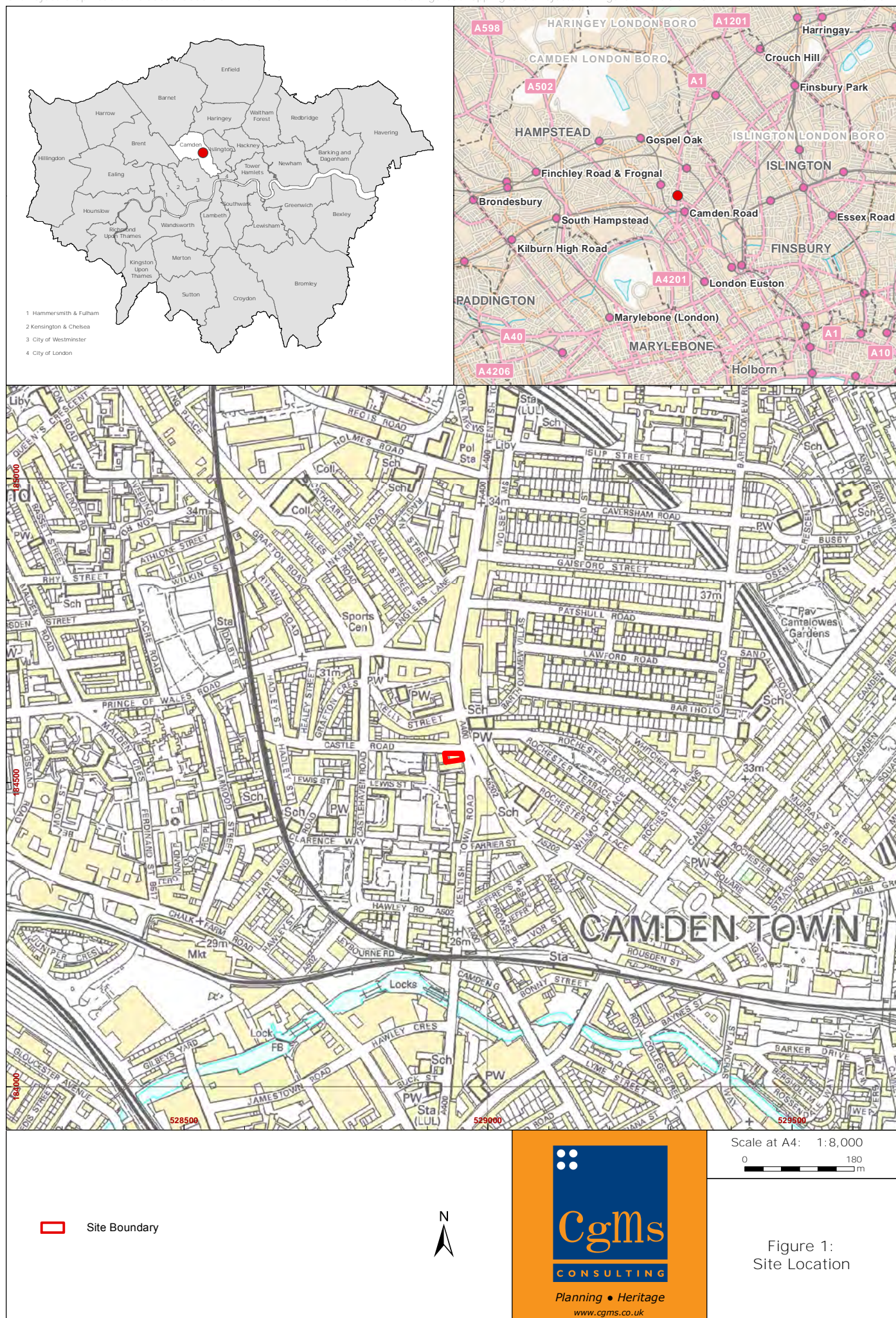
1913 Ordnance Survey

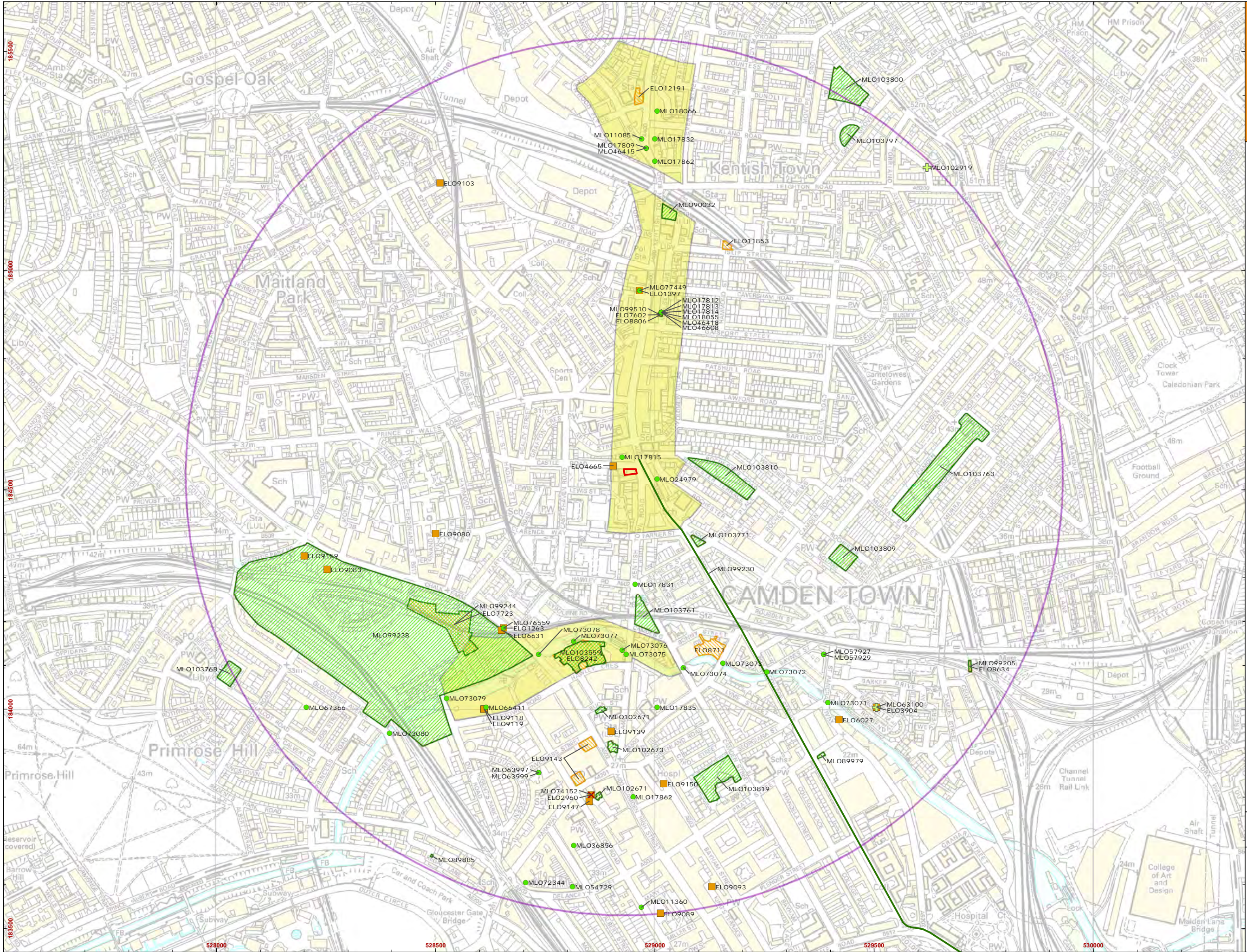
1936-9 Ordnance Survey

1963-1969 Ordnance Survey

1994 British Geological Survey Sheet 256 (North London)

2012 Ordnance Survey





- Site Boundary
- Search Area (1km radius)
- Non-Designated Heritage Assets:**
 - Monument Point
 - Findspot
 - Negative Evidence
 - Monument Line
 - Monument Area
 - Archaeological Priority Area
- Previous Archaeological Work:**
 - Event Point
 - Event Area

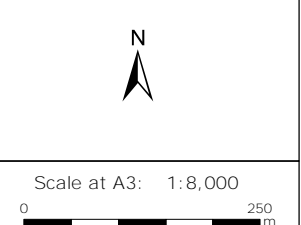
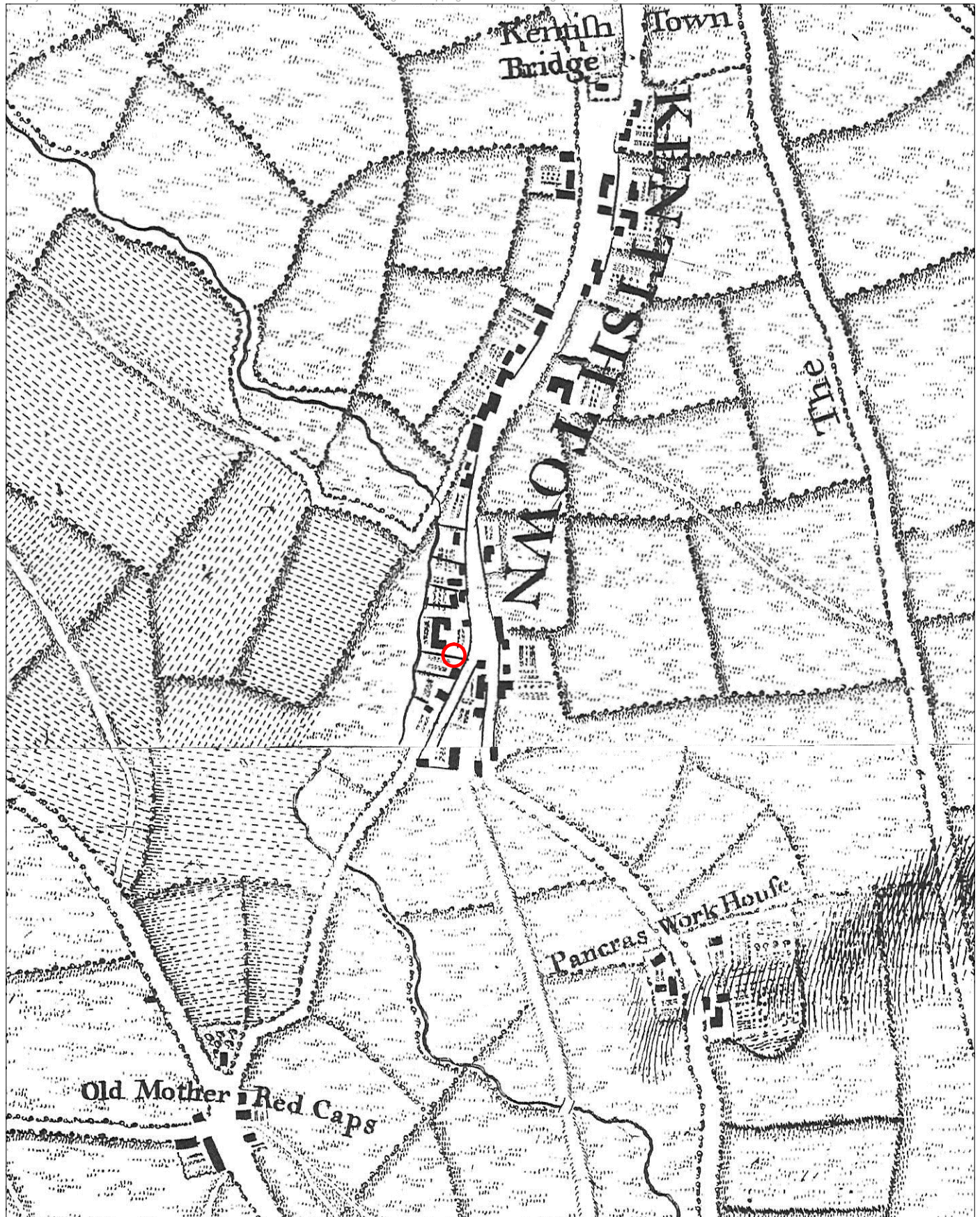


Figure 2:
Summary of
cultural heritage
designations
(data from GLHER)



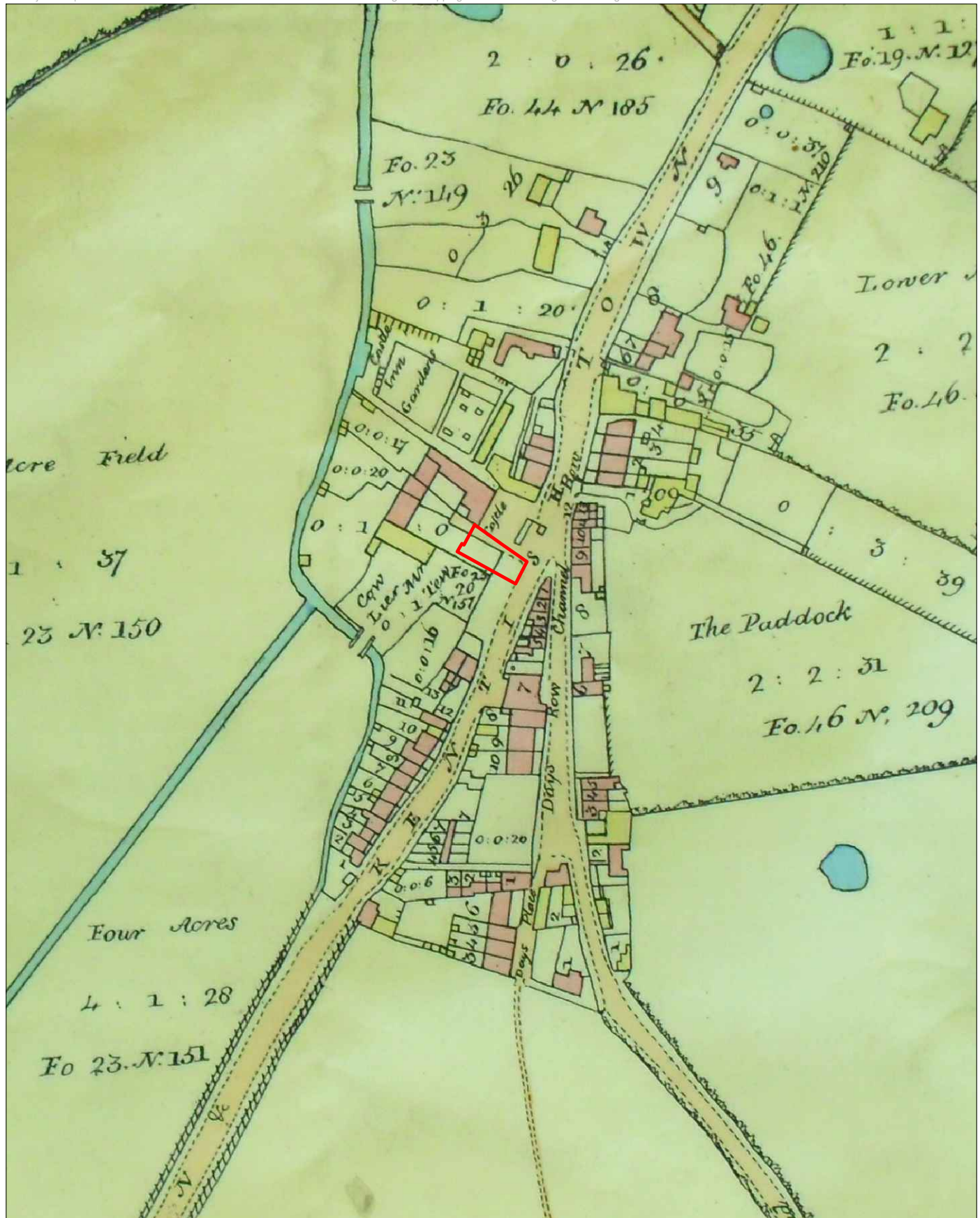
○ Site Location



Planning • Heritage
www.cgms.co.uk

Not to Scale:
Illustrative Only

Figure 3:
1745 John Rocque
Map of London



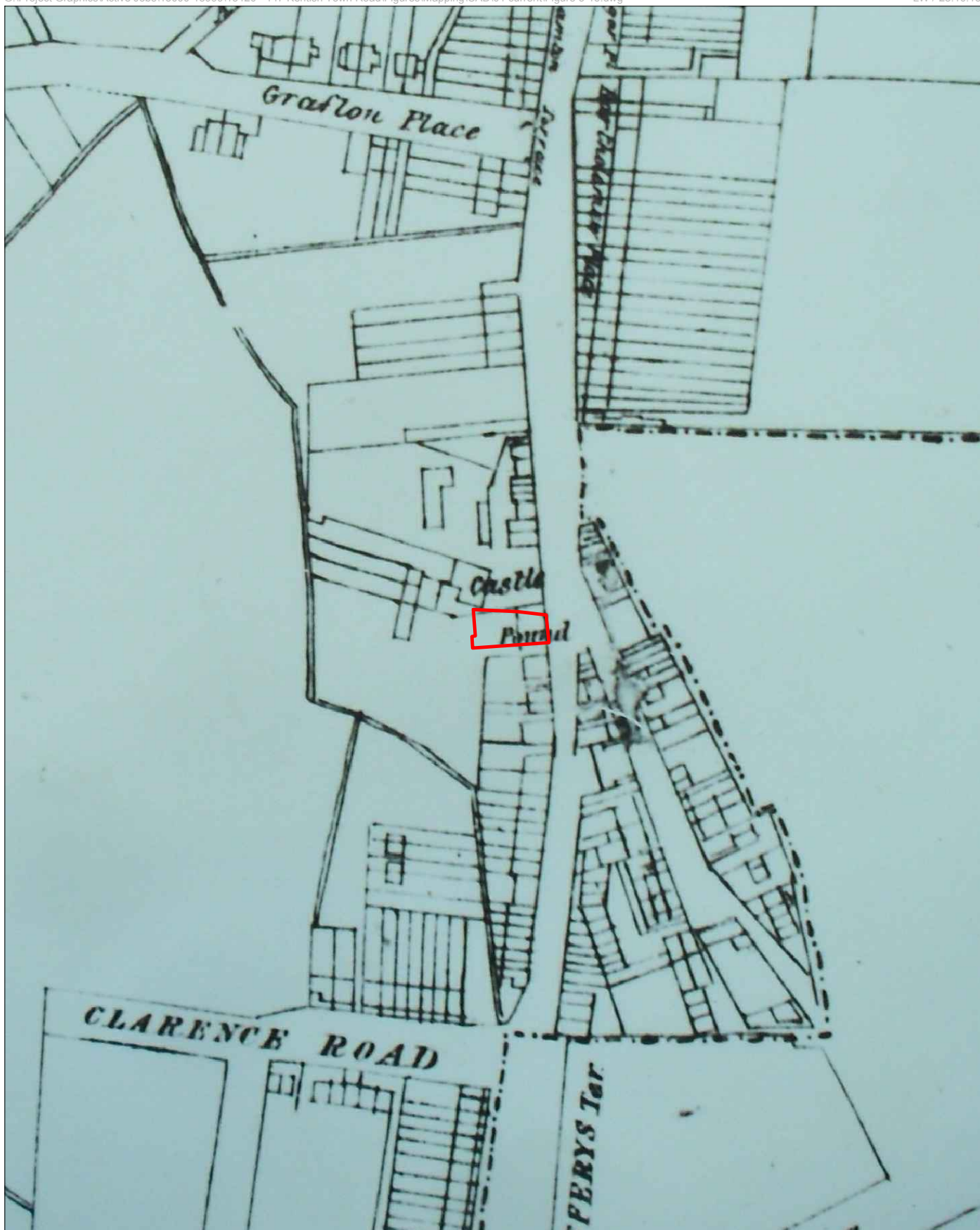
 Site Boundary



Planning • Heritage
www.cgms.co.uk

Not to Scale:
Illustrative Only

Figure 4:
1801 Thompson Map of
St Pancras Parish



 Site Boundary



Planning • Heritage
www.cgms.co.uk

Not to Scale:
Illustrative Only

Figure 5:
1842 Plan of the Hamlet
of Kentish Town



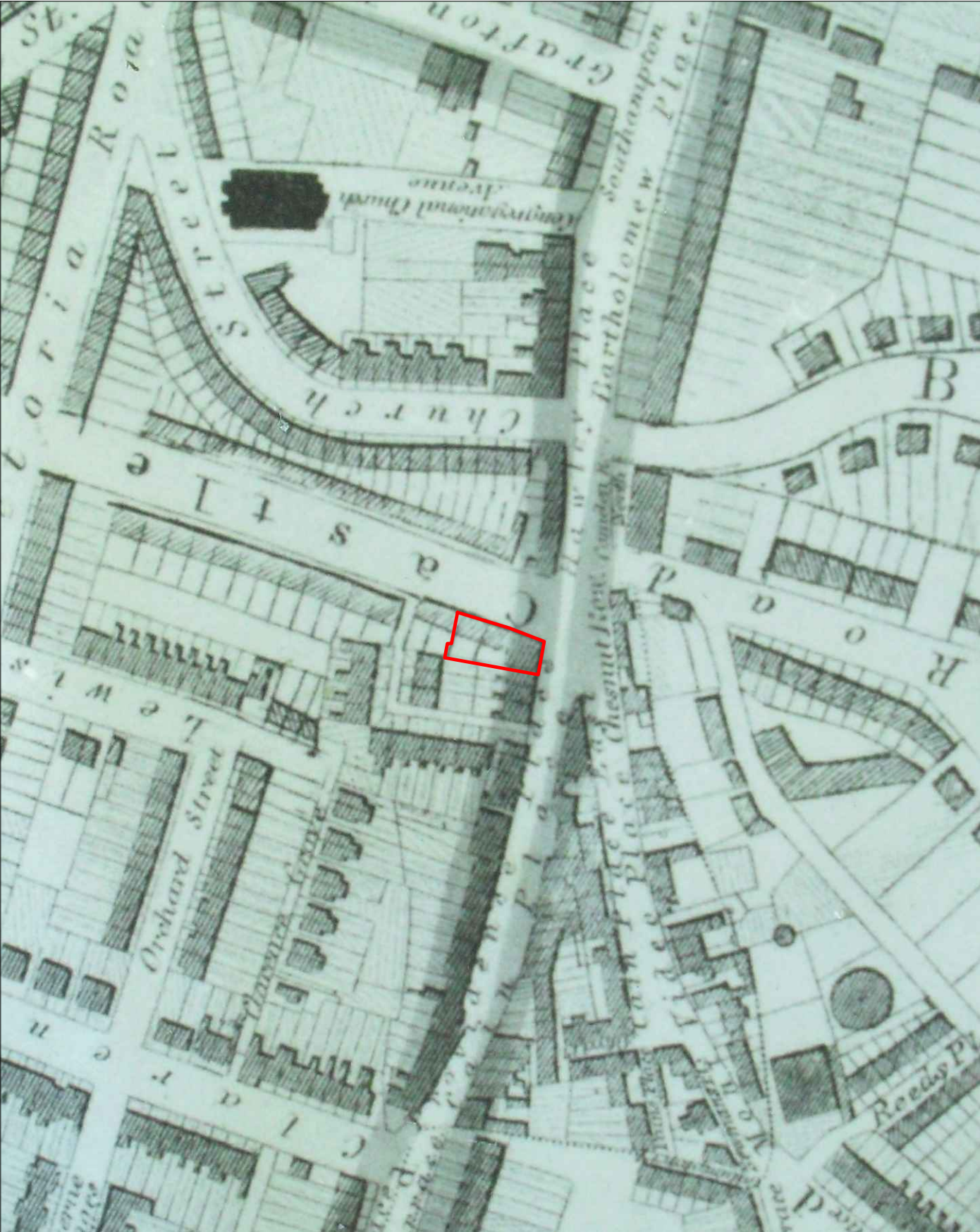
Site Boundary



Planning • Heritage
www.cgms.co.uk

Not to Scale:
Illustrative Only

Figure 6:
1849 Map of the Parish
of St Pancras



Site Boundary



Planning • Heritage
www.cgms.co.uk

Not to Scale:
Illustrative Only

Figure 7:
1868 St Pancras
Parish Map



 Site Boundary



Planning • Heritage
www.cgms.co.uk

Not to Scale:
Illustrative Only

Figure 8:
1870 Ordnance Survey



 Site Boundary



Planning • Heritage
www.cgms.co.uk

Not to Scale:
Illustrative Only

Figure 9:
1894-6 Ordnance Survey



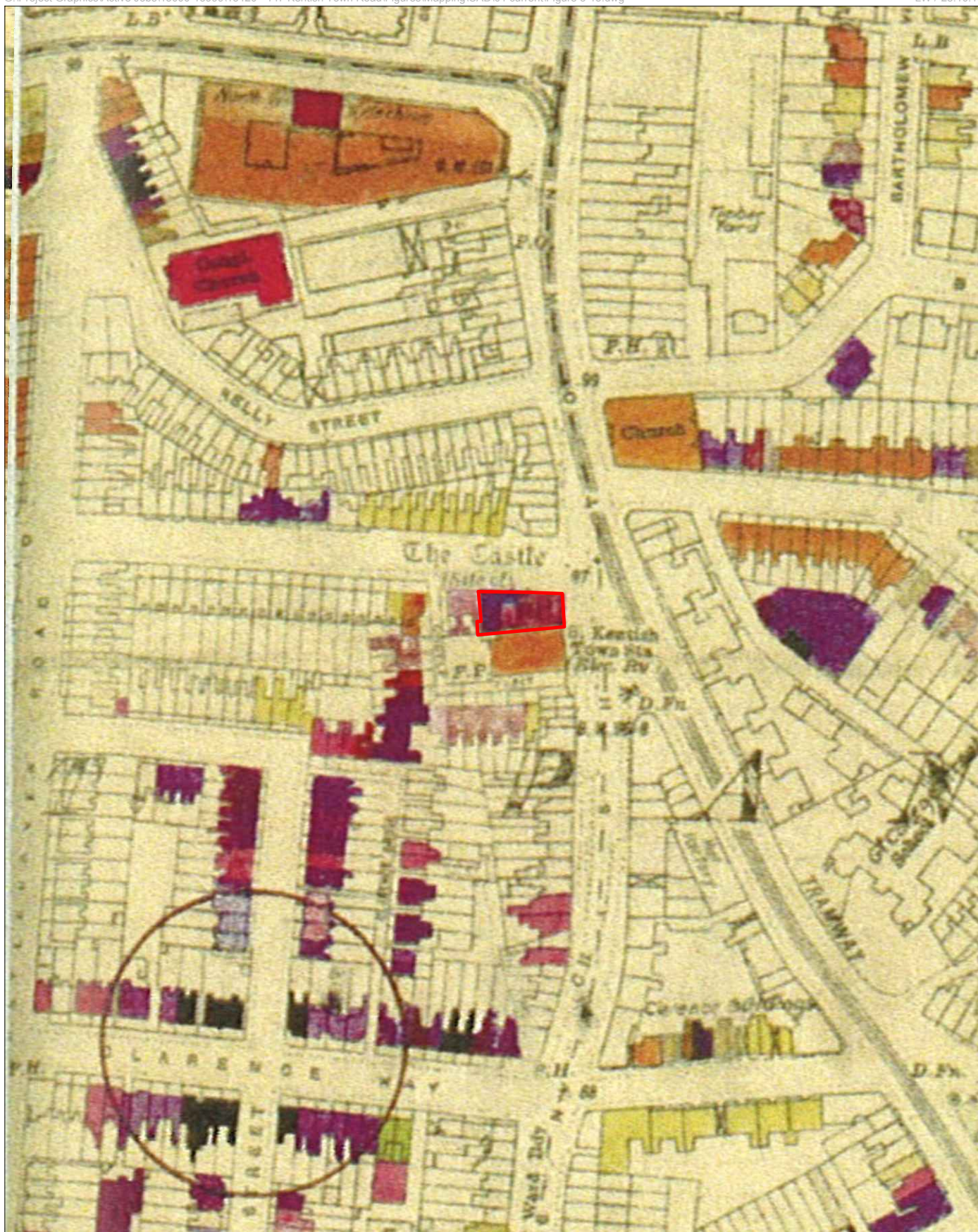
 Site Boundary



Planning • Heritage
www.cgms.co.uk

Not to Scale:
Illustrative Only

Figure 10:
1936-9 Ordnance Survey



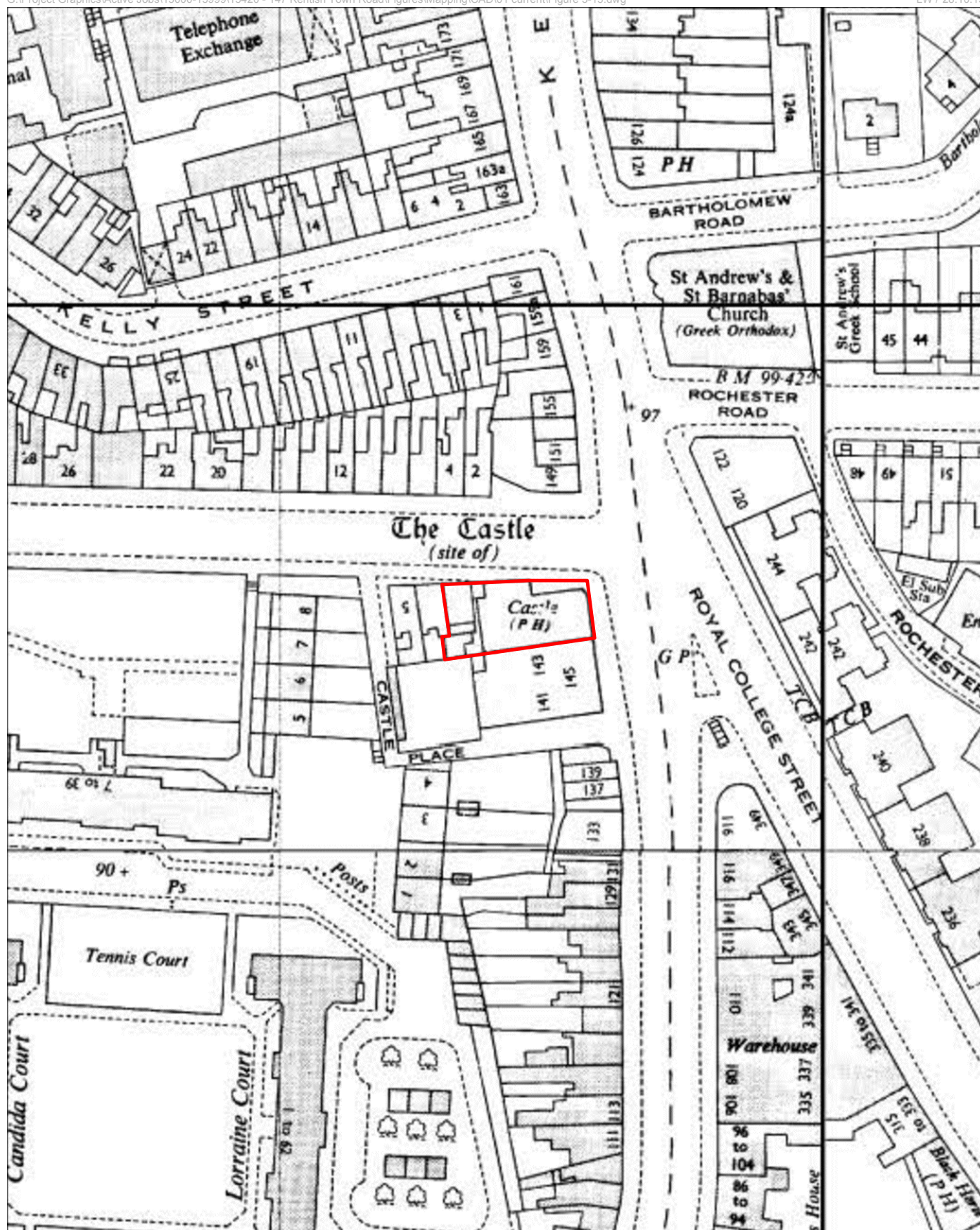
Site Boundary



Planning • Heritage
www.cgms.co.uk

Not to Scale:
Illustrative Only

Figure 11:
1946 World War Two
Bomb Damage Map



 Site Boundary



Planning • Heritage
www.cgms.co.uk

Not to Scale:
Illustrative Only

Figure 12:
1963-1969
Ordnance Survey

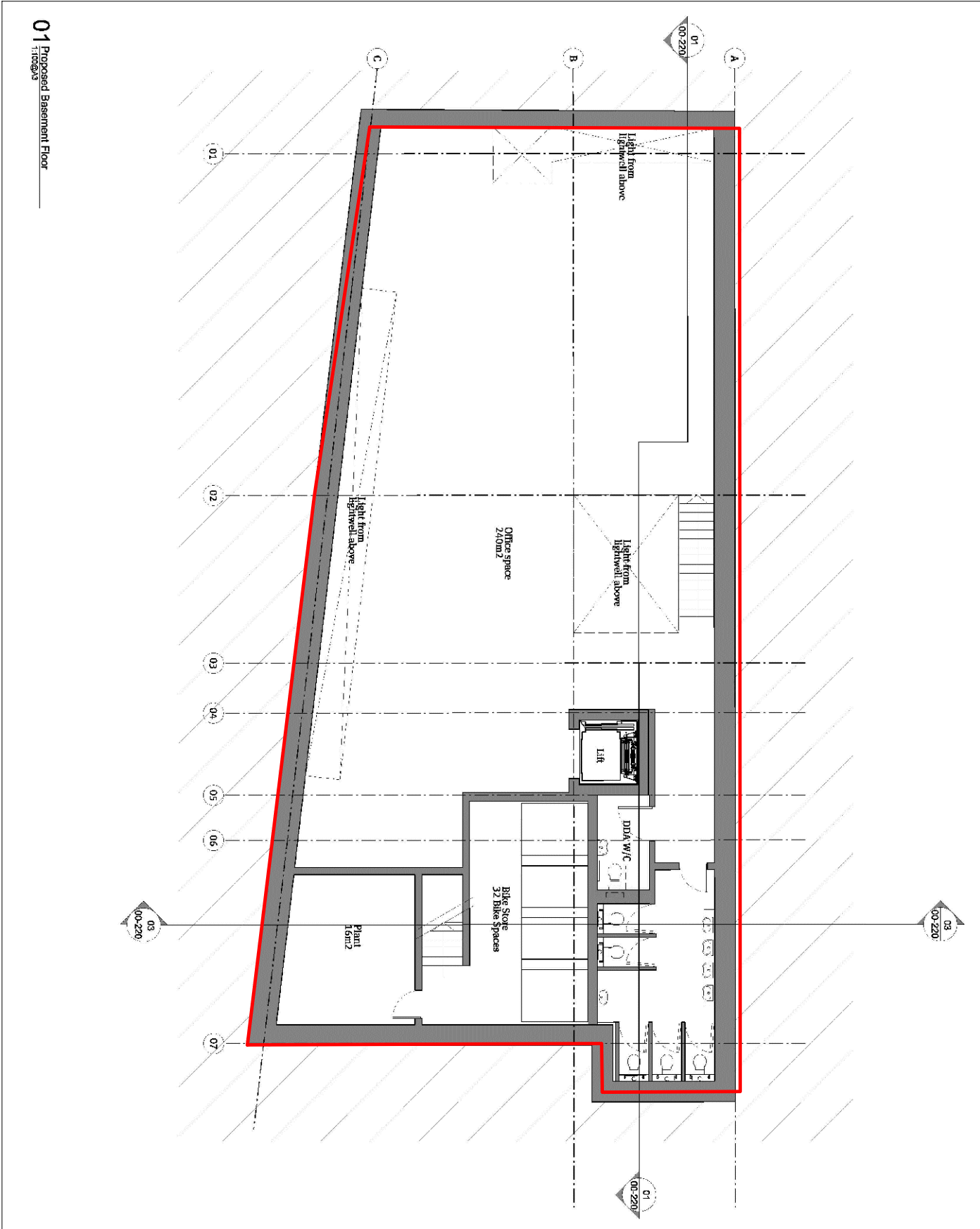



 Site Boundary





Not to Scale:
Illustrative Only

Figure 13:
2012 Ordnance Survey



 Site Boundary

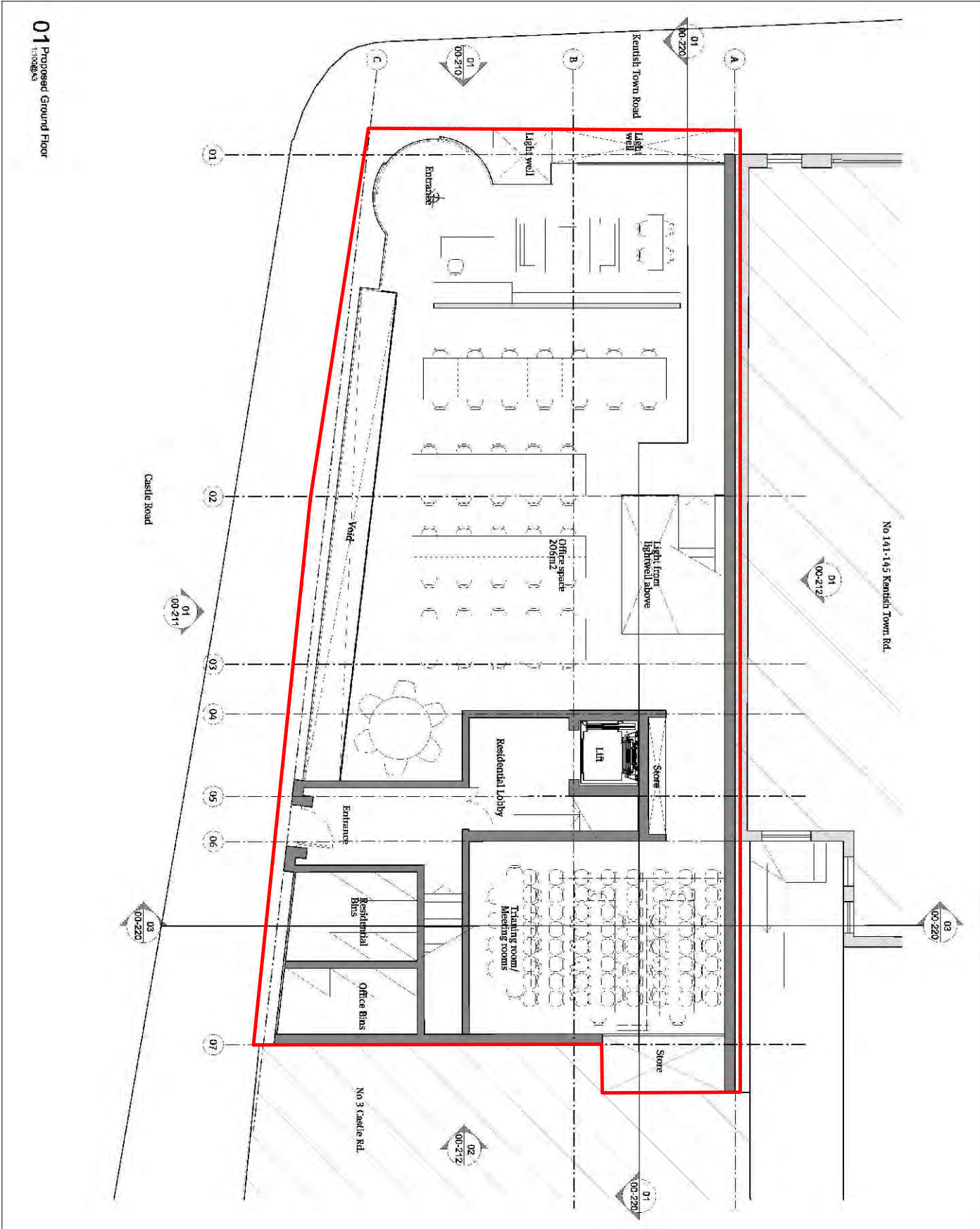




Planning • Heritage
www.cgms.co.uk

Not to Scale:
Illustrative Only

Figure 14:
Redevelopment proposals:
basement



01 Proposed Ground Floor

1:100 @ A3

Site Boundary



Not to Scale:
Illustrative Only

Figure 15:
Redevelopment proposals:
ground floor



Plate 1: 1800 The Castle Tavern Kentish Town Road



Plate 2: 1978 The Castle, from Castle Road