

CLIENT:

The Co-operative Food

PROJECT TITLE:

The Co-operative Food - Camden - Camley Street

OPEN  
HERE

REVISION HISTORY:

REV	R1	R2	R3	R4	R5
DATE	20.08.14	22.08.14	26.08.14	02.09.14	04.09.14
INITIALS	SB	SB	SB	SB	SB

colours shown are purely representative, please match to colour references only !

NOTE:  
All dimensions are in millimetres u.s.o. and are approximate only.

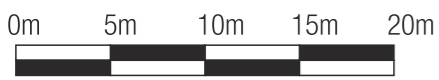
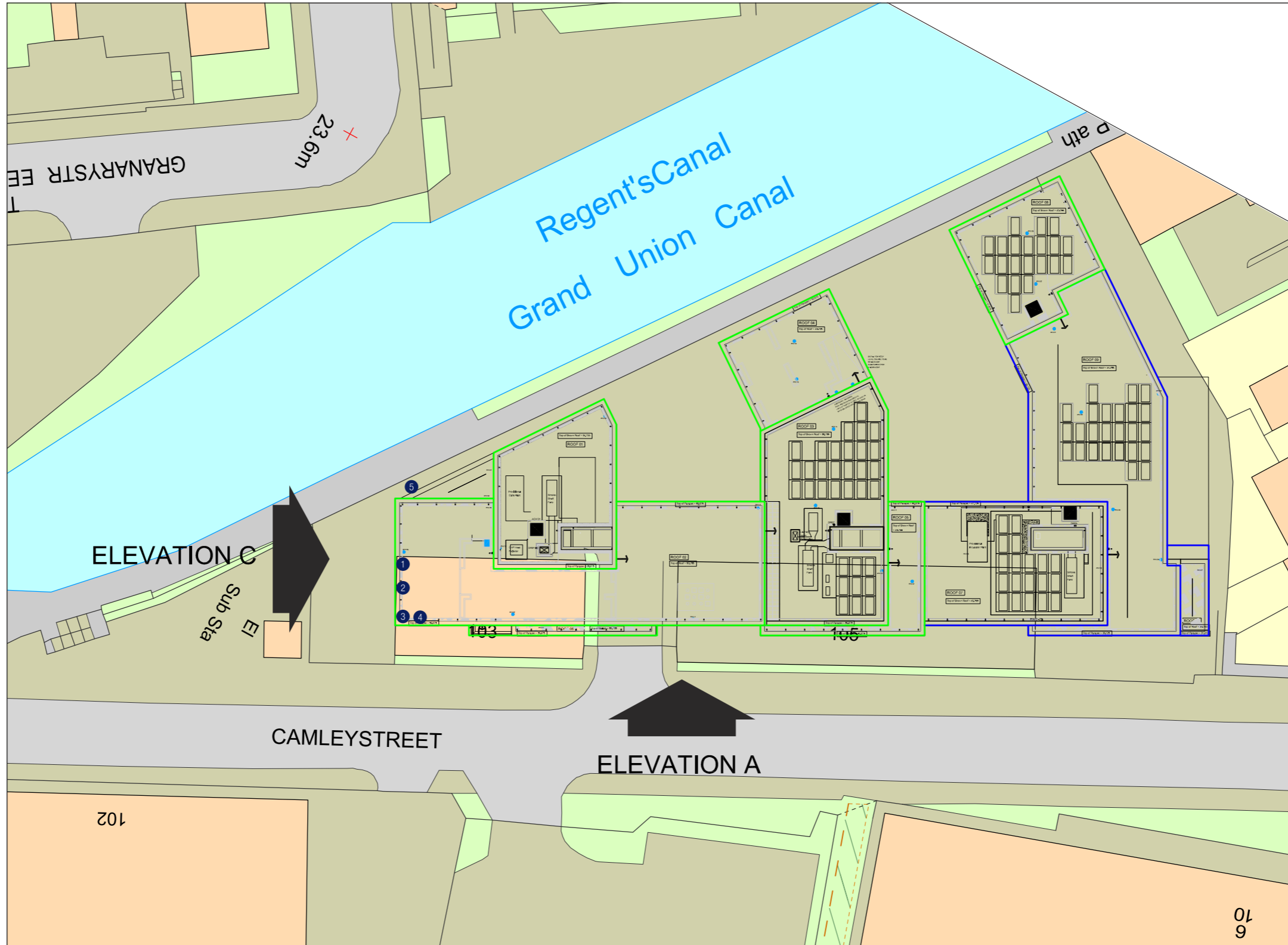


Sandfield Close  
Moulton Park  
Northampton  
United Kingdom  
NN3 6EU

Tel: +44 (0)1604 790000  
Fax: +44 (0)1604 790190  
Email: info@hawes.co.uk  
Web: www.hawes.co.uk



Site Plan



Elevations



ELEVATION C



Elevations

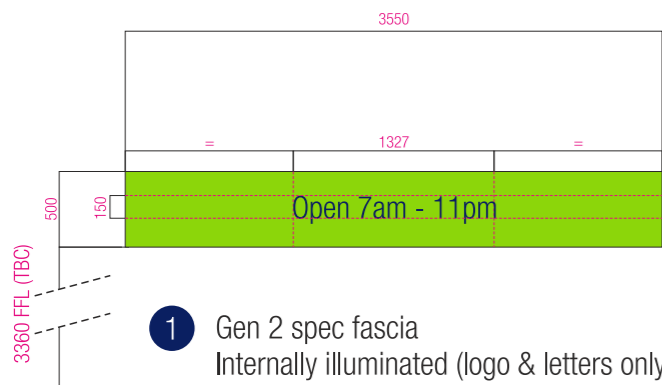
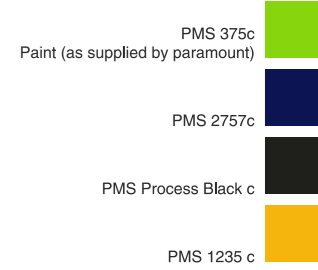


ELEVATION A CAMLEY STREET

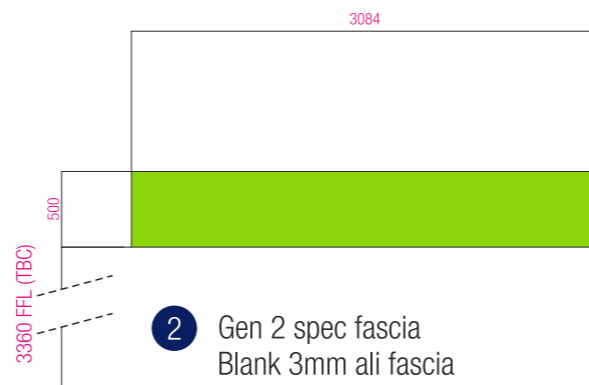


Proposed Signage

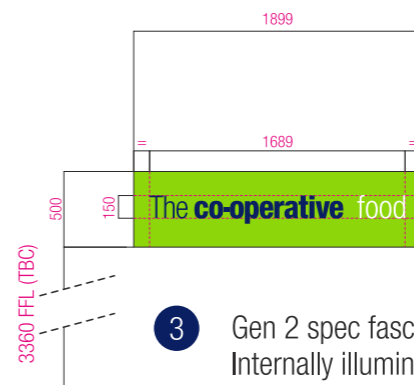
**THESE SIGNS WILL BE FITTED INTO THE WINDOW FRAMEWORK AND WILL NEED A REMOVABLE BACK TO GAIN ACCESS TO THE LED'S / DRIVERS. FIXINGS WILL BE ALONG THE TOP AND DOWN THE SIDES.**



- 1 Gen 2 spec fascia  
Internally illuminated (logo & letters only to illuminate)  
3mm ali fascia  
Sign to be fixed behind glass store front.  
Open hours = fret cut backed up acrylic letters with vinyl applied to face  
Scale 1:50 @ A3  
Part number: XXXxxxxx-xxxx  
**1 off**



- 2 Gen 2 spec fascia  
Blank 3mm ali fascia  
Sign to be fixed behind glass store front.  
Scale 1:50 @ A3  
Part number: XXXxxxxx-xxxx  
**1 off**

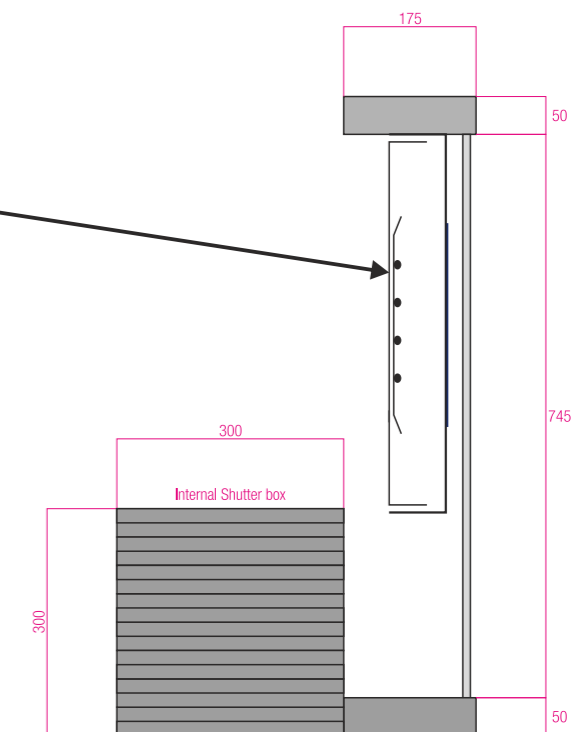
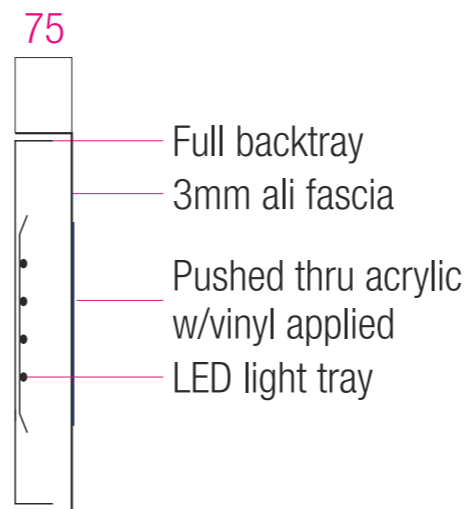


- 3 Gen 2 spec fascia  
Internally illuminated (logo & letters only to illuminate)  
3mm ali fascia  
Sign to be fixed behind glass store front.  
Logo = acrylic letters pushed through 2mm with vinyl applied to face  
Scale 1:50 @ A3  
Part number: XXXxxxxx-xxxx  
**1 off**

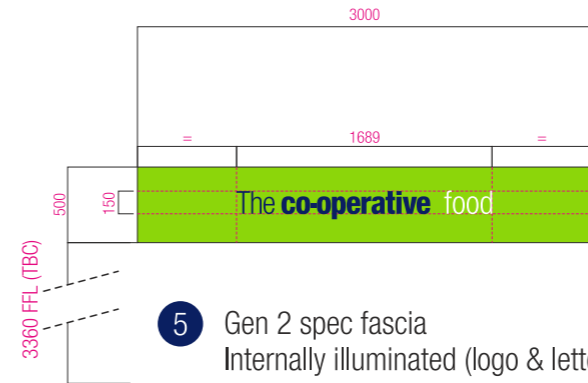


- 4 Gen 2 spec fascia  
Internally illuminated (logo & letters only to illuminate)  
3mm ali fascia  
Sign to be fixed behind glass store front.  
Logo = acrylic letters pushed through 2mm with vinyl applied to face  
Scale 1:50 @ A3  
Part number: XXXxxxxx-xxxx  
**1 off**

Fascia Section - 1:10



# Proposed Signage



### Fascia Section - NTS



- 5 Gen 2 spec fascia  
Internally illuminated (logo & letters only to illuminate)  
3mm ali fascia  
Logo = acrylic letters pushed through 2mm with vinyl applied to face  
Scale 1:50 @ A3  
Part number: XXXxxxxxx-xxxx  
**1 off**

Paint (as supplied by paramount)

- PMS 375c
- PMS 2757c
- PMS Process Black c
- PMS 1235 c