

# Tree Constraints Plan

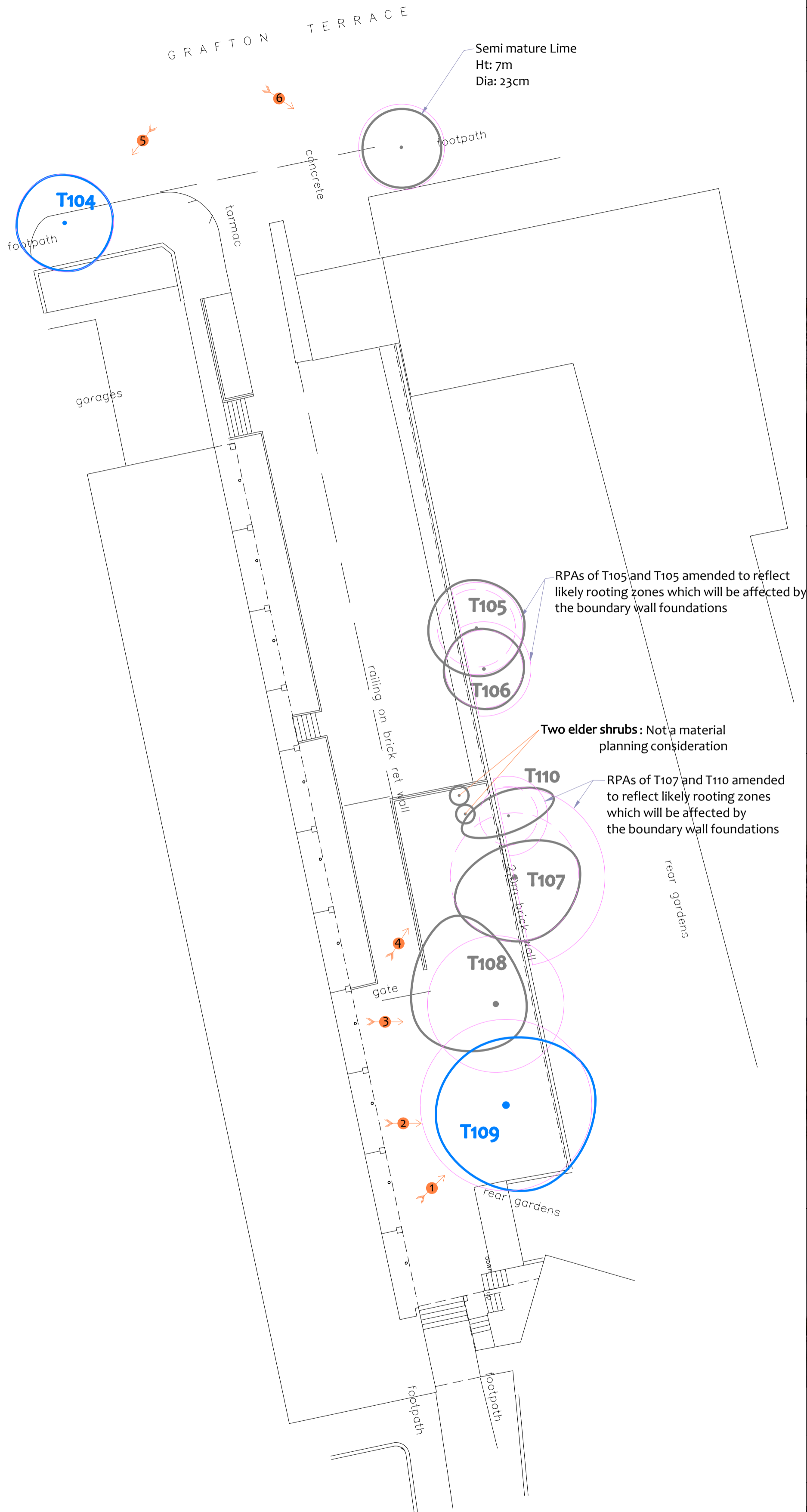


Photo 1



Photo 2



Photo 3



Photo 4



Photo 5



Photo 6

Tree Ref.	Species	Height (m)	Root Protection Area	
			Radius (m)	Area (m <sup>2</sup> )
T104	Norway Maple	8	3.0	28
T105	Cherry Laurel	5	2.4	18
T106	Rowan	6	2.4	18
T107	Sycamore	7	4.0	49
T108	Cherry	8	4.2	55
T109	Norway Maple	11	5.3	88
T110	Ash	5.5	1.8	10

**1** Photo 1

**MN** = Measured North:  
Canopy spreads are sometimes measured to an approximate N defined by site features. Often more accurate, especially where rows of trees are not aligned N-S or E-W.

**Tree Retention Categories**  
Stems & canopies shown

- ⊙ Category A tree
- ⊙ Category B tree
- ⊙ Category C tree
- ⊙ Category U tree

⊙ Trees of high quality with an estimated life expectancy of 40+ years. Usually large trees with significant presence or smaller trees with excellent form. Retention of these trees is highly desirable.

⊙ Trees of moderate quality with a life expectancy of 20+ years. Usually maturing trees, or younger trees with good form. Retention of these trees is desirable though less than Category A trees

⊙ Unremarkable trees of low quality and merit. Individual specimens are not considered to be a material planning consideration.

⊙ Trees unsuitable for retention due to their very poor condition.

Drawing No: **CCL 09506B** /TCP Rev: 1

Title: **Tree Constraints Plan**  
(Existing Layout)

Site: **Adjacent Maitland Park**

Scale: 1:200

Paper Size: A2

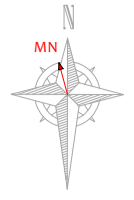
BS 5837 Root Protection Area (radius = 12xstem diameter)

Root Protection Area needing amendment due to site conditions, e.g. presence of existing road or building.

Root Protection Area having been amended to account for site conditions

T1 = Tree No 1    G2 = Group No 2    H3 = Hedge No 3

Proposed Layout (Pale Green)

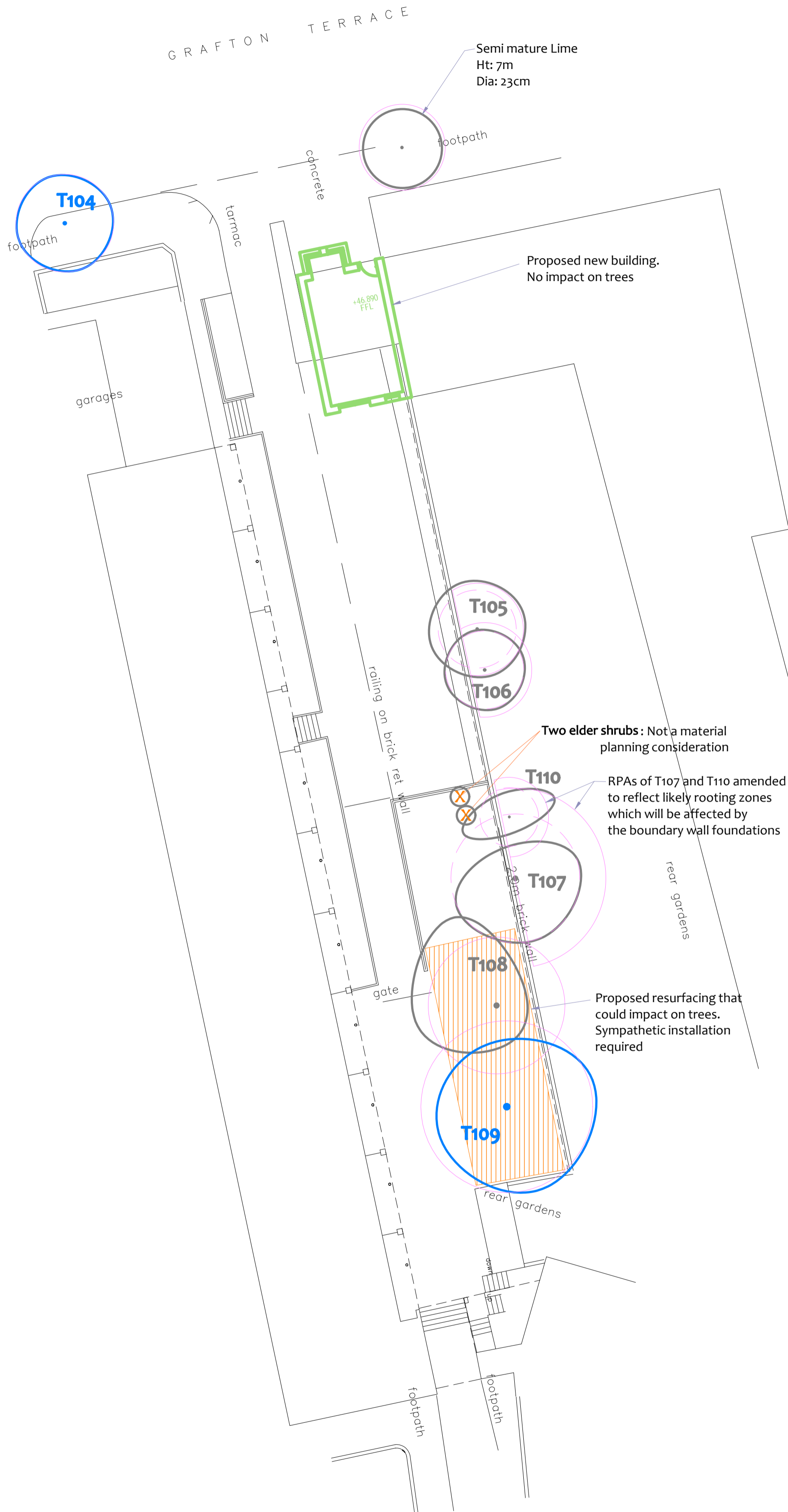


Impact Assessment Plan

(Existing Layout with Proposals Overlaid)

No tree removal or pruning is required to facilitate the proposed development works.

However, the two elder shrubs growing to the north of T08 may be removed to facilitate resurfacing works



Tree Ref.	Species	Height (m)	Root Protection Area	
			Radius (m)	Area (m <sup>2</sup> )
T104	Norway Maple	8	3.0	28
T105	Cherry Laurel	5	2.4	18
T106	Rowan	6	2.4	18
T107	Sycamore	7	4.0	49
T108	Cherry	8	4.2	55
T109	Norway Maple	11	5.3	88
T110	Ash	5.5	1.8	10

**Tree Retention Categories**  
Stems & canopies shown

- ⊙ Category A tree
- ⊙ Category B tree
- ⊙ Category C tree
- ⊙ Category U tree

⊙ Trees of high quality with an estimated life expectancy of 40+ years. Usually large trees with significant presence or smaller trees with excellent form. Retention of these trees is highly desirable.

⊙ Trees of moderate quality with a life expectancy of 20+ years. Usually maturing trees, or younger trees with good form. Retention of these trees is desirable though less than Category A trees

⊙ Unremarkable trees of low quality and merit. Individual specimens are not considered to be a material planning consideration.

⊙ Trees unsuitable for retention due to their very poor condition.

Drawing No: **CCL 09506B** / IAP Rev: 1

Title: **Impact Assessment Plan**  
(Proposals Overlaid)

Site: **Adjacent Maitland Park**

Scale: 1:200

Paper Size: A2

BS 5837 Root Protection Area (radius = 12xstem diameter)

Root Protection Area needing amendment due to site conditions, e.g. presence of existing road or building.

Root Protection Area having been amended to account for site conditions

T1 = Tree No 1    G2 = Group No 2    H3 = Hedge No 3

MN = Measured North:

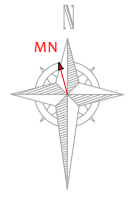
Canopy spreads are sometimes measured to an approximate N defined by site features. Often more accurate, especially where rows of trees are not aligned N-S or E-W.

X Tree to be removed to facilitate the proposal

X Tree to be removed due to its low quality

Proposed pruning



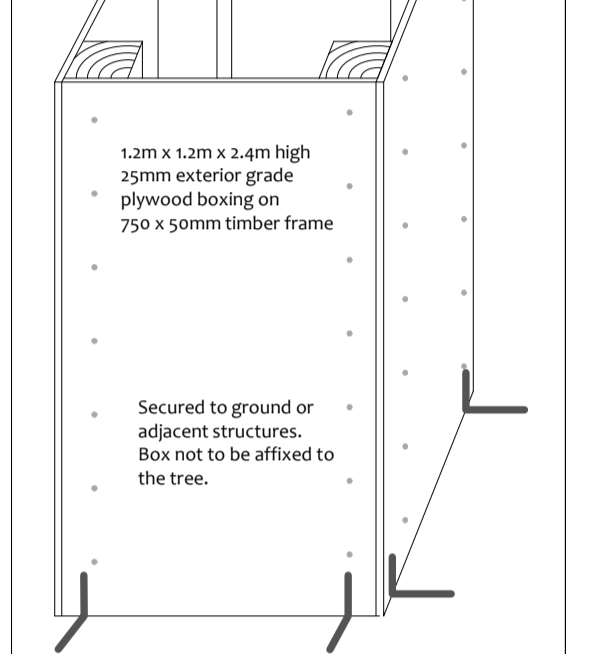


# Tree Protection Plan

## Tree Protection Barriers:

	Fixed protective barrier: The 'In-Ground System' or the 'Backstay System'. To remain in place for all construction activity		Construction Exclusion Zone Stem protected to a height of 2.5m with thick cloth & wire
	Moveable protective barrier: The 'Backstay System'. To remain in place except when approved works are being undertaken in the Restricted Zone		Tree Protection Boxing 1.2 x 1.2 x 2.4m high 25mm plywood
	Orange Barrier Mesh Fencing: 1.1m, on steel fencing pins and wooden posts		To remain in place throughout all construction activity

## Tree Protection Plywood Boxes (indicated by a 1mm turquoise line)

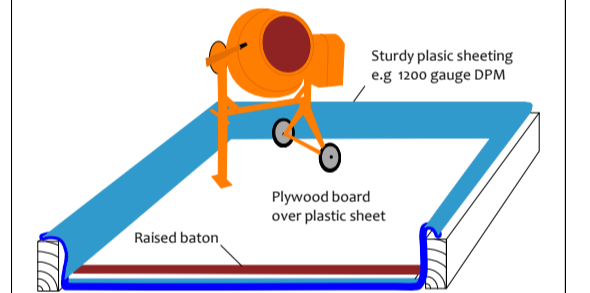


## Restricted Activity Zones

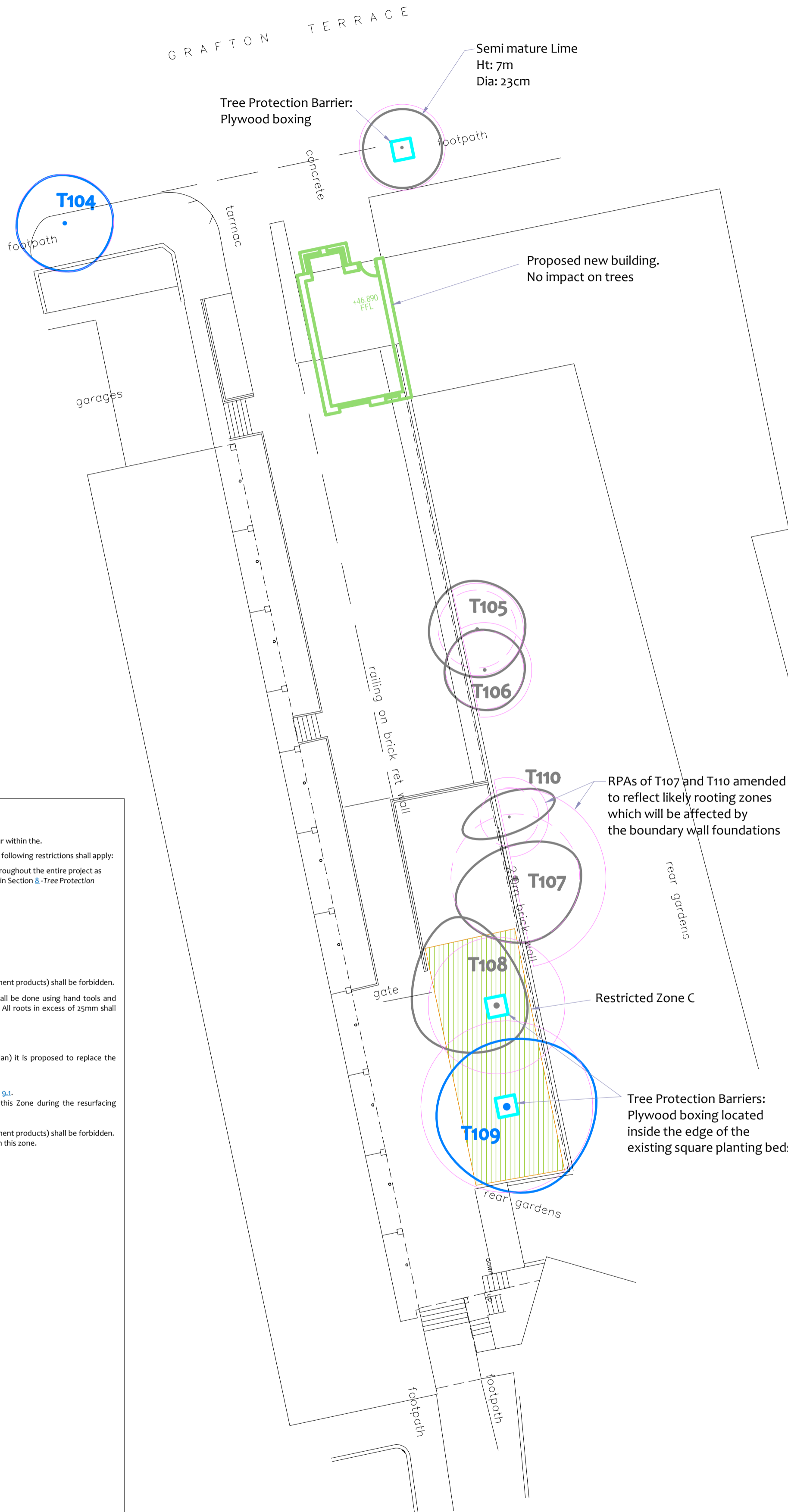
Restrictions are detailed within the accompanying Method Statement

	Restricted Zone C
--	-------------------

## Dedicated Mixing and Cleaning Area



- 6.5. Construction Exclusion Zones**
- 6.5.1. No works or ground disturbance whatsoever shall occur within the.
- 6.5.2. Within square planted areas around T108 and T109 the following restrictions shall apply:
- Plywood boxing shall be erected and maintained throughout the entire project as indicated on the Tree Protection Plan and specified in Section 8 - Tree Protection Barriers.
  - No construction activity whatsoever shall occur.
  - No tree works shall be undertaken.
  - No alterations of ground levels or conditions.
  - No chemicals or cement washings permitted.
  - No excavation whatsoever.
  - No temporary structures.
  - No spoil shall be stored.
  - No fires shall be permitted.
  - All hazardous materials (including non-essential cement products) shall be forbidden.
- 6.5.3. If the edges of the planters require replacing, this shall be done using hand tools and without excavating beneath the existing foundations. All roots in excess of 25mm shall be kept intact.
- 6.6. Restricted Activity Zone C**
- 6.6.1. Within this zone (indicated on the Tree Protection Plan) it is proposed to replace the existing surface. The following restrictions shall apply:
- No other building works shall be permitted.
  - Further detailed restrictions are specified in Section 9.1.
  - No vehicle or plant machinery shall drive within this Zone during the resurfacing operation.
  - No fires shall be permitted.
  - All hazardous materials (including non-essential cement products) shall be forbidden.
  - No machinery in excess of 4m tall shall pass through this zone.



Tree Ref.	Species	Height (m)	Root Protection Area	
			Radius (m)	Square (m)
T104	Norway Maple	8	3.0	28
T105	Cherry Laurel	5	2.4	18
T106	Rowan	6	2.4	18
T107	Sycamore	7	4.0	49
T108	Cherry	8	4.2	55
T109	Norway Maple	11	5.3	88
T110	Ash	5.5	1.8	10

**Tree Retention Categories**  
Stems & canopies shown

- Category A tree
- Category B tree
- Category C tree
- Category U tree

Trees of high quality with an estimated life expectancy of 40+ years. Usually large trees with significant presence or smaller trees with excellent form. Retention of these trees is highly desirable.

Trees of moderate quality with a life expectancy of 20+ years. Usually maturing trees, or younger trees with good form. Retention of these trees is desirable though less than Category A trees

Unremarkable trees of low quality and merit. Individual specimens are not considered to be a material planning consideration.

Trees unsuitable for retention due to their very poor condition.

Drawing No: CCL 09506B / TPP Rev: 1

Title: Tree Protection Plan

Site: Adjacent Maitland Park

Scale: 1:200

Paper Size: A2

BS 5837 Root Protection Area (radius = 12xstem diameter)

Root Protection Area needing amendment due to site conditions, e.g. presence of existing road or building.

Root Protection Area having been amended to account for site conditions

T1 = Tree No 1 G2 = Group No 2 H3 = Hedge No 3

MN = Measured North:

Canopy spreads are sometimes measured to an approximate N defined by site features. Often more accurate, especially where rows of trees are not aligned N-S or E-W.

