



Photo 1



Photo 5



Photo 7



Photo 9



Photo 12



Photo 14



Photo 18



Photo 21



Photo 25

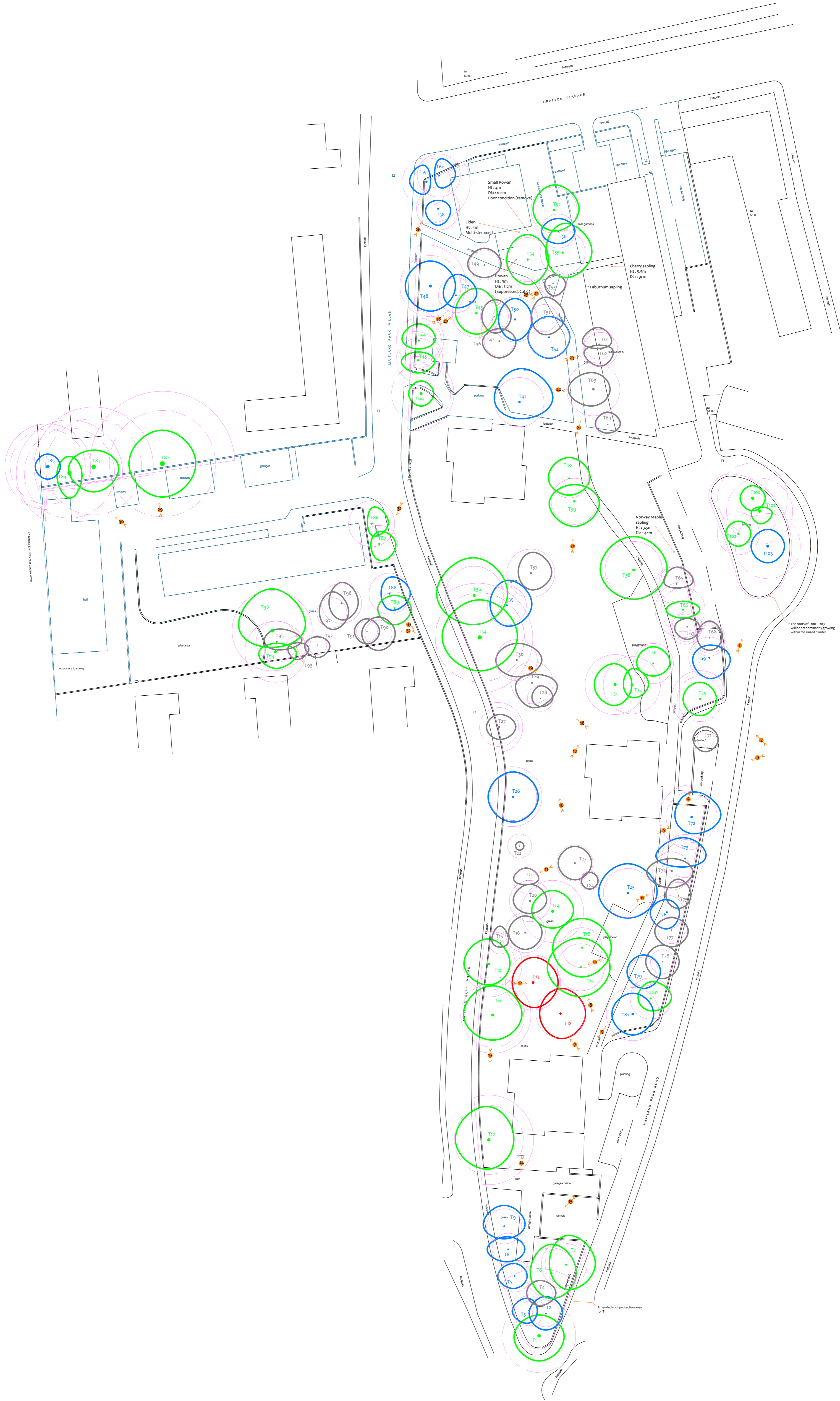


Photo 32

See the accompanying report for more photographs



Tree Constraints Plan



Tree Ref.	Species	Height (m)	Radius (m)	Area (sqm)
T1	Beech	14	8.8	241
T2	Lime	12	3.2	33
T3	Purple Norway Maple	13	3.6	41
T4	Lime	10	3.1	31
T5	Lime	10	3.8	46
T6	Lime	15	6.1	118
T7	Silver Maple	14	5.0	80
T8	Purple Norway Maple	10	3.8	46
T9	Variiegated Sycamore	10	4.2	56
T10	Sycamore	16	8.3	215
T11	Lime	16	7.7	186
T12	Horse Chestnut	9	5.9	109
T13	Horse Chestnut	11	6.6	137
T14	Lime	18	6.2	122
T15	Silver Birch	9	2.6	22
T16	Purple Plum	8	4.8	72
T17	Ash	16	5.6	100
T18	Ash	16	4.8	72
T19	Lime	18	7.4	174
T20	Swedish Whitebeam	8	4.9	76
T21	Silver Birch	10	3.0	28
T22	Silver Birch	6.5	2.9	26
T23	Purple Norway Maple	8	4.3	59
T24	Silver Birch	7	2.3	16
T25	Cherry	13	5.9	109
T26	Cherry	8	5.6	100
T27	Hawthorn	5.5	4.7	69
T28	Hawthorn	3.5	3.1	31
T29	Whitebeam	6	5.0	80
T30	Ash	12	4.9	76
T31	Lime	16	7.2	163
T32	Lime	14	6.8	147
T33	Lime	15	4.8	72
T34	Ash	21	10.7	358
T35	Sycamore	13	4.7	69
T36	Sycamore	18	7.0	152
T37	Whitebeam	9	5.8	104
T38	Sycamore	18	6.8	147
T39	Norway Maple	13	5.5	96
T40	Lime	14	4.7	69
T41	Cherry	11	5.9	109
T42	Rowan	10	3.6	41
T43	Lime	13	5.3	88
T44	Lime	13	5.4	92
T45	Norway Maple	14	5.8	104
T46	Lime	10	3.4	36
T47	Lime	14	4.2	55
T48	Cherry	15	7.3	168
T49	Whitebeam	10	3.6	41
T50	Norway Maple	15	5.4	92
T51	Lime	10	3.2	33
T52	Norway Maple	13	4.9	76
T53	Rowan	4.5	3.2	33
T54	Ash	16	5.3	88
T55	Ash	18	5.4	92
T56	Ash	16	4.1	52
T57	Ash	15	5.5	96
T58	Lime	13	5.2	84
T59	Lime	12	5.8	104
T60	Lime	12	5.2	84
T61	Cherry	12	3.6	41
T62	Elder	6	4.1	52
T63	Cherry	7	6.4	127
T64	Silver Birch	6	2.8	24
T65	Cherry	10	4.3	59
T66	Lime	15	5.3	88
T67	Cherry	9	3.6	41
T68	Cherry	9	3.7	43
T69	Cherry	10	4.9	76
T70	Lime	14	5.4	92
T71	Lime	6	2.0	13
T72	Cherry	14	6.1	118
T73	Ash-leaved Maple	12	4.6	65
T74	Ash	17	4.6	65
T75	Ash-leaved Maple	10	3.2	33
T76	Ash	17	4.1	52
T77	Ash-leaved Maple	7	3.2	33
T78	Ash-leaved Maple	7	2.9	26
T79	Ash	15	3.5	38
T80	Ash	17	4.9	76
T81	Cherry	15	6.4	127
T82	London Plane	24	12.7	508
T83	London Plane	24	11.5	417
T84	London Plane	21	10.8	366
T85	Lime	14	9.0	254
T86	Lime	15	5.5	96
T87	Lime	15	4.4	62
T88	Lime	14	4.9	76
T89	Lime	16	3.8	46
T90	Sycamore	9	3.2	33
T91	Sycamore	8	2.5	20
T92	Sycamore	5	2.3	16
T93	Swedish Whitebeam	6	2.5	20
T94	Silver Maple	20	7.3	168
T95	Silver Maple	16	4.9	76
T96	Silver Maple	24	9.6	290
T97	Apple	8	3.6	41
T98	Apple	11	4.8	72
T99	Lime	15	7.1	157
T100	Lime	15	8.4	222
T101	Lime	13	7.9	197
T102	Lime	15	5.0	80
T103	Lime	12	7.8	191

Drawing No: CCL 09056 / TCP Rev: 1
 Title: Tree Constraints Plan (Existing Layout)
 Site: Malmland Park
 Scale: 1:300
 Paper Size: A1

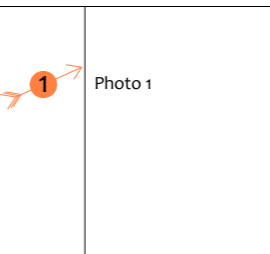


Tree Retention Categories
 Stems & canopies shown
 Category A tree
 Category B tree
 Category C tree
 Category U tree

Trees of high quality with an estimated life expectancy of 60+ years. Usually large trees with significant presence or smaller trees with excellent form. Retention of these trees is highly desirable.
 Trees of moderate quality with a life expectancy of 20+ years. Usually maturing trees, or younger trees with good form. Retention of these trees is desirable though less than Category A trees.
 Unremarkable trees of low quality and merit. Individual specimens are not considered to be a material planning consideration.
 Trees unsuitable for retention due to their very poor condition.

Tree Constraints Plan
 Existing Layout

B5 5837 Root Protection Area (radius = 12xstem diameter)
 Root Protection Area needing amendment due to site conditions, e.g. presence of existing road or building.
 Root Protection Area having been amended to account for site conditions.
 T1 = Tree No 1 G2 = Group No 2 H3 = Hedge No 3

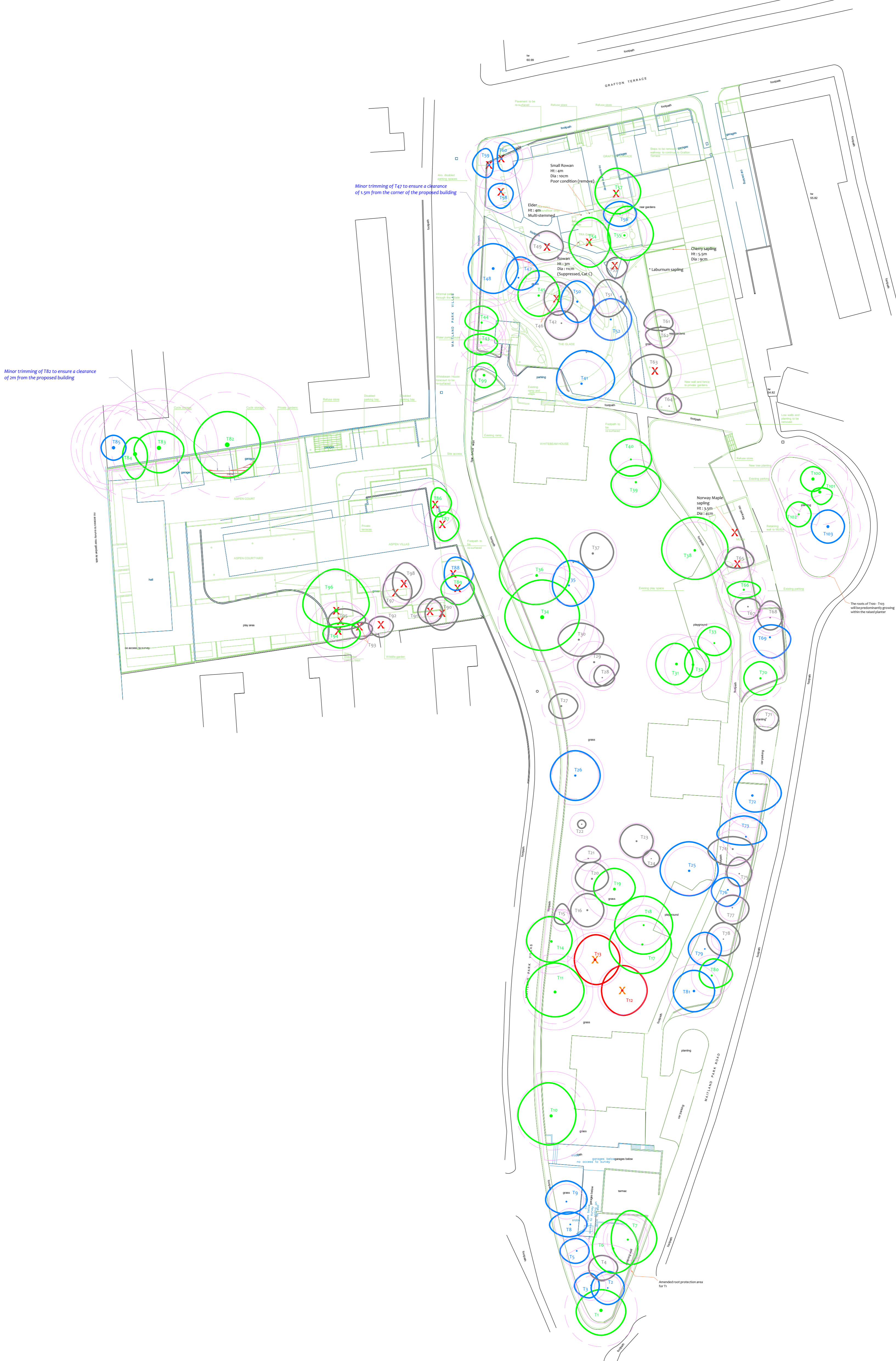


MN = Measured North
 Canopy spreads are sometimes measured to an approximate N defined by site features. Often more accurate, especially where rows of trees are not aligned N-S or E-W.



Tree Removal Plan

(Existing Layout with Proposals Overlaid)



Tree Ref.	Species	Height (m)	Radius (m)	Area (m ²)
T1	Beech	14	8.8	241
T2	Lime	12	3.2	33
T3	Purple Norway Maple	13	3.6	41
T4	Lime	10	3.1	31
T5	Lime	10	3.8	46
T6	Lime	15	6.1	118
T7	Silver Maple	14	5.0	80
T8	Purple Norway Maple	10	3.8	46
T9	Variiegated Sycamore	10	4.2	56
T10	Sycamore	16	8.3	215
T11	Lime	16	7.7	186
T12	Horse Chestnut	9	5.9	109
T13	Horse Chestnut	11	6.6	137
T14	Lime	18	6.2	122
T15	Silver Birch	9	2.6	22
T16	Purple Plum	8	4.8	72
T17	Ash	16	5.6	100
T18	Ash	16	4.8	72
T19	Lime	18	7.4	174
T20	Swedish Whitebeam	8	4.9	76
T21	Silver Birch	10	3.0	28
T22	Silver Birch	6.5	2.9	26
T23	Purple Norway Maple	8	4.3	59
T24	Silver Birch	7	2.3	16
T25	Cherry	13	5.9	109
T26	Cherry	8	5.6	100
T27	Hawthorn	5.5	4.7	69
T28	Hawthorn	3.5	3.1	31
T29	Whitebeam	6	5.0	80
T30	Ash	12	4.9	76
T31	Lime	16	7.2	163
T32	Lime	14	6.8	147
T33	Lime	15	4.8	72
T34	Ash	21	10.7	358
T35	Sycamore	13	4.7	69
T36	Sycamore	18	7.0	152
T37	Whitebeam	9	5.8	104
T38	Sycamore	18	6.8	147
T39	Norway Maple	13	5.5	96
T40	Lime	14	4.7	69
T41	Cherry	11	5.9	109
T42	Rowan	10	3.6	41
T43	Lime	13	5.3	88
T44	Lime	13	5.4	92
T45	Norway Maple	14	5.8	104
T46	Lime	10	3.4	36
T47	Lime	14	4.2	55
T48	Cherry	15	7.3	168
T49	Whitebeam	10	3.6	41
T50	Norway Maple	15	5.4	92
T51	Lime	10	3.2	33
T52	Norway Maple	13	4.9	76
T53	Rowan	4.5	3.2	33
T54	Ash	16	5.3	88
T55	Ash	18	5.4	92
T56	Ash	16	4.1	52
T57	Ash	15	5.5	96
T58	Lime	13	5.2	84
T59	Lime	12	5.8	104
T60	Lime	12	5.2	84
T61	Cherry	12	3.6	41
T62	Elder	6	4.1	52
T63	Cherry	7	6.4	127
T64	Silver Birch	6	2.8	24
T65	Cherry	10	4.3	59
T66	Lime	15	5.3	88
T67	Cherry	9	3.6	41
T68	Cherry	9	3.7	43
T69	Cherry	10	4.9	76
T70	Lime	14	5.4	92
T71	Lime	6	2.0	13
T72	Cherry	14	6.1	118
T73	Ash-leaved Maple	12	4.6	65
T74	Ash	17	4.6	65
T75	Ash-leaved Maple	10	3.2	33
T76	Ash	17	4.1	52
T77	Ash-leaved Maple	7	3.2	33
T78	Ash-leaved Maple	7	2.9	26
T79	Ash	15	3.5	38
T80	Ash	17	4.9	76
T81	Cherry	15	6.4	127
T82	London Plane	24	12.7	508
T83	London Plane	24	11.5	417
T84	London Plane	21	10.8	366
T85	Lime	14	9.0	254
T86	Lime	15	5.5	96
T87	Lime	15	4.4	62
T88	Lime	14	4.9	76
T89	Lime	16	3.8	46
T90	Sycamore	9	3.2	33
T91	Sycamore	8	2.5	20
T92	Sycamore	5	2.3	16
T93	Swedish Whitebeam	6	2.5	20
T94	Silver Maple	20	7.3	168
T95	Silver Maple	16	4.9	76
T96	Silver Maple	24	9.6	290
T97	Apple	8	3.6	41
T98	Apple	11	4.8	72
T99	Lime	15	7.1	157
T100	Lime	15	8.4	222
T101	Lime	13	7.9	197
T102	Lime	15	5.0	80
T103	Lime	12	7.8	191

Drawing No: CCL 09056 / TRP Rev: 1
 Title: Tree Removal Plan (Existing Layout with Proposals Overlaid)
 Site: Mailband Park
 Scale: 1:3000
 Paper Size: A1



Tree Retention Categories
 Stems & canopies shown

- Category A tree: Trees of high quality with an estimated life expectancy of 40+ years. Usually large trees with significant presence or smaller trees with excellent form. Retention of these trees is highly desirable.
- Category B tree: Trees of moderate quality with a life expectancy of 20+ years. Usually maturing trees, or younger trees with good form. Retention of these trees is desirable though less than Category A trees.
- Category C tree: Unremarkable trees of low quality and merit. Individual specimens are not considered to be a material planning consideration.
- Category U tree: Trees unsuitable for retention due to their very poor condition.

Tree Removal Plan

Existing Layout with Proposals Overlaid

BS 5837 Root Protection Area (Radius = 1/2 stem diameter)
 Root Protection Area needing amendment due to site conditions, e.g. presence of existing road or building.
 Root Protection Area having been amended to account for site conditions.

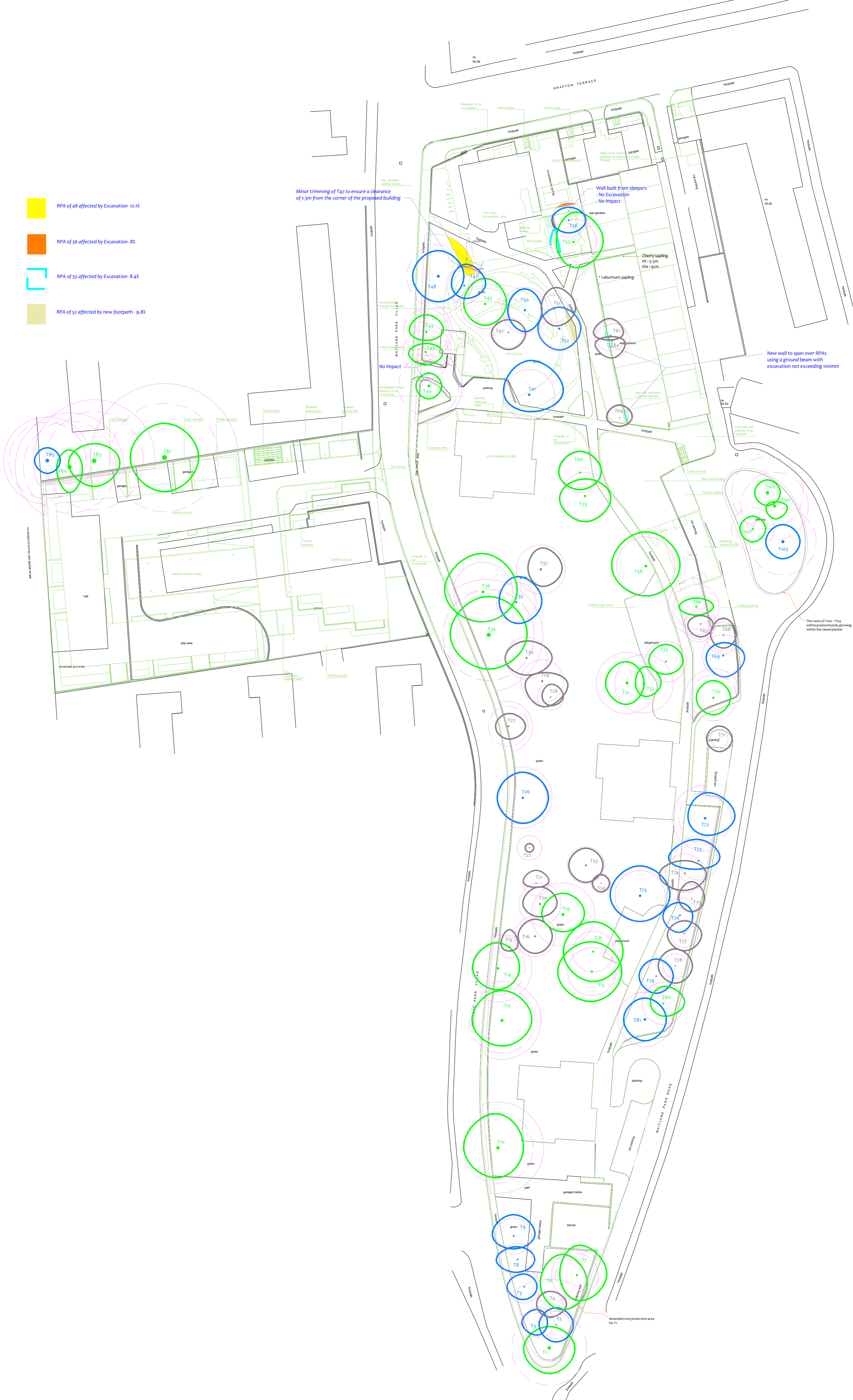
X Tree to be removed due to its low quality
X Tree to be removed due to its low quality

MN = Measured North
 Canopy spreads are sometimes measured to an approximate N defined by site features. Often more accurate, especially where rows of trees are not aligned N-S or E-W.



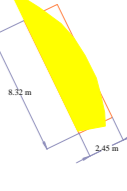
Impact Assessment Plan

(Existing Layout with Proposals Overlaid)

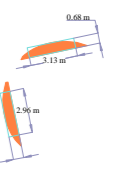


- RPA of 48 affected by Excavation - 12.4%
- RPA of 56 affected by Excavation - 8%
- RPA of 55 affected by Excavation - 8.4%
- RPA of 52 affected by new footpath - 9.8%

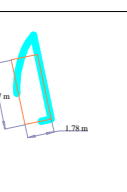
T48 RPA Affected by Excavation		
Total RPA (sqm)	RPA affected (sqm)	RPA affected (%)
168	20.4	12.1



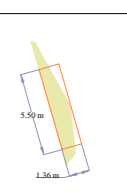
T56 RPA Affected by Excavation		
Total RPA (sqm)	RPA affected (sqm)	RPA affected (%)
52	4.2	8



T55 RPA Affected by Excavation		
Total RPA (sqm)	RPA affected (sqm)	RPA affected (%)
92	7.8	8.4



T52 RPA Affected by New Footpath		
Total RPA (sqm)	RPA affected (sqm)	RPA affected (%)
76	7.5	9.8



Tree Ref.	Species	Height (m)	Radius (m)	Area (sqm)
T1	Beech	14	8.8	241
T2	Lime	12	3.2	33
T3	Purple Norway Maple	13	3.6	41
T4	Lime	10	3.1	31
T5	Lime	10	3.8	46
T6	Lime	15	6.1	118
T7	Silver Maple	14	5.0	80
T8	Purple Norway Maple	10	3.8	46
T9	Variegated Sycamore	10	4.2	56
T10	Sycamore	16	8.3	215
T11	Lime	16	7.7	186
T12	Horse Chestnut	9	5.9	109
T13	Horse Chestnut	11	6.6	137
T14	Lime	18	6.2	122
T15	Silver Birch	9	2.6	22
T16	Purple Plum	8	4.8	72
T17	Ash	16	5.6	100
T18	Ash	16	4.8	72
T19	Lime	18	7.4	174
T20	Swedish Whitebeam	8	4.9	76
T21	Silver Birch	10	3.0	28
T22	Silver Birch	6.5	2.9	26
T23	Purple Norway Maple	8	4.3	59
T24	Silver Birch	7	2.3	16
T25	Cherry	13	5.9	109
T26	Cherry	8	5.6	100
T27	Hawthorn	5.5	4.7	69
T28	Hawthorn	3.5	3.1	31
T29	Whitebeam	6	5.0	80
T30	Ash	12	4.9	76
T31	Lime	16	7.2	163
T32	Lime	14	6.8	147
T33	Lime	15	4.8	72
T34	Ash	21	10.7	358
T35	Sycamore	13	4.7	69
T36	Sycamore	18	7.0	152
T37	Whitebeam	9	5.8	104
T38	Sycamore	18	6.8	147
T39	Norway Maple	13	5.5	96
T40	Lime	14	4.7	69
T41	Cherry	11	5.9	109
T42	Rowan	10	3.6	41
T43	Lime	13	5.3	88
T44	Lime	13	5.4	92
T45	Norway Maple	14	5.8	104
T46	Lime	10	3.4	36
T47	Lime	14	4.2	55
T48	Cherry	15	7.3	168
T49	Whitebeam	10	3.6	41
T50	Norway Maple	15	5.4	92
T51	Lime	10	3.2	33
T52	Norway Maple	13	4.9	76
T53	Rowan	4.5	3.2	33
T54	Ash	16	5.3	88
T55	Ash	18	5.4	92
T56	Ash	16	4.1	52
T57	Ash	15	5.5	96
T58	Lime	13	5.2	84
T59	Lime	12	5.8	104
T60	Lime	12	5.2	84
T61	Cherry	12	3.6	41
T62	Elder	6	4.1	52
T63	Cherry	7	6.4	127
T64	Silver Birch	6	2.8	24
T65	Cherry	10	4.3	59
T66	Lime	15	5.3	88
T67	Cherry	9	3.6	41
T68	Cherry	9	3.7	43
T69	Cherry	10	4.9	76
T70	Lime	14	5.4	92
T71	Lime	6	2.0	13
T72	Cherry	14	6.1	118
T73	Ash-leaved Maple	12	4.6	65
T74	Ash	17	4.6	65
T75	Ash-leaved Maple	10	3.2	33
T76	Ash	17	4.1	52
T77	Ash-leaved Maple	7	3.2	33
T78	Ash-leaved Maple	7	2.9	26
T79	Ash	15	3.5	38
T80	Ash	17	4.9	76
T81	Cherry	15	6.4	127
T82	London Plane	24	12.7	508
T83	London Plane	24	11.5	417
T84	London Plane	21	10.8	366
T85	Lime	14	9.0	254
T86	Lime	15	5.5	96
T87	Lime	15	4.4	62
T88	Lime	14	4.9	76
T89	Lime	16	3.8	46
T90	Sycamore	9	3.2	33
T91	Sycamore	8	2.5	20
T92	Sycamore	5	2.3	16
T93	Swedish Whitebeam	6	2.5	20
T94	Silver Maple	20	7.3	168
T95	Silver Maple	16	4.9	76
T96	Silver Maple	24	9.6	290
T97	Apple	8	3.6	41
T98	Apple	11	4.8	72
T99	Lime	15	7.1	157
T100	Lime	15	8.4	222
T101	Lime	13	7.9	197
T102	Lime	15	5.0	80
T103	Lime	12	7.8	191

Drawing No: CCL 09056 / IAP Rev: 1
 Title: Impact Assessment Plan (Existing Layout with Proposals Overlaid)
 Site: Mailland Park
 Scale: 1:3000
 Paper Size: A1



- Tree Retention Categories**
 Stems & Canopies Shown
- Category A tree
 - Category B tree
 - Category C tree
 - Category U tree
- Trees of high quality with an estimated life expectancy of 40+ years. Usually large trees with significant presence or smaller trees with excellent form. Retention of these trees is highly desirable.
- Trees of moderate quality with a life expectancy of 20+ years. Usually maturing trees, or younger trees with good form. Retention of these trees is desirable though less than Category A trees.
- Unremarkable trees of low quality and merit. Individual specimens are not considered to be a material planning consideration.
- Trees unsuitable for retention due to their very poor condition.

Impact Assessment Plan

Existing Layout with Proposals Overlaid

- BS 5837 Root Protection Area (Radius = 1/2 stem diameter)
- Root Protection Area needing amendment due to site conditions, e.g. presence of existing road or building.
- Root Protection Area having been amended to account for site conditions
- T1 = Tree No 1 G2 = Group No 2 H3 = Hedge No 3

- Tree to be removed to facilitate the proposal
- Tree to be removed due to its low quality
- Proposed pruning

MN = Measured North
 Canopy spreads are sometimes measured to an approximate N. Often more accurate, especially where rows of trees are not aligned N-S or E-W.

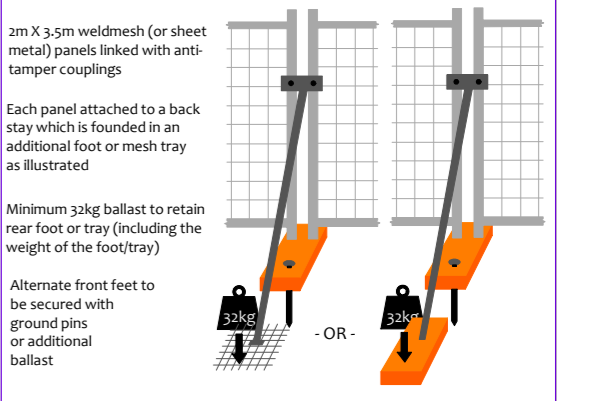


Tree Protection Plan

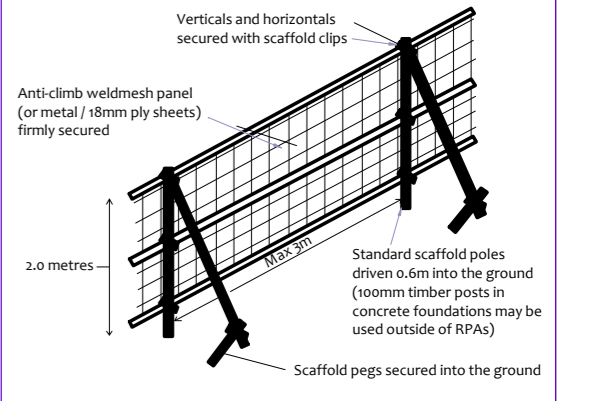
Tree Protection Barriers:

	Fixed protective barrier: The 'In-Ground System' or 'Backstay System'. To remain in place for all construction activity.		Construction Exclusion Zone Stem protected to a height of 2.5m with thick cloth & wire Tree Protection Basing 1.2 x 1.2 x 2.4m high 25mm plywood
	Moveable protective barrier: The 'Backstay System'. To remain in place except when approved works are being undertaken in the Restricted Zone.		Orange Barrier Mesh Fencing: 1.8m, on steel fencing posts. To remain in place when works are being undertaken in this area.

The 'Back Stay System'



The 'In-Ground' System



Construction Exclusion Zone

Within this area the following restrictions shall apply:

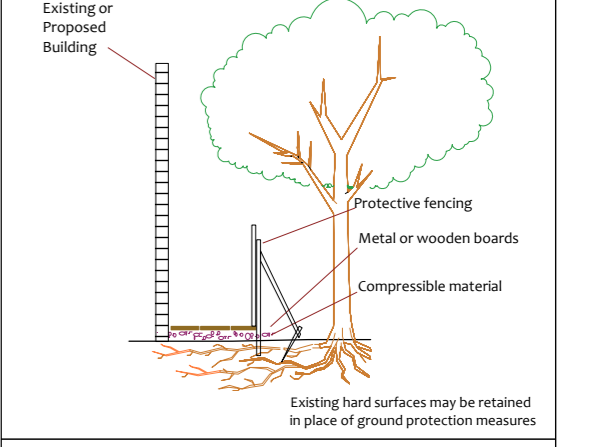
- No excavation or land grading whatsoever.
- No storage of materials, rubble, soil or spoil.
- No trees within the exclusion zone or within 5m of any tree canopy.
- No site cabins or other temporary structures.
- No discharge of polluted water, cement or chemicals of any kind.
- No use of any machinery, or passage or parking of vehicles.
- No tree works without council consent.

Restricted Activity Zones

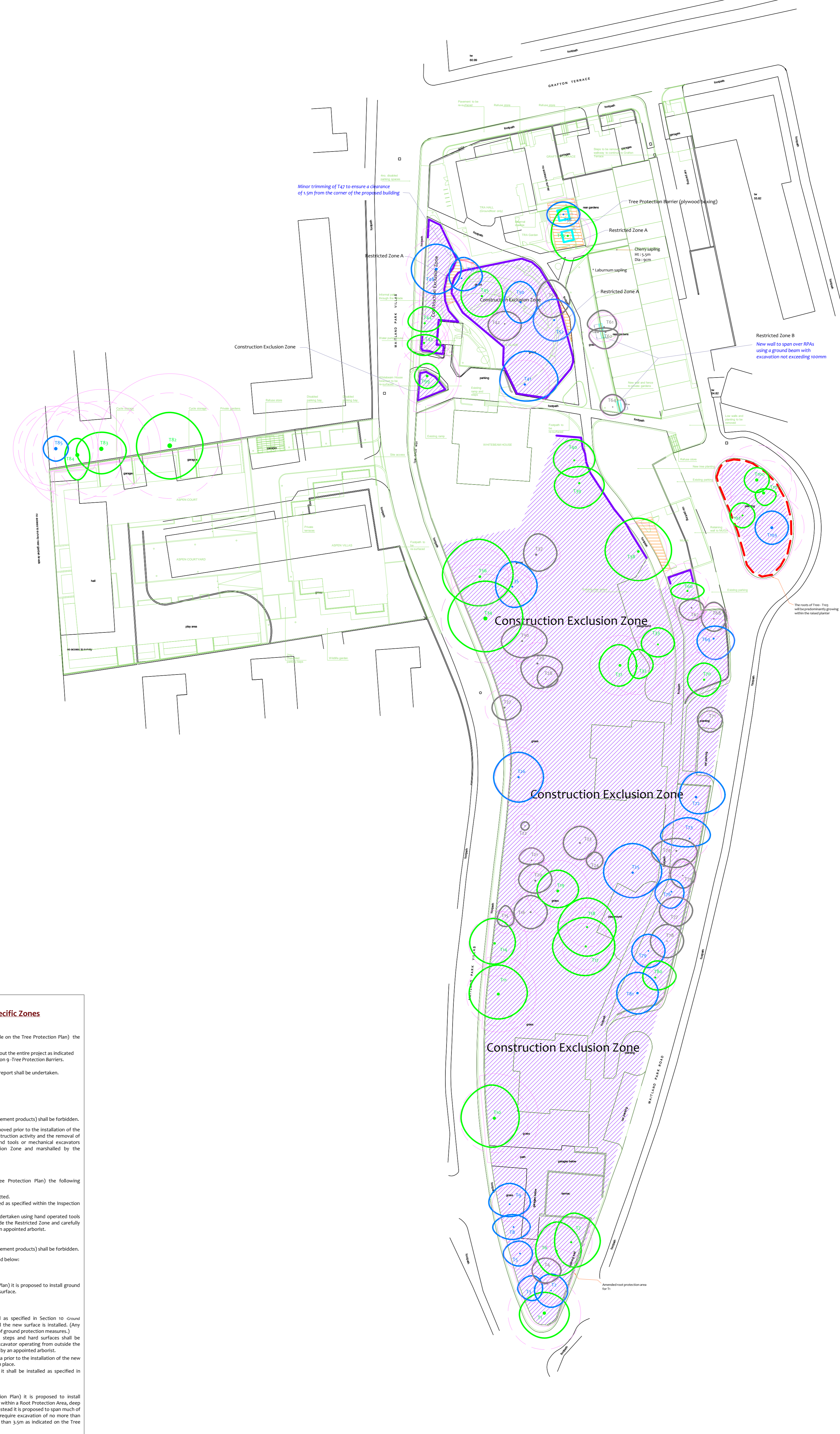
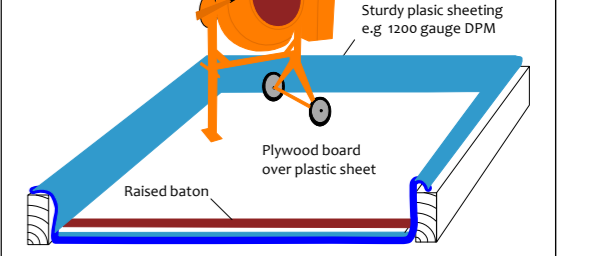
Restrictions are detailed within the accompanying Method Statement

	Restricted Zone A		Restricted Zone B
	Restricted Zone C		Restricted Zone D
	Restricted Zone E		Restricted Zone F

Ground Protection where specified in Restricted Zones



Dedicated Mixing and Cleaning Area



Section B: Restrictions on Activities – Specific Zones

- 6.7. Construction Exclusion Zones**
- 6.7.1. Within Construction Exclusion Zones (shaded purple on the Tree Protection Plan) the following restrictions shall apply:
- Fencing shall be erected and maintained throughout the entire project as indicated on the Tree Protection Plan and specified in Section 9 - Tree Protection Barriers.
 - No construction activity whatsoever shall occur.
 - No tree works, other than those specified in this report shall be undertaken.
 - No alterations of ground levels or conditions.
 - No chemicals or cement washings permitted.
 - No excavation whatsoever.
 - No temporary structures.
 - No spoil shall be stored.
 - No fires shall be permitted.
 - All hazardous materials (including non-essential cement products) shall be forbidden.
- 6.7.2. Any hard surfaces that require removal shall be removed prior to the installation of the protective fencing or following all other major construction activity and the removal of the fencing. Surfaces shall be removed using hand tools or mechanical excavators operating from outside the Construction Exclusion Zone and marshalled by the appointed arborist.
- 6.8. All Restricted Activity Zones**
- 6.8.1. Within all of these zones (indicated on the Tree Protection Plan) the following restrictions apply:
- Only essential and specified works shall be permitted.
 - Operations within these zones shall be supervised as specified within the Inspection Schedule in Section 7.
 - All excavation and lifting of surfaces shall be undertaken using hand operated tools or a mechanical excavator operating from outside the Restricted Zone and carefully marshalled by the local authority tree officer or an appointed arborist.
 - No materials or spoil shall be stored.
 - No fires shall be permitted.
 - All hazardous materials (including non-essential cement products) shall be forbidden.
- 6.8.2. Further restrictions specific to each zone are specified below:
- 6.9. Restricted Activity Zone A**
- 6.9.1. Within this zone (indicated on the Tree Protection Plan) it is proposed to install ground protection measures and possibly a new pedestrian surface.
- 6.9.2. The following restrictions shall apply:
- No other building works shall be permitted.
 - Ground protection measures shall be installed as specified in Section 10 - Ground Protection Measures, and shall remain in place until the new surface is installed. (Any existing hard surfacing may be retained in place of ground protection measures.)
 - Removal of existing structures such as walls, steps and hard surfaces shall be undertaken using hand tools or a mechanical excavator operating from outside the Restricted Activity Zone and carefully marshalled by an appointed arborist.
 - No vehicles or machinery shall pass over this area prior to the installation of the new surface unless ground protection measures are in place.
 - Where a new pedestrian surface is proposed, it shall be installed as specified in Section 6.2.
- 6.10. Restricted Activity Zone B**
- 6.10.1. Within this zone (indicated on the Tree Protection Plan) it is proposed to install foundations for a wall. Because the foundations are within a Root Protection Area, deep concrete strip foundations shall not be permitted. Instead it is proposed to span much of the Root Protection Area using a beam which will require excavation of no more than 100mm. The beam shall span a distance of no less than 3.5m as indicated on the Tree Protection Plan.

Drawing No:	CCL 09056 / TPP Rev: 1
Title:	Tree Protection Plan (Existing Layout with Proposals Overlaid)
Site:	Maitland Park
Scale:	1:500
Paper Size:	A1



	Category A tree	Trees of high quality with an estimated life expectancy of 60+ years. Usually large trees with significant presence or smaller trees with excellent form. Retention of these trees is highly desirable.
	Category B tree	Trees of moderate quality with a life expectancy of 20+ years. Usually maturing trees, or younger trees with good form. Retention of these trees is desirable though less than Category A trees.
	Category C tree	Unremarkable trees of low quality and merit. Individual specimens are not considered to be a material planning consideration.
	Category U tree	Trees unsuitable for retention due to their very poor condition.

Tree Protection Plan

	BS 5837 Root Protection Area (radius = 12xstem diameter)
	Root Protection Area needing amendment due to site conditions, e.g. presence of existing road or building.
	Root Protection Area having been amended to account for site conditions
T1 = Tree No 1	G2 = Group No 2 H3 = Hedge No 3

MN = Measured North
Canopy spreads are sometimes measured to an approximate N defined by site features. Often more accurate, especially where rows of trees are not aligned N-S or E-W.