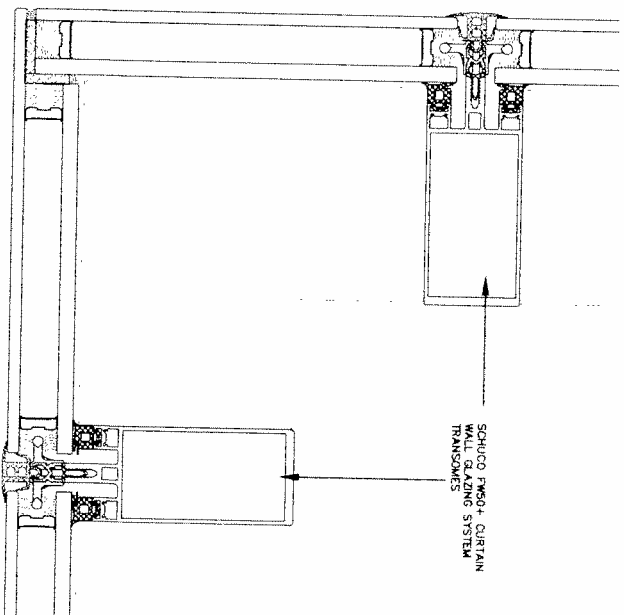
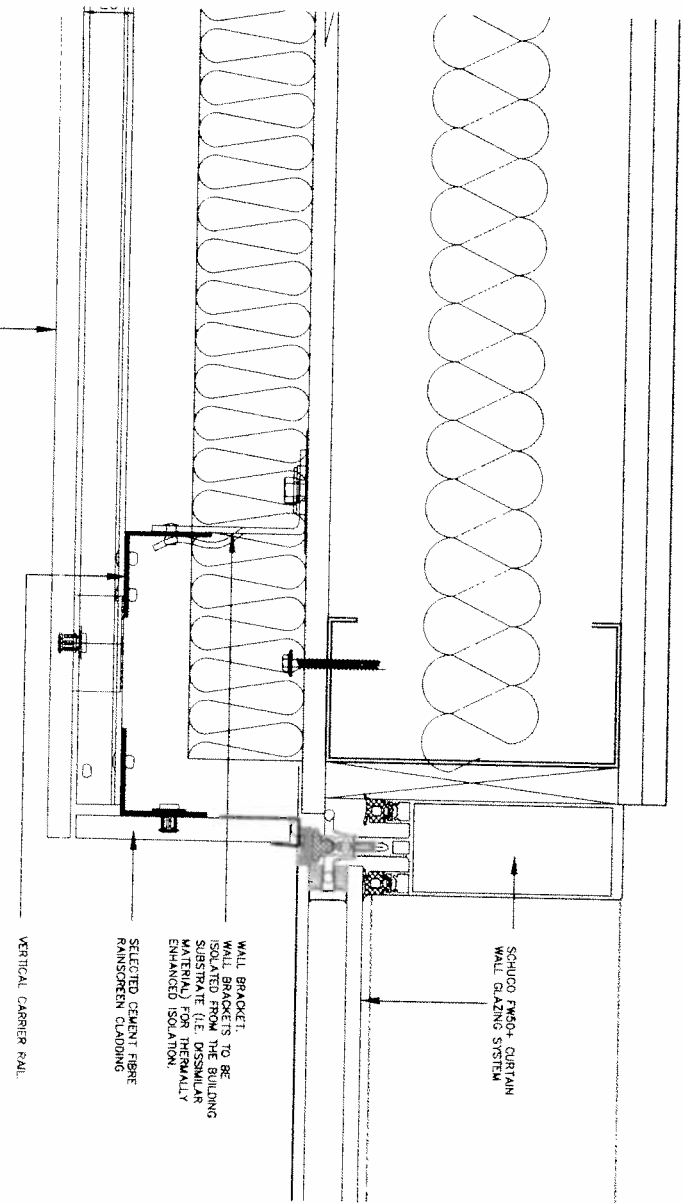


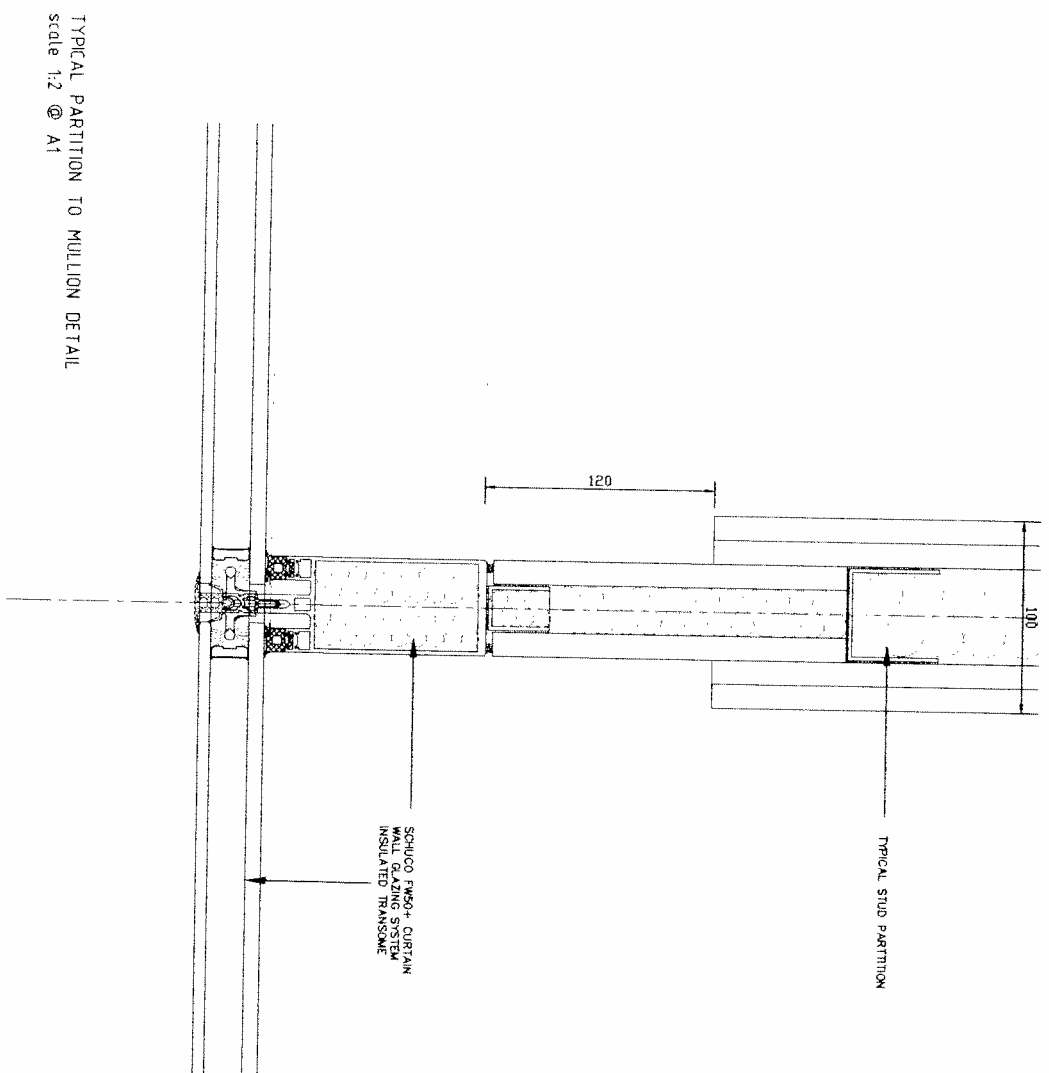
TYPICAL SCHUCO FW50+ DETAILS.



TYPICAL CORNER DETAIL
scale 1:2 @ A1



TYPICAL ABUTMENT DETAIL
scale 1:2 @ A1



TYPICAL PARTITION TO MULLION DETAIL
scale 1:2 @ A1

NOTES

Do not scale - use given dimensions only.
All setting out to be verified on site and any discrepancies notified to the architect.
Drawing to be read in conjunction with GA drawings and specification.

| No. | Date | By | Description |
|-----|------|----|-------------|
| | | | |

TENDER

STATUS **PROPOSED**

B L A ARCHITECTS

ARCHITECTURE • INTERIOR DESIGN • PROJECT MANAGEMENT
SECOND FLOOR, 11-13 BAKER STREET, LONDON, W1U 6QQ
TEL: 020 7488 9393 info@bla-architects.com www.bla-architects.com

CLIENT **RIVERCREST**

PROJECT **WORLDWIDE HOUSE
116-134 BAYHAM STREET
CAMDEN**

DRAWING **TYPICAL EXTERNAL DETAILS -
SCHUCO FW50+ CLADDING SYSTEM**

| DRWING | DATE | BY | SCALE |
|----------|---------|----|-------|
| 1:2 @ A1 | MAR '14 | RG | |
| 1:4 @ A3 | | | |

| JOB NO. | DRAWING NO. | REV. |
|---------|-------------|------|
| 312 | 303 | |