

Footprint, window positions and heights of building have changed, refer to 1423\_DWG\_PlotA\_290-293

Copyright Hawkins Brown Architects LLP

No implied license exists. This drawing should not be used to calculate areas for the purposes of valuation. Do not scale this drawing. All dimensions to be checked on site by the contractor and such dimensions to be their responsibility. All work must comply with relevant British Standards and Building Regulations requirements. Drawing errors and omissions to be reported to the architect.

Revisions

NOTE:  
Below ground works shown indicatively only. Refer to landscape architects and civil/structural engineers packages for details.

Date	Rev	Notes
02.09.14	A	All information shown is in line with Stage E Tender drawings. Revision clouds indicate changes from previously approved planning drawings. Application no. <b>2013/8088/P</b>

Hawkins\Brown

159 St John Street  
London  
EC1V 4QJ  
020 7336 8030t

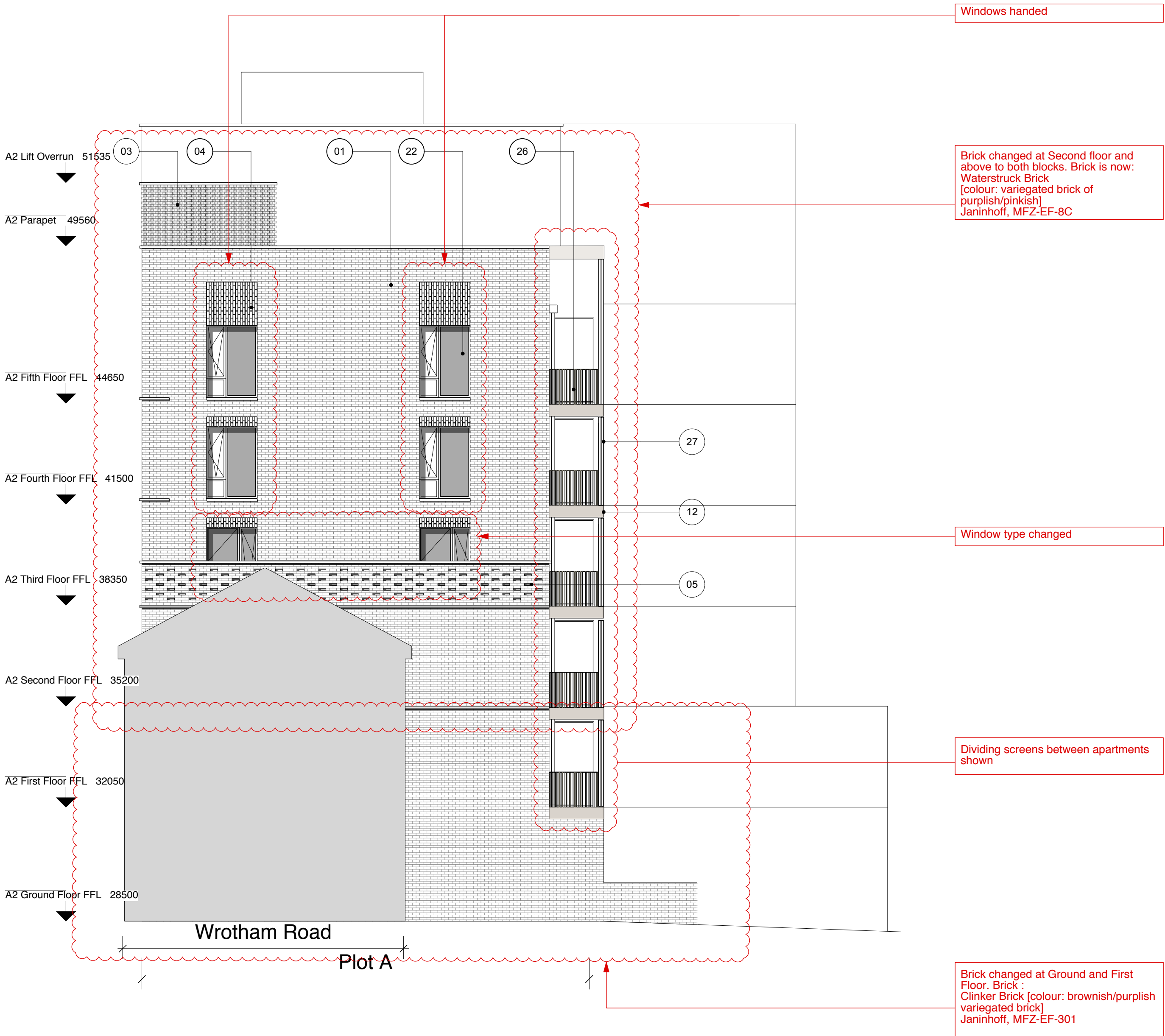
mail@hawkinsbrown.com  
www.hawkinsbrown.com

Project  
Agar Grove  
Estate Regeneration

Drawing  
Plot A  
Side Elevation W3

Scale @A1 (@A3)	Date
1:100 (1:200)	September 2014
Drawn by	Checked by
JW	EC
Job Number	Status
HB1423	Planning

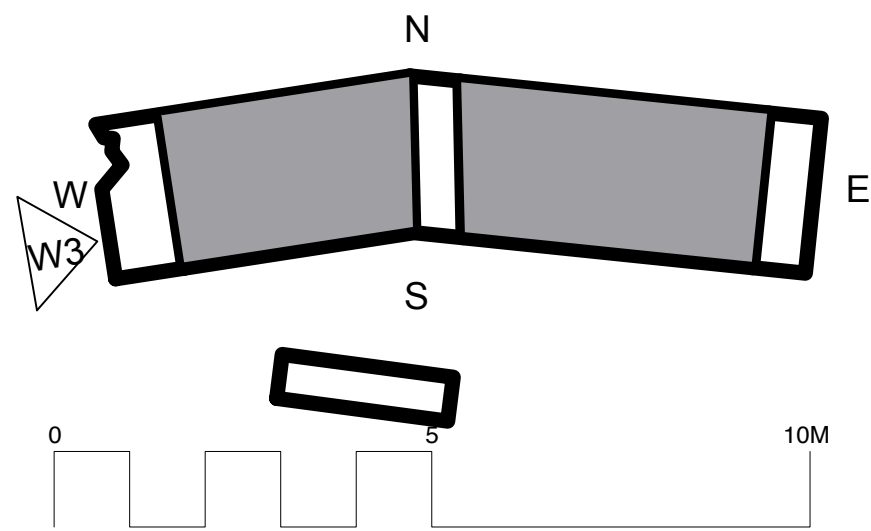
Drawing No. & Revision  
1423\_DWG\_PlotA\_00\_254\_A

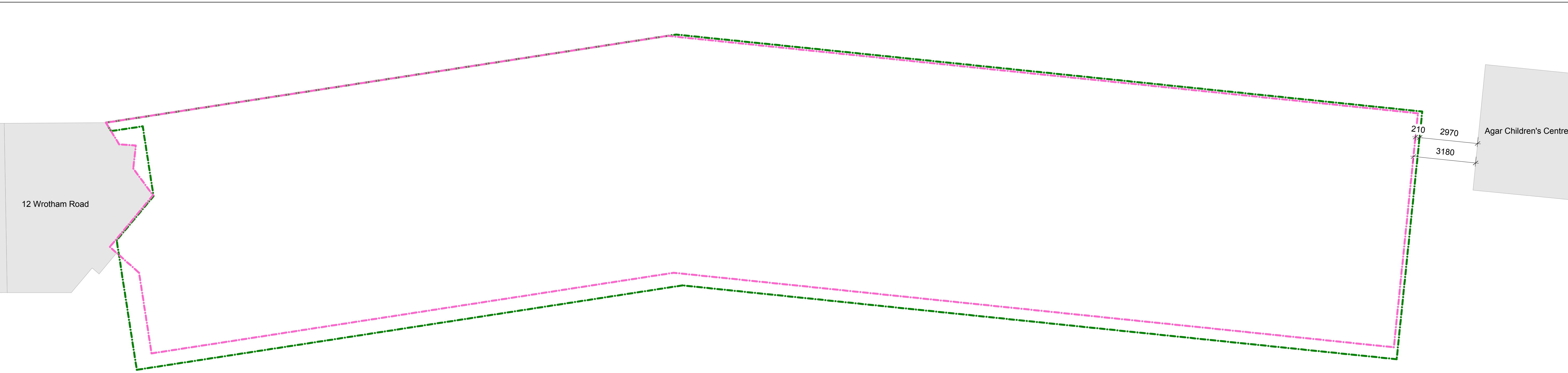


01 Side Elevation West (W3)  
Scale 1:100 @ A1

Plot A Material Specification

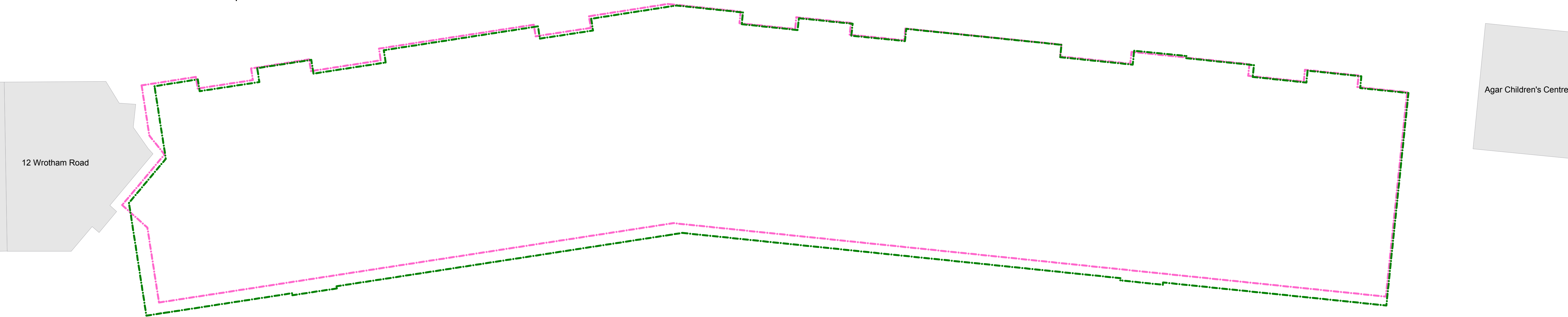
- |  |  |  |   |
|--|--|--|---|
| ① Brick type used above first floor - textured waterstruck brick. Bond - random. Colour - purplish/pinkish variegated brick with a degree of patterning within each brick. Mortar - flush pointed, colour to be determined after review of sample boards | ⑦ Cantilevered reconstituted stone canopy with recessed lighting to communal entrances, polished finish. Colour - light grey   | ⑮ High quality lighting to communal entrance areas   | ⑳ Clear glazed communal entrance door, with full height glazed window above. Door set to be PAS 24 Approved. Colour - light bronze/gold     |
| ② Ground and first floor horizontal ribbed texture brickwork   | ⑧ Cantilevered reconstituted stone canopy with recessed lighting to maisonette entrances, polished finish. Colour - light grey | ⑯ Slip resistant decorative tile, pattern A to communal entrance floor and walls. Tile pattern extends to extent of overhead canopy externally | ㉑ Clear glazed communal entrance door to garden, with clear glazed side panel. Door set to be PAS 24 Approved. Colour - light bronze/gold   |
| ③ Stair cores and lift over runs/roof access elements expressed with sawtooth bond   | ⑨ Reconstituted stone balcony ledge, polished finish. Colour - light grey  | ⑰ <del>Suspended stainless steel soffit with mirrored finish to communal entrance lobby ceiling</del> (Omitted)                                | ㉒ Clear glazed window with solid side opening to match frame. Frame and opening side panel - anodised aluminium. Colour - light bronze/gold |
| ④ Vertical stretcher bond to window heads  | ⑩ Reconstituted stone window base, forming recessed shelf, polished finish. Colour - light grey                                | ⑱ Slip resistant decorative tile, pattern B to maisonette entrance threshold. Tile pattern extends to extent of overhead canopy externally     |   |
| ⑤ Lower roof terrace walls - pattern formed from recessed stretchers   | ⑪ Reconstituted stone banding, polished finish. Colour - light grey  | ㉓ Refuse door - perforated anodised aluminium. Colour - light bronze/gold  |   |
| ⑥ Brick type used at ground and first floor - clinker brick. A brownish/purplish variegated brick with a degree of pigmentation within each brick  | ⑫ Reconstituted stone banding to balcony, polished finish. Colour - light grey   | ㉔ Solid core private entrance door, with clear glazed side light. Door set to be PAS 24 Approved. Colour - TBC                                 |   |
|  | ⑬ <del>Concrete upstand to ground floor screens</del> (Omitted)  | ㉕ Clear glazed communal entrance door to garden, with clear glazed side panel. Door set to be PAS 24 Approved. Colour - light bronze/gold      |   |
|  | ⑭  | ㉖ Clear glazed window with solid side opening to match frame. Frame and opening side panel - anodised aluminium. Colour - light bronze/gold    |   |





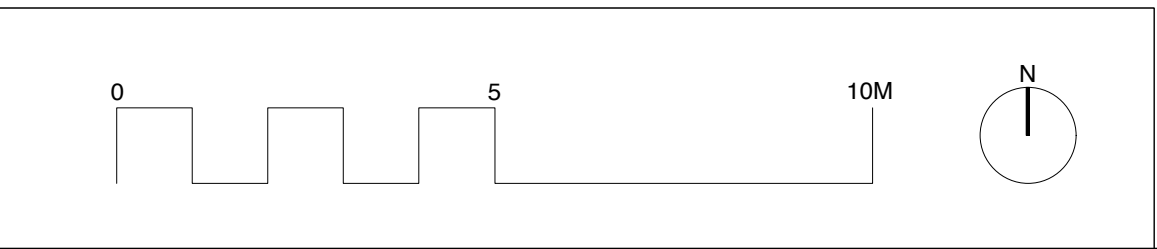
Plot A GEA

- Planning = 4622sqm
- Stage E = 4873sqm
- Difference = 251sqm



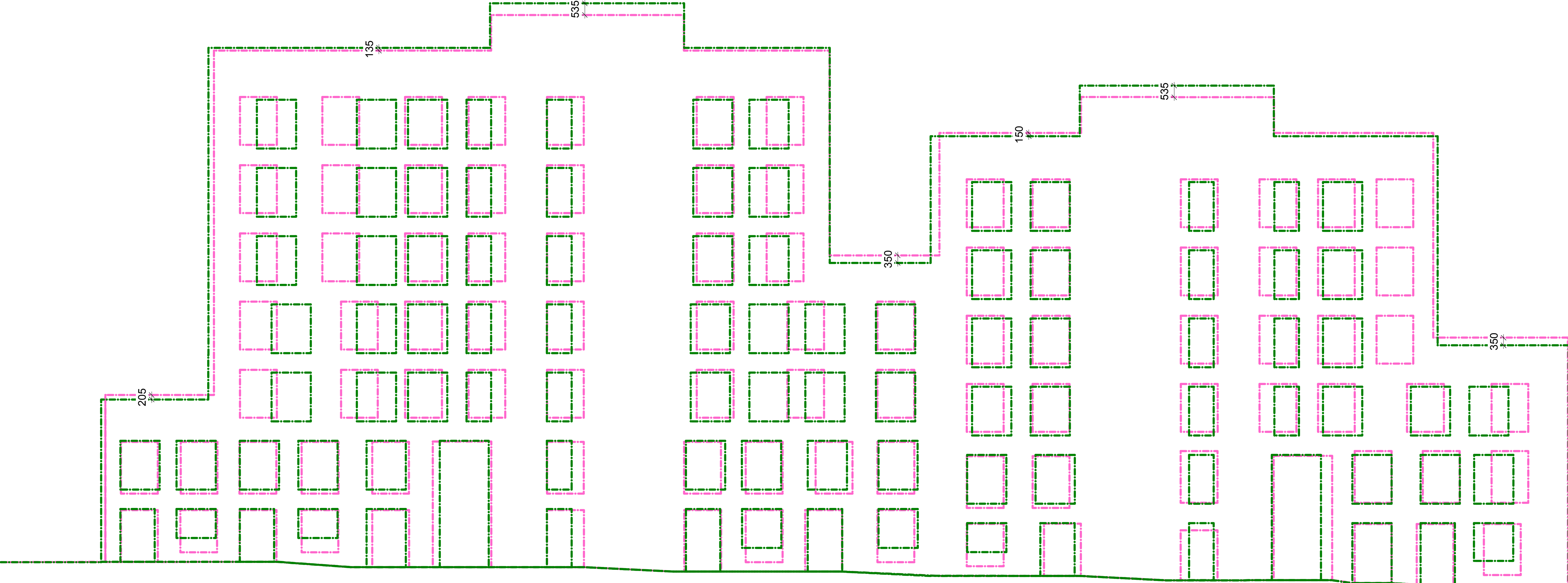
Plot A GIA

- Planning = 4210sqm
- Stage E = 4266sqm
- Difference = 56sqm



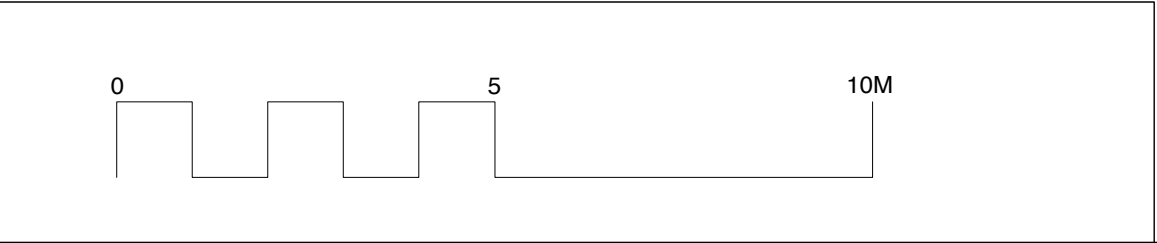
Revisions	Copyright Hawkins Brown Architects LLP  No implied license exists. This drawing should not be used to calculate areas for the purposes of valuation. Do not scale this drawing. All dimensions to be checked on site by the contractor and such dimensions to be their responsibility. All work must comply with relevant British Standards and Building Regulations requirements. Drawing errors and omissions to be reported to the architect.	Scale @A1 (@A3)	Date	Project	Hawkins\Brown  159 St John Street    mail@hawkinsbrown.com London    hawkinsbrown.com EC1V 4QJ    www. 020 7336 8030t    hawkinsbrown.com
		1:100 (1:200)	September 2014	Agar Grove Estate Regeneration	
		Drawn by	Checked by	Drawing Plot A Ground Floor Plan Planning and Stage E comparison	
		JW	EC		
		Job Number	Status		
		HB1423	Information		Drawing No. & Revision 1423_DWG_PlotA_290





Plot A – North Elevation

Planning  
Stage E



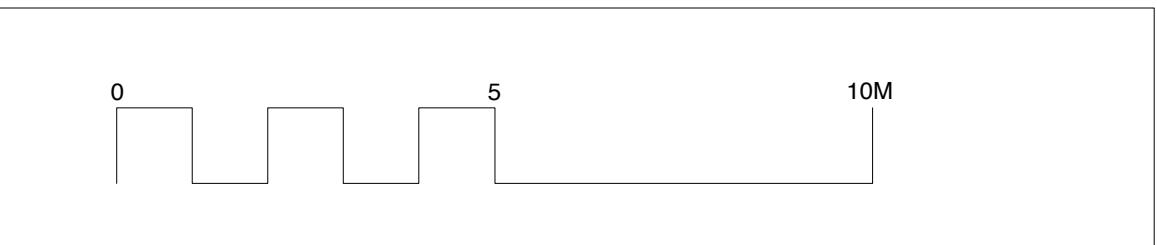
Revisions

<div>Copyright Hawkins Brown Architects LLP</div> <div>No implied license exists. This drawing should not be used to calculate areas for the purposes of valuation. Do not scale this drawing. All dimensions to be checked on site by the contractor and such dimensions to be their responsibility. All work must comply with relevant British Standards and Building Regulations requirements. Drawing errors and omissions to be reported to the architect.</div>	Scale @A1 (@A3)	Date	Project Agar Grove Estate Regeneration		<div>HawkinsBrown</div> <div>159 St John Street    mail@hawkinsbrown.com London    hawkinsbrown.com EC1V 4QJ    www.hawkinsbrown.com 020 7336 8030t</div>	
	1:100 (1:200)	September 2014				
	Drawn by	Checked by	Drawing Plot A North Elevation Planning and Stage E comparison	Drawing No. & Revision 1423_DWG_PlotA_291		
	JW	EC				
Job Number	Status					
HB1423	Information					



Plot A – South Elevation with screens removed for clarity

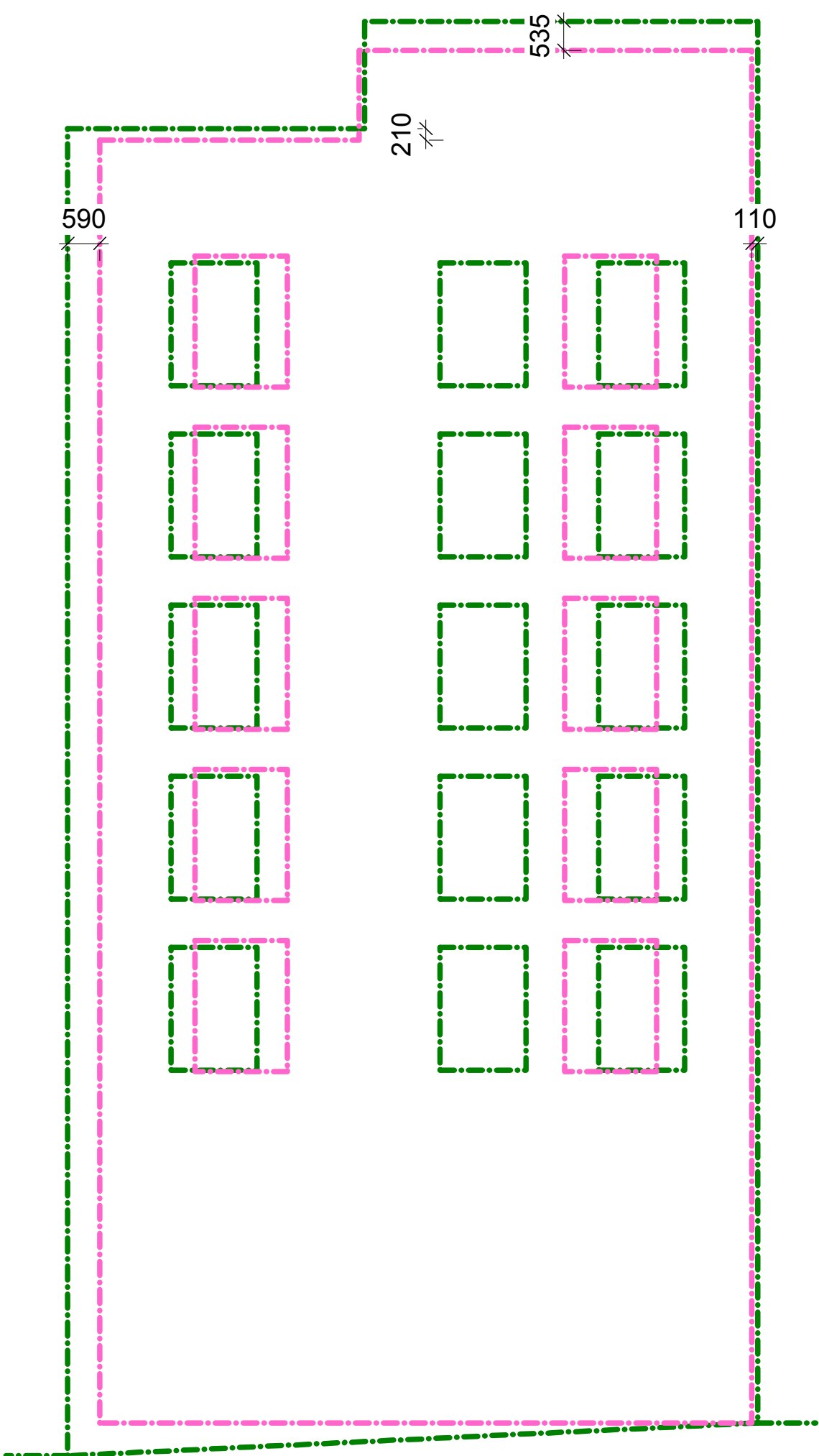
Planning  
Stage E



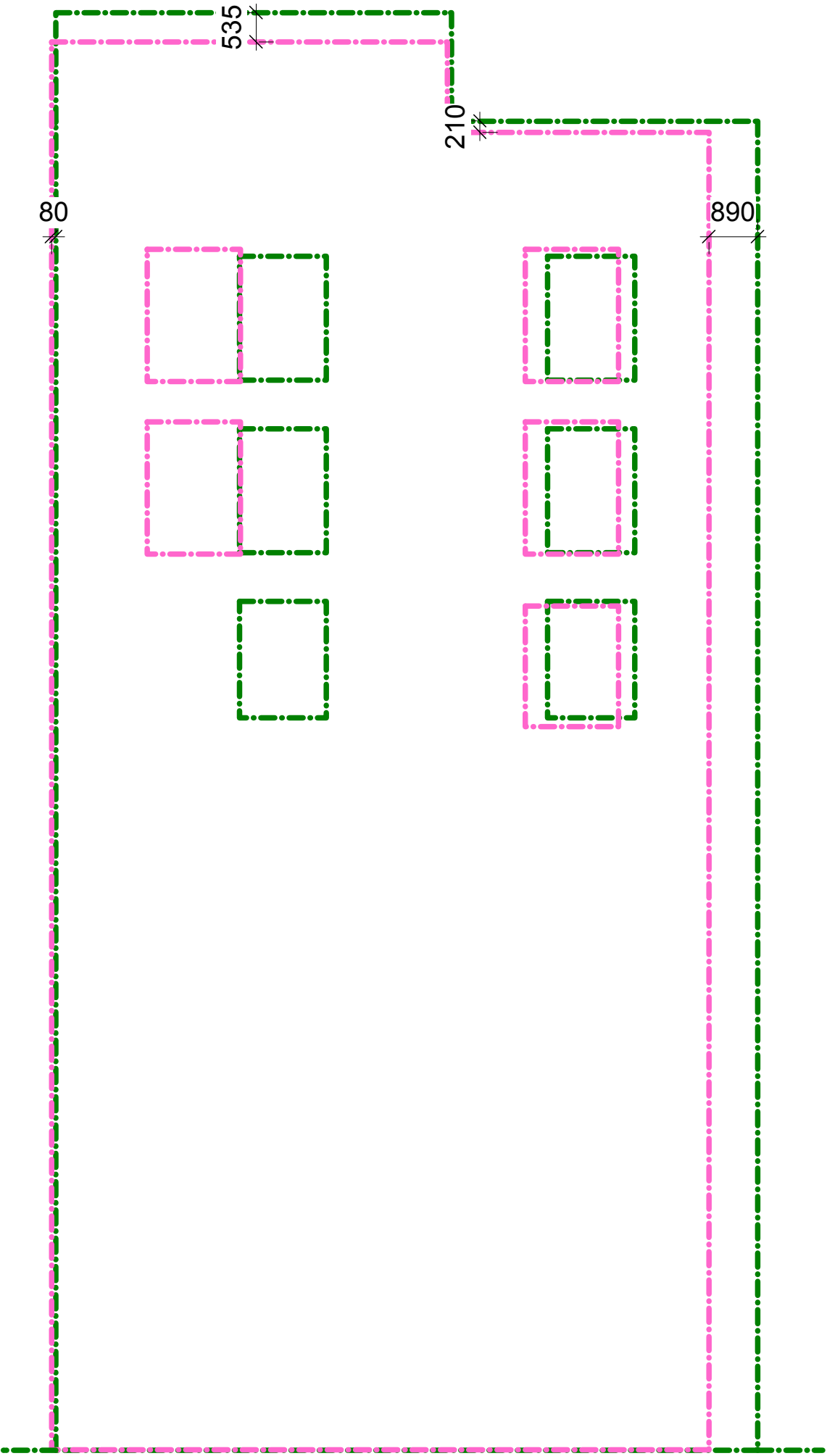
Revisions	

Copyright Hawkins Brown Architects LLP No implied license exists. This drawing should not be used to calculate areas for the purposes of valuation. Do not scale this drawing. All dimensions to be checked on site by the contractor and such dimensions to be their responsibility. All work must comply with relevant British Standards and Building Regulations requirements. Drawing errors and omissions to be reported to the architect.	Scale @A1 (@A3) 1:100 (1:200)	Date September 2014	Project Agar Grove Estate Regeneration	<b>Hawkins\Brown</b> 159 St John Street London EC1V 4QJ 020 7336 8030t mail@hawkinsbrown.com www.hawkinsbrown.com
	Drawn by JW	Checked by EC		
	Job Number HB1423	Status Information	Drawing Plot A South Elevation Planning and Stage E comparison	
Drawing No. & Revision				1423_DWG_PlotA_292

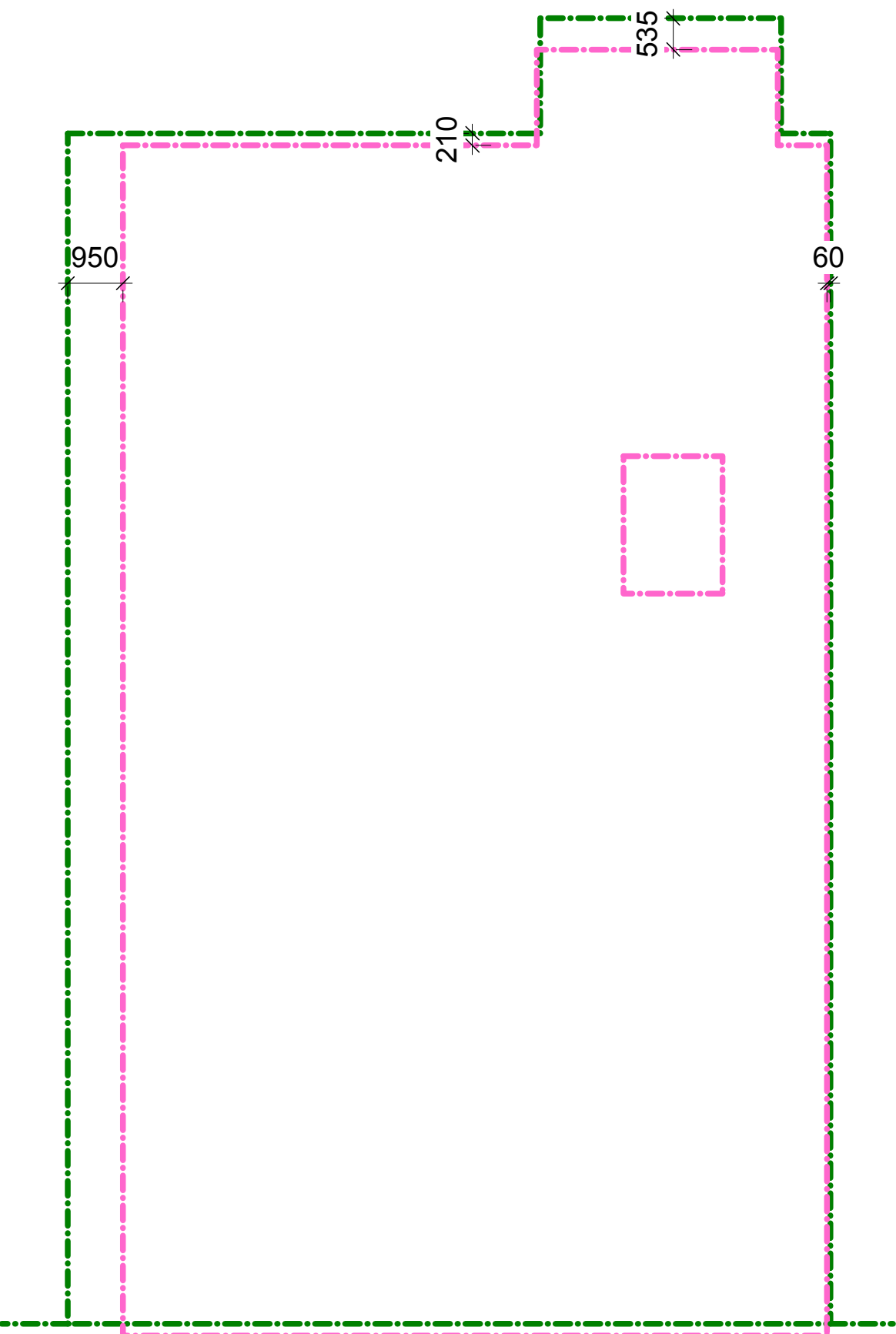




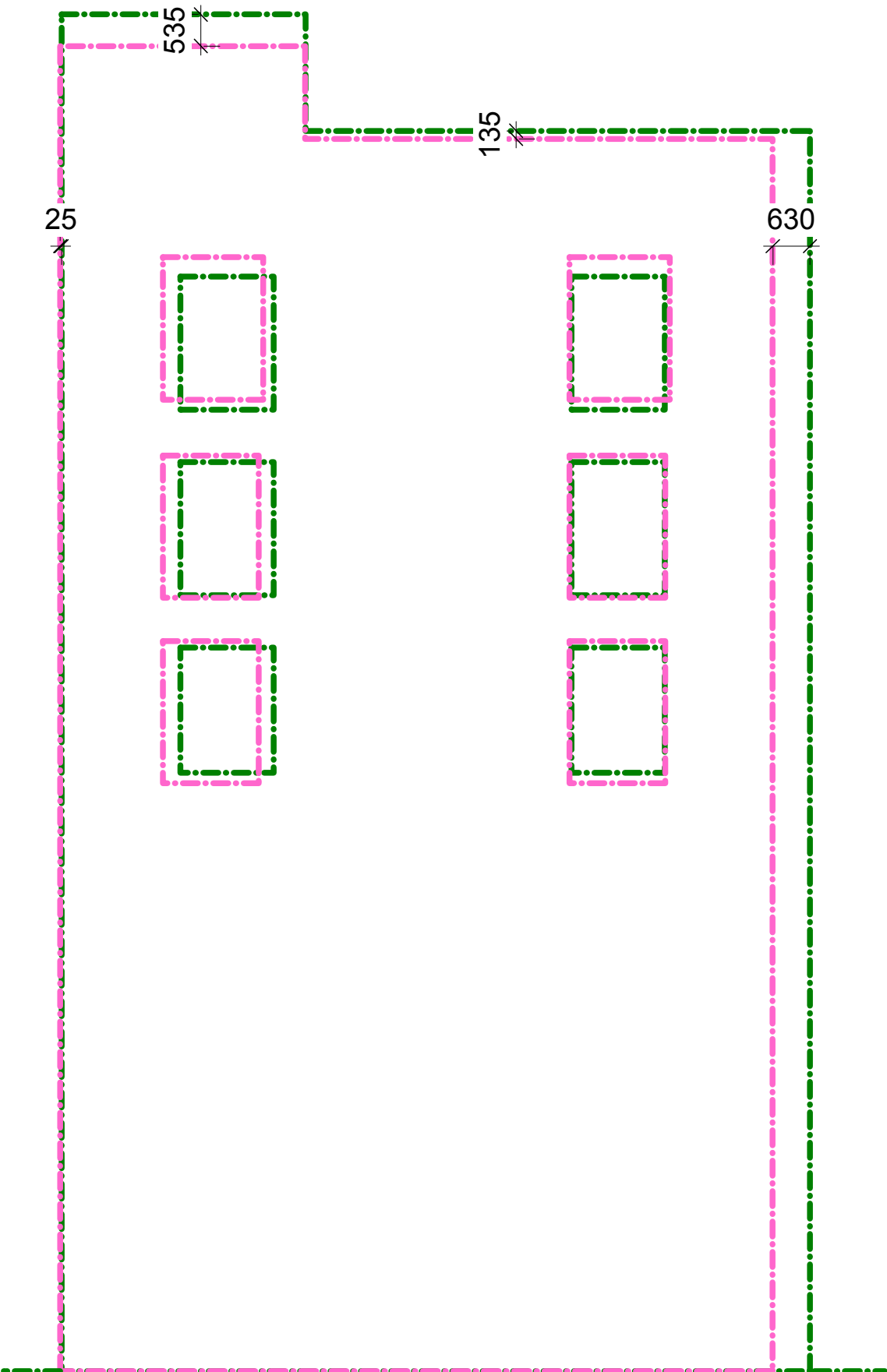
Plot A – East Elevation (E1)



Plot A – West Elevation (W1)

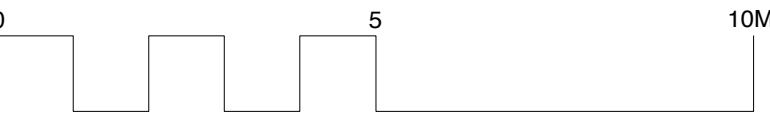


Plot A – East Elevation (E2)

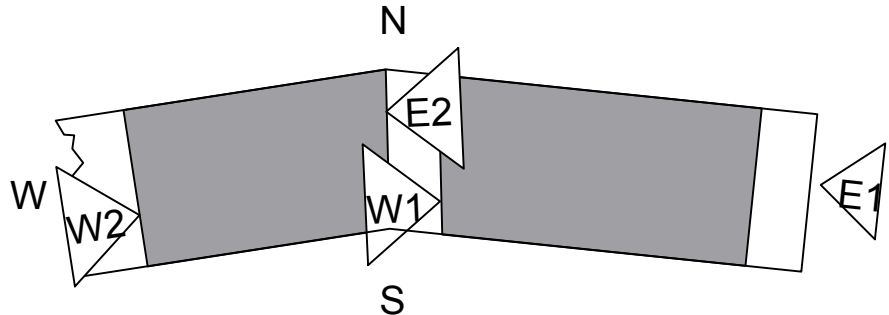


Plot A – West Elevation (W2)

Planning  
Stage E



Revisions



Copyright Hawkins Brown Architects LLP  
No implied license exists. This drawing should not be used to calculate areas for the purposes of valuation. Do not scale this drawing. All dimensions to be checked on site by the contractor and such dimensions to be their responsibility. All work must comply with relevant British Standards and Building Regulations requirements. Drawing errors and omissions to be reported to the architect.

Scale @A1 (@A3) 1:100 (1:200)	Date September 2014
Drawn by JW	Checked by EC
Job Number HB1423	Status Information

Project Agar Grove Estate Regeneration	Drawing Plot A Side Elevation Planning and Stage E comparison
--	--

<b>Hawkins\Brown</b> 159 St John Street London EC1V 4QJ 020 7336 8030t mail@hawkinsbrown.com www.hawkinsbrown.com	Drawing No. & Revision 1423_DWG_PlotA_293
---	--