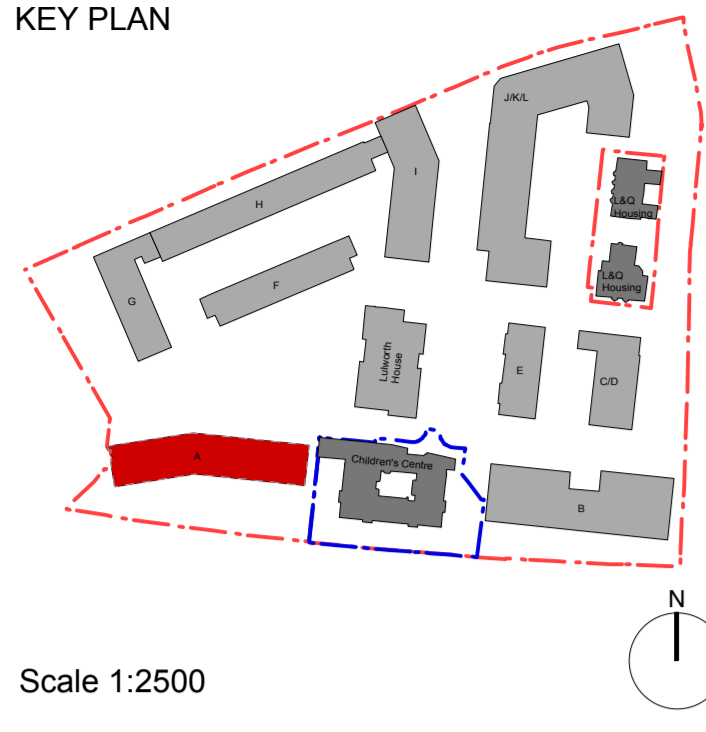


KEY PLAN

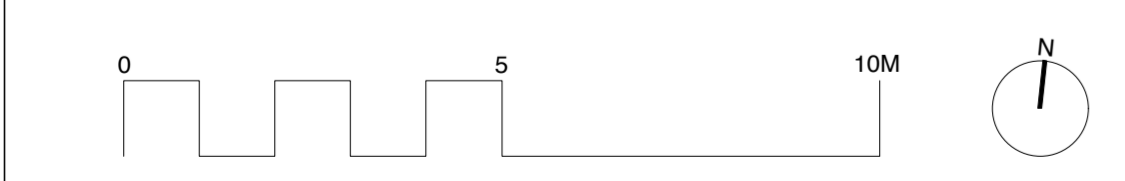
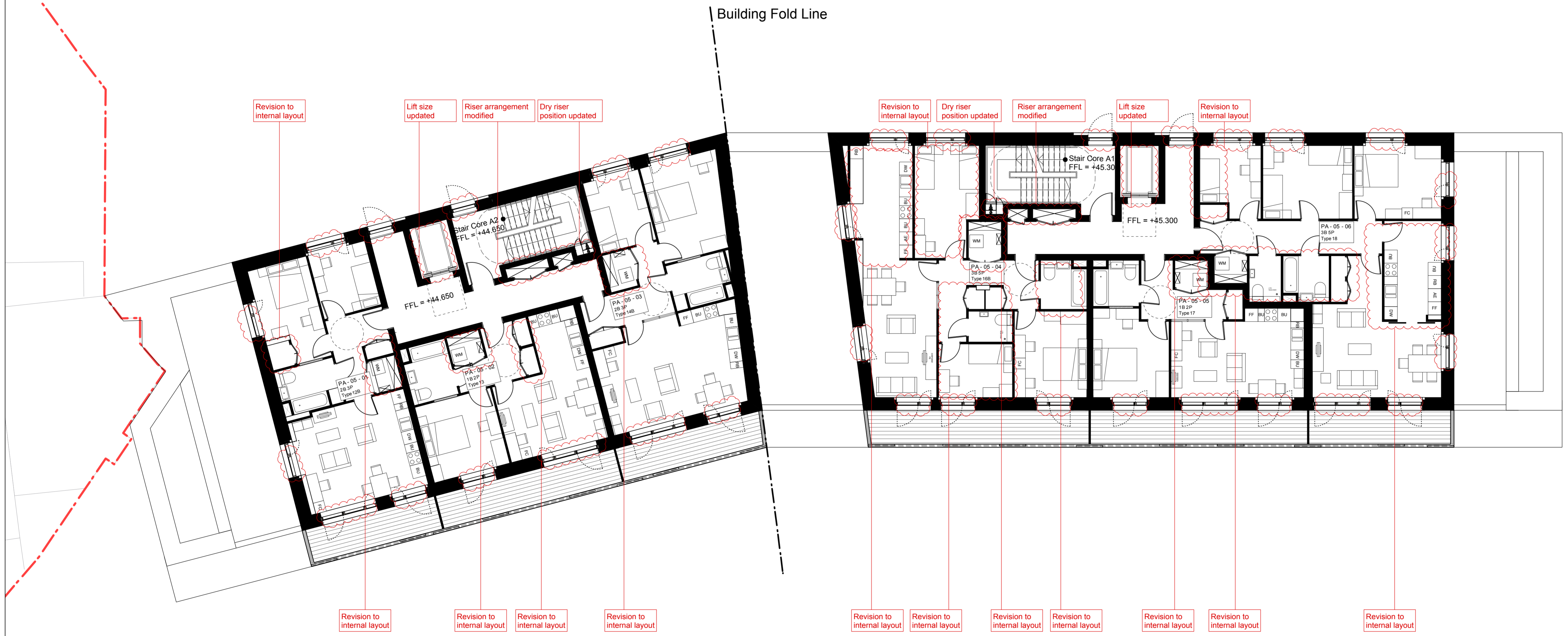


Scale 1:2500

Footprint and heights of building have changed, refer to 1423\_DWG\_PlotA\_290-293

Thickness and dimensions of all external walls updated in line with Stage E details and brick dimensions.

All windows and doors changed in size to brick dimensions.



Date	Rev	Note
02.09.14	A	All information shown is in line with Stage E Tender drawings. Revision clouds indicate changes from previously approved planning drawings. Application no. 2013/8088/P

NOTE:  
Internal furniture is indicative only

KEY  
Site Boundary  
Agar Children's Centre Boundary

Copyright Hawkins Brown Architects LLP

No implied license exists. This drawing should not be used to calculate areas for the purposes of valuation. Do not scale this drawing. All dimensions to be checked on site by the contractor and such dimensions to be their responsibility. All work must comply with relevant British Standards and Building Regulations requirements. Drawing errors and omissions to be reported to the architect.

Scale @A1 (@A3) 1:100 (1:200)	Date September 2014
Drawn by EC	Checked by SR
Job Number HB1423	Status Planning

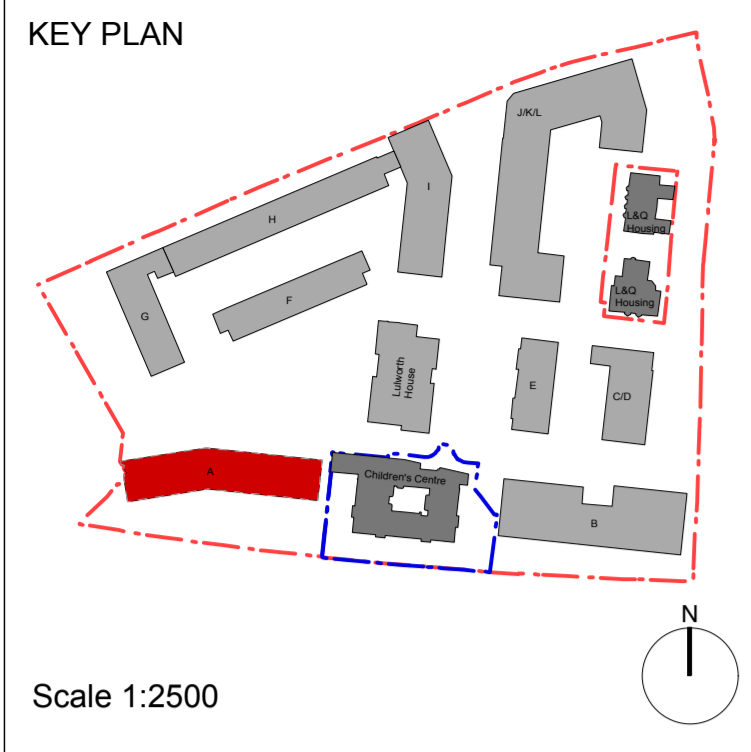
Project Agar Grove Estate Regeneration
Drawing Plot A Fifth Floor GA Plan

**HawkinsBrown**

159 St John Street London EC1V 4QJ 020 7336 8030t

mail@hawkinsbrown.com www.hawkinsbrown.com

Drawing No. & Revision  
1423\_DWG\_PlotA\_00\_205\_A

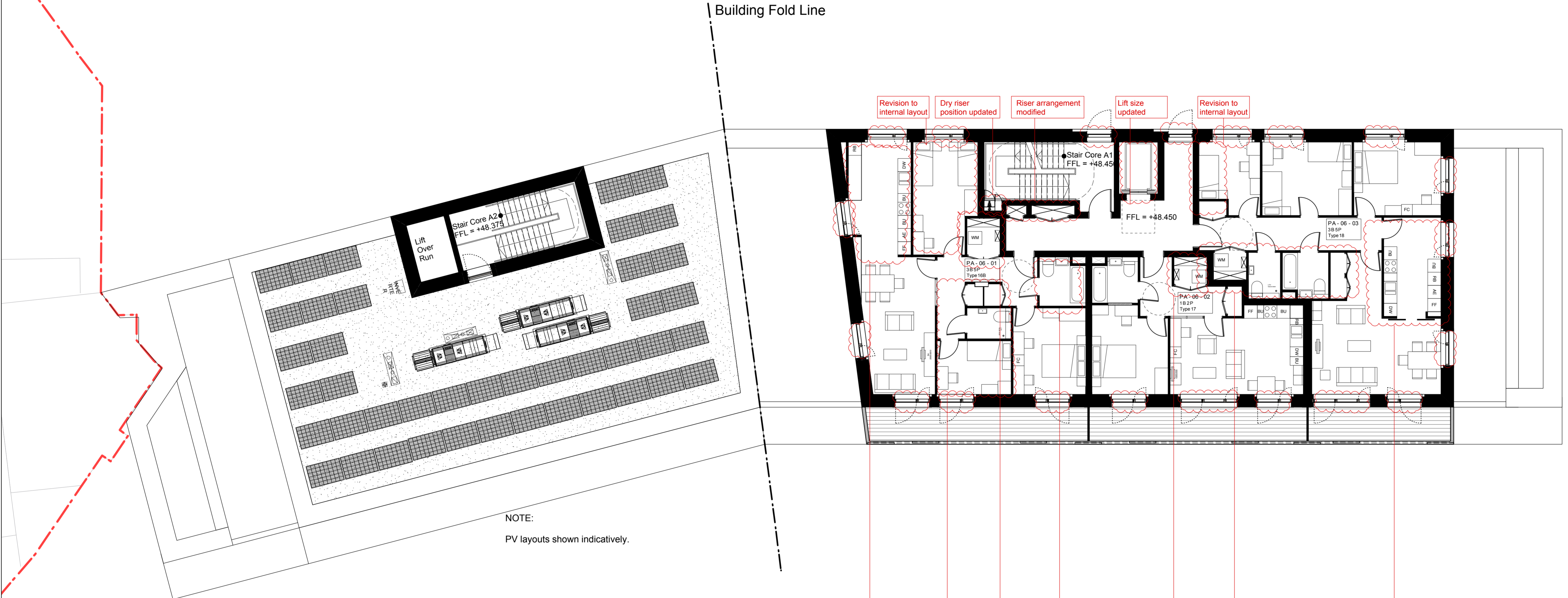


Footprint and heights of building have changed, refer to 1423\_DWG\_PlotA\_290-293

Thickness and dimensions of all external walls updated in line with Stage E details and brick dimensions.

All windows and doors changed in size to brick dimensions.

Plant equipment shown updated in line with other consultants tender information



Revision to internal layout

Dry riser position updated

Riser arrangement modified

Lift size updated

Revision to internal layout

Revision to internal layout

Revision to internal layout

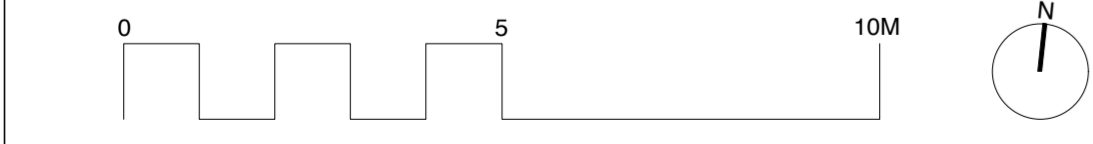
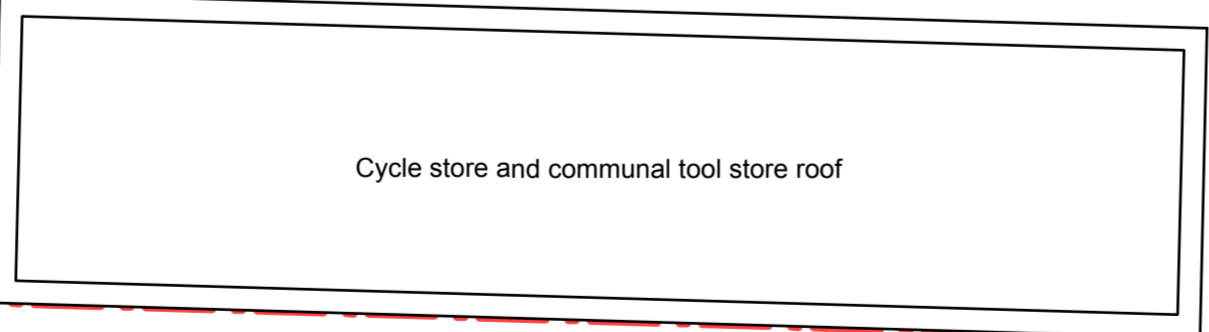
Revision to internal layout

Revision to internal layout

Revision to internal layout

Revision to internal layout

NOTE:  
PV layouts shown indicatively.



Revisions

Date	Rev	Note
02.09.14	A	All information shown is in line with Stage E Tender drawings. Revision clouds indicate changes from previously approved planning drawings. Application no. <b>2013/8088/P</b>

NOTE:  
Internal furniture is indicative only

KEY

	Site Boundary
	Agar Children's Centre Boundary
	Brown Roof

Copyright Hawkins Brown Architects LLP

No implied license exists. This drawing should not be used to calculate areas for the purposes of valuation. Do not scale this drawing. All dimensions to be checked on site by the contractor and such dimensions to be their responsibility. All work must comply with relevant British Standards and Building Regulations requirements. Drawing errors and omissions to be reported to the architect.

Scale @A1 (@A3)	Date
1:100 (1:200)	September 2014
Drawn by	Checked by
EC	SR
Job Number	Status
HB1423	Planning

Project
Agar Grove Estate Regeneration
Drawing
Plot A Sixth Floor GA Plan

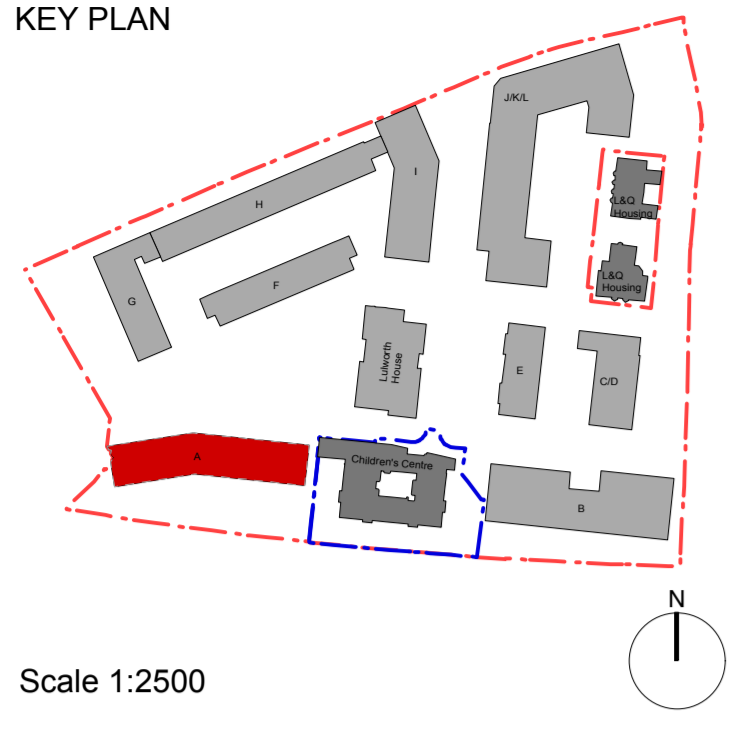
**Hawkins\Brown**

159 St John Street  
London  
EC1V 4QJ  
020 7336 8030t

mail@hawkinsbrown.com  
www.hawkinsbrown.com

Drawing No. & Revision  
1423\_DWG\_PlotA\_00\_206\_A

KEY PLAN

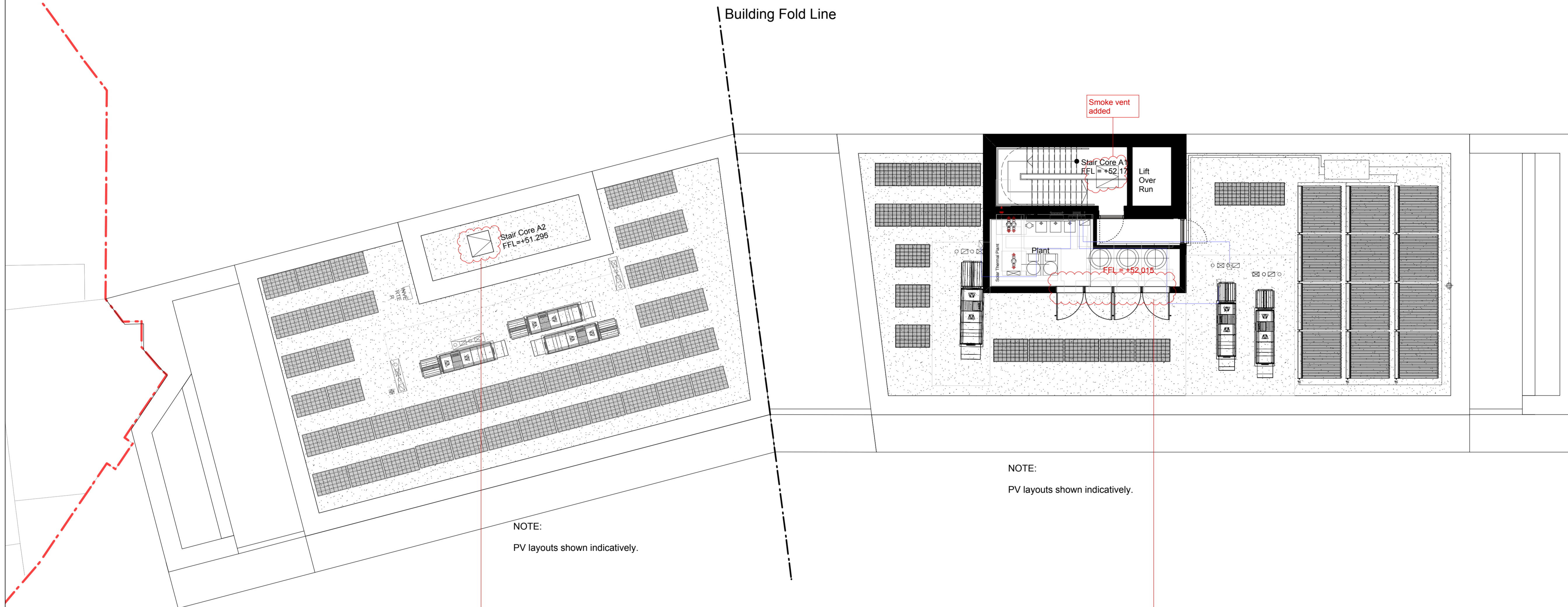


Scale 1:2500

Footprint and heights of building have changed, refer to 1423\_DWG\_PlotA\_290-293

Thickness and dimensions of all external walls updated in line with Stage E details and brick dimensions.

Plant equipment shown updated in line with other consultants tender information

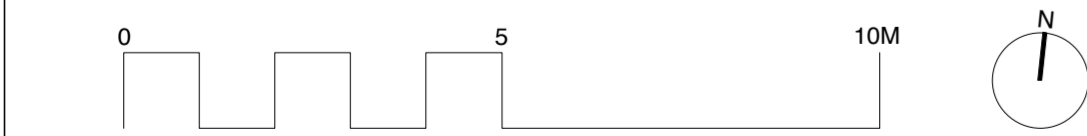
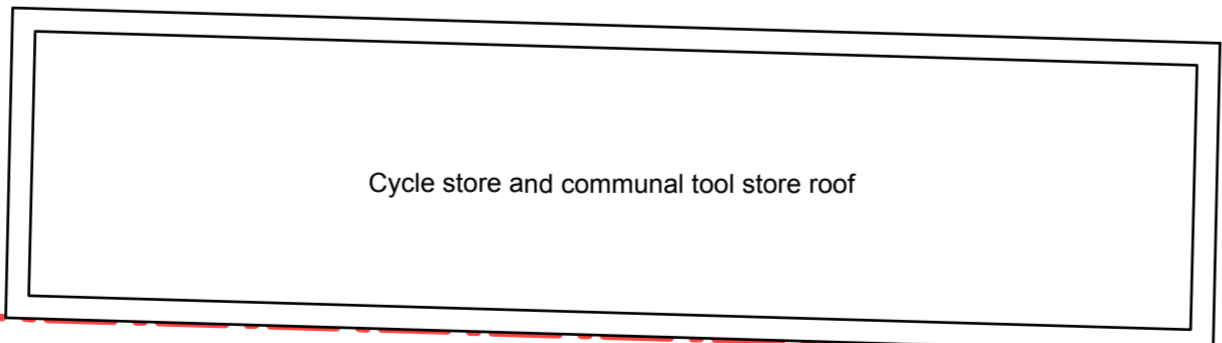


NOTE:  
PV layouts shown indicatively.

NOTE:  
PV layouts shown indicatively.

Smoke vent added

Doors to plant room added



Date	Rev	Note
02.09.14	A	All information shown is in line with Stage E Tender drawings. Revision clouds indicate changes from previously approved planning drawings. Application no. <b>2013/8088/P</b>

KEY	
	Site Boundary
	Agar Children's Centre Boundary
	Brown Roof

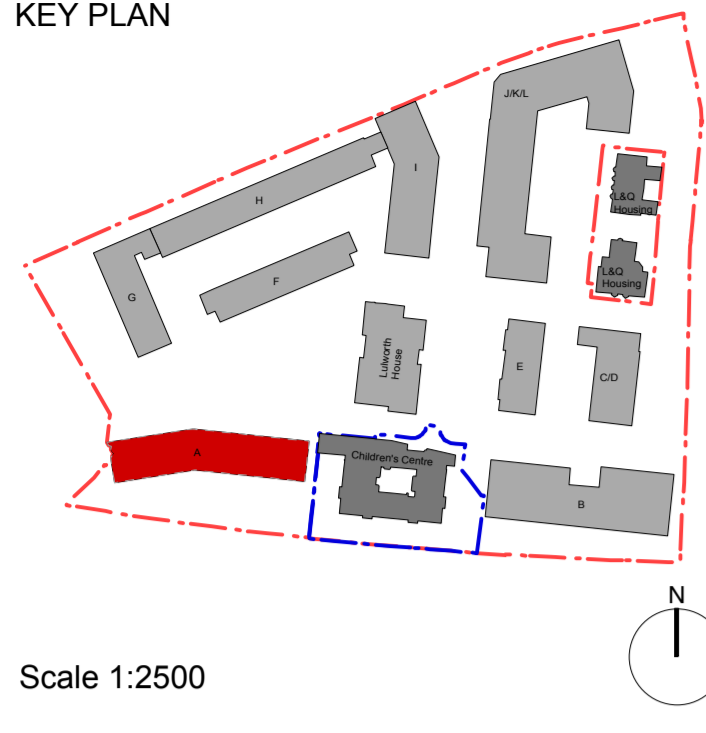
Copyright Hawkins Brown Architects LLP  
No implied license exists. This drawing should not be used to calculate areas for the purposes of valuation. Do not scale this drawing. All dimensions to be checked on site by the contractor and such dimensions to be their responsibility. All work must comply with relevant British Standards and Building Regulations requirements. Drawing errors and omissions to be reported to the architect.

Scale @A1 (@A3) 1:100 (1:200)	Date September 2014
Drawn by EC	Checked by SR
Job Number HB1423	Status Planning

Project Agar Grove Estate Regeneration
Drawing Plot A Roof GA Plan

<b>Hawkins\Brown</b>	
159 St John Street London EC1V 4QJ 020 7336 8030t	mail@hawkinsbrown.com www.hawkinsbrown.com
Drawing No. & Revision 1423_DWG_PlotA_00_207_A	

KEY PLAN

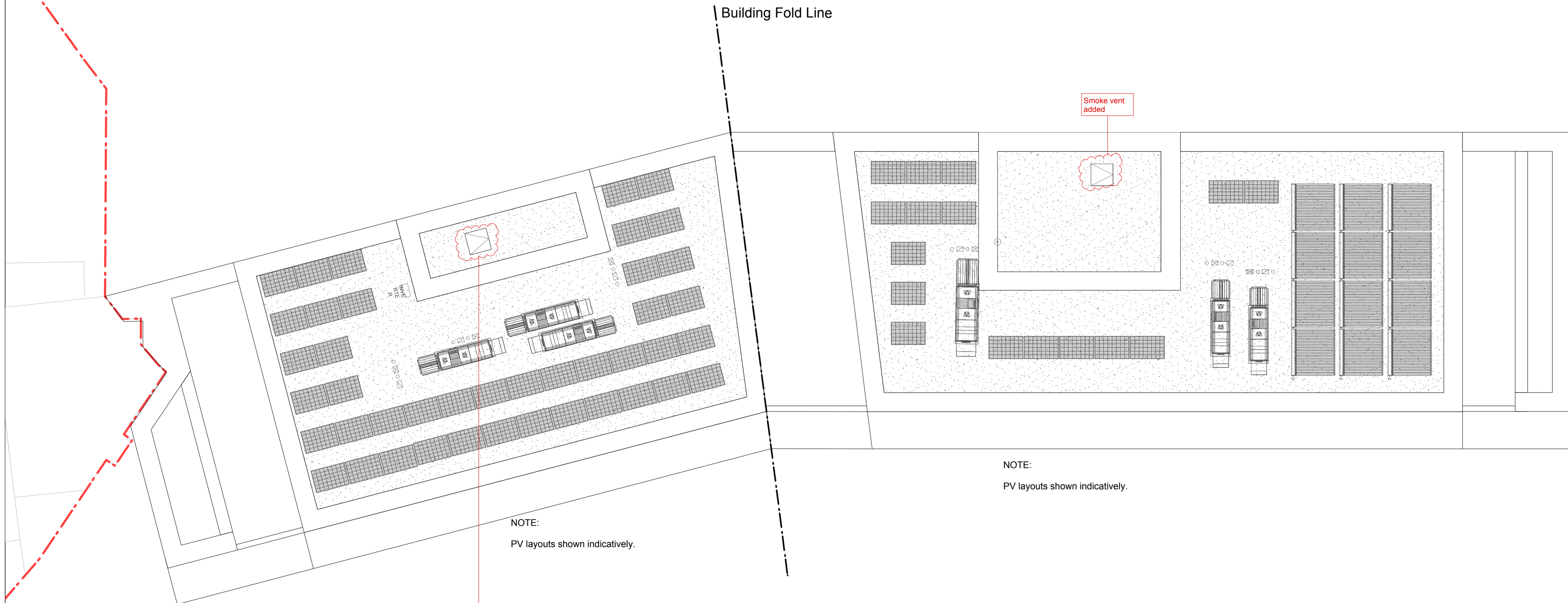


Scale 1:2500

Footprint and heights of building have changed, refer to 1423\_DWG\_PlotA\_290-293

Thickness and dimensions of all external walls updated in line with Stage E details and brick dimensions.

Plant equipment shown updated in line with other consultants tender information

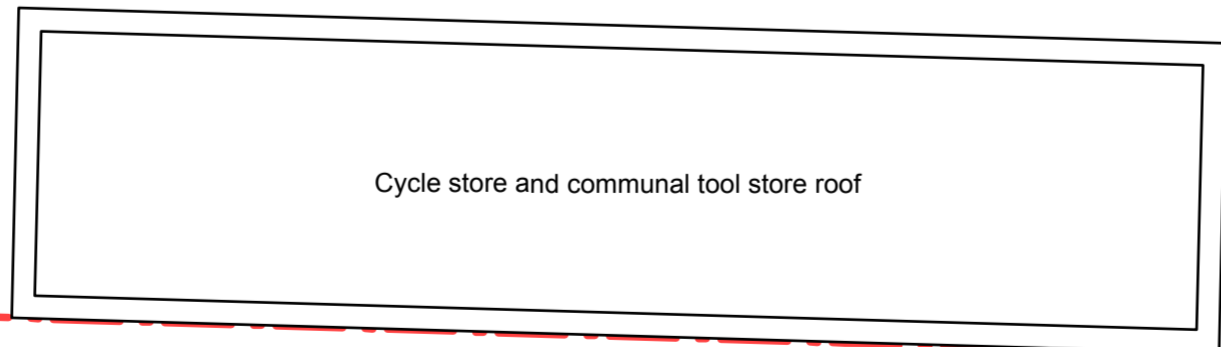


NOTE:  
PV layouts shown indicatively.

NOTE:  
PV layouts shown indicatively.

Smoke vent added

Smoke vent added



Cycle store and communal tool store roof



Revisions

Date	Rev	Note
02.09.14	A	All information shown is in line with Stage E Tender drawings. Revision clouds indicate changes from previously approved planning drawings. Application no. <b>2013/8088/P</b>

KEY	
	Site Boundary
	Agar Children's Centre Boundary
	Brown Roof

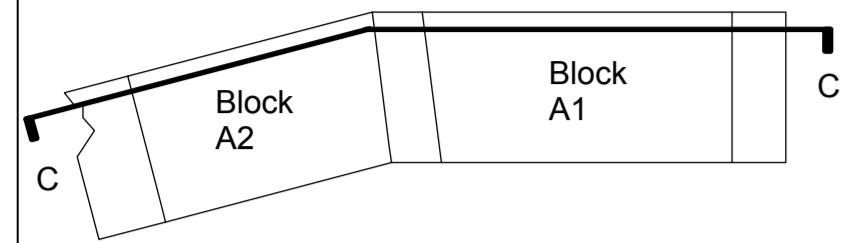
Copyright Hawkins Brown Architects LLP  
No implied license exists. This drawing should not be used to calculate areas for the purposes of valuation. Do not scale this drawing. All dimensions to be checked on site by the contractor and such dimensions to be their responsibility. All work must comply with relevant British Standards and Building Regulations requirements. Drawing errors and omissions to be reported to the architect.

Scale @A1 (@A3) <b>1:100 (1:200)</b>	Date <b>September 2014</b>
Drawn by <b>EC</b>	Checked by <b>SR</b>
Job Number <b>HB1423</b>	Status <b>Planning</b>

Project <b>Agar Grove Estate Regeneration</b>
Drawing <b>Plot A Overall Roof GA Plan</b>

<b>Hawkins\Brown</b>	
159 St John Street London EC1V 4QJ 020 7336 8030t	mail@hawkinsbrown.com www.hawkinsbrown.com
Drawing No. & Revision <b>1423_DWG_PlotA_00_208_A</b>	

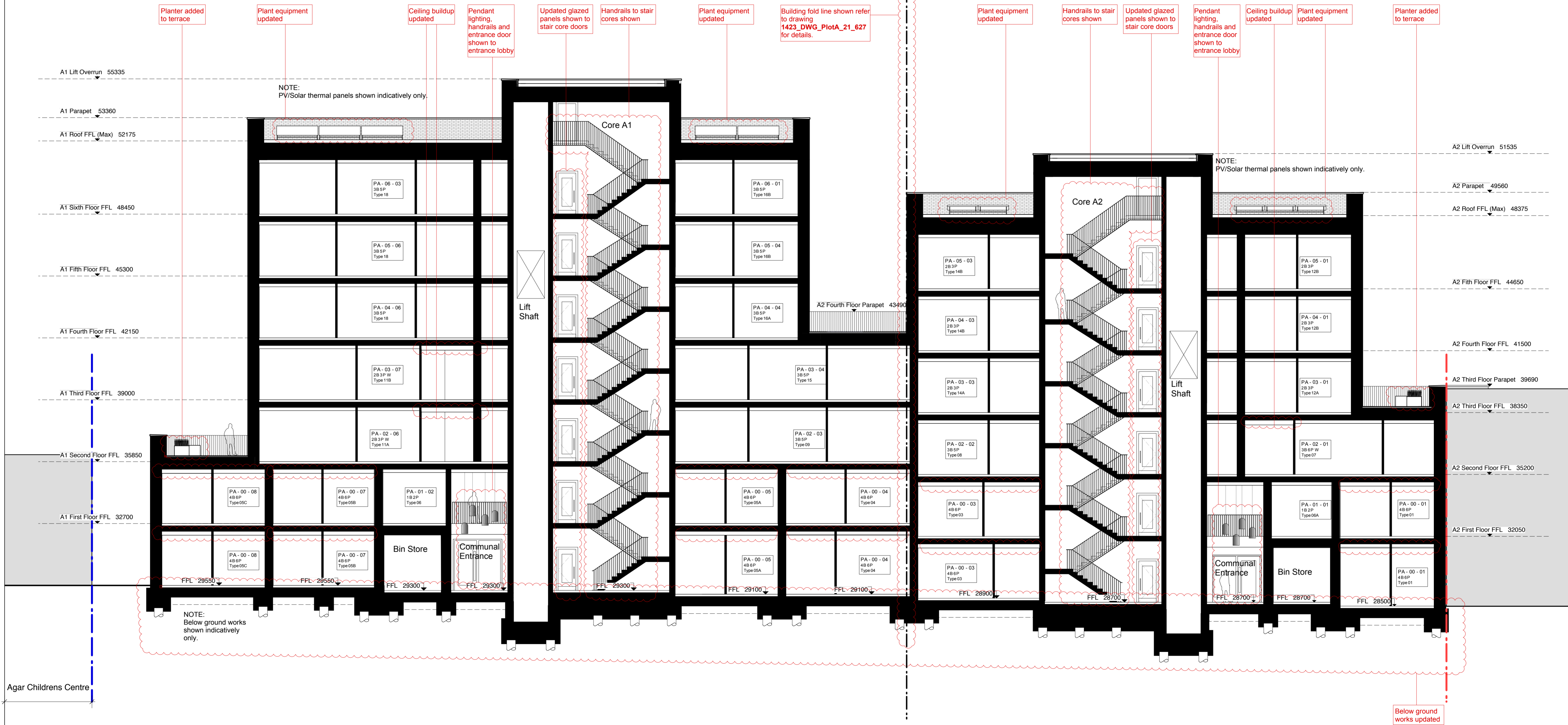
Key Plan



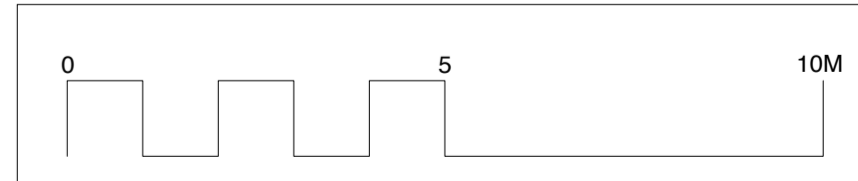
Footprint and heights of building have changed, refer to 1423\_DWG\_PlotA\_290-293

Internal partitions shown within apartments and maisonettes.

Ceiling buildup to all maisonettes updated



01 Section C  
Scale 1:100 @ A1



<b>Revisions</b> <table border="1"> <thead> <tr> <th>Date</th> <th>Rev</th> <th>Notes</th> </tr> </thead> <tbody> <tr> <td>02.09.14</td> <td>A</td> <td>All information shown is in line with Stage E Tender drawings. Revision clouds indicate changes from previously approved planning drawings. Application no. <b>2013/8088/P</b></td> </tr> </tbody> </table>		Date	Rev	Notes	02.09.14	A	All information shown is in line with Stage E Tender drawings. Revision clouds indicate changes from previously approved planning drawings. Application no. <b>2013/8088/P</b>	NOTE: Below ground works shown indicatively only.  NOTE: PV/Solar thermal panels shown indicatively only.	<b>KEY</b> - - - Site Boundary - - - Agar Children's Centre Boundary	Copyright Hawkins Brown Architects LLP  No implied license exists. This drawing should not be used to calculate areas for the purposes of valuation. Do not scale this drawing. All dimensions to be checked on site by the contractor and such dimensions to be their responsibility. All work must comply with relevant British Standards and Building Regulations requirements. Drawing errors and omissions to be reported to the architect.	Scale @A1 (@A3) 1:100 (1:200)  Drawn by JW  Job Number HB1423	Date September 2014  Checked by SR  Status Planning	Project Agar Grove Estate Regeneration  Drawing Plot A Proposed Long Section B	<b>Hawkins\Brown</b> 159 St John Street London EC1V 4QJ 020 7336 8030t mail@hawkinsbrown.com www.hawkinsbrown.com  Drawing No. & Revision 1423_DWG_PlotA_00_231_A
Date	Rev	Notes												
02.09.14	A	All information shown is in line with Stage E Tender drawings. Revision clouds indicate changes from previously approved planning drawings. Application no. <b>2013/8088/P</b>												