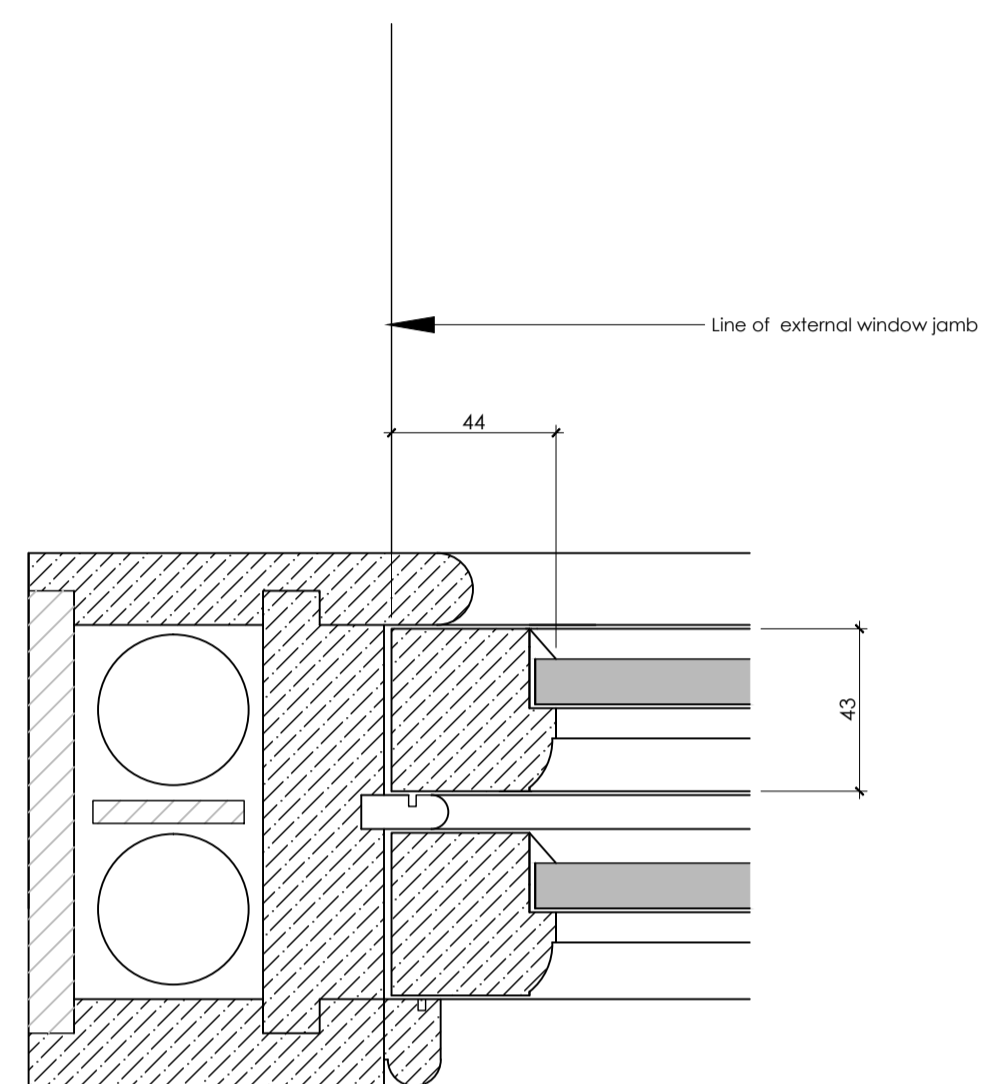


Vertical Section 1:2



Horizontal Section 1:2

NOTES

All joinery to be supplied to site fully primed with aluminium oxide primer prior to installation.

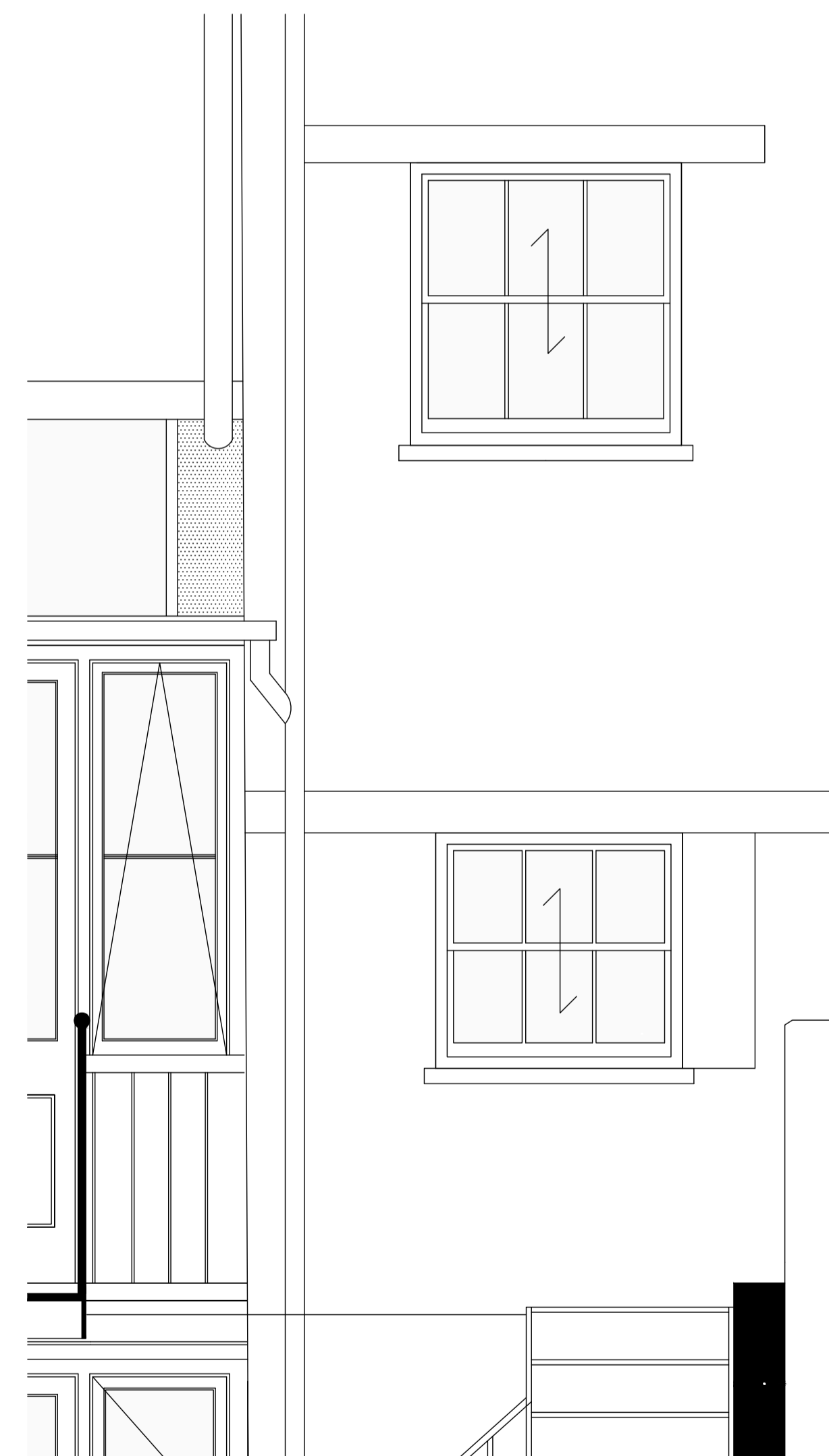
Fabrication in Douglas Fir with hardwood cills to all new window frames. ALL timber to be FSC sourced.

Fit with Slimlite Plus 4-5-3 double glazed units installed as manufacturers recommendations.

IRONMONGERY

Client choice: to be confirmed.

Slimlite double glazed sash Details (1:2 scale)



Above: new sash windows to rear elevation (ground floor and first floor RH)

| | | | |
|----------|----------|----------|--------------------|
| B | 16.09.14 | SFP | Planning revisions |
| A | 19.08.14 | SFP | Construction issue |
| Revision | Date | Initials | Notes |

PRIMROSE HILL
 6 Chamberlain Street

JOINERY DETAILS
 SHEET FOUR

CONSTRUCTION

benjamin + beauchamp
 architecture design conservation
 the borough studios, the borough,
 wedmore, somerset BS28 4EB
 T 01934 713313 F 01934 713314

| | | |
|----------|----------|----------|
| Drawn by | Date | Scale |
| SFP | 15/08/14 | 1:10/1:5 |

Drawing No: **0455.WD22** **B**