

# 7.6 Appearance - Expression and Materials

## Material Palette

The palette is calm and considered. It gives variety in texture, richness and identity whilst also referencing the local context in materials and colour. Materials are specified to be of a high quality and well detailed with a focus on robust, self finished materials that weather well with age and are environmentally sustainable.

Brick is the primary cladding material and is deployed across the site in a range illustrated on this page. The choice of a predominantly brick palette forms a sensitive relationship to the context and lends familiarity in a domestic environment. Variation has been sought in a complementary palette of brick types that can be used to define the character of individual plots and in certain areas, repeated to ultimately allow the reading of the full development as a distinctive quarter yet sympathetic to its context.

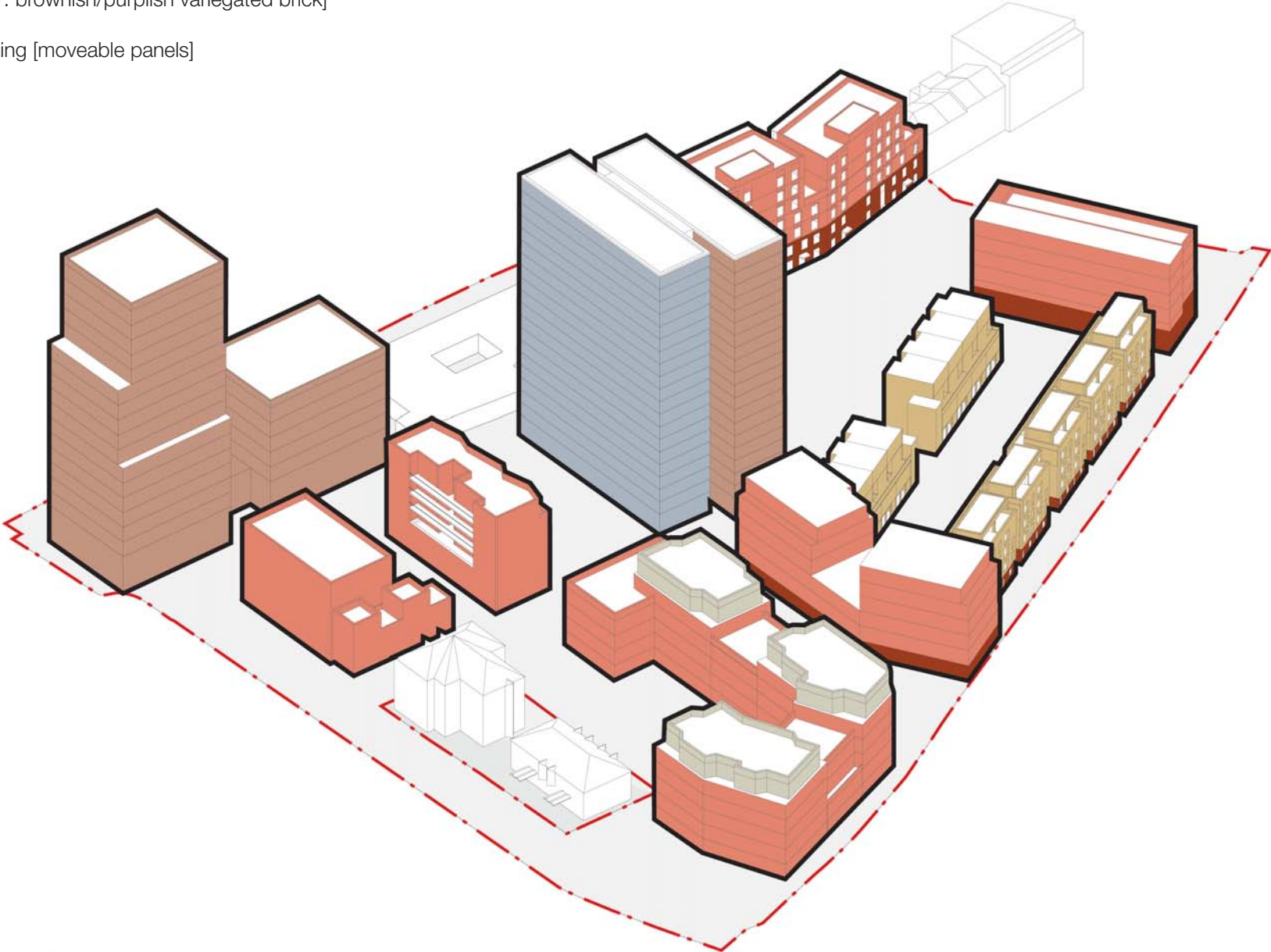
A limited palette of different bricks are proposed across the site giving an appropriate response to the different plots character and context. On a number of plots a change in brick colour has been employed to distinguish setbacks. Moreover it is expected that variation will also be achieved through mortar and pointing specification and in certain areas, details of brick patterning detail will be incorporated e.g. into parapets and cores and decorative coursing to highlight plinths.

High quality anodised aluminium bronze-gold perforated panels are proposed to the bin stores and plant rooms on limited instances where these occupy the external facade at ground level.

The existing facade of Lulworth Tower is proposed to be predominantly clear, opaque and coloured glass with brick 'bookends' complimenting the brick used within Plot B.

### KEY

- Wirecut Semi-Glazed Clinker Brick, Engobe [colour: brown/purple/silver variegated brick]
- Waterstruck Brick 1 [colour: variegated brick of purplish/pinkish]
- Waterstruck Brick 3, Double-Fired [colour: silver variegated brick]
- Waterstruck Brick 2 [colour: variegated brick of a buff, finish, with whitish and orange hue]
- Clinker Brick [colour: brownish/purplish variegated brick]
- Winter Garden Glazing [moveable panels]



Opposite: Illustrative View along Agar Grove of Plot JKL. The choice of brick forms a sensitive relationship to the context.

Above: Diagram identifying the brick types site wide

## 7.6 Appearance - Expression and Materials



### Glazed Brick

Example Product:  
Modular Clay Products, LTI green.

**Application:**  
The Glazed brick is used to the base of blocks CDE, the datum level varies by block between approx 450mm up to 1m. The Glazed brick is also used for the planters which are integrated into the facade brickwork, as shown in the planning drawings.

**Colour:**  
A dark green variegated brick, with a degree of variation within each brick.

**Finish:**  
A glazed finish.

**Mortar:**  
A flush jointed, buff coloured mortar to be consistent with the brickwork above



### Clinker Brick

Example Product:  
Janinhoff, MFZ-EF-301

**Application:**  
The Clinker brick is proposed to the bottom floors of the mansion blocks A, I, and G. Bonds as shown in elevations.

**Colour:**  
A brownish/purplish variegated brick with a degree of patternation within each brick,

**Finish:**  
A semi glazed finish, also with a degree of texture.

**Mortar:**  
A flush jointed, buff coloured mortar to be consistent with the brickwork below and above



### Waterstruck Brick 1

Example Product:  
Janinhoff, MFZ-EF-8C

**Application:**  
This waterstruck brick is proposed for all of the upper floors mansion blocks A, G & I, above the Clinker Brick base. Also Used for Blocks JK&L and CD&E from ground to top floor (except for the low level green glazed brick base).

**Colour:**  
A variegated brick of purplish/pinkish colour, also with orange colours, with a degree of patternation and variation of colour within each brick.

**Finish:**  
A waterstruck finish, with a slight glaze, and with stetched/cracked lines formed during the making process.

**Mortar:**  
A flush jointed, buff coloured mortar to be consistent with the brickwork below and above.



### Waterstruck Brick 2

Example Product:  
Janinhoff, MFZ-NF-12C

**Application:**  
This waterstruck brick is proposed for the terraces (block F) and villas (block H), and associated stair cores.

**Colour:**  
A variegated brick of a buff, finish, with whitish and orange hues, as well as darker, blackish hues. Each brick to have colour variation of these colours.

**Finish:**  
A waterstruck finish, with stetched/cracked lines formed during the making process.

**Mortar:**  
A flush jointed, buff coloured mortar to be consistent with the brickwork below and above.  
For the ground floor of the villa blocks a recessed mortar joint of a different colour is to be used, this is also to be used for bands across the facade.

## 7.6 Appearance - Expression and Materials



**Waterstruck Brick 3, Double-Fired**

Example Product:  
Strojer Tegl B715 'Silver Sky'

This water-struck brick is proposed for the attic storey of Block JKL. Splays to terrace recesses and corners are expressed with a sawtooth bond. In flat areas of brickwork, cut bricks will be introduced to randomize the bond.

Colour:  
A silver variegated brick, with a degree of patterning within each brick. The neutral, mottled grey tone is achieved by double-firing the brick.

Finish:  
Waterstruck bricks manufactured using a slop-moulded technique on a Petersen Press, creating a finer texture and soft arises. Matte finish.

Mortar:  
Flush pointed, colour to be determined after review of sample panels.



**Wirecut Semi-Glazed Clinker Brick, Engobe Finish**

Example Product:  
Janinhoff STP-EF-8C/glatt (Formerly 'TKK Blau Rot Blunt')

The Semi-Glazed Clinker brick is proposed for Block B and Lulworth Tower. The smooth, semi-glazed finish will help catch the light and the machined nature of the brick will lend itself to pre-casting of sections and panels. The manufacturer of the example shown here is also able to fabricate the brick as a slip with a moulded key on the rear face, which assists the precasting process. In flat areas of brickwork, cut bricks will be introduced to randomize the bond.

Colour:  
A brown/purple/silver variegated brick, with a degree of patterning within each brick.

Finish:  
Extruded wirecut with the addition of an engobe finish, reduced fired to create a slight variation in colour and producing a semi glazed effect. Crisp arises due to the extrusion process.

Mortar:  
Flush pointed, colour to be determined after review of sample panels.



**Waterstruck Brick 4, Engobe Finish**

Example Product:  
Strojer Tegl B512 'Luna'

This water-struck brick is proposed for the recessed accent / contrast panels in Block B. Vertical and horizontal panels will be expressed in contrasting horizontal and vertical bonds that run in the direction of each panel. Textured sawtooth brickwork is proposed for alternate horizontal panels higher up the building. In flat areas of brickwork, cut bricks will be introduced to randomize the bond.

Colour:  
White, with a degree of warm colour tone within each brick. The colour is achieved via application of a white engobe before firing to create a whitish appearance.

Finish:  
Waterstruck bricks manufactured using a slop-moulded technique on a Petersen Press, creating a finer texture and soft arises. Matte finish.

Mortar:  
Flush pointed, white mortar.

## 7.6 Appearance - Expression and Materials



**Glazed panels**

Clear glazed sliding door to balconies with aluminium frames (colour TBC) to Lulworth House.

Winter Garden Glazing movable glazing panels to fully open or enclose external balconies (glass colour TBC) to Lulworth House.



**Window Frames**

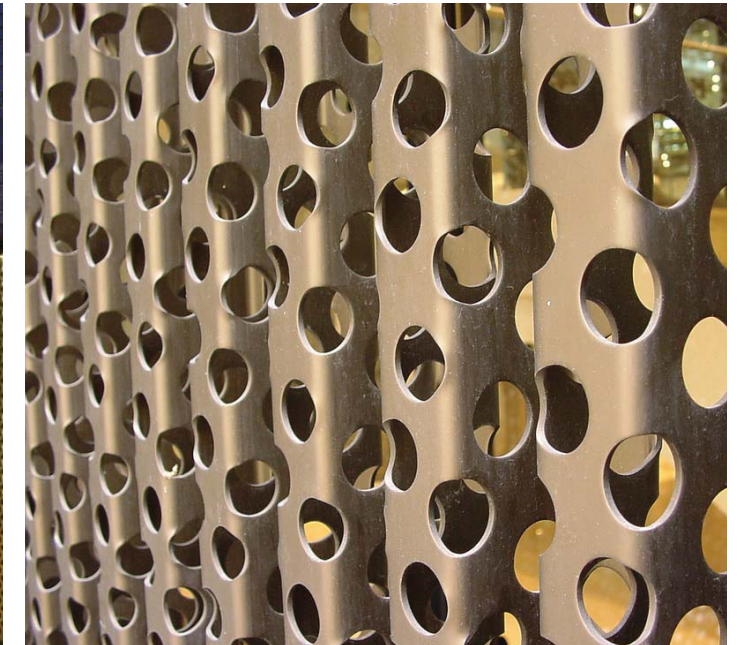
Window frames will have a thermally broken composite timber / aluminium frames to residential parts. Commercial areas and entrances will have thermally broken aluminium frames. Triple glazing will be used for dwellings, in line with Passivhaus principles.

Colour and Finish:  
The frames will have an anodized aluminium finish. Colour tones will be warm- but final selection will depend on comparison against each brick type. The image shown here illustrates the likely palette.



**Anodised Bronze/ Gold Aluminium Screen**

Anodised bronze/ gold aluminium screen/ door to limited number external elevation of plant room areas and bin stores.



**Anodised Bronze/ Gold Aluminium Solar Screen**

Full height anodised perforated aluminium panels, with a square channel profile solar shading screen to south elevation of Plot A. Panels to be fixed at ends. Middle sections may be movable, subject to detailed solar shading analysis.

## 7.6 Appearance - Expression and Materials

---



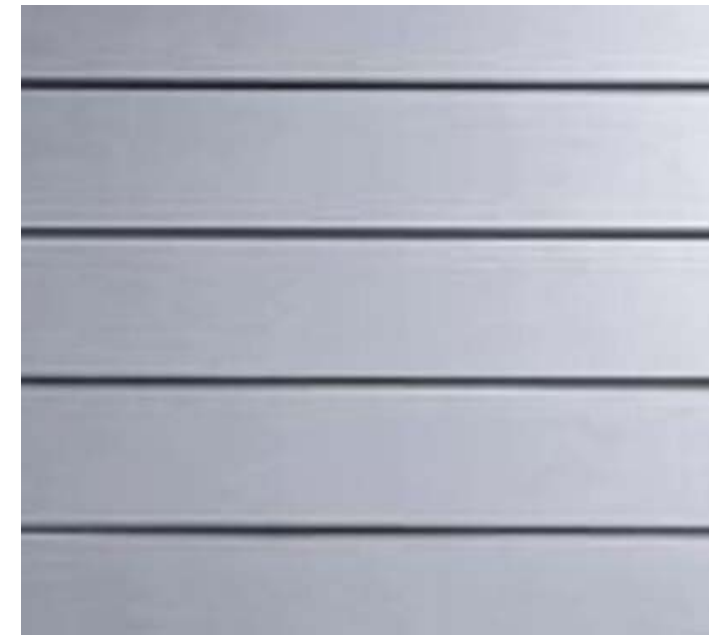
**Decorative Tiles**

Decorative tiles applied to communal entrance to both floor and vertical surfaces.



**Reconstituted Stone**

Reconstituted stone polished finish, colour light grey. Applied to stone banding, balcony and window surrounds.



**Example Zinc panel system.**

Horizontal zinc panelling (Rheinzinc or similar) Finish Pre-patina graphite grey to Stair cores at roof level on Plot G and zinc rainwater goods on F and H to match.

## 7.6 Appearance - Expression and Materials - PLOT A AMENDMENTS



### Plot A North Elevation

Ground and first floor expressed in a clinker brick - brownish/purplish colour.  
Above first floor waterstruck brick in a waterstruck brick - purplish/pinkish colour.

Note: this principle applies to all elevations.

### Plot A Above First Floor Waterstruck Brick

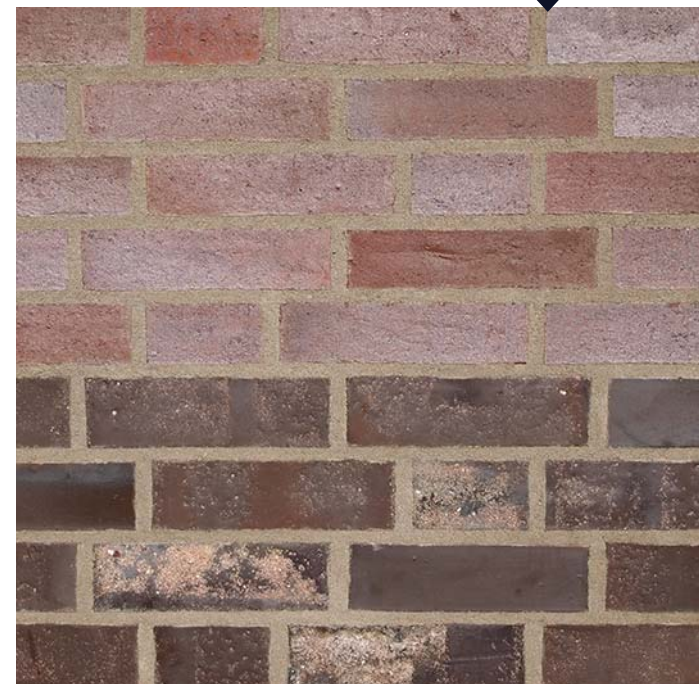
Example Product:  
Janinhoff, MFZ-EF-8C

Application:  
This waterstruck brick is proposed for the upper floors of block A above the clinker brick base.

Colour:  
A variegated brick of purplish/pinkish colour, also with orange colours, with a degree of patternation and variation of colour within each brick.

Finish:  
A waterstruck finish, with a slight glaze, and with stetched/cracked lines formed during the making process.

Mortar:  
A flush jointed, buff coloured mortar to be consistent wit the brickwork below and above.



### Plot A Ground & First Floor Clinker Brick

Example Product: Janinhoff, MFZ-EF-301

Application:  
The Clinker brick is propped to the bottom floors of block A. Bonds as shown in elevations.

Colour:  
A brownish/purplish variegated brick with a degree of patternation within each brick.

Finish:  
A semi glazed finish, also with a degree of texture.

Mortar:  
A flush jointed, buff coloured mortar to be consistent