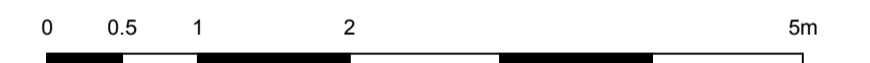


NOTES:

1. Unit 1, basement GIA = 73 sqm



planning	17.06.14	A
issue:	date:	revision:

Studio Stassano

27 Sutherland Street
London SW1V 4JU
United Kingdom

T +44 (0)20 7233 7421
M +44 (0)77 9669 4196
E info@studiostassano.com
www.studiostassano.com

Project

2 Dumpton Place

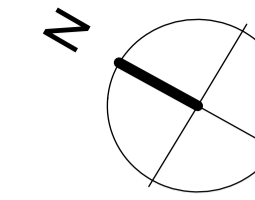
Drawing

Proposed Basement Plan

Drawing No.

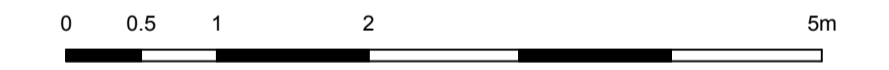
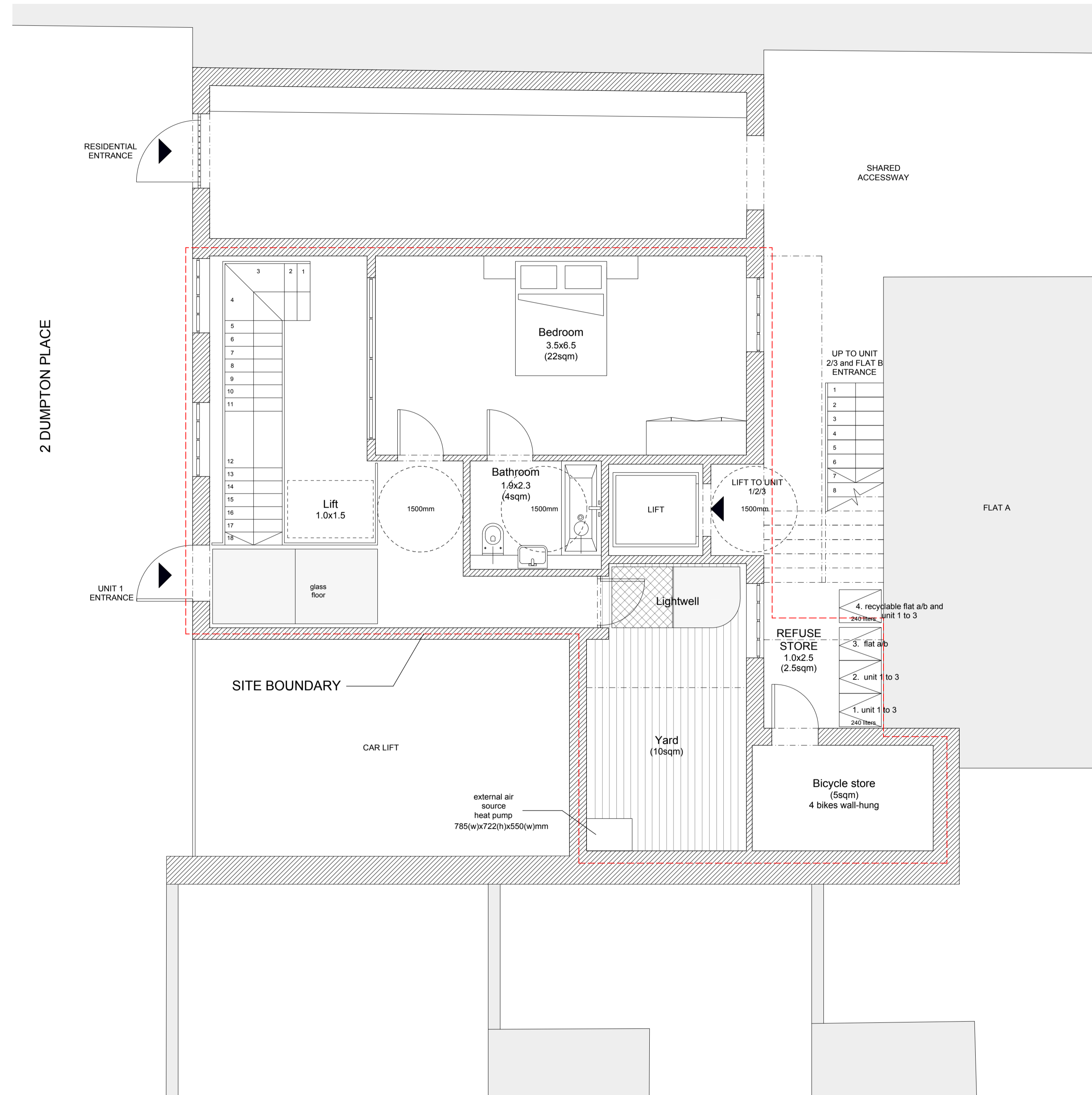
2DP(20)A01

Job No.	Date	Scale
2DP01	29.05.14	1:100@A3 1:50@A1



NOTES:

1. Unit 1, ground floor GIA = 45 sqm



planning	14.08.14	B
planning	17.06.14	A
issue:	date:	revision:

Studio Stassano

27 Sutherland Street
London SW1V 4JU
United Kingdom

T +44 (0)20 7233 7421
M +44 (0)77 9669 4196
E info@studiostassano.com
www.studiostassano.com

Project

2 Dumpton Place

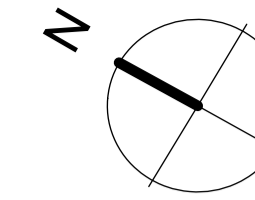
Drawing

Proposed Ground Floor Plan

Drawing No.

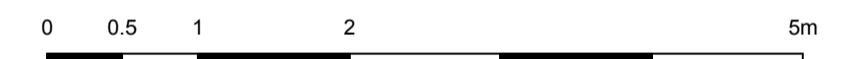
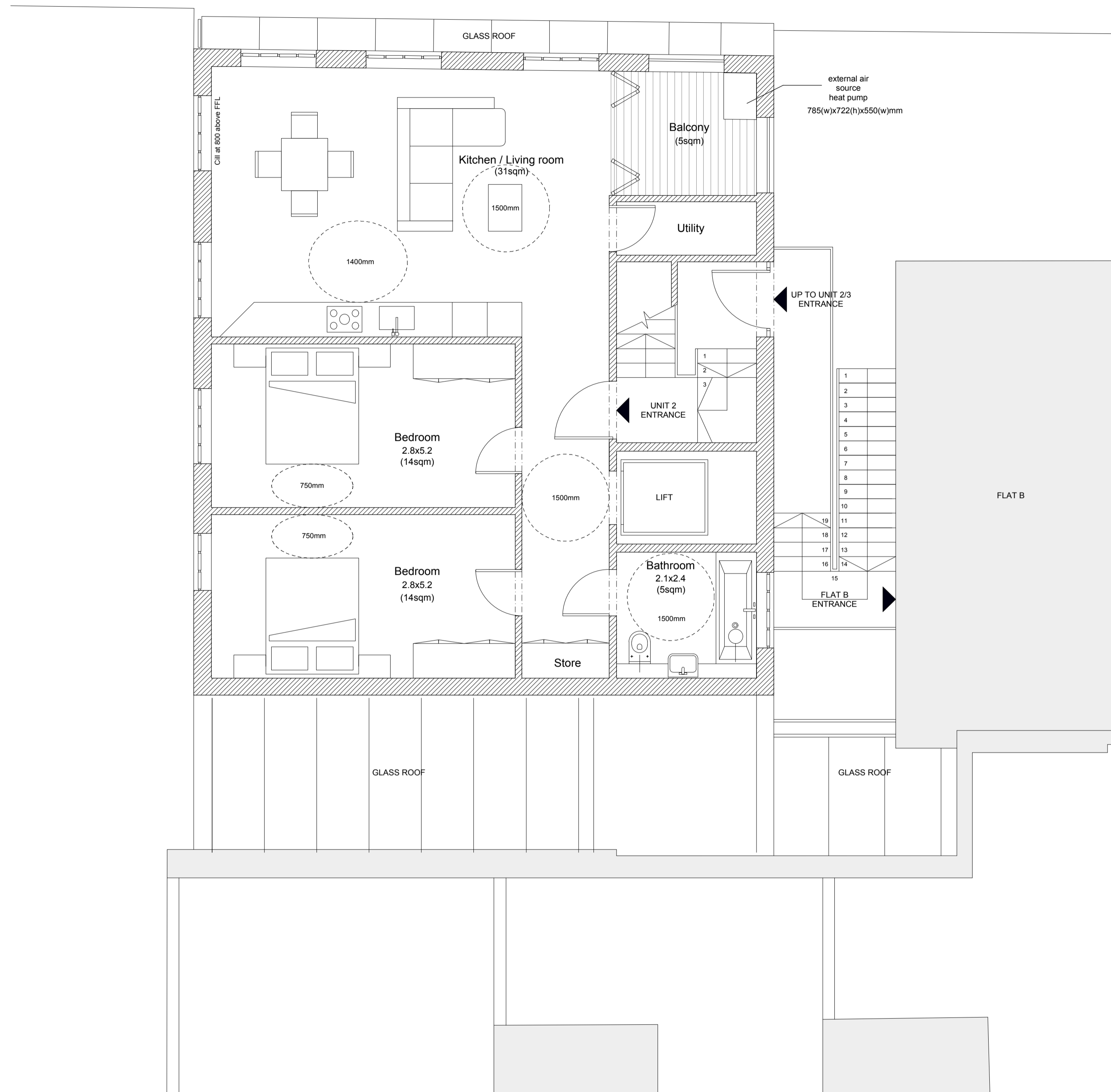
2DP(20)A02

Job No.	Date	Scale
2DP01	29.05.14	1:100@A3 1:50@A1



NOTES:

1. Unit 2, first floor GIA = 78 sqm



planning	14.08.14	B
planning	17.06.14	A
issue:	date:	revision:

Studio Stassano

27 Sutherland Street
London SW1V 4JU
United Kingdom

T +44 (0)20 7233 7421
M +44 (0)77 9669 4196
E info@studiostassano.com
www.studiostassano.com

Project

2 Dumpton Place

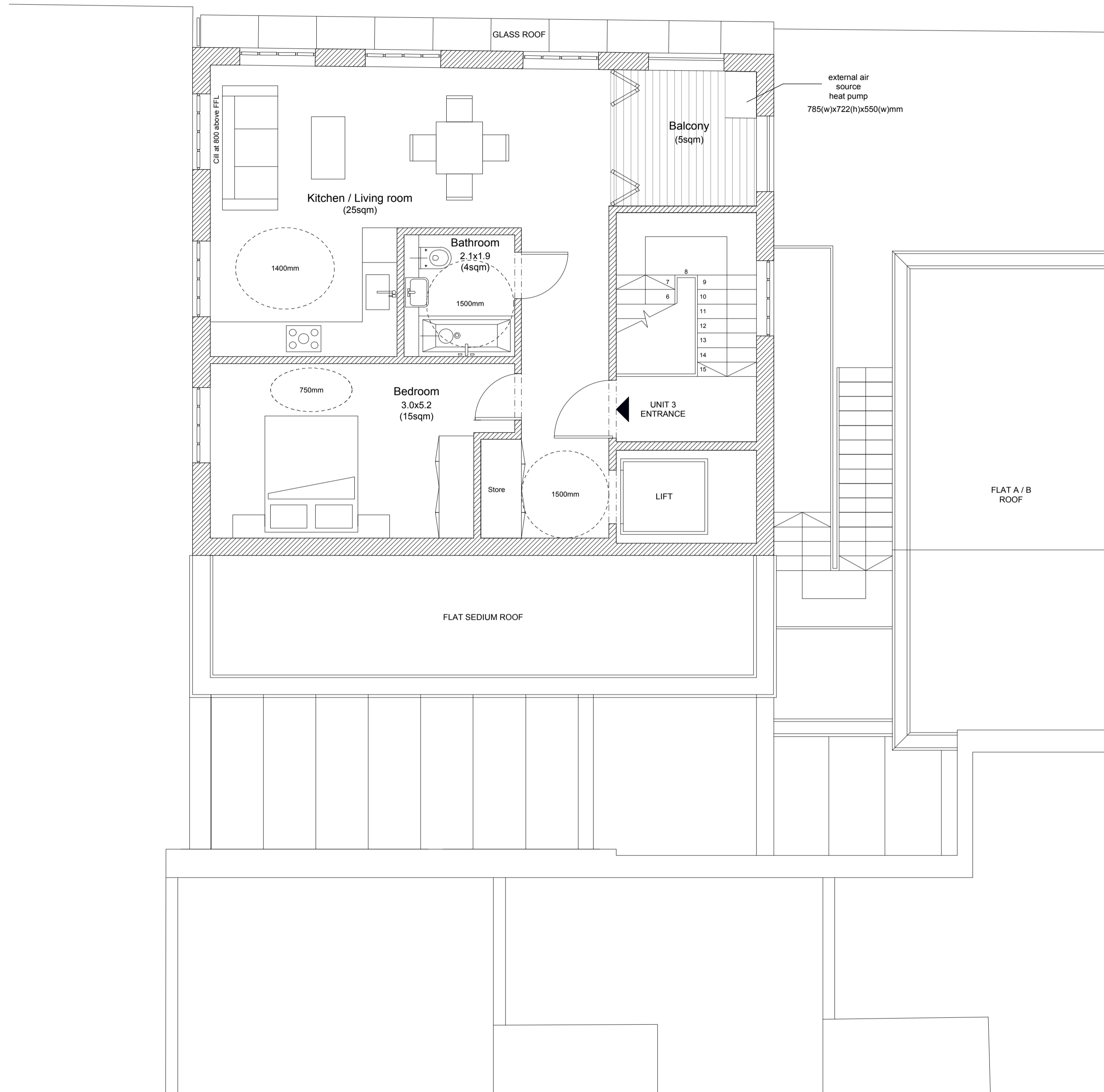
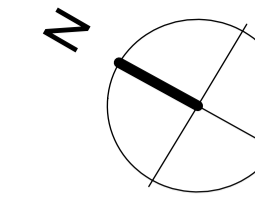
Drawing

Proposed First Floor Plan

Drawing No.

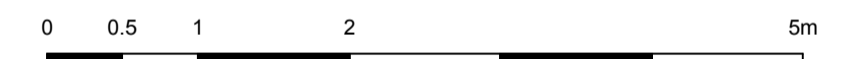
2DP(20)A03

Job No.	Date	Scale
2DP01	29.05.14	1:100@A3 1:50@A1



NOTES:

- 1. Unit 3, second floor GIA = 56 sqm



planning	14.08.14	B
planning	17.06.14	A
issue:	date:	revision:

Studio Stassano

27 Sutherland Street
 London SW1V 4JU
 United Kingdom

T +44 (0)20 7233 7421
 M +44 (0)77 9669 4196
 E info@studiostassano.com
 www.studiostassano.com

Project
2 Dumpton Place
 Drawing
Proposed Second Floor Plan

Drawing No.
2DP(20)A04

Job No.	Date	Scale
2DP01	29.05.14	1:100@A3 1:50@A1

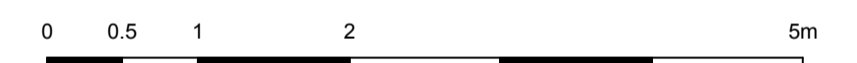


NOTES:

1. All proposed materials and detailing to match existing

KEY:

- A. Metal framed panelled window (dark grey)
- B. Metal framed glazed panelled door
- C. Window metal spandrel panel (dark grey)
- D. Brickwork
- E. Render finish
- F. Metal gate



planning	14.08.14	B
planning	17.06.14	A
issue:	date:	revision:

Studio Stassano

27 Sutherland Street
London SW1V 4JU
United Kingdom

T +44 (0)20 7233 7421
M +44 (0)77 9669 4196
E info@studiostassano.com
www.studiostassano.com

Project

2 Dumpton Place

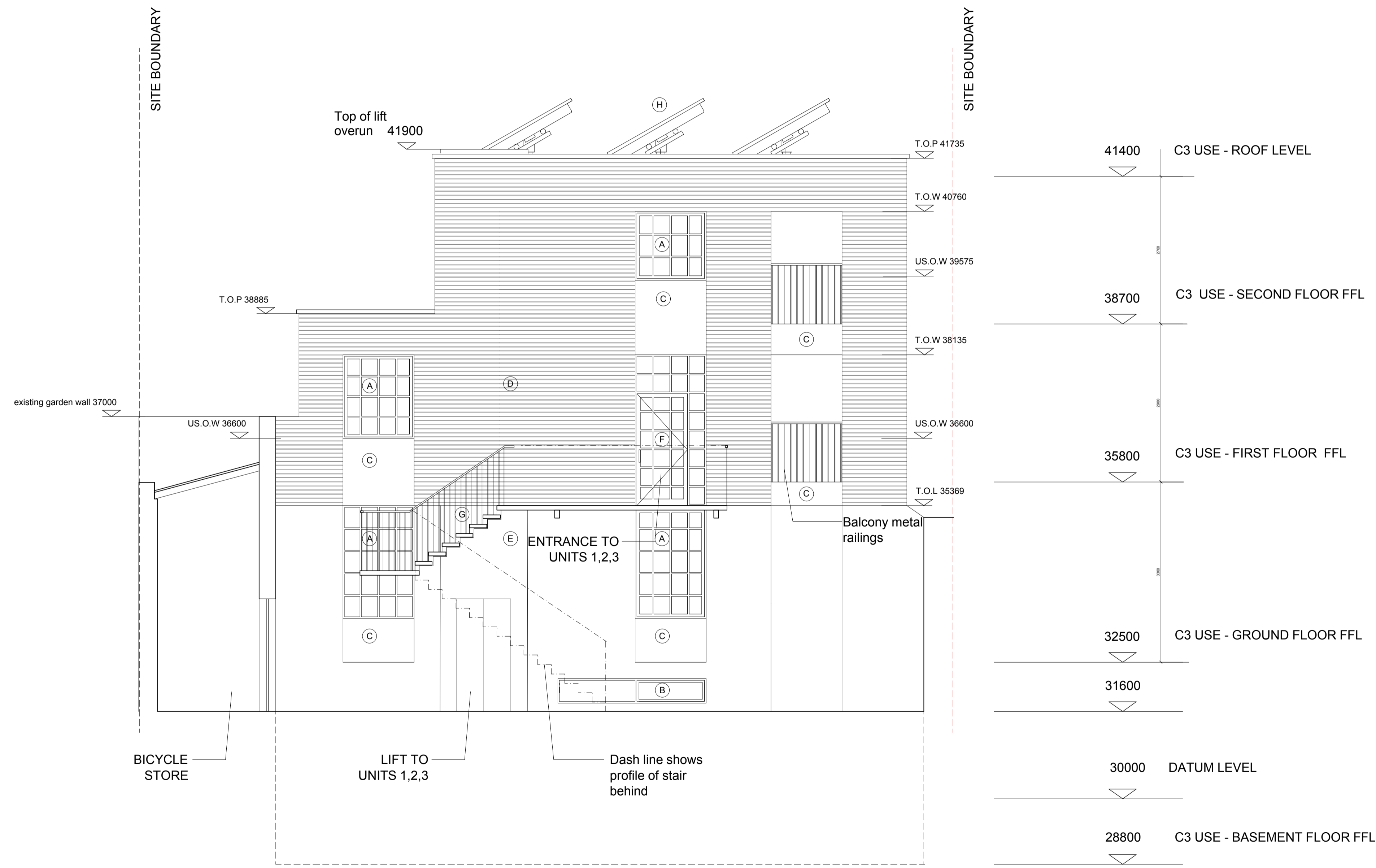
Drawing

Proposed Front Elevation

Drawing No.

2DP(20)A05

Job No.	Date	Scale
2DP01	13.06.14	1:100@A3 1:50@A1

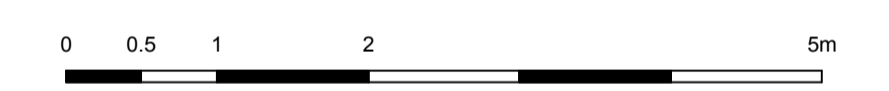


NOTES:

1. All proposed materials and detailing to match existing

KEY:

- A. Metal framed panelled window (dark grey)
- B. Metal framed openable window (dark grey)
- C. Window metal spandrel panel (dark grey)
- D. Brickwork
- E. Render finish
- F. Metal framed glazed panelled door
- G. Metal stair painted black with railings at 100mm centers
- H. Solar thermal panel



planning	14.08.14	B
planning	17.06.14	A
issue:	date:	revision:

Studio Stassano

27 Sutherland Street
London SW1V 4JU
United Kingdom

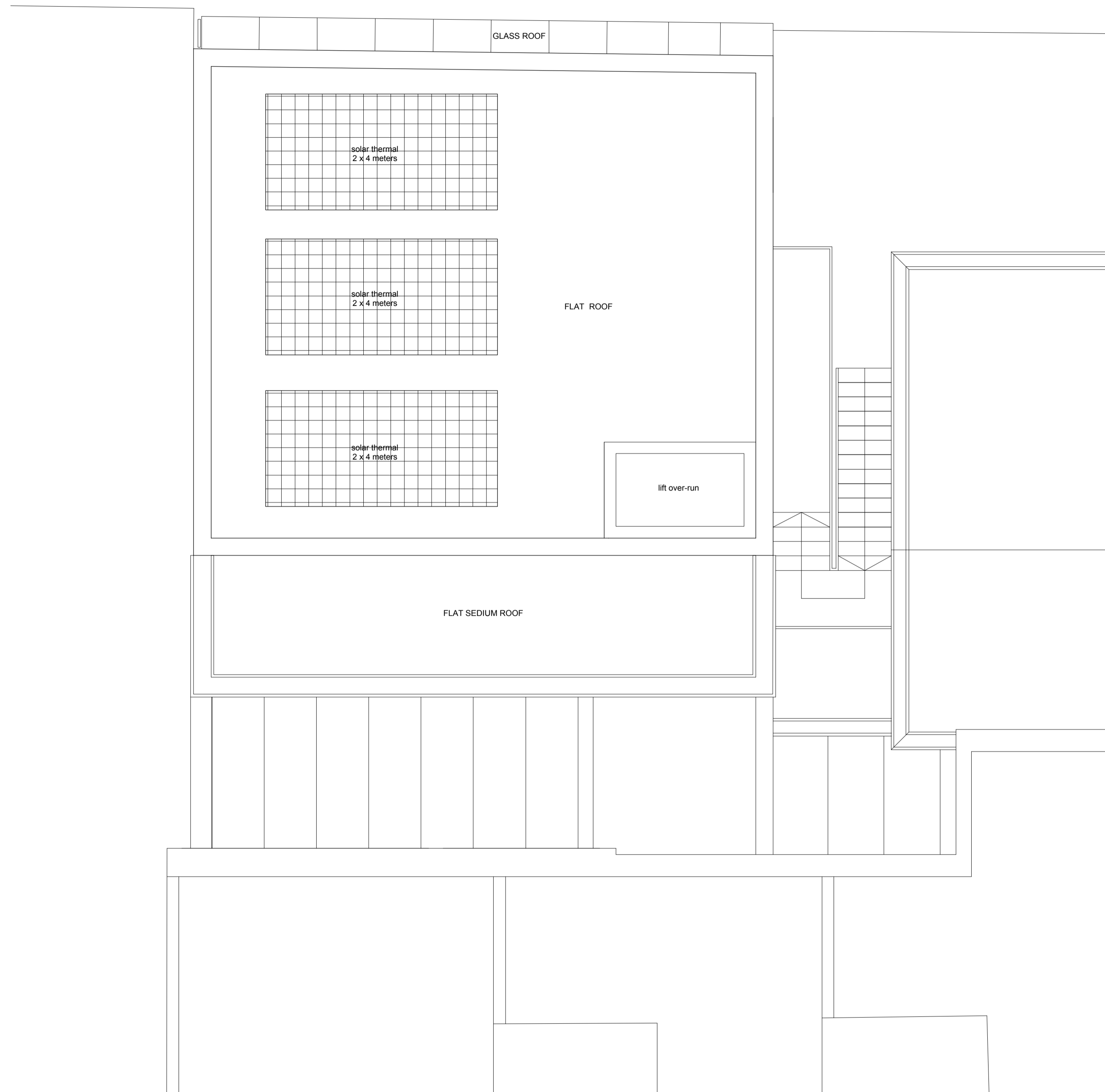
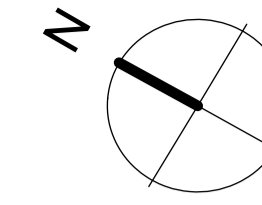
T +44 (0)20 7233 7421
M +44 (0)77 9669 4196
E info@studiostassano.com
www.studiostassano.com

Project
2 Dumpton Place

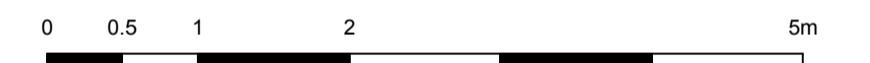
Drawing
Proposed Rear Elevation

Drawing No.
2DP(20)A06

Job No.	Date	Scale
2DP01	13.06.14	1:100@A3 1:50@A1



NOTES:



planning	14.08.14	-
issue:	date:	revision:

Studio Stassano

27 Sutherland Street
London SW1V 4JU
United Kingdom

T +44 (0)20 7233 7421
M +44 (0)77 9669 4196
E info@studiostassano.com
www.studiostassano.com

Project

2 Dumpton Place

Drawing

Proposed Roof Plan

Drawing No.

2DP(20)A07

Job No.	Date	Scale
2DP01	29.07.14	1:100@A3 1:50@A1