

Products

W20

W20 is the traditional heavy-duty framing system, 32mm wide with 5mm thick flanges, originally developed for commercial and industrial applications. It accommodates single and insulating glass units up to 16mm thick in the same profiles simply with a change of bead. All glazing, whether in fixed lights or casements, is in the same plane. It can be divided into small panes with tee glazing bars, having a table face width of no more than 29mm. Hinged casements, hung at top, bottom or side, and swing windows pivoted horizontally or vertically, can all be constructed from the same kit of profiles. Elemental coupling is achieved with simple slender transoms and mullions.



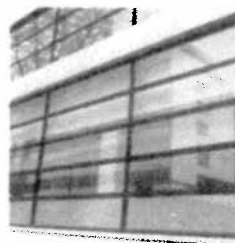
W30

A slimline derivative of W20, W30 is suitable for outward opening double glazed domestic and light commercial applications. It incorporates double weatherseals plus fully drained and ventilated glazing. Its ability to house 18mm sealed units whilst offering a narrow 51mm sightline on opening windows allows W30 to attain an exceptional energy performance rating.



W40

An evolutionary development from W20, W40 offers continuity of style with the same casement sightlines as W20 but the 40mm wide profiles permit double glazing with 26mm thick units. The insulating glass units are drained and ventilated in accordance with modern best practice and gasket glazed to ensure consistent neatness and reliability of seal. In addition to improved thermal performance, weathertightness is significantly enhanced and fittings can be less obtrusive with variable geometry hinges, friction pivots and multi-point locking cremone bolts concealed within the profiles. W40 achieves the Secured by Design standard.



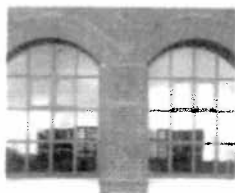
SMW

Steel was the favoured framing material for residential windows during the first half of the 20th century and is still specified in many high-class homes. Standard Metal Windows (SMW) are particularly suitable for renovation work as similar profiles, 25mm wide with 3mm thick flanges and the same standard 500 or 600mm modules, remain available today.



Tubular Profile Systems

Cold-formed tubular profiles in a variety of sight lines and frame depths extend the scope of steel construction into heavy-duty doors, screens and curtain walls. Retaining the attraction of long spans and slender lines, bringing maximum lightness and transparency to a façade, tubular profile systems lend themselves well to high traffic showcase entrances and use in fire protection. Insulated profiles incorporating thermal barriers are available to respond to ever tightening energy conservation requirements.

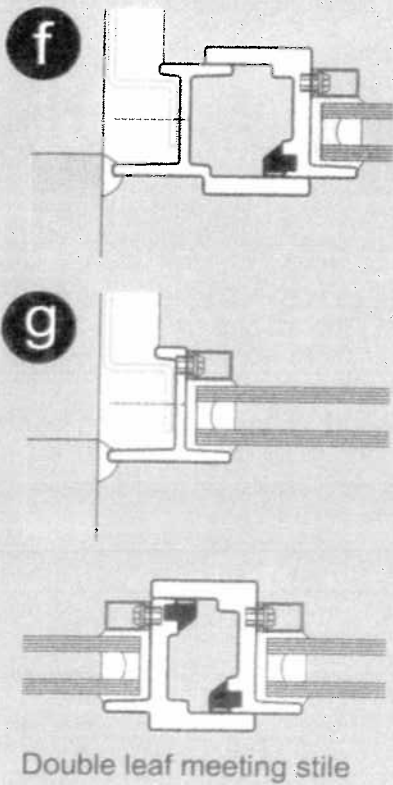
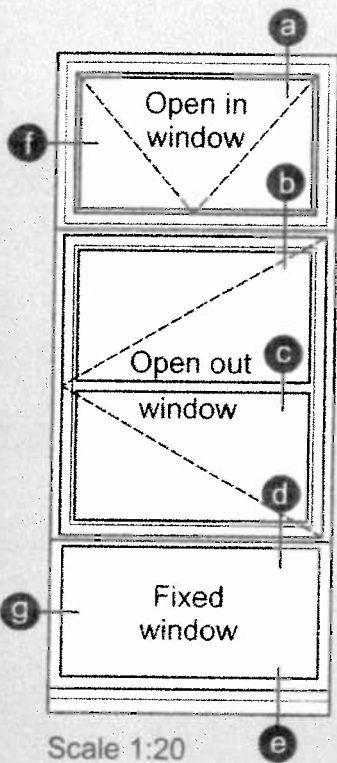


Choosing the Right Steel Window

With different characteristics of frames resulting in variations in aesthetics and performance, choosing the right steel window for a project is important. The matrix below is designed to help with the decision making process. After identifying the specification that meets the project requirements, please turn to the appropriate product section for further details.

	Commercial Applications	Domestic Applications	Single Glazed	Double Glazed	Corrosion Protection	Colour Coating	Energy Conservation	Enhanced Security	Fire Rating
W20									
W30									
W40									
SMW									
Tubular Profile									

W20



a

b

c

d

e

Weatherdrip transom coupling

Glazing bar

Direct coupling

Pressed metal sill

Chamfered bead

Square bead

Rectangular bead

Putty glazed

Scale 1:2