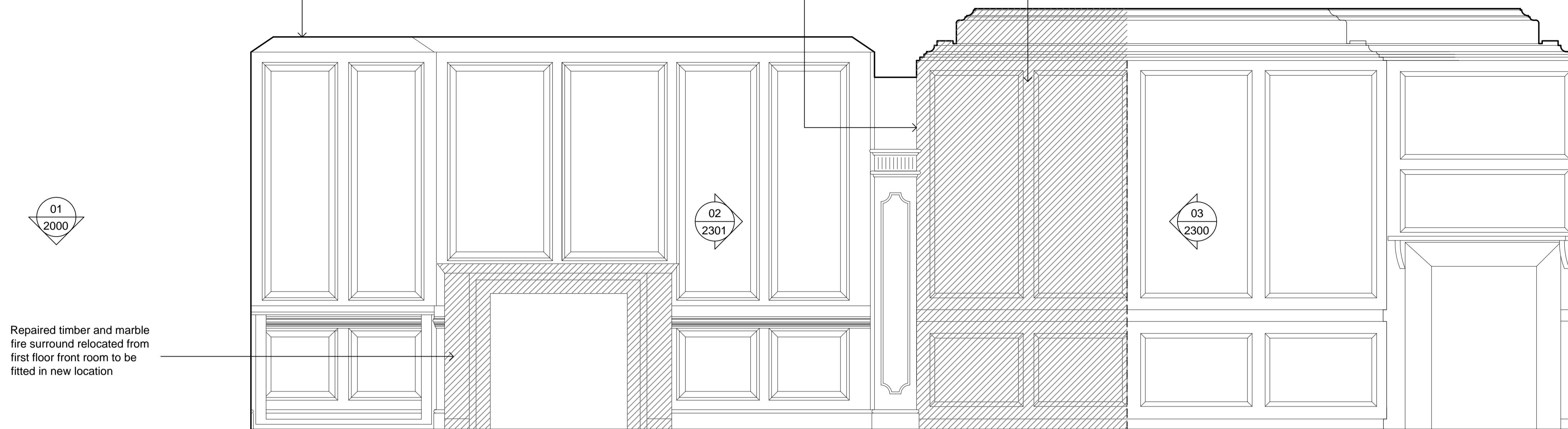


Cornice shown indicatively,
no access at time of survey

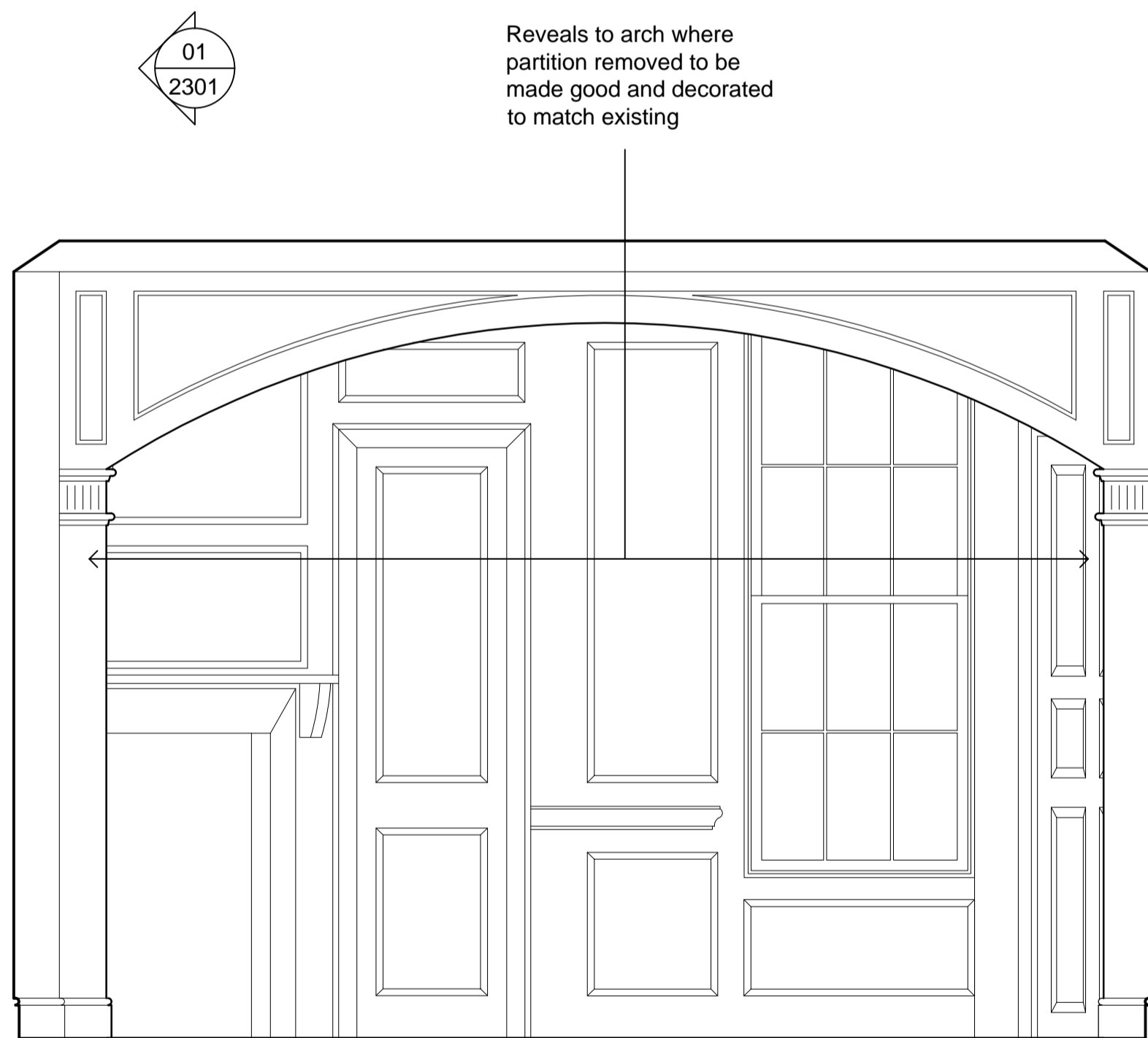
Existing arch to be made
good where C20th partition
has been removed

New section of dado
panelling to match existing

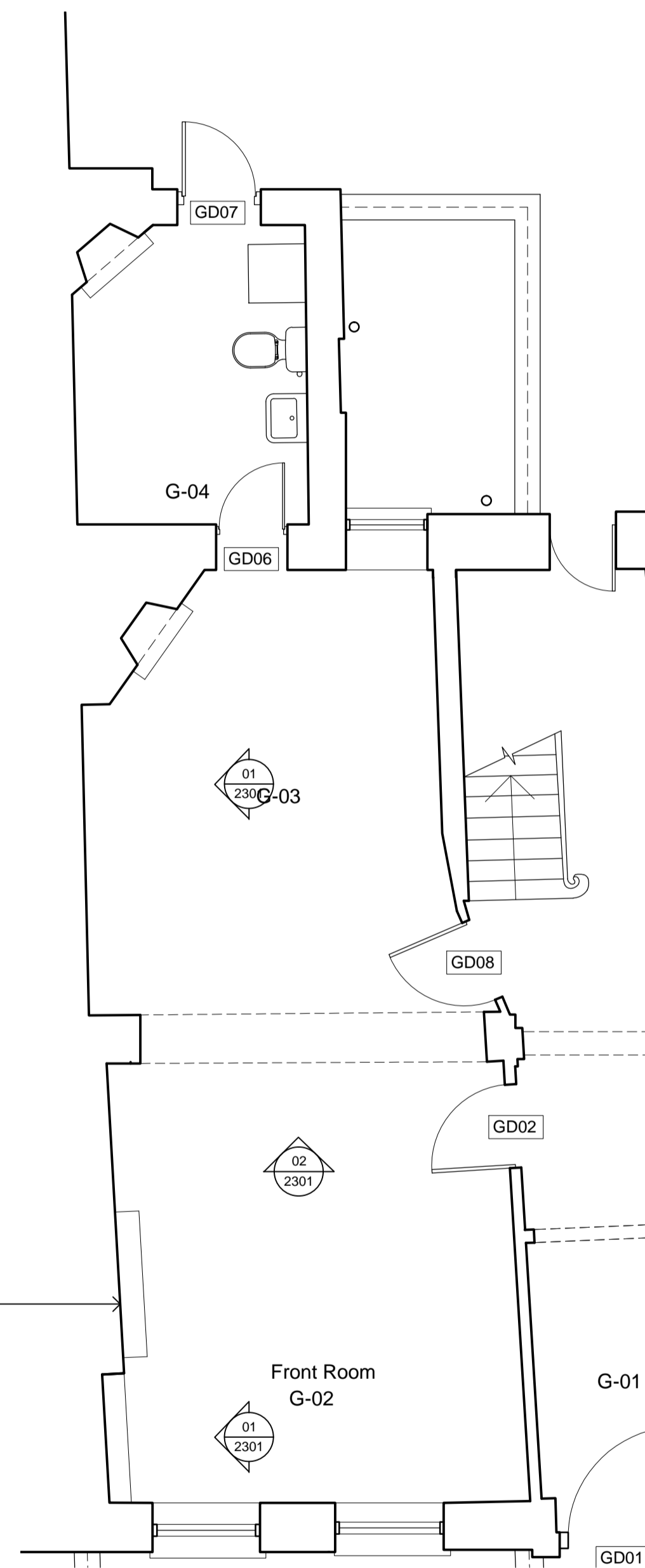


01 Internal Elevation, West
2301 1:20

Reveals to arch where
partition removed to be
made good and decorated
to match existing



02 Internal Elevation, North
2301 1:20



03 Key Plan
2301 1:50

Repaired timber and marble
fire surround relocated from
first floor front room to be
fitted in new location

Proposed Alteration

ISSUED FOR PLANNING

Scale 1:20
0 200 400 1000 mm

N

Notes:
1 Any dwg format drawing is to be read only in conjunction with and at the scale of the accompanying pdf.
2 Status 'C' drawing (Construction):
All dimensions are to be checked on site by the contractor, scaling is for Planning purposes only.
Unless otherwise indicated, all dimensions are in millimeters.
All information on this drawing is to be read in conjunction with the relevant Donald Insall Associates specification and trade contractors' drawings and information by specialists.
3 In the event of any query, please contact us immediately.
4 This drawing contains survey information by others and is to be used solely for the purposes for which it was issued.

Rev	Date	Dwn	Auth	Revision

Rev	Date	Dwn	Auth	Revision
-	10/06/2014	TJB	MHS	INITIAL ISSUE

Drawing Status
F Feasibility
S Sketch Design
D Design
P Planning
B Building Control
W Working Drawing
M Measurement
T Tender
C Construction
R Record

**7 GREAT ORMOND STREET
LONDON, W1**

Donald Insall Associates
Chartered Architects and Historic Building Consultants
12 Devonshire Street, London W1G 7AB
T: (+44)20 7245 9888 www.insall-architects.co.uk

Project	GOS7.02	No	2301
Scale	(A1) 1:20 50	Status	P
		Rev	-