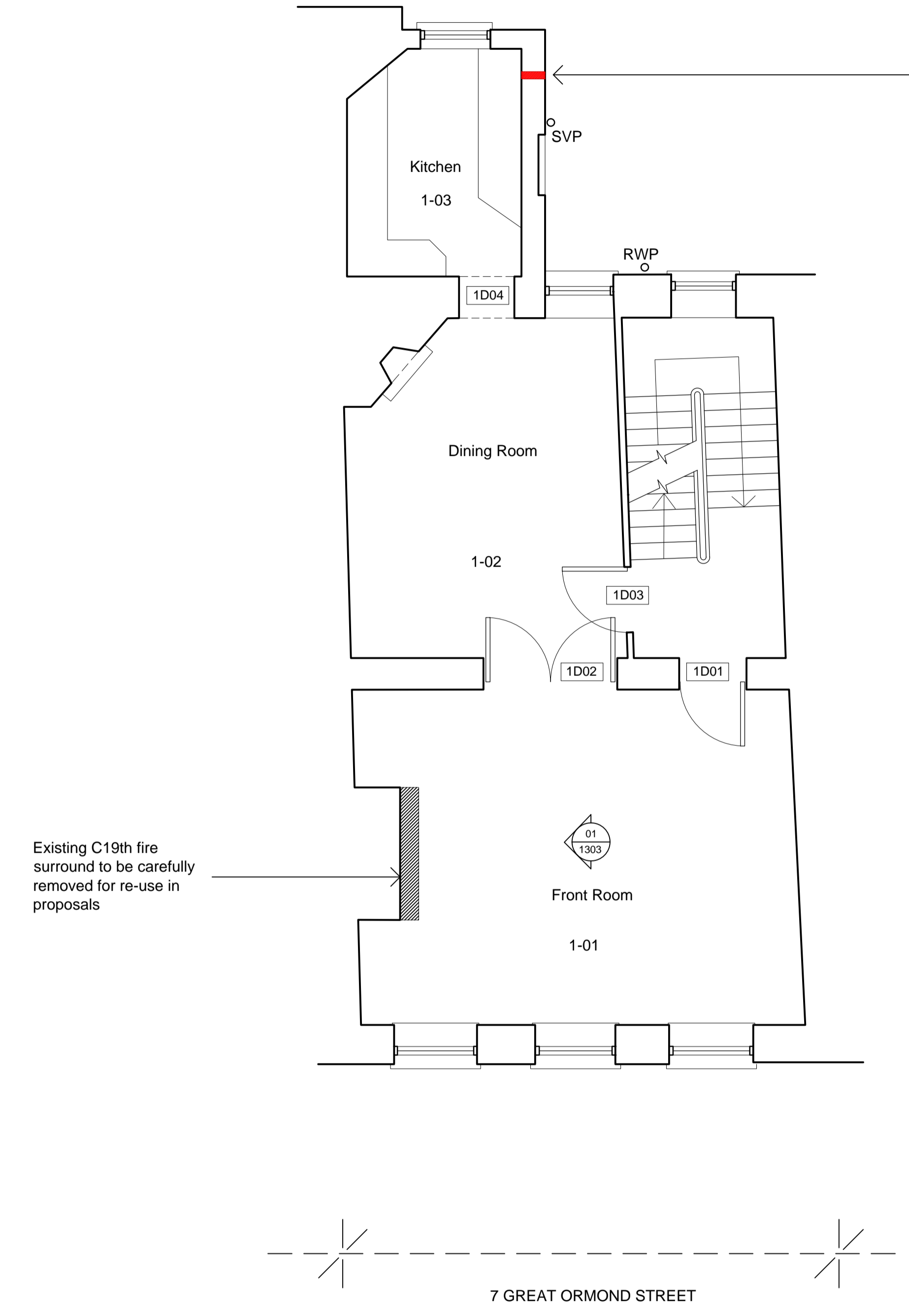




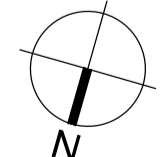
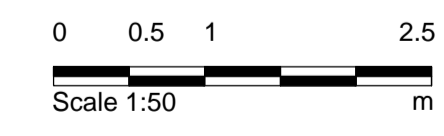
01 Ground Floor Plan  
1000 1:50



02 First Floor Plan  
1000 1:50

New hole to be cut into external wall to facilitate installation of boiler flue in proposals to facilitate relocation of boiler from existing fire place in G-04 to kitchen 1-03

- To Be Removed
- To Be Salvaged for Re-use



ISSUED FOR PLANNING

**Notes:**  
 1 Any dwg format drawing is to be read only in conjunction with and at the scale of the accompanying pdf.  
 2 Status 'C' drawing (Construction):  
 All dimensions are to be checked on site by the contractor, scaling is for Planning purposes only.  
 Unless otherwise indicated, all dimensions are in millimeters.  
 All information on this drawing is to be read in conjunction with the relevant Donald Insall Associates specification and trade contractors' drawings and information by specialists.  
 3 In the event of any query, please contact us immediately.  
 4 This drawing contains survey information by others and is to be used solely for the purposes for which it was issued.

Rev	Date	Dwn	Auth	Revision

Rev	Date	Dwn	Auth	Revision
-	10/06/2014	TJB	MHS	INITIAL ISSUE

**Drawing Status**  
 F Feasibility  
 S Sketch Design  
 D Design  
 P Planning  
 B Building Control  
 W Working Drawing  
 M Measurement  
 T Tender  
 C Construction  
 R Record

7 GREAT ORMOND STREET  
 LONDON, W1  
 Ground and First Floor Plan  
 as Existing

**Donald Insall Associates**  
 Chartered Architects and Historic Building Consultants  
 12 Devonshire Street, London W1G 7AB  
 T: (+44)20 7245 9888 www.insall-architects.co.uk

Project	GOS7.02	No	1000
Scale	(A1) 1:50	Status	P
		Rev	-