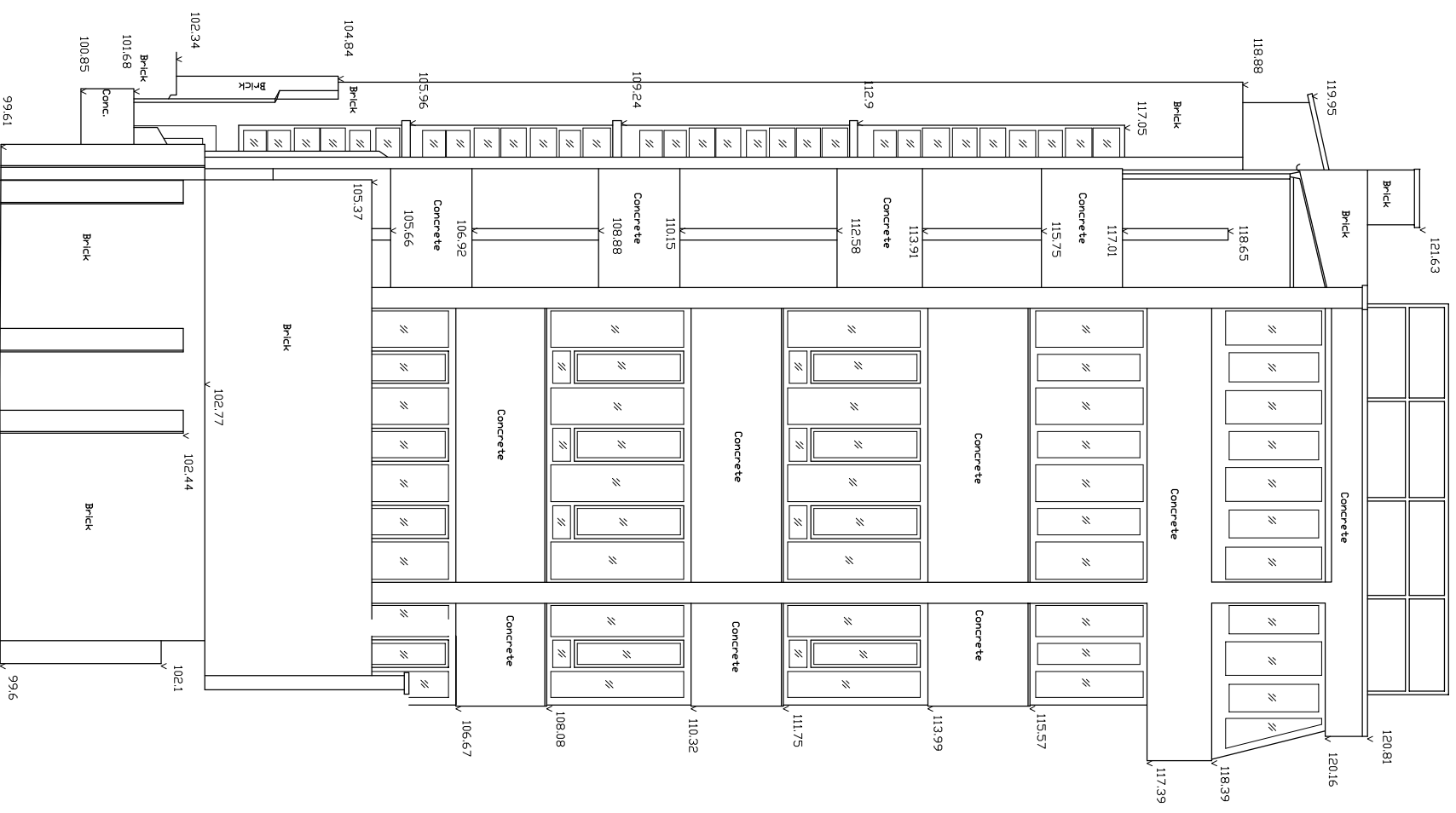
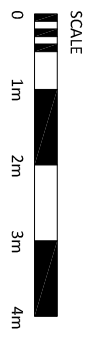
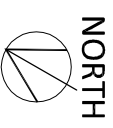


Note

Use figured dimensions only. All dimensions are to be checked on site and any discrepancies, errors or omissions are to be reported to the architect prior to commencement of works.



Rear elevation 1:100



**SCHEME DESIGN SUBJECT TO
 STRUCTURAL ENGINEER /SERVICES ENGINEER,
 & PLANNERS COMMENT**

FOR PLANNING

| A | 18.09.14 | roof railings added | mb |

project	25-26 Hampstead High Street		date	Aug 14	scale	1:100@A3	drawn by	mb	
drawing	Rear elevation as existing		dwg. no	FGF-108	rev	A	rev	rev	rev

BB PARTNERSHIP LTD

CHARTERED ARCHITECTS
 THE TRAFALGAR, 17 REMINGTON STREET, LONDON N1 8DH
 TEL . 020 7336 8555 FAX . 020 7336 8777
 e-mail . architect@bbpartnership.co.uk

© 2010 BB PARTNERSHIP LIMITED
 ALL RIGHTS RESERVED

. check all dimensions on site ©