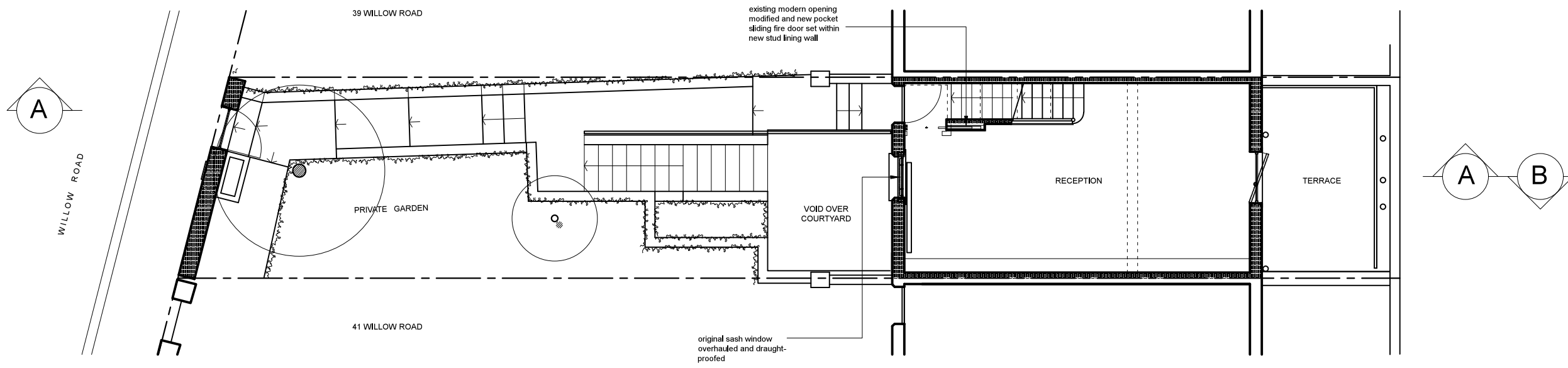
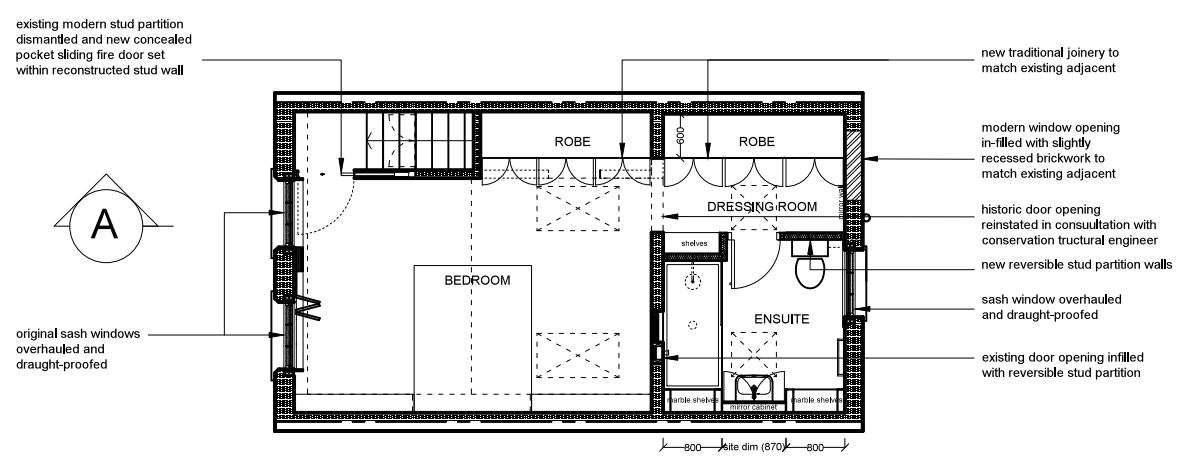


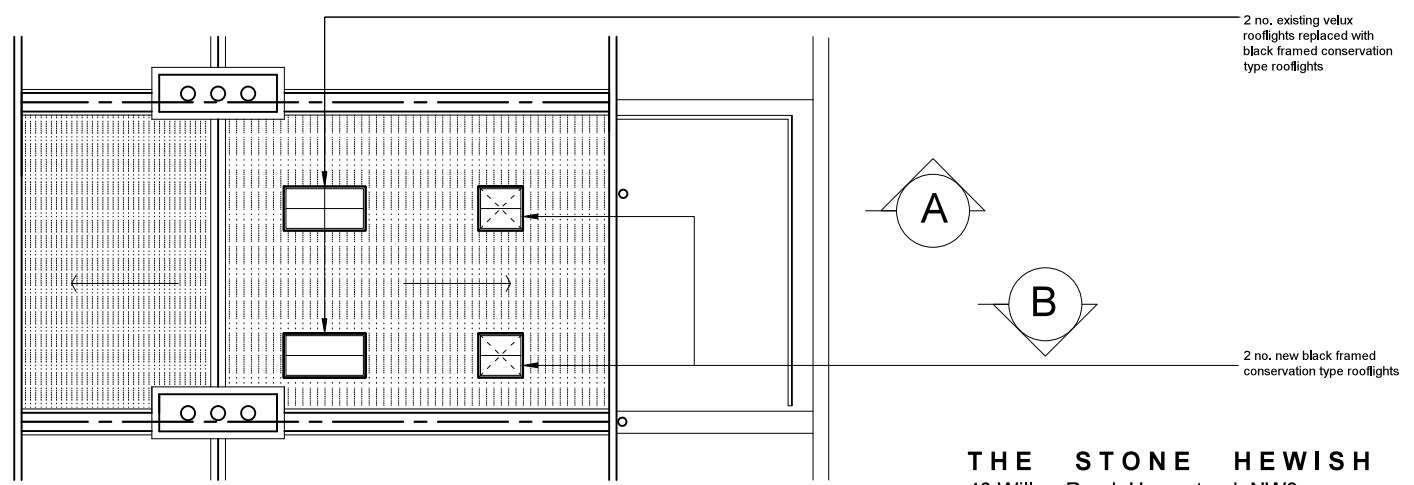
LOWER GROUND LEVEL FLOOR PLAN AS PROPOSED



RAISED GROUND LEVEL FLOOR PLAN AS EXISTING



FIRST FLOOR PLAN AS PROPOSED



ROOF PLAN AS PROPOSED

THE STONE HEWISH RESIDENCE
40 Willow Road, Hampstead, NW3

Dwg No. L01 - Rev C PLANS AS PROPOSED
SCALE: 1:100@A3
SEPTEMBER 2014
FOR PLANNING

Malcolm Fryer Architects Limited
23 Gerrard Road London N1 8AY
www.mfryer-architects.com