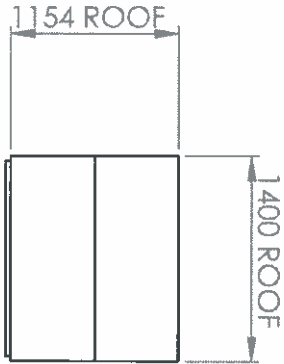


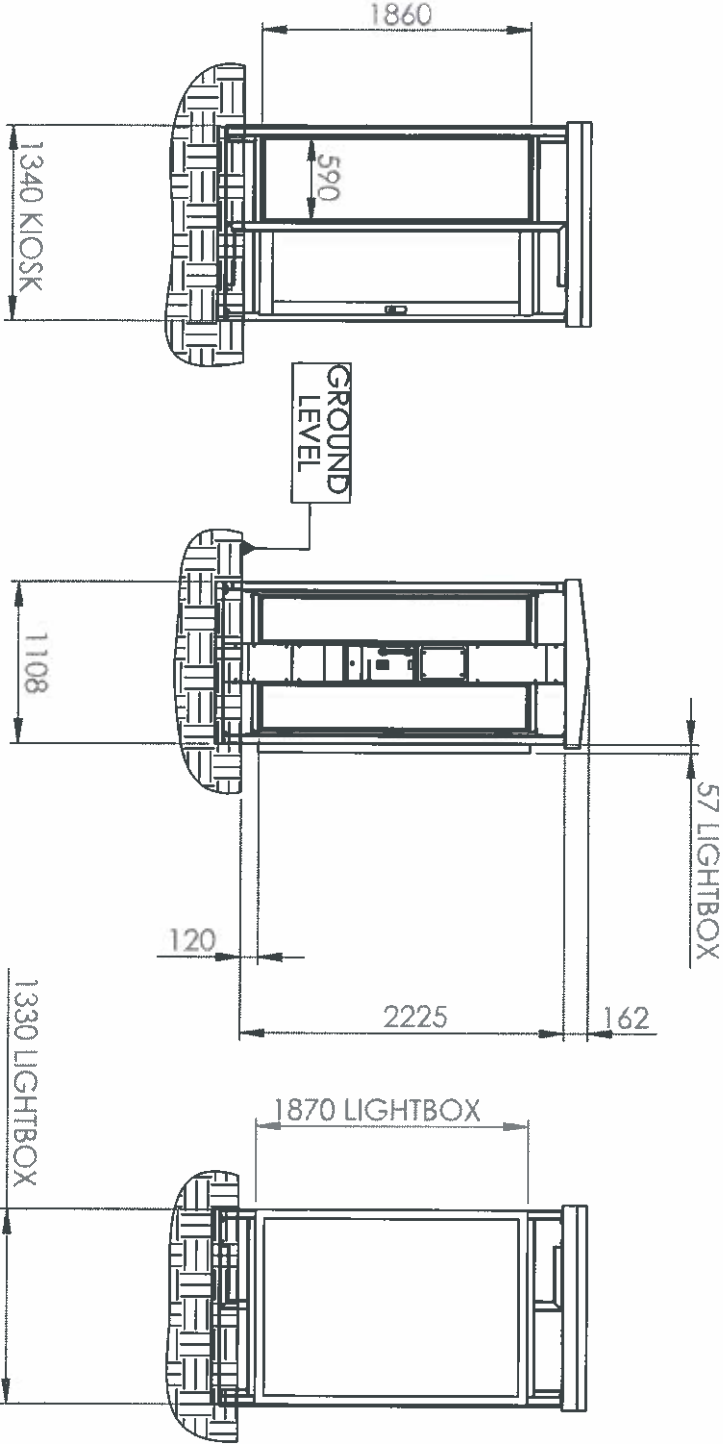
Infocus Telephone Kiosk With Advert Light Box

Material: Steel frame with toughened safety glass
Steel frame Finish:Black Polyester Powder Coat

Scale: 1:50
Sheet Size: A4



TOP VIEW



LEFT SIDE VIEW

FRONT

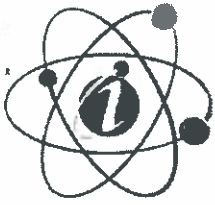
RIGHT SIDE VIEW



ADVERT DOOR OPEN



Infocus Public Networks



Infocus Public Networks Ltd

Scimitar Outdoor Ultra Slim 6 sheet – LED Light Box Unit

Overview: Aluminium base profile containing the LEDs and lighting panel with a hinging aluminium front cover profile. To change the poster, unlock the top profiles with the special security key provided, swing open the front cover and the poster can be changed via a snap profile. Opening is assisted by 2 gas stays. In between the base and front cover profiles there is a rubber seal making the unit waterproof.

Overall Dimensions: 1330mm (w) x 1870mm (h)

Poster Dimensions: 6 Sheet (1187mm x 1750mm PORTRAIT)

Depth: only 57mm deep.

Front panel: 5mm toughened glass, with an 80mm printed border.

Back panel: 1mm aluminium sheet, powder coated white on the inside for optimal light reflection.

Lighting panel: 10mm clear acrylic sheet, developed for edge lit applications.

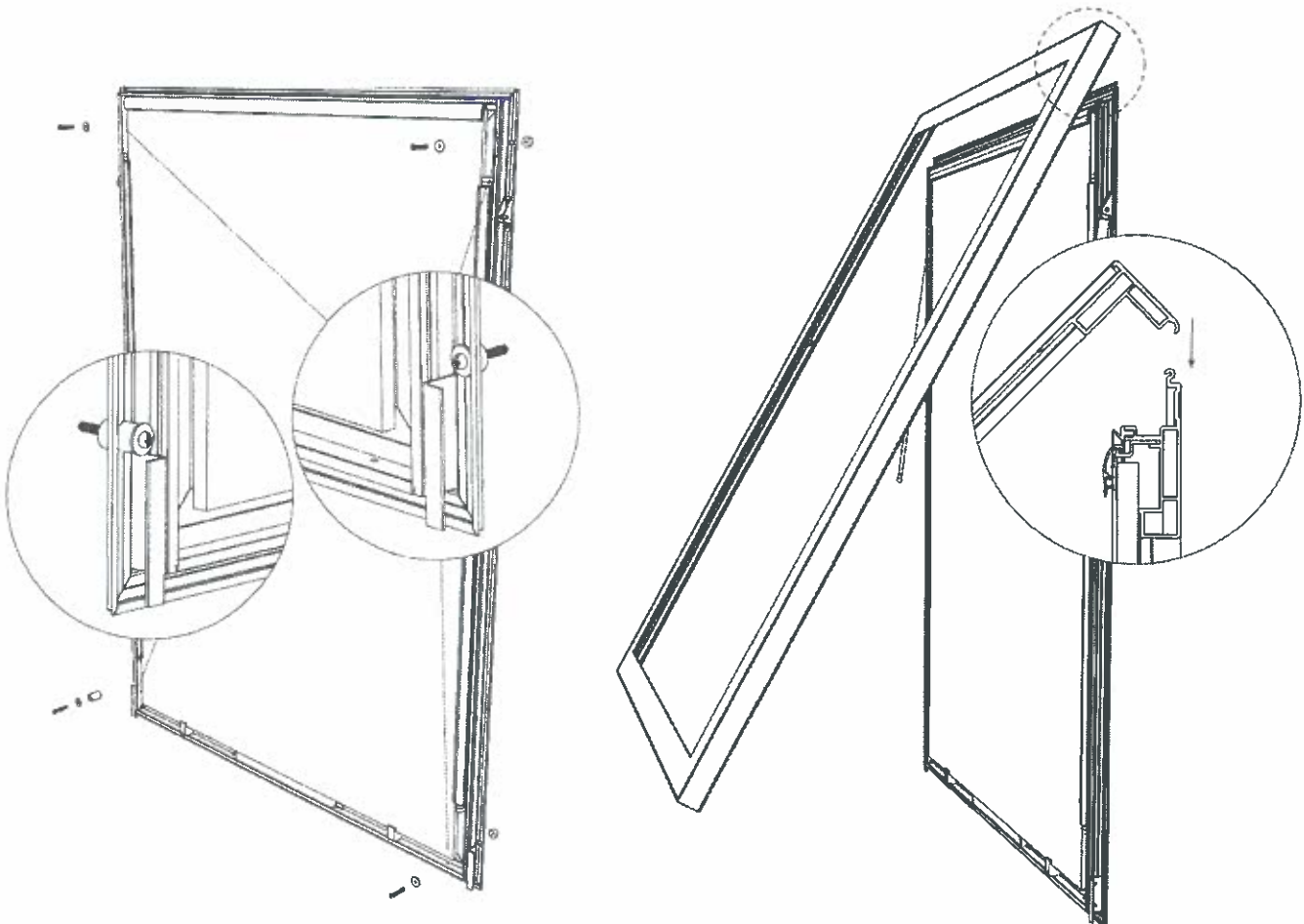
Colour: Painted to RAL 9005 Black.

Illumination: LED Illuminated

Certification: CE Certified.

IP Rating: IP66 - Waterproof. Totally protected against dust.

Protected against strong jets of water - limited ingress permitted



Registered Office: 1st Floor, 25 Greenhill Street, Stratford Upon Avon, Warwickshire, CV37 6LE
Company Registration: 6463216 Vat no. 930542054