



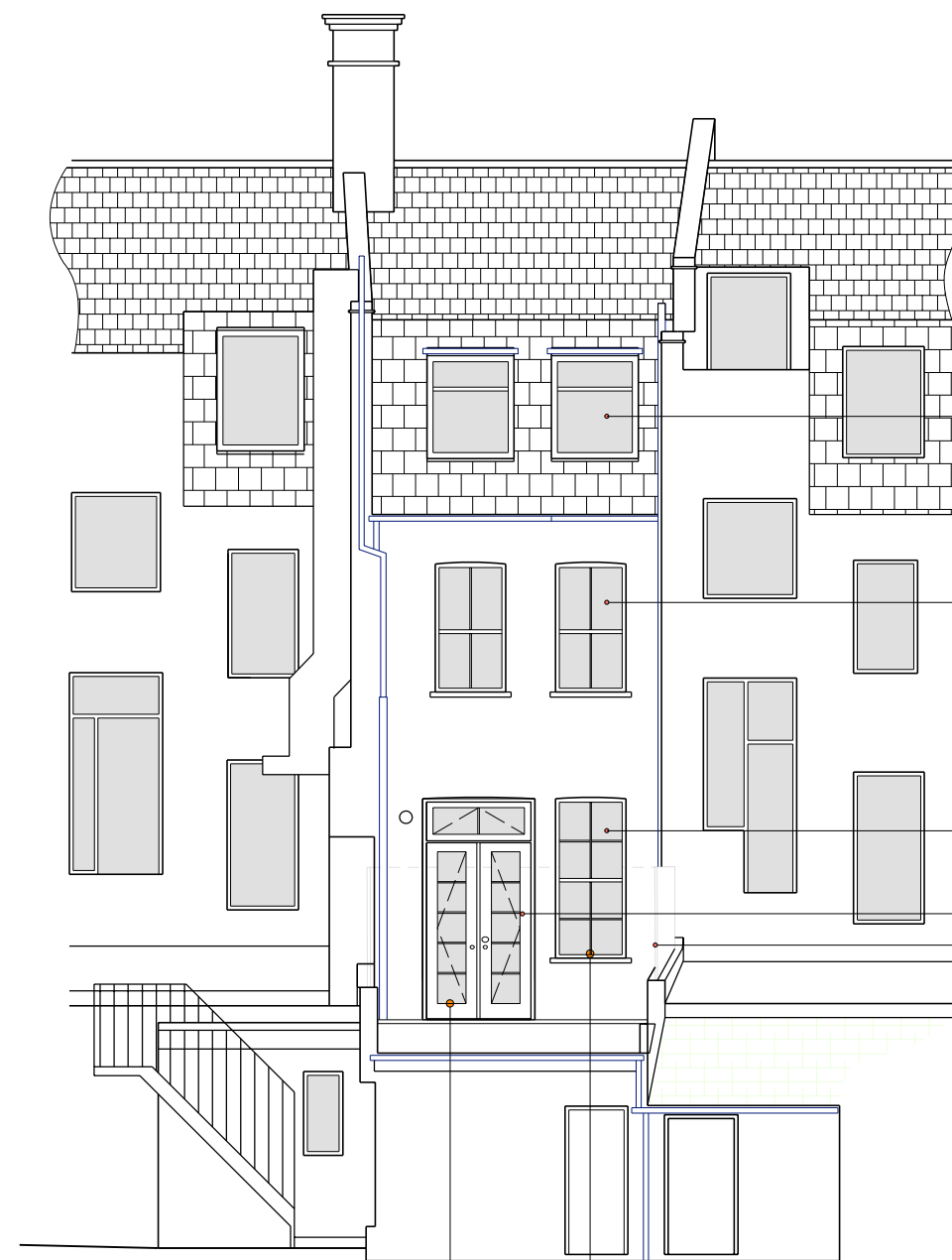
Fan lights to match  
No. 30

New timber frame  
shop front and doors.  
To be single glazed  
and painted black



+47.000 ▼

## 01 Front Elevation



## New timber to Match Existing

— New timber sash  
Window

— New timber sash  
Window

- New timber Doors
- New timber screening

02  
00 200

03  
00 200

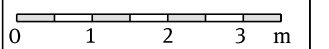
+47.000 ▼

## 02 Rear Elevation

## Notes

All dimensions must be checked and Papa Architects are to be informed of any discrepancies prior to construction. Any DWG's issued by PAPA architects are to be read in conjunction with the associated PDF versions. This drawing and any of the details therein remain the copyright of Papa Architects Ltd. All drawings prepared by Papa Architects are not to be used for any submissions, area schedule calculations or used by any other Persons or Companies other than Papa Architects Ltd unless written consent has been given by Papa Architects Ltd.

P02	24.09.14	Planning Amendment	NP
P01	18.08.14	Planning Amendment	NP
P00	16.07.14	Planning Submission	NP
Rev	Date	Reason For Issue	Chk



# PAPA

**Papa Architects Ltd.**  
222 Archway Road, Highgate,  
London N6 5AX  
Phone. +44(0)20 8348 8411  
Fax. +44 (0)20 8348 7411  
[www.papaarchitects.co.uk](http://www.papaarchitects.co.uk)

Client
--------

Mr & Mrs Khan

Address
31 Heath Street Hampstead London, NW3

Drawing title
Proposed Front & Rear Elevations

Project No. 1412	Date 17.06.14	Scale 1:100 @ A3
Drawing No. 00-110		Current Rev P02