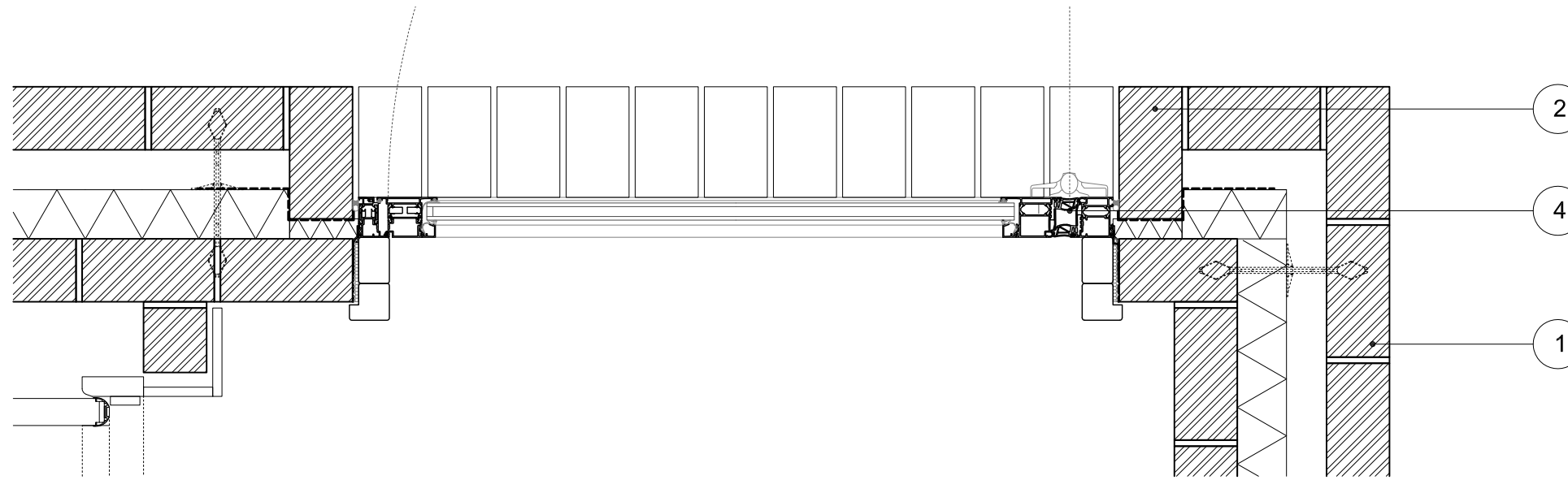


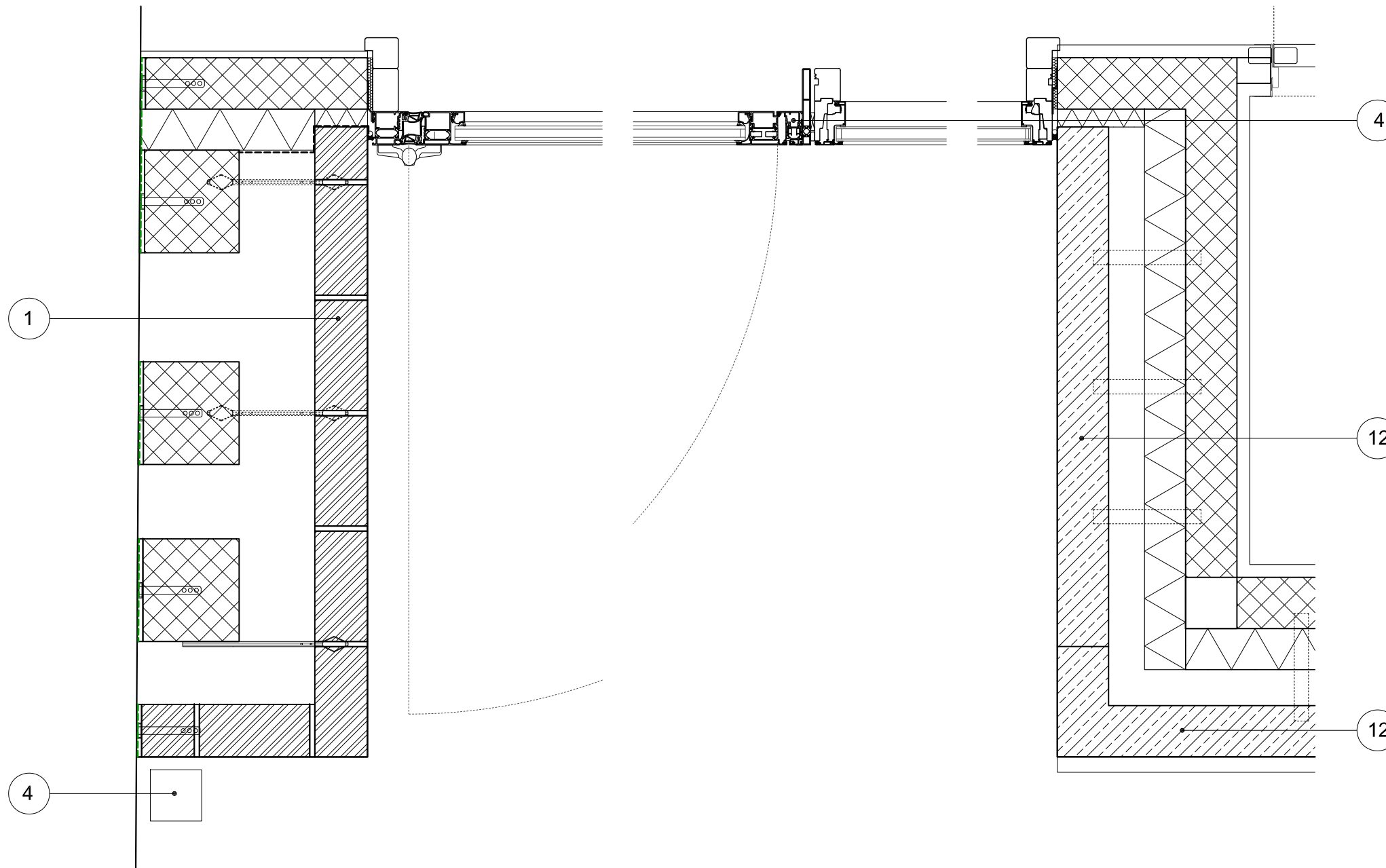
Do not scale from this drawing. Verify all dimensions on site. Drawing should be read in conjunction with information from all other design consultants and contractors. All drawings in digital format are for reference only, paper copies are available on request.

FOR PLANNING

Information only
© Maccreanor Lavington Ltd.



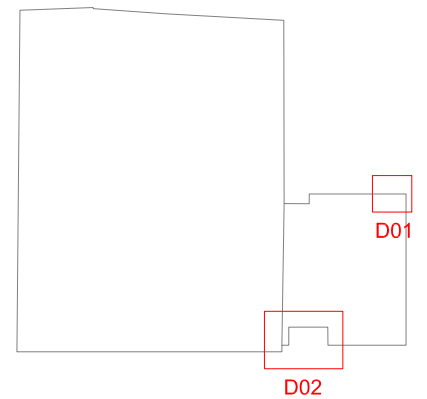
Detail 01 - External Door Plan - Playground Entrance



Detail 02 - External Door Plan - Front Entrance

MATERIALS KEY

- 1 Light facing brickwork. Freshfield Lane, Lindfield Yellow Multi Facing
- 2 Full brick window reveals.
- 3 Outward opening polyester powder coated Composite double glazed windows. Colour RAL 7003.
- 4 Polyester powder coated aluminium framed outwards opening double glazed doors. Colour RAL 7003.
- 5 Polyester powder coated aluminium sill. Colour RAL 7003.
- 6 Polyester powder coated aluminium down pipe. Colour RAL 7012M.
- 7 Polyester powder coated aluminium gutter. colour RAL 7012M.
- 8 Polyester powder coated steel railing, colour tbc.
- 9 Polyester powder coated steel gate, colour tbc.
- 10 Metal fencing and playground gate to match existing.
- 11 Reinstatement of window to match existing. White uPVC
- 12 Precast concrete signage panel (Portland stone finish).
- 13 Polyester powder coated aluminium roof lights Colour RAL 7043 to match zinc roofing
- 14 Extract vent to vertical roof section. Colour RAL 7043
- 15 Standing Seam Zinc Roofing. Colour Graphite Grey
- 16 Precast lintel brick soffit.
- 17 Air Brick. Colour buff
- 18 Polyester powder coated aluminium spandrel panel. Flush with window system. Colour RAL 7003.
- 19 Precast concrete Sill (Portland stone finish).



Issued for Planning Condition Discharge MH 04-09-14

Rev Details Drwn Date

369 Holy Trinity + St Silas Primary School

Client: Holy Trinity and St Silas Primary School

Title: External Envelope Details

External Door Plans

Scale: 1:10 @ A3

Date: 29-08-2014

Drawn: LB

MLUK / 369 / P / 404

MaccreanorLavington

3rd Floor
19-21 Nile Street
London N1 7LL

t +44(0)207 336 73 53
f +44(0)207 336 76 55
e uk@ml-architects.com