

This drawing is the copyright of Axiom Architects.

It is for planning application purposes only & may not be reproduced in whole or in part without permission. Drawings lodged for planning approval may be reproduced by the Planning Authority in accordance with the Copyright (Material Open to Public Inspection) (Marking of Copies of Plans and Drawings) Order 1990 and must carry the relevant copyright restriction note.

NB. These proposals are based on Plan Survey Information provided by Promission Chartered Surveyors.

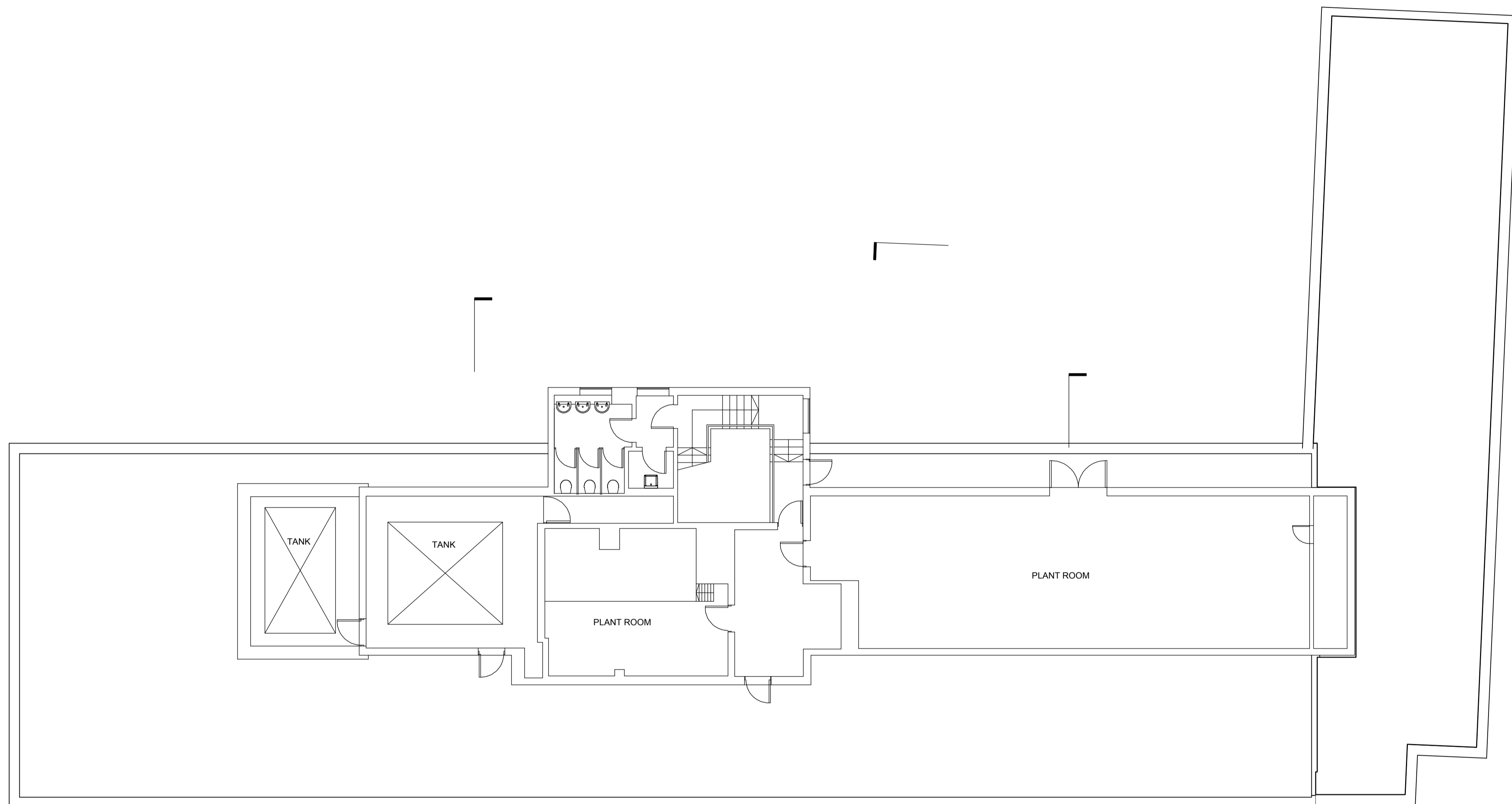
Not for construction use. Do not scale from drawing.

30 M

20

10

0



Rev	Date	Description	By
D	03/06/13	Section References added.	LB
C	22/04/13	Client details amended.	LB
B	01/03/13	North Arrow and Scale bar added.	LB
A	15/11/12	Address Updated	LB

Southerham House  
Southerham  
Lewes  
East Sussex  
BN8 6JN

Tel 01273 479269  
Fax 01273 483060  
www.axiomarchitects.co.uk

**AXIOM**  
ARCHITECTS

Client  
**TORRINGTON PLACE LTD & WHITBREAD GROUP PLC**

Project  
**BROOK HOUSE**  
2-16 TORRINGTON PLACE  
LONDON

Drawing  
**SIXTH FLOOR**  
**AS EXISTING**

Scale	Status	Date	Drawn	Checked
1:100@A1	PLANNING	07/11/12	LB	

Drawing No. **3114/P/006** Revision **D**