

East elevation

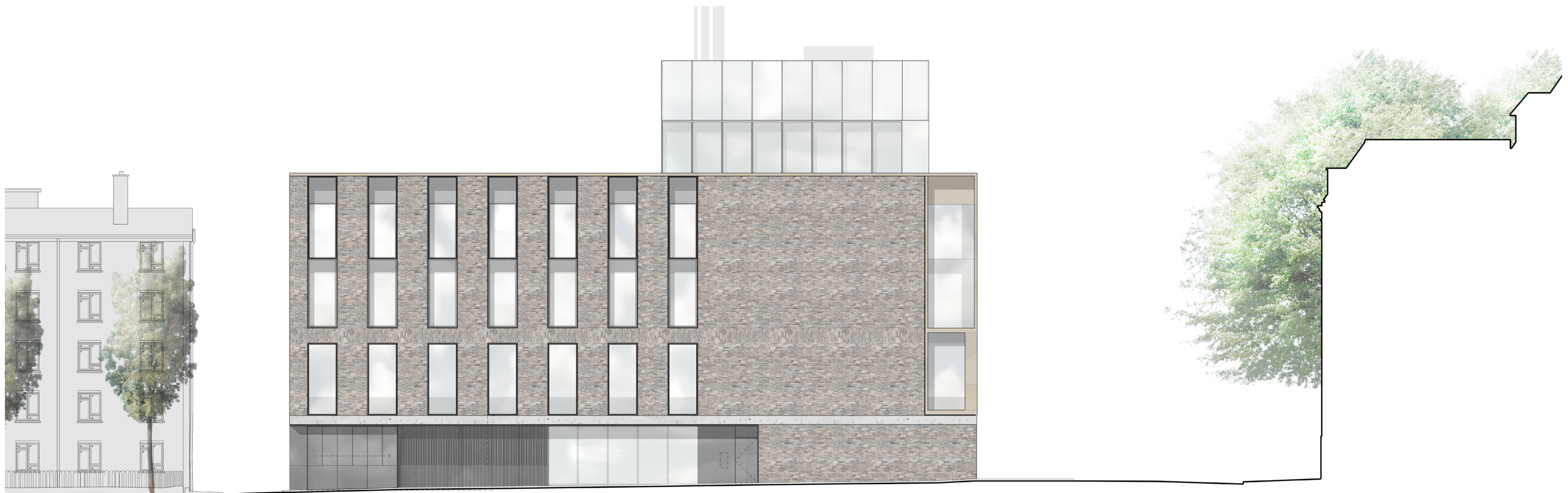
The east elevation has been designed as a more solid façade than the north elevation to respond to the residential nature of Millman Street, with high quality brickwork as the primary material.

The carved base of the north is also expressed on this elevation by maintaining the concrete datum at the top of the ground floor. The façade to the seminar room is formed from a flush glazed curtain wall with full height glazing, which also allows natural light into the laboratory spaces on the lower ground floor. The curtain walling sits flush with the surrounding metal cladding but altogether is recessed from the building line, maintaining the strong building form whilst presenting a large area of animated frontage. The internal design of the seminar room will also provide further visual links into the main atrium space, and hence increasing the interest of this street frontage. The metal cladding at either side of the glazing will be articulated to provide a uniform design and will contain extract louvres, escape doors and the entrance to CRRDC's delivery area.

On the levels above, the windows to the workspaces follow the regular rhythm established on the north elevation. The first floor glazing is flush with the adjacent brickwork, whereas the glazing elements to the second and third floor are articulated as double height. Additional metal detailing is introduced to the third floor glazing, lining the brick reveals.

At the Guilford Street end of the elevation the terracotta screen of the north is expressed with full height flush glazing behind. This gesture eases the transition from the open public façade to a more closed one, relating to the domestic scaled windows of Millman Street. To provide a visual continuity, the terracotta is held by a continuous coping piece stitching together all elevations, in a similar fashion as the concrete band at ground floor.

The upper volume of the GMP is located at the north end of the elevation and is set back from the façade by 1.1m to reduce the scale of the building from street level. The cladding of both fourth and fifth floors will follow the same articulation and detailing as on the north elevation.



Proposed east elevation