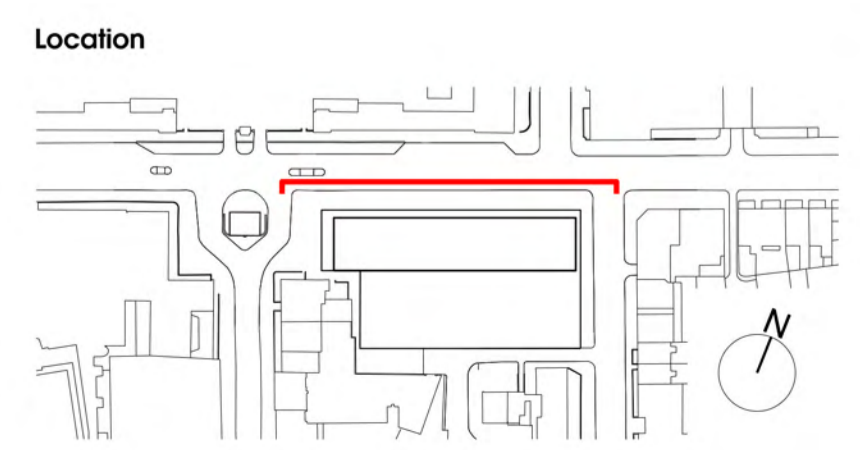


Notes
 Contractor to check all dimensions on site. Do not scale from this drawing. Stanton Williams to be advised of any variation between the drawings and site conditions.
 © Stanton Williams. All rights described in Chapter IV of the Copyright, Designers and Patents Act 1998 have been asserted.
 To be read in conjunction with the specification and all relevant drawings.

- Key:**
1. External facing brickwork
 2. Precast concrete fascia
 3. Terracotta cladding
 4. Terracotta fins
 5. Flush curtain walling
 6. Curtain walling with projecting mullions
 7. Metal cladding

Revision	Date	Description
0	05.09.14	Issued for Planning



Stanton Williams
 36 Graham Street
 London N1 8GJ
 Phone +44 (0)20 7880 6400
 Email 464@stantonwilliams.com
 www.stantonwilliams.com



Project
 Centre for Research into Rare Disease in Children
 at Great Ormond Street Hospital

Drawing Title
 Proposed
 General Arrangement
 North Elevation

Date	Scale @ A1 (A3)	Status	Project No.	Drawing No.	Revision
05.09.2014	1:100 (1:200)	Planning	464	PL_220	0
Drawn	Checked	Approved			
EM	KI	GH			



Notes
Contractor to check all dimensions on site. Do not scale from this drawing. Stanton Williams to be advised of any variation between the drawings and site conditions.

© Stanton Williams
All rights described in Chapter IV of the Copyright, Designers and Patents Act 1998 have been asserted.

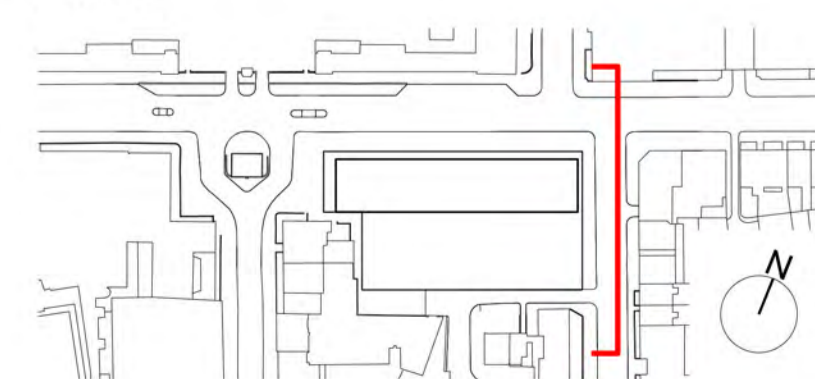
To be read in conjunction with the specification and all relevant drawings.

Key:

1. External facing brickwork
2. Precast concrete fascia
3. Terracotta cladding
4. Terracotta fins
5. Flush curtain walling
6. Flush glazing
7. Recessed metal framed glazing
8. Metal cladding
9. Curtain walling with projecting mullions
10. Metal louvres

Revision	Date	Description
0	05.09.14	Issued for Planning

Location



Stanton Williams
36 Graham Street
London N1 8GJ
Phone +44 (0)20 7880 6400
Email 464@stantonwilliams.com
www.stantonwilliams.com

**STANTON
WILLIAMS**

Project
Centre for Research into Rare Disease in Children
at Great Ormond Street Hospital

Drawing Title
Proposed
General Arrangement
East Elevation

Date	Scale @ A1 (A3)	Status	Project No.	Drawing No.	Revision
05.09.2014	1:100 (1:200)	Planning	464	PL_221	0
Drawn EM	Checked KI	Approved GH			



Notes
 Contractor to check all dimensions on site. Do not scale from this drawing. Stanton Williams to be advised of any variation between the drawings and site conditions.

© Stanton Williams.
 All rights described in Chapter IV of the Copyright, Designers and Patents Act 1998 have been asserted.

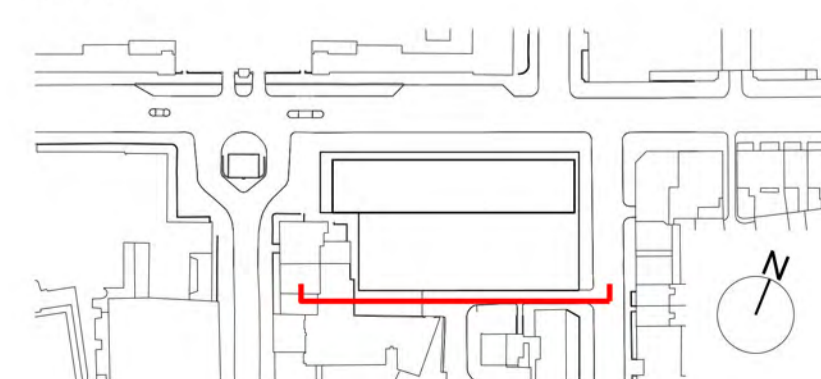
To be read in conjunction with the specification and all relevant drawings.

Key:

1. External facing brickwork
2. Precast concrete fascia
3. Terracotta cladding
4. Flush curtain walling
5. Flush glazing
6. Recessed metal framed glazing
7. Metal cladding
8. Curtain walling with projecting mullions
9. Metal louvres

Revision	Date	Description
0	05.09.14	Issued for Planning

Location



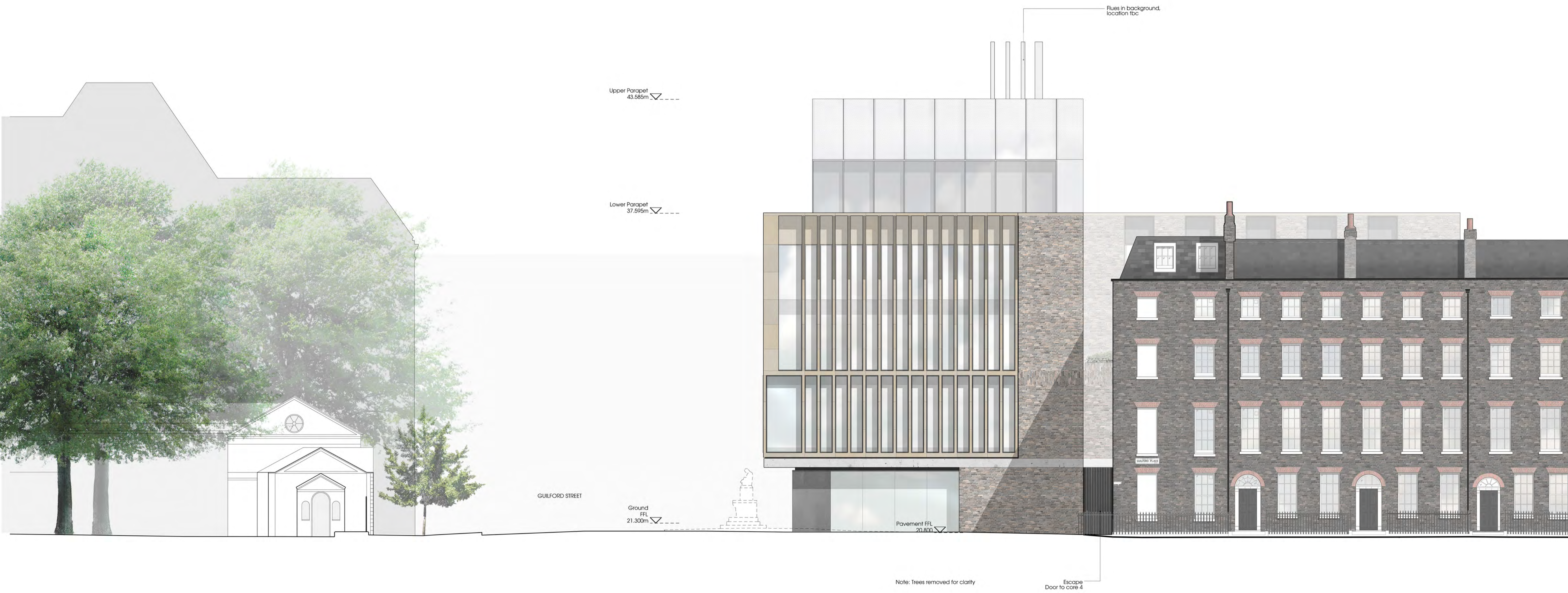
Stanton Williams
 36 Graham Street
 London N1 8GJ
 Phone +44 (0)20 7880 6400
 Email 464@stantonwilliams.com
 www.stantonwilliams.com

**STANTON
 WILLIAMS**

Project
 Centre for Research into Rare Disease in Children
 at Great Ormond Street Hospital

Drawing Title
 Proposed
 General Arrangement
 South Elevation

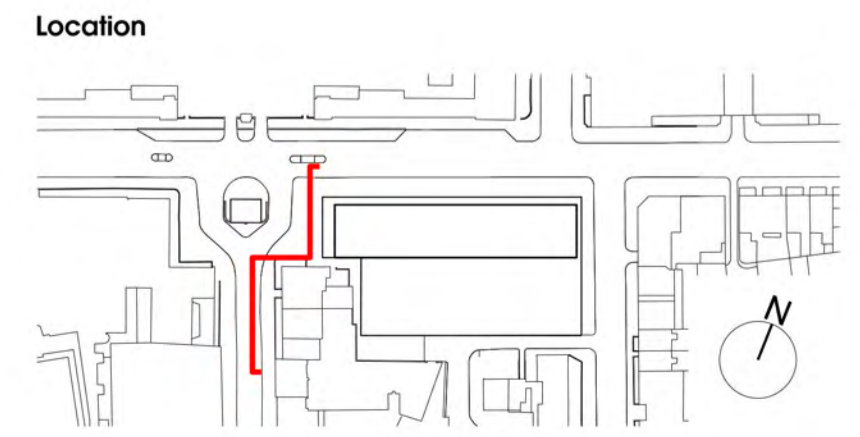
Date	Scale @ A1 (A3)	Status	Project No.	Drawing No.	Revision
05.09.14	1:100 (1:200)	Planning	464	PL_222	0
Drawn LO	Checked KI	Approved GH			



Notes
 Contractor to check all dimensions on site. Do not scale from this drawing. Stanton Williams to be advised of any variation between the drawings and site conditions.

© Stanton Williams
 All rights described in Chapter IV of the Copyright, Designers and Patents Act 1998 have been asserted.
 To be read in conjunction with the specification and all relevant drawings.

Revision	Date	Description
0	05.09.14	Issued for Planning



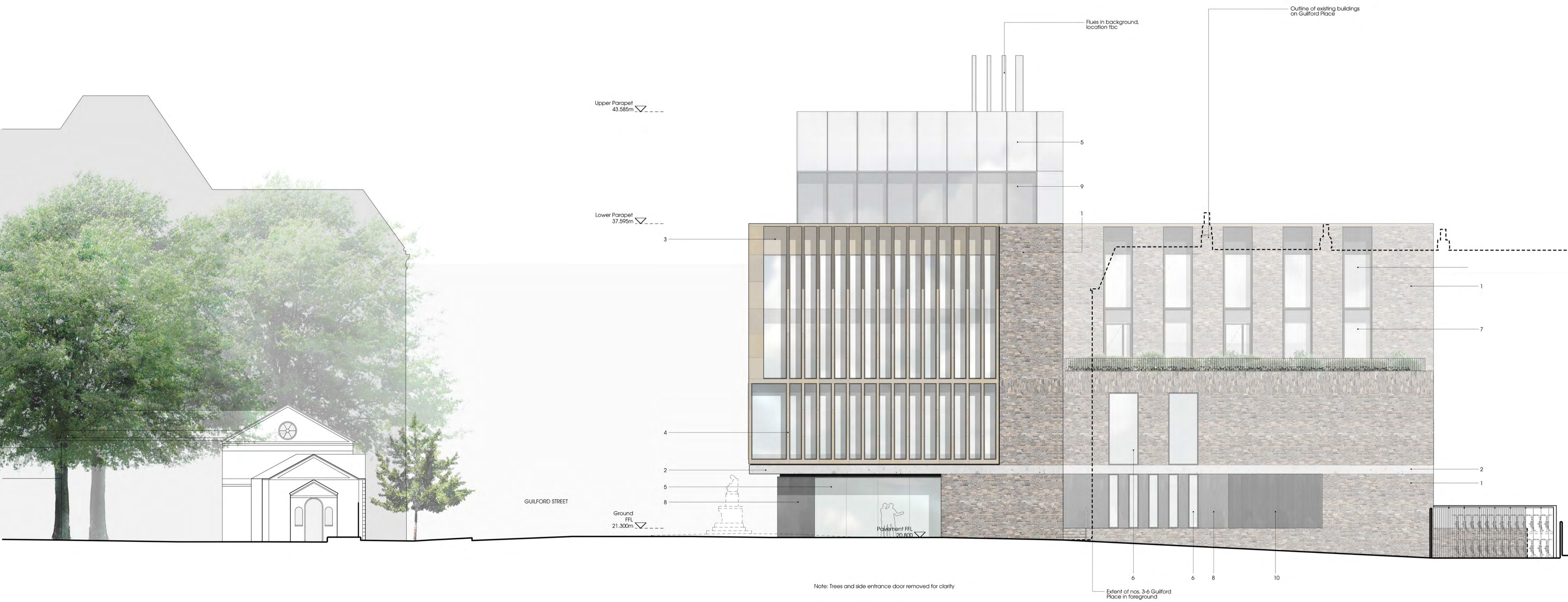
Stanton Williams
 36 Graham Street
 London N1 8GJ
 Phone +44 (0)20 7880 6400
 Email 464@stantonwilliams.com
 www.stantonwilliams.com

STANTON WILLIAMS

Project
 Centre for Research into Rare Disease in Children
 at Great Ormond Street Hospital

Drawing Title
 Proposed
 General Arrangement
 West Elevation

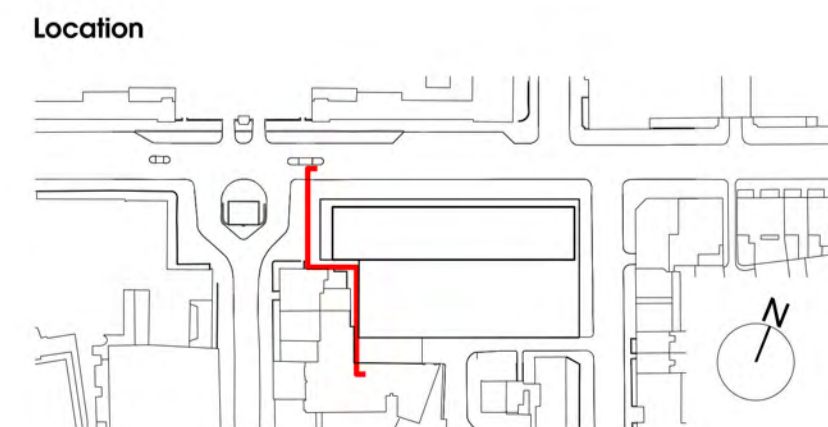
Date	Scale @ A1 (A3)	Status	Project No.	Drawing No.	Revision
05.09.2014	1:100 (1:200)	Planning	464	PL_223	0
Drawn	Checked	Approved			
LO	KI	GH			



Notes
 Contractor to check all dimensions on site. Do not scale from this drawing. Stanton Williams to be advised of any variation between the drawings and site conditions.
 © Stanton Williams. All rights described in Chapter IV of the Copyright, Designers and Patents Act 1998 have been asserted.
 To be read in conjunction with the specification and all relevant drawings.

- Key:**
1. External facing brickwork
 2. Precast concrete fascia
 3. Terracotta cladding
 4. Terracotta fins
 5. Flush curtain walling
 6. Flush glazing
 7. Recessed metal framed glazing
 8. Metal cladding
 9. Curtain walling with projecting mullions
 10. Metal louvres

Revision	Date	Description
0	05.09.14	Issued for Planning



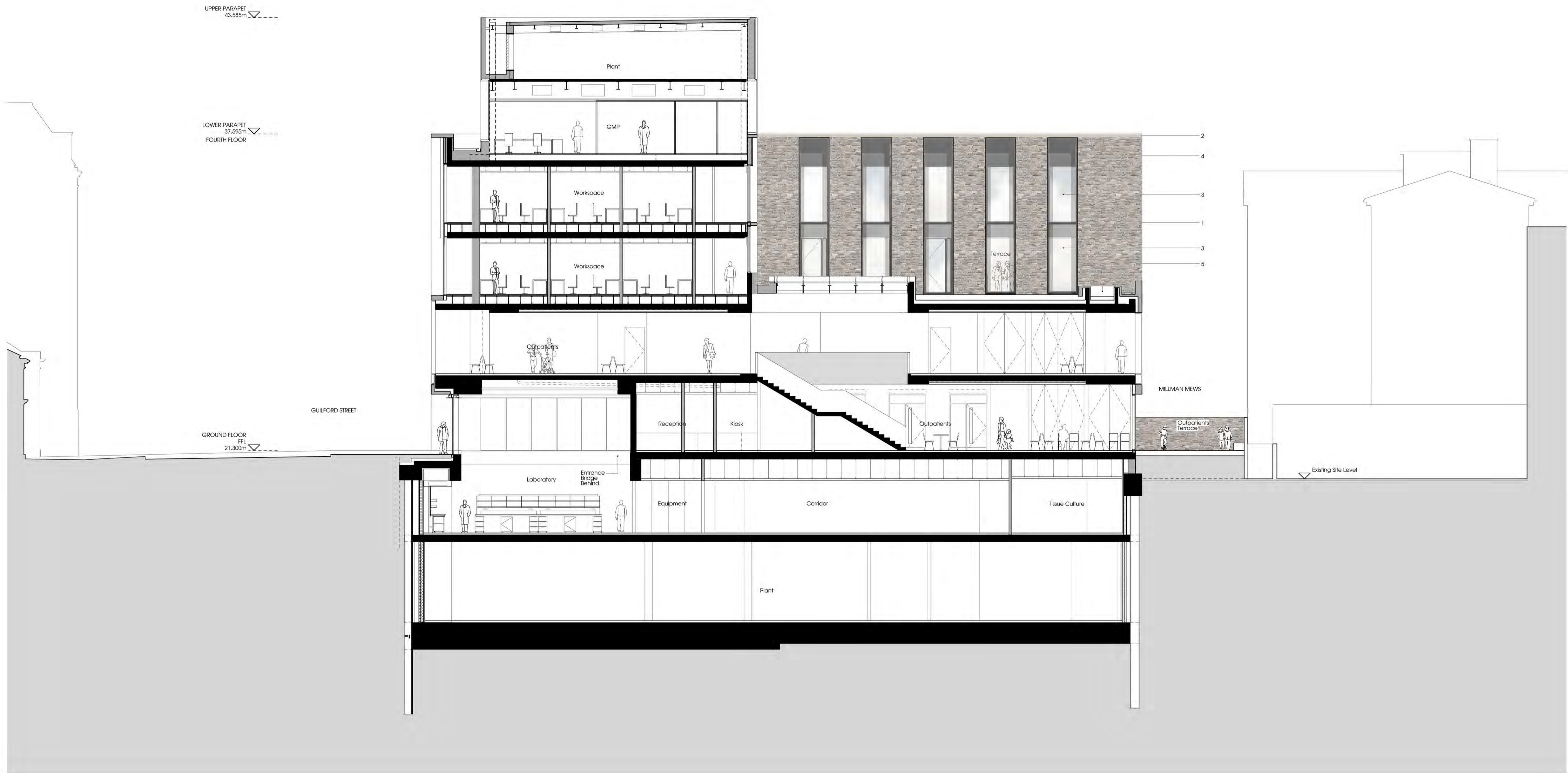
Stanton Williams
 36 Graham Street
 London N1 8GJ
 Phone +44 (0)20 7880 6400
 Email 464@stantonwilliams.com
 www.stantonwilliams.com

STANTON WILLIAMS

Project
 Centre for Research into Rare Disease in Children at Great Ormond Street Hospital

Drawing Title
 Proposed General Arrangement West Elevation (terraces removed)

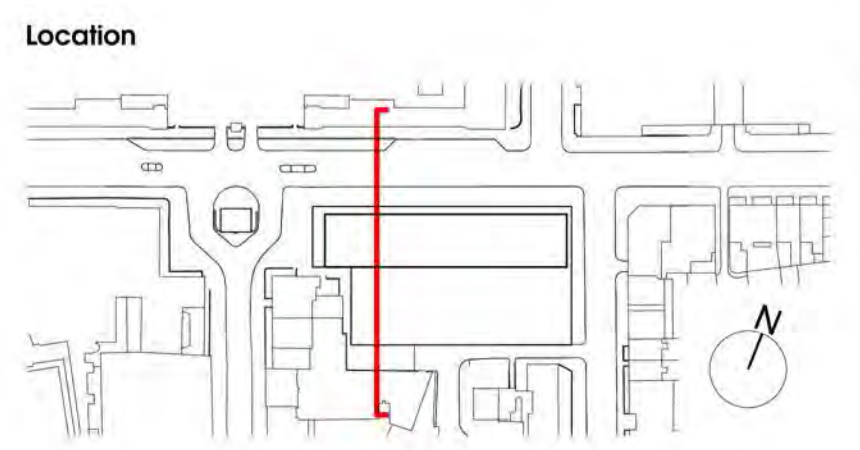
Date	Scale @ A1 (A3)	Status	Project No.	Drawing No.	Revision
05.09.2014	1:100 (1:200)	Planning	464	PL_224	0
Drawn LO	Checked KI	Approved GH			



Notes
 Contractor to check all dimensions on site. Do not scale from this drawing. Stanton Williams to be advised of any variation between the drawings and site conditions.
 © Stanton Williams. All rights described in Chapter IV of the Copyright, Designers and Patents Act 1998 have been asserted.
 To be read in conjunction with the specification and all relevant drawings.

- Key:**
1. External facing brickwork
 2. Terracotta cladding
 3. Recessed metal framed glazing
 4. Metal cladding
 5. Raised planter

Revision	Date	Description
0	05.09.14	Issued for Planning



Stanton Williams
 30 Graham Street
 London N1 8GJ
 Phone +44 (0)20 7880 6400
 Email 464@stantonwilliams.com
 www.stantonwilliams.com

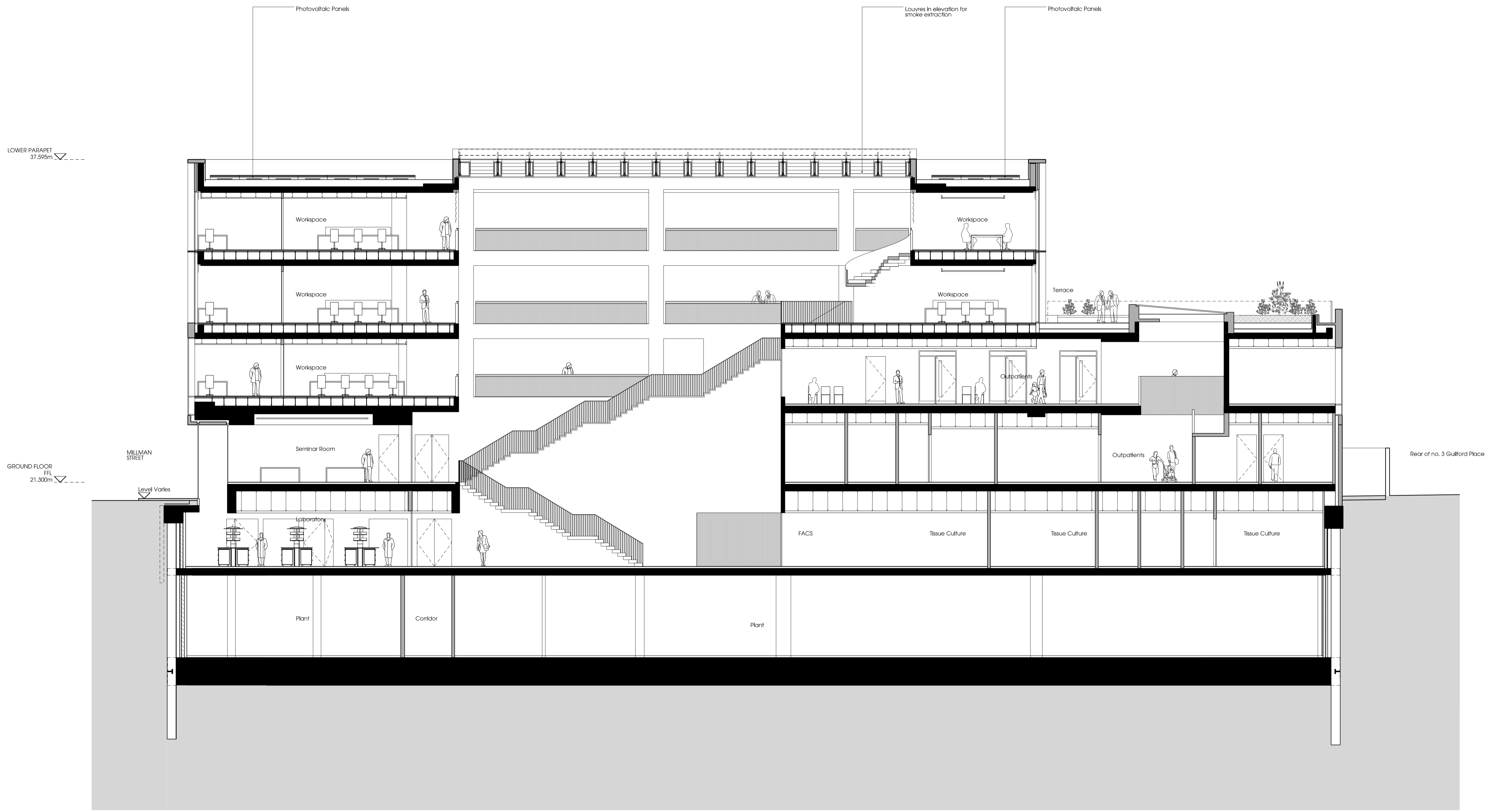
STANTON WILLIAMS

Project
 Centre for Research into Rare Disease in Children
 at Great Ormond Street Hospital

Drawing Title
 Proposed
 General Arrangement
 Section AA

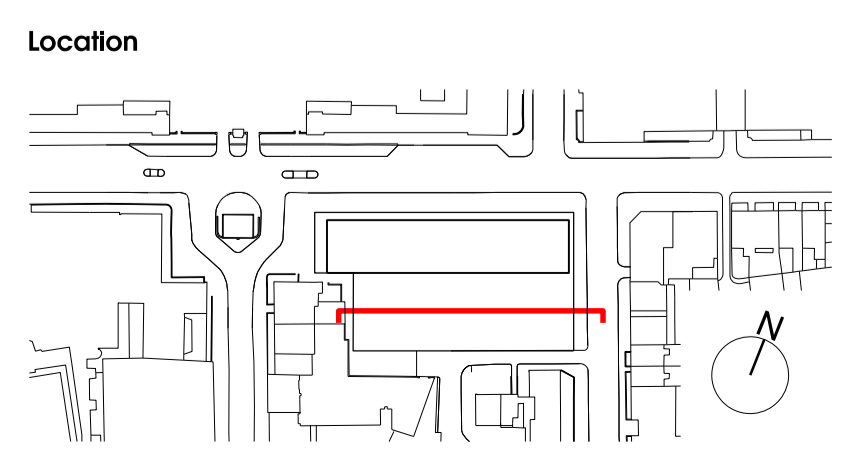
Date	Scale @ A1(A3)	Status
05.09.2014	1:100 (1:200)	Planning
Drawn	Checked	Approved
EM	KI	GH

Project No.	Drawing No.	Revision
464	PL-250	0



Notes
 Contractor to check all dimensions on site. Do not scale from this drawing. Stanton Williams to be advised of any variation between the drawings and site conditions.
 © Stanton Williams.
 All rights described in Chapter IV of the Copyright, Designers and Patents Act 1998 have been asserted.
 To be read in conjunction with the specification and all relevant drawings.

Revision	Date	Description
0	05.09.14	Issued for Planning



Stanton Williams
 36 Graham Street
 London N1 8GJ
 Phone +44 (0)20 7880 6400
 Email 464@stantonwilliams.com
 www.stantonwilliams.com



Date	Scale @ A1(A3)	Status	Project No.	Drawing No.	Revision
05.09.2014	1:100 (1:200)	Planning	464	PL-252	0

Drawn	Checked	Approved
CA	KI	GH

Drawing Title
 Proposed
 General Arrangement
 Section CC

