





Notes

Contractor to check all dimensions on site. Do not scale from this drawing. Stanton Williams to be advised of any variation between the drawings and site conditions.

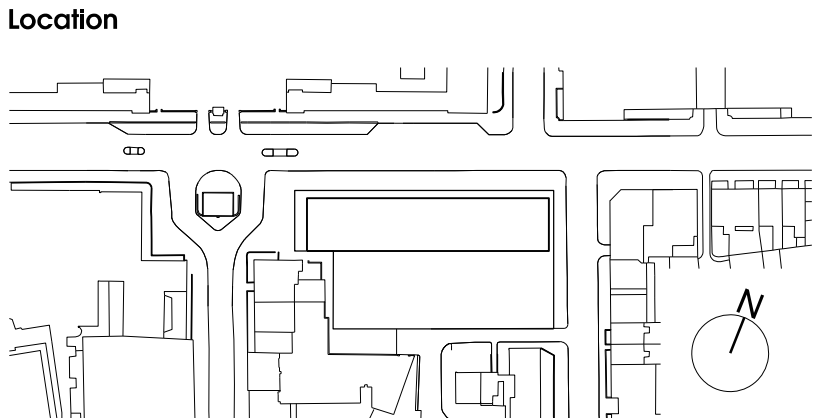
© Stanton Williams.
All rights described in Chapter IV of the Copyright, Designers and Patents Act 1998 have been asserted.

To be read in conjunction with the specification and all relevant drawings.

- Key**
- Equipment / Support Space
 - Laboratory
 - Entrance / Communal Facilities
 - Plant
 - Circulation

Services

Revision	Date	Description
0	05.09.14	Issued for Planning



Stanton Williams
36 Graham Street
London N1 8GJ
Phone +44 (0)20 7880 6400
Email 464@stantonwilliams.com
www.stantonwilliams.com

STANTON
WILLIAMS

Project
Centre for Research into Rare Disease in Children
at Great Ormond Street Hospital

Drawing Title
Proposed
General Arrangement
Lower Ground Floor Plan

Date	Scale @ A1(A3)	Status	Project No.	Drawing No.	Revision
05.09.2014	1:100 (1:200)	Planning	464	PL-201	0
Drawn CA	Checked KI	Approved GH			



Notes

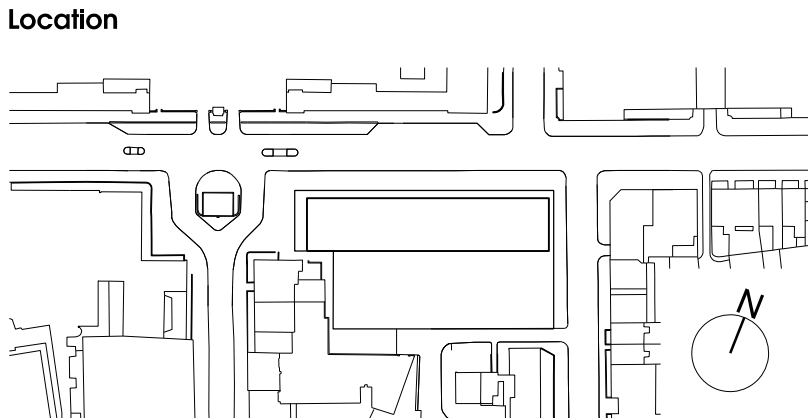
Contractor to check all dimensions on site. Do not scale from this drawing. Stanton Williams to be advised of any variation between the drawings and site conditions.

© Stanton Williams.
All rights described in Chapter IV of the Copyright, Designers and Patents Act 1998 have been asserted.

To be read in conjunction with the specification and all relevant drawings.

Key	
	Equipment / Support Space
	Entrance / Communal Facilities
	Outpatients
	Plant
	Circulation
	Services

Revision	Date	Description
0	05.09.14	Issued for Planning



Stanton Williams
36 Graham Street
London N1 8GJ
Phone +44 (0)20 7880 6400
Email 464@stantonwilliams.com
www.stantonwilliams.com

STANTON
WILLIAMS

Project
Centre for Research into Rare Disease in Children
at Great Ormond Street Hospital

Drawing Title
Proposed
General Arrangement
Ground Floor Plan

Date	Scale @ A1(A3)	Status
05.09.2014	1:100 (1:200)	Planning
Drawn	Checked	Approved
CA	KI	GH

Project No.	Drawing No.	Revision
464	PL-202	0



Notes

Contractor to check all dimensions on site. Do not scale from this drawing. Stanton Williams to be advised of any variation between the drawings and site conditions.

© Stanton Williams.
All rights described in Chapter IV of the Copyright, Designers and Patents Act 1998 have been asserted.

To be read in conjunction with the specification and all relevant drawings.

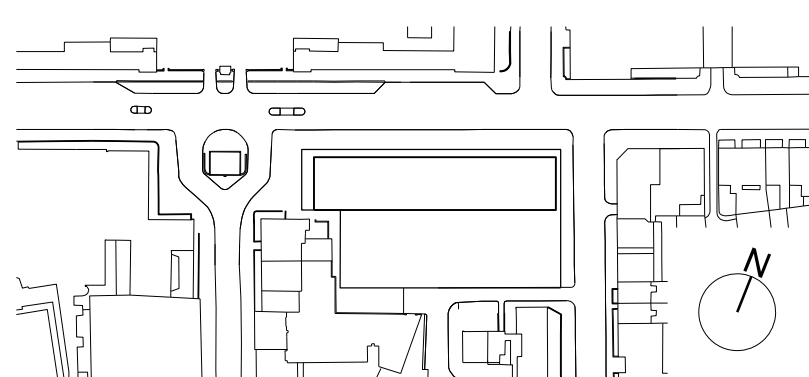
Key

- Entrance / Community Facilities
- Outpatients
- Workspace
- Circulation
- Services

Revision

Revision	Date	Description
0	05.09.14	Issued for Planning

Location



Stanton Williams
36 Graham Street
London N1 8GJ
Phone +44 (0)20 7880 6400
Email 464@stantonwilliams.com
www.stantonwilliams.com

STANTON
WILLIAMS

Project

Centre for Research into Rare Disease in Children
at Great Ormond Street Hospital

Drawing Title

Proposed
General Arrangement
First Floor Plan

Date

05.09.2014

Scale @ A1(A3)

1:100 (1:200)

Status

Planning

Drawn

CA

Checked

KI

Approved

GH

Project No.

464

Drawing No.

PL-203

Revision

0



Notes

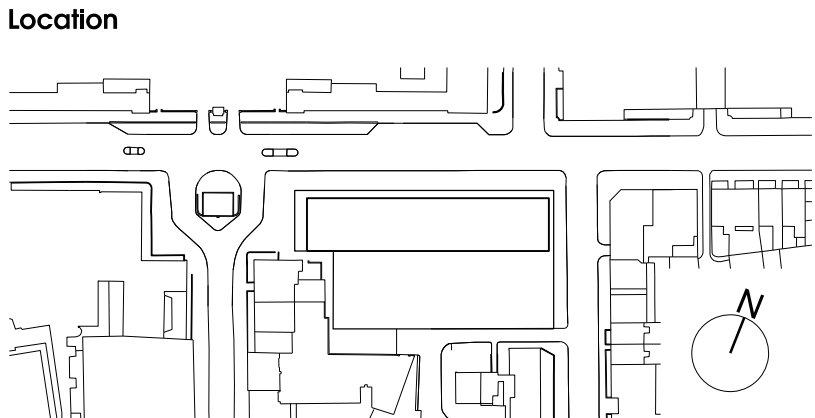
Contractor to check all dimensions on site. Do not scale from this drawing. Stanton Williams to be advised of any variation between the drawings and site conditions.

© Stanton Williams.
All rights described in Chapter IV of the Copyright, Designers and Patents Act 1998 have been asserted.

To be read in conjunction with the specification and all relevant drawings.

- Key**
- Entrance / Communal Facilities
 - Workspace
 - Circulation
 - Services

Revision	Date	Description
0	05.09.14	Issued for Planning



Stanton Williams
36 Graham Street
London N1 8GJ
Phone +44 (0)20 7880 6400
Email 464@stantonwilliams.com
www.stantonwilliams.com

STANTON
WILLIAMS

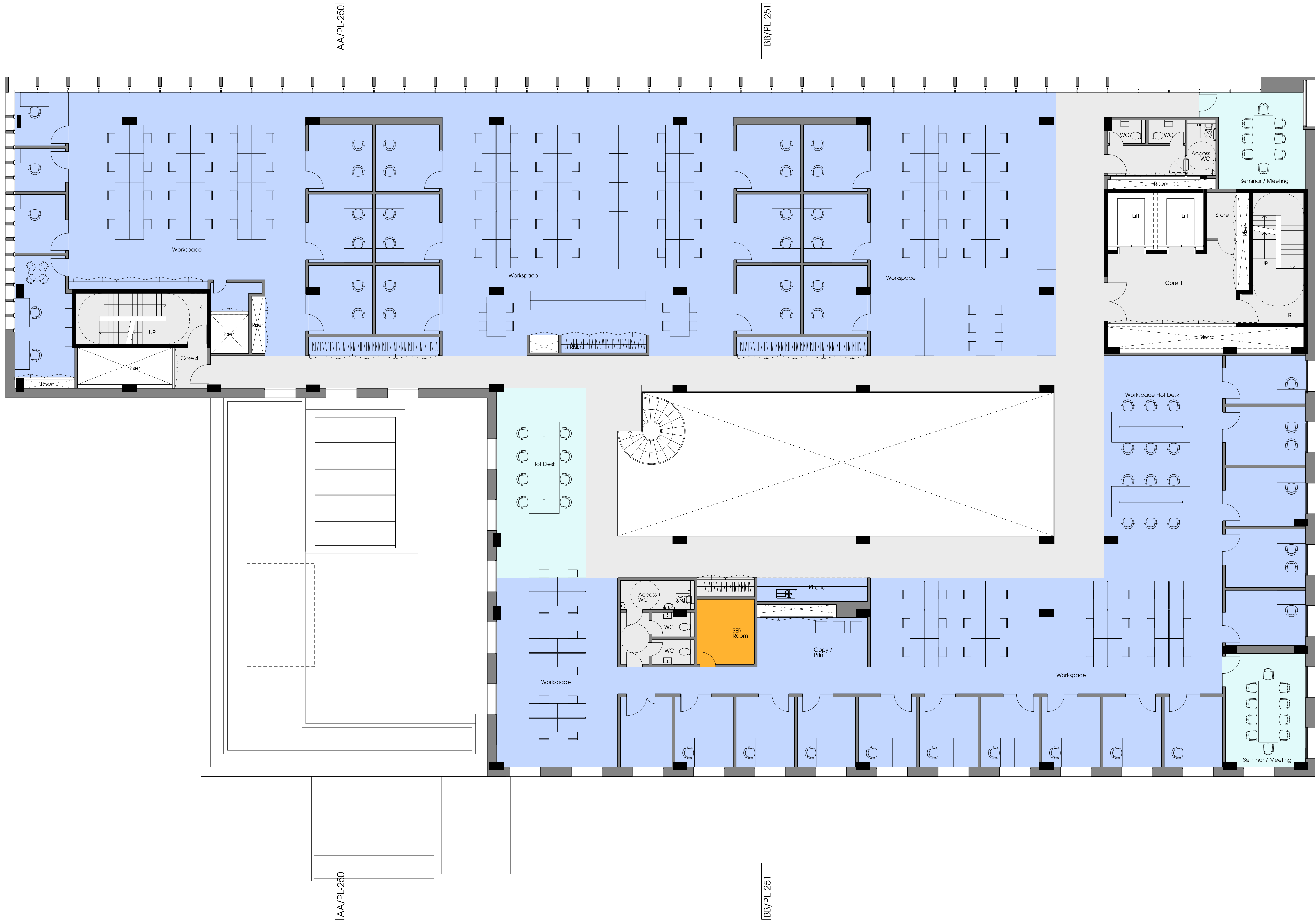
Project
Centre for Research into Rare Disease in Children
at Great Ormond Street Hospital

Drawing Title
Proposed
General Arrangement
Second Floor Plan

Date	Scale @ A1(A3)	Status
05.09.2014	1:100 (1:200)	Planning
Drawn	Checked	Approved
CA	KI	GH

Project No.	Drawing No.	Revision
464	PL-204	0

CC/PL_252



CC/PL_252

Notes

Contractor to check all dimensions on site. Do not scale from this drawing. Stanton Williams to be advised of any variation between the drawings and site conditions.

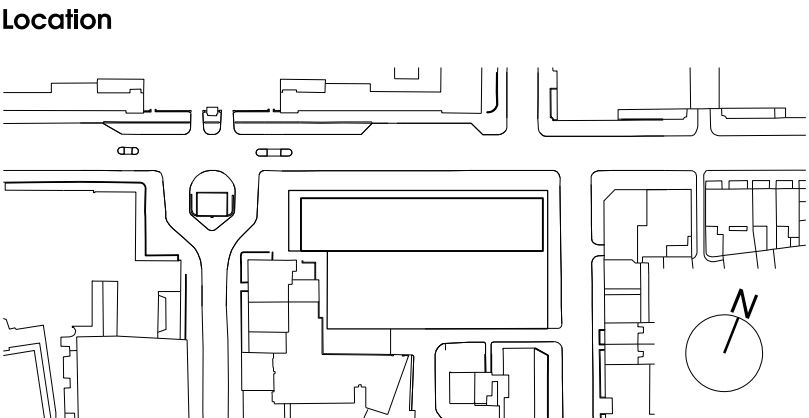
© Stanton Williams.
All rights described in Chapter IV of the Copyright, Designers and Patents Act 1998 have been asserted.

To be read in conjunction with the specification and all relevant drawings.

Key

- Entrance / Community Facilities
- Workspace
- Circulation
- Services

Revision	Date	Description
0	05.09.14	Issued for Planning



Stanton Williams
36 Graham Street
London N1 8GJ
Phone +44 (0)20 7880 6400
Email 464@stantonwilliams.com
www.stantonwilliams.com

STANTON
WILLIAMS

Project

Centre for Research into Rare Disease in Children
at Great Ormond Street Hospital

Drawing Title

Proposed
General Arrangement
Third Floor Plan

Date	Scale @ A1(A3)	Status
05.09.2014	1:100 (1:200)	Planning

Drawn	Checked	Approved
CA	KI	GH

Project No.	Drawing No.	Revision
464	PL-205	0



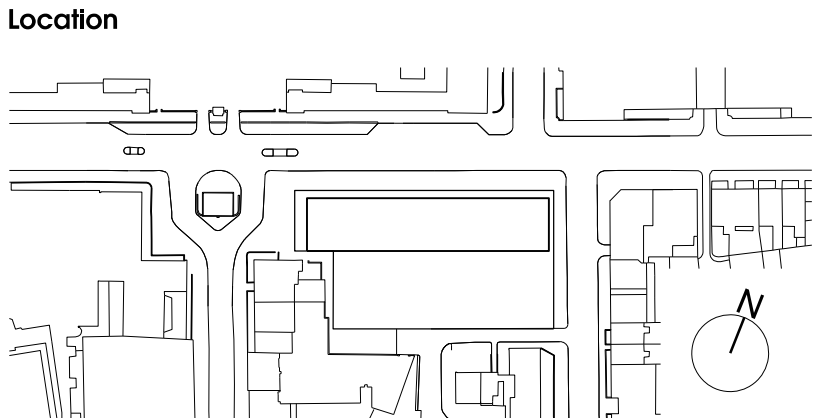
Notes
Contractor to check all dimensions on site. Do not scale from this drawing. Stanton Williams to be advised of any variation between the drawings and site conditions.

© Stanton Williams.
All rights described in Chapter IV of the Copyright, Designers and Patents Act 1998 have been asserted.

To be read in conjunction with the specification and all relevant drawings.

- Key**
- Equipment / Support Space
 - Laboratory
 - Workspace
 - Circulation
 - Services

Revision	Date	Description
0	05.09.14	Issued for Planning



Stanton Williams
36 Graham Street
London N1 8GJ
Phone +44 (0)20 7880 6400
Email 464@stantonwilliams.com
www.stantonwilliams.com

STANTON
WILLIAMS

Project
Centre for Research into Rare Disease in Children
at Great Ormond Street Hospital

Drawing Title
Proposed
General Arrangement
Fourth Floor Plan

Date	Scale @ A1(A3)	Status
05.09.2014	1:100 (1:200)	Planning
Drawn	Checked	Approved
CA	KI	GH

Project No.	Drawing No.	Revision
464	PL-206	0

AA/PL-250

BB/PL-251

CC/PL_252

CC/PL_252

AA/PL-250

BB/PL-251

Notes

Contractor to check all dimensions on site. Do not scale from this drawing. Stanton Williams to be advised of any variation between the drawings and site conditions.

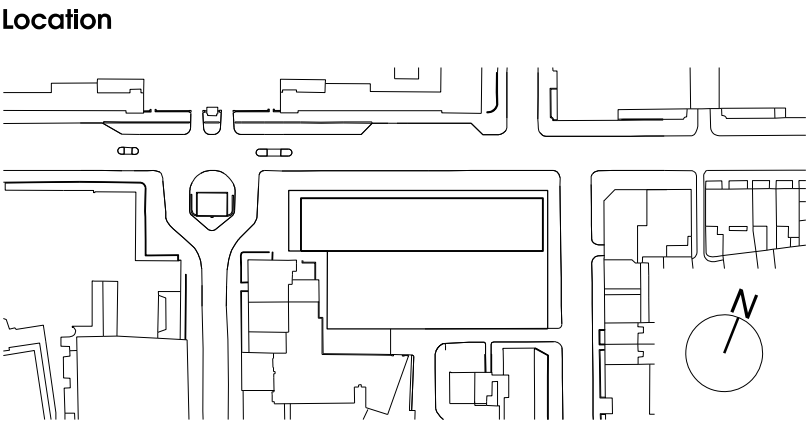
© Stanton Williams.
All rights described in Chapter IV of the Copyright, Designers and Patents Act 1998 have been asserted.

To be read in conjunction with the specification and all relevant drawings.

Key

- Plant
- Circulation

Revision	Date	Description
0	05.09.14	Issued for Planning



Stanton Williams
36 Graham Street
London N1 8GJ
Phone +44 (0)20 7880 6400
Email 464@stantonwilliams.com
www.stantonwilliams.com

STANTON
WILLIAMS

Project
Centre for Research into Rare Disease in Children
at Great Ormond Street Hospital

Drawing Title
Proposed
General Arrangement
Fifth Floor Plan

Date	Scale @ A1(A3)	Status	Project No.	Drawing No.	Revision
05.09.2014	1:100 (1:200)	Planning	464	PL-207	0
Drawn CA	Checked KI	Approved GH			

CC/PL_252

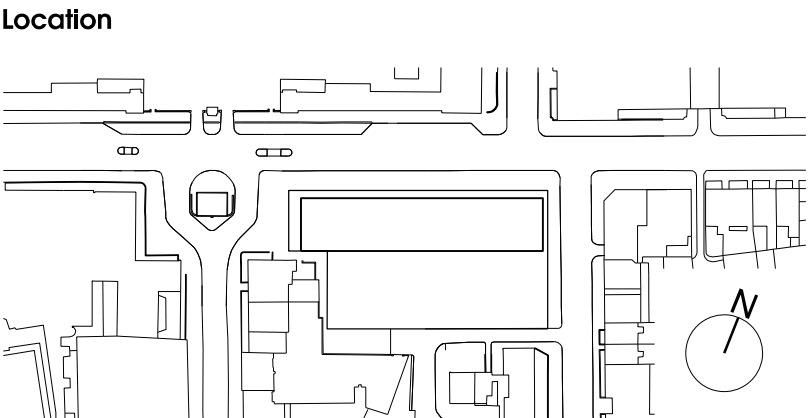
CC/PL_252

Notes
Contractor to check all dimensions on site. Do not scale from this drawing. Stanton Williams to be advised of any variation between the drawings and site conditions.

© Stanton Williams.
All rights described in Chapter IV of the Copyright, Designers and Patents Act 1998 have been asserted.

To be read in conjunction with the specification and all relevant drawings.

Revision	Date	Description
0	05.09.14	Issued for Planning



Stanton Williams
36 Graham Street
London N1 8GJ
Phone +44 (0)20 7880 6400
Email 464@stantonwilliams.com
www.stantonwilliams.com

STANTON
WILLIAMS

Project
Centre for Research into Rare Disease in Children
at Great Ormond Street Hospital

Drawing Title
Proposed
General Arrangement
Roof Plan

Date	Scale @ A1(A3)	Status	Project No.	Drawing No.	Revision
05.09.2014	1:100 (1:200)	Planning	464	PL-208	0
Drawn EM	Checked KI	Approved GH			

