

[illegible]

PROJECT CODE: <b>7CGT</b>	PROJECT TITLE: <b>Flat 4 7 Cambridge Gate</b>
------------------------------	--

DRAWING TITLE: <b>Third Floor General Arrangement Plan</b>		DRAWN BY: <b>BW</b>		CHECKED BY: <b>BW</b>	
SCALE: <b>1:100 @ A3</b>		DESIGNED BY: <b>PLANNING</b>		DATE: <b>13/08/2014</b>	
DRAWING NO.: <b>PL301</b>				REVISION: <b>-</b>	



[illegible]

PROJECT CODE: <b>7CGT</b>	PROJECT TITLE: <b>7 Cambridge Gate</b>
------------------------------	---

DRAWING TITLE: <b>Fourth Floor General Arrangement Plan</b>		DRAWN BY: <b>BW</b>		CHECKED BY: <b>BW</b>	
DESIGNED FOR: <b>PLANNING</b>		SCALE: <b>1:100 @ A3</b>		DATE: <b>13/08/2014</b>	
DRAWING NO.: <b>PL401</b>		REVISION: <b>-</b>			



[illegible]

PRODUCT CODE: <b>7CGT</b>	PROJECT TITLE: <b>7 Cambridge Gate</b>
------------------------------	---

DRAWING TITLE: <b>Fifth Floor          General Arrangement Plan</b>	
DRAWING BY: <b>BW</b>	CHECKED BY: <b>BW</b>
ISSUED FOR: <b>P/PLANNING</b>	
SCALE: <b>1:100 @ A3</b>	DATE: <b>13/08/2014</b>
DRAWING NO: <b>PL501</b>	REVISIONS: -









[illegible]

**NOTES:**



Carpet

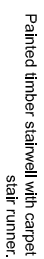
Stone

Timber

Timber Parquet

--	--	--	--

Anti-static Vinyl



4th Floor Finishes Plan  
1 : 100



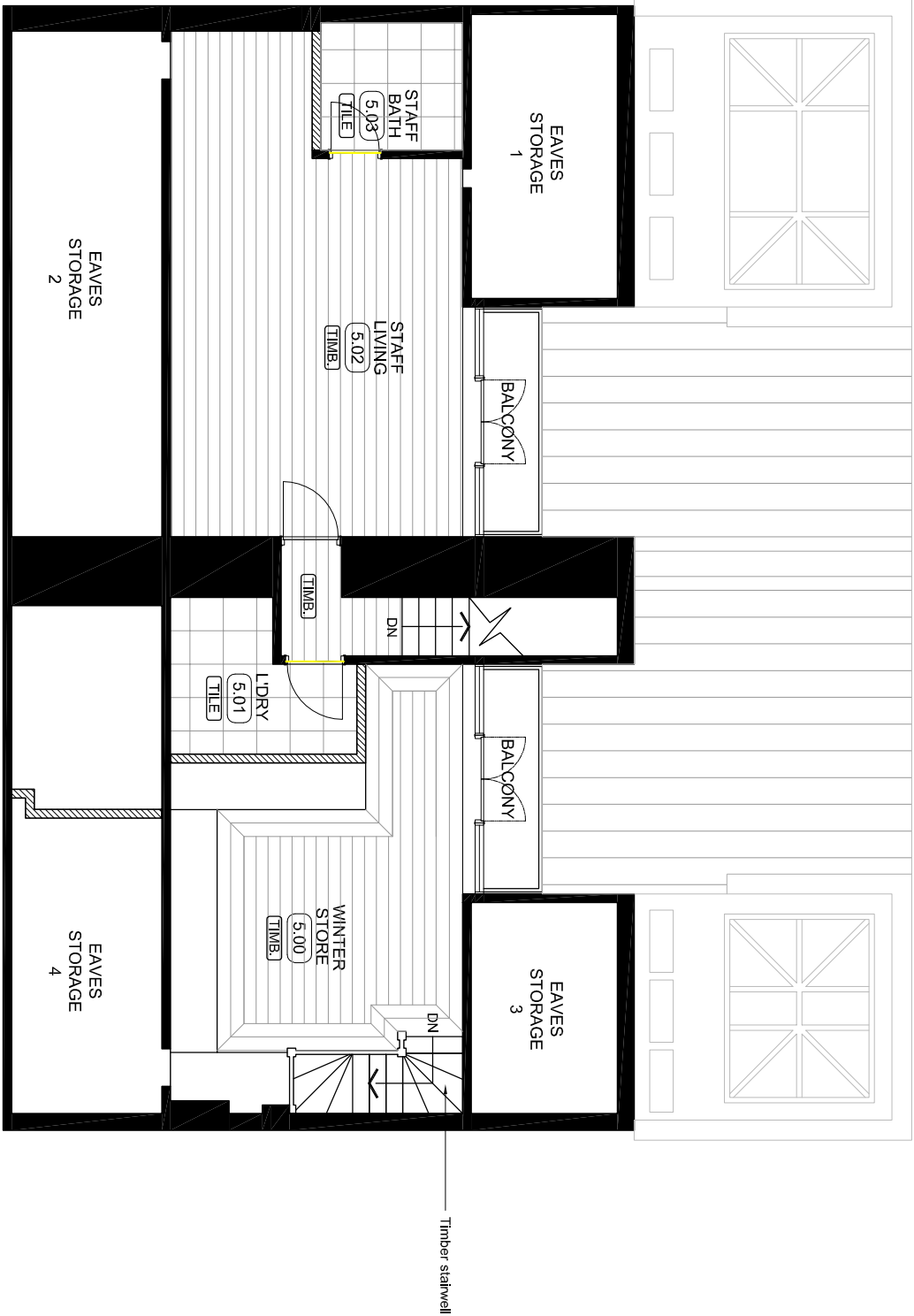


METAL FLOOR THRESHOLDS

- TH-01  
Stone/Timber
- TH-02  
Timber/Carpet
- TH-03  
Carpet/Stone, Tile
- TH-04  
Timber/Vinyl

FLOORING

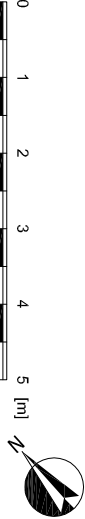
- Carpet
- Stone
- Timber
- Timber Parquet
- Tile
- Anti-static Vinyl



Timber stairwell

5th Floor Finishes Plan

1 : 100







Candy and Candy Ltd  
Rutland House  
Rutland Gardens  
London SW7 1BX  
Tel: +44 (0)20 7590 1900  
Fax: +44 (0)20 7590 1901  
Web: [www.candyandcandy.com](http://www.candyandcandy.com)  
E-mail: [info@candyandcandy.com](mailto:info@candyandcandy.com)

**DISCLAIMER**

**Manifestation (DAP) and the** *Manifestation of Personality* have been presented as good faith and are not intended to constitute part of or alter or contravene or create any representation or warranty of any kind provided by Carney and Carney or its agents, whether written or verbal. ("Promotional") It may be noted upon a statement of representation, warranty or offer, that, neither Carney nor its agents intend to make any representation or warranty and, without limitation, Carney and Carney's agents do not intend to make any representation or warranty. Any claim, promise, indication and/or statement is intended to represent the complete characteristics of a scheme, any appearance only. Any product and/or materials shown or indicated are indicative only and may not be used to represent any particular appearance or to claim that these drawings, any reference to them or any other representation is intended to constitute a representation or offer concerning the building, regulations or other content, has been made by Carney and Carney or its agents, whether written or verbal. Any representation or statement is intended by Carney and Carney.

NOTES

NOTES

[illegible]

PROJECT TITLE:  
7 Cambridge Gate

113

DRAWING TITLE:  
**Third Floor**  
**Reflected Ceiling Plan**

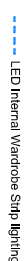
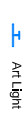
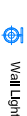
DRAWN BY: <b>BV</b>	CHECKED BY: <b>BV</b>
------------------------	--------------------------

ISSUED FOR:  
**PLANNING**

SCALE: 1:100 @ A3  
DATE: 13/08/2014

PL341

Recessed Down Light



The floor plan for the 3rd floor includes the following rooms and areas:

- KITCHEN (3.07)**: Located at the top right, featuring a sink, stove, and refrigerator.
- FORMAL DINING (3.06)**: Adjacent to the kitchen, containing a large table and chairs.
- ENTRANCE HALL (3.00)**: A central area with a lift and a coat closet.
- COATS LOBBY (3.04)**: A small area near the entrance hall.
- POWDER ROOM (3.05)**: A small bathroom near the coats lobby.
- PLANT ROOM**: A room containing a large plant.
- FORMAL LIBRARY (3.01)**: A large room with bookshelves and a table.
- FORMAL RECEPTION (3.02)**: A room with a large table and chairs.
- INFORMAL LOUNGE (3.03)**: A room with a large table and chairs.

The plan also shows various architectural details such as doors, windows, and furniture placement.

3rd Floor Reflected Ceiling Plan

341

$$\frac{1}{100}$$










### New Ceiling Rose



**NOTE**

PROJECT CODE: <b>7CGT</b>	PROJECT TITLE: <b>7 Cambridge Gate</b>
------------------------------	---

DRAWN BY: BV	CHECKED BY: BV
-----------------	-------------------

ISSUED FOR: <b>PLANNING</b>	SCALE: 1:100 @ A3	DATE: 13/08/2014
DRAWING NO: <b>PL541</b>	REVISION: -	

### 5th Floor Reflected Ceiling Plan

1:10C

