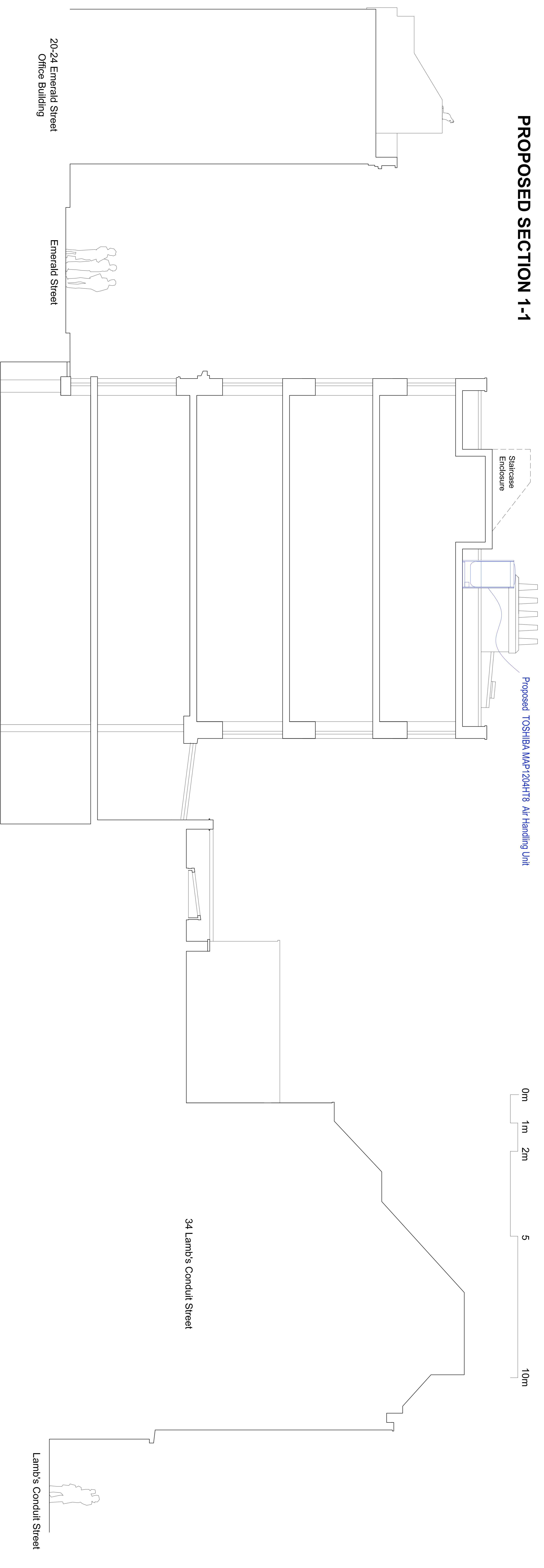
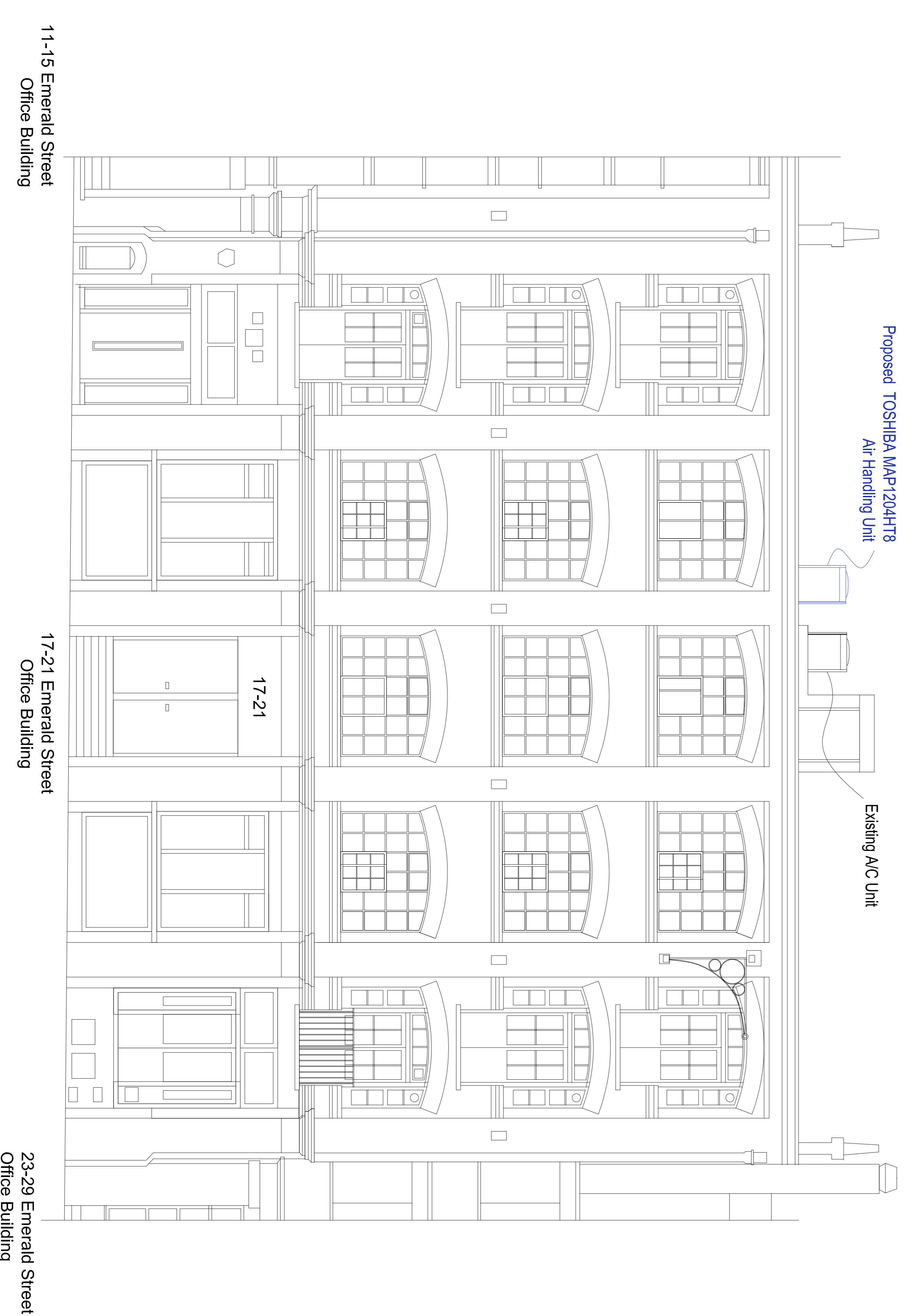


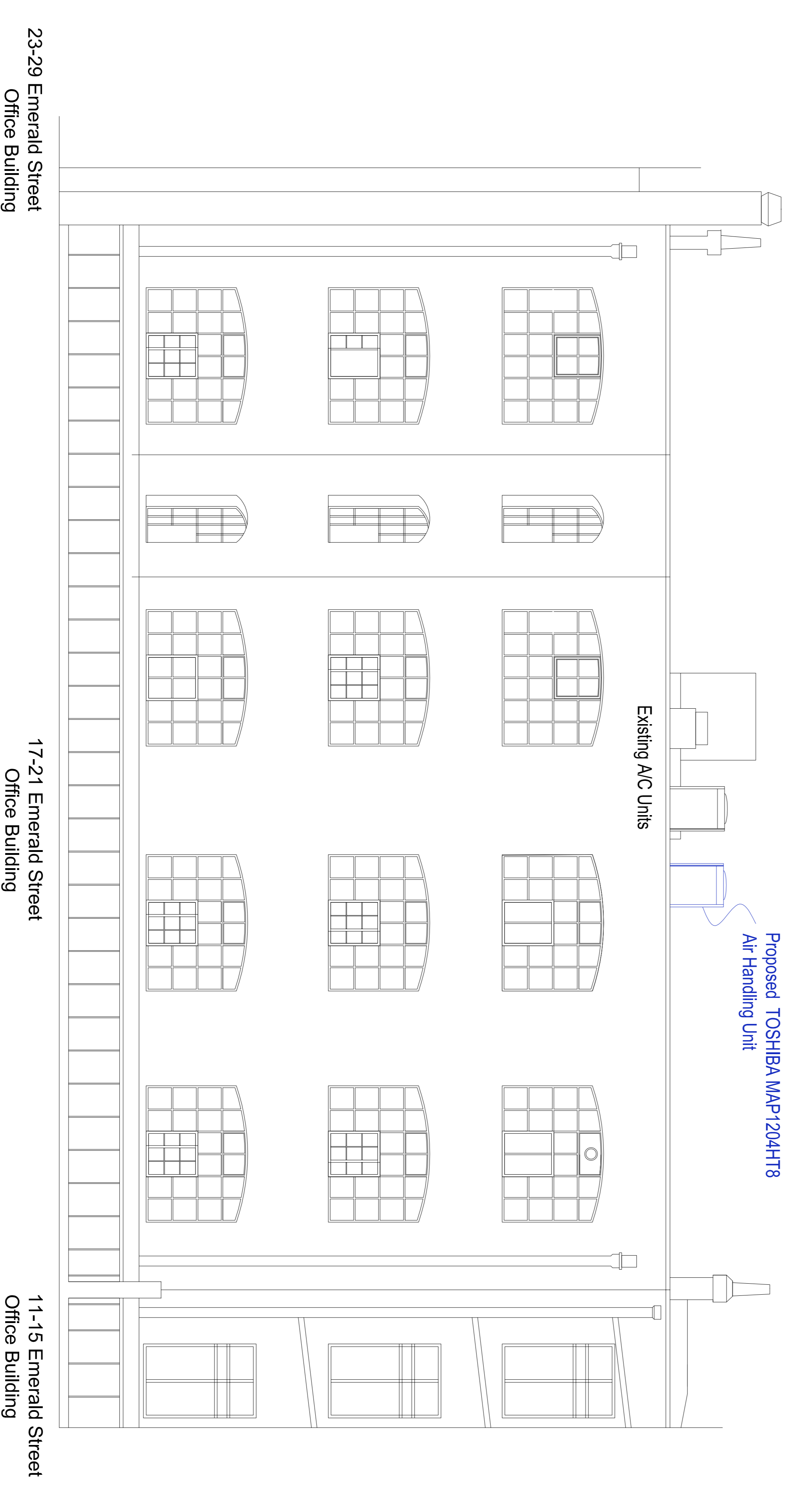
**PROPOSED SECTION 1-1**



**PROPOSED FRONT ELEVATION**



**PROPOSED REAR ELEVATION**



11-15 Emerald Street  
Office Building

17-21 Emerald Street  
Office Building

23-29 Emerald Street  
Office Building

23-29 Emerald Street  
Office Building

17-21 Emerald Street  
Office Building

11-15 Emerald Street  
Office Building



ASAP Ltd, 24 Ludlow Street, London E14 4JW, 0203 8120 8120, info@asap-ltd.com

**PROPOSED SECTION AND ELEVATIONS**  
17-21 Emerald Street, London WC1N 3QN

Drawing No: 130310-P-3 Scale 1:50@A0 17 Sep 2014