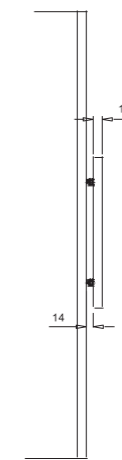


Individual text externally illuminated

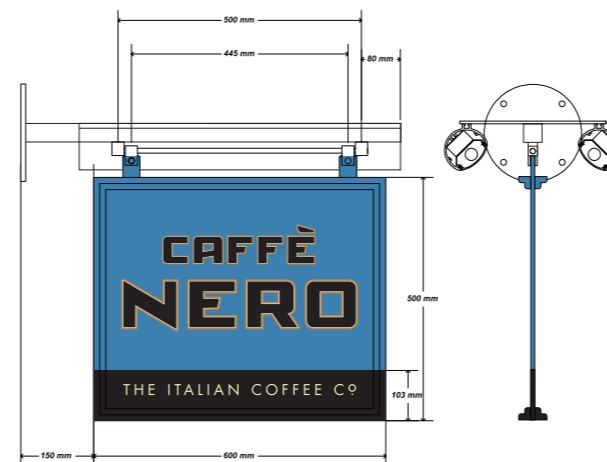
caffè nero logo to be flat cut from 15mm thk trovidur fitted with brass locators on rear, all fitted to existing timber painted fascia. Text and logos finished copper with applied black and white vinyl detail.

Portland light troughs to span text



Individual text non illuminated

caffè nero and bean logos to be flat cut from 15mm thk trovidur fitted with brass locators on rear, all fitted to existing timber painted fascia. Text and logos finished copper with applied black and white vinyl detail.



Externally illuminated projector

wooden panel, coated light blue BS4800 20E51. Strap line to be in black. fitted with timber beading frame.

Fabricated mild steel wall bracket, to include 2no portland trough lights, with machined swing sign blocks and fixing rod.

2.5mm flat cut aluminium text coated copper, with face applied black and white vinyl detail. 'THE ITALIAN COFFEE CO' in face applied cream vinyl.

Projection brackets and trough lights to be coated eggshell black.

Not to scale

This drawing is copyright and must not be reproduced.

Please note colour and scale of actual signs may slightly differ from computer visual.

one 2 one
Sign Solutions Ltd

Client : Caffe Nero, Finchley

Contact : Shane Coley

Drawing No. : 250914-01

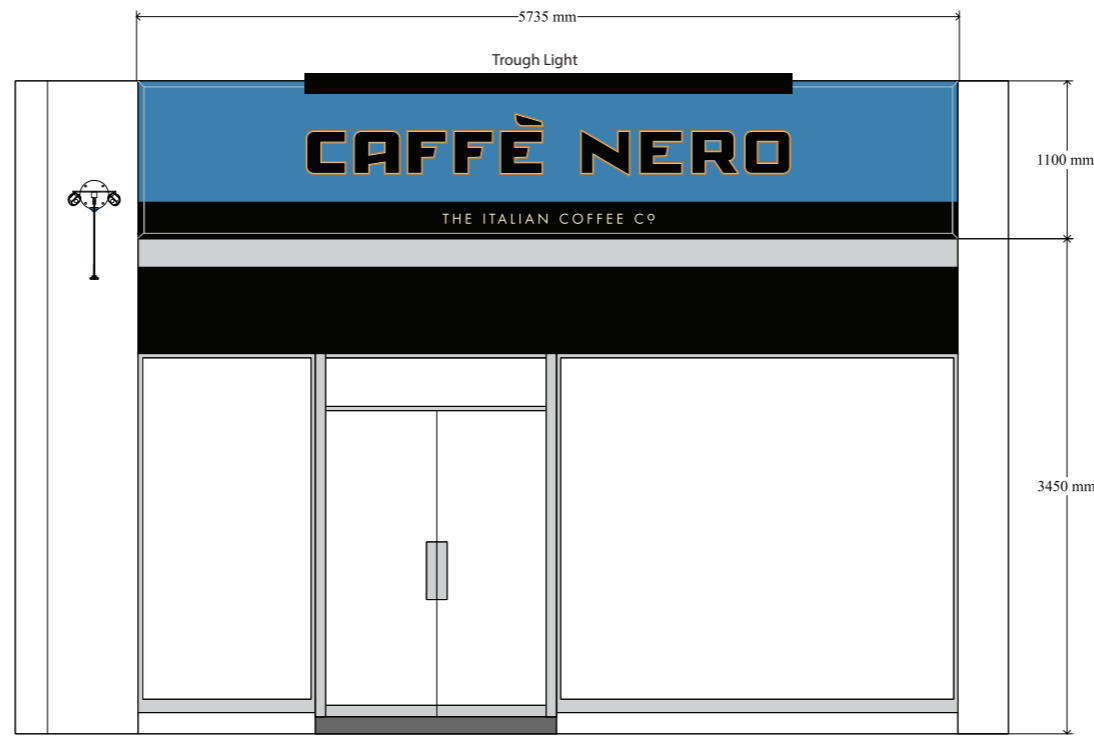
Date : 25-09-14 Rev :

Font List :

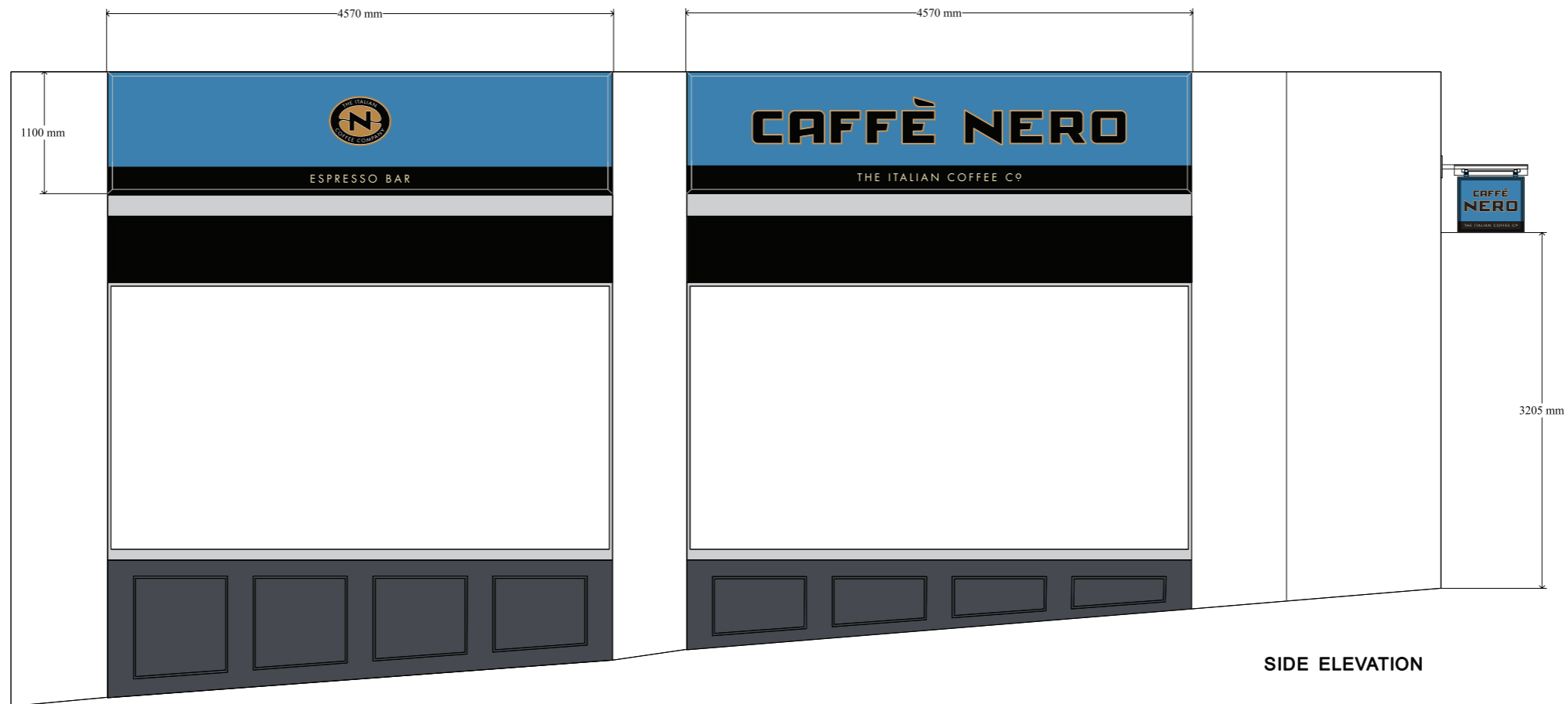
N/A

Paint / Vinyl Refs :

N/A



FRONT ELEVATION



SIDE ELEVATION

1/60th scale @A3

**This drawing is copyright
and must not be reproduced.**

Please note colour and scale of actual
signs may slightly differ from computer visual.

one 2 one
Sign Solutions Ltd

Client : Caffè Nero, Finchley

Contact : Shane Coley

Drawing No. : 250914-01

Date : 25-09-14 Rev :

Font List :

N/A

Paint / Vinyl Refs :

N/A