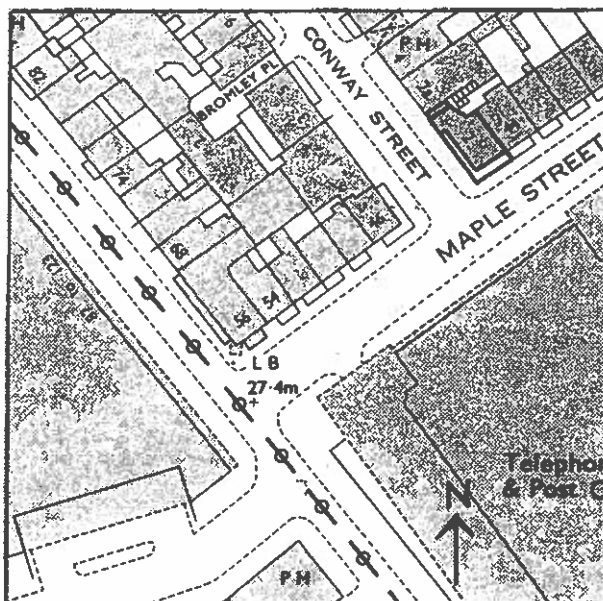
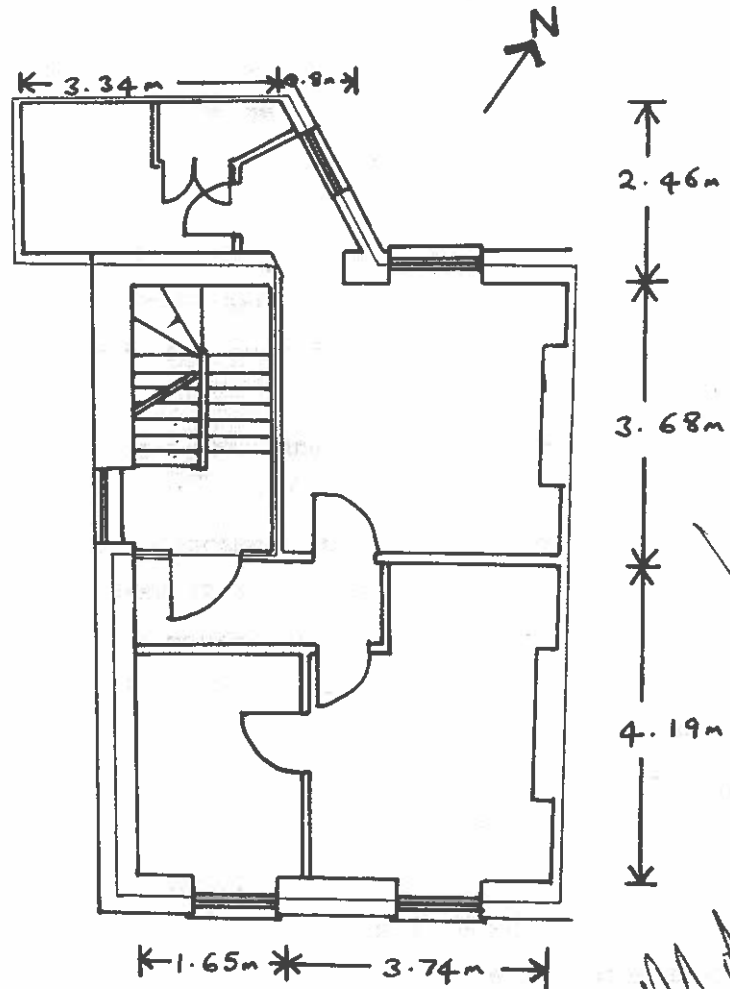


2B CONWAY STREET, W.I. FIRST FLOOR FLAT



Not to scale.

The ordnance survey extract defines the curtilage of no. 2 CONWAY STREET outlined in heavy black; the extent of the demised flat to be ascertained from the large plan(s).

The large plan identifies by red outline at floor level, the demised premises.

REF: 050717062