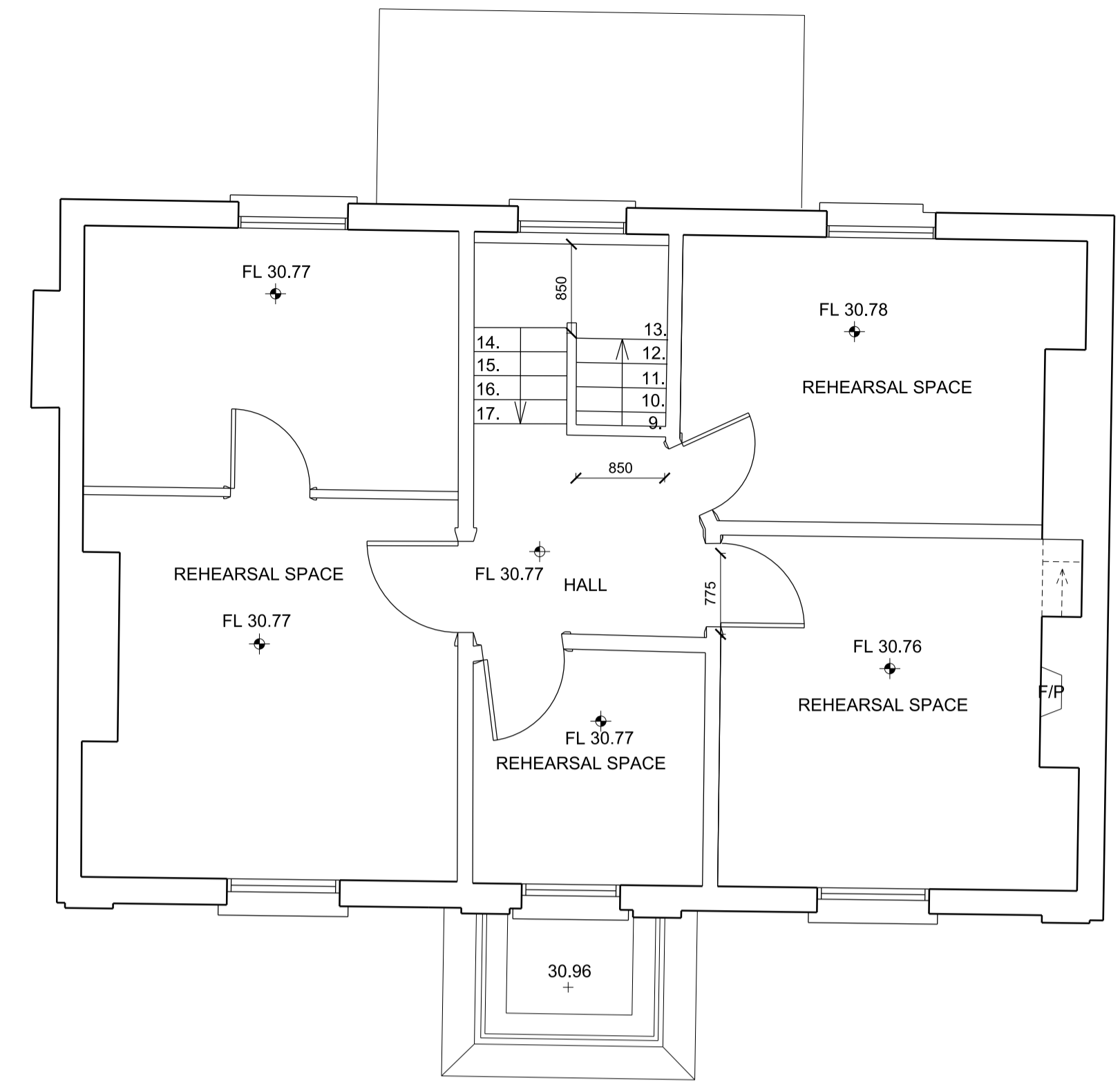
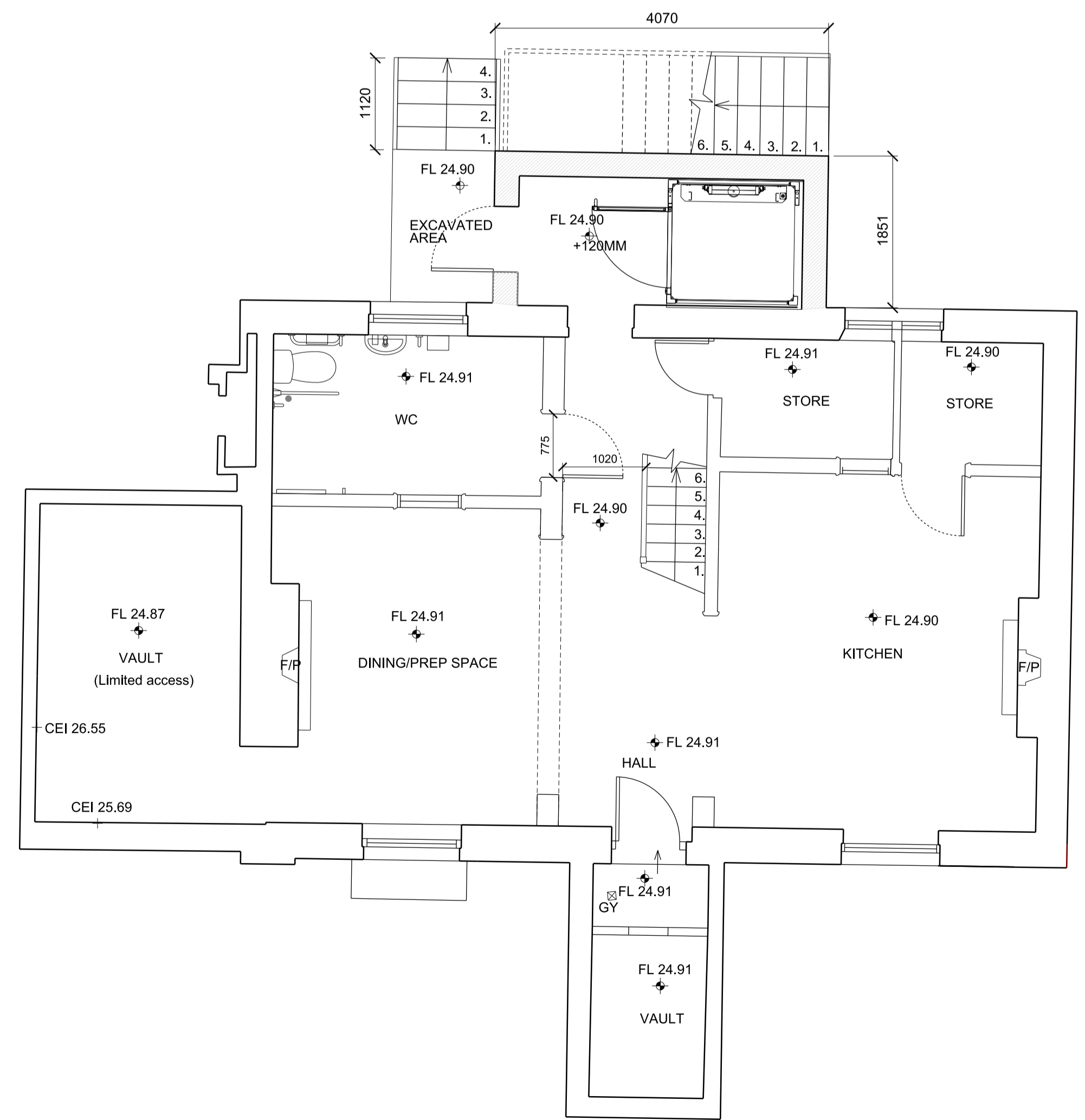


01 UPPER GROUND FLOOR PLAN: GENERAL ARRANGEMENT



02 FIRST FLOOR PLAN: GENERAL ARRANGEMENT



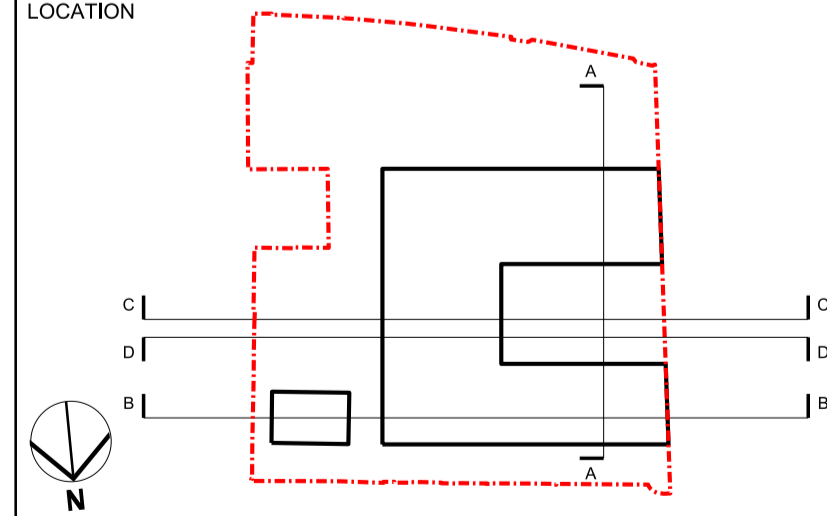
03 LOWER GROUND FLOOR PLAN: GENERAL ARRANGEMENT

PROPOSED AREA OF NEW CONSTRUCTION.

POO	28/03/14	Planning Application and Listed Building Consent
-----	----------	--

REV	DATE
-----	------

- NOTE
- Do not scale from this drawing, other than for Planning purposes.
 - All dimensions to be checked on site by the contractor and such dimensions to be his responsibility.
 - Report all drawing errors, omissions and discrepancies to the architect.
 - This document may be issued in an uncontrolled CAD format to enable others to use it as background information to make alterations and/or additions. In that instance the file will be accompanied by a PDF version. It is for those making such alterations and additions to ensure that they make use of current background information. AHMM Ltd accepts no liability for any such alterations or additions to the background information or arising out of changes to background information which occur prior to alterations of additions being made.



ALLFORD HALL MONAGHAN MORRIS
 ARCHITECTS Ltd
 2ND FLOOR, BLOCK C, 5-23 OLD STREET LONDON EC1V 9HL
 TEL 020 7251 5261 FAX 020 7251 5123 WEB WWW.AHMM.CO.UK

job title
HAWLEY PRIMARY SCHOOL

drawing title / location
**1 HAWLEY ROAD - GENERAL ARRANGEMENT
 PROPOSED PLANS**

drawn by	checked	scale	status
MP	DM	1:50@A1; 1:100@A3	PLANNING

project	zone	source	classification	drawing no.	revision
12160	x	P	[PA]	111	POO